

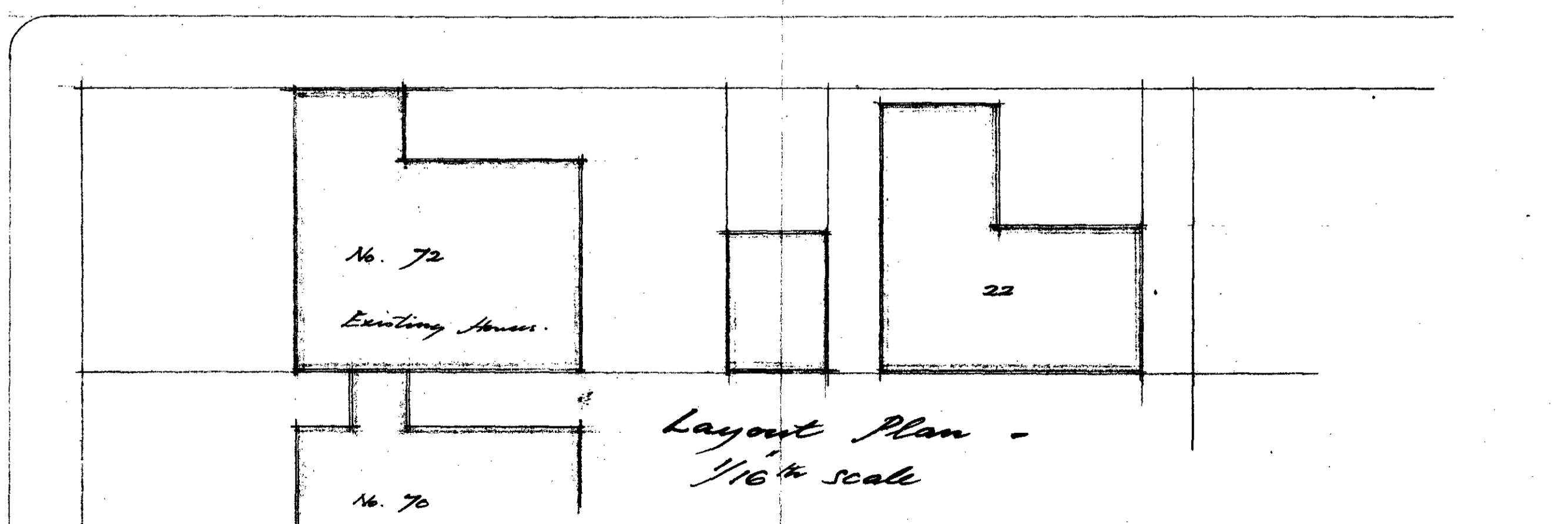
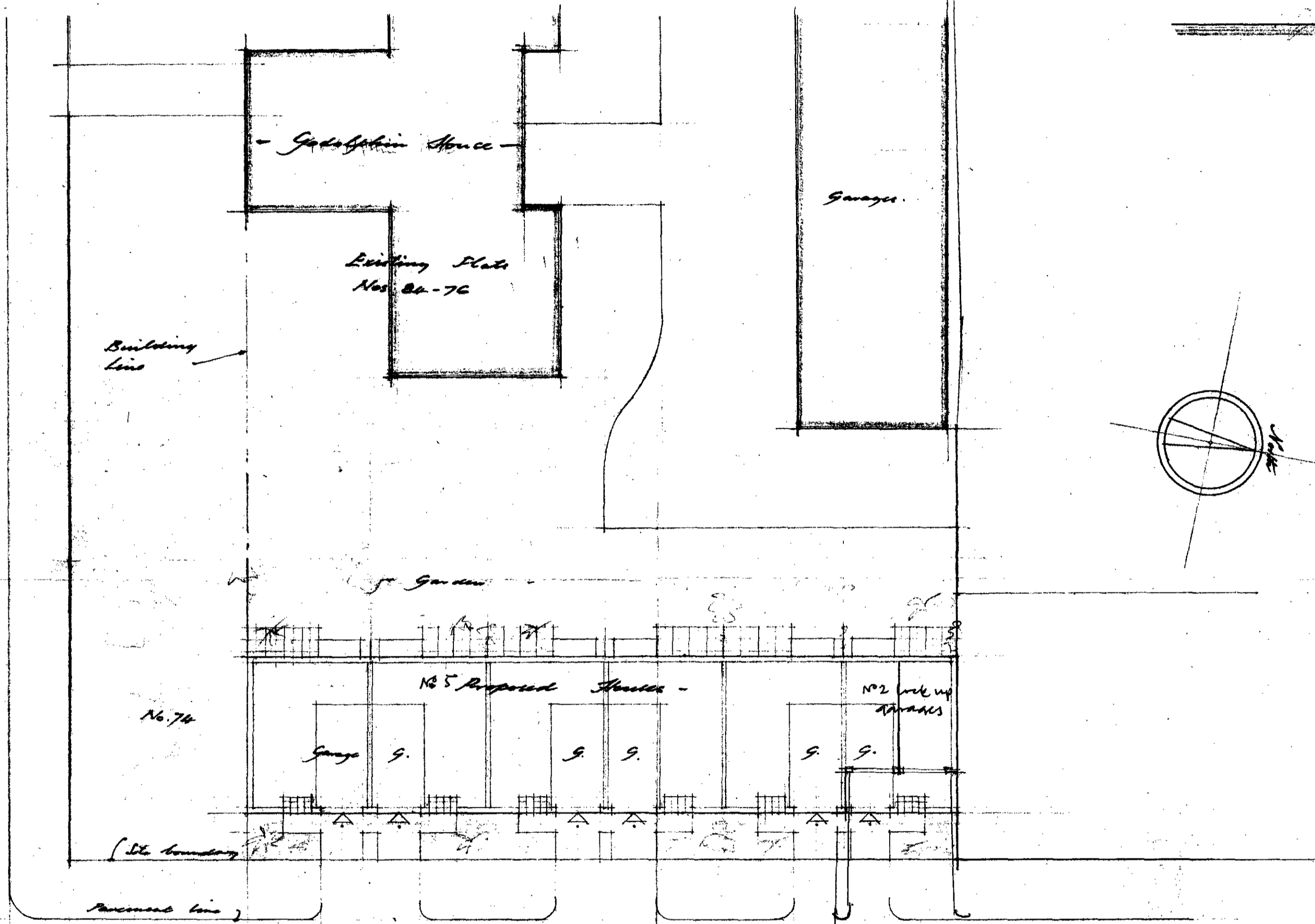
No. 87

No. 85

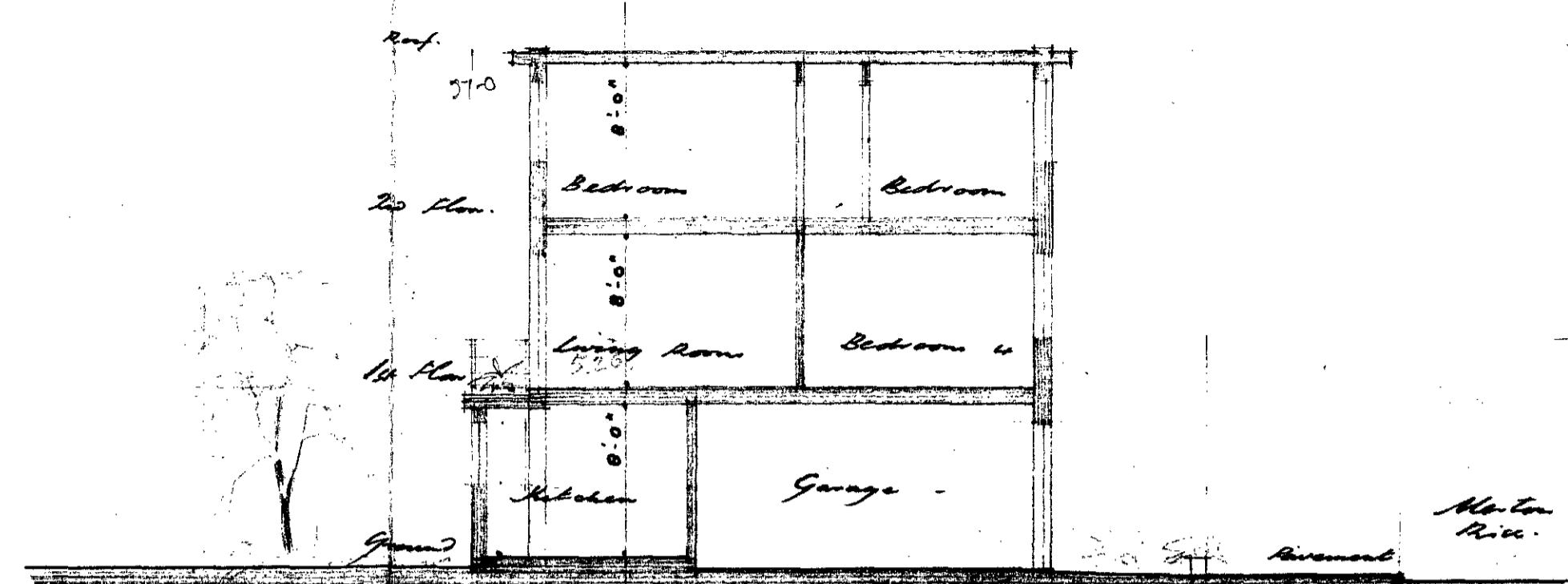
No. 83

No. 81

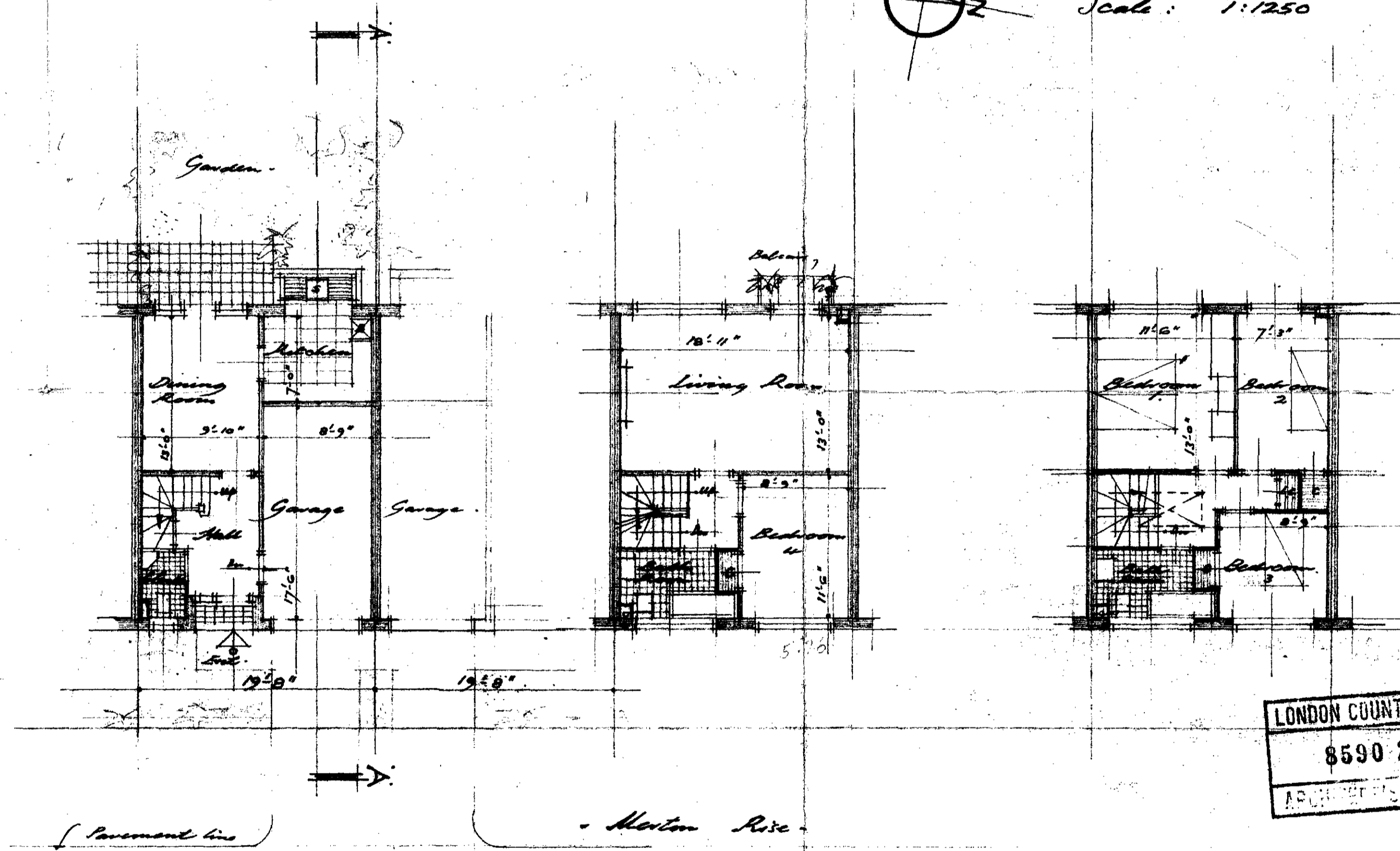
Fellows Road



Layout Plan - 1/16" scale



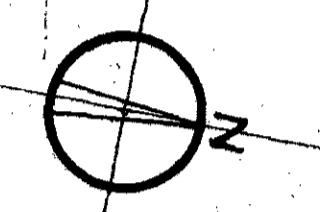
Section 'A-A'



Ground Floor Plan

First Floor Plan

Second Floor Plan



Block Plan - Scale: 1:1250

LONDON COUNTY COUNCIL  
8590 263-64  
ARCHITECTS' DEPARTMENT

Amendment in red  
Made by A van Nuffelen  
Stone Jones and Partners  
21/11/64

Proposed Redevelopment No. 74 Fellows Road Hampstead N.W. 3.

Plans and Section

Drawing No. 872/1  
Scales: 1/8", 1/16" & 1:1250  
Date: March 1964

Stone Jones and Partners  
Chartered Architects  
11-15 Farm Street  
London W.1.