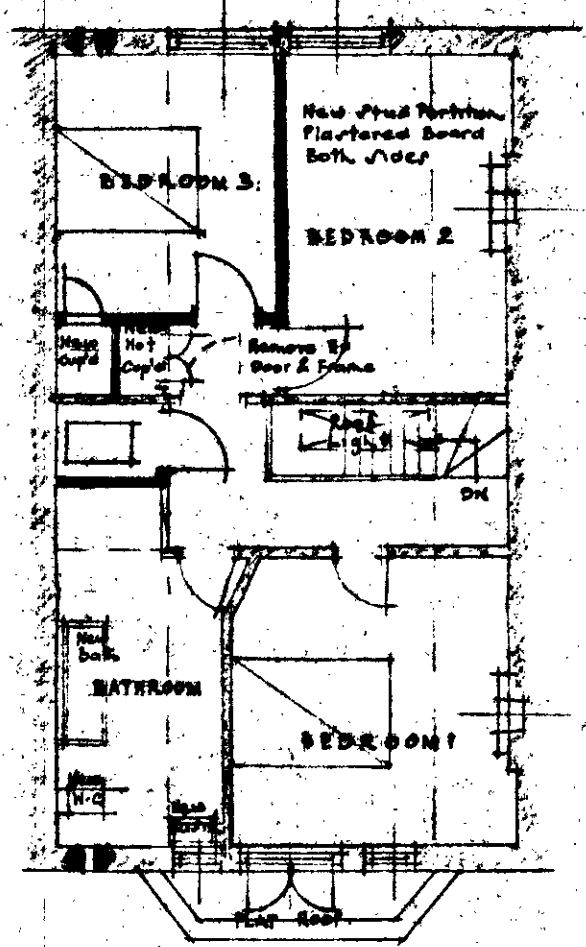
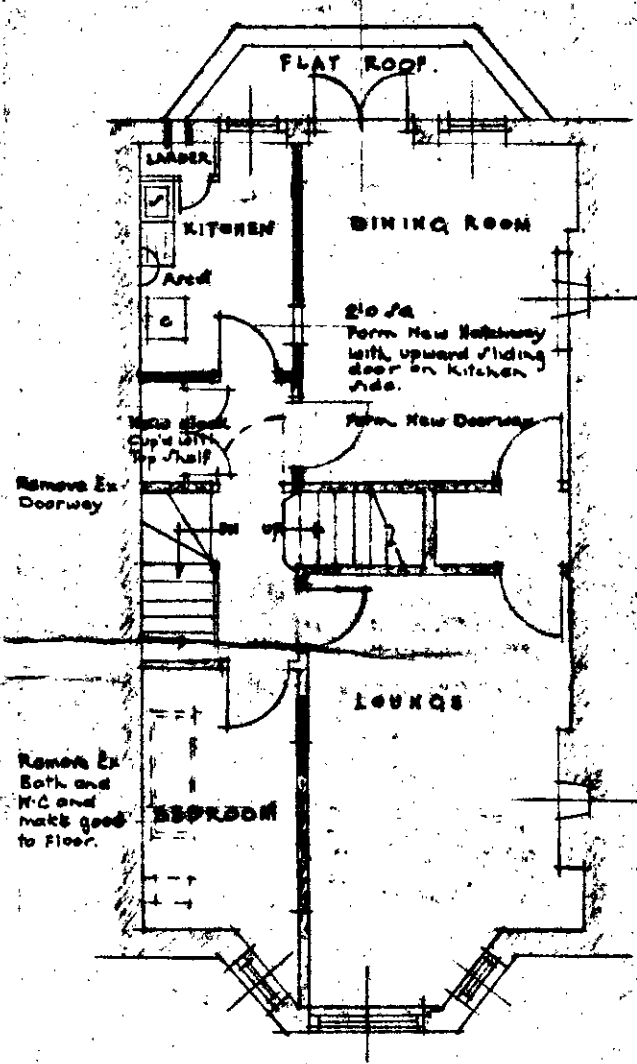
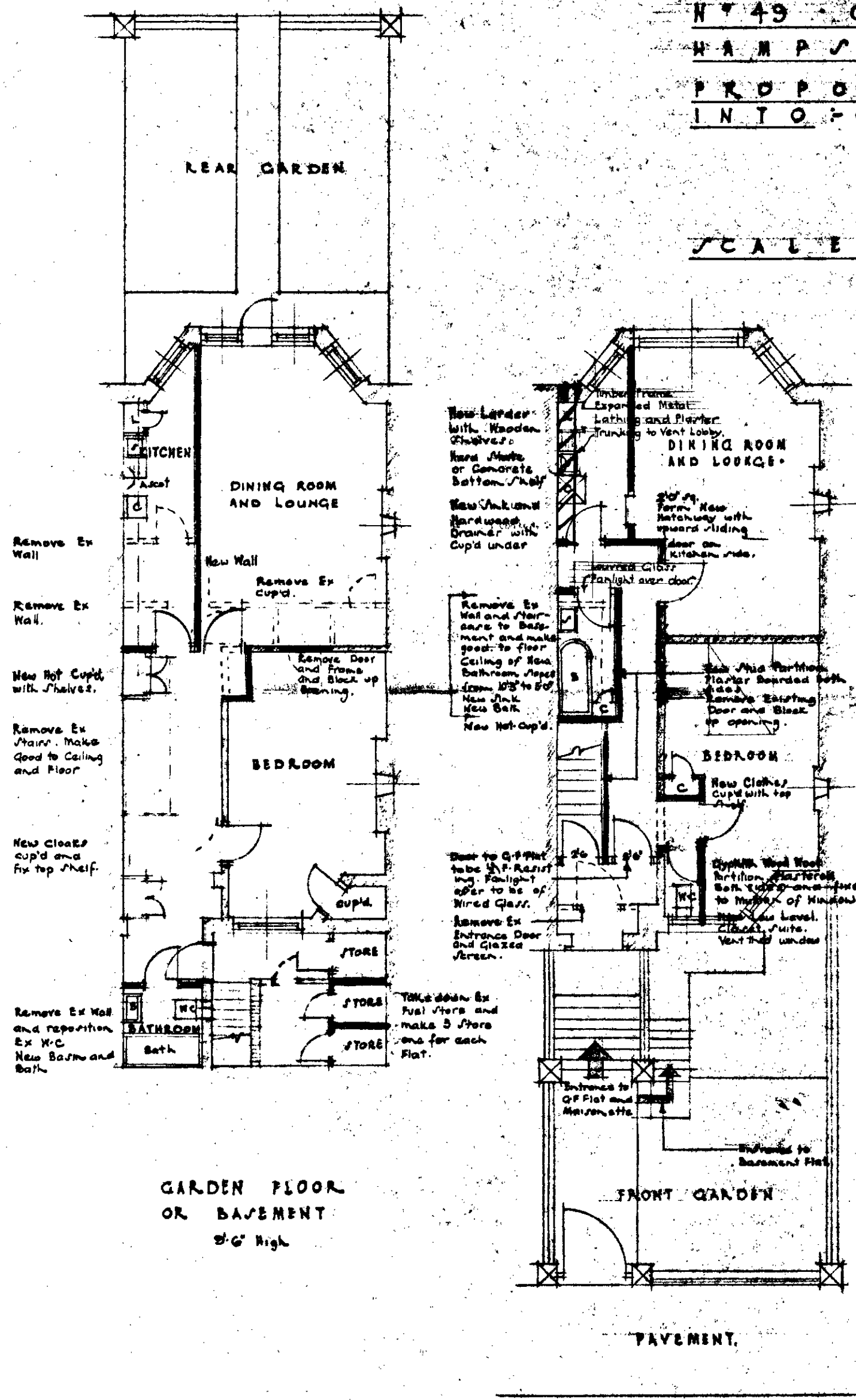


Right of Way

NO 49 CANFIELD GARDENS  
HAMPSTEAD N.W.6

PROPOSED CONVERSION  
INTO:- BASEMENT FLAT  
GROUND FLOOR FLAT  
FIRST & SECOND  
FLOOR MAISONNETTE.

SCALE:- ONE INCH EQUALS EIGHT FEET.



ARCHITECT L.O.O.  
No. 12163  
5 OCT 1966  
REF: TO

NICHOLSON AND ROYNTON  
2 NEW SQUARE LINCOLN INN  
16th AUGUST 1966