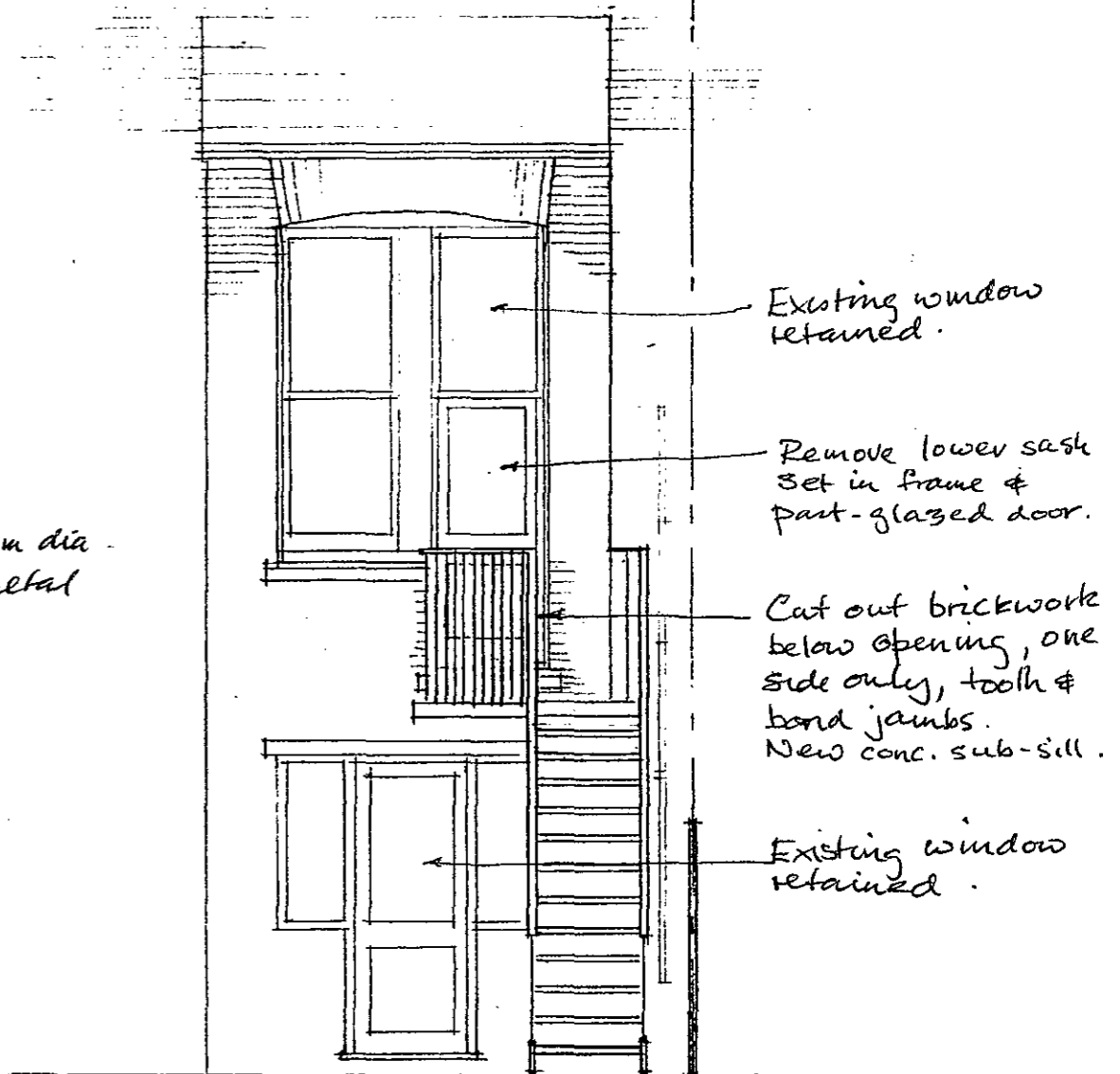
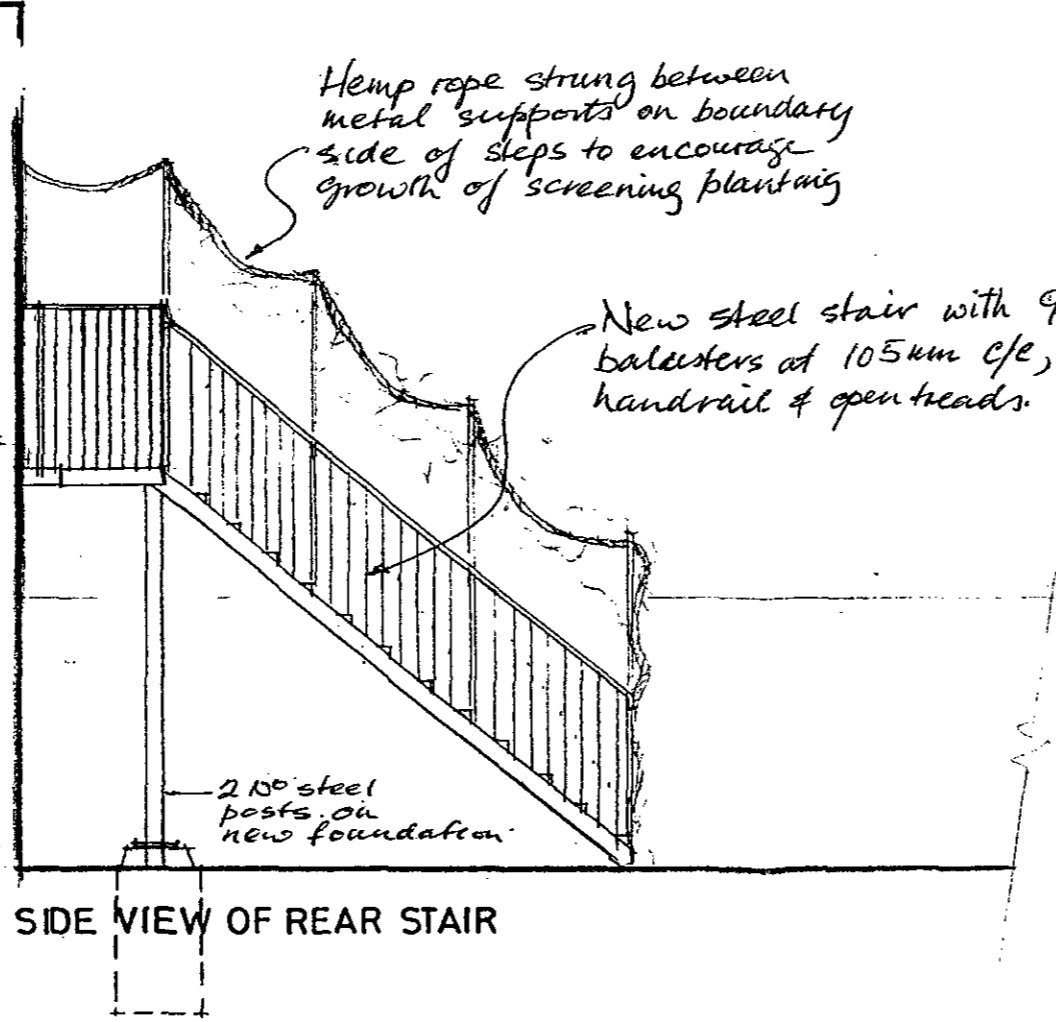


9501835

LONDON BOROUGH OF CAMDEN
TOWN AND COUNTRY PLANNING ACTS
26 JAN 1996
PLANS APPROVED
ON BEHALF OF THE COUNCIL



PROPOSED ACCESS STAIR
AT REAR OF
30 GOLDHURST TERRACE
LONDON NW6

SCALE 1:50 OCT 1995

WILSON PHYLAKTIS
ARCHITECTS
139-124 GRAFTON ROAD, LONDON NW6 4BA
TEL: 071-482 0400 FAX: 071-284 0539