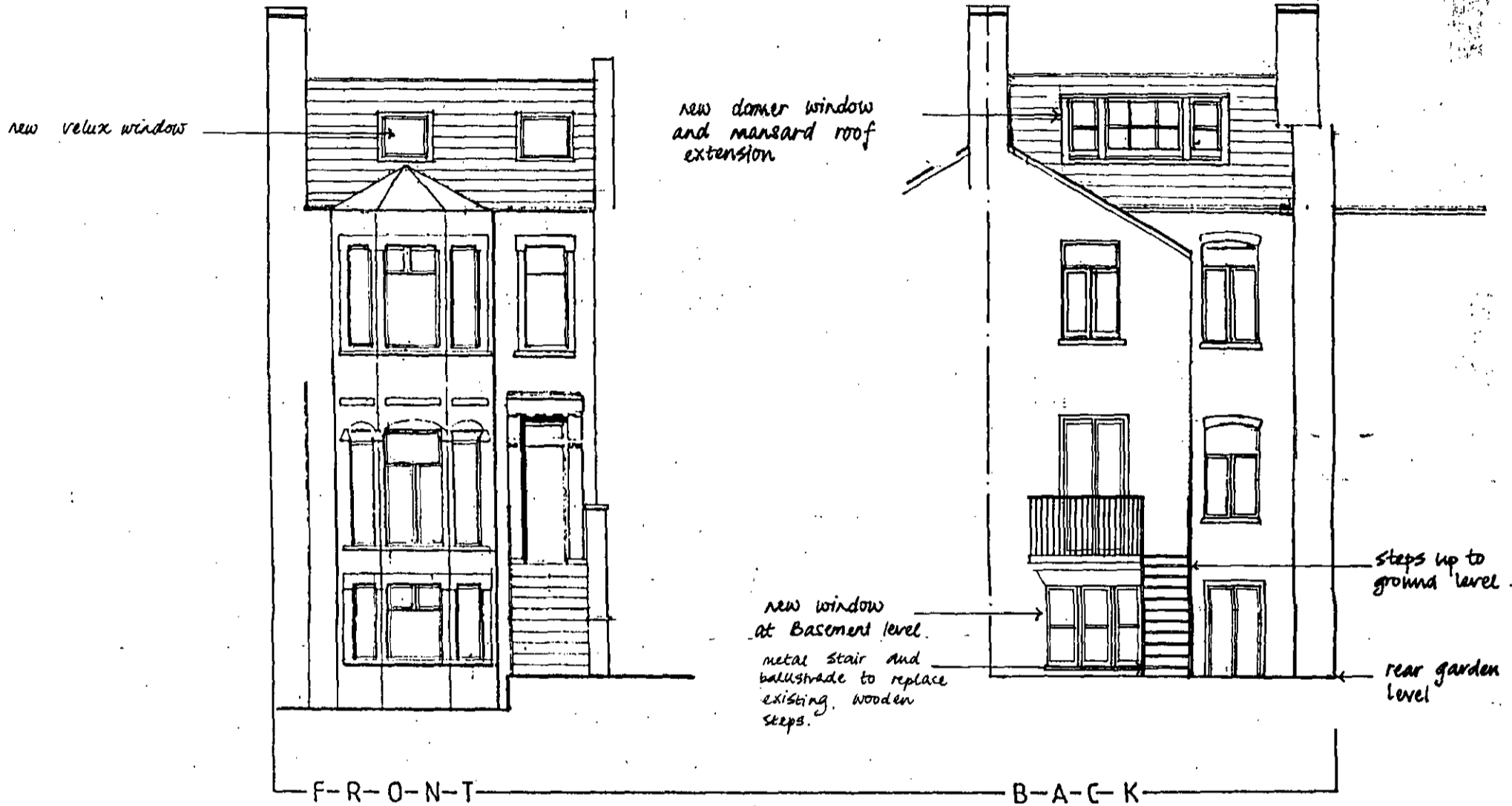


T/8905240/KR



LONDON BOROUGH OF CAMDEN
 TOWN AND COUNTRY PLANNING ACTS
 15 FEB 1990
 PLANS APPROVED
 ON BEHALF OF THE COUNCIL

Rev B 3/1/90 Front dormer window changed to velux window.
 Rev A 20/11/89 Heights of roof lowered. Front elevation Dormer window changed.

Note: This drawing is based upon drawing No. 112:02 produced by P. MacNamara Architect.

PETER TIGG PARTNERSHIP
 ARCHITECTS-DESIGNERS
 WALMER COURTYARD
 226 WALMER ROAD
 HOLLAND PARK
 LONDON W11 4BY
 TEL: 01-221 8509

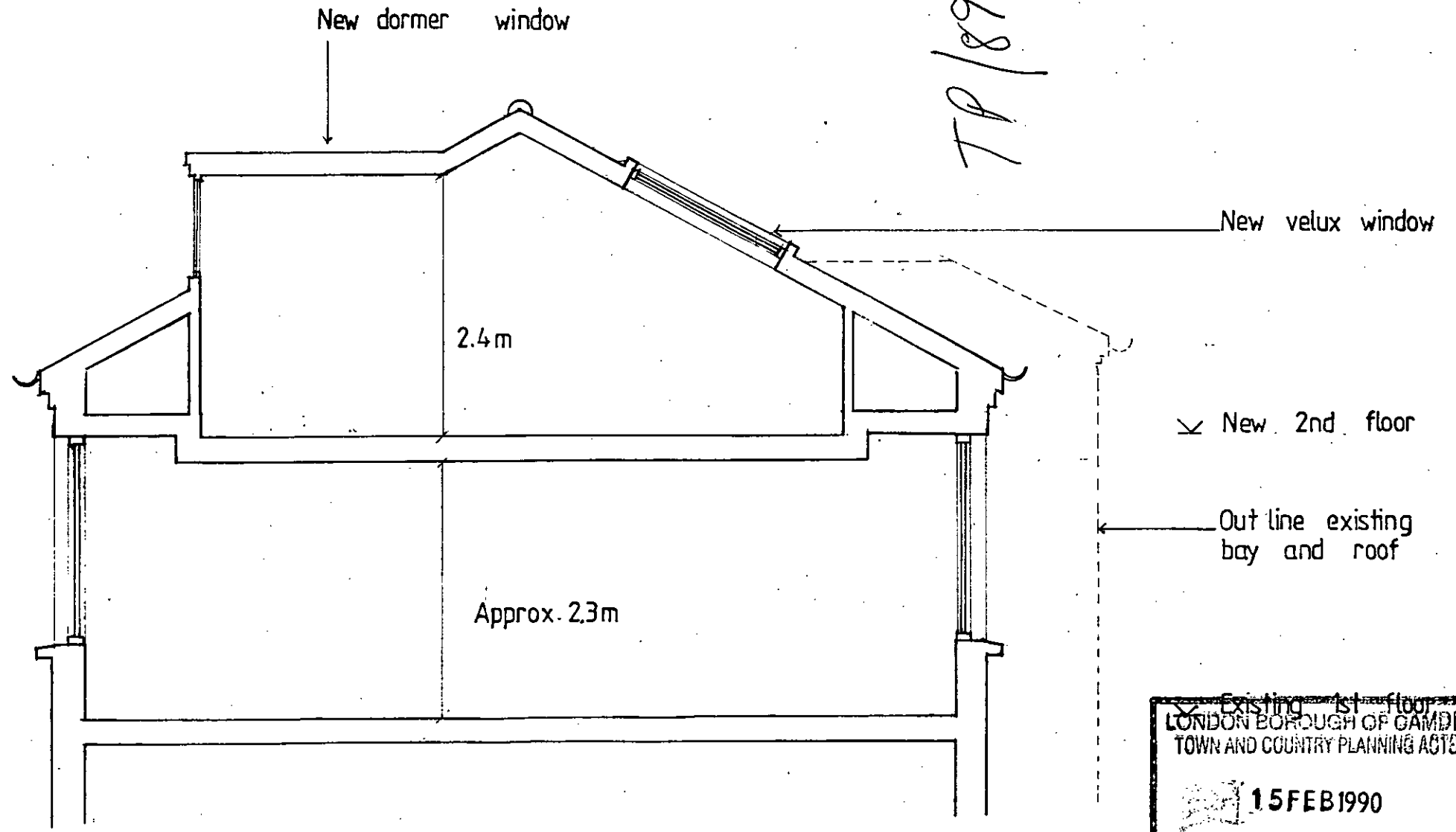
39 KINGSGATE RD NW6

THE FRONT AND BACK ELEVATION

do not scale this drawing. All dimensions to be checked on site

Dwg no KR/11^B
 Date 16/11/89
 Scale 1:100

TP/89 05240/R2



Existing 1st floor
 LONDON BOROUGH OF CAMDEN
 TOWN AND COUNTRY PLANNING ACTS
 15 FEB 1990
 PLANS APPROVED
 ON BEHALF OF THE COUNCIL

Rev A 3/1/90 Front dormer window changed to velux window.

PETER TIGG
 PARTNERSHIP
 ARCHITECTS-DESIGNERS
 WALMER COURTYARD
 225 WALMER ROAD
 HOLLAND PARK
 LONDON W11 4EY
 TEL: 01 221 5566

3rd 39 KINGSGATE RD NW 6

This Section showing existing 1st floor level + new 2nd floor construction

do not scale this drawing : all dimensions to be checked on site

Draw no KR/121
 Date 17/11/89
 Scale 1:50

PETER TIGG PARTNERSHIP
ARCHITECTS-DESIGNERS
WALMER COURTYARD
225 WALMER ROAD
HOLLAND PARK
LONDON W11 4EY
TEL: 01 221 5588

Site 39 KINGSGATE RD. 76

This **ROOF LEVEL PLAN**
(proposal A)

Dwg no
KR/06 c.
Date **14/11/89**
Scale **1:50**

TP890524UR2

do not scale this drawing : all dimensions to be checked on site

Rev A 16/11/89 Dormer window changed and made smaller.
49.62 sq.m added to gross internal floor area

Rev B 20/11/89 Plan changed to kitchen and dining/living.
Dormer window changed. Gross floor area (internal) reduced.

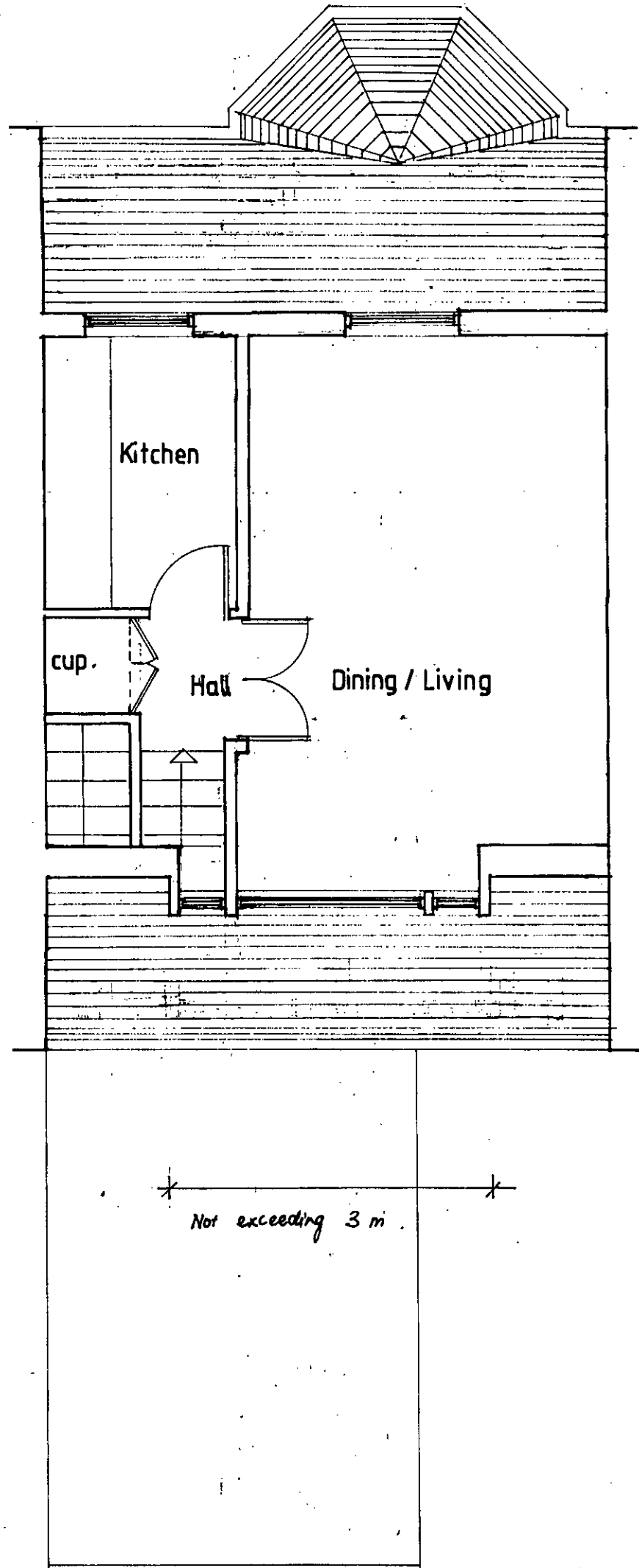
Rev C 3/1/90 Front dormer window changed to velux window.

5 Person / 3 Bedroom Flat

Gross internal floor area - 23.46 sq.m + 49.62 sq.m

LONDON BOROUGH OF CAMDEN
PLANNING AND TRANSPORT
DEPARTMENT
- 9 JAN 1990
RECEIVED

LONDON BOROUGH OF CAMDEN
TOWN AND COUNTRY PLANNING ACTS
15 FEB 1990
PLANS APPROVED
ON BEHALF OF THE COUNCIL



PETER TIGG PARTNERSHIP
ARCHITECTS-DESIGNERS
WALMER COURTYARD
226 WALMER ROAD
HOLLAND PARK
LONDON W11 4EY
TEL: 01 - 231 8888

39 KINGSGATE RD W6

Draw no
KR/05 B
Date **14/11/89**
Scale **1:50**

THE FIRST FLOOR PLAN
(proposal A)

do not scale this drawing : all dimensions to be checked on site

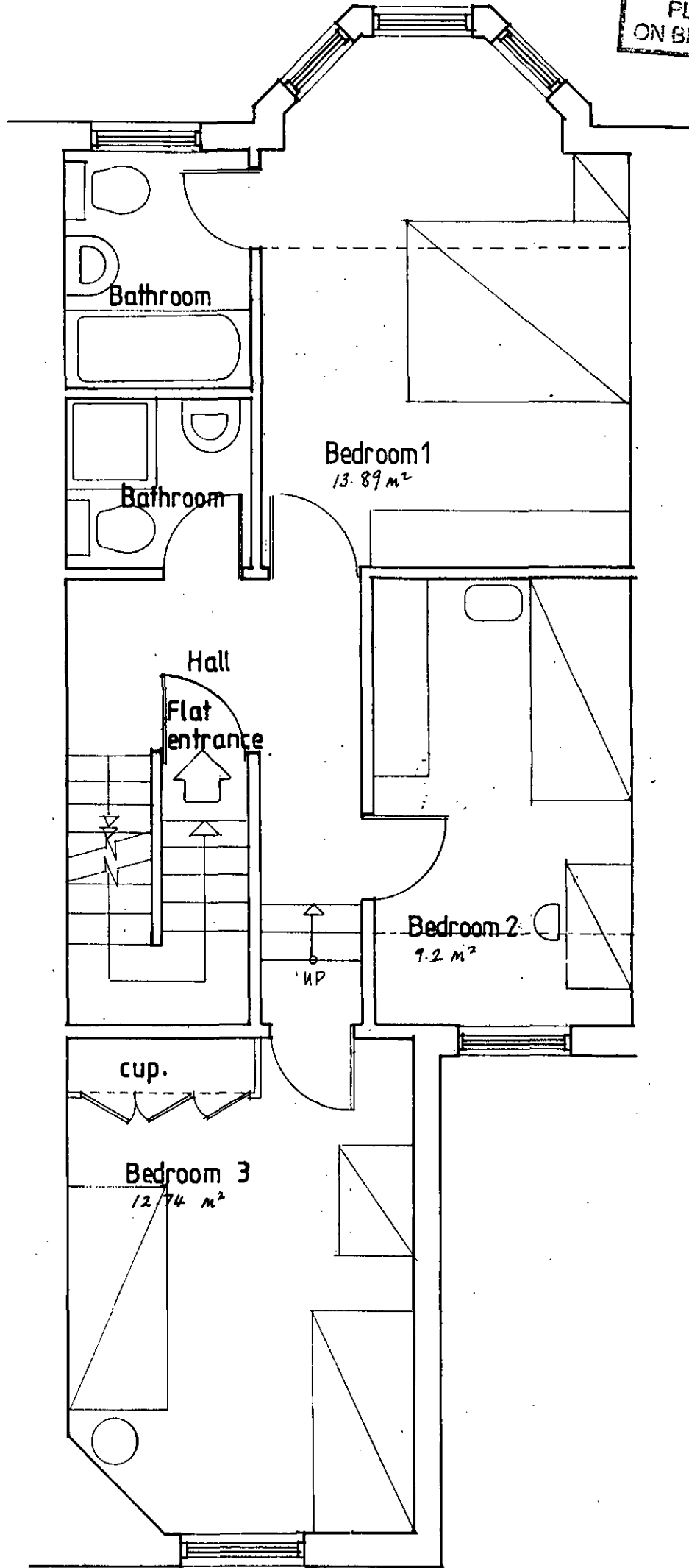
Rev A 16/11/89. Flat entrance marked on and gross internal floor area - 52.64 sq.m added.
Rev B 20/11/89 Plans changed to 2 bathrooms and 2 bedrooms.

5 Person / 3 Bedroom Flat

Gross internal floor area - 49.62 sq.m + 23.46 sq.m

LONDON BOROUGH OF CAMDEN
TOWN AND COUNTRY PLANNING ACTS
15 FEB 1990
PLANS APPROVED
ON BEHALF OF THE COUNCIL

TP8905240 R1



LONDON BOROUGH OF CAMDEN
PLANNING AND TRANSPORT
DEPARTMENT
22 NOV 1989
RECEIVED

PETER TIGG PARTNERSHIP ARCHITECTS-DESIGNERS
WALMER COURTYARD
225 WALMER ROAD
HOLLAND PARK
LONDON W11 4EY
TEL: 01 - 221 8866

39 KINGSGATE RD
NW 6
GROUND FLOOR PLAN -
(as proposed)

DRG no KR/02
Date 3/11/89
Scale 1:50

do not scale this drawing: all dimensions to be checked on site
REV A 16/11/89 Entrances marked out. Door to upstairs flat removed.
Stairs dotted on. New window in flank elevation.
2 Person / 1 Bedroom Flat
Gross internal floor area - 45.64 sq.m.

LONDON NORTH OF CAMDEN
TOWN AND COUNTRY PLANNING ACTS
15 FEB 1990
PLANS APPROVED
ON BEHALF OF THE COUNCIL

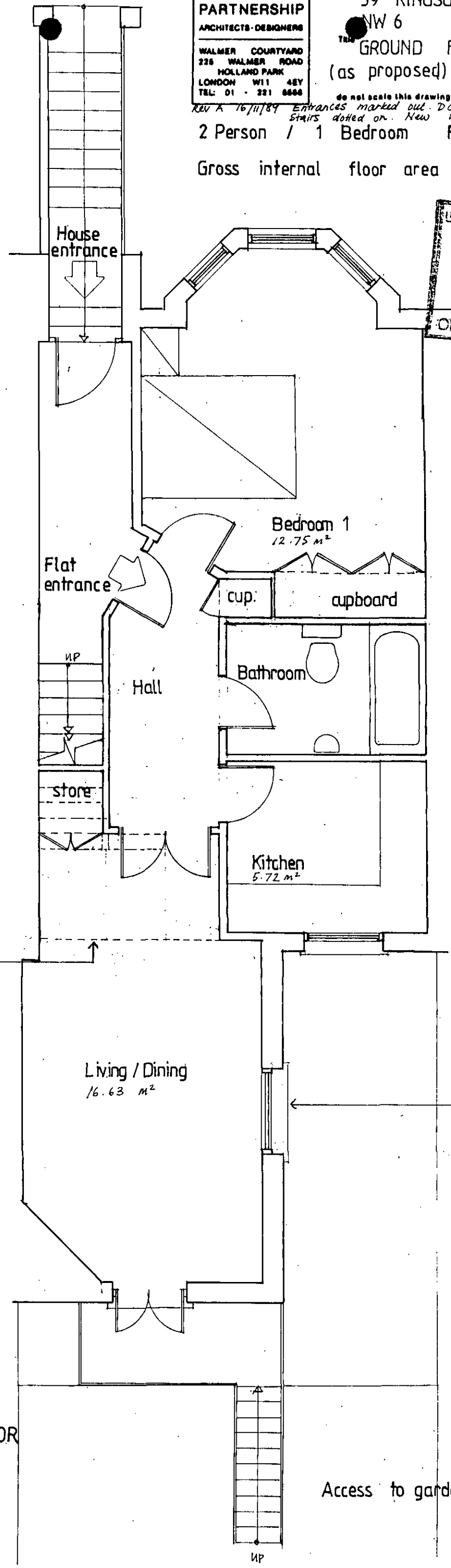
T890524/R2

Line of bulkhead over

new window in flank elevation to match existing to kitchen (and at same level)

GROUND FLOOR

Access to garden



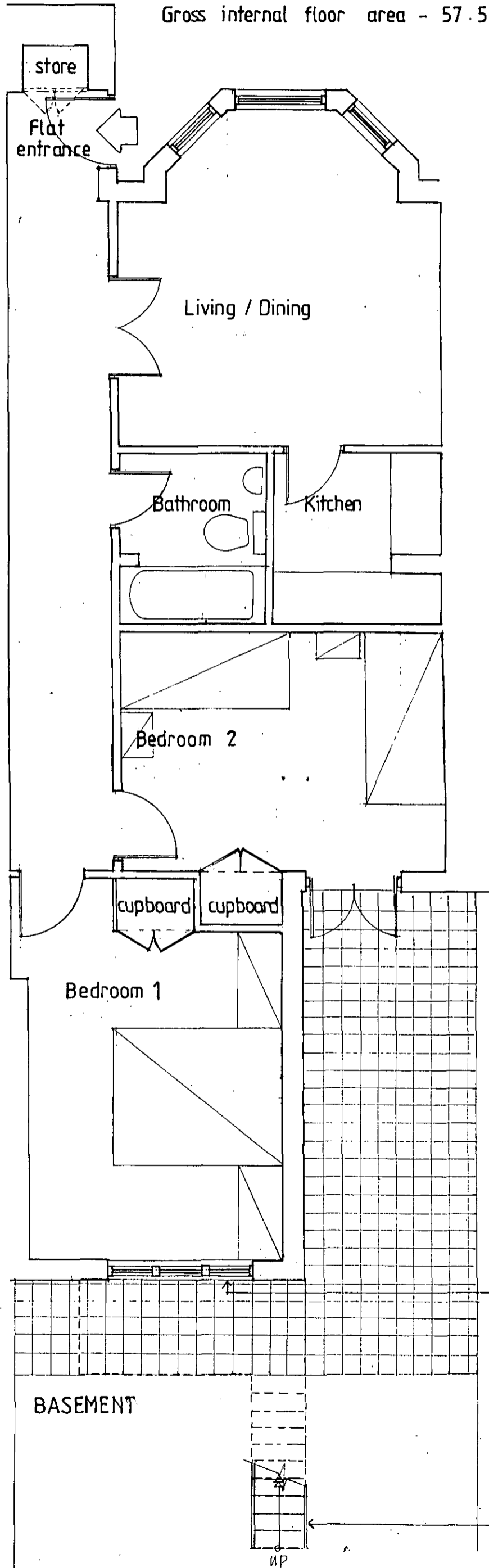
PETER TIGG
PARTNERSHIP
ARCHITECTS-DESIGNERS
WALMER COURTYARD
226 WALMER ROAD
HOLLAND PARK
LONDON W11 4EY
TEL: 01 - 221 8868

Site 39 KINGSGATE RD
NW 6
Title BASEMENT PLAN -
(as proposed)

Draw no KR/01^
Date 3/11/89
Scale 1:50

do not scale this drawing : all dimensions to be checked on site
REV A 16/11/89 Furniture arrangement in Bed 2 changed.
Patio added. Balcony and stairs dotted on.
2 Person / 2 Bedroom Flat

Gross internal floor area - 57.5 sq.m.



LONDON BOROUGH OF CAMDEN
TOWN AND COUNTRY PLANNING ACTS
15 FEB 1990
PLANS APPROVED
ON BEHALF OF THE COUNCIL

TP/8905240/R2