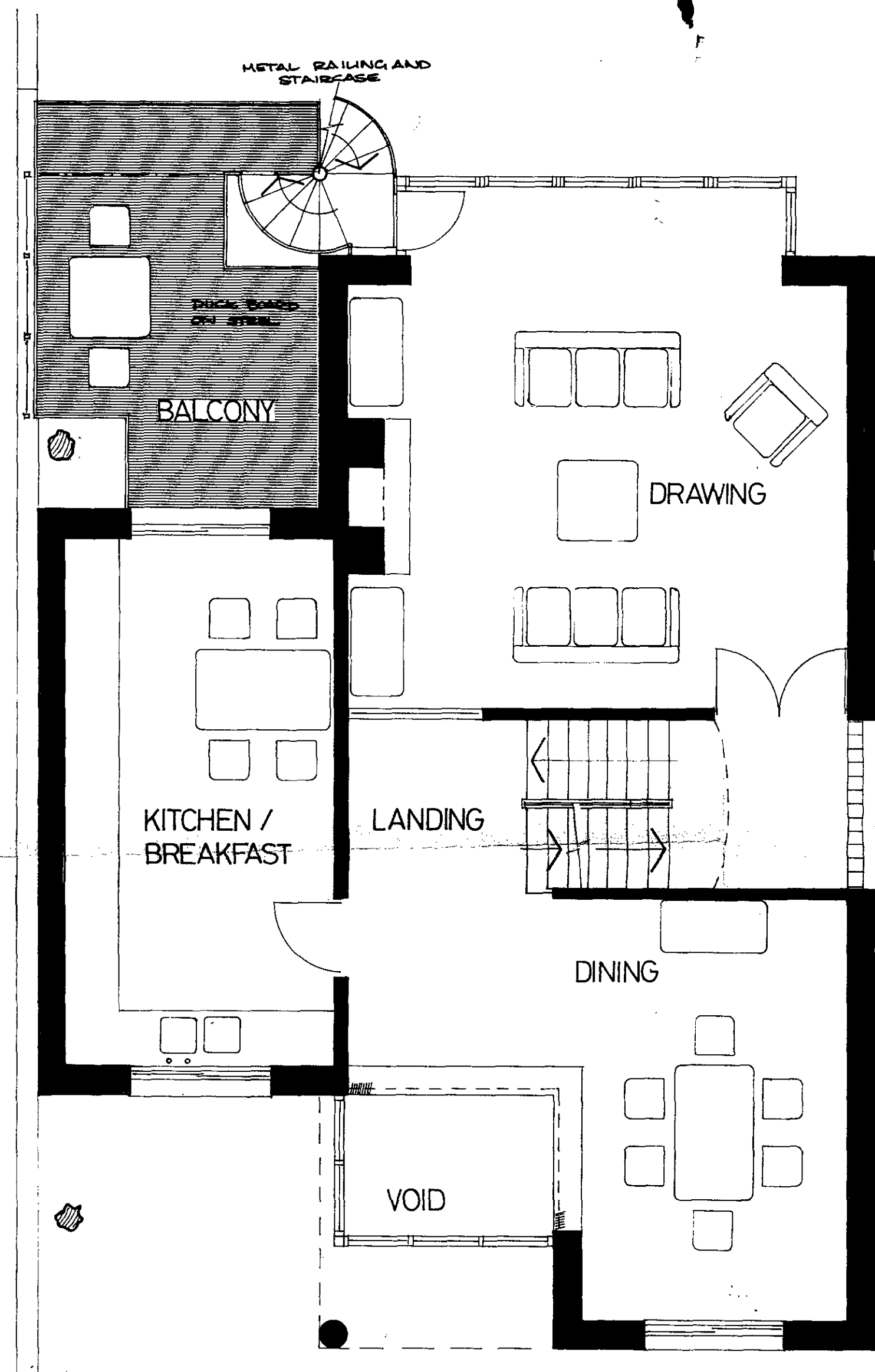
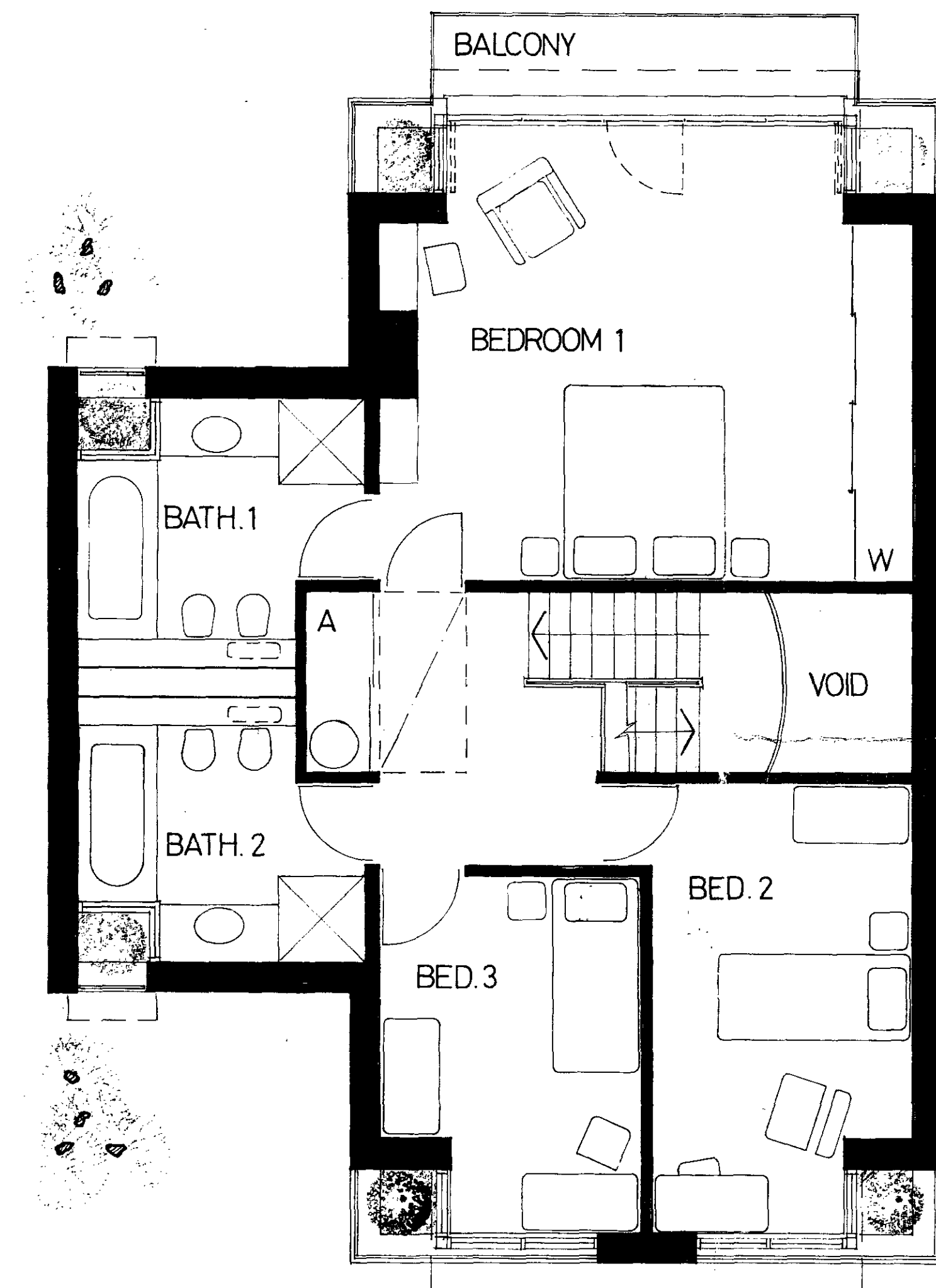


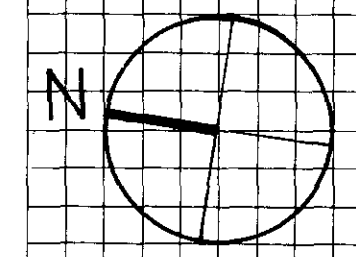
GROUND



FIRST



SECOND



CTP/H8/2/4/36583. (RS)

REVISIONS  
Agreed by memo 18/10/83.

**Michael Manser Associates**  
8 Hammersmith Broadway London W6 7AL 01-741 4381

contract  
11, STRATHRAY GDNS.  
to rear of 42, Eton Av. NW3

drawing  
FLOOR PLANS OF  
PROPOSED HOUSE

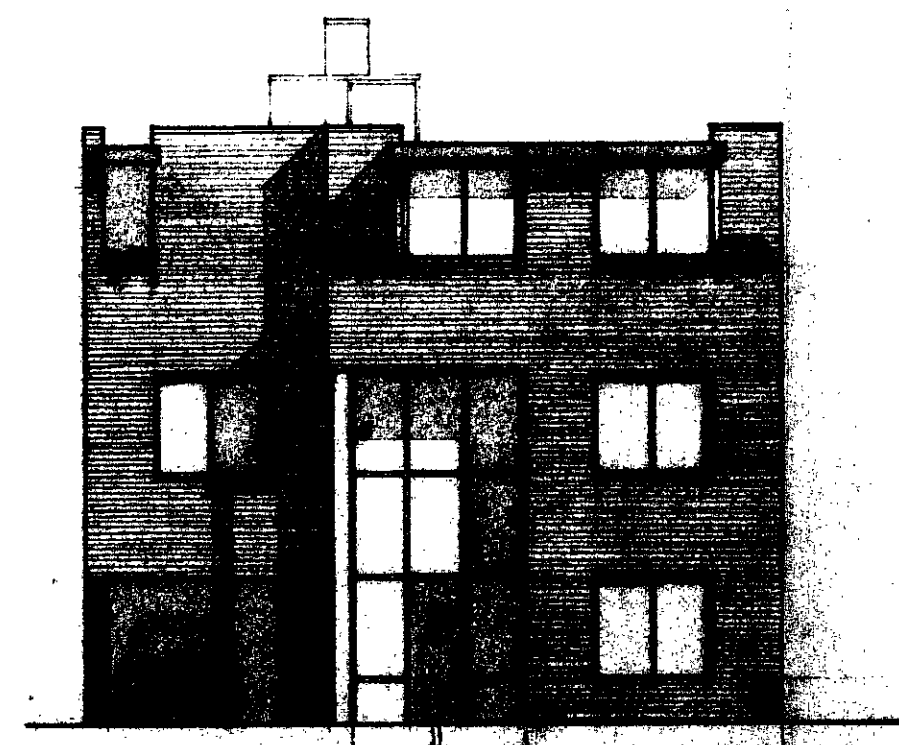
scale  
1:50

date  
7/83

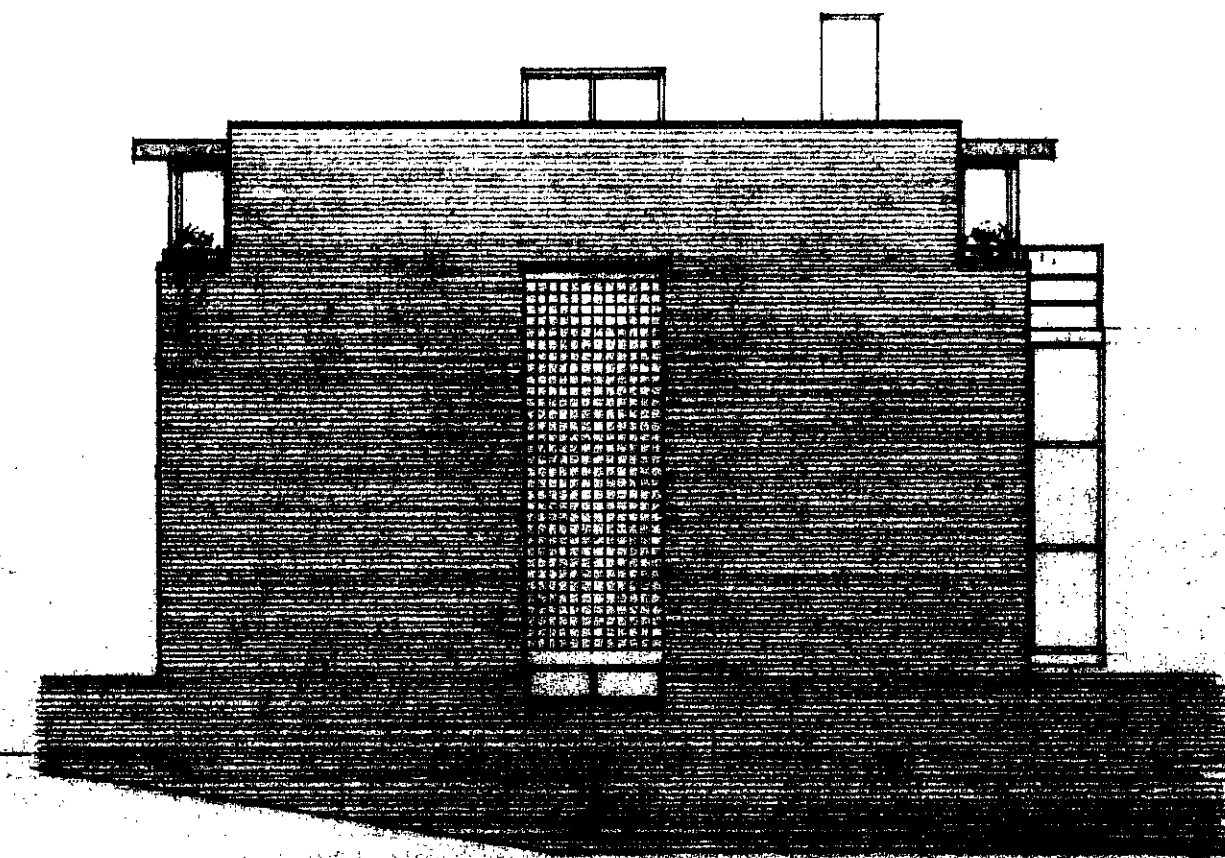
number  
540 H D 2

revision

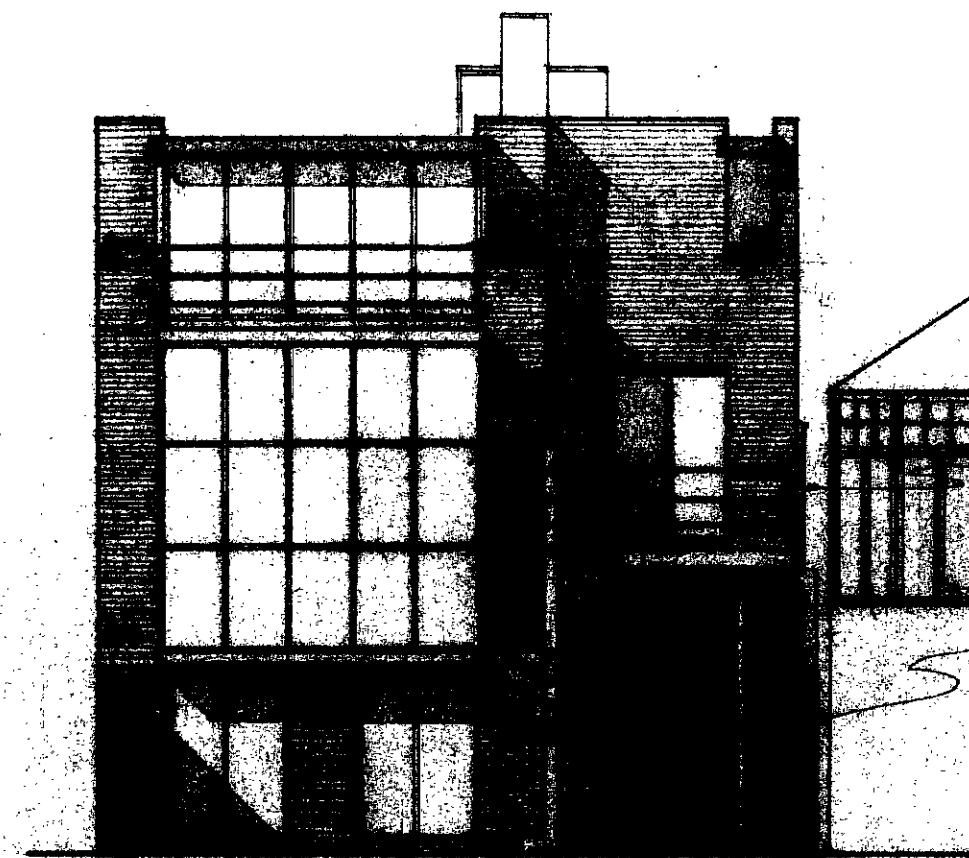




WEST ELEVATION (front)

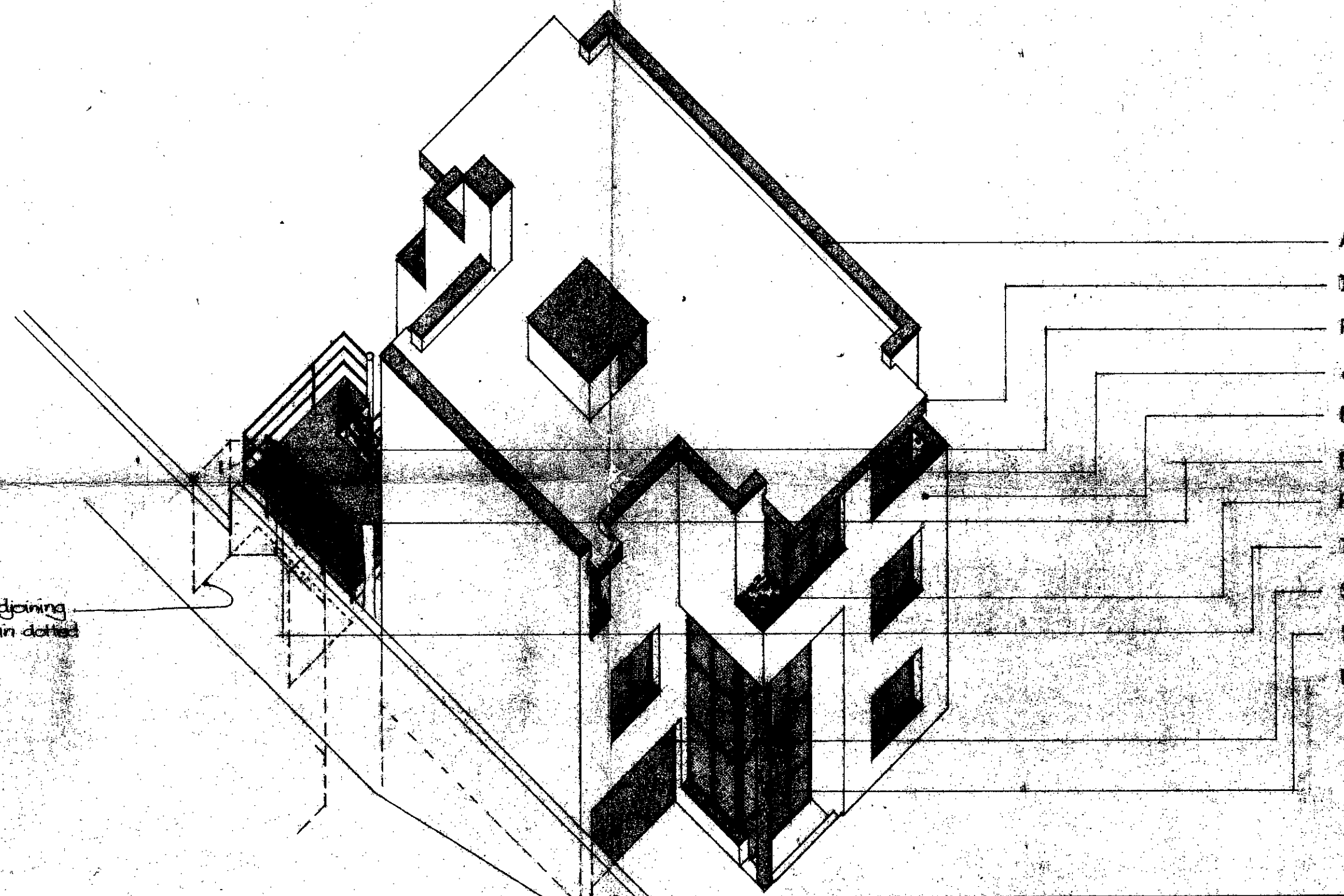


SOUTH ELEVATION (side)



EAST ELEVATION (back)

obscured glass screen  
 adjoining conservatory  
 existing garden wall rebuilt in matching bricks



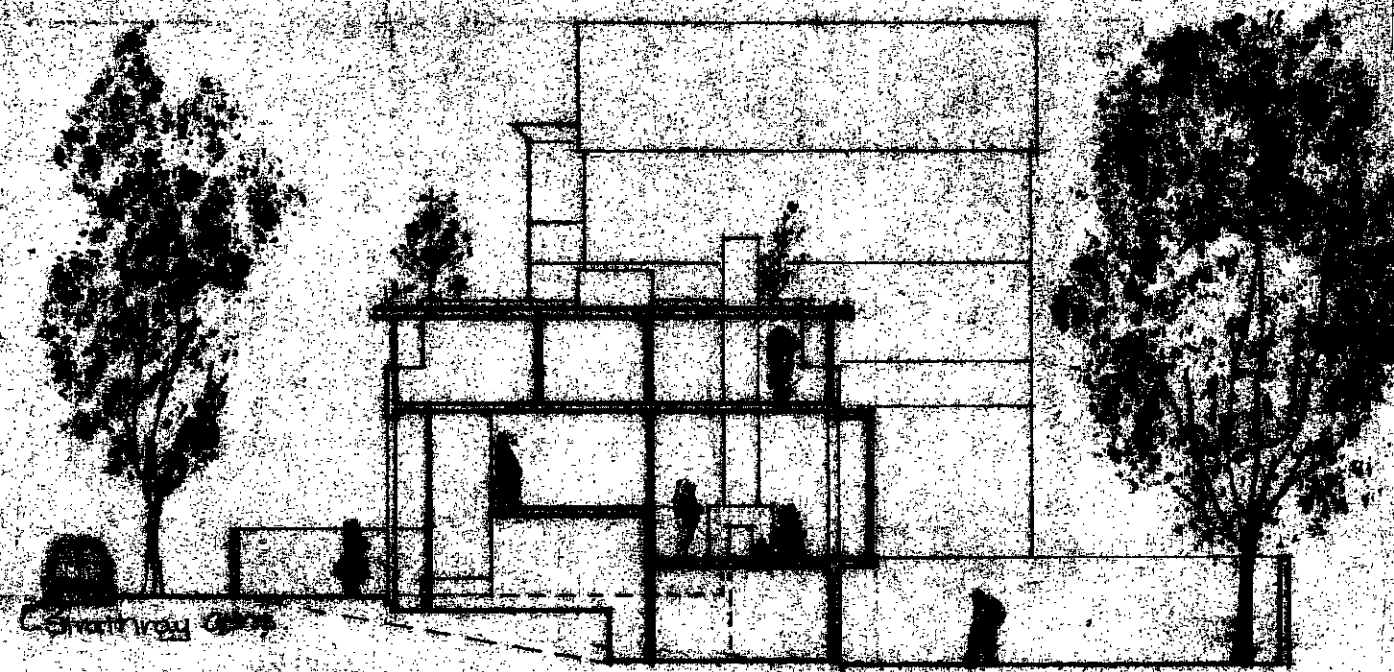
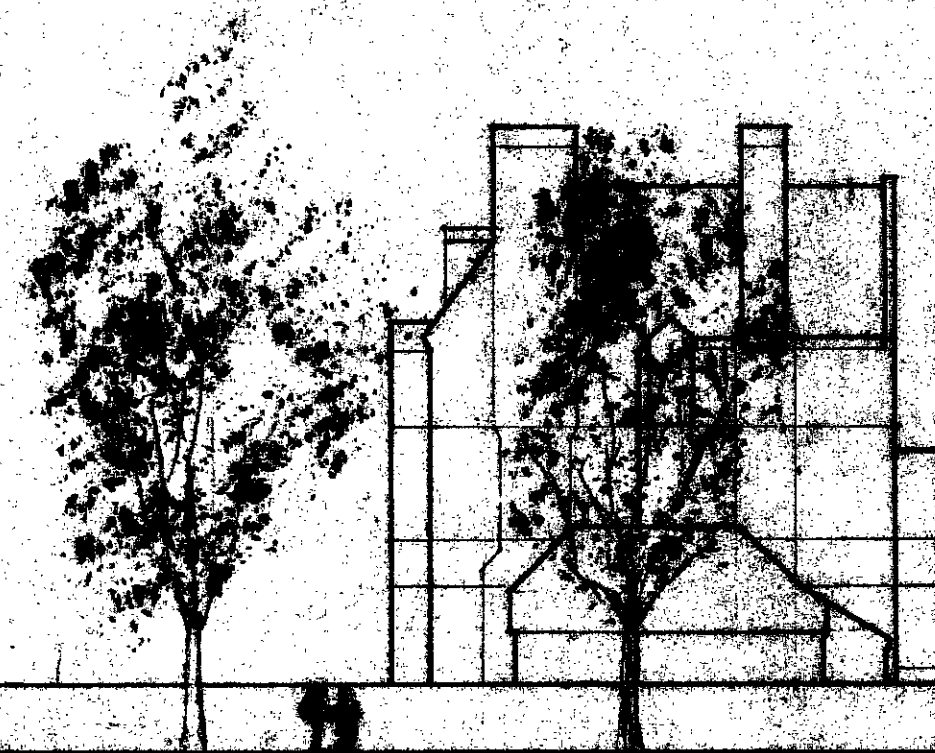
AXONOMETRIC

- Anodised Aluminium Copings
- Timber Facias Stained Black
- Painted Steel Handrails
- Anodised Aluminium Horizontal Sliding Windows and Gills
- Red Facing Brickwork to Match Existing House
- Painted Steel and Obscured Glass Screen
- Flaring Base
- Timber Deck Boomed Deck to Balcony
- Solid Hardwood Doors Lacquered
- Stainless Steel Cladding to Column
- Existing Garden Wall Rebuilt in Matching Bricks

position of adjoining conservatory in dotted



ELEVATION TO STRATHRAY GDNS.



SITE SECTION

LONDON BOROUGH OF CAMDEN  
 TOWN AND COUNTRY PLANNING ACT  
 18 OCT 1983  
 PLANS APPROVED  
 ON BEHALF OF THE COUNCIL

**Michael Manser Associates**

3 Manserworth Broadway London W8 2AL 01-741-6881  
 contract  
 11 STRATHRAY GDNS  
 to rear of 42 Eton Av.  
 LONDON NW 3

drawing  
**ELEVATIONS OF PROPOSED HSE.**

scale 1:100 + 1:200 date 7/83

number 540 H D3 revision B

CTP/H8/2/4/36583.(R1)