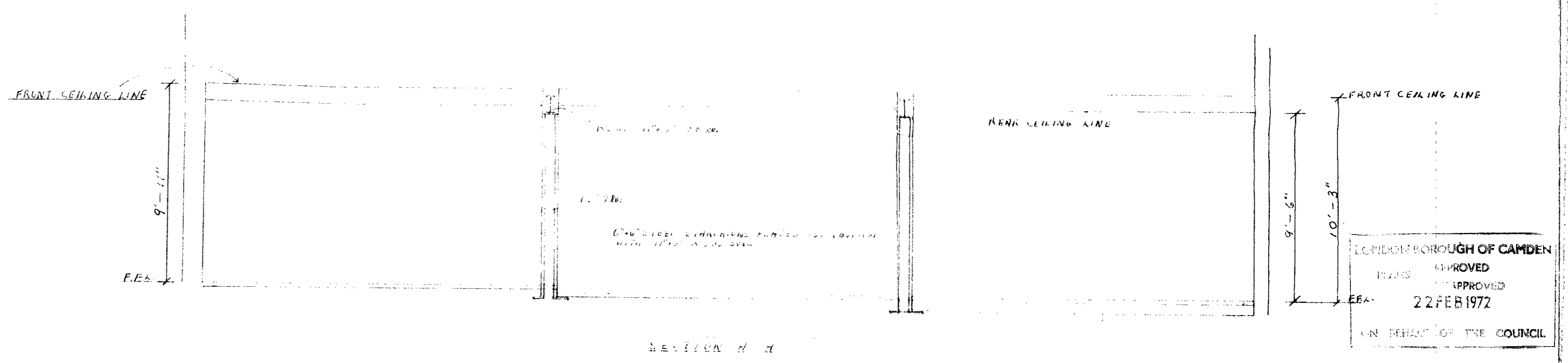
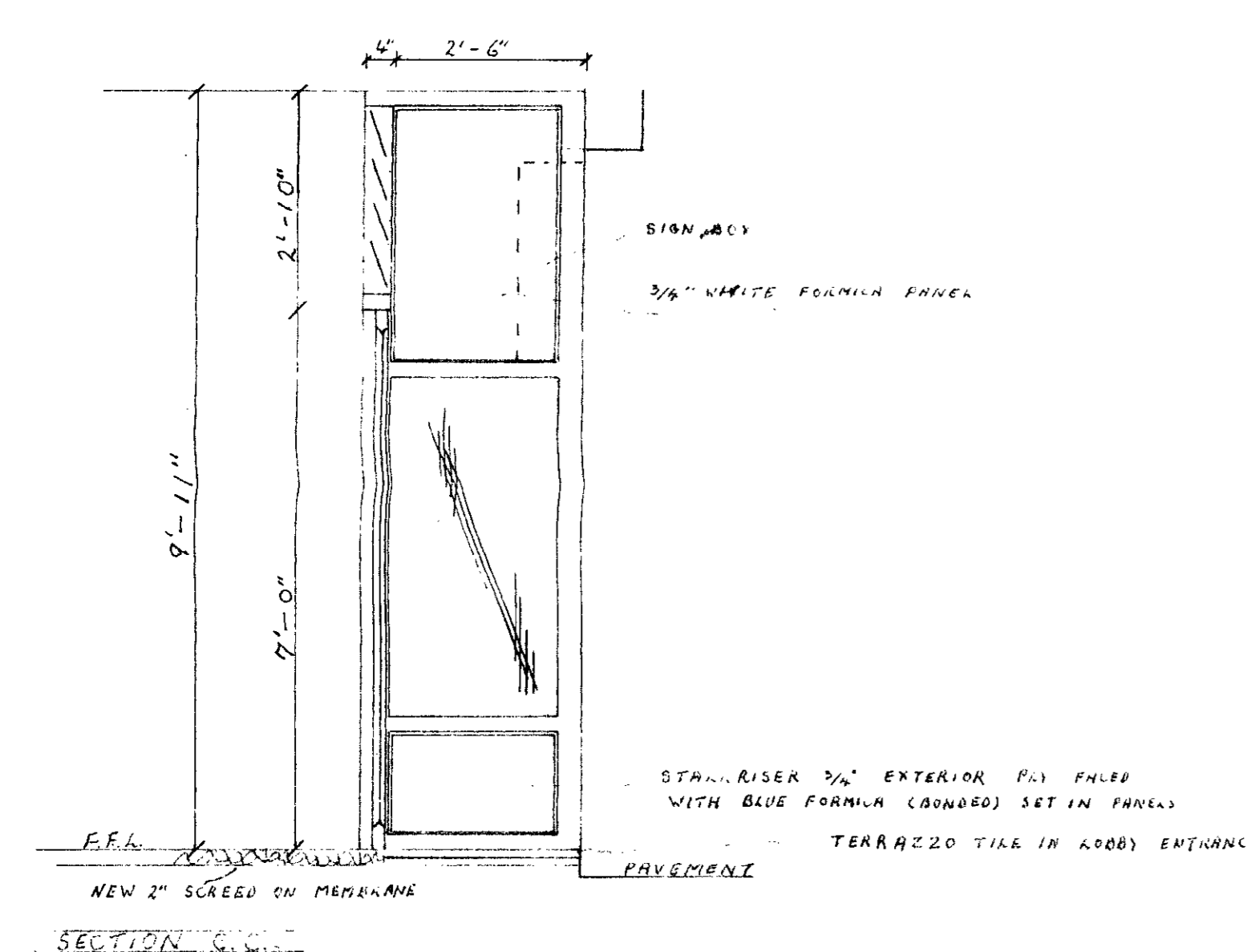
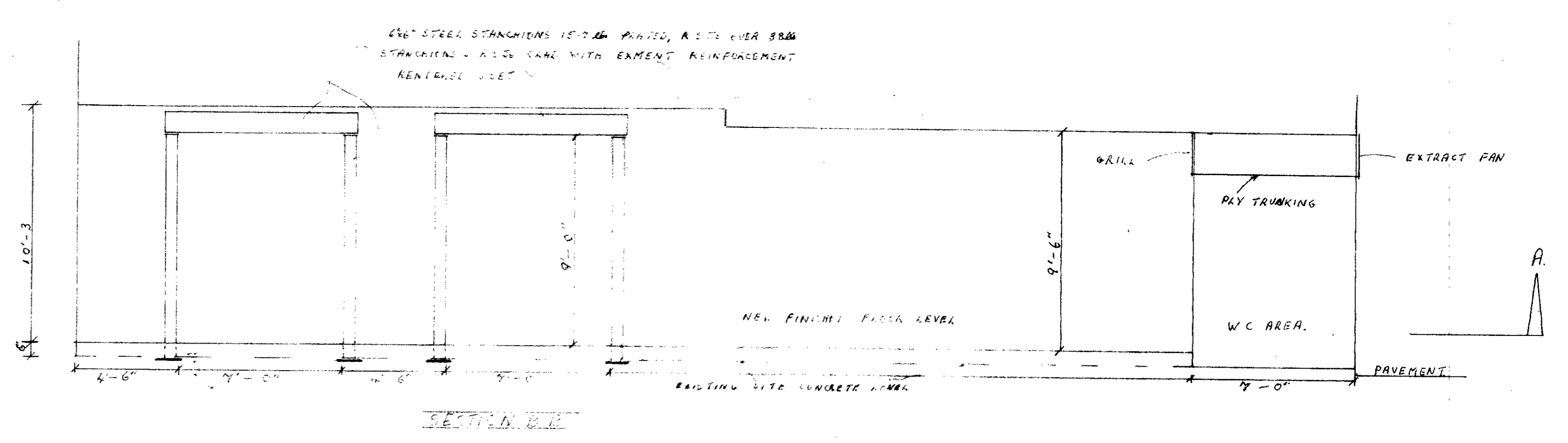


WALLS PLASTER & ART  
FLOORS CONCRETE 2" SUREEED  
COVERED WITH FACETED CARPET

DECORATIONS CEILING & WALLS  
TWO COAT EMULSION  
CEILING WHITE  
WALLS SUMMER WHITE

ELECTRICAL 3 PHASE SUPPLY  
100 AMPS PER PHASE



LONDON BOROUGH OF CAMDEN  
PLANS APPROVED  
22 FEB 1972  
ON BEHALF OF THE COUNCIL

PROPOSED SHOPFRONTS & INTERIOR ALTERATIONS FOR NUBEM BULK BUILDING  
AT UNITS 6-7-8 WINCHESTER RD. DEVELOPMENT SWISS COTTAGE.

APPROVED	DATE	20-1-72	<b>CIVISONS LTD.</b> 100, NEWINGTON GREEN, LONDON SE14 6NU Telephone: 558404
444	DATE	20-1-72	
AR 21082			

H7 7 A 12776