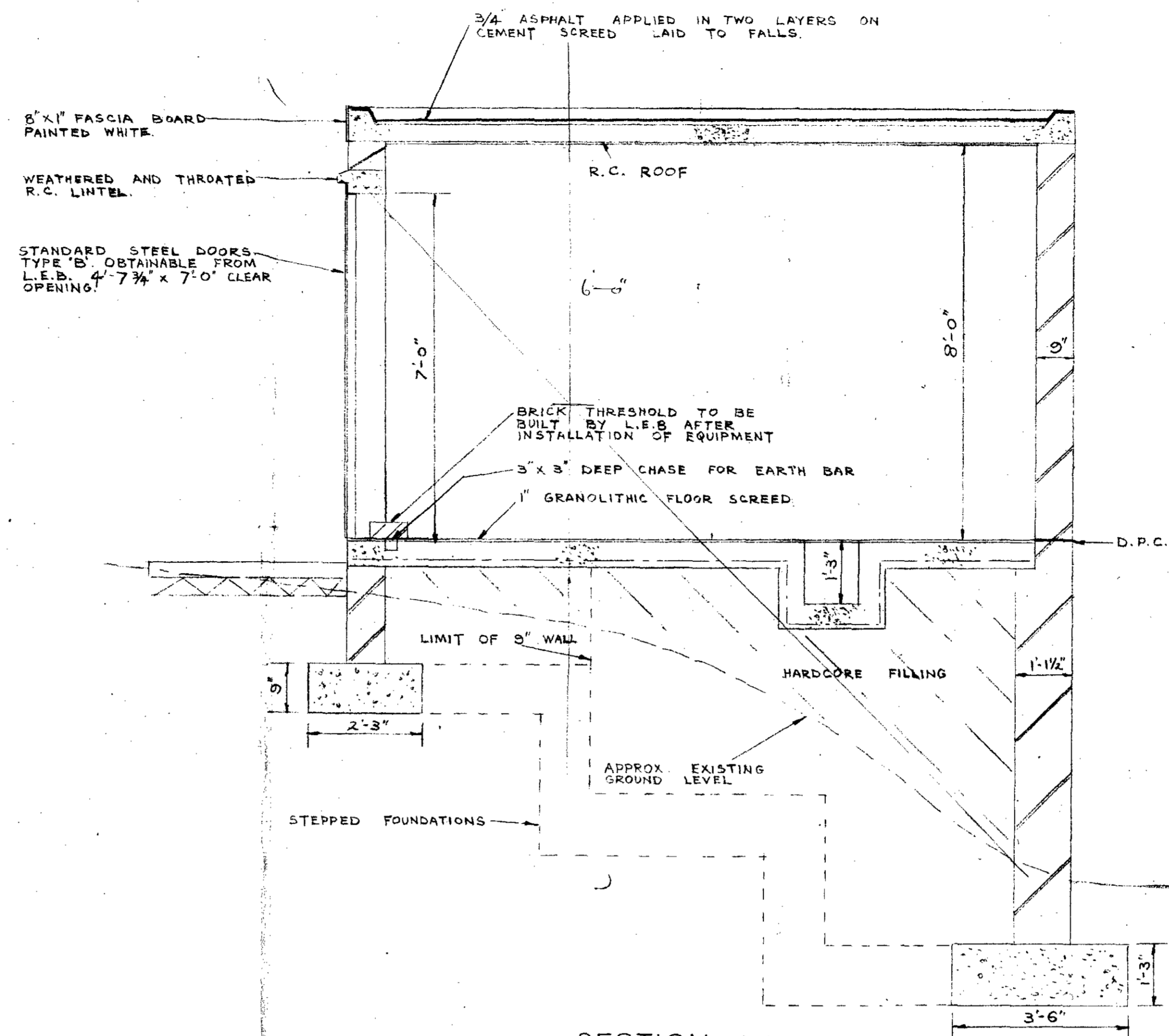
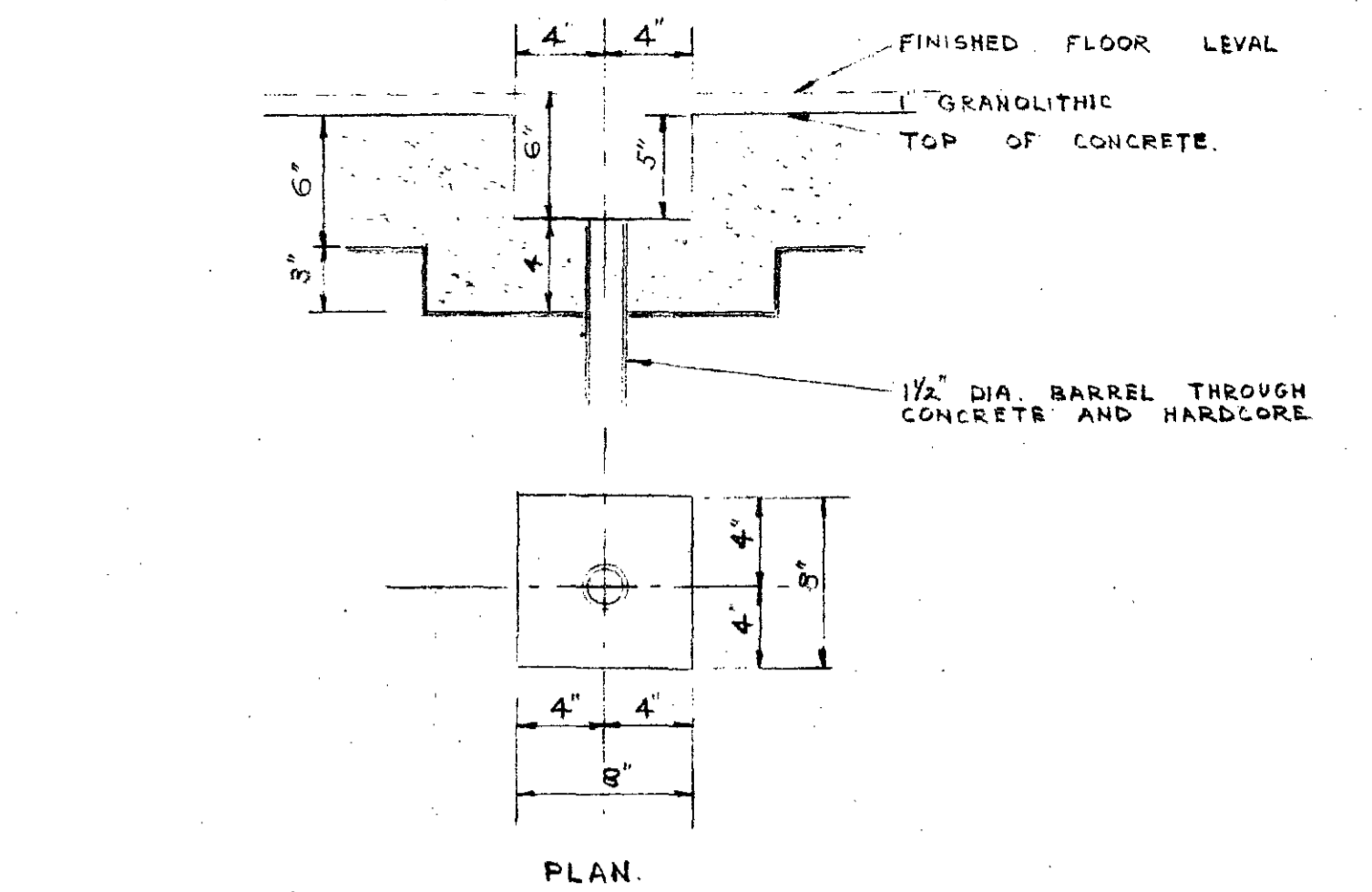


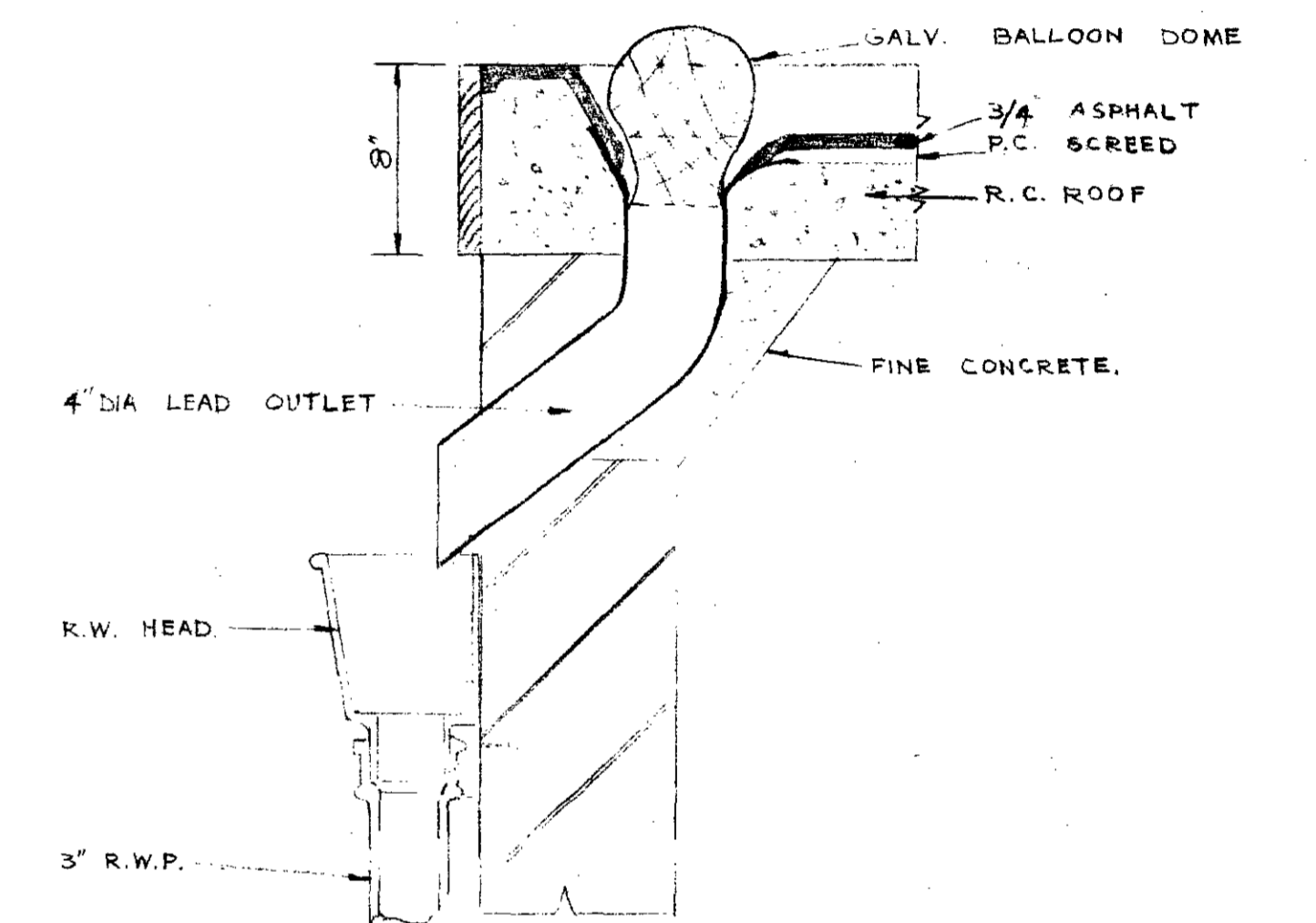
ELEVATION



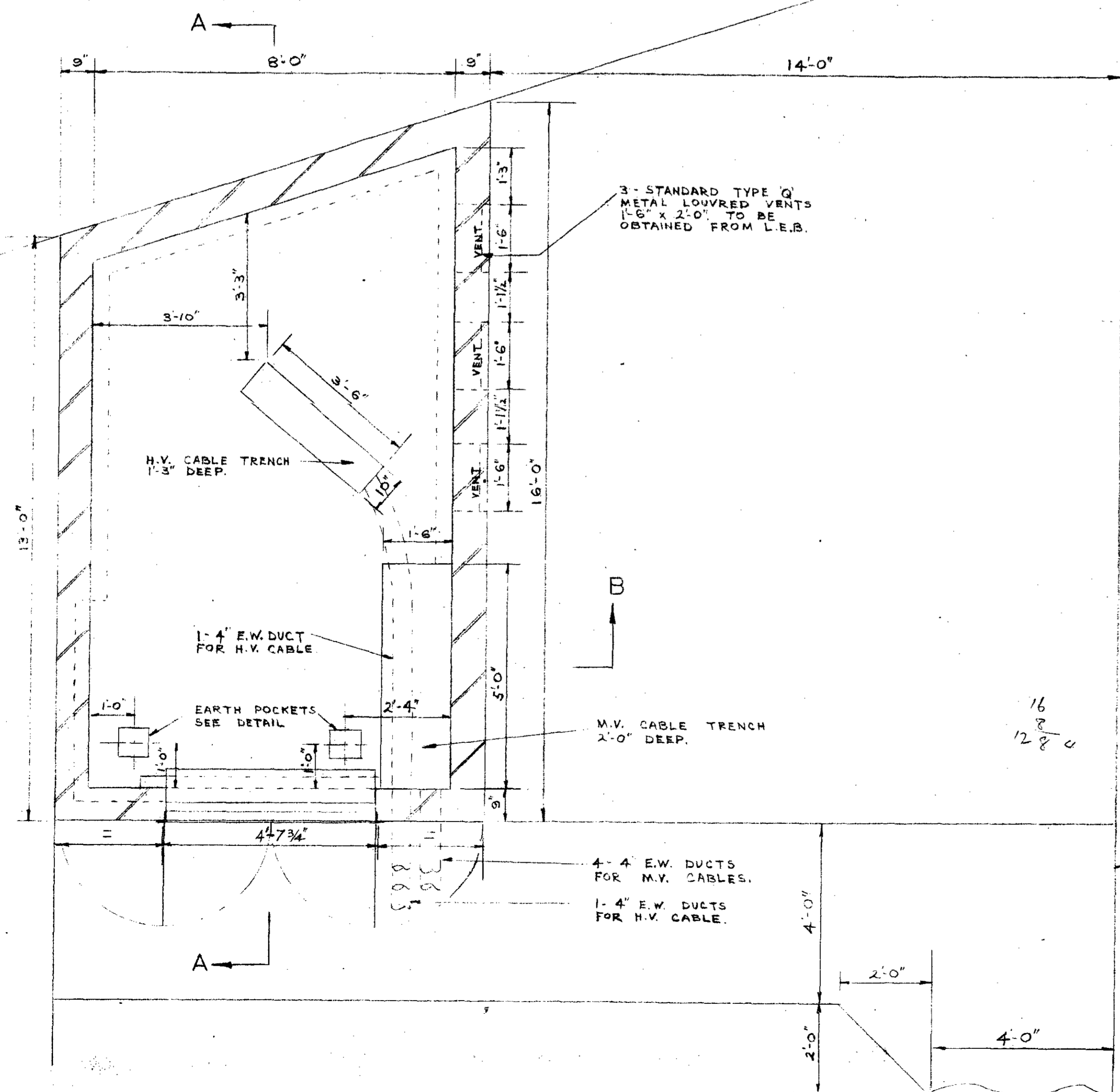
SECTION AA



DETAIL OF EARTH POCKET IN FLOOR
SCALE 1 1/2" = 1'-0"



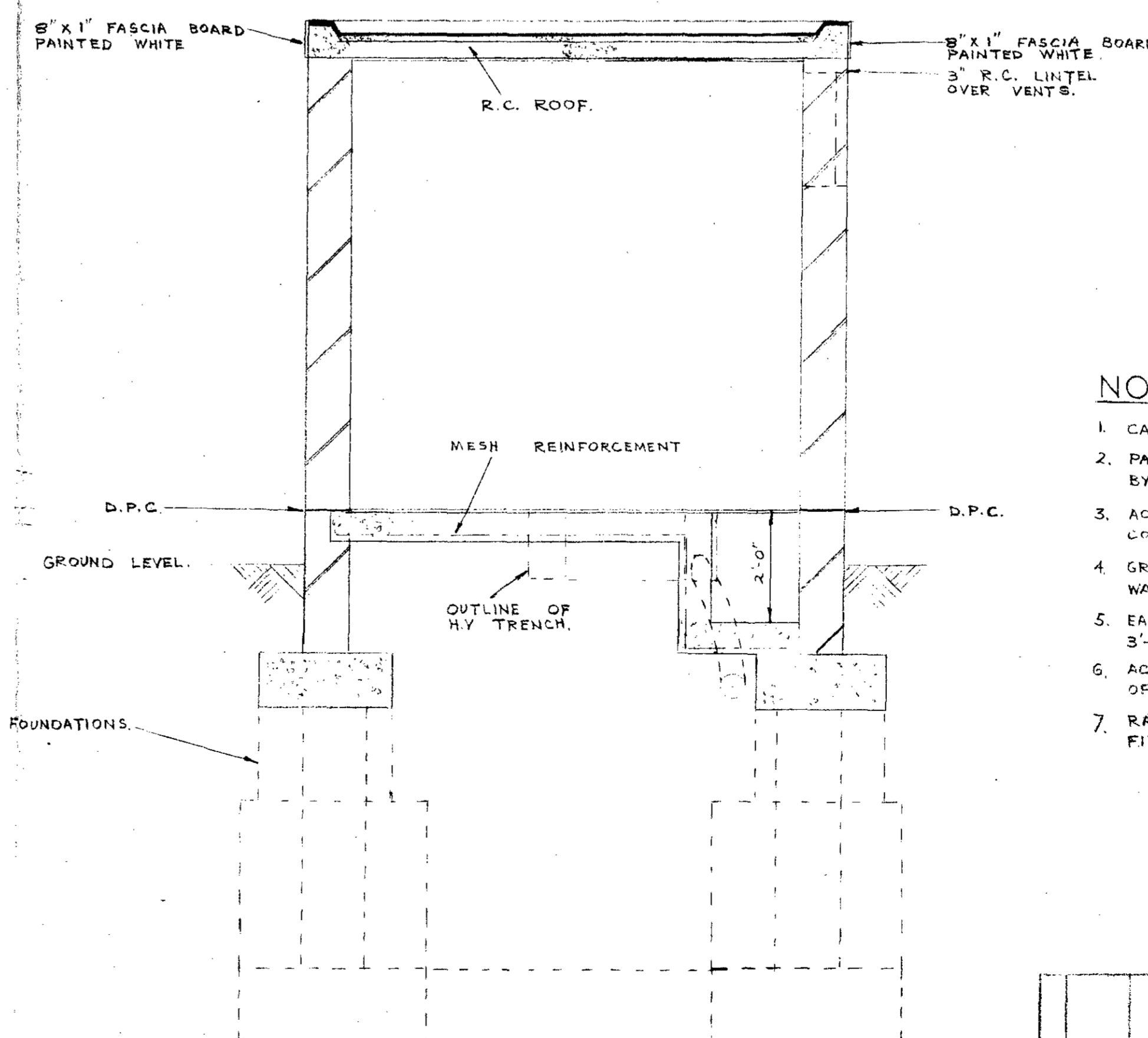
DETAIL OF R.W. CUTLET
SCALE 1 1/2" = 1'-0"



approx 1136 with

16
12 8/16

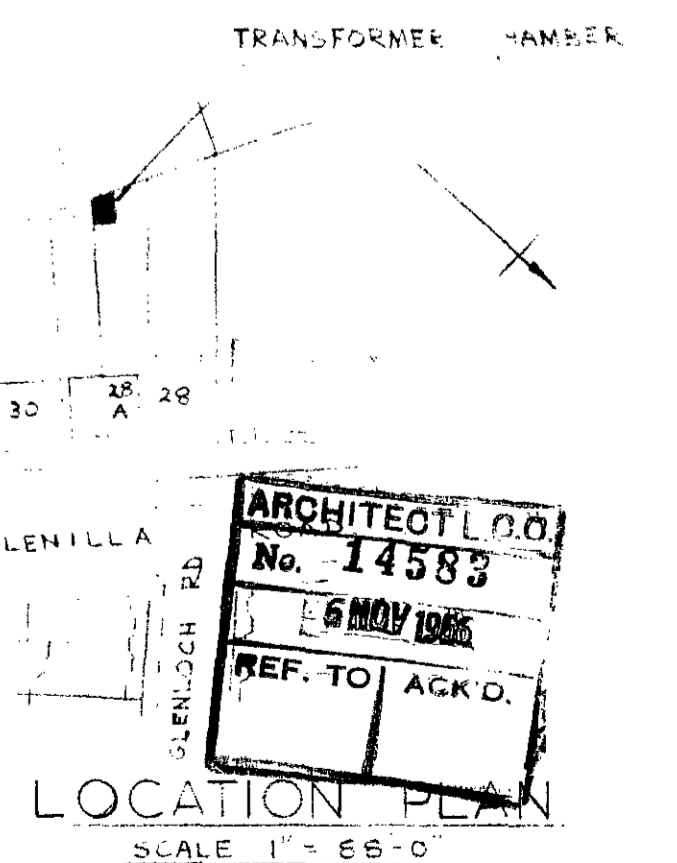
PROVIDE 4" CONCRETE PATH FROM FOOTPATH IN GLENILLA ROAD. WORK TO BE CARRIED OUT AFTER CABLE DUCTS HAVE BEEN LAID.



SECTION BB

NOTES

1. CABLE DUCTS TO BE SUPPLIED AND LAID BY L.E.B.
2. PADLOCK FOR DOORS TO BE SUPPLIED AND FITTED BY L.E.B.
3. ACTUAL DEPTH OF FOUNDATIONS TO SUIT SITE CONDITIONS.
4. GRANOLITHIC FLOOR SCREED TO CONTAIN APPROVED WATERPROOFING MEDIUM.
5. EACH STEP OF FOUNDATION IS NOT TO EXCEED 3'-0" DEEP.
6. ACCESS 6'-0" WIDE WILL BE REQUIRED IN FRONT OF DOORS FOR PASSAGE OF EQUIPMENT.
7. RAIN WATER OUTLET AND HEAD TO BE FITTED WHERE SUITED TO SITE DRAINAGE



LONDON ELECTRICITY BOARD HAMPSTEAD-WILLEDEN DISTRICT LITTON ROAD, HAMPSTEAD, N.W.3	
SCALE: 1/2" = 1'-0"	DATE: 19.10.58
PROJECT: W.G.T.	ORIGINAL FILE NO.
DRAWING NUMBER: HD15/234/66	

6/19/58	REVISED AND REDRAWN
	REVISIONS

28A GLENILLA ROAD
TRANSFORMER
CHAMBER
BUILDING WORK

Approved
11/11/58
11/11/58
11/11/58