

gate to existing
alleyway

spiral stair
from above

WORKSHOP/STUDIO AREA

PARKING

SERVICE BAY

LIFT

ENTRANCE LOBBY

Case Copy
agreed
23/11/90

LONDON BOROUGH OF CANNEN
PLANNING AND TRANSPORT
DEPARTMENT
- 9 JAN 1990
RECEIVED

REVISIONS:

A. stair well, planter, &
entrance changed

B ground floor plan revised
for light industrial use

TP 89 033 07 R3

Clements
& Porter
Architects

58 Bloomsbury St
London WC1B 3QT
Tel: 01-255 3396
Fax: 01-255 1297

Do not scale from this drwg
This drawing is copyright

Project

NEW DEVELOPMENT AT 2-4 SANDALL ROAD
LONDON NW5

Title

PROPOSED GROUND FLOOR PLAN

Notes

See 273.04-06 for plans of upper
floors
See 273.07-09 for elevations

Scale

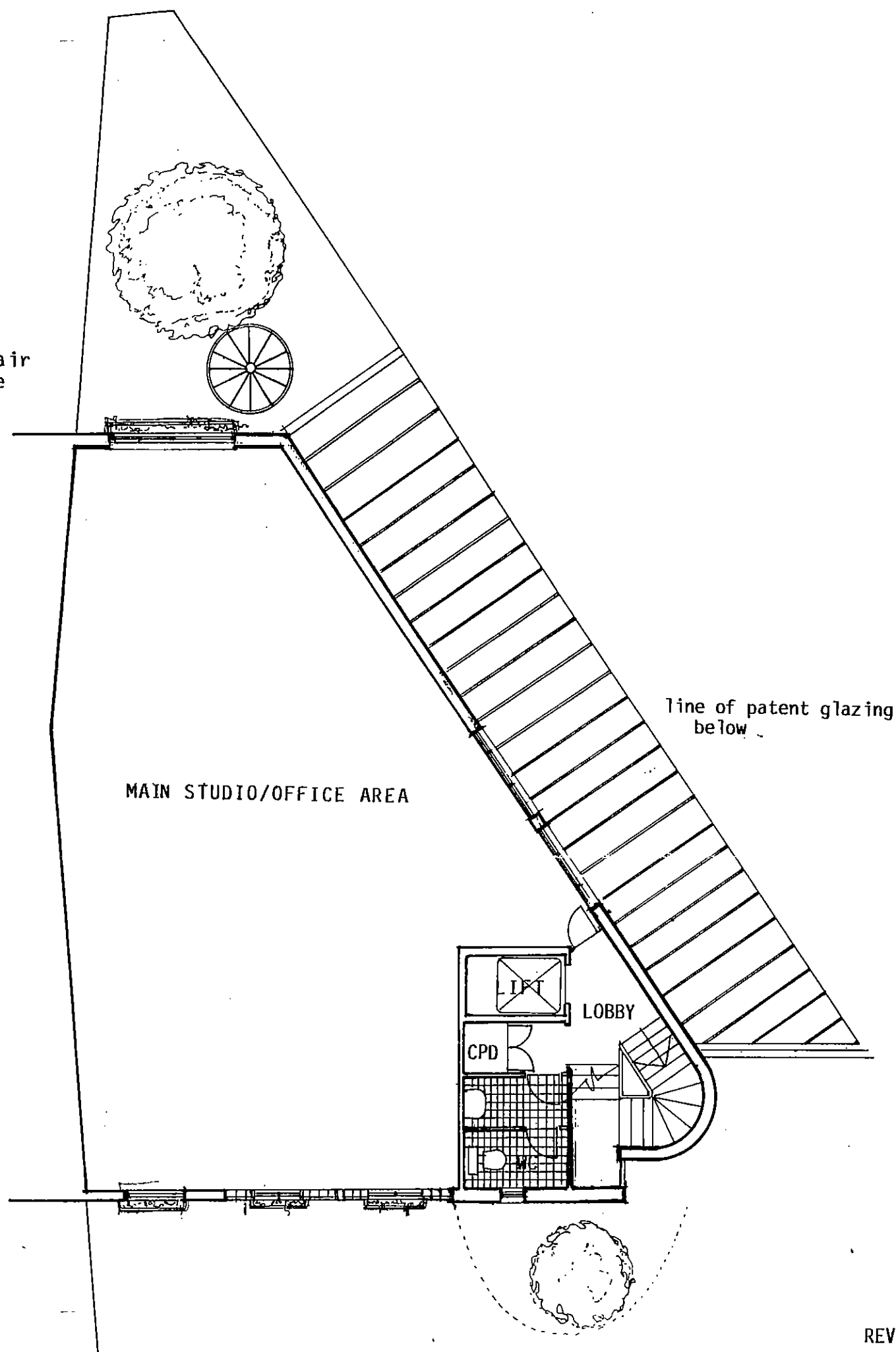
1:100
Date

2.5.89
Drawn by
emc/me

Drwg No
273.03 B

Case Copy
agreed
23/1/90

spiral stair
from above



REVISIONS.:
A stair well changed

LONDON BOROUGH OF KEN
PLANNING AND PORT
DEPARTMENT
20 NOV 1989
RECEIVED

TP8903307R1

**Clements
& Porter
Architects**

58 Bloomsbury St
London WC1B 3QT
Tel: 01-255 3396
Fax: 01-255 1297

Do not scale from this drwg
This drawing is copyright

Project
NEW DEVELOPMENT AT 2-4 SANDALL ROAD
KENTISH TOWN LONDON NW5
Title
PROPOSED FIRST FLOOR PLAN

Notes
See 273.03,06,07 for plans of other
floors
See 273.07-09 for elevations

Scale
1:100
Date
2.5.89
Drawn by
da
Drwg No
273.04 A

Case Copy
agreed
23/11/90

spiral stair
down to patio

timber trellis
screen 2.4 high
spiral stair
from above

ROOF WITH ACCESS
FOR MEANS OF ESCAPE

MAIN OFFICE/STUDIO AREA

LIFT

CPD

LOBBY

REVISIONS:

A stair well changed

B - glass blocks introduced
at rear of building

LONDON BOROUGH OF CROYDON
PLANNING AND BUILDING
DEPARTMENT
20 NOV 1989
RECEIVED

TP8903307R1

**Clements
& Porter
Architects**

58 Bloomsbury St
London WC1B 3QT
Tel: 01-255 3396
Fax: 01-255 1297

Do not scale from this drwg
This drawing is copyright

Project

NEW DEVELOPMENT AT 2-4 SANDALL ROAD,
KENTISH TOWN, LONDON NW5

Title

PROPOSED PLAN AT SECOND FLOOR

Notes

Scale

1:100

Date

9.10.89

Drawn by

I.B.M.

Drwg No

273.05A

spiral stair
down to patio

spiral stair
from above

ROOF WITH ACCESS
FOR MEANS OF ESCAPE

MAIN OFFICE/STUDIO AREA

LIFT

CPD

LOBBY

WC

RECEIVED
1.30.1999
A stair well changed
REVISIONS
PLANNING AND LANDSPORT
Borough of Camden

Case Copy
Agreed
23/1/90

8903307 R1

**Clements
& Porter
Architects**

58 Bloomsbury St
London WC1B 3QT
Tel: 01-255 3396
Fax: 01-255 1297

Do not scale from this drwg
This drawing is copyright

Project

NEW DEVELOPMENT AT 2-4 SANDALL ROAD
KENTISH TOWN, LONDON NW5

Title

PROPOSED PLAN AT THIRD FLOOR LEVEL

Notes

See 273.03,04,06 for other plans
See 273.07-09 for elevations

Scale

1:100
Date
2.5.89

Drawn by

EMC

Drwg No

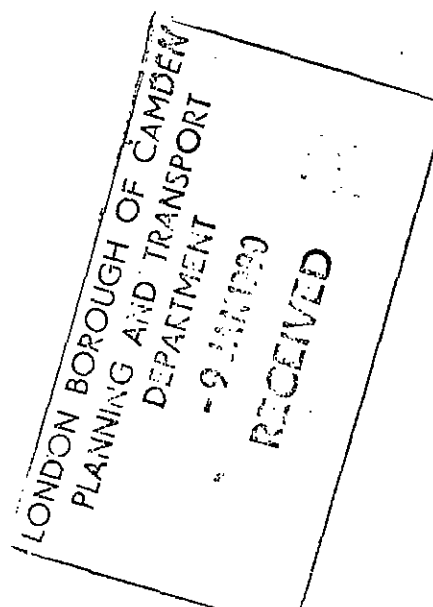
273.05A



REVISIONS:

- A massing and entrance changed
- B alterations to incorporate service bay for ground floor unit

Case Copy
agreed
23/1/90



TP 8903307R3

**Clements
& Porter
Architects**

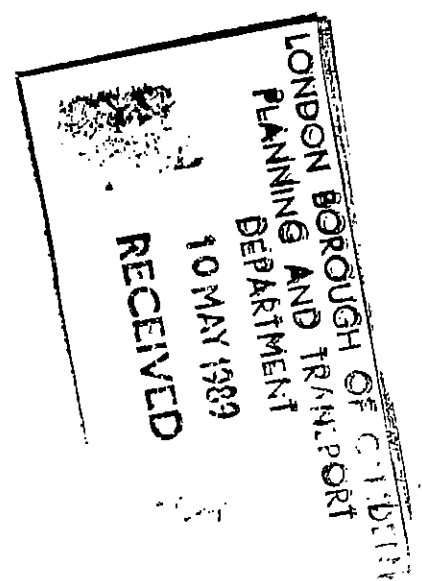
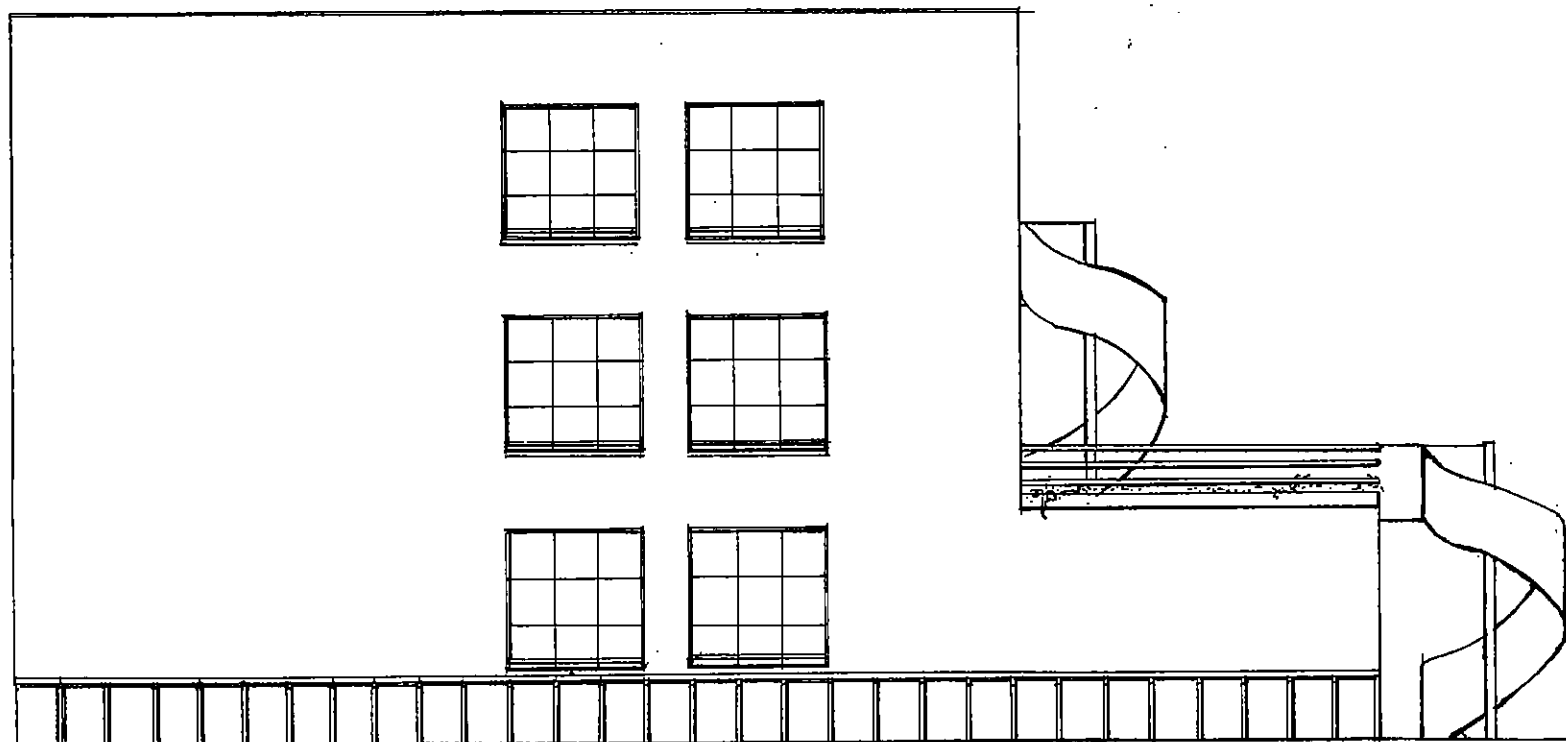
58 Bloomsbury St
London WC1B 3QT
Tel: 01-255 3396
Fax: 01-255 1297

Do not scale from this drwg
This drawing is copyright

Project
NEW DEVELOPMENT AT 2-4 SANDALL ROAD
KENTISH TOWN, LONDON NW5
Title
SOUTH ELEVATION

Notes
see 272.06 for plans
see 272.08,09 for other elevations

Scale 1-100
Date 2-5-89
Drawn by me
Drwg No 273.07B



Case Copy
agreed
23/1/90

TP8903307

**Clements
& Porter
Architects**

58 Bloomsbury St
London WC1B 3QT
Tel: 01-255 3396
Fax: 01-255 1297

Do not scale from this drwg
This drawing is copyright

Project

DEVELOPMENT AT 2-4 SANDALL ROAD
KENTISH TOWN LONDON NW5

Title

NORTH EAST ELEVATION

Notes

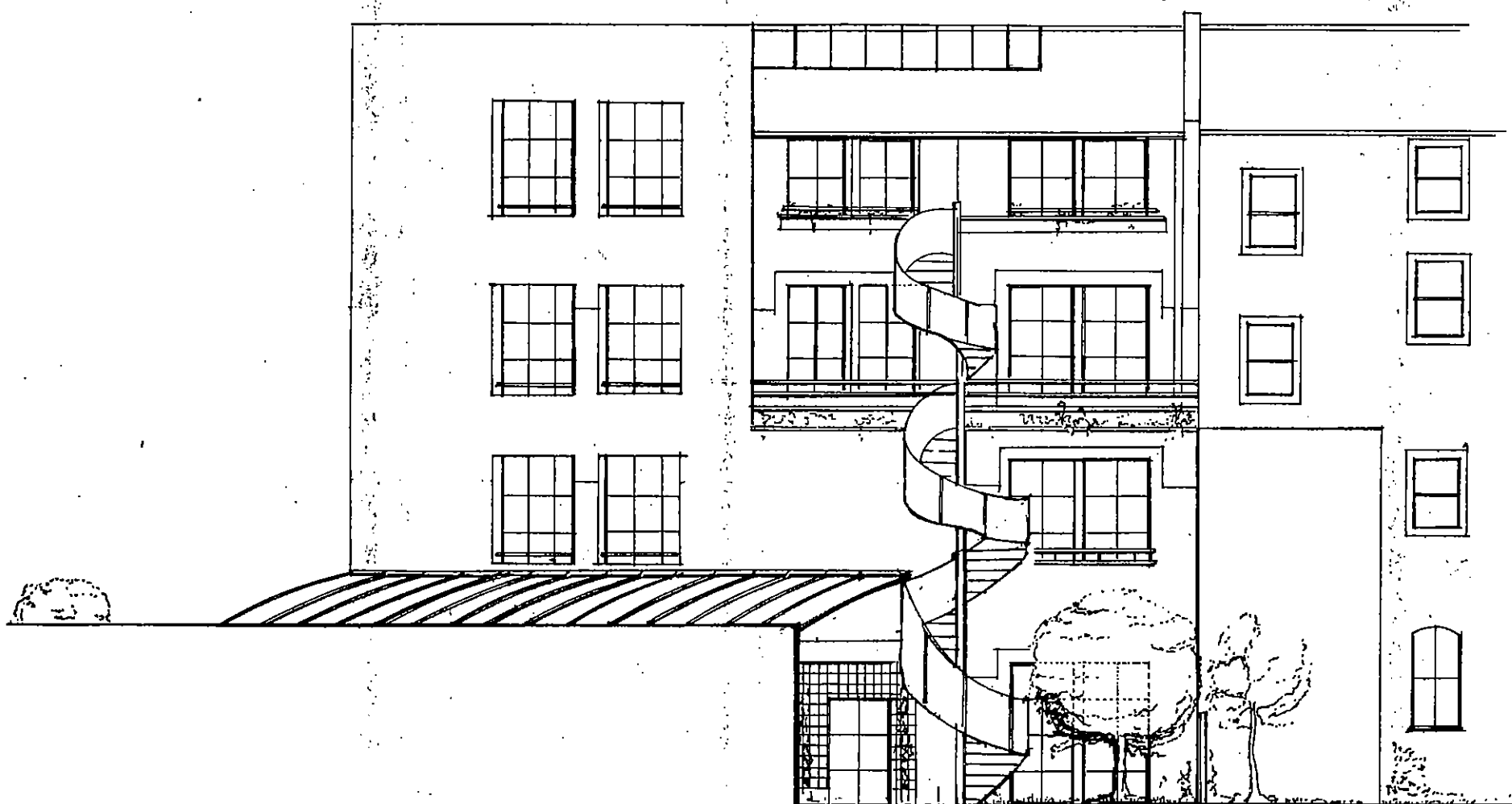
See 273.03-06 for plans
See 273.07,09 for other elevations

Scale

1:100
Date

2.5.89
Drawn by
me

Drwg No
273.08



TP 82.03307 R2

Case Copy
agreed
23/1/90

**Clements
& Porter
Architects**

58 Bloomsbury St
London WC1B 3QT
Tel: 01-255 3396
Fax: 01-255 1297

Do not scale from this drwg
This drawing is copyright

Project

NEW DEVELOPMENT AT 2-4 SANDALL ROAD
KENTISH TOWN LONDON NW5

Title

NORTH ELEVATION

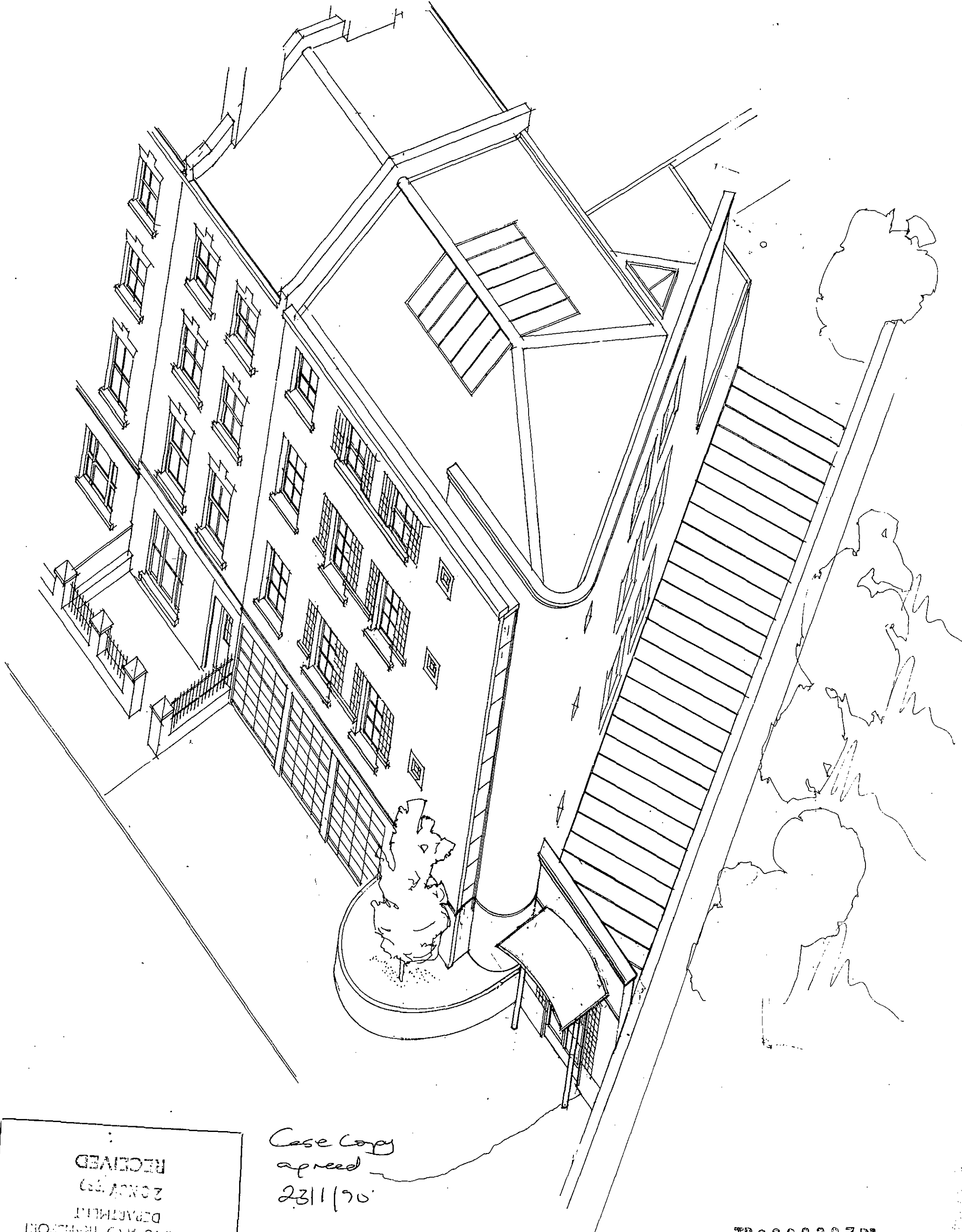
Notes

see 273.03-06 for plans
see 273.07,08 for other elevations

Scale

1:100
Date
2.5.89
Drawn by
me

Drwg No
273.09



Case Copy
agreed
23/1/90

TP8903307R1

LONDON BOROUGH OF CROYDON
PLANNING AND TRANSPORT
DEPARTMENT
20 NOV 1989
RECEIVED

Clements & Porter Architects 58 Bloomsbury St London WC1B 3QT Tel: 01-255 3396 Fax: 01-255 1297 Do not scale from this drwg This drawing is copyright	Project NEW DEVELOPMENT AT 2-4 SANDALL ROAD, KENTISH TOWN, LONDON NW5 Title AXONOMETRIC VIEW OF BUILDING	Notes	Scale 1:100 Date 9.10.89 Drawn by I.B.M. Drwg No 273.10
--	--	--------------	--