



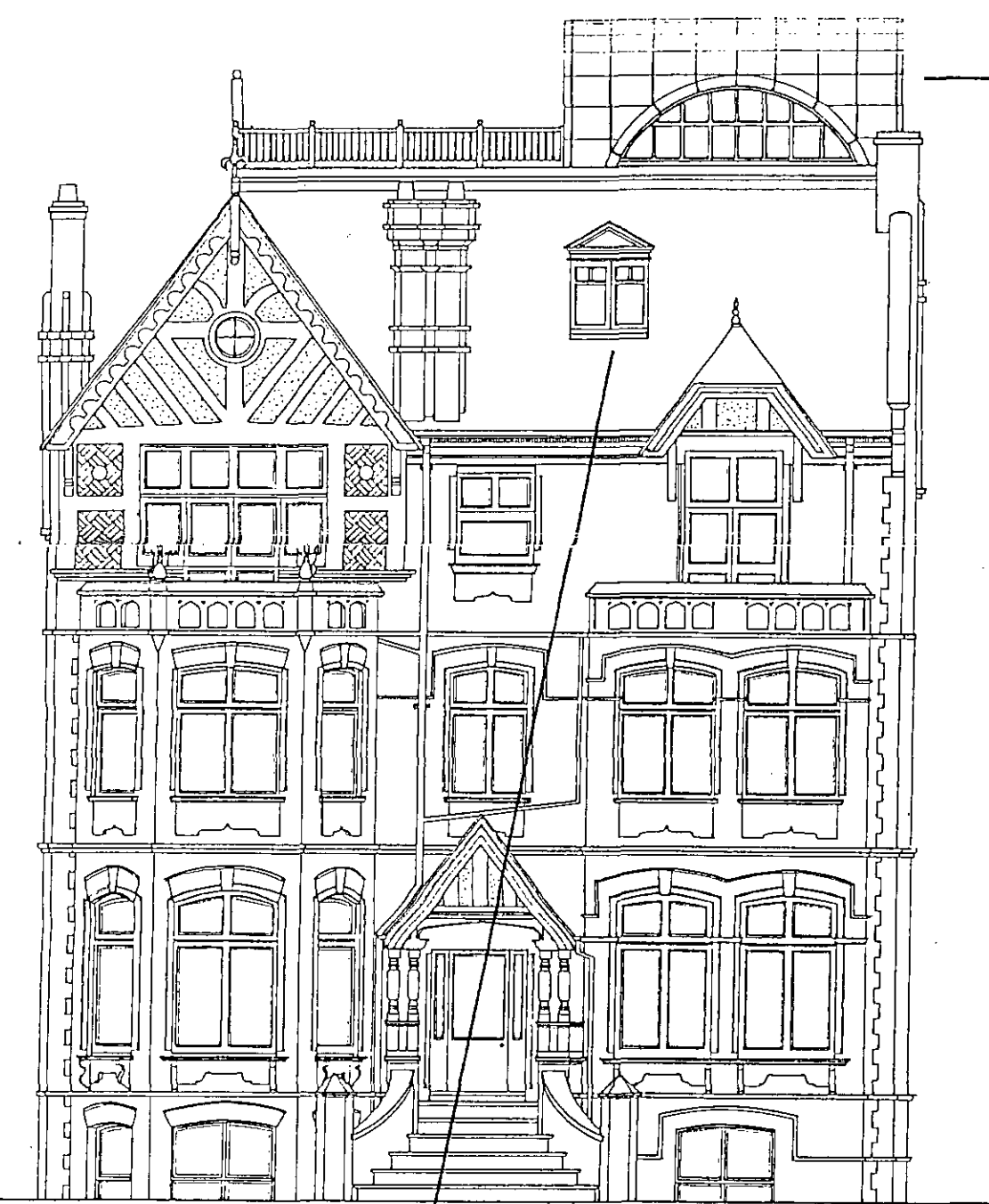
Examples of copper roof features on surrounding buildings.



PERSPECTIVE FROM STREET LEVEL - BEFORE

The building is an example of late Victorian developer housing in the 'Queen Anne' style, a style which was popular in the late 19th century as the fashionable style for the suburbs following the lead of architects such as Richard Norman Shaw. The chief characteristic of the style was to create a loosely related, rambling collection of forms quarried from various architectural styles. The surrounding buildings in the Strathray Gardens and Eton Avenue estate show a wide variety of different features from, amongst others, the Classical, Dutch, Gothic and Tudor styles. The goal was picturesque variety and the new roof extension to 4 Strathray Gardens has been designed as a further element of variety in an already varied visual scene. The surrounding buildings show a range of one-off and shared details with a particular strand of rooftop copper clad features which the new roof extension continues. This is set within a common context of white painted windows and gables and ornamental brickwork facades. All the new work to the existing buildings is carried out to match the existing detailing and seeks to continue the vocabulary of the house in a creative rather than imitative manner.

Barrel vault form reduces apparent bulk of new work when viewed from street level.



EAST ELEVATION (FRONT)

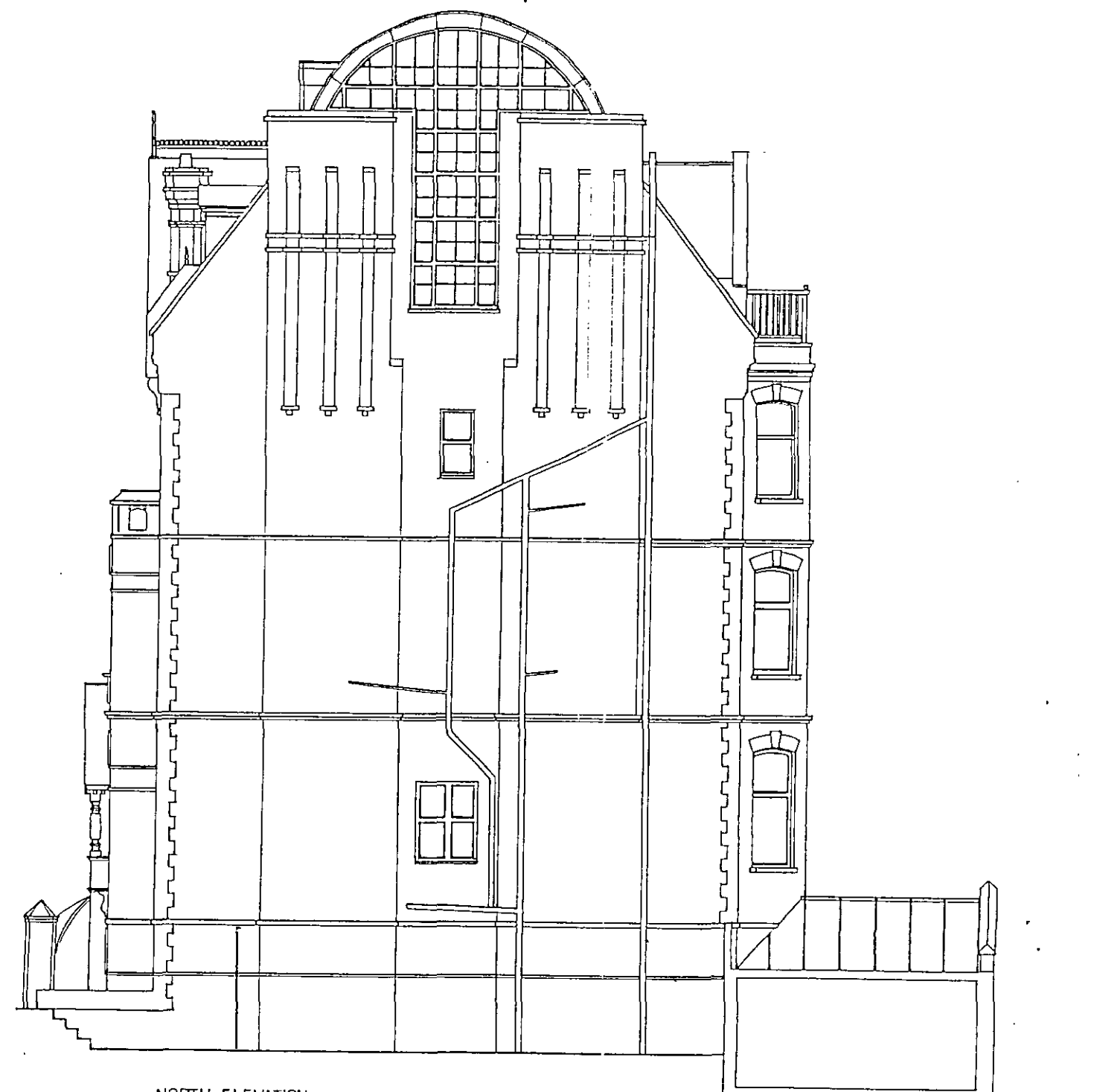


Example of typical 'Queen Anne' style detailing reinterpreted in the new roof construction.



PERSPECTIVE FROM STREET LEVEL - WITH ROOF EXTENSION.
NB - The barrel vault reduces the impact of the design from street level.

New dormer windows follow the model for the area.



NORTH ELEVATION

ENDPIECE.

The area is full of precedents for utilising the roof space of these houses. Unfortunately, most have been carried out in a crude and insensitive manner which does not reflect the character of the area. Some examples are shown here.



LONDON BOROUGH OF CAMDEN
TOWN AND COUNTRY PLANNING ACTS
13 OCT 1983
APPROVED
NOT APPROVED
BEHALF OF THE COUNCIL

TP 0884137

LONDON BOROUGH OF CAMDEN
 PLANNING AND TRANSPORT
 DEPARTMENT
 23 AUG 1988
 RECEIVED

Windows follow curve of roof

New bay window construction extends existing bay up one floor with extended dormer window over. All construction to match existing in materials and details.

New Dormer Window

New Window

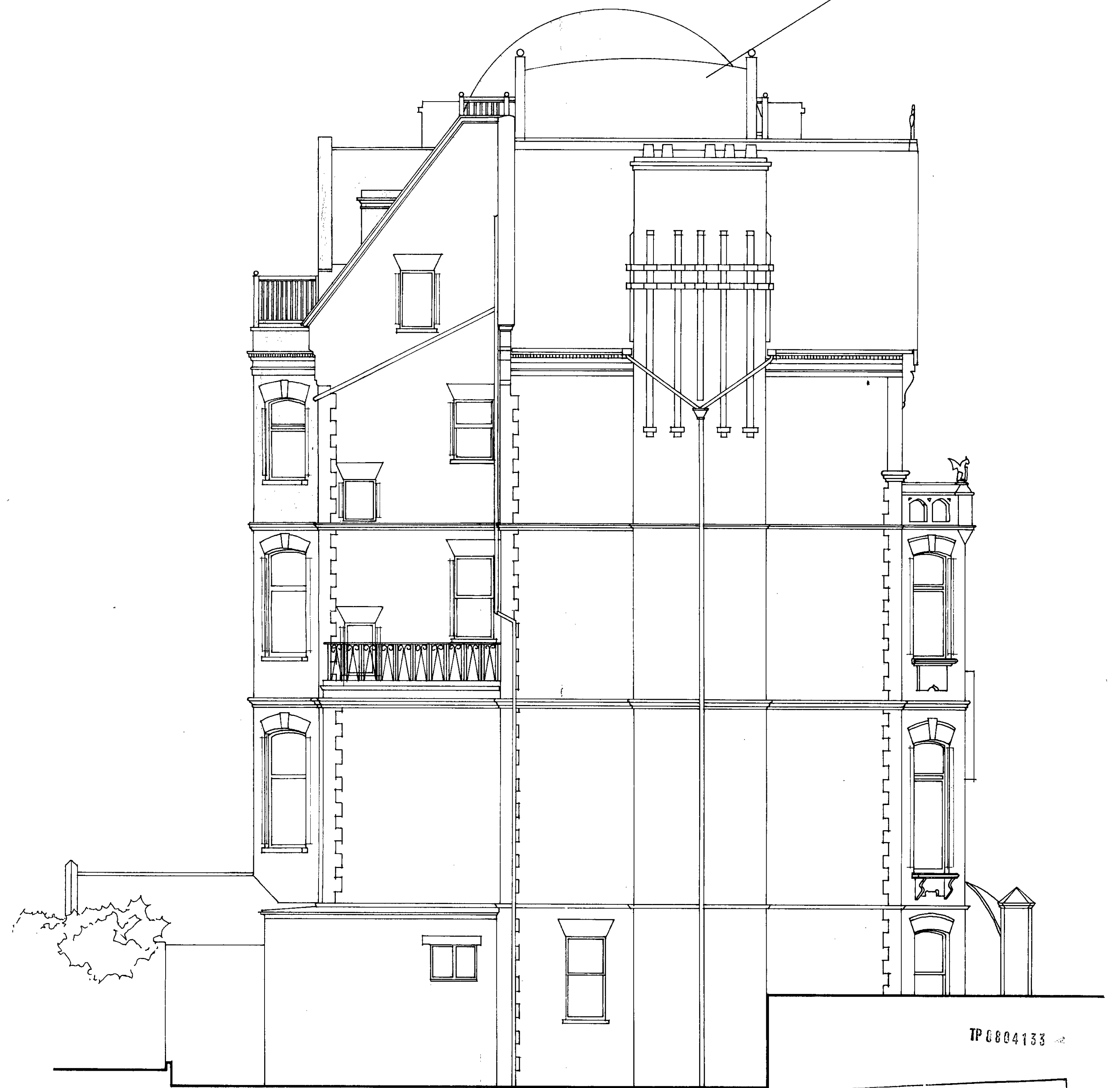
New French Windows

LONDON BOROUGH OF CAMDEN
 PLANNING AND TRANSPORT
 DEPARTMENT
 23 AUG 1988
 RECEIVED

Screen to Roof Terrace End to prevent overlooking to adjacent building.



WEST ELEVATION (REAR)



SOUTH ELEVATION

TP 0004133

CTP/ 8804133
 07/15/13

LONDON BOROUGH OF CAMDEN
 TOWN AND COUNTRY PLANNING ACTS
 13 OCT 1988
 APPROVED
 PLANS NOT APPROVED
 ON BEHALF OF THE COUNCIL

All new balustrading in white painted timber to 'Queen Anne' style pattern.

New circular window.

New French Windows

Copper clad barrel vault roof extension with white painted timber windows and balustrading to roof terrace.

New dormer window to match type on house opposite.

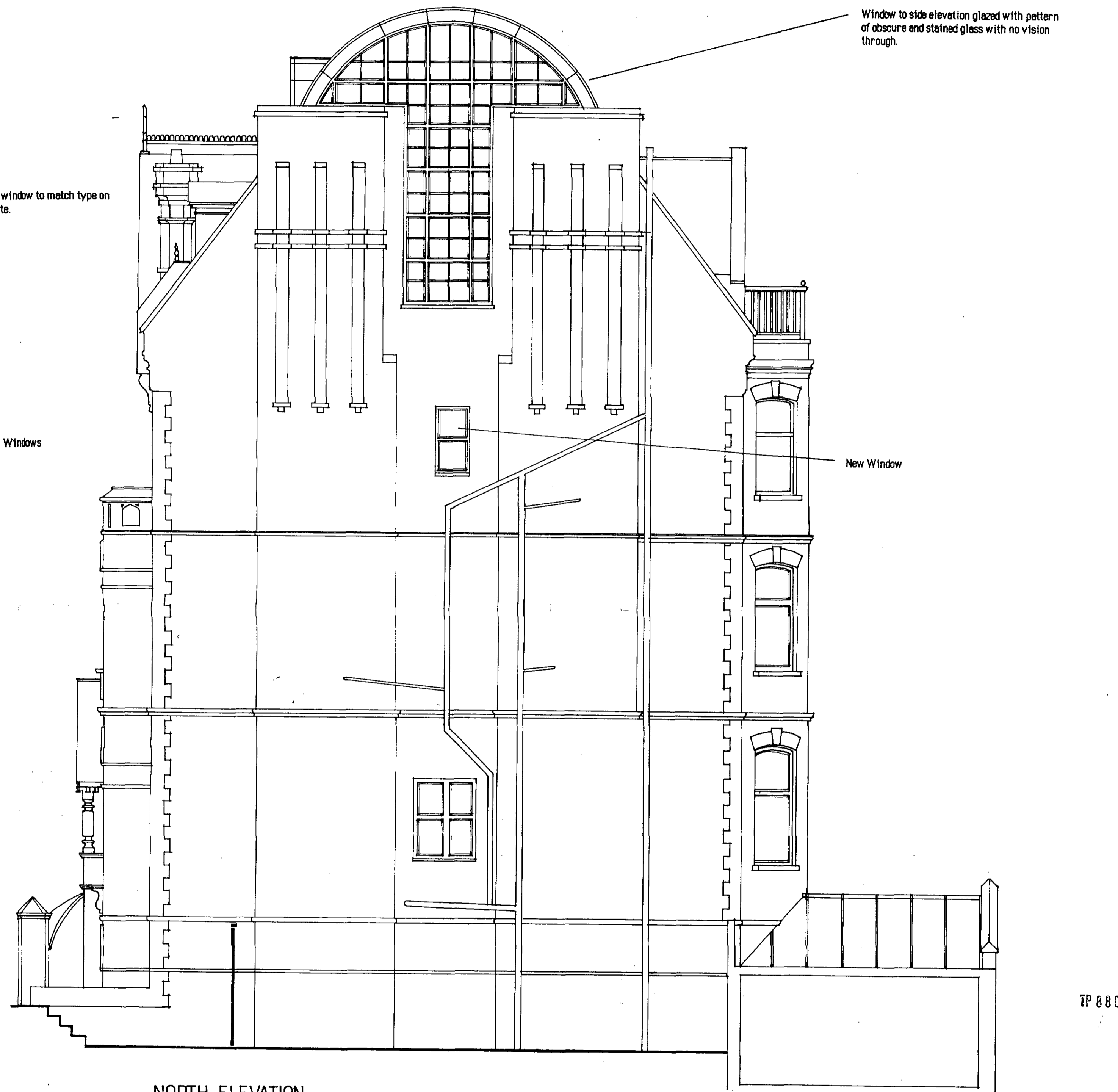
New French Windows

Window to side elevation glazed with pattern of obscure and stained glass with no vision through.

New Window



EAST ELEVATION (FRONT)

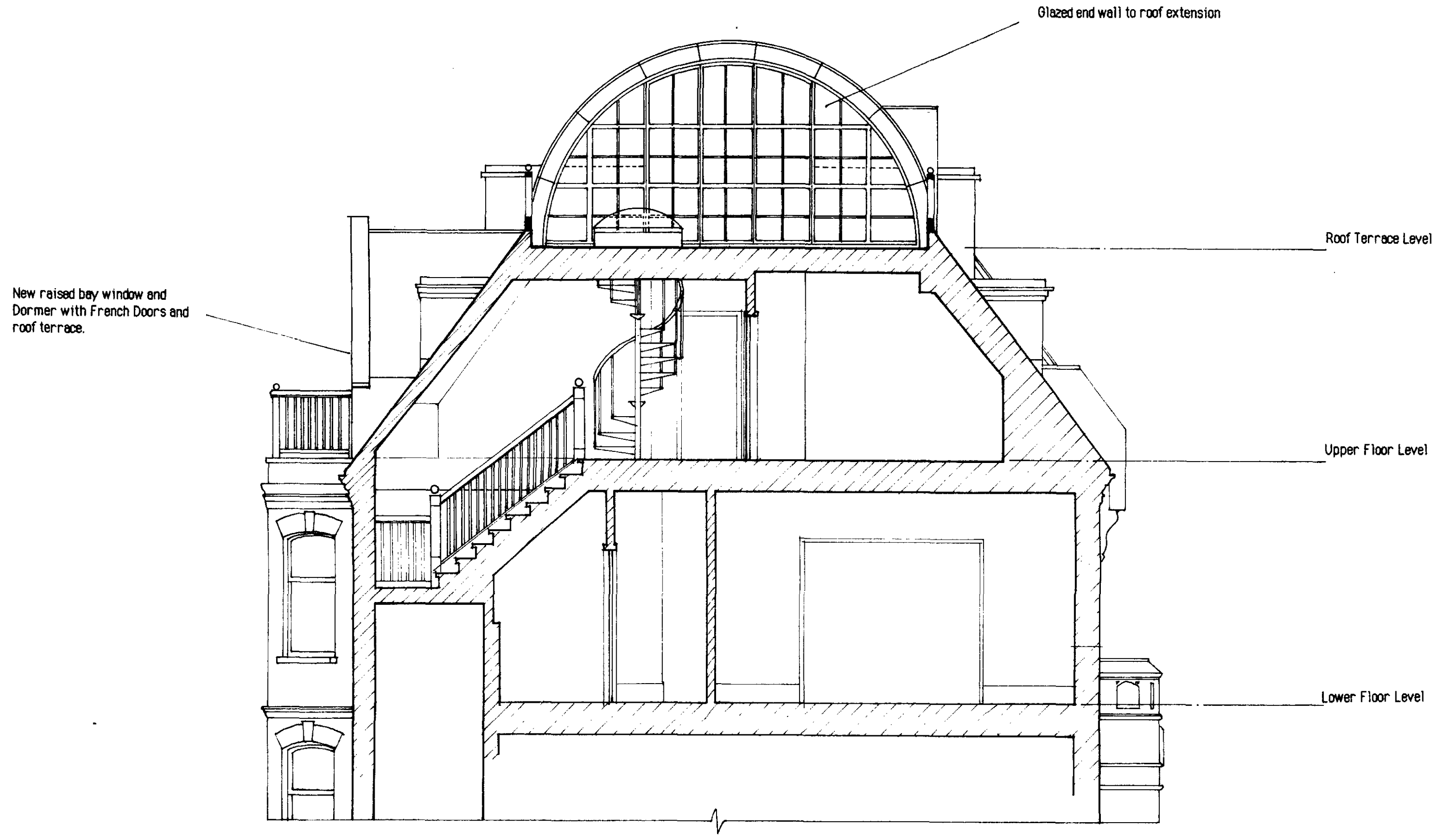


NORTH ELEVATION

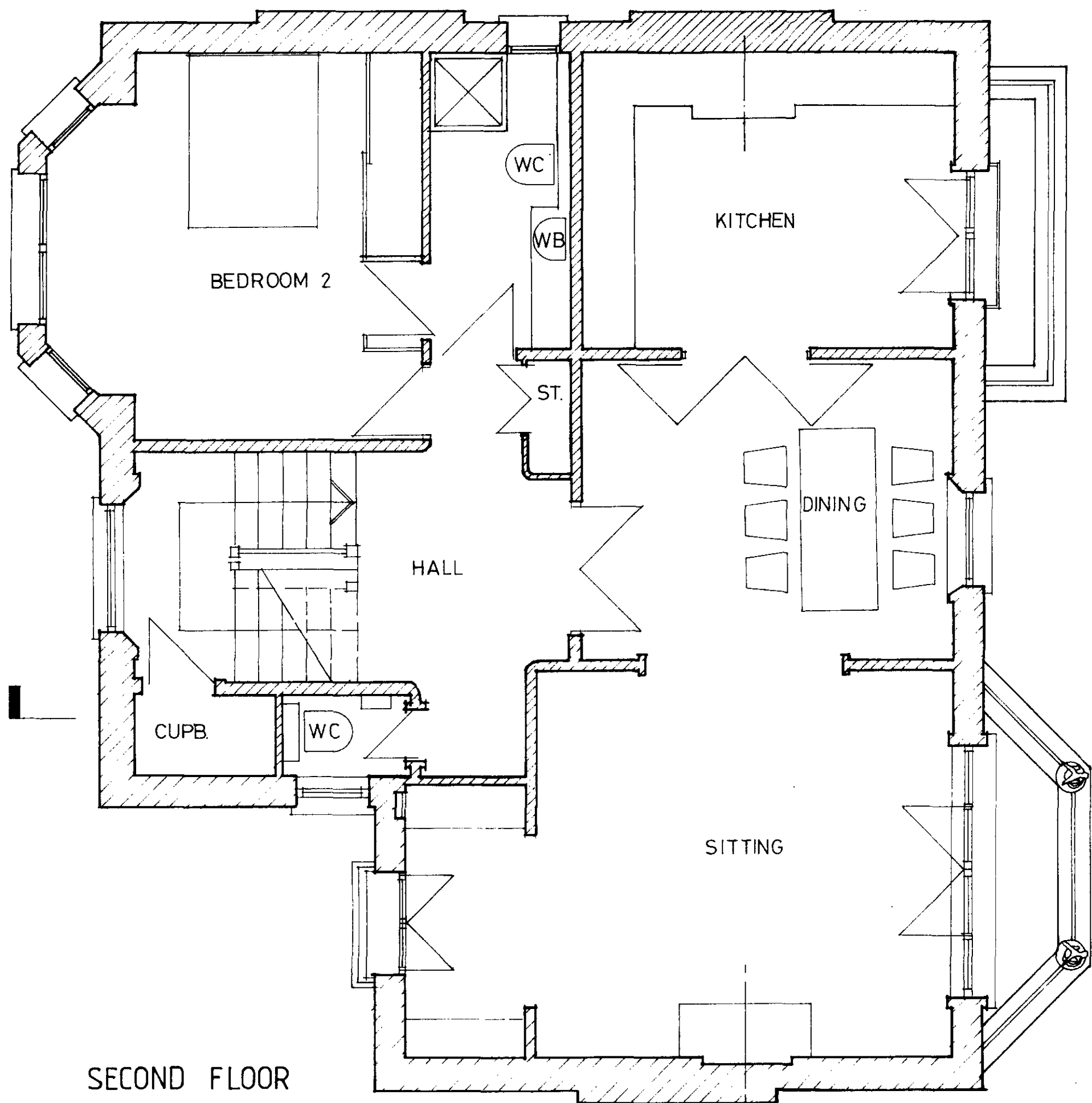
TP 8804133

CTP/ 8804133
97/15/13

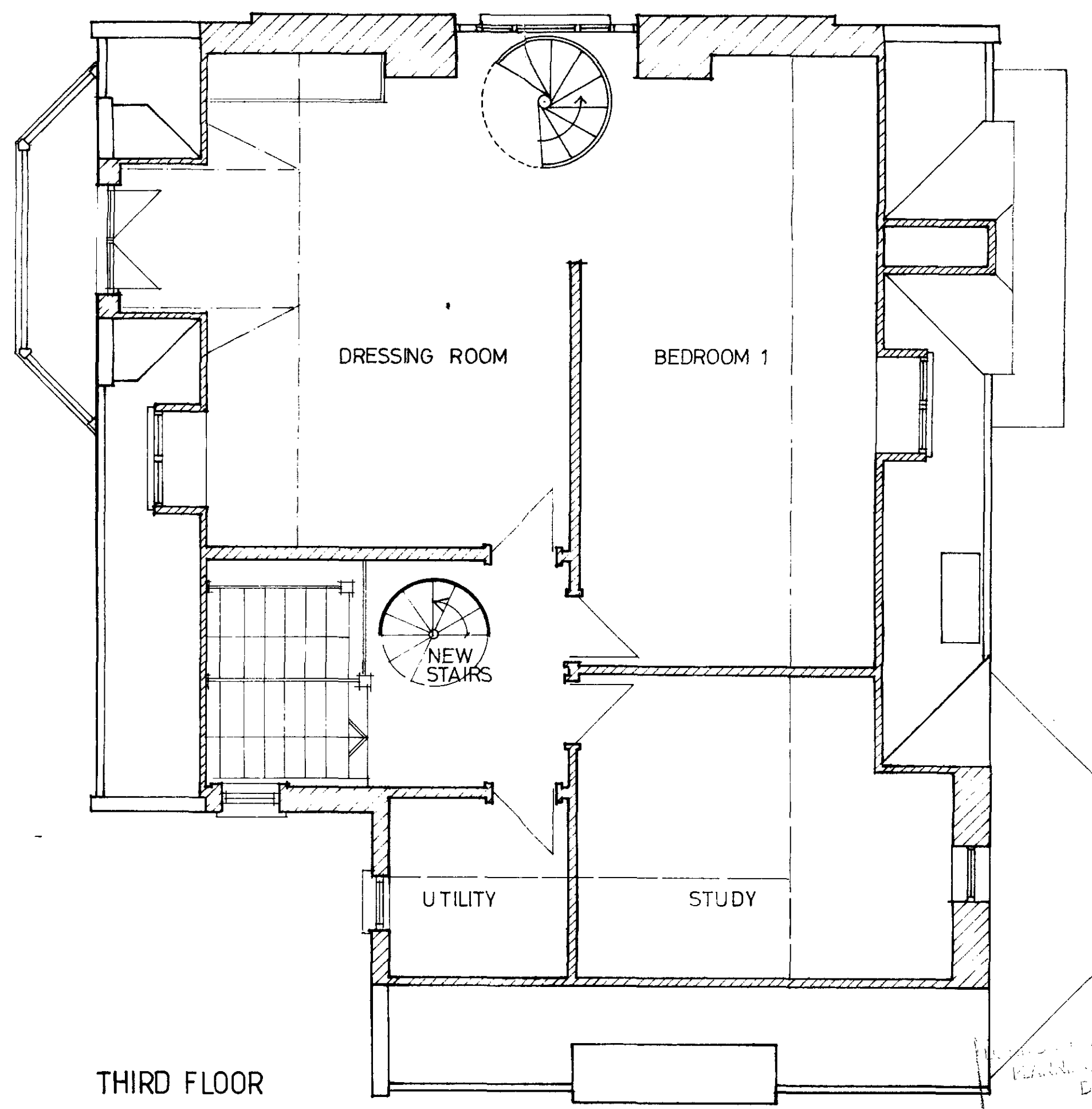
LONDON BOROUGH OF CAMDEN
PLANNING AND TRANSPORT
DEPARTMENT
28 JUN 1998
RECEIVED



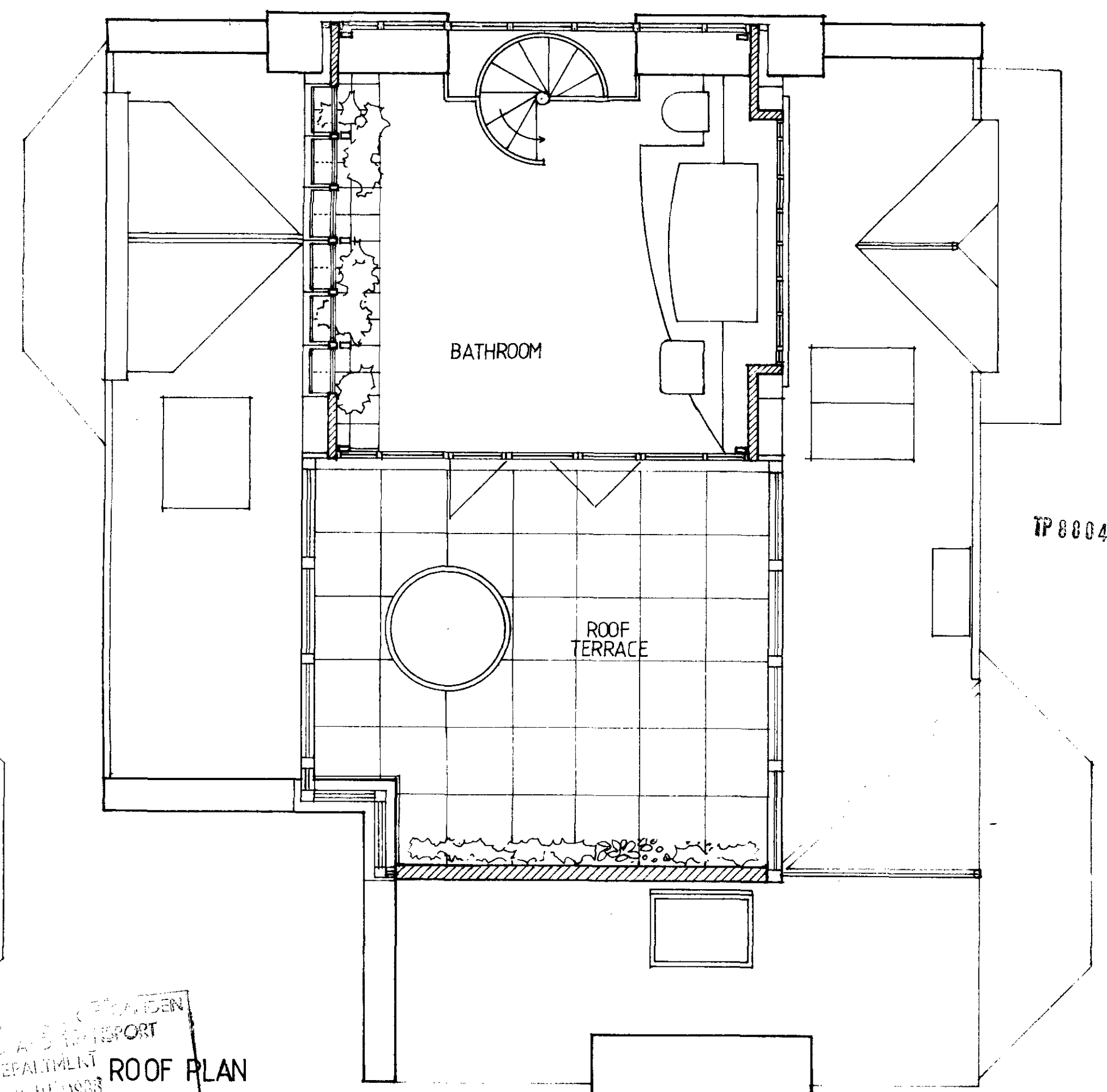
CROSS SECTION



SECOND FLOOR



THIRD FLOOR

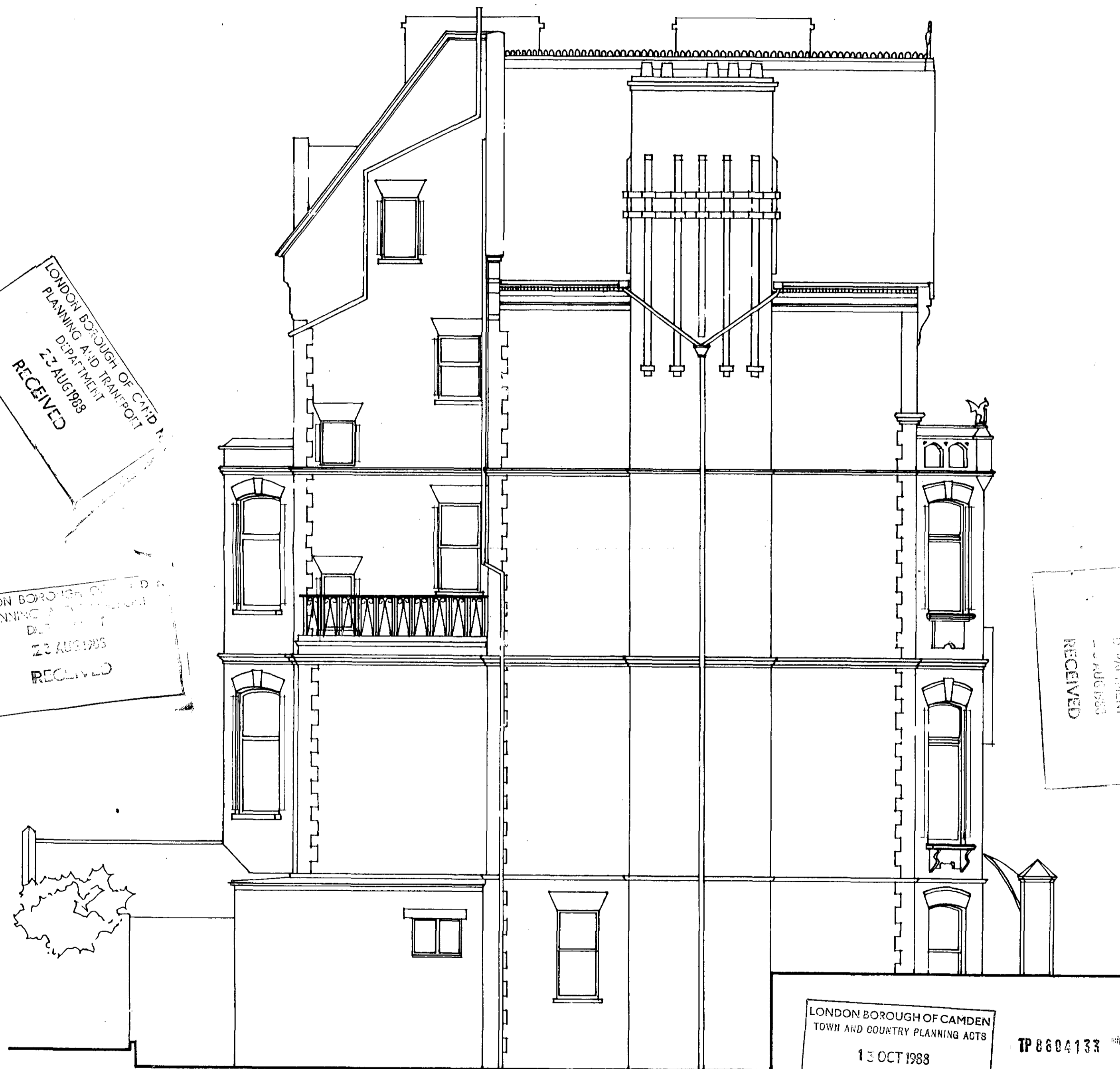


RECEIVED
 PLANNING & BUILDING DEPARTMENT
 28 JUN 1988
 ROOF PLAN

TP8804133



WEST ELEVATION



SOUTH ELEVATION

LONDON BOROUGH OF CAMDEN
PLANNING AND TRANSPORT
DEPARTMENT
22 AUG 1988
RECEIVED

LONDON BOROUGH OF CAMDEN
PLANNING AND TRANSPORT
DEPARTMENT
22 AUGUST
RECEIVED

LONDON BOROUGH OF CAMDEN
PLANNING AND TRANSPORT
DEPARTMENT
RECEIVED

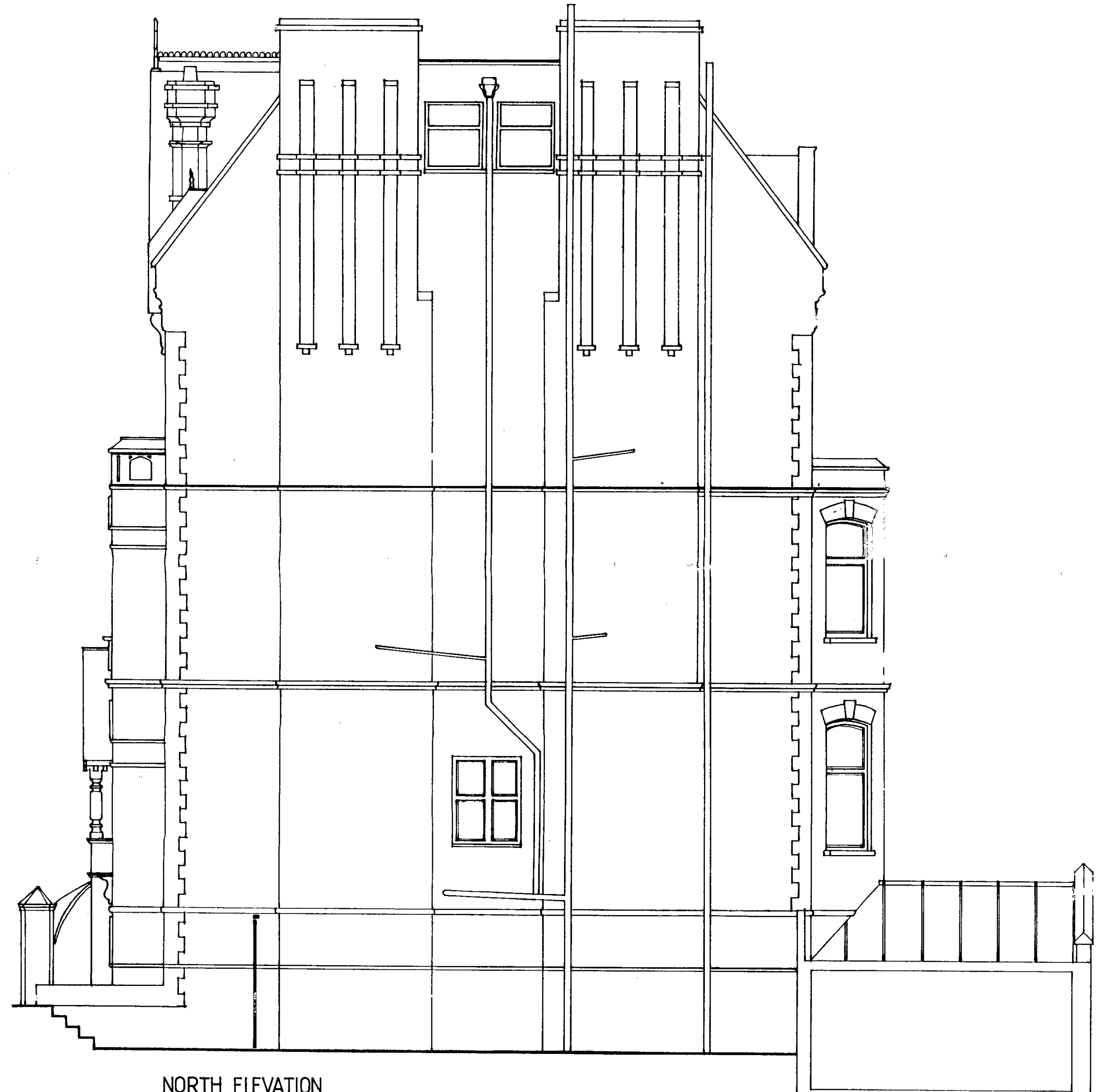
LONDON BOROUGH OF CAMDEN
TOWN AND COUNTRY PLANNING ACTS
13 OCT 1988
TP 8804133
PLANS APPROVED
NOT APPROVED
ON BEHALF OF THE COUNCIL

CTP/ 8804133
47/15/13

LONDON BOROUGH OF CAMDEN
PLANNING AND TRANSPORT
DEPARTMENT
28 JUN 1988
RECEIVED



EAST ELEVATION



NORTH ELEVATION

LONDON BOROUGH OF CAMDEN
TOWN AND COUNTRY PLANNING ACTS
13 OCT 1988
PLANS APPROVED
NOT APPROVED
ON BEHALF OF THE COUNCIL

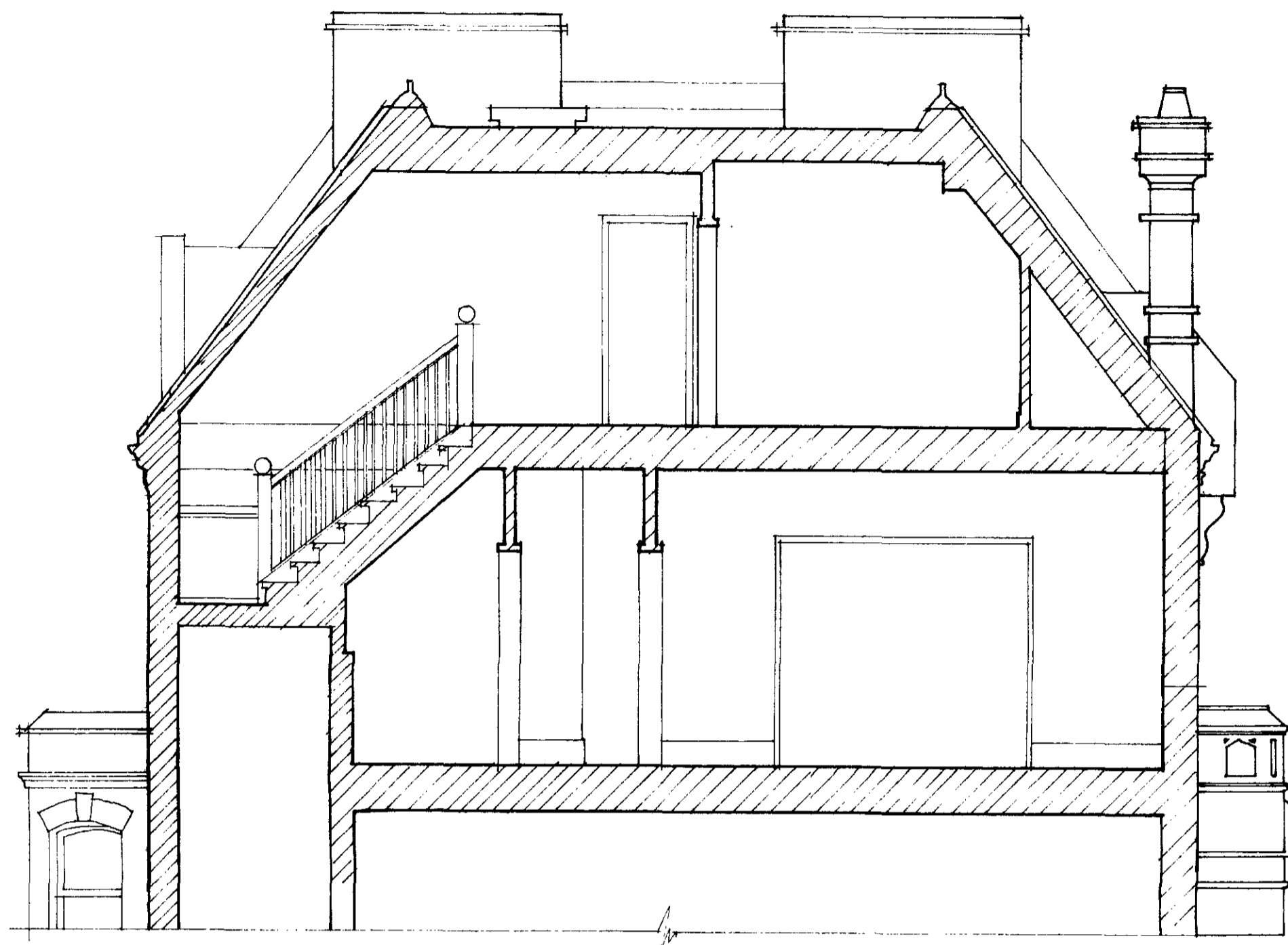
TP 8804133

CTP/ 8804133
97/15/13

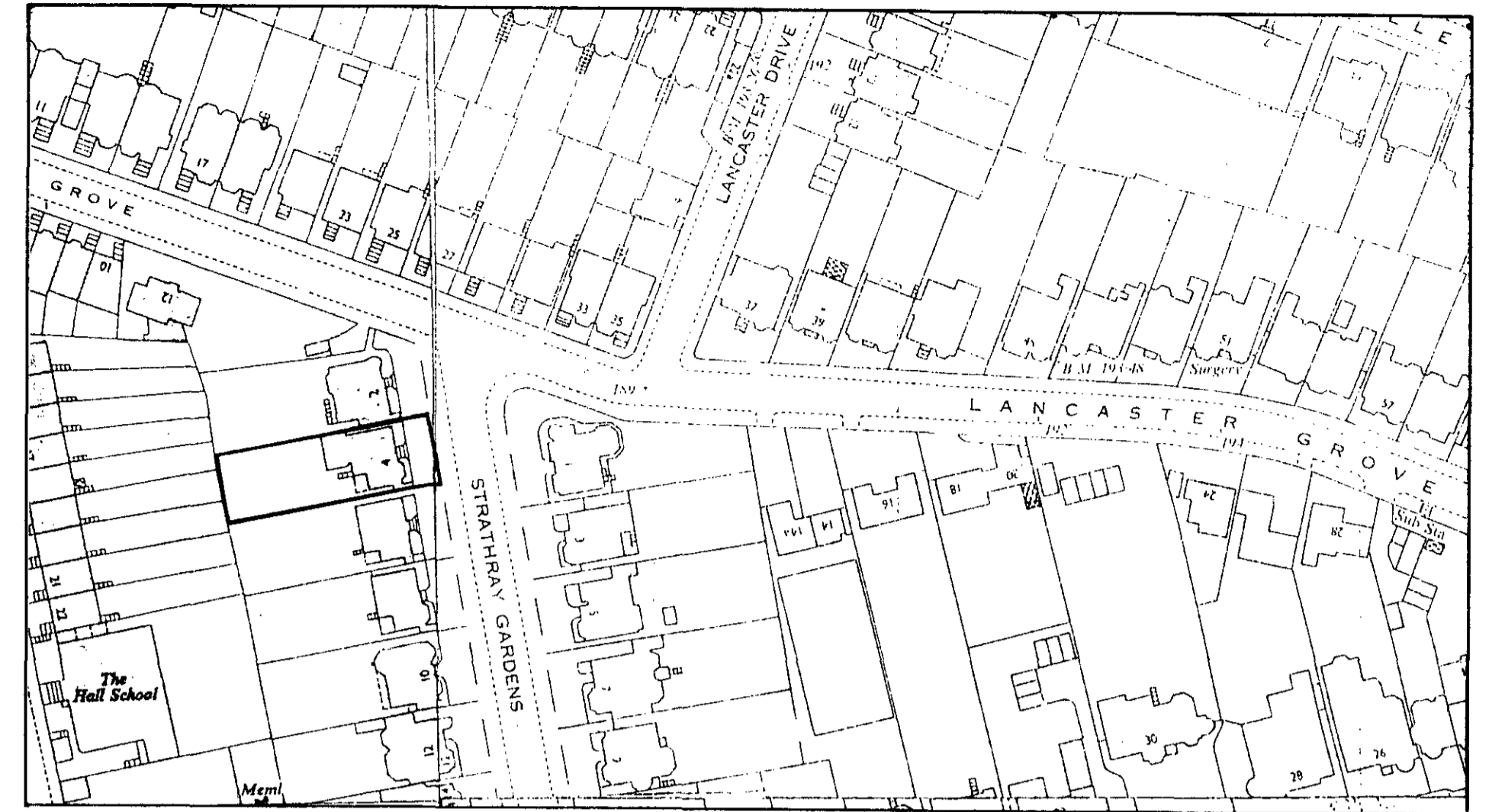
LONDON BOROUGH OF CAMDEN
PLANNING AND BUILDING
DEPARTMENT
23 AUG 1988
RECEIVED

LONDON BOROUGH OF CAMDEN
PLANNING AND BUILDING
DEPARTMENT
23 AUG 1988
RECEIVED

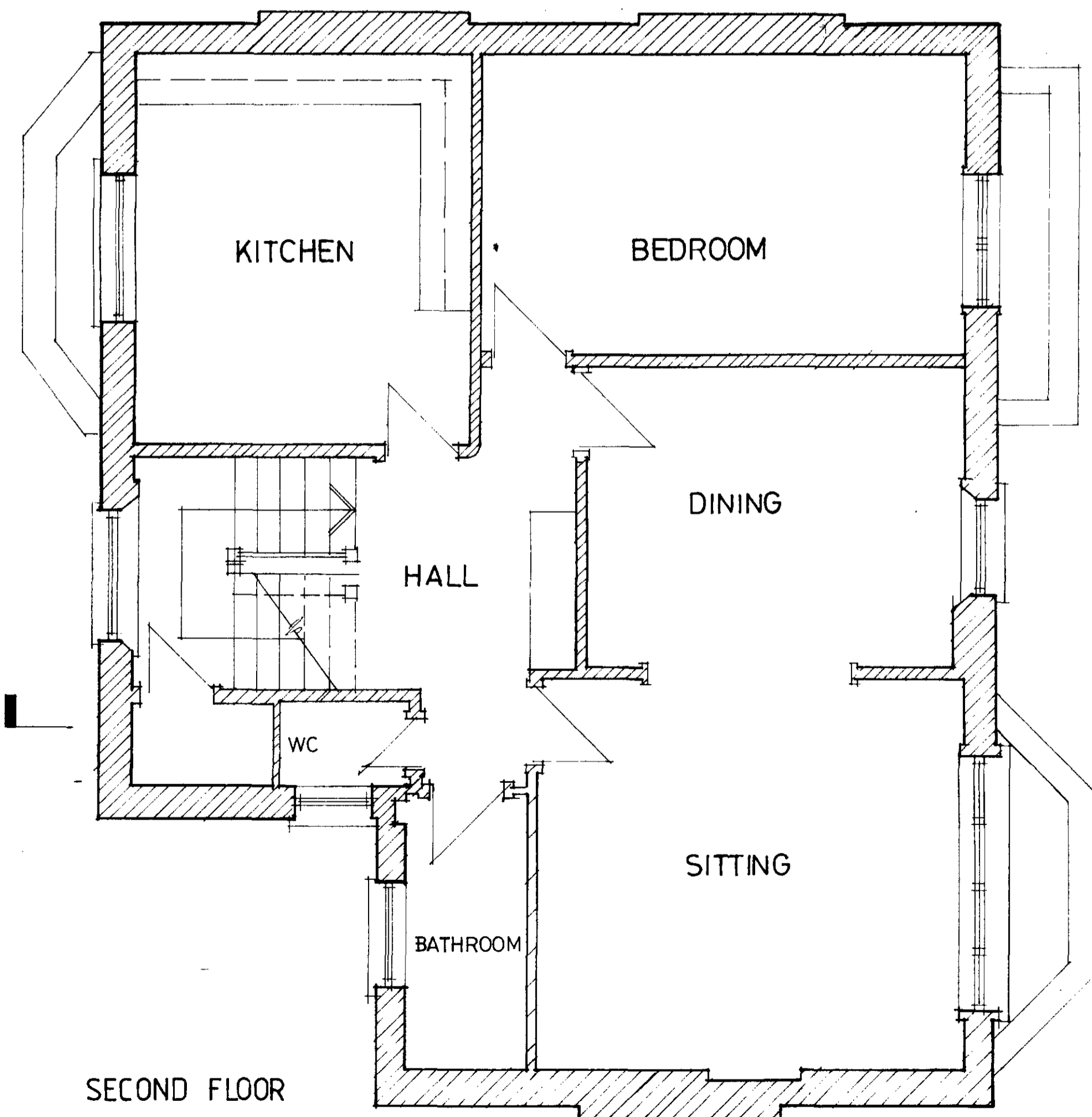
LONDON BOROUGH OF CAMDEN
PLANNING AND BUILDING
DEPARTMENT
23 JUN 1988
RECEIVED



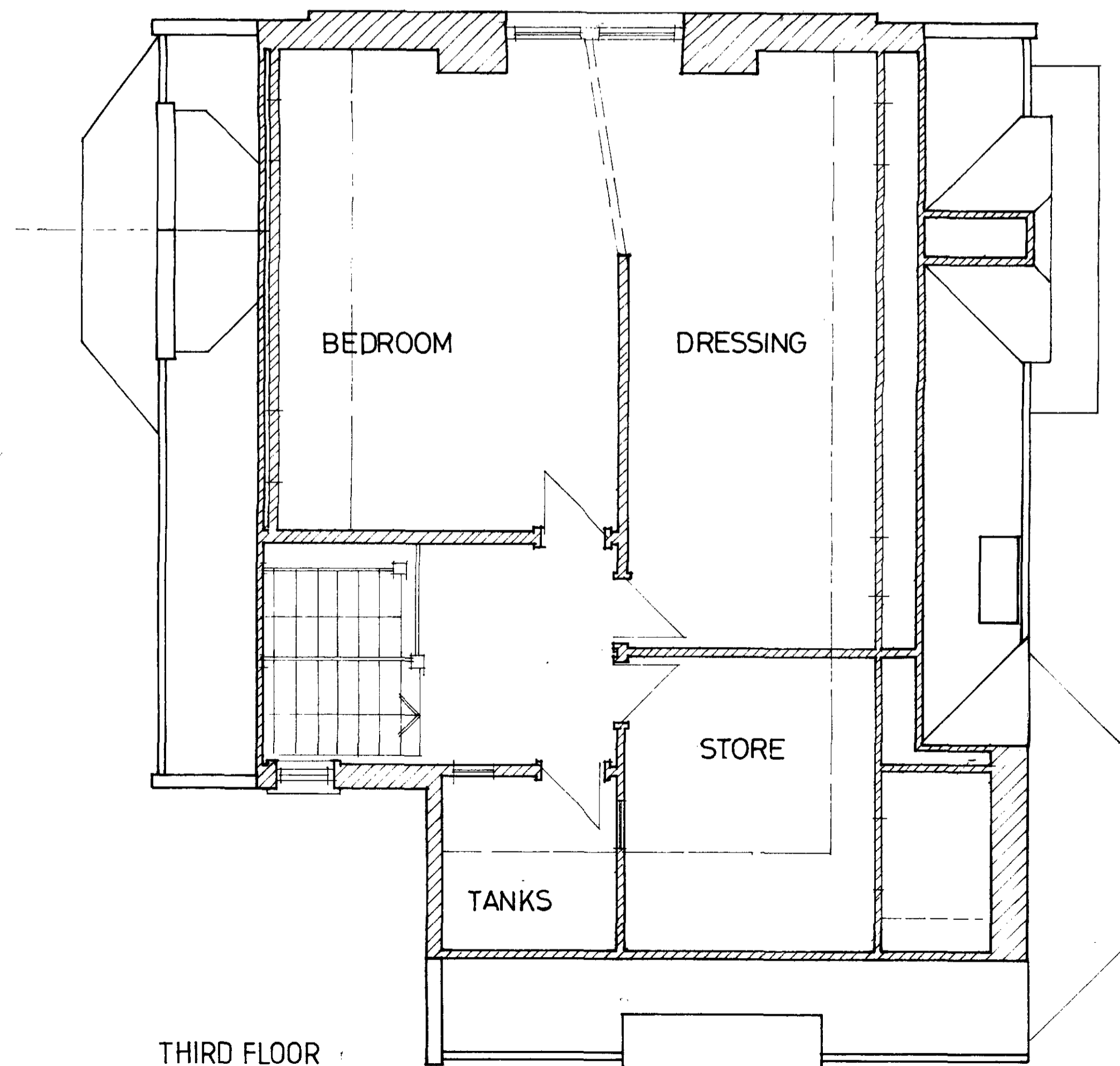
CROSS SECTION



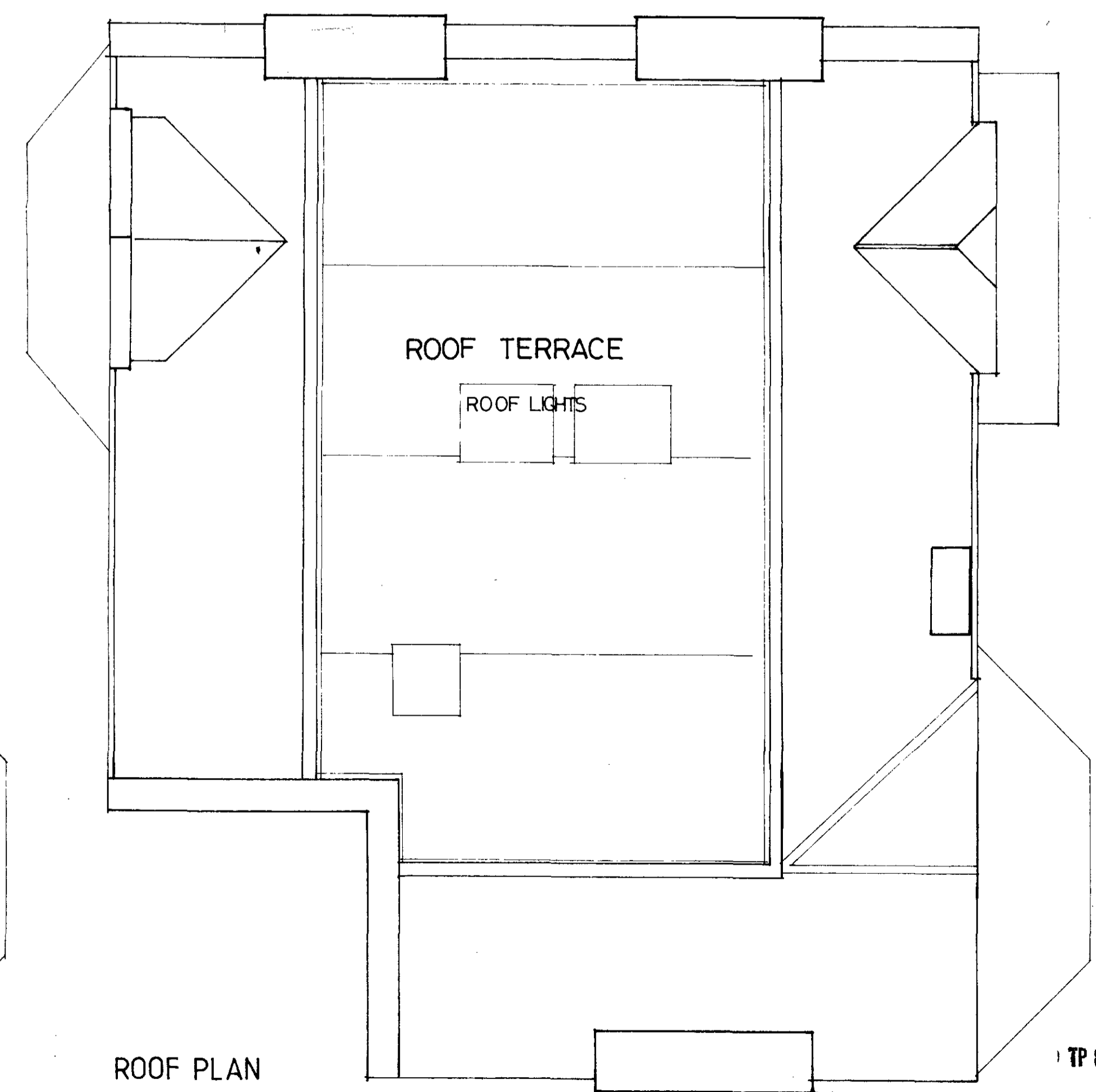
LOCATION PLAN 1:1250



SECOND FLOOR



THIRD FLOOR



ROOF PLAN

TP 8804133

BRADY + MALLALIEU ARCHITECTS
15, CHATTERTON ROAD, FINSBURY PARK, LONDON N4 2BA.
01-354-4359

LONDON BOROUGH OF CAMDEN
PLANNING AND TRANSPORT
DEPARTMENT
23 JUN 1988

RECEIVED

PLANS + SECTION
EXISTING 1:50

CTP/ 4804133
97/16/13
4 STRATHRAY GARDENS NW3 SG 001
APR 88