

SEE DRAWING 581/54 FOR 1/4" DETAILS OF RMS 1.7, 1.8 & 1.9.

SEE DRAWING 581/55 FOR 1/4" DETAILS OF RMS 1.5, 1.6 & 1.16.

LONDON BOROUGH OF CAMDEN
TOWN AND COUNTRY PLANNING ACTS
- 1 JUL 1987
PLANS APPROVED
ON BEHALF OF THE COUNCIL

HB 8/10094

LONDON BOROUGH OF CAMDEN
TOWN AND COUNTRY PLANNING ACTS
- 1 JUL 1987
PLANS APPROVED
ON BEHALF OF THE COUNCIL

Revision	Date	Description
NB CHECK ALL DIMENSIONS & REPORT ANY DISCREPANCIES TO ARCHITECT		
20, MARESFIELD GARDENS, LONDON, NW3.		
FIRST FLOOR PLAN AS PROPOSED		
Lionel Stirling 99 Ashmill Street London NW1 6RA 01-262 9041		
Date	Scale	Drawing Number
SEPT. 1983	1/4" = 1'0"	581/15



LONDON BOROUGH OF CAMDEN
 TOWN AND COUNTRY PLANNING ACTS
 RECEIVED
 ACK. REF. TO:

LONDON BOROUGH OF CAMDEN
 TOWN AND COUNTRY PLANNING ACTS
 - 1 JUL 1987
 PLANS ~~NOT APPROVED~~ APPROVED
 ON BEHALF OF THE COUNCIL
 HB 8770094 R1
 TP 8602480 R1

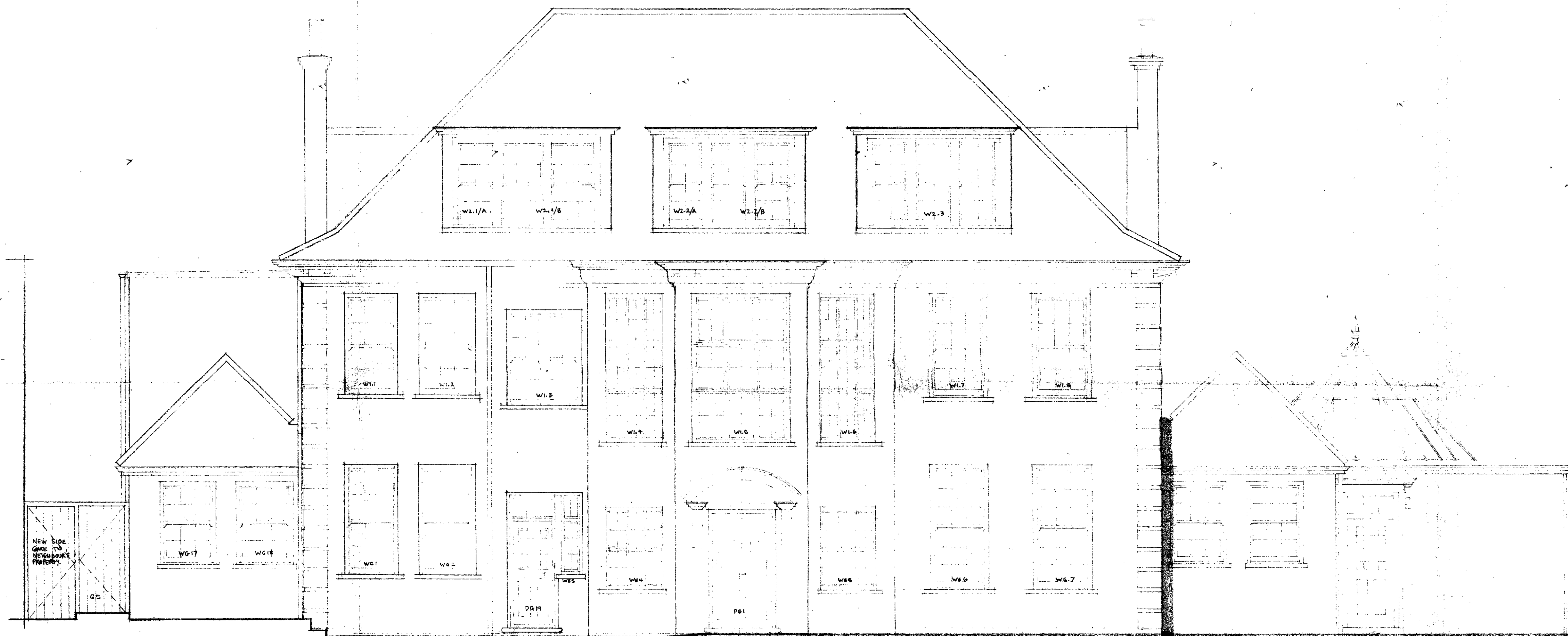
REV	DATE	DESCRIPTION	LETTER

NB CHECK ALL DIMENSIONS & REPORT ANY DISCREPANCIES TO ARCHITECT

20 MARESFIELD GARDENS, NW3.
 BACK ELEVATION
 AS PROPOSED.

Lionel Stirgess MCB BARCH. & PODU RIBA Chartered Architect
 99 Ashmill Street London NW1 6RA 01-262 9041

Date: JULY 84 Scale: 1/4" = 1'0" Drawing Number: 581/3 Rev'n: A



FRONT ELEVATION

LONDON BOROUGH OF CAMDEN
 PLANNING AND CONSERVATION
 DEPARTMENT
 - SPARKHOLM (A.M.)
 RECEIVED
 1987 JUL 10

HB 8770094

LONDON BOROUGH OF CAMDEN
 TOWN AND COUNTRY PLANNING ACTS
 - 1 JUL 1987
 PLANS APPROVED
 NOT APPROVED
 ON BEHALF OF THE COUNCIL

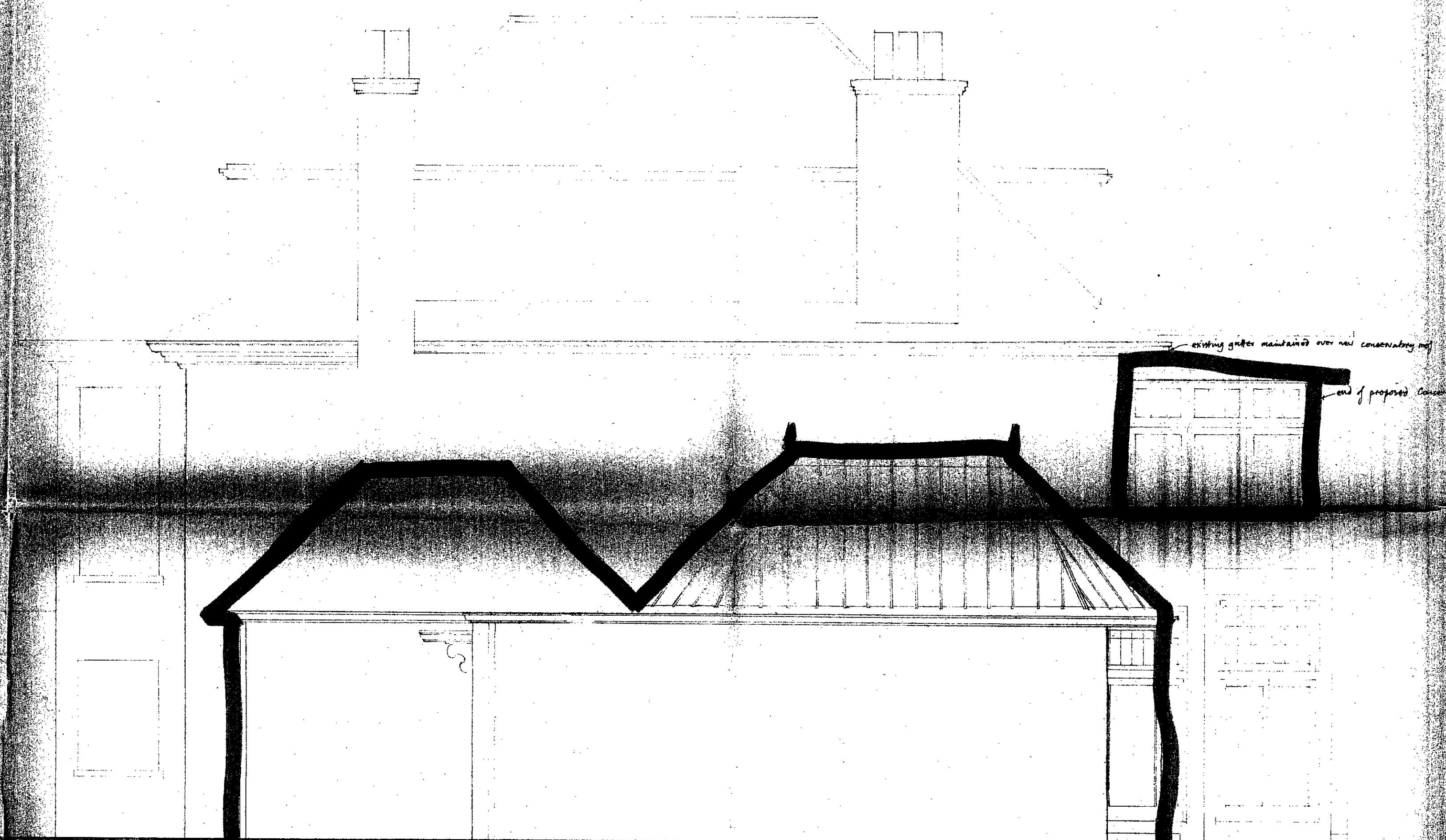
Revision Date	Description	Letter

NB. CHECK ALL DIMENSIONS & REPORT ANY DISCREPANCIES TO ARCHITECT

20, MARESFIELD GARDENS,
 LONDON NW3
 FRONT ELEVATION
 AS PROPOSED

Lionel Stiggess
 99 Ashmill Street London NW1 6RA 01-262 9041

Date	Scale	Drawing Number	Rev'n
NOV 1983	1/4" to 1'0"	581/12	



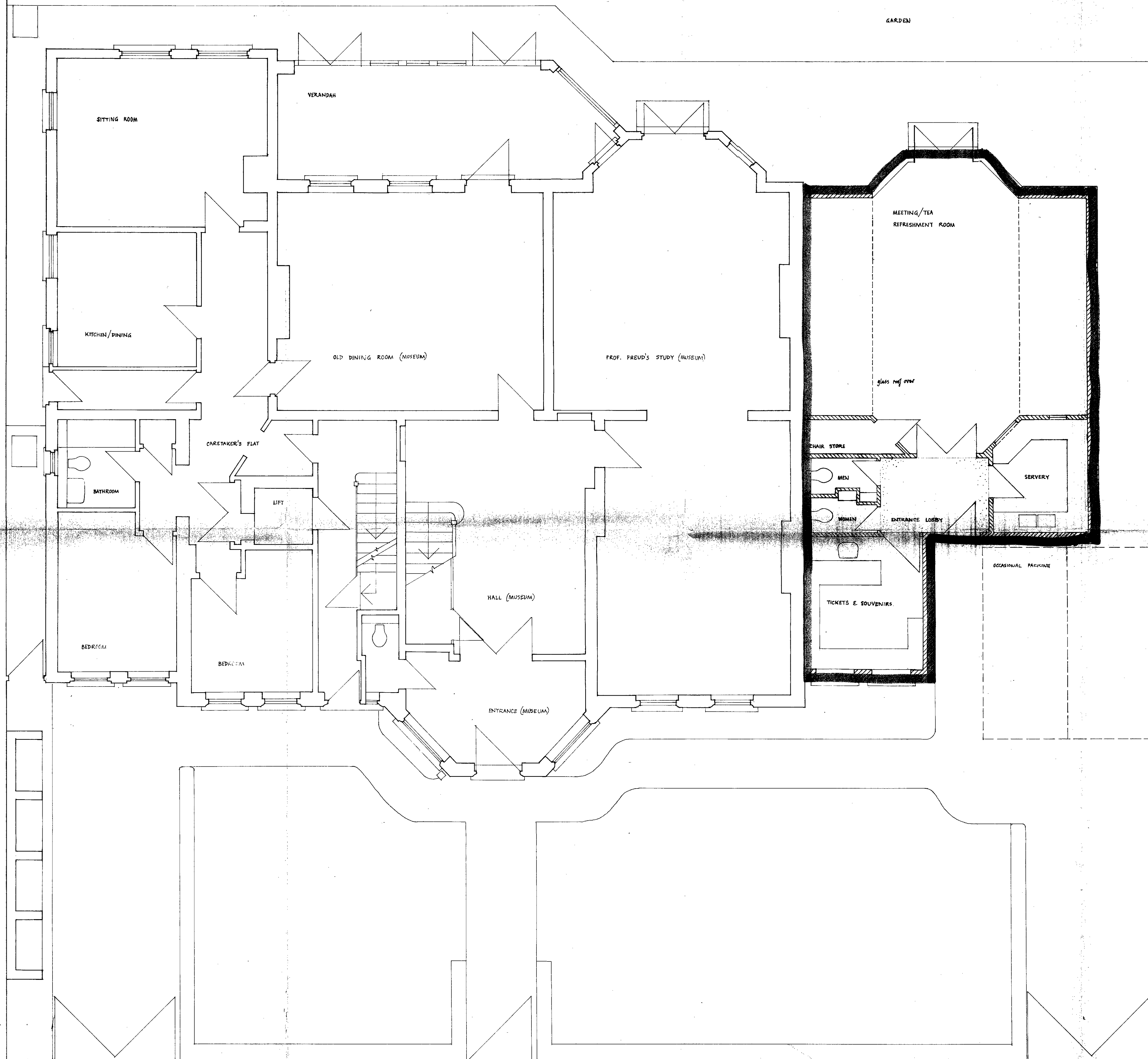
proposed Side Extension

LONDON BOROUGH OF CAMDEN
 PLANNING AND DEVELOPMENT
 14th JULY (A.M.)
 RECEIVED
 ACK. REF. TO:

LONDON BOROUGH OF CAMDEN
 TOWN AND COUNTRY PLANNING ACTS
 - 1 JUL 1987
 PLANS ~~NOT APPROVED~~ APPROVED
 ON BEHALF OF THE COUNCIL

HB 8770094 R1
 TP 8602480 R1

NO.	DATE	REVISIONS	CONSERVATORY ROOF CHANGES & LAYOUT	A
NB. CHECK ALL DIMENSIONS & REPORT ANY DISCREPANCIES TO ARCHITECT				
20 MAREFIELD GARDENS, LONDON NW3				
PROPOSED EXTENSION				
SIDE ELEVATION				
Lionel Stirgess AND PARTNERS ARCHITECTS				
99 Ashmill Street London NW1 6RA 01-261 9041				
Date	Scale	Drawing Number	Rev'n	
OCT '86	1/2" = 10'	581 / 300	A	



LONDON BOROUGH OF CAMDEN
 PLANNING AND COMMUNICATIONS
 DEPARTMENT
 - SHAW (A.M.)
 RECEIVED
 REF. TO:
 ACK.

LONDON BOROUGH OF CAMDEN
 TOWN AND COUNTRY PLANNING ACTS
 - 1 JUL 1987
 PLANS ~~NOT APPROVED~~ APPROVED
 ON BEHALF OF THE COUNCIL

1RB 8770094

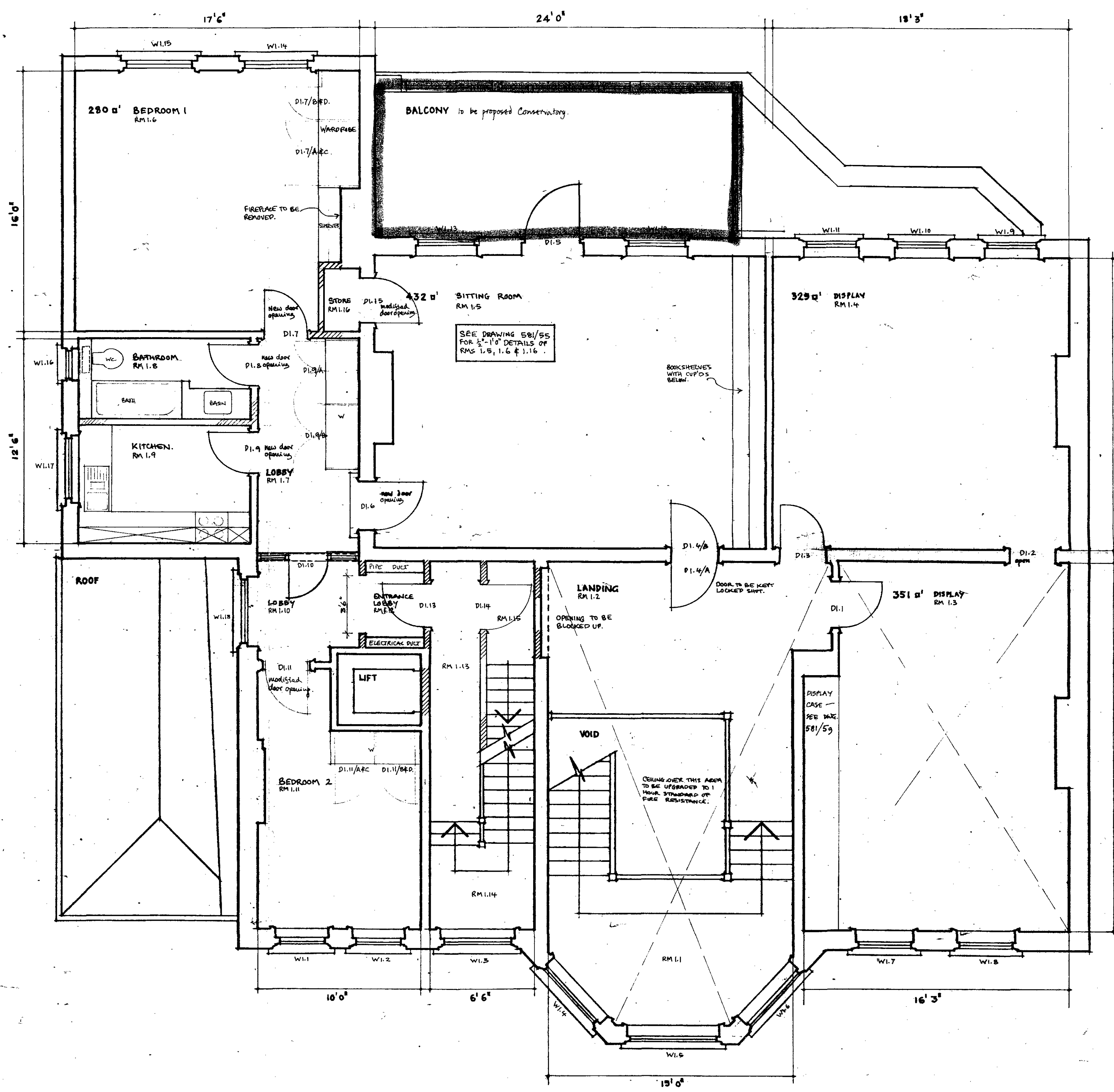
Revision Date	Description	Letter

NB CHECK ALL DIMENSIONS & REPORT ANY DISCREPANCIES TO ARCHITECT

20, MARESFIELD GARDENS, LONDON, NW3
 NEW EXTENSION
 PLAN

Lionel Stirkess
 99 Ashmill Street London NW1 6RA 01-262 9041

Date	Scale	Drawing Number	Rev'n
SEPT '86	1/4" = 1'0"	561 / 301	



SEE DRAWING 581/54 FOR 1/2" DETAILS OF RMs 1.7, 1.8 & 1.9.

SEE DRAWING 581/55 FOR 1/2" DETAILS OF RMs 1.5, 1.6 & 1.16.

LONDON BOROUGH OF CAMDEN
 TOWN AND COUNTRY PLANNING ACTS
 - 1 JUL 1987
 PLANS APPROVED
 ON BEHALF OF THE COUNCIL

HB 8/10094

LONDON BOROUGH OF CAMDEN
 TOWN AND COUNTRY PLANNING ACTS
 - 1 JUL 1987
 PLANS APPROVED
 ON BEHALF OF THE COUNCIL

Revision Date	Description

NOTE: CHECK ALL DIMENSIONS & REPORT ANY DISCREPANCIES TO ARCHITECT

20, MARESFIELD GARDENS, LONDON, NW3.

FIRST FLOOR PLAN
 AS PROPOSED

Lionel Stirling
 99 Ashmill Street, London NW1 6RA 01-262 9041

Date: SEPT. 1983 Scale: 1/4" = 1'0" Drawing Number: 581/15



LONDON BOROUGH OF CAMDEN
 TOWN AND COUNTRY PLANNING ACTS
 RECEIVED
 ACK. REF. TO:

LONDON BOROUGH OF CAMDEN
 TOWN AND COUNTRY PLANNING ACTS
 - 1 JUL 1987
 PLANS ~~NOT APPROVED~~ APPROVED
 ON BEHALF OF THE COUNCIL
 HB 8770094 R1
 TP 8602480 R1

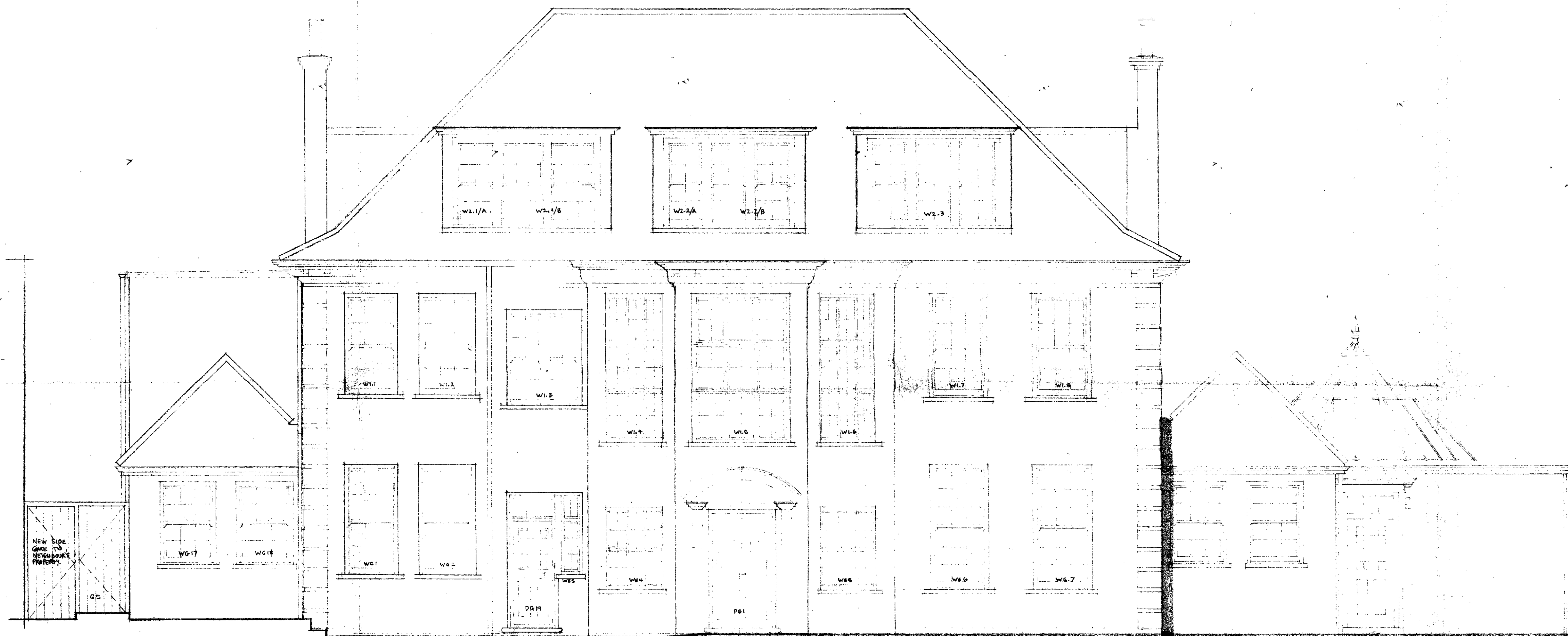
REV	DATE	DESCRIPTION	LETTER

NB CHECK ALL DIMENSIONS & REPORT ANY DISCREPANCIES TO ARCHITECT

20 MARESFIELD GARDENS, NW3.
 BACK ELEVATION
 AS PROPOSED.

Lionel Stirgess MCB ARCHT & PLANNING CONSULTANTS
 99 Ashmill Street London NW1 6RA 01-262 9041

Date: JULY 84 Scale: 1/4" = 1'0" Drawing Number: 581/3 Rev'n: A



FRONT ELEVATION

LONDON BOROUGH OF CAMDEN
 PLANNING AND CONSERVATION
 DEPARTMENT
 - SPARKHOLM (A.M.)
 RECEIVED
 1987 JUL 10

HB 8770094

LONDON BOROUGH OF CAMDEN
 TOWN AND COUNTRY PLANNING ACTS
 - 1 JUL 1987
 PLANS APPROVED
 NOT APPROVED
 ON BEHALF OF THE COUNCIL

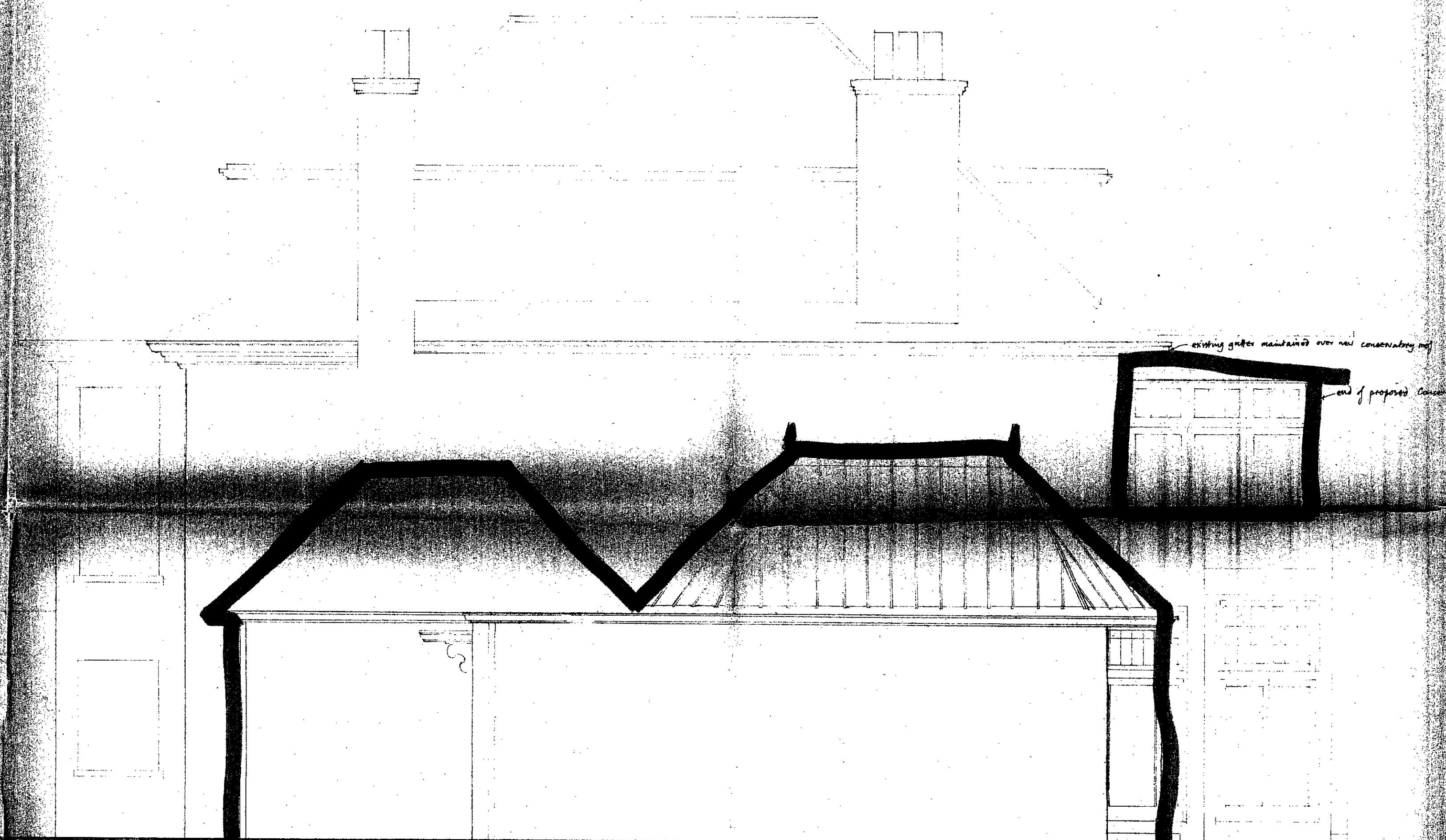
Revision Date	Description	Letter

NB. CHECK ALL DIMENSIONS & REPORT ANY DISCREPANCIES TO ARCHITECT

20, MARESFIELD GARDENS,
 LONDON NW3
 FRONT ELEVATION
 AS PROPOSED

Lionel Stiggess
 99 Ashmill Street London NW1 6RA 01-2629041

Date	Scale	Drawing Number	Rev'n
NOV 1983	1/4" to 1'0"	581/12	



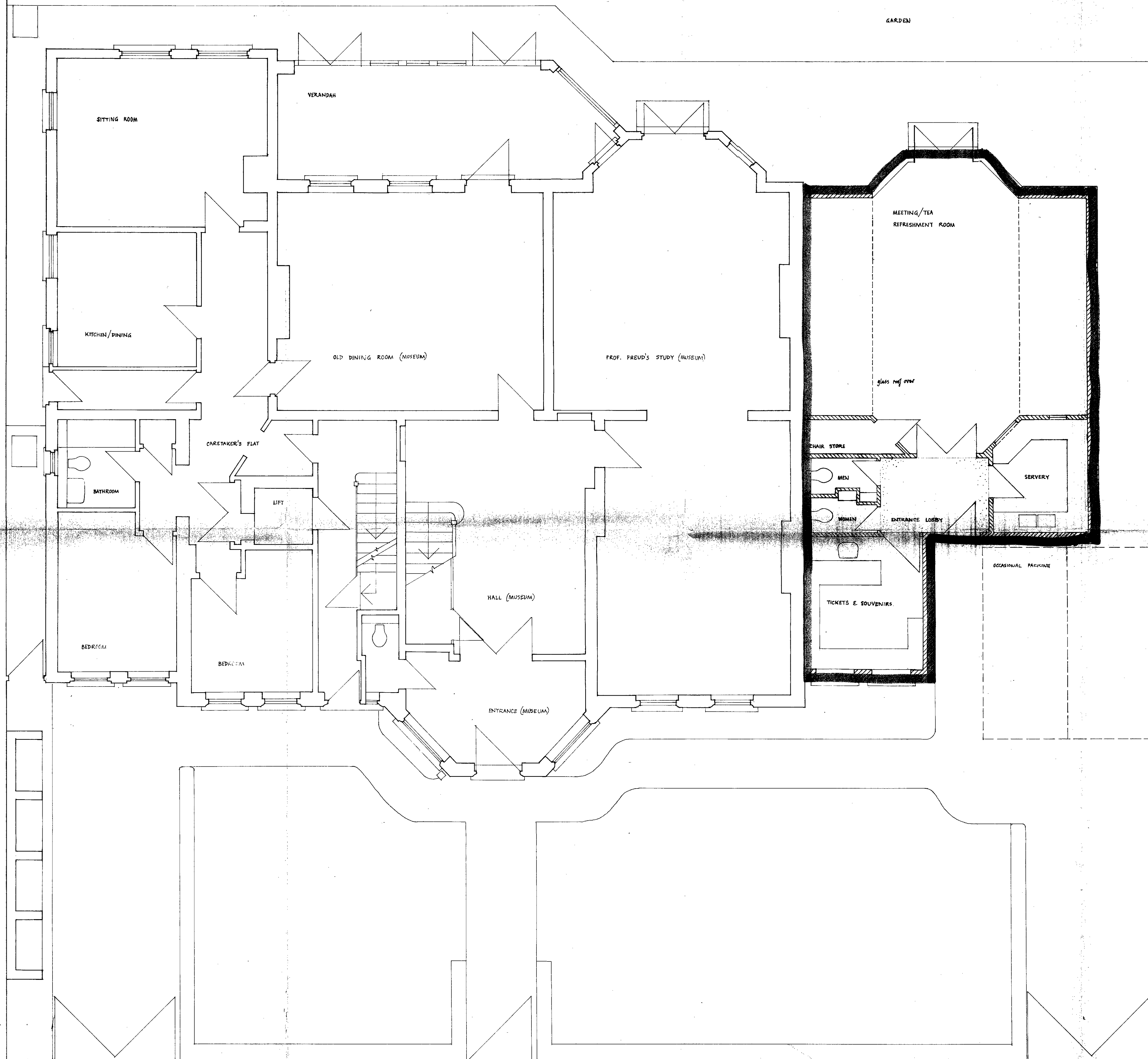
proposed Side Extension

LONDON BOROUGH OF CAMDEN
 PLANNING AND DEVELOPMENTS
 DEPARTMENT
 14th FLOOR (A.M.)
 RECEIVED
 ACK. REF. TO:

LONDON BOROUGH OF CAMDEN
 TOWN AND COUNTRY PLANNING ACTS
 - 1 JUL 1987
 PLANS ~~NOT APPROVED~~ APPROVED
 ON BEHALF OF THE COUNCIL

HB 8770094 R1
 TP 8602480 R1

NO.	1987	REVISIONS	CONSERVATORY ROOF CHANGES & LAYOUT	A
REVISION DATE		DESCRIPTION		LETTER
NB. CHECK ALL DIMENSIONS & REPORT ANY DISCREPANCIES TO ARCHITECT				
20 MAREFIELD GARDENS, LONDON NW3				
PROPOSED EXTENSION				
SIDE ELEVATION				
Lionel Stirgess AND PARTNERS ARCHITECTS				
99 Ashmill Street London NW1 6RA 01-261 9041				
Date	Scale	Drawing Number	Rev'n	
OCT '86	1/2" = 10'	581 / 300	A	



LONDON BOROUGH OF CAMDEN
 PLANNING AND COMMUNICATIONS
 DEPARTMENT
 - SHAW (A.M.)
RECEIVED
 ACK. REF. TO:

LONDON BOROUGH OF CAMDEN
 TOWN AND COUNTRY PLANNING ACTS
 - 1 JUL 1987
 PLANS ~~NOT APPROVED~~ APPROVED
 ON BEHALF OF THE COUNCIL

1RB 8770094

Revision	Date	Description	Letter

NB CHECK ALL DIMENSIONS & REPORT ANY DISCREPANCIES TO ARCHITECT

20, MARESFIELD GARDENS, LONDON, NW3
 NEW EXTENSION
 PLAN

Lionel Stirkess
 99 Ashmill Street London NW1 6RA 01-262 9041

Date	Scale	Drawing Number	Rev'n
SEPT '86	1/4" = 1'0"	561 / 301	