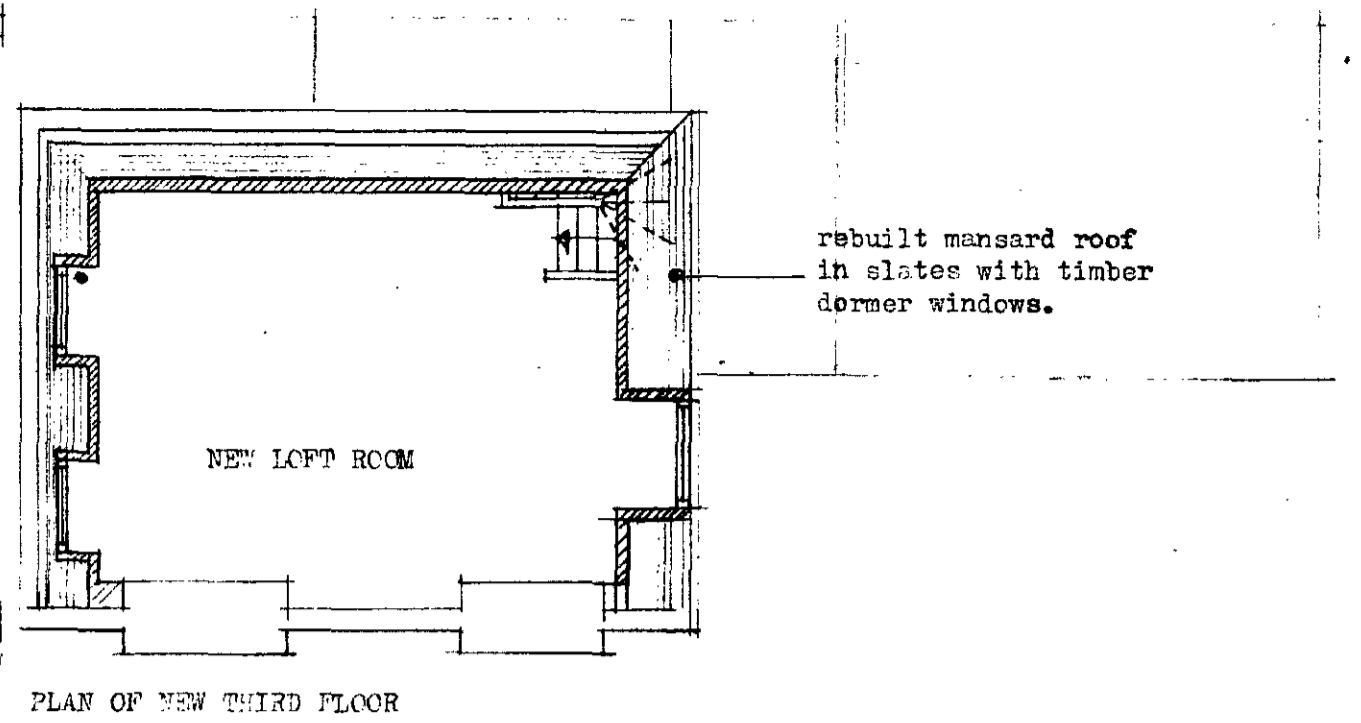
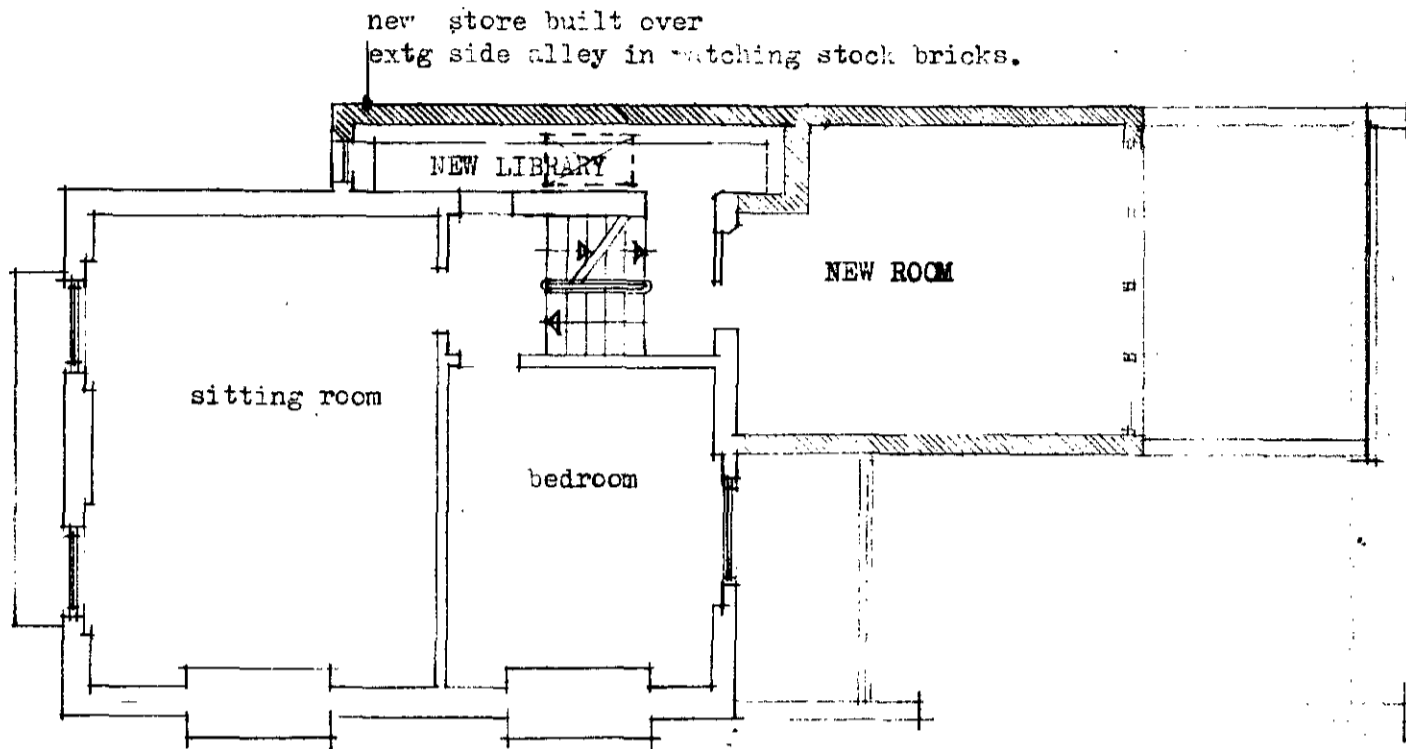


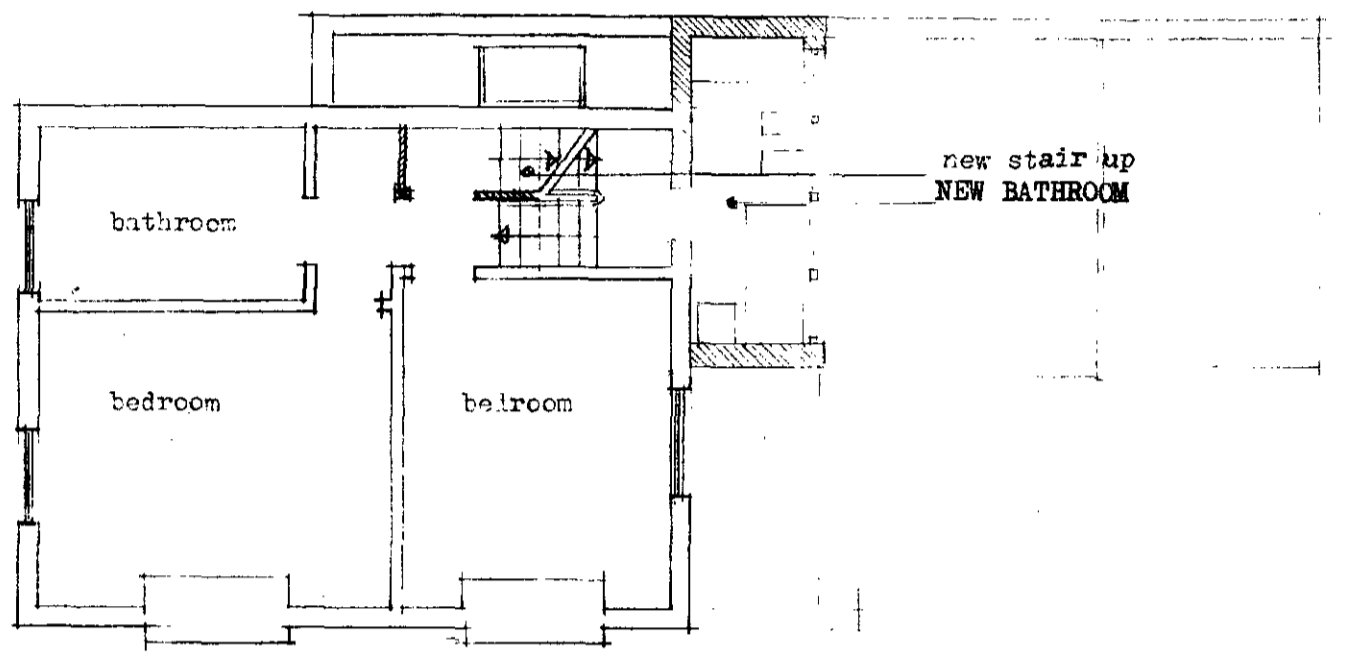
GROUND FLOOR PLAN



PLAN OF NEW THIRD FLOOR



FIRST FLOOR PLAN



SECOND FLOOR PLAN

STREET PARAPET WALL REMAINS AT EXISTING HEIGHT

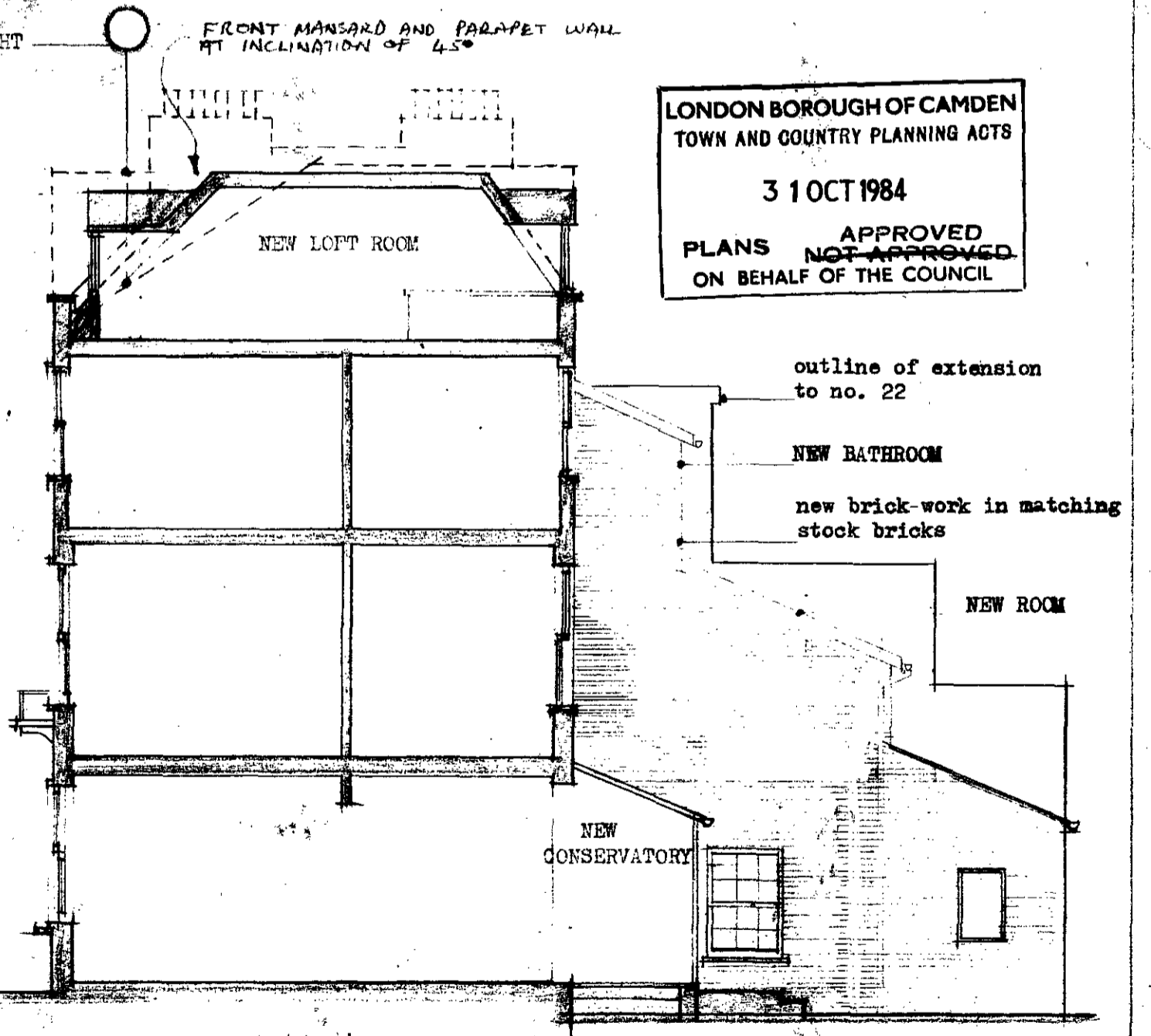
NEW MANSARD ROOF IN SLATES WITH WHITE PAINTED DORMERS

DOTTED LINES INDICATE PRESENT HEIGHT OF GABLE WALL AND ROOF.



STREET ELEVATION

GARDEN ELEVATION



SECTION THROUGH HOUSE AND CONSERVATORY

LONDON BOROUGH OF CAMDEN
TOWN AND COUNTRY PLANNING ACTS
3 1 OCT 1984
PLANS APPROVED
NOT APPROVED
ON BEHALF OF THE COUNCIL

8401403

REVISION-A 12/2/82 FRONT GABLE AT 45° + PARAPET WALL

PROPOSED EXTENSION TO NO. 22 WILLES ROAD LONDON NW5.

scale: 1:100

Jan 1982

Berman 6a Orde Hall Street
London WC1N 3JW
Guedes Telephone 01-242 8102

A