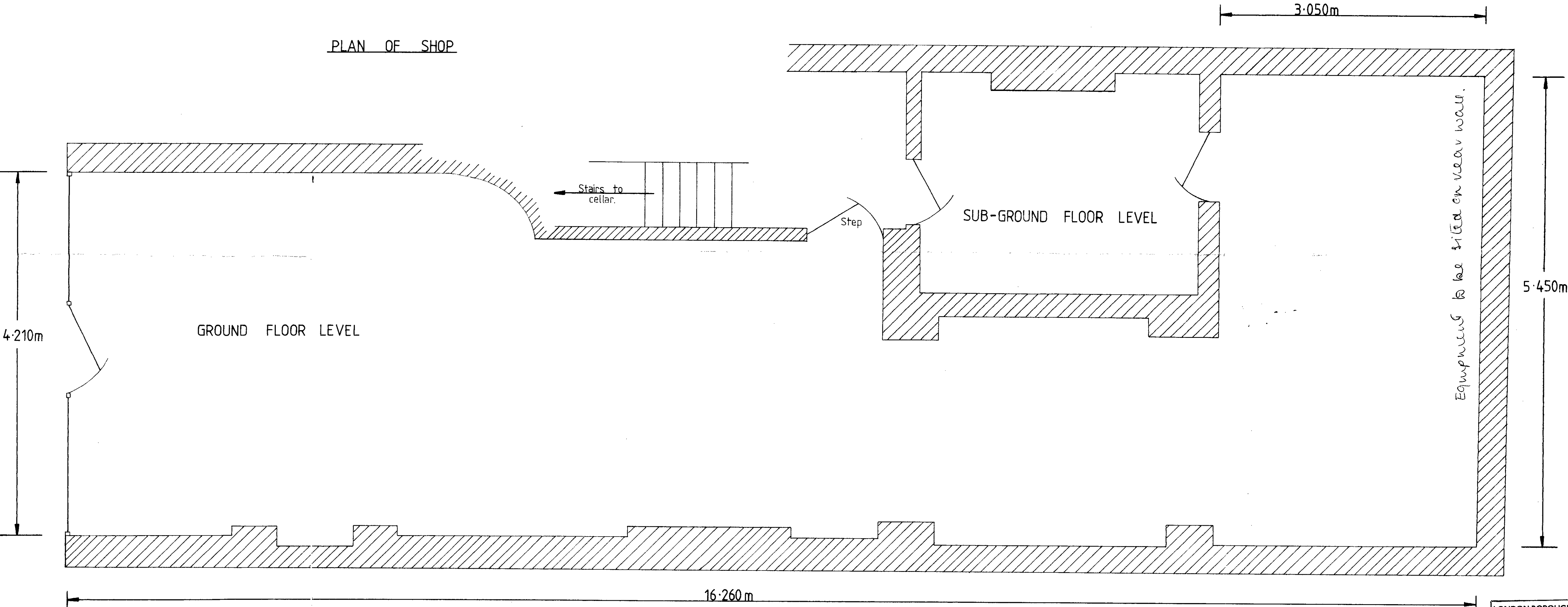


NOTES :

1. Height to suspended ceiling = 2.570.
2. Thicknesses of perimeter walls are assumed.

PLAN OF SHOP



LONDON BOROUGH OF CAMDEN  
TOWN AND COUNTRY PLANNING ACTS  
17 APR 1984  
APPROVED  
PLANS NOT APPROVED  
ON BEHALF OF THE COUNCIL

IP/57/9/10/8400175

CLIENT: WELSS GROUP OF COMPANIES.

SHOP ADDRESS: 35, BELSIZE LANE, NW:3

SCALE 1:25

DATE: 24th September 1983

SUPPLIED BY: DRY CLEANING EQUIPMENT SUPPLIES. 14A, Leytonstone Road, London, E.15

DRAWN BY: N.GUL. 74, Selwyn Road, Plaistow, London, E.13 O.P.Y