

GROUND FLOOR.

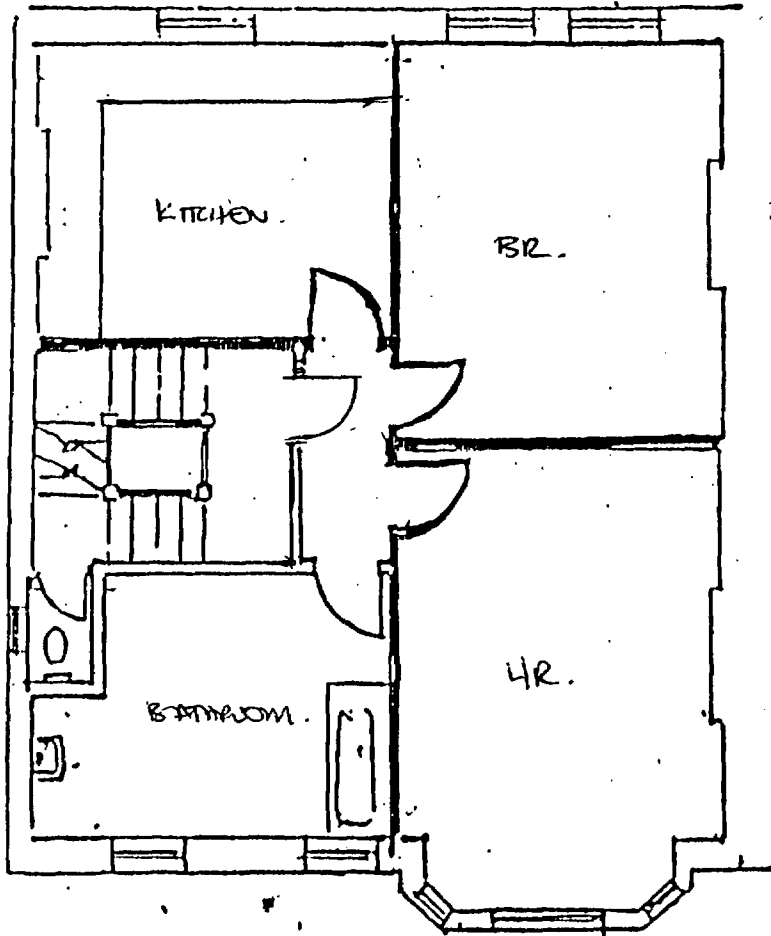
LONDON BOROUGH OF CAMDEN
 TOWN AND COUNTRY PLANNING ACTS
 01 NOV 1995
 PLANS APPROVED
 ON BEHALF OF THE COUNCIL

10 LAMBOLLE ROAD NW 3

P9602668

EXISTING.

06.478.01.



LONDON BOROUGH OF CAMDEN
TOWN AND COUNTRY PLANNING ACTS
01 NOV 1956
PLANS APPROVED
ON BEHALF OF THE COUNCIL

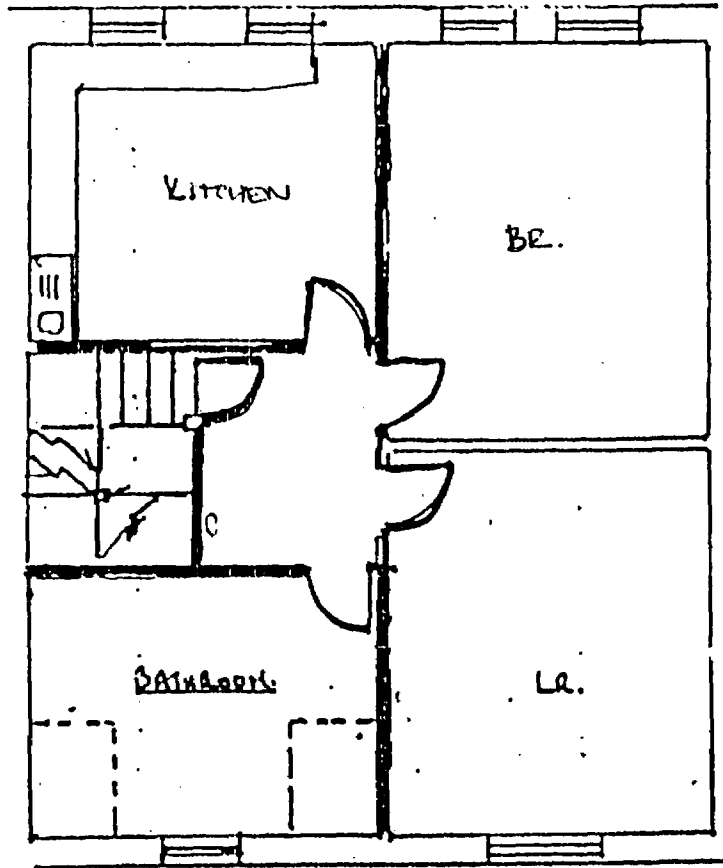
First Floor.

P9602668

10, LAMBOLLE ROAD NW 3

EXISTING.

06.478.02.



LONDON BOROUGH OF CAMDEN
TOWN AND COUNTRY PLANNING ACTS
01 NOV 1996
PLANS APPROVED
ON BEHALF OF THE COUNCIL

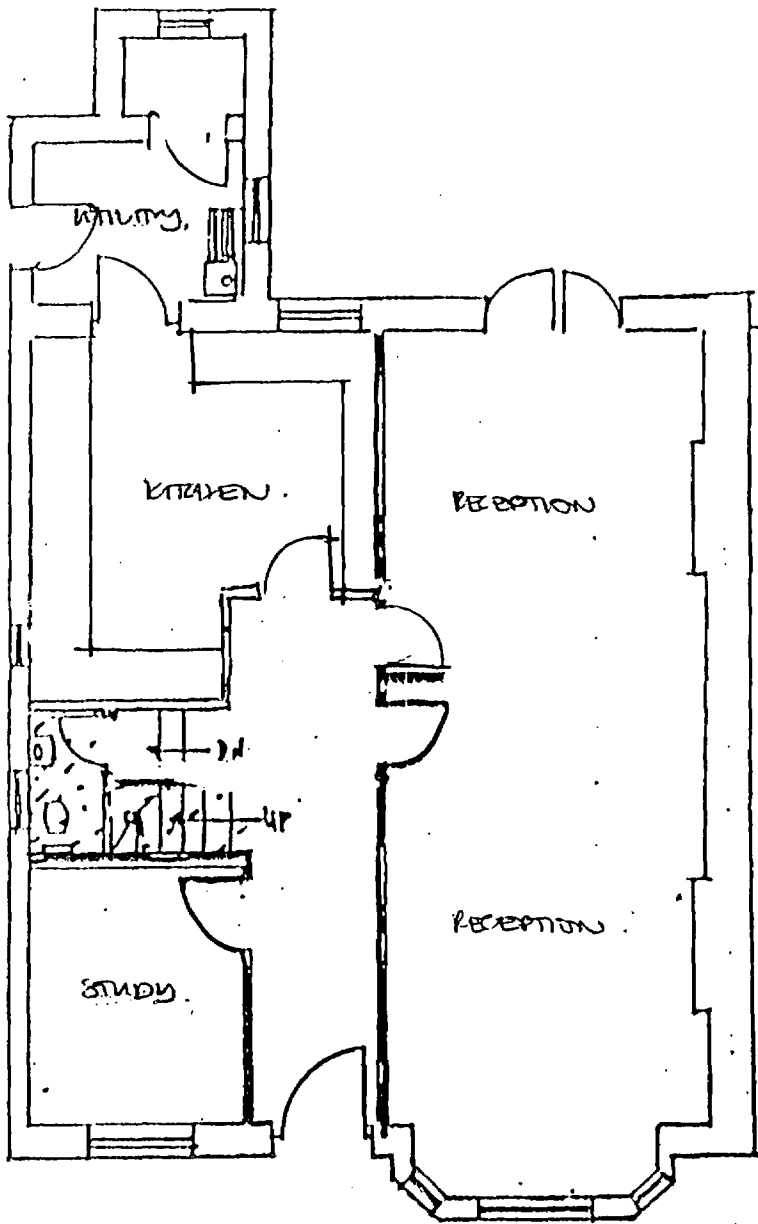
SECOND FLOOR

P9602668

10 LAMBOLLE ROAD N.W. 3

EXISTING.

06.478.03



GROUND FLOOR.

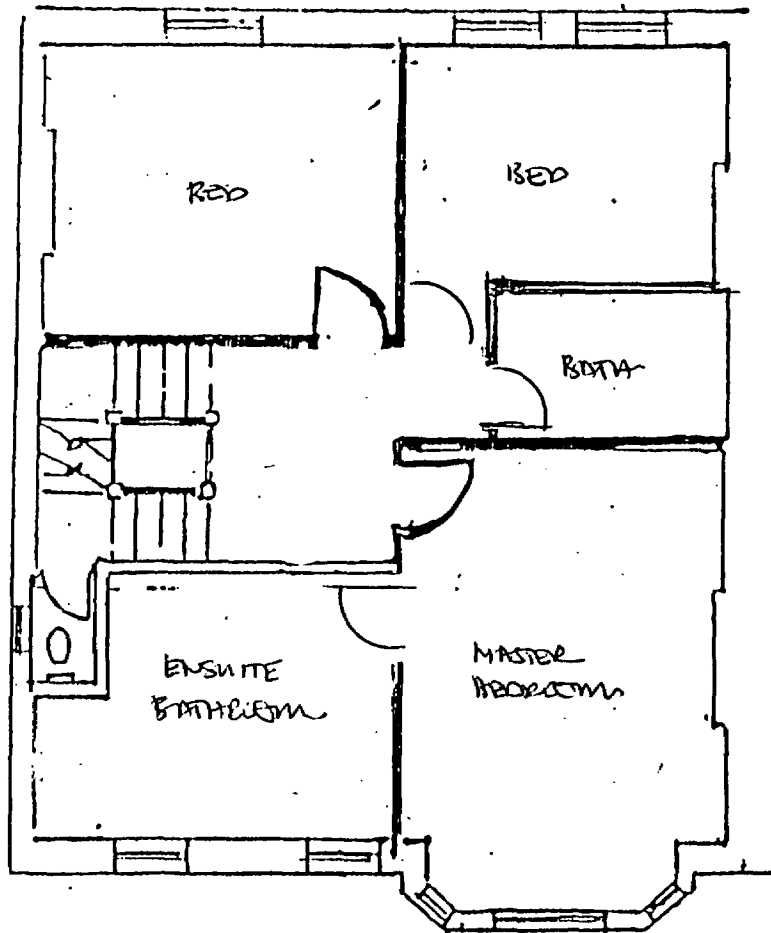
10 LAMDOLLE ROAD NW 3

P9602668

PROPOSED.

06.478.04

LONDON BOROUGH OF CAMDEN
TOWN AND COUNTRY PLANNING ACTS
01 NOV 1996
PLANS APPROVED
ON BEHALF OF THE COUNCIL



LONDON BOROUGH OF CANNON
TOWN AND COUNTRY PLANNING
01 NOV 1996
PLANS APPROVED
ON BEHALF OF THE COUNCIL

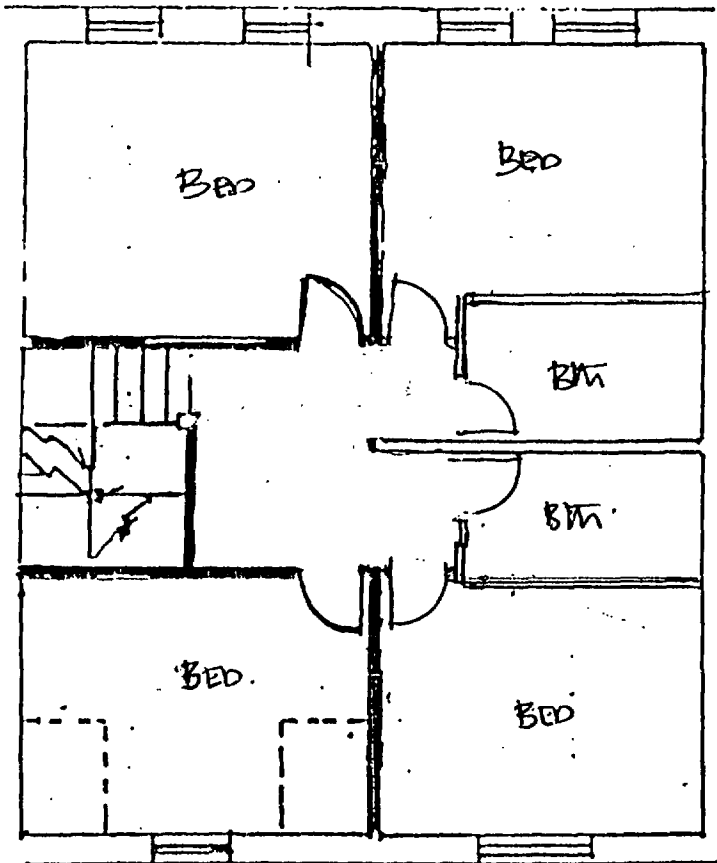
First Floor.

P9602668

10, LAMBOLLE ROAD NW 3

PROPOSED.

06.478.05



LONDON BOROUGH OF CROYDON
TOWN AND COUNTRY PLANNING DEPARTMENT
01 NOV 1996
PLANS APPROVED
ON BEHALF OF THE COUNCIL

SECOND FLOOR.

10 LAMBOLLE ROAD N.W. 3

P9602668

PROPOSED.

06.478.06