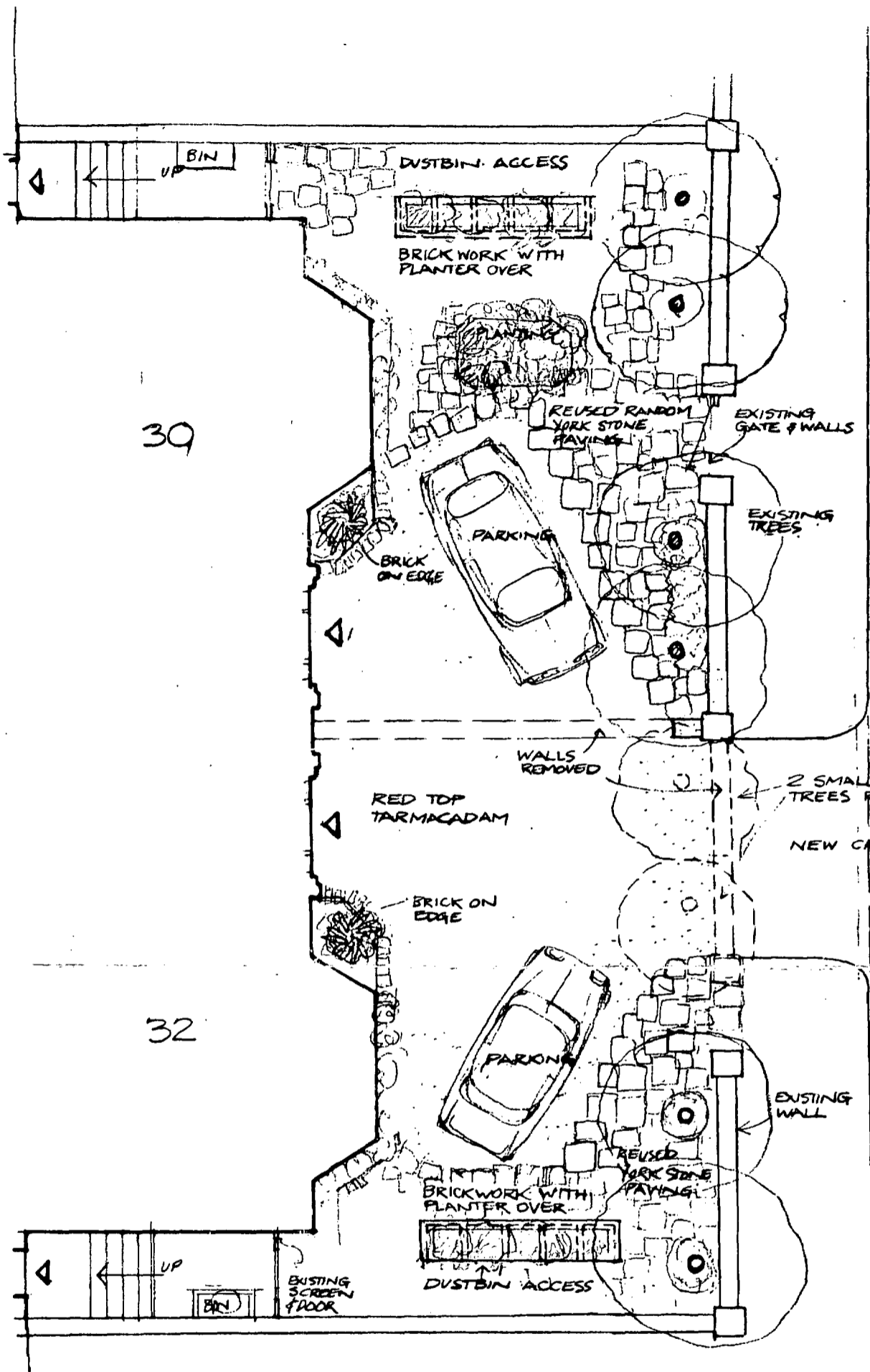


PLANNING AND COMMUNICATIONS  
 DEPARTMENT  
 CAMDEN  
 - 5 MAR 1984



COMPAYNE GARDENS

SCALE: 1:96  
 (1/8" = 1'-0")

LONDON BOROUGH OF CAMDEN  
 TOWN AND COUNTRY PLANNING ACTS  
 - 9 MAY 1984  
 PLANS ~~NOT APPROVED~~ APPROVED  
 ON BEHALF OF THE COUNCIL

CTP/96/10/1/8400409.

30-32 COMPAYNE GARDENS  
 NW6

FRONTAGE  
 PARKING &  
 LANDSCAPING

DRAWING  
 N° 30/32CG/5

DAVID RICHARD BURTON  
 DIP LARCH., R.I.B.A.  
 CHARTERED ARCHITECT  
 16 GODOLPHIN HOUSE  
 FELLOWS ROAD LONDON  
 NW3 3LG 01-722 9577