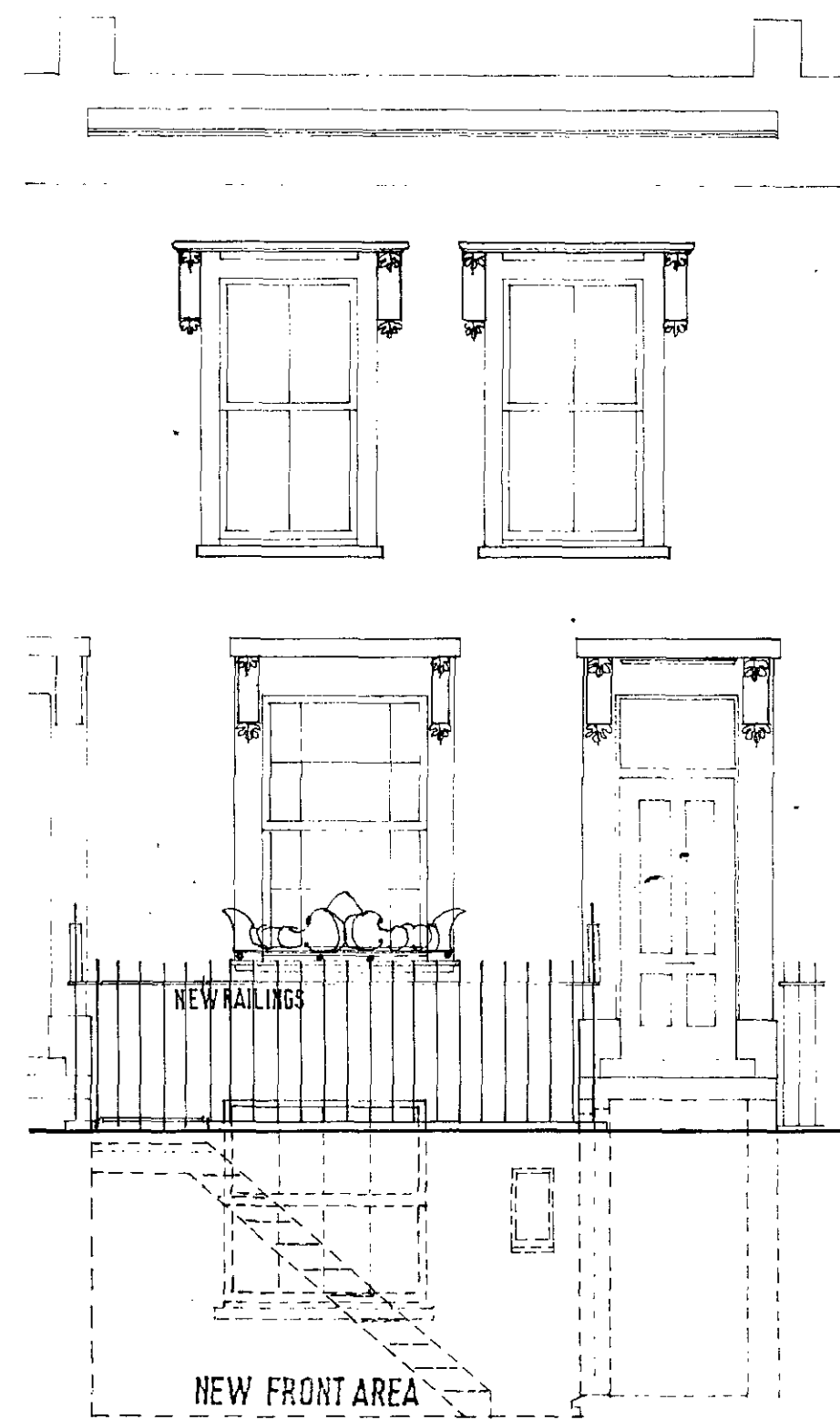
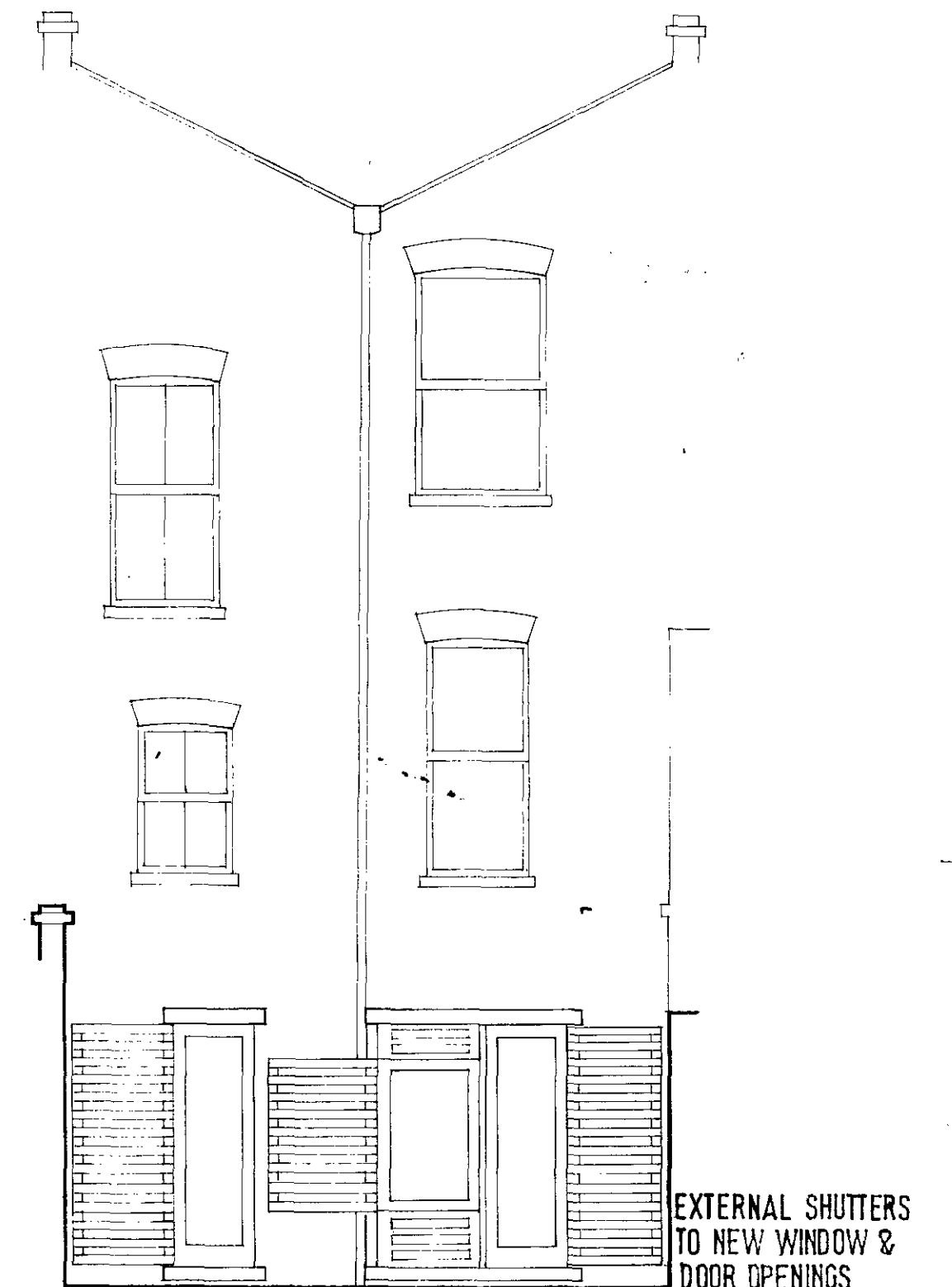


SECTION



STREET ELEVATION



REAR ELEVATION

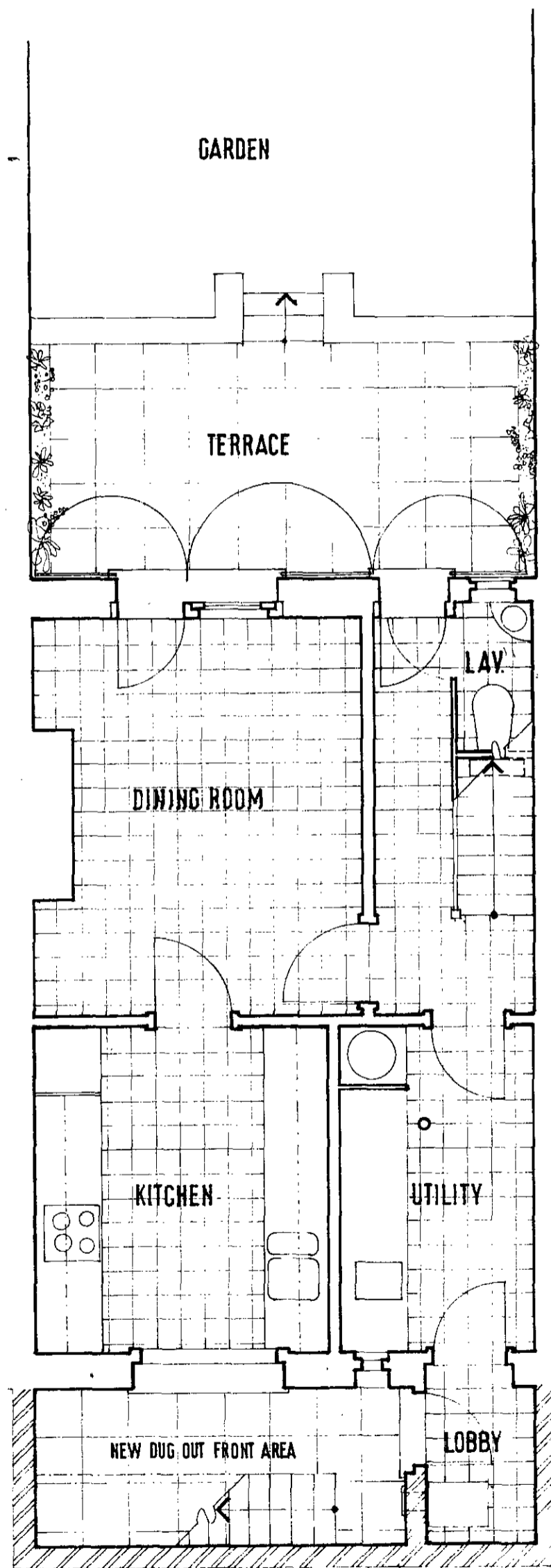
LONDON PROPERTY FOR CAMDEN
 14 ATRICOT
 PLANS
 ONE BEHIND OF

Copy Copy.

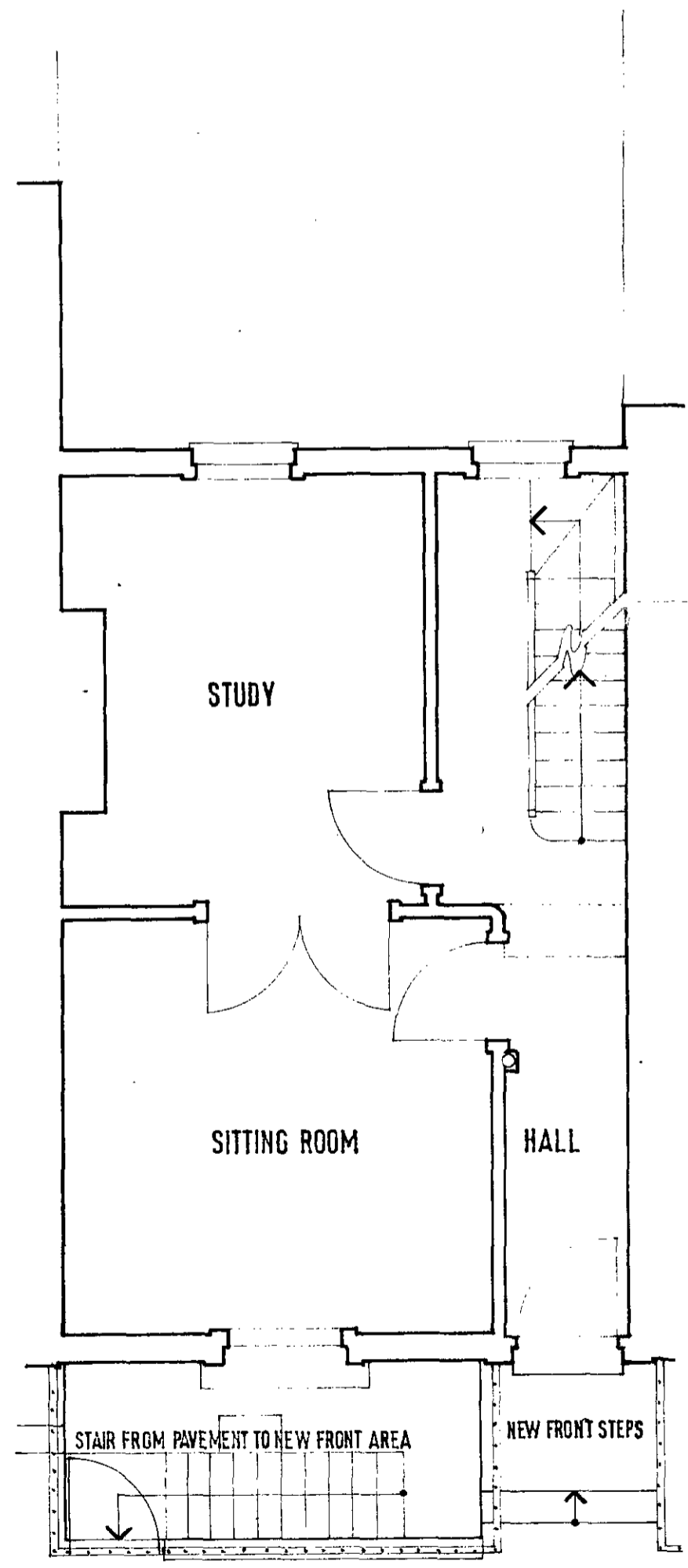
911 11 18 / 32024

GODELA v. XYLANDER and TONY SWANNELL ARCHITECTS
 15 Alwyne Villas
 London N1 2HG telephone 01-359 4755

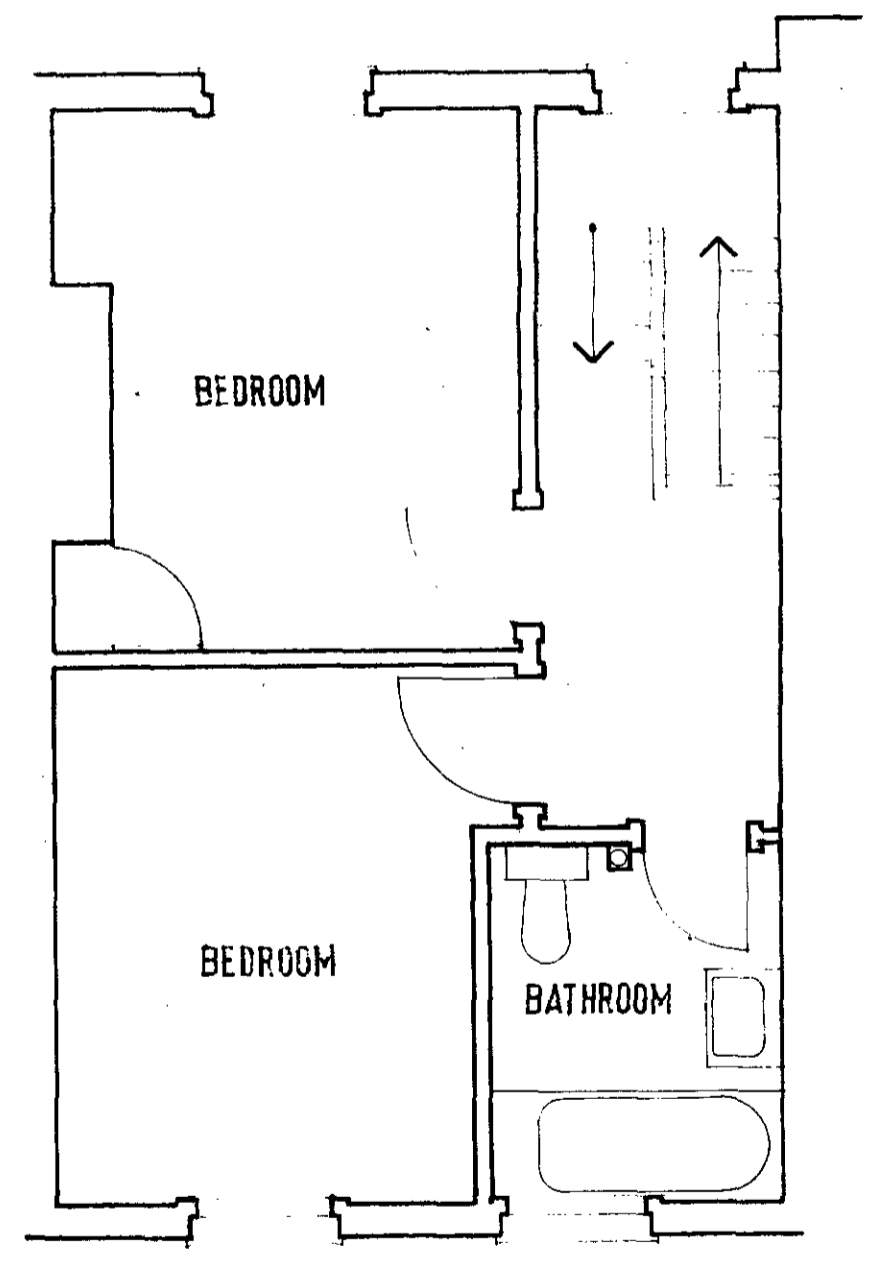
Job:	19 ALMA STREET LONDON NW5	Scale:	1:50
Drawing Title:	SECTION & ELEVATIONS : PROPOSED	Dwg No:	35.4
		Revision:	



BASEMENT



GROUND FLOOR



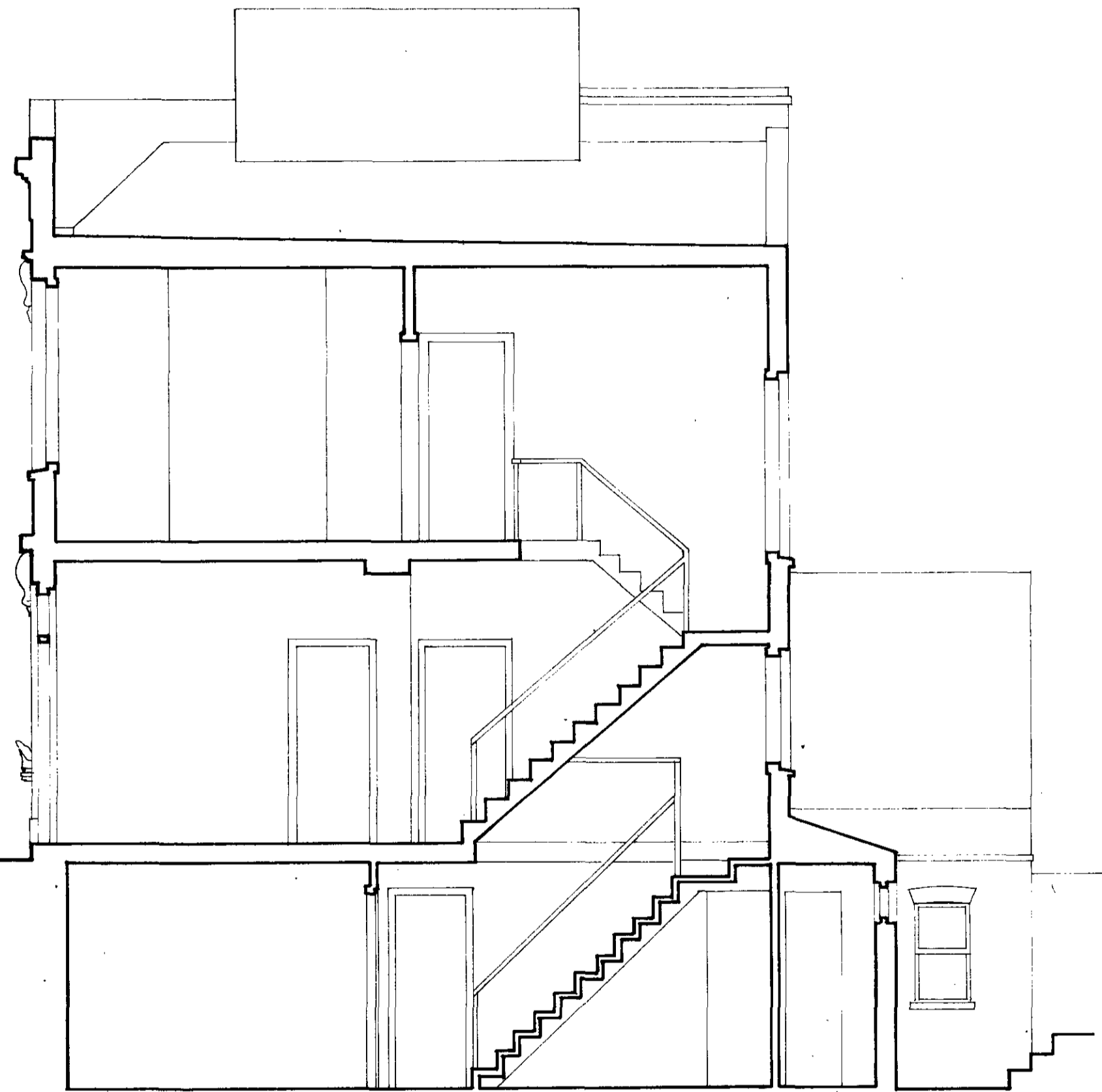
FIRST FLOOR

LONDON BOROUGH OF CAMDEN
TOWN AND COUNTRY PLANNING ACTS
14 APR 1991
PLANS ~~NOT APPROVED~~ APPROVED
ON BEHALF OF THE COUNCIL

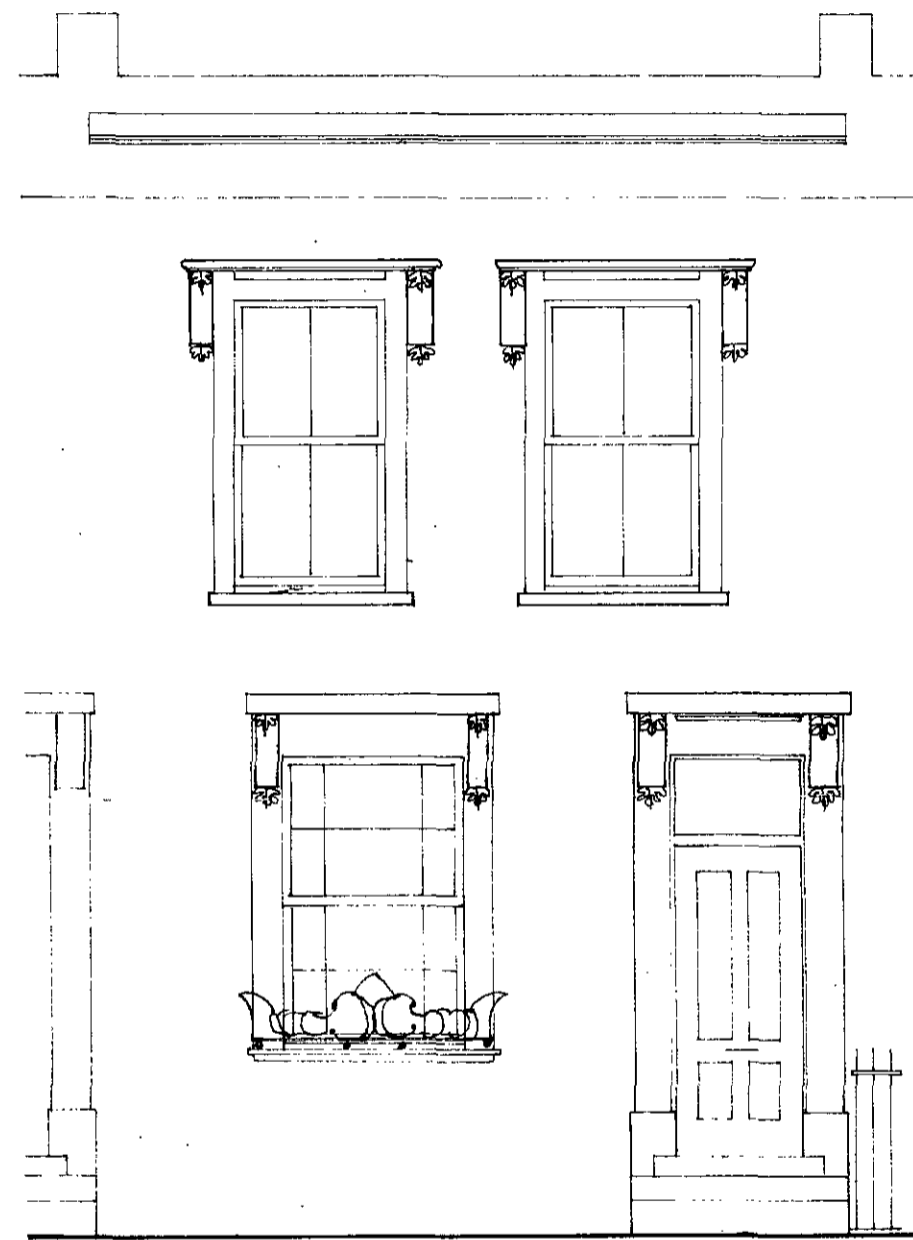
CASE COPY.
CTP/911/11/18/32024

GODELA v. XYLANDER and TONY SWANNELL ARCHITECTS
15 Alwyne Villas
London N1 2HC telephone 01-359 4755

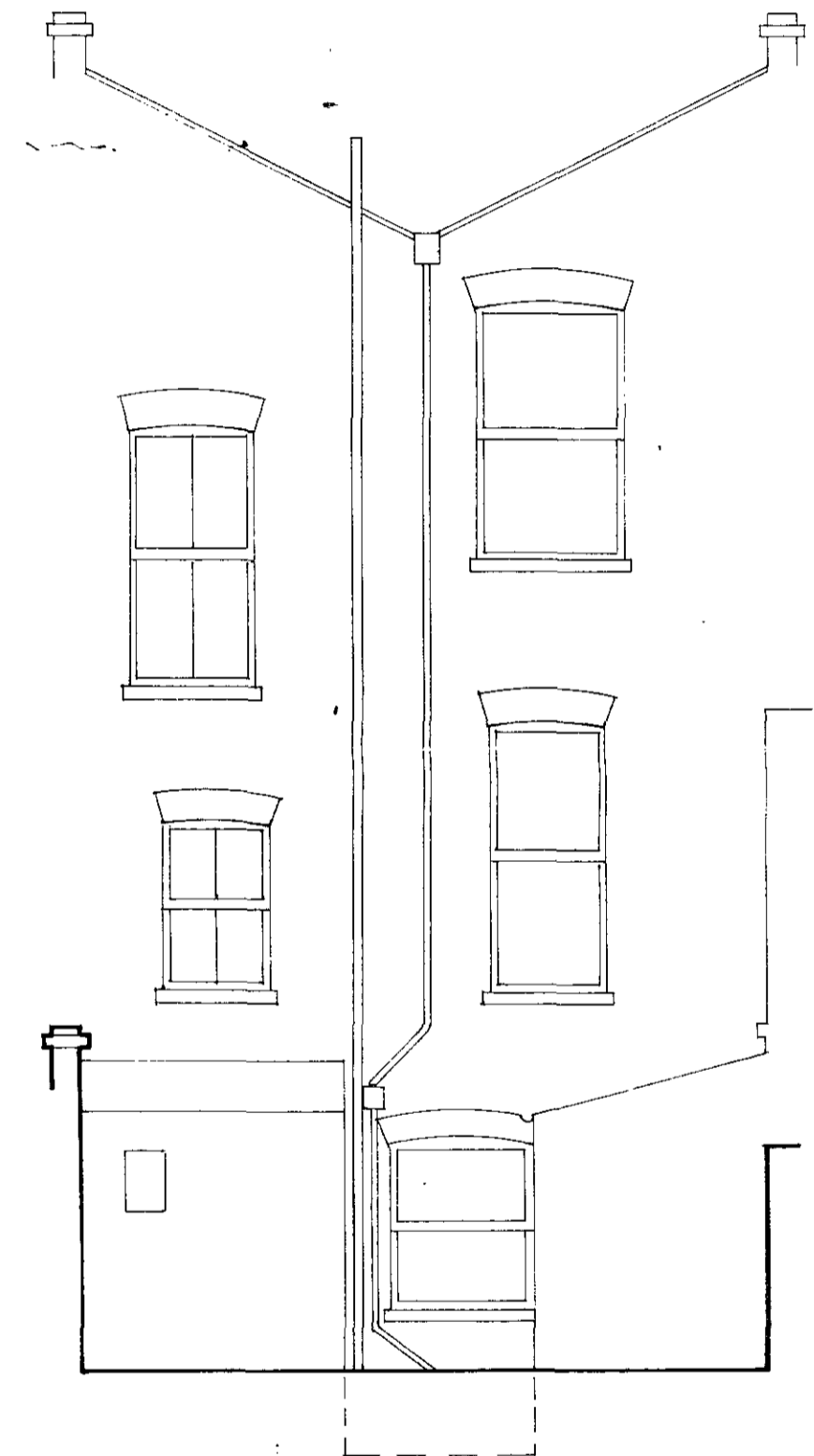
Job		Scale
19 ALMA STREET LONDON NW5		1:50
Drawing Title		Draw No.
PROPOSED PLANS		35.3
		Revision



SECTION



STREET ELEVATION



REAR ELEVATION

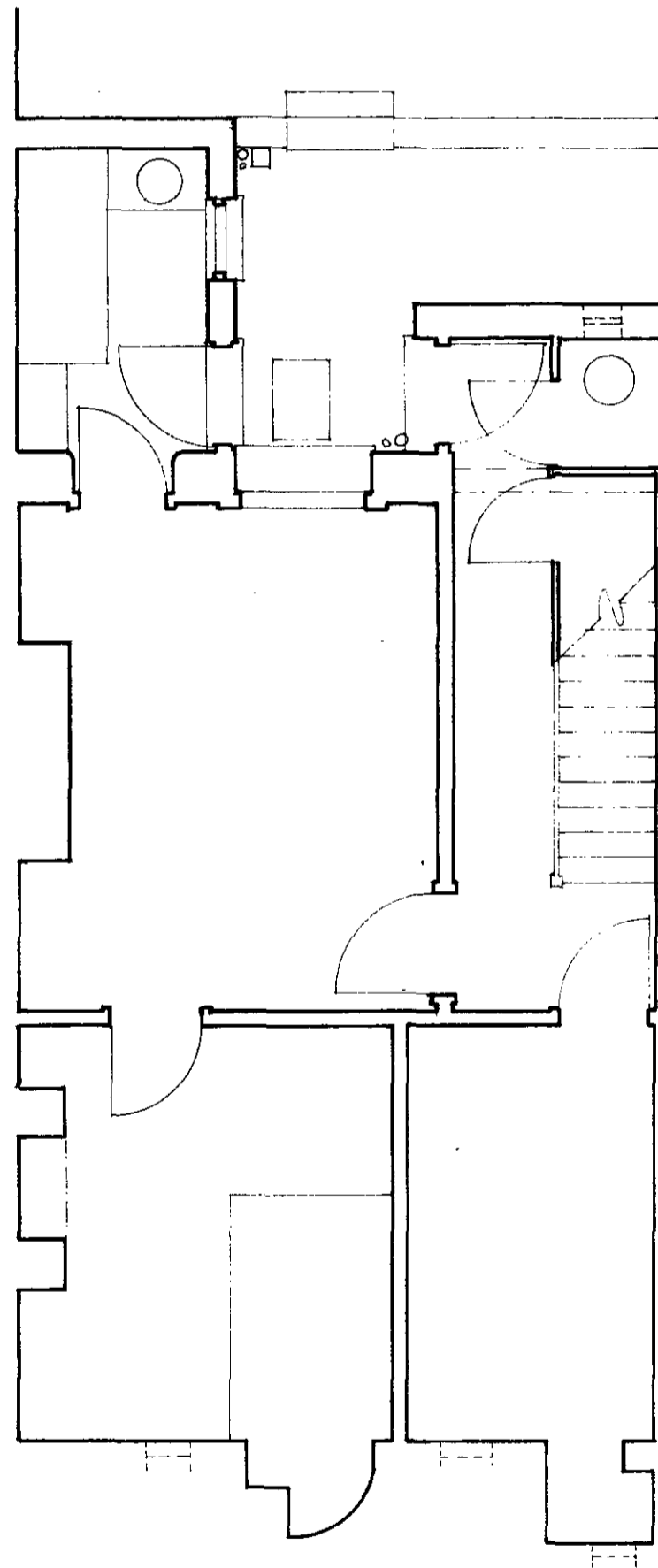
LONDON BOROUGH OF CAMDEN
 TOWN AND COUNTRY PLANNING ACTS
 14 APR 1981
 PLANS ~~NOT APPROVED~~ APPROVED
 ON BEHALF OF THE COUNCIL

CASE COPY.

CT/911/18/32024

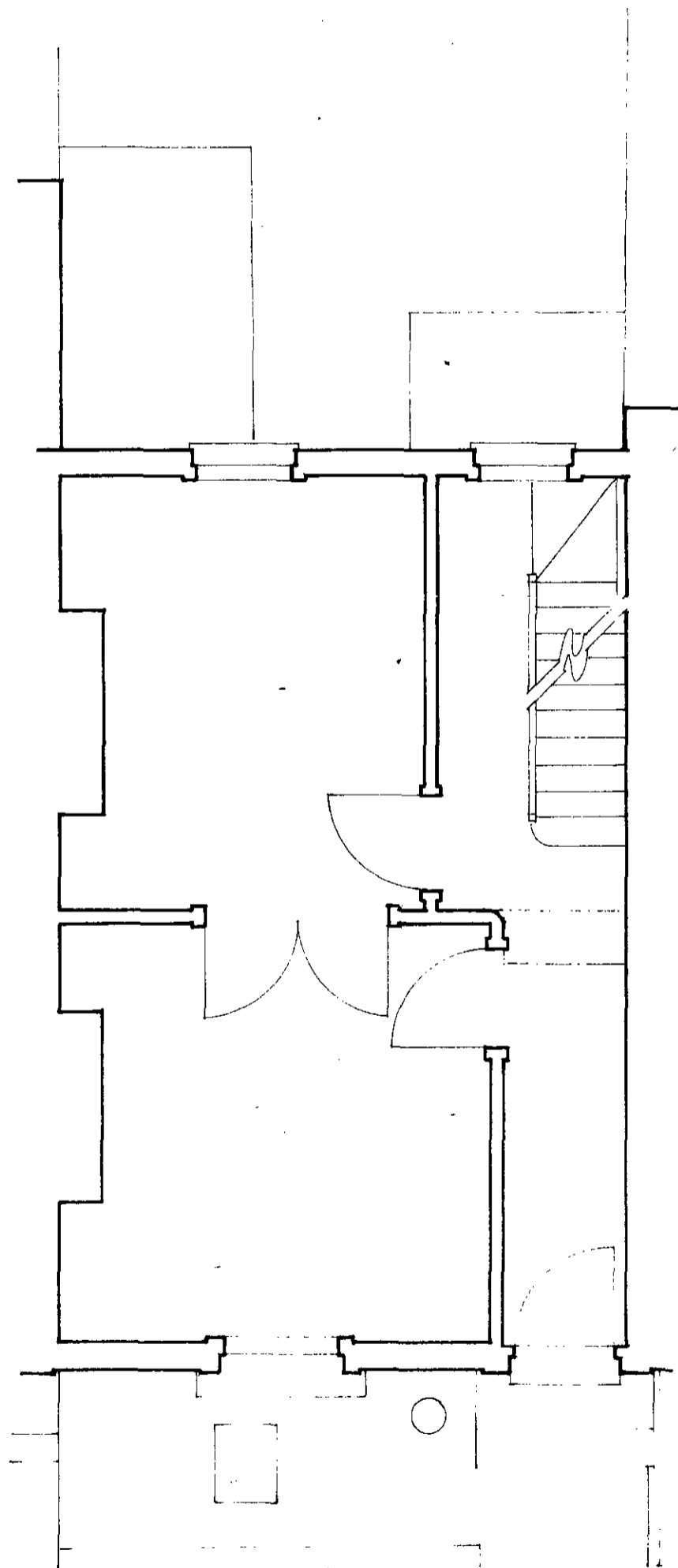
GODELA v. XYLANDER and TONY SWANNELL ARCHITECTS
 15 Alwyne Villas
 London N1 2HG
 telephone 01-359 4756

Job	19 ALMA STREET LONDON NW5	Scale	1: 50
Drawing Title	SECTION & ELEVATIONS : SURVEY	Dwg No	35-2
		Revision	

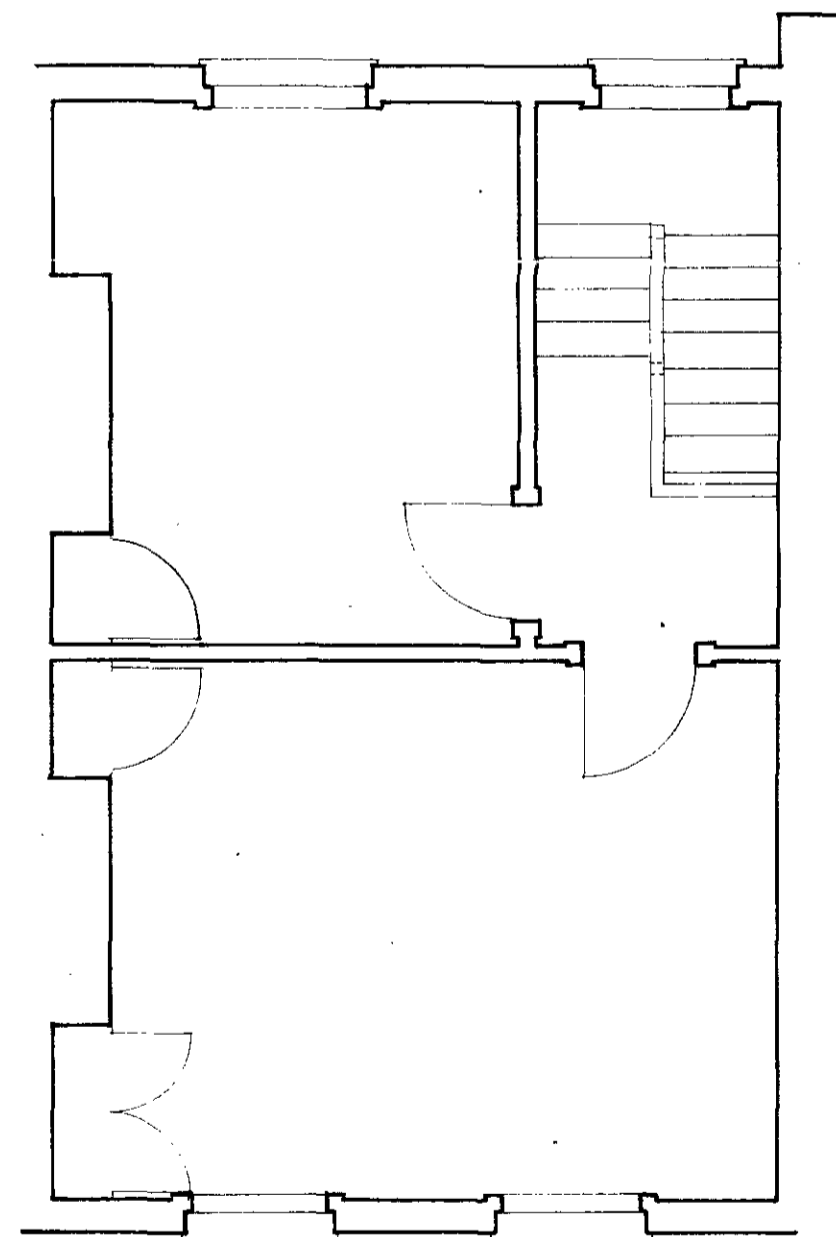


BASEMENT

LONDON BOROUGH OF CAMDEN
 TOWN AND COUNTRY PLANNING ACTS
 14 APR 1981
 PLANS APPROVED
 ON BEHALF OF THE COUNCIL



GROUND FLOOR



FIRST FLOOR

CASE COPY

14/11/18/32024

GODELA v. XYLANDER and TONY SWANNELL ARCHITECTS
 15 Alwyne Villas
 London N1 2HC telephone 01-359 4755

19 ALMA STREET LONDON NW5		1:50
SURVEY PLANS		35-1