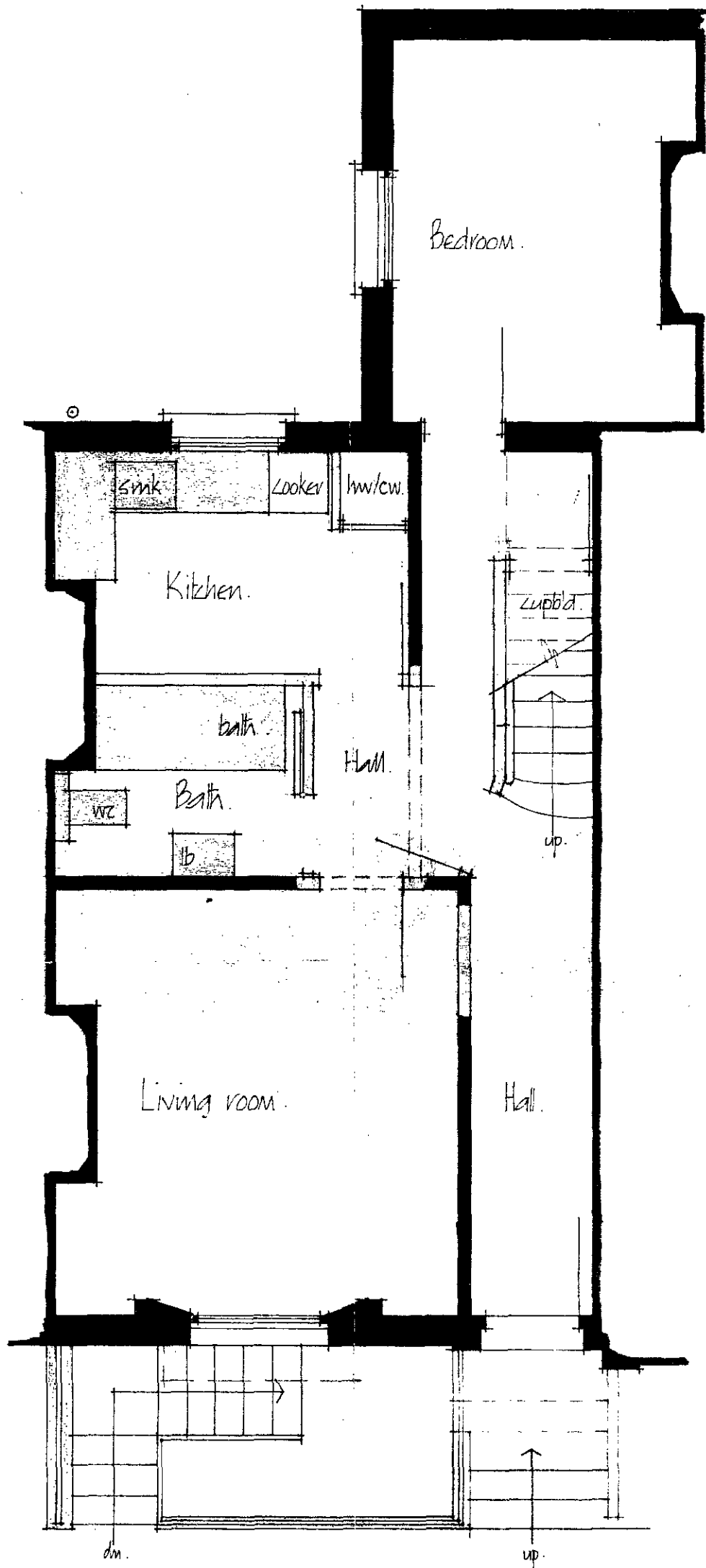
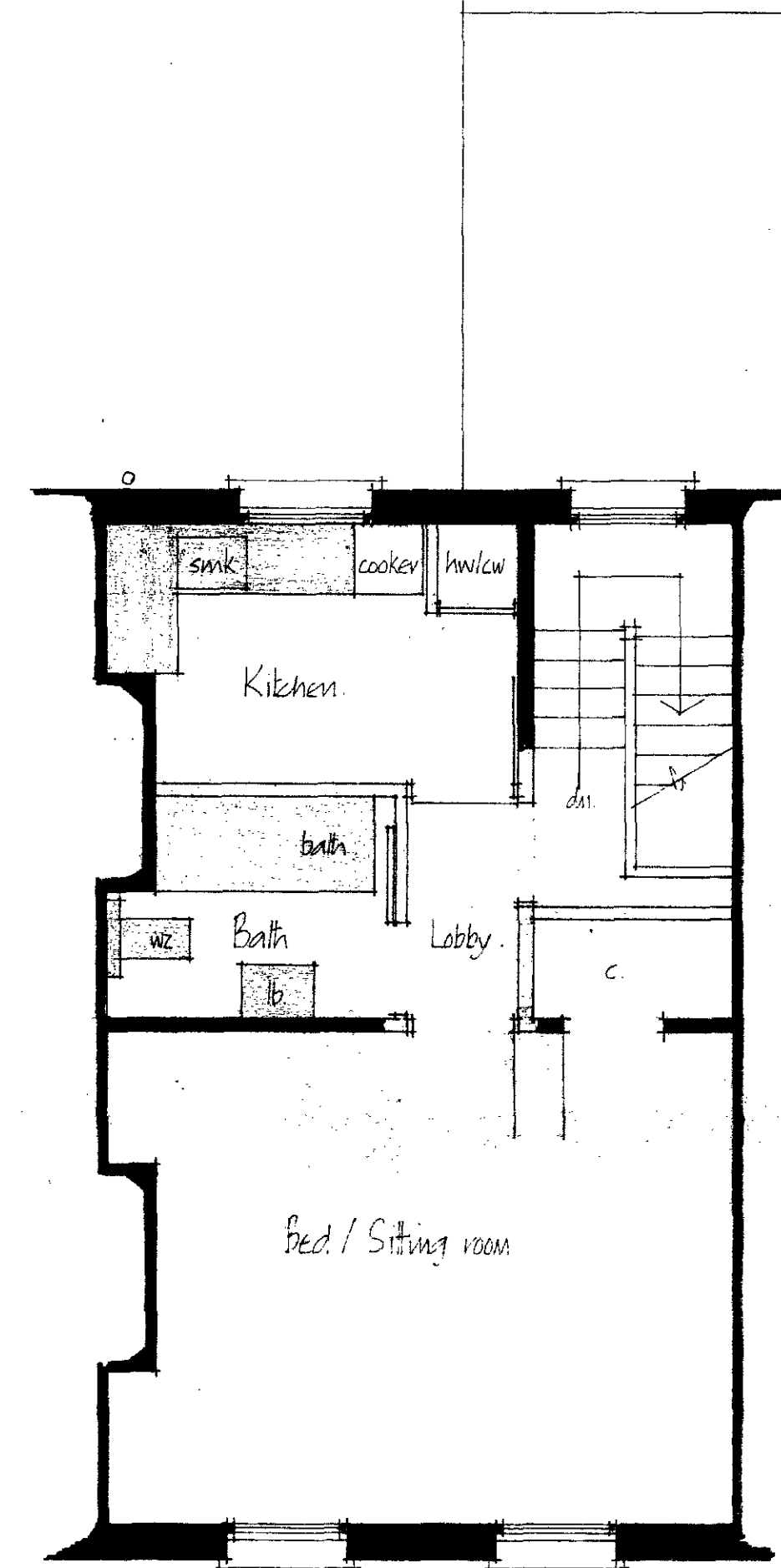


BASEMENT PLAN [464 sq.ft.]



GROUND FLOOR PLAN [414 sq.ft.]



FIRST FLOOR PLAN [339 sq.ft.]

LONDON BOROUGH OF CAMDEN
 PLANS APPROVED
 27 FEB 1975
 ON BEHALF OF THE COUNCIL

CTP/g11/11/10/19866

20, ALMA STREET, LONDON, NW5.

CASE COPY

PROPOSED CONVERSION INTO 3 S/C 1-PERSON UNITS

Revision
 A. Bathrooms, + Kitchens re-positioned in upper units
 Entrance to GF unit re-sited

DWG. NO. CJN S.1.A
 Scale: 1/4" = 1' 0"
 Date: June 74.

Drawing prepared by:
 John Best,
 92, Windermere Road, Ealing, W5 4TH.
 Tel: 01.567.1539.