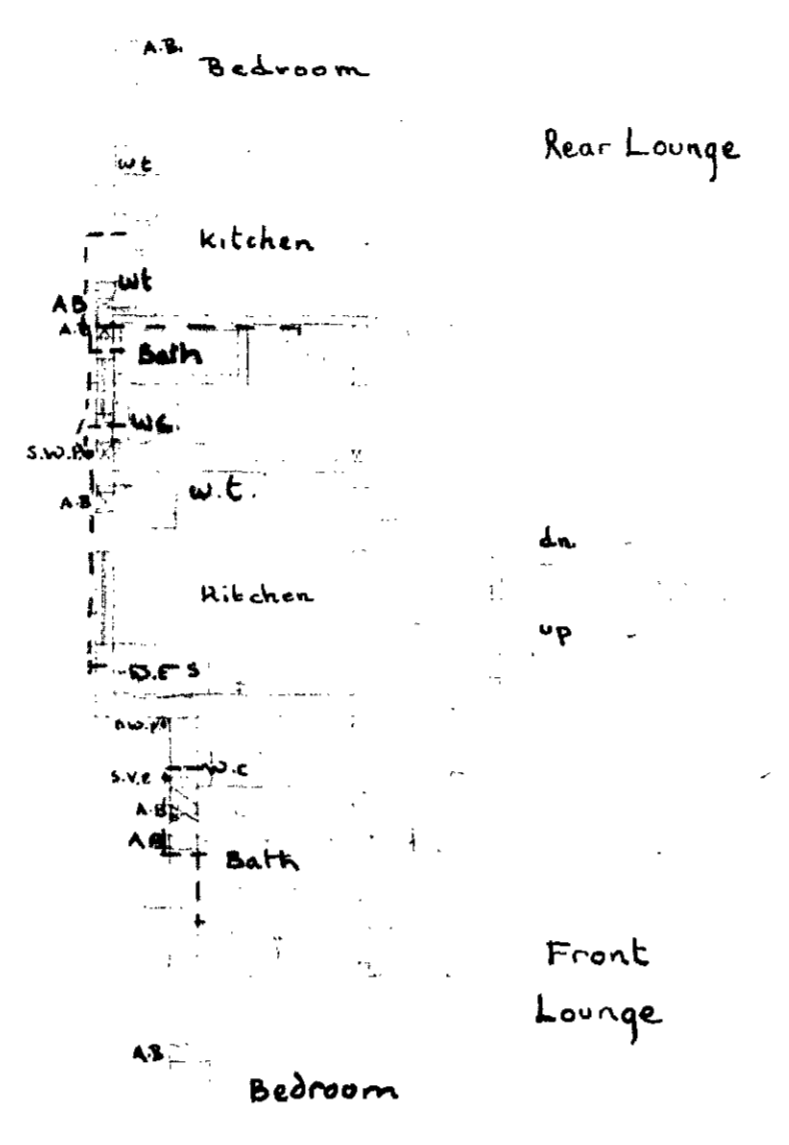


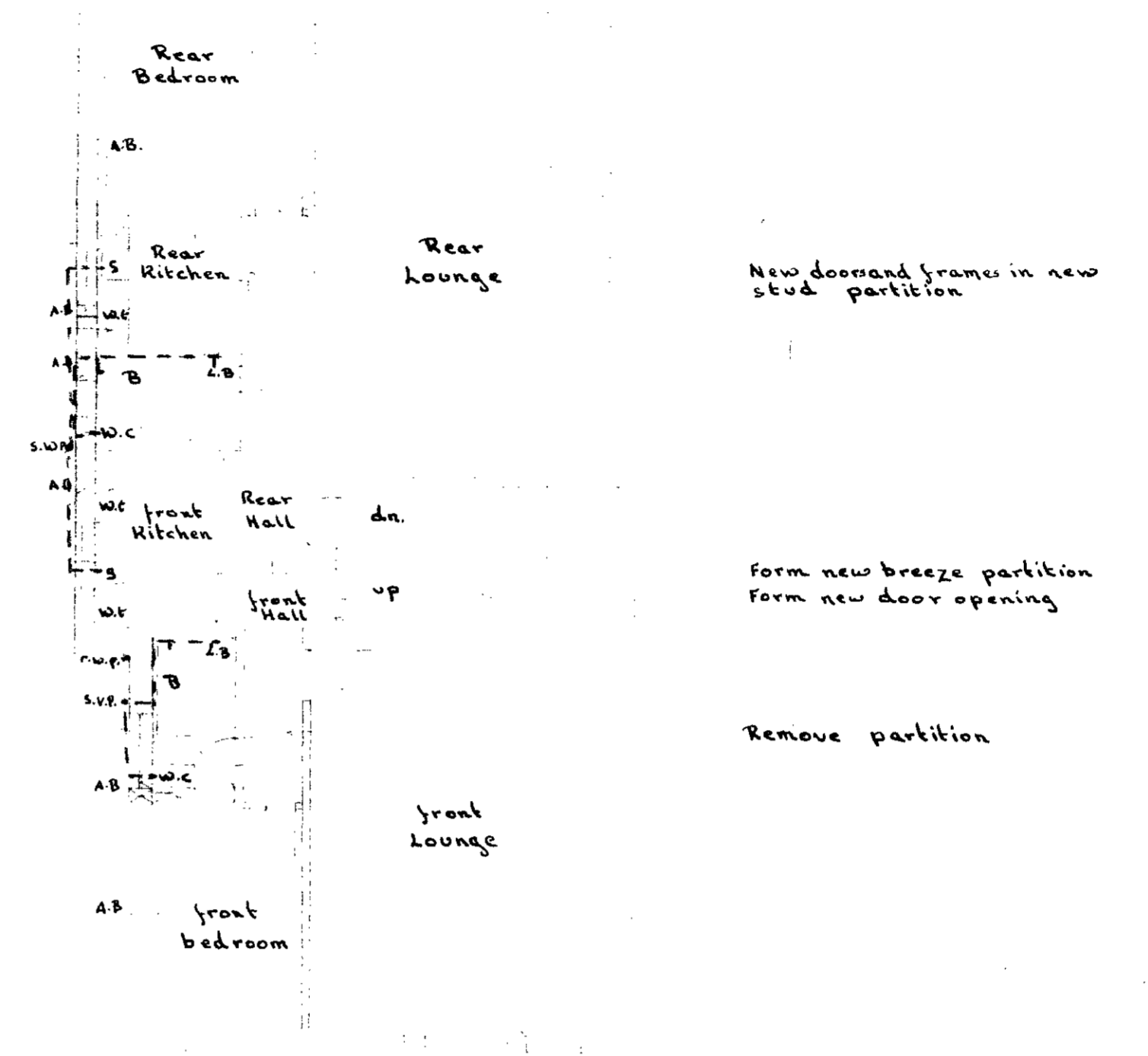
THIRD FLOOR.

- New stud partition with new doors & frames
- New 4'0" x 3'6" standard wooden window with X panel fitted
- Ventilated food cupboard
- New 2'1/4" x 3'6" standard wooden window
- Existing 20 gallon Sadia water heater with ventilated food cupboard over
- New 4'0" x 3'6" standard wooden window
- Form New work surface
- Existing sink and kitchen units
- Existing W.C. suite
- 9"x9" trunking to ventilate lobby
- New 4'0" x 3'6" standard wooden window

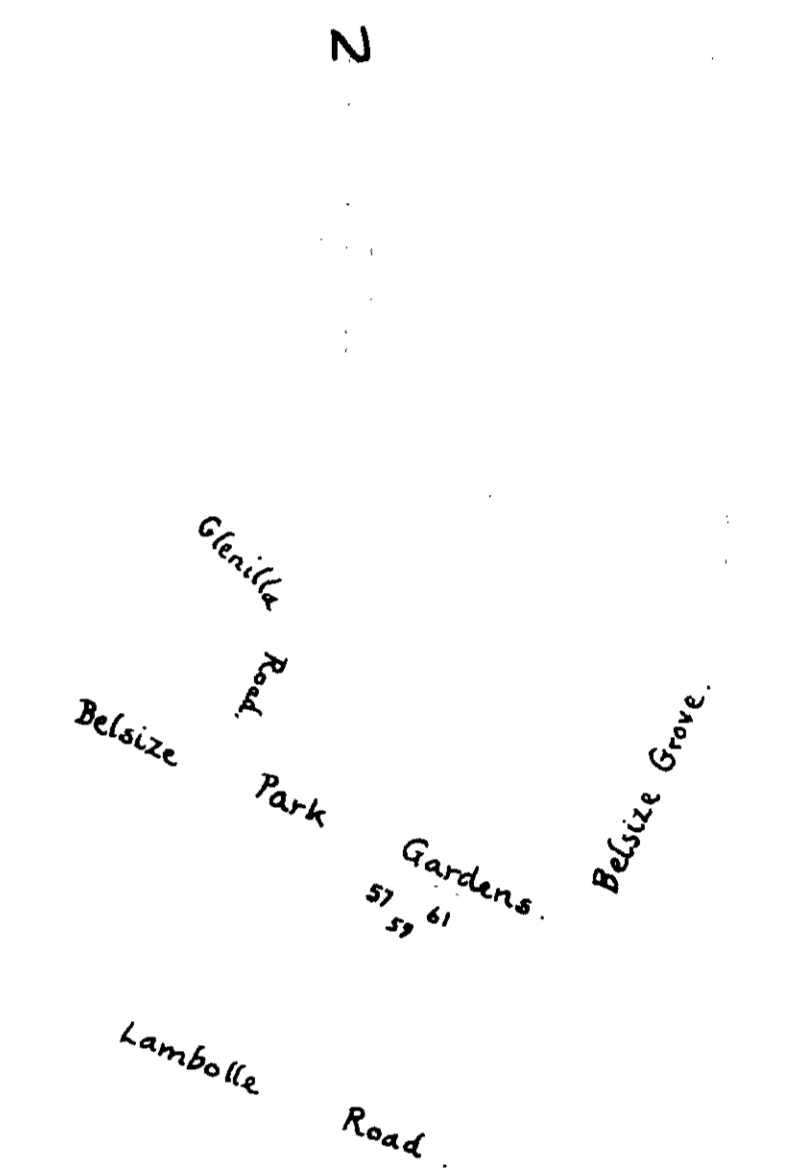


SECOND FLOOR.

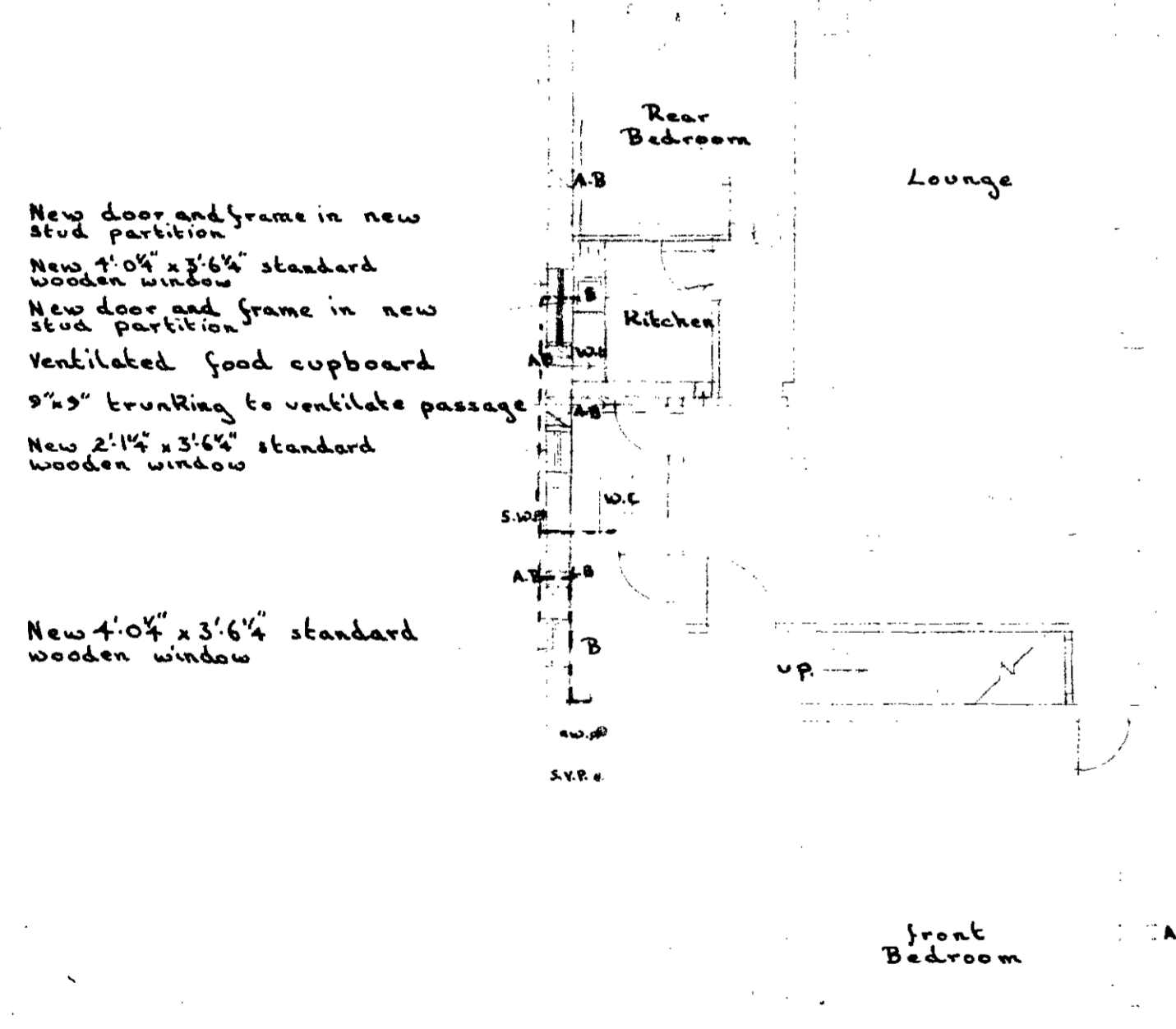
- Door and frame removed
- 9"x9" trunking to ventilate lobby
- Door blocked up
- New flat entrance doors and partition to divide flats
- Door and frame removed
- New door and frame in new stud partition
- New door and frame in new stud partition
- New 4'0" x 3'6" standard wooden window
- 9"x9" trunking to ventilate lobby
- New doors and frames in new stud partitions



FIRST FLOOR.

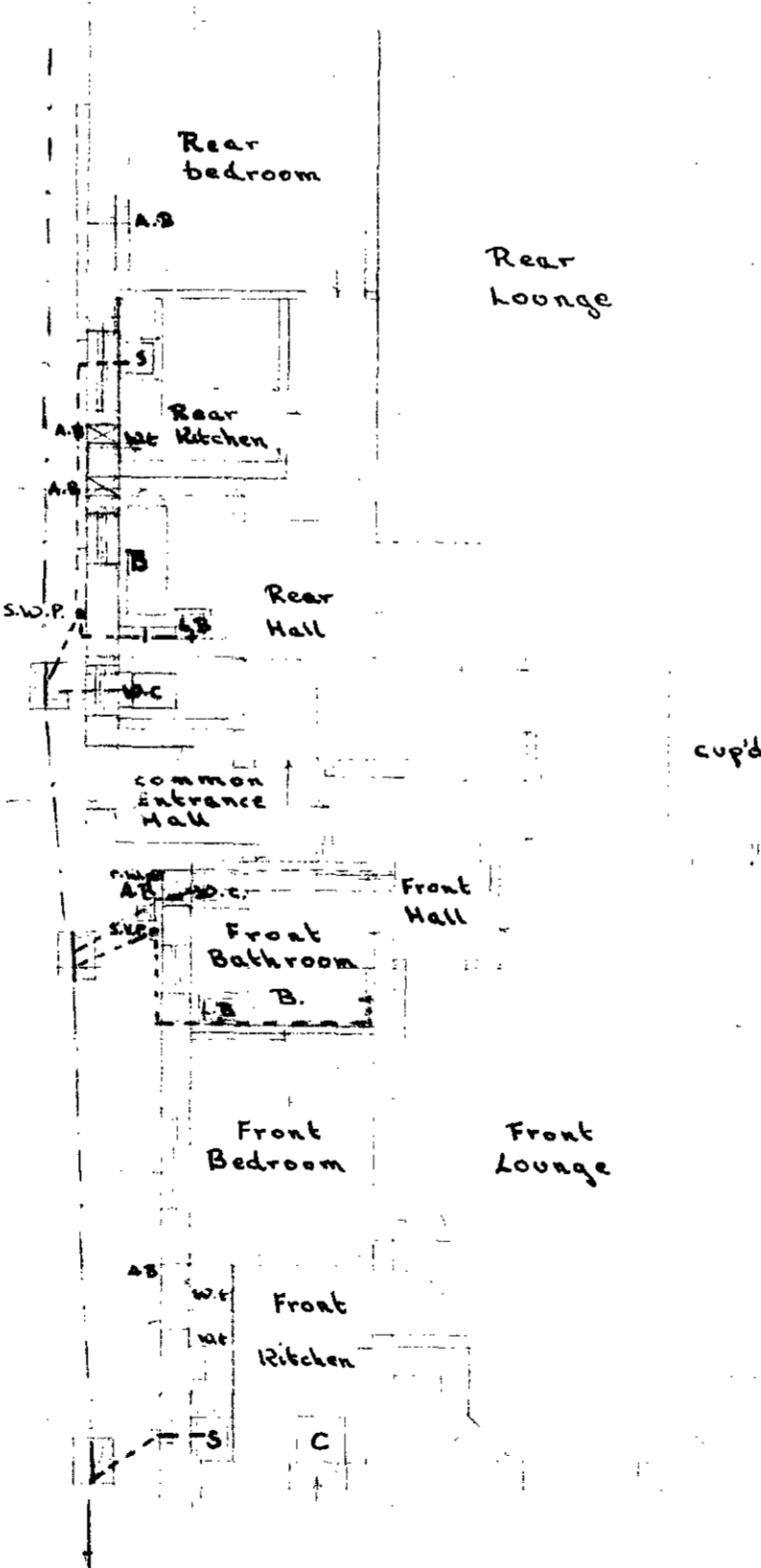


Copyright Reserved.
Site Plan Scale 1:2500.



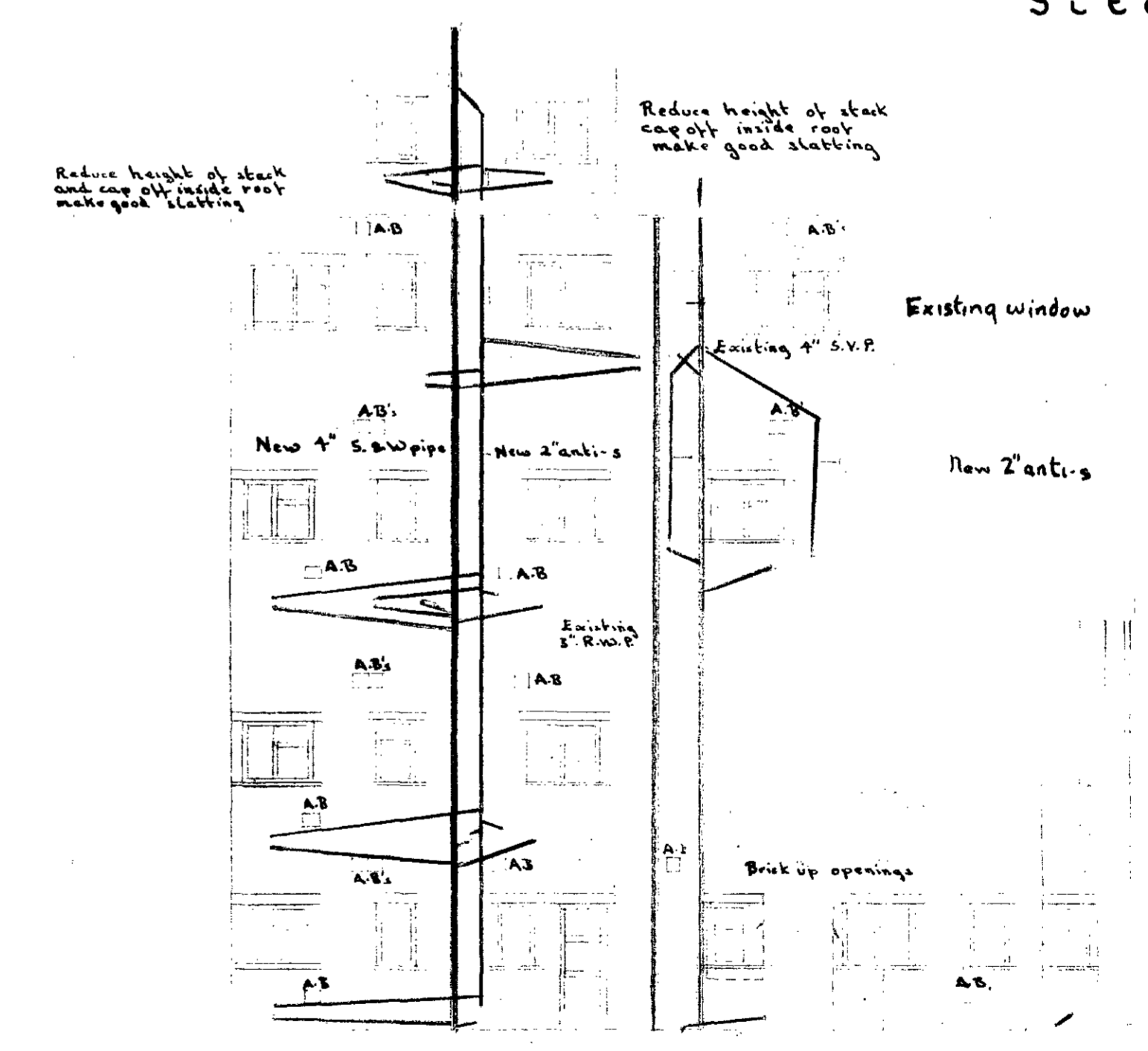
GROUND FLOOR.

- New door and frame in new breeze partition
- New 4'0" x 3'6" standard wooden window
- Ventilated food cupboard
- 9"x9" trunking to ventilate lobby
- New 2'1/4" x 3'6" standard wooden window
- Reform existing manhole
- New 2'1/4" x 3'6" standard wooden window
- New breeze partition with standard 5/16" entrance doors
- New 2'8" x 6'8" Common Entrance door
- Block up existing opening
- Reform existing manhole
- New 2'1/4" x 3'6" standard wooden window
- New breeze partition
- Remove wall form beam to support floor above
- New 4'0" x 3'6" standard wooden window
- New 2'1/4" x 3'6" standard wooden window
- New 2'1/4" x 3'6" standard wooden window
- New 4" drain
- Reform existing manhole



BASEMENT

- New door and frame in new breeze partition
- Remove staircase to ground floor and form breeze partitions to form cupboards
- 9"x9" trunking to ventilate lobby
- Form new breeze partition to form lobby
- Form new door opening
- Block up existing opening



FLANK ELEVATION

LONDON BOROUGH OF CAMDEN
PRESENTED TO THE PLANNING AND DEVELOPMENT COMMITTEE APPLICATIONS SUB-COMMITTEE ON 9 AUG 1967

GTP/G8/11/3/3914

Scale; 1 inch to 8 feet.
Drawing Number 1
July 1966

59 BELSIZE PARK GARDENS, HAMPSTEAD, N.W.3.
PROPOSED CONVERSION INTO EIGHT FLATS
FOR THE CHURCH COMMISSIONERS FOR ENGLAND

LONDON BOROUGH OF CAMDEN
PRESENTED TO THE PLANNING AND DEVELOPMENT COMMITTEE APPLICATIONS SUB-COMMITTEE ON 9 AUG 1967

Cluttons,
Chartered Surveyors,
5, Great College Street,
Westminster, S.W.1.