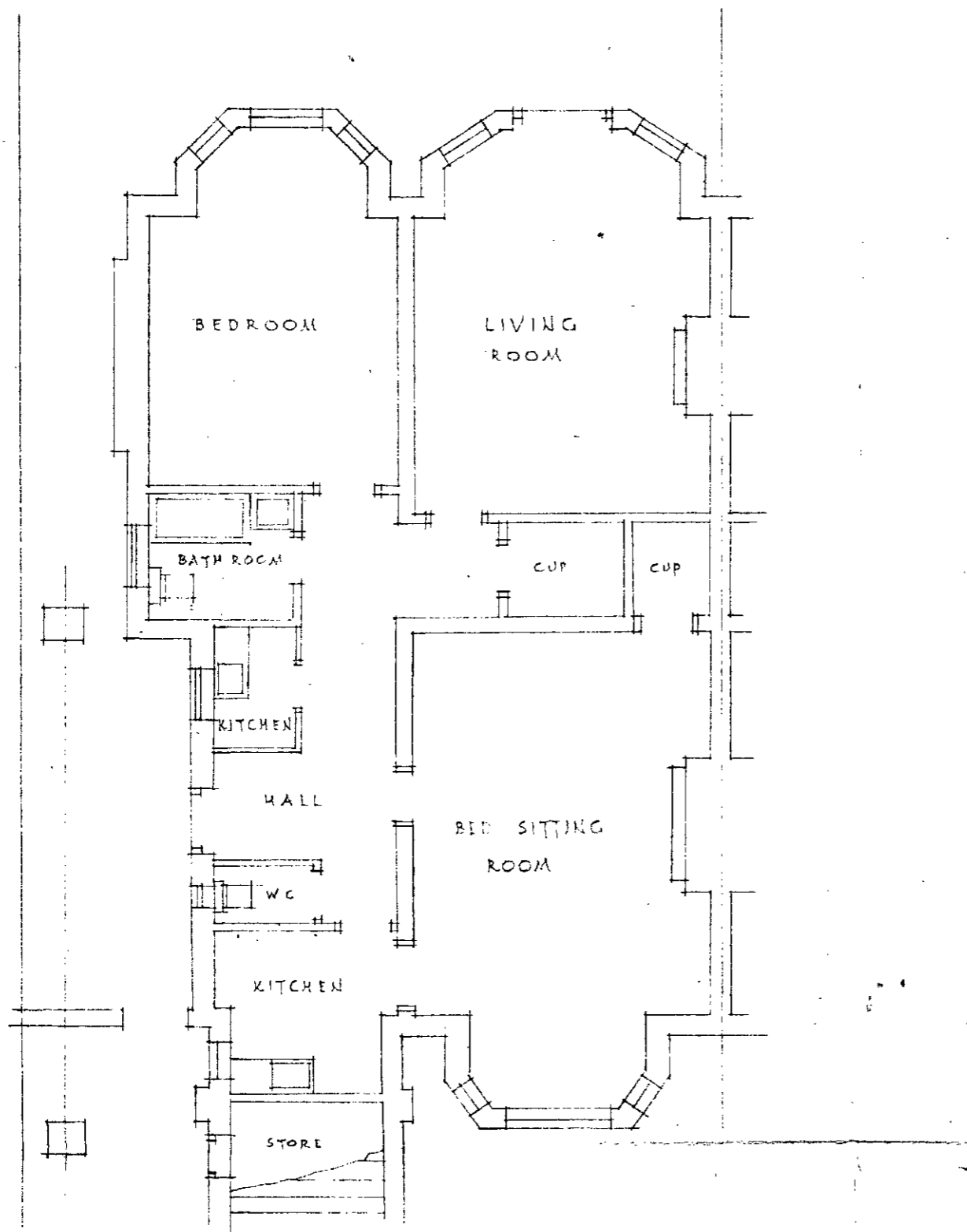
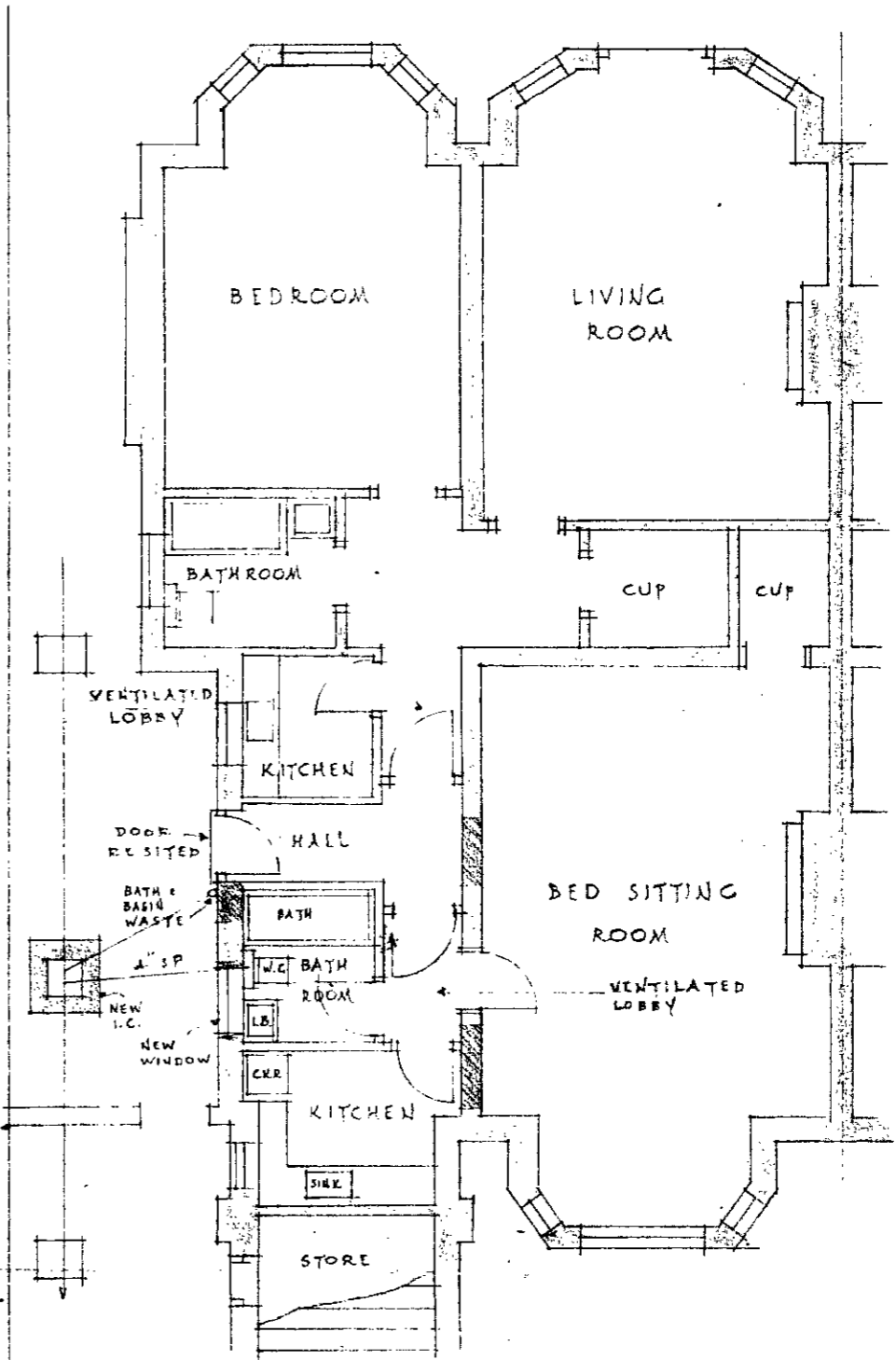


NO. 17 LANCASTER GROVE, N.W. 3
 PROPOSED ALTERATIONS TO LOWER GROUND FLOOR

SCALE: EIGHT FEET TO ONE INCH

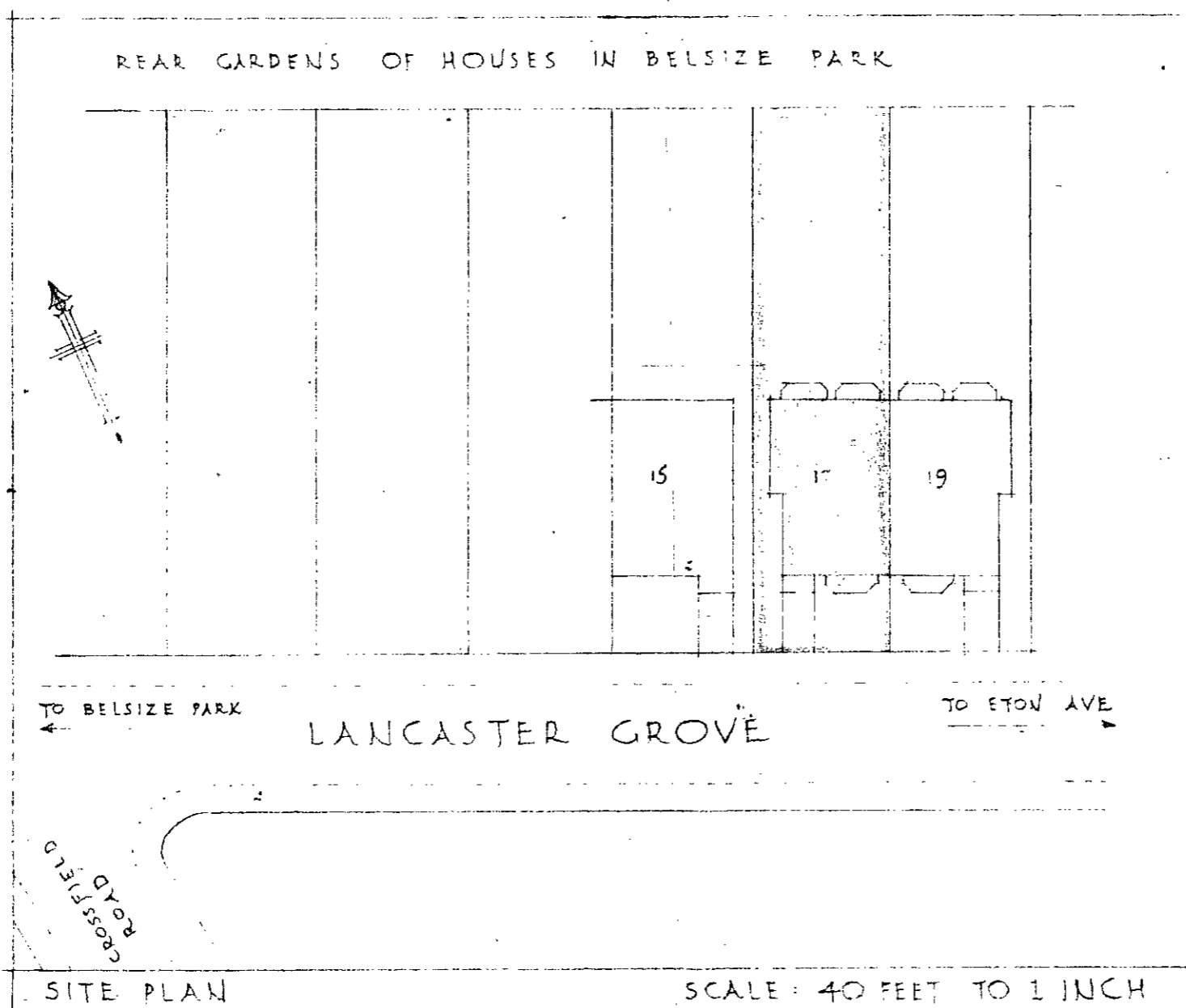


EXISTING LOWER GROUND FLOOR



PROPOSED LOWER GROUND FLOOR

CTP/G7/16/11/13584



SITE PLAN

SCALE: 40 FEET TO 1 INCH

LONDON BOROUGH OF CAMDEN
 PLANS APPROVED
~~DISAPPROVED~~
 11 JUL 1972
 ON BEHALF OF THE COUNCIL

A.E. MOFFATT A.I.A.S
 44 BIRLEY ROAD N.20