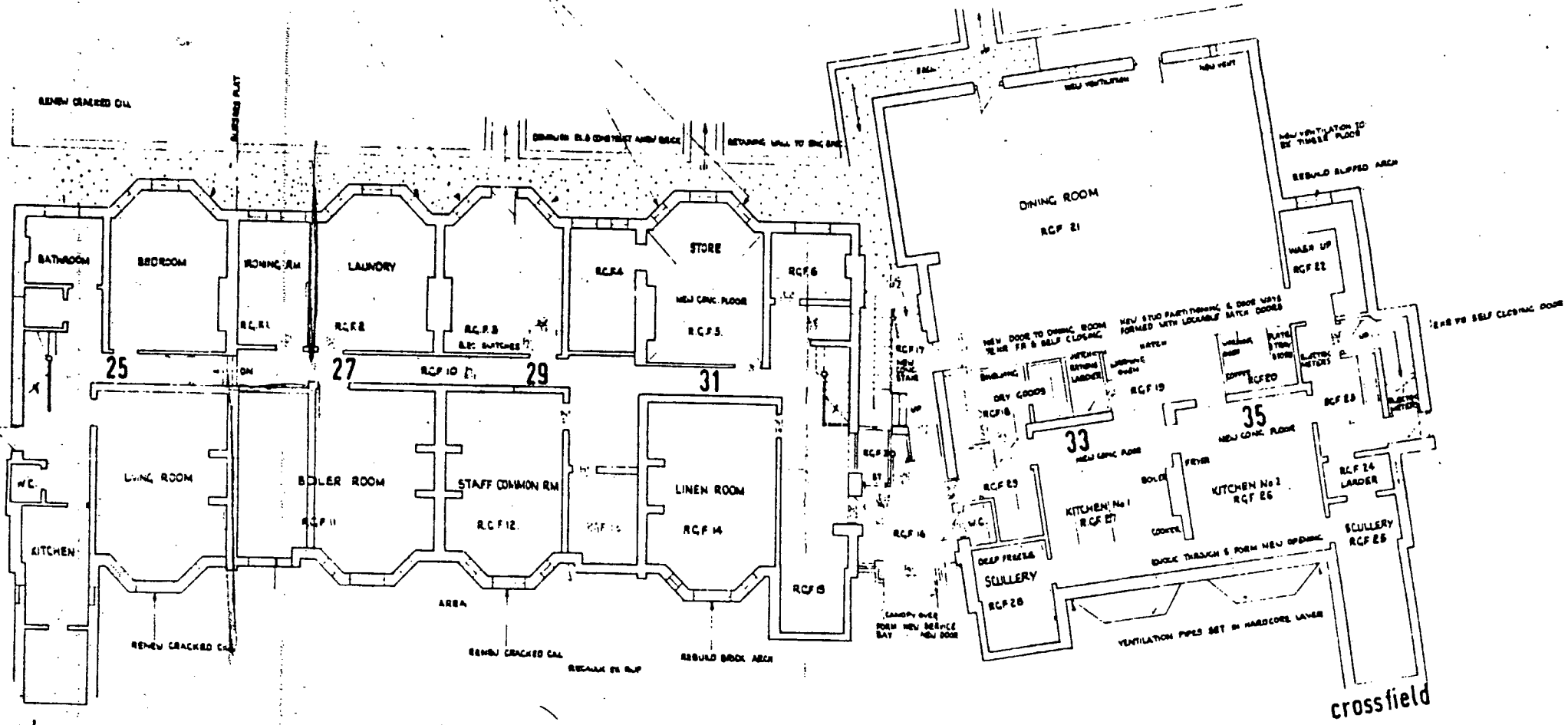


TAKE OUT EX BRICK ARCHES AND REBUILD TO MATCH 24



LONDON BOROUGH OF CAMDEN
TOWN AND COUNTRY PLANNING ACTS
24 JUN 1982
PLANS NOT APPROVED
ON BEHALF OF THE COUNCIL

CTP 97/13/A/34133

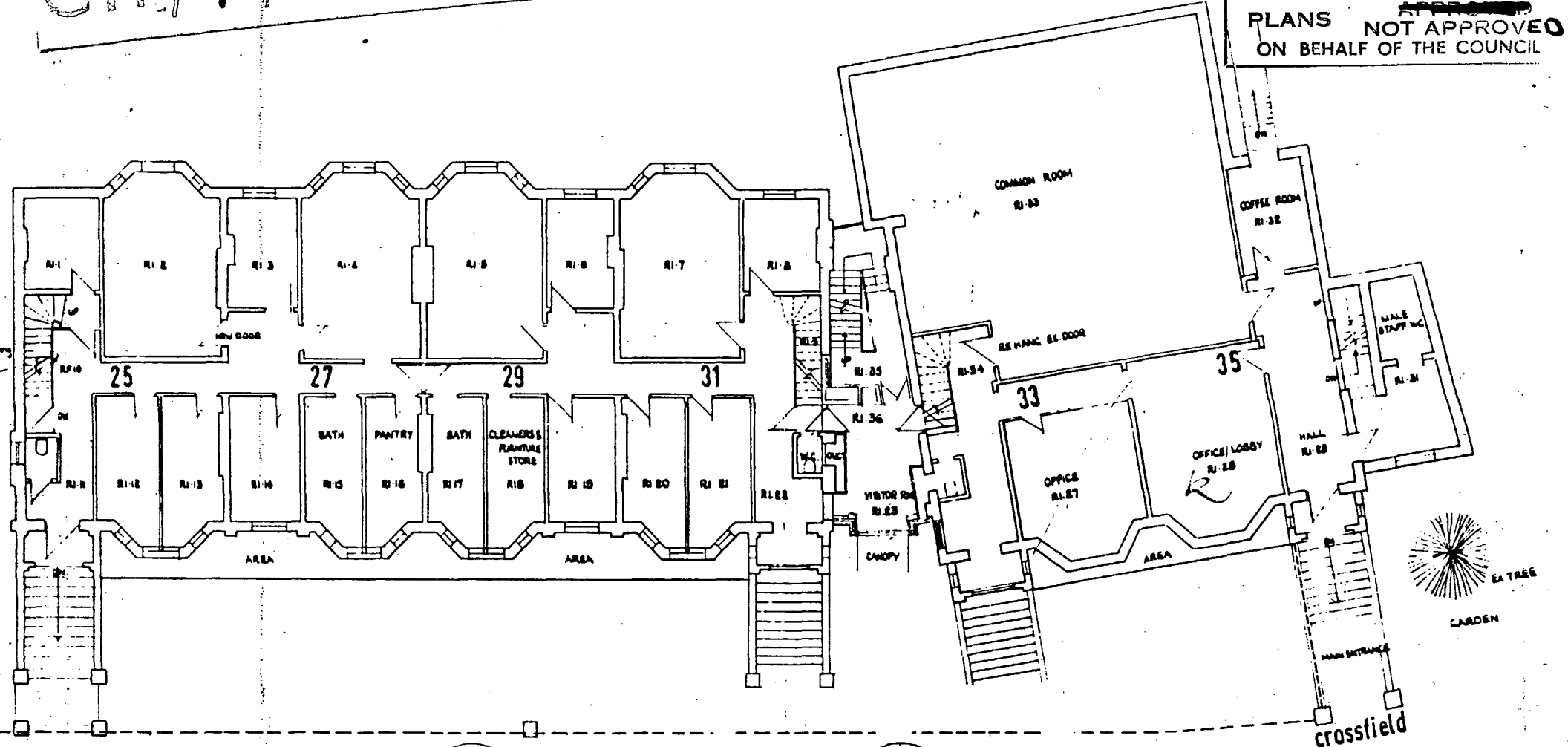
GARDEN FLOOR PLAN

AMENDED SCHEME
BEDFORD COLLEGE
LINSELL HALL INFILL
DATE 23 5 78
REF 61/478/L01A

Cusdin Burden and Howitt
1-4 Greenwich Place Fenchurch London SE17 2TB Telephone 01 329 2511

CTP/97/13/A/34/33

LONDON BOROUGH OF CAMDEN
 TOWN AND COUNTRY PLANNING ACTS
 24 JUN 1982
 PLANS NOT APPROVED
 ON BEHALF OF THE COUNCIL



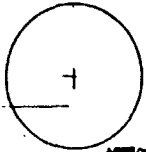
adamson

POSITION OF SECURITY FENCE TO BE ERECTED BY CONTRACTOR
 PAVEMENT



APPROX POSITION EI TREE

PAVEMENT



APPROX POSITION OF EXISTING PLANNING CHERRY TREE

ADAMSON ROAD

crossfield

FIRST FLOOR PLAN

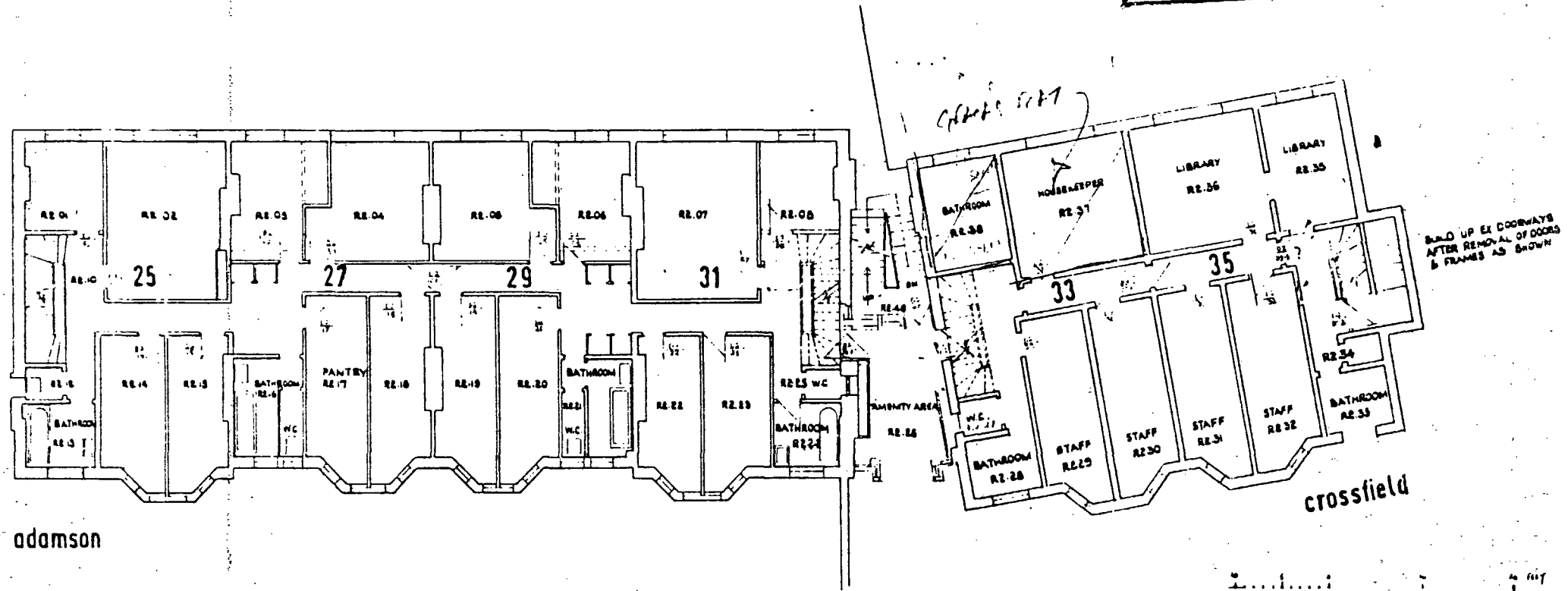
AMENDED SCHEME
 BEDFORD COLLEGE
 LINDSELL HALL INFILL

Scale 1/500
 Date 26.5.72
 No 61/470-102A

Cusdin, Burden and Howitt

CTP/47/13/A/34133

LONDON BOROUGH OF CAMDEN
TOWN AND COUNTRY PLANNING ACTS
24 JUN 1982
PLANS NOT APPROVED
ON BEHALF OF THE COUNCIL



adamson

crossfield

AMENDED SCHEME
BEDFORD COLLEGE
LINSELL HALL INFILL

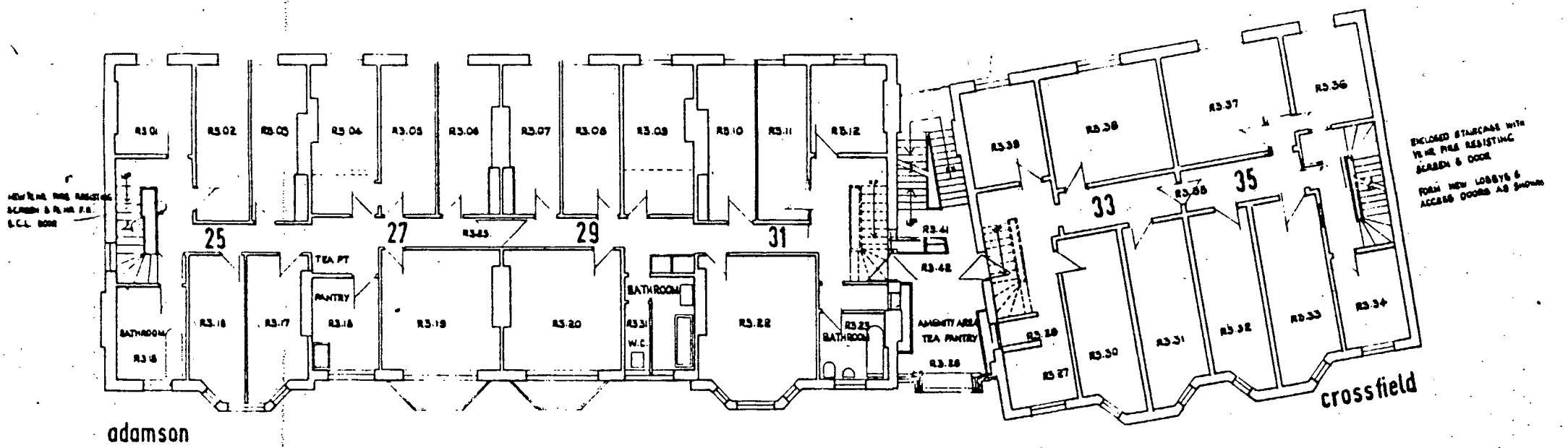
Scale 1/8" = 1'-0" 600 00 61.478.103A
date 24.5.78.

Cusdin Burden and Howitt
1-4 Barnwell Place, Pentonville, London, N1 7 3JH Telephone 01-461 6641

2nd FLOOR PLAN

CTP/97/13/A/34133

LONDON BOROUGH OF CAMDEN
TOWN AND COUNTRY PLANNING ACTS
24 JUN 1982
PLANS NOT APPROVED
ON BEHALF OF THE COUNCIL



adamson

crossfield

ENCLOSED STAIRCASE WITH
1/2 HR FIRE RESISTING
SCREEN & DOOR
FROM NEW LOBBYS &
ACCESS DOORS AS SHOWN

AMENDED SCHEME
BEDFORD COLLEGE
LINSSELL HALL INFILL

scale 1/8" = 1'-0"
date 26.5.72
61/478.104A

Cusdin Burden and Howitt
1-4 Barnwell Place, Finsbury Park, London N11 3JZ
Tel: 01-437 6331

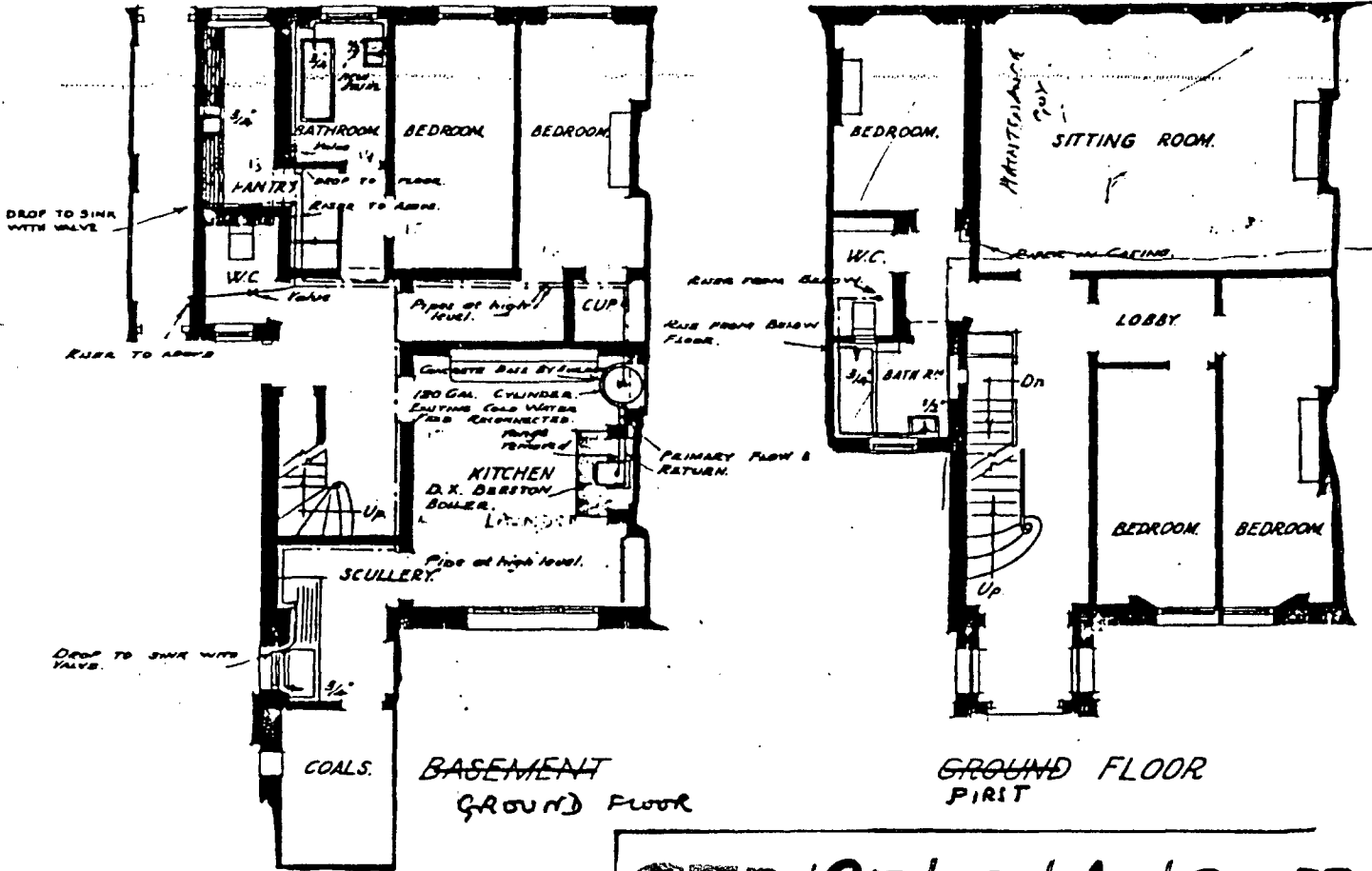
3rd FLOOR PLAN

N^o 17 BUCKLAND CRESCENT N.W.3.

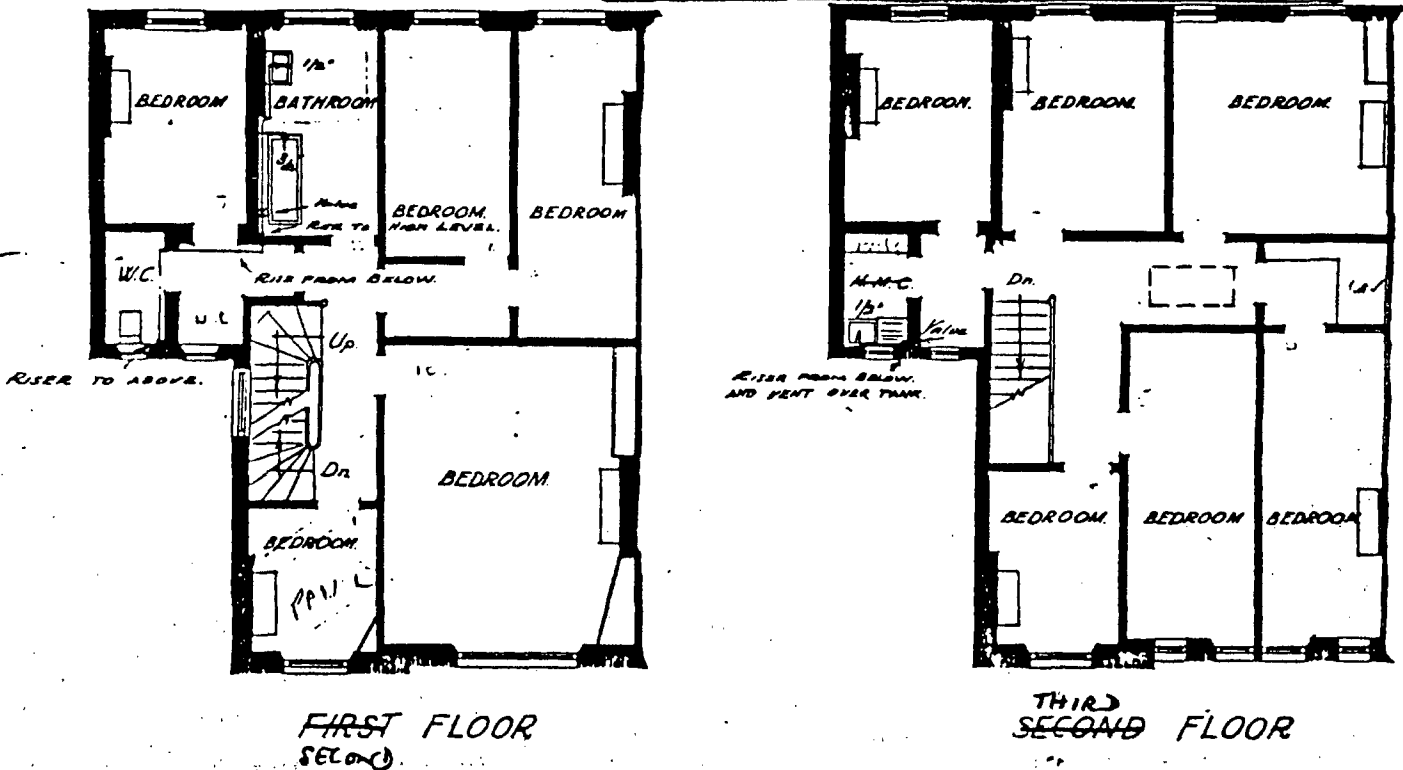
Proposed New Hot Water System and Minor Alterations, for 24 JUN 1982
 THE COUNCIL OF BEDFORD COLLEGE FOR WOMEN.

LONDON BOROUGH OF CAMDEN
 TOWN AND COUNTRY PLANNING ACTS

PLANS NOT APPROVED
 ON BEHALF OF THE COUNCIL



CTP/97/13/A/34133



L.E. WARD, F.S.I. ARCHT
 19 DEVEREUX COURT
 STRAND, W.C.2.