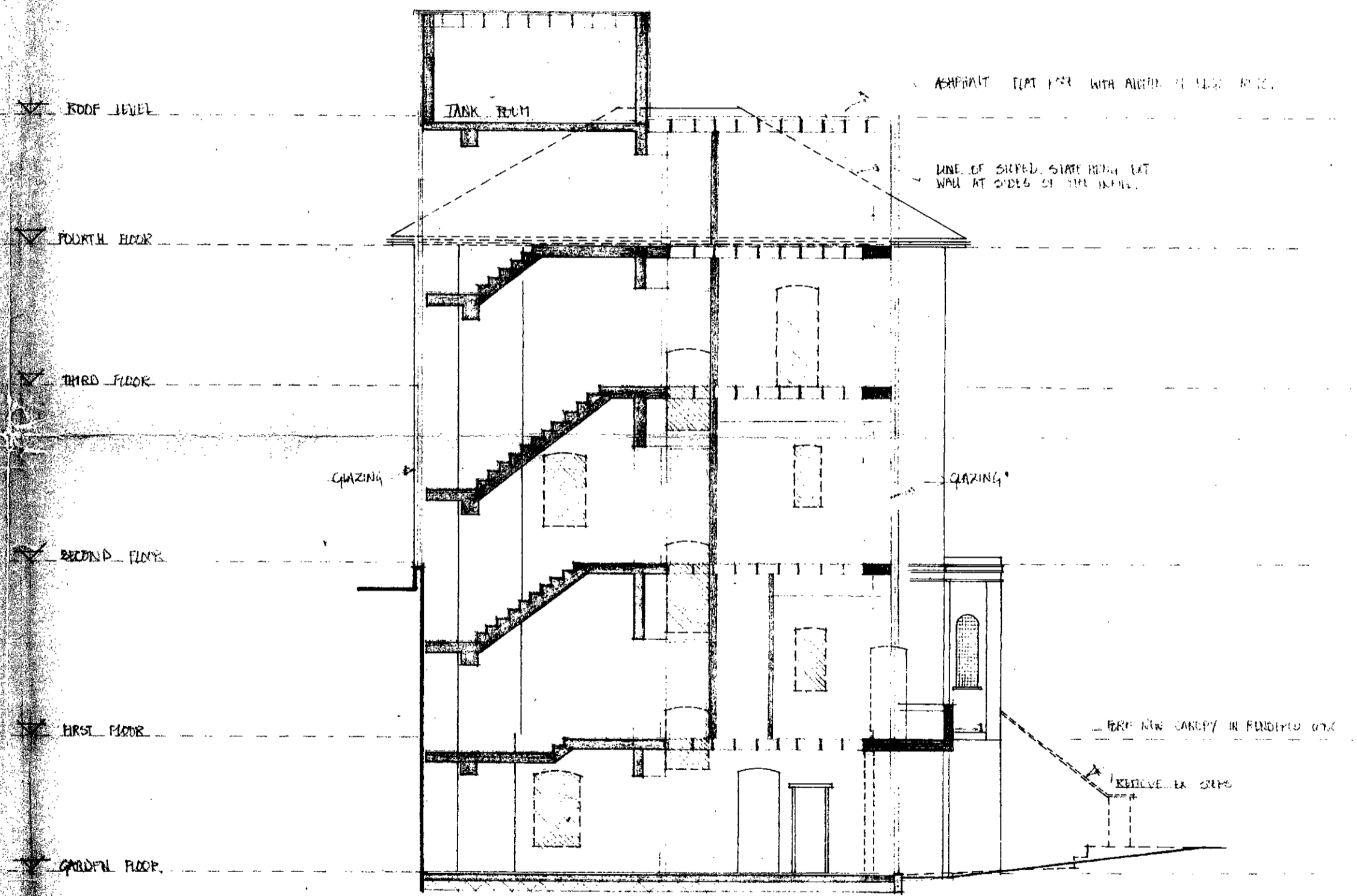


SECTION THRO' A-A



SECTION THRO' B-B

CTP/G7/13/A/12787

**BEDFORD COLLEGE
LINSELL HALL INFILL**

scale 1/8" TO 1'-0" dwg no 61/478/08.
date DECEMBER '71.

Cusdin Burden and Howitt Chartered Architects
1-4 Yarmouth Place, Piccadilly, London, W1Y 8JQ. Telephone 01-493 8913