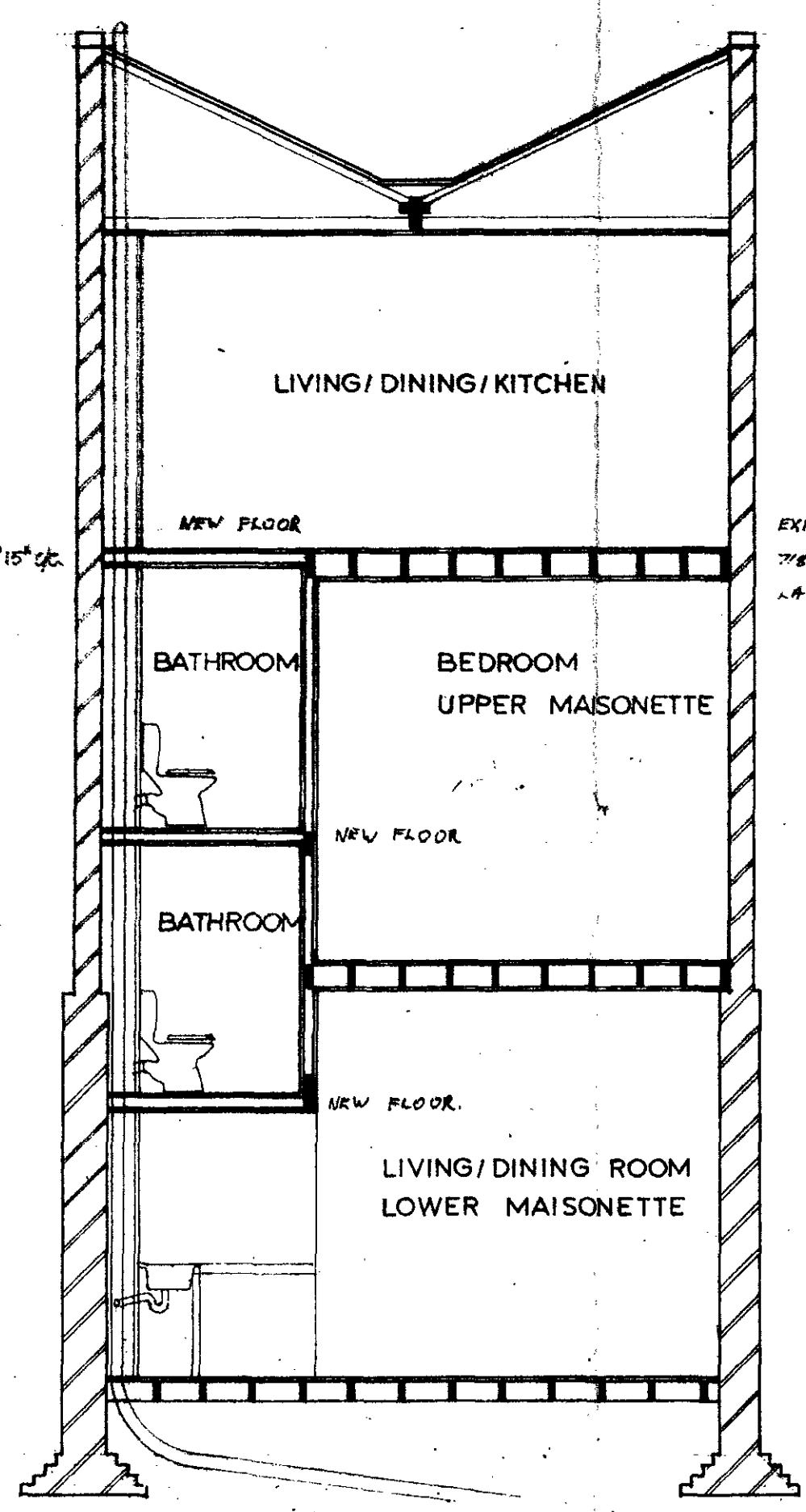


SECTION B.B.



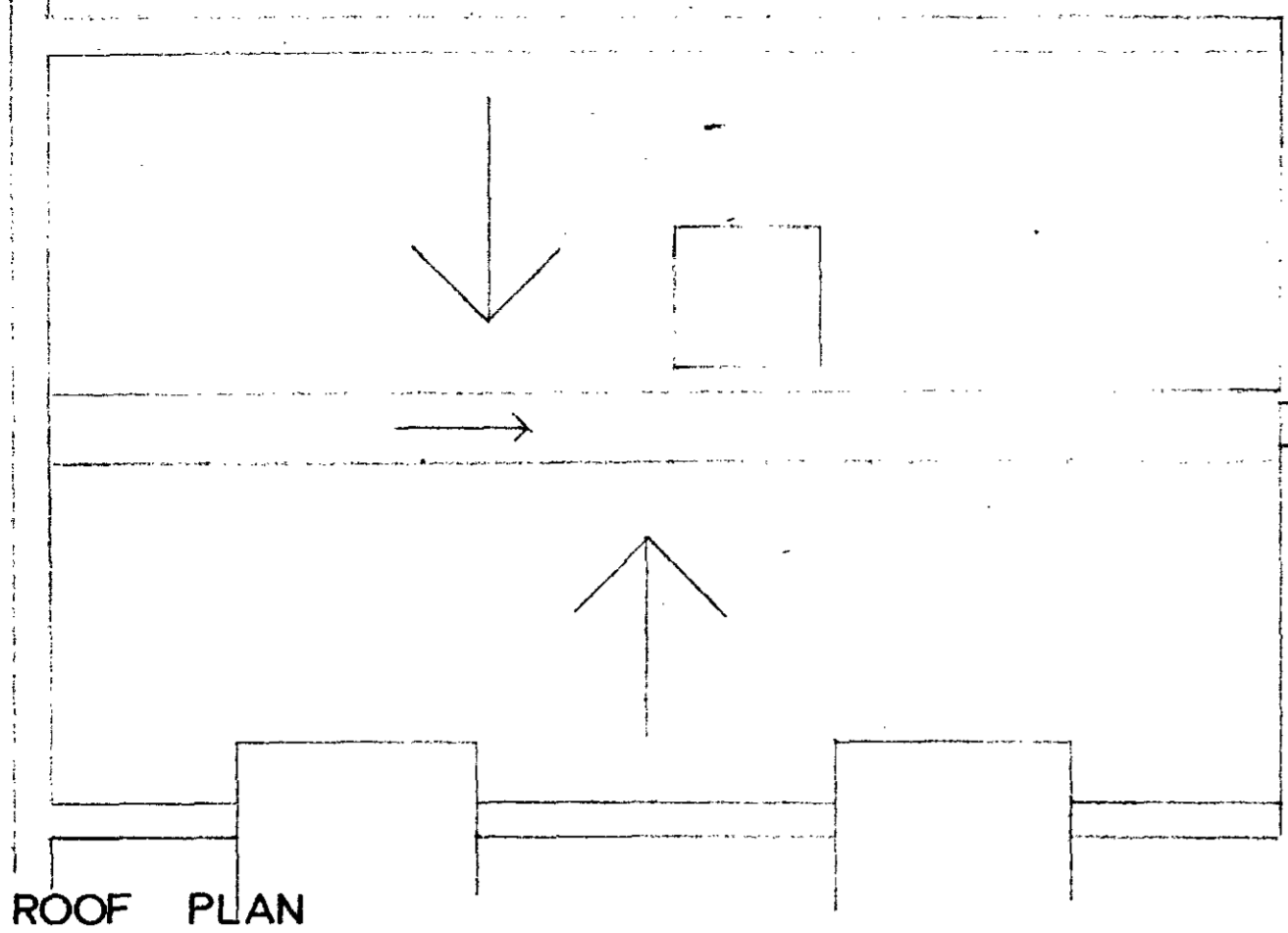
SECTION A.A.

LONDON BOROUGH OF CAMDEN
 PLANS APPROVED
 DISAPPROVED
 7 JAN 1969
 ON BEHALF OF THE COUNCIL

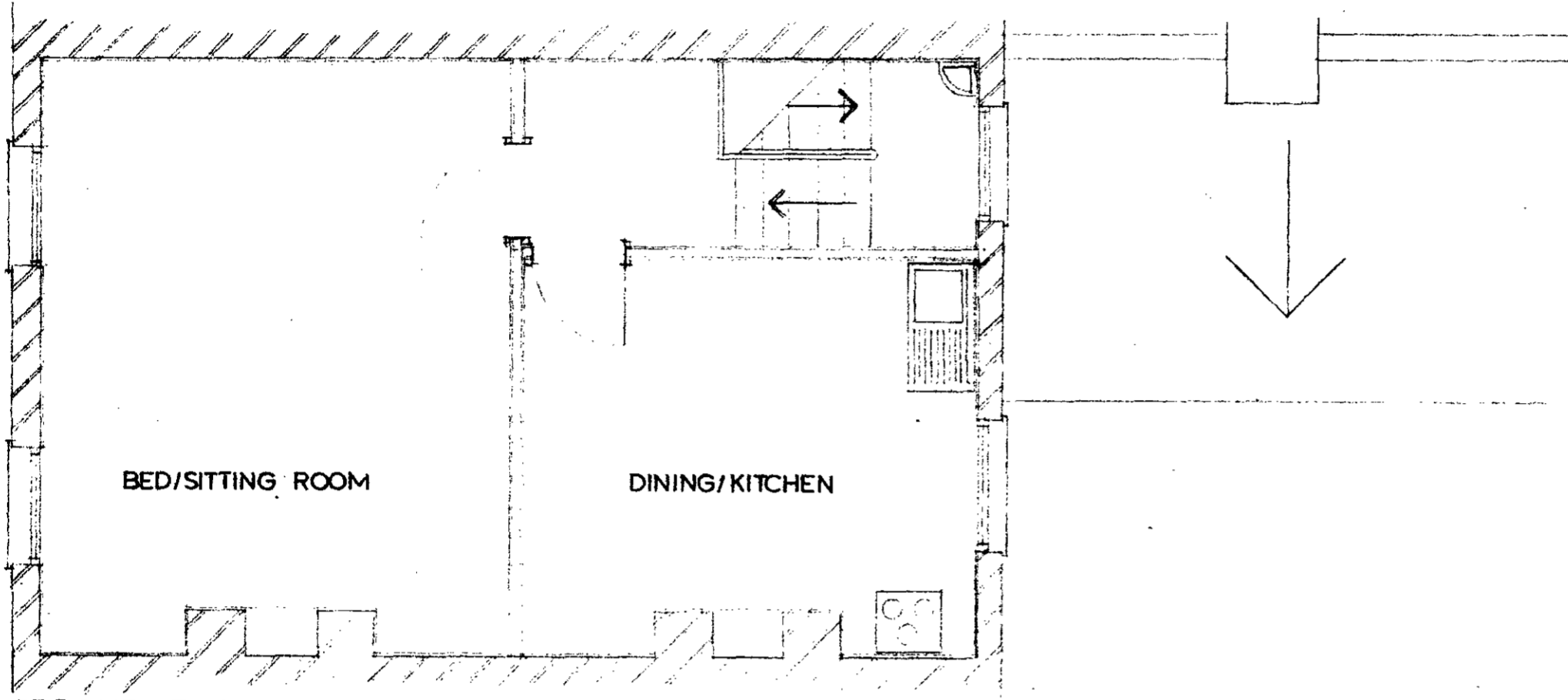
CTP/G10 4/3/6334

CONVERSION
 49 BASSETT ST. NW.5
 P.D. LEDWARD. A.R.I.B.A.
 PROPOSED ALTERATIONS.
 DRG. NO

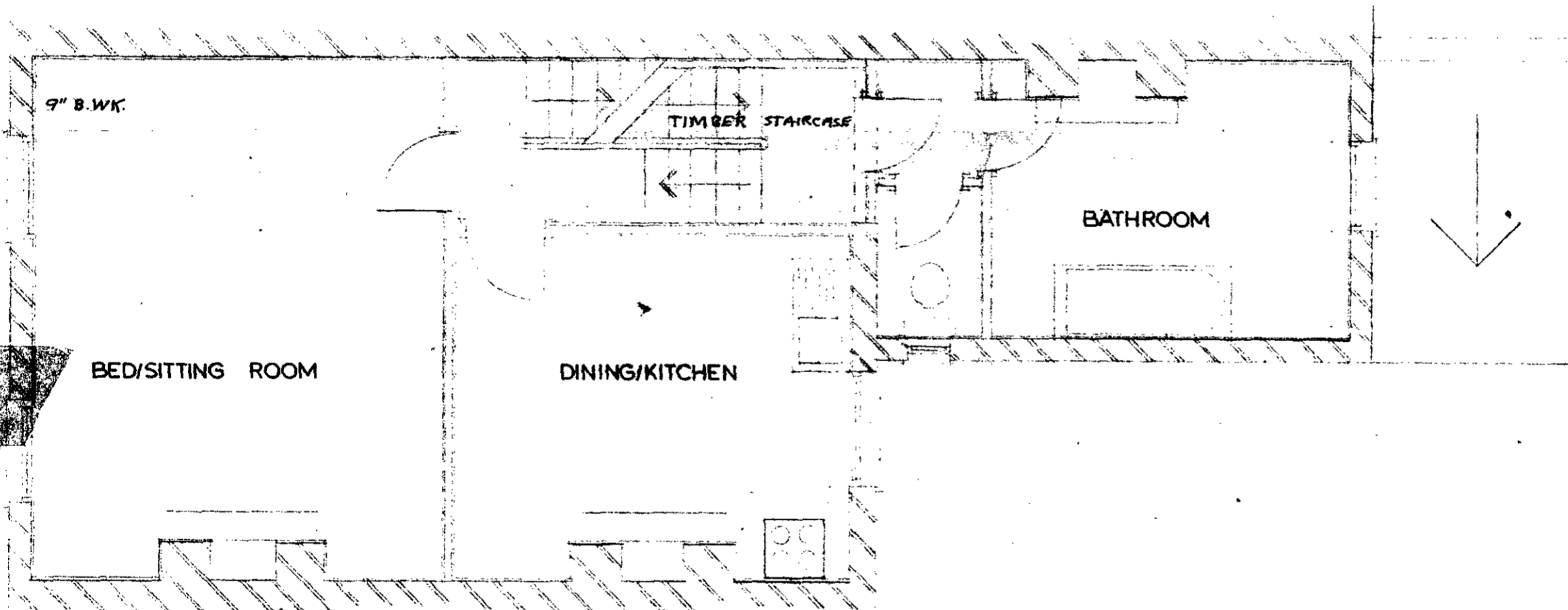
DATE 26/1/68 SCALE 1/4"



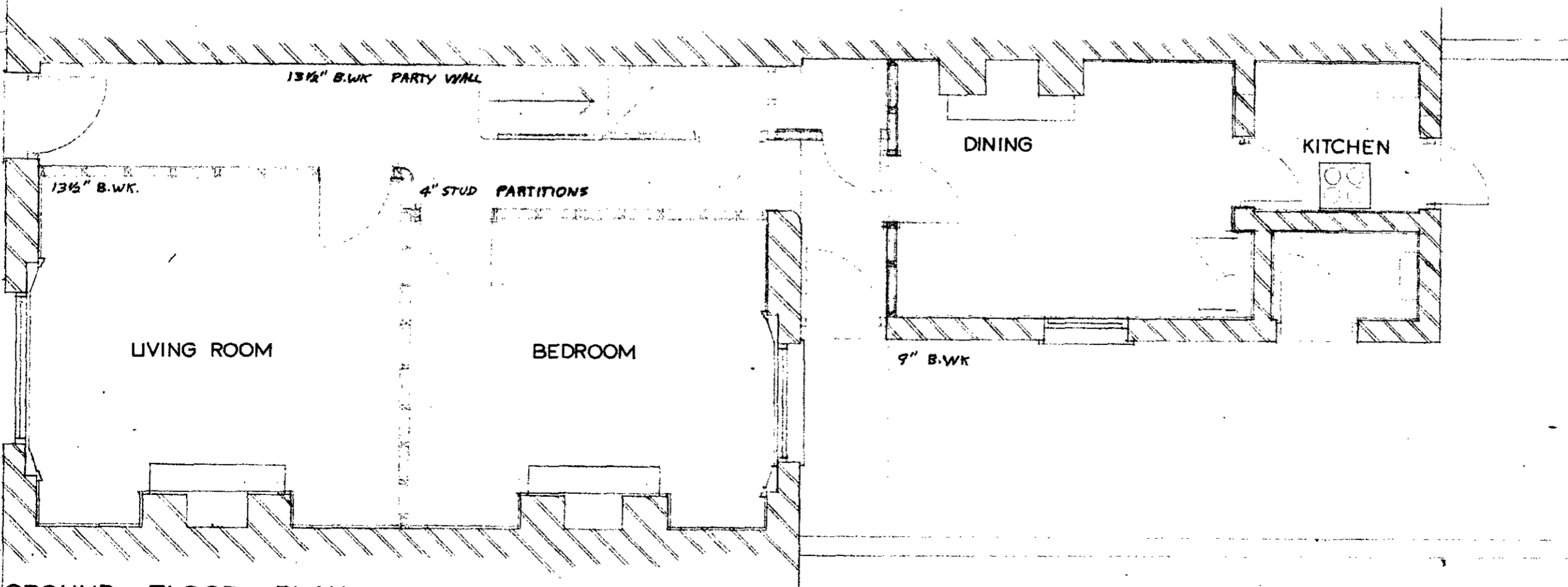
ROOF PLAN



SECOND FLOOR PLAN.



FIRST FLOOR PLAN.

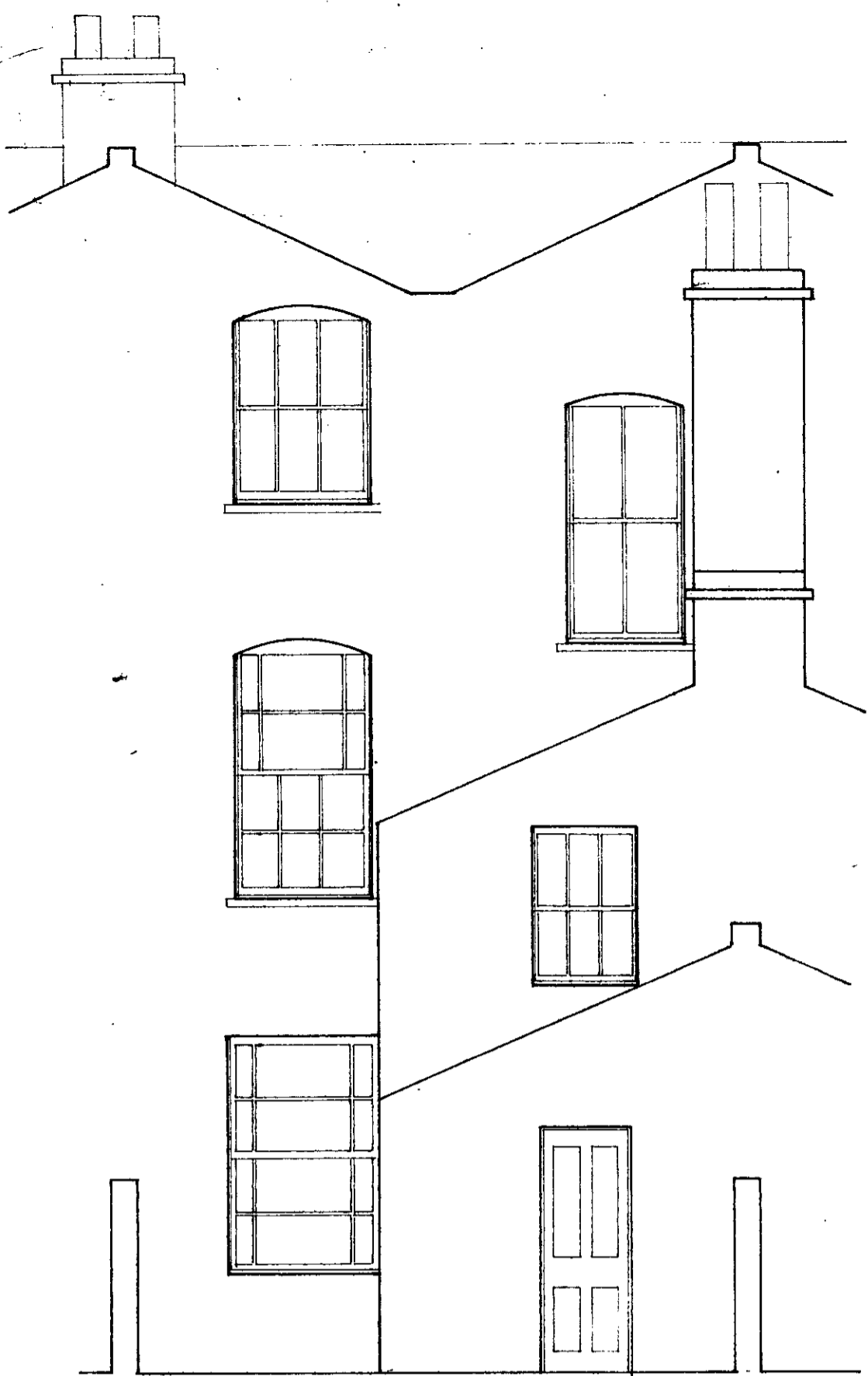


GROUND FLOOR PLAN

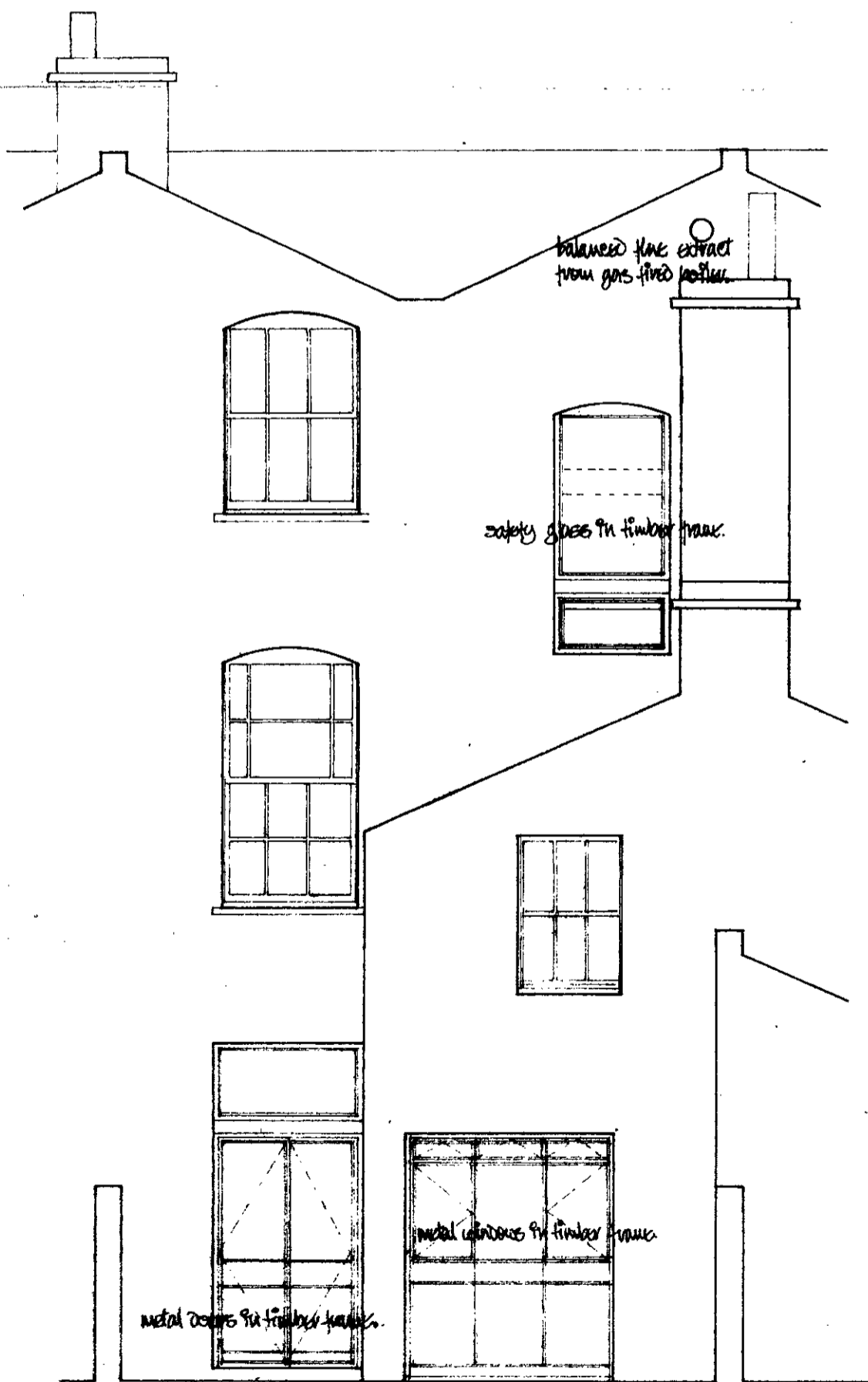
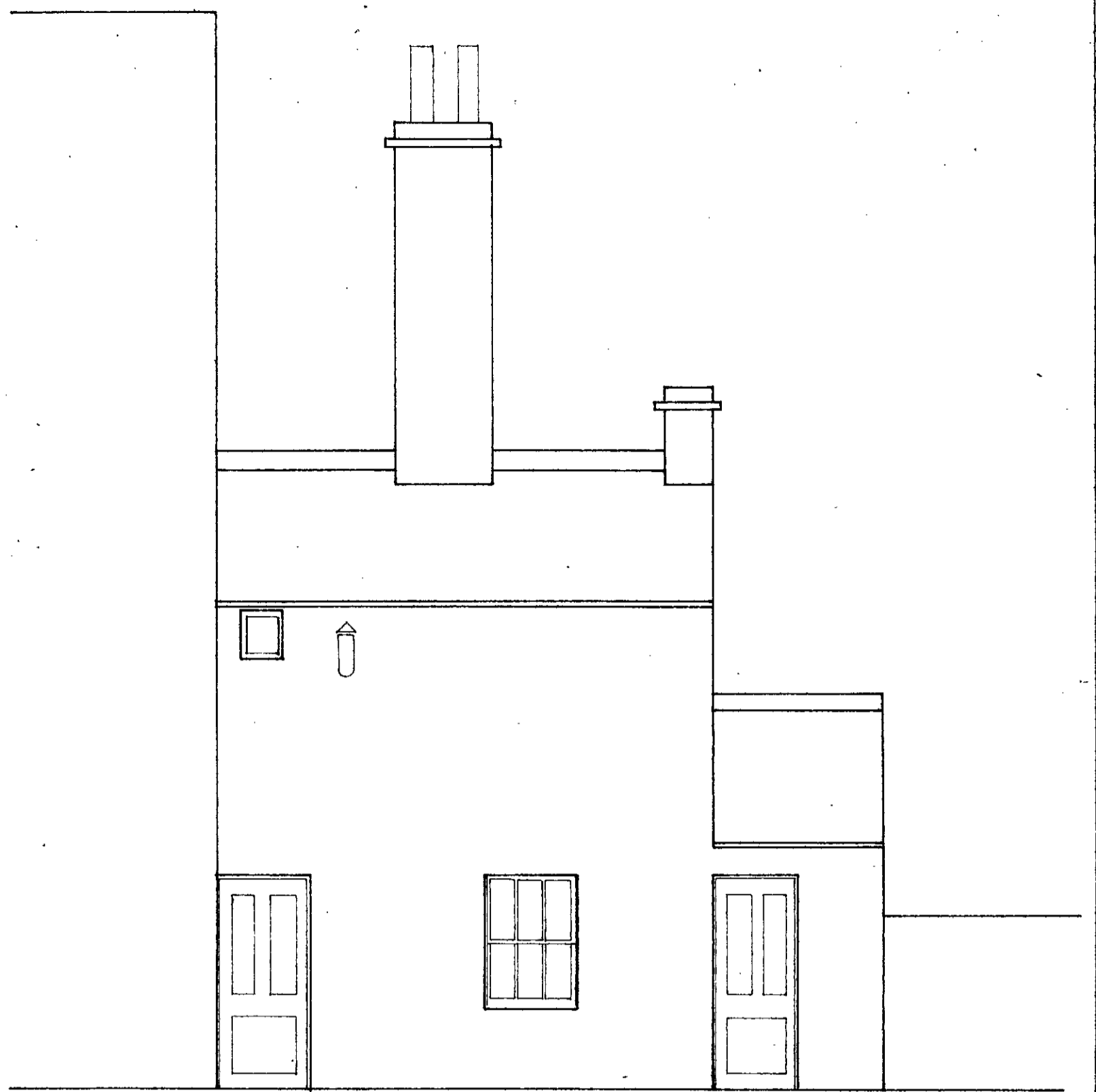
G10 4 3 6344

CONVERSION
 49 BASSETT ST. N.W.5.
 P. D. LEDWARD. A.R.I.B.A.
 AS EXISTING.
 DRG NO

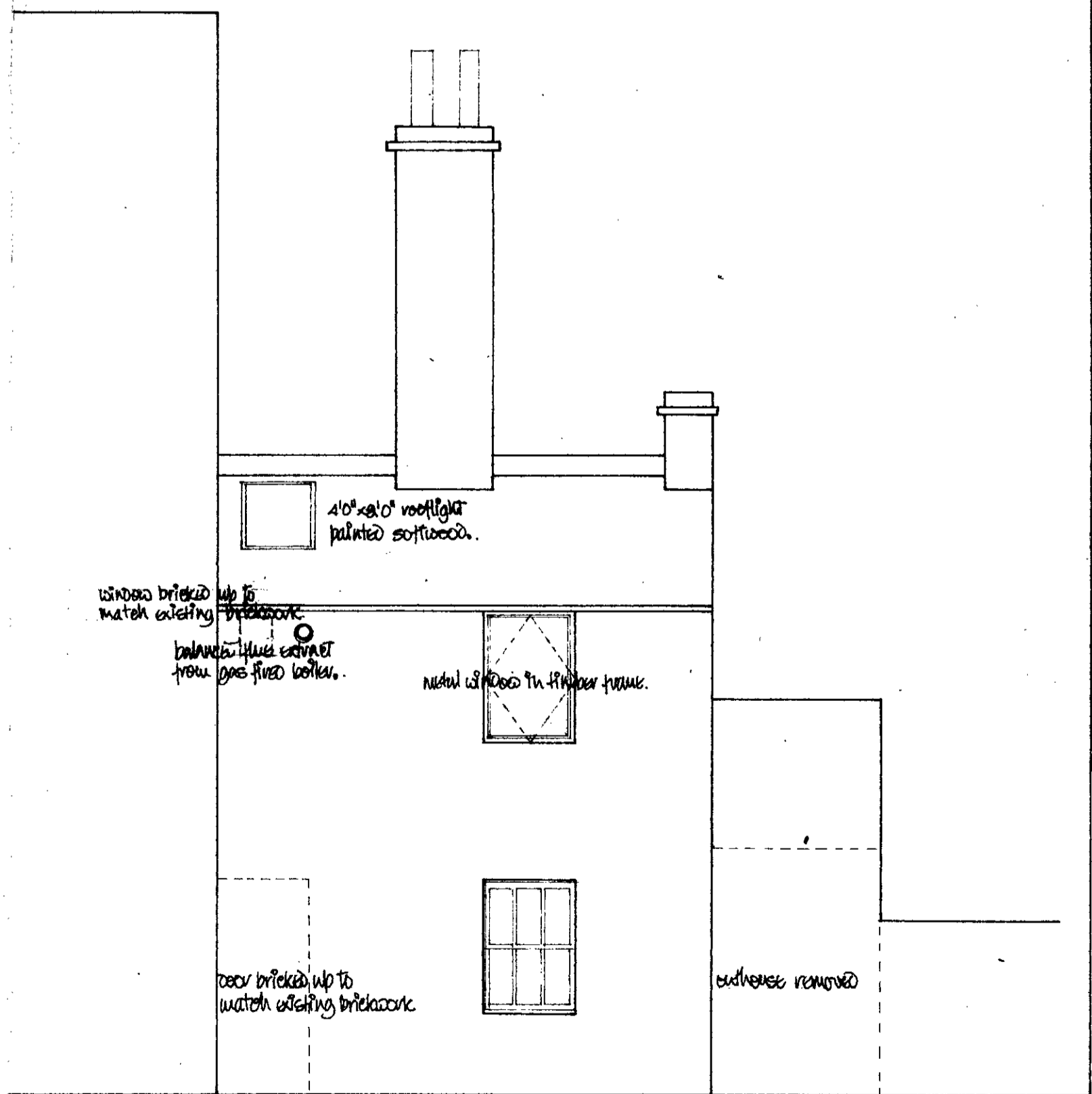
DATE 16/11/68 SCALE 1/4"



ELEVATIONS EXISTING



ELEVATIONS PROPOSED



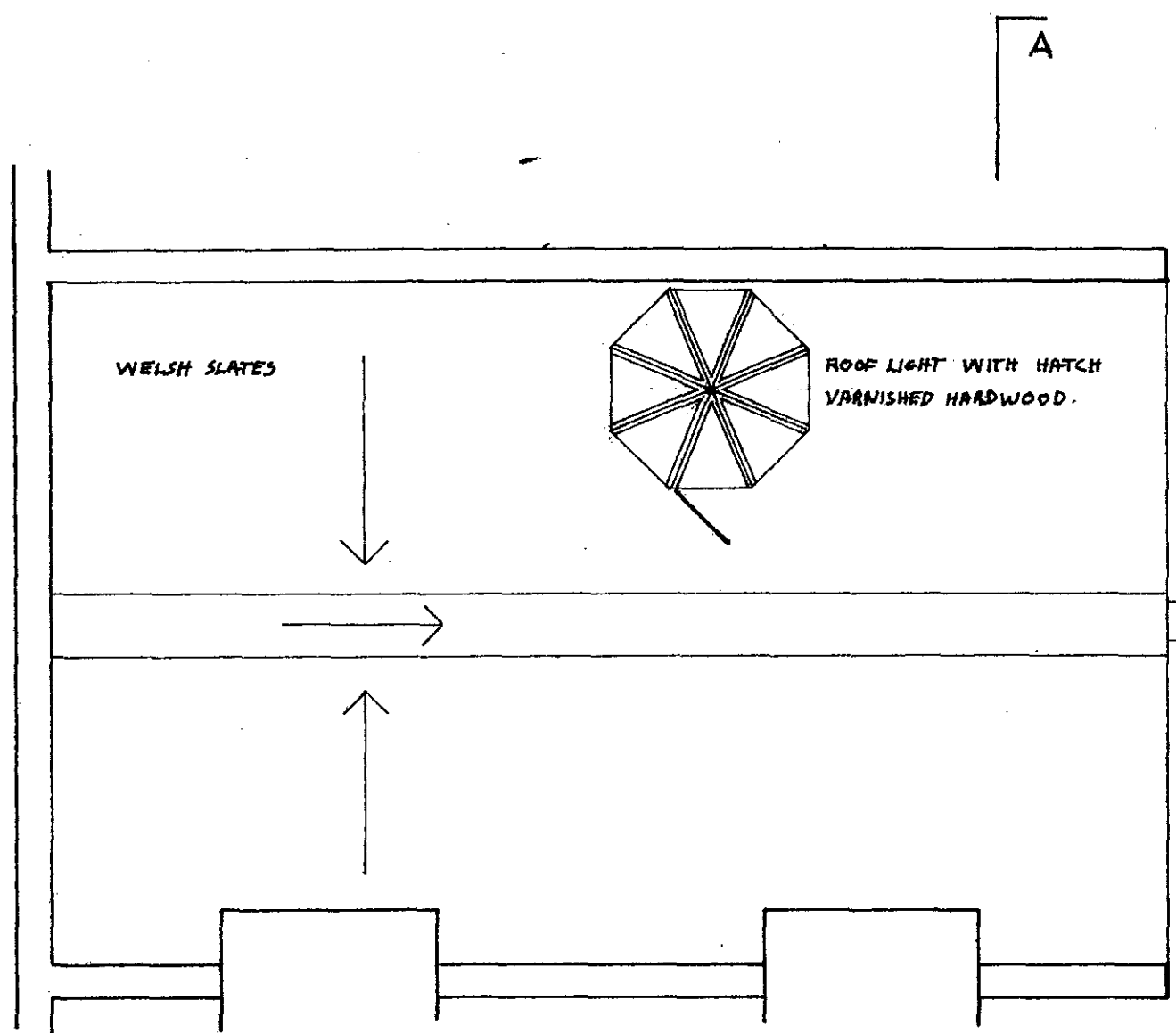
LONDON BOROUGH OF CAMDEN
 APPROVED
 PLANS
 DISAPPROVED
 7 JAN 1969
 ON BEHALF OF THE COUNCIL

GTD/G10/4/3/6344

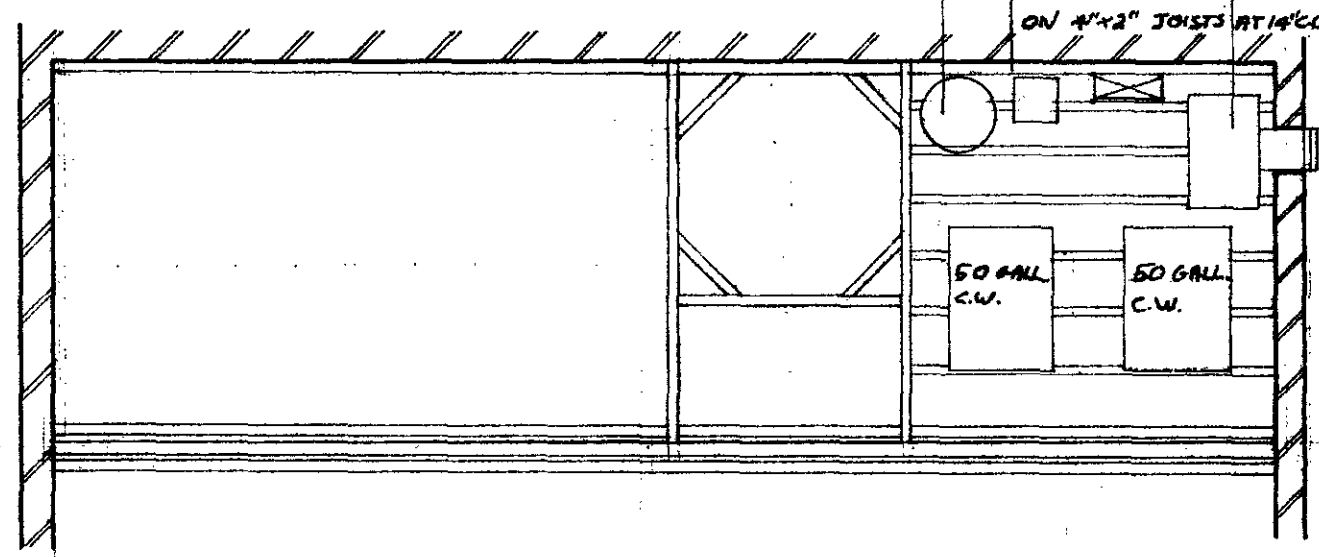
CONVERSION
 49 BASSETT ST. N.W.5.
 P.D. LEDWARD. A.R.I.B.A.
 PROPOSED ALTERATIONS
 DRG. NO.

DATE 16/11/68 SCALE 1/4"

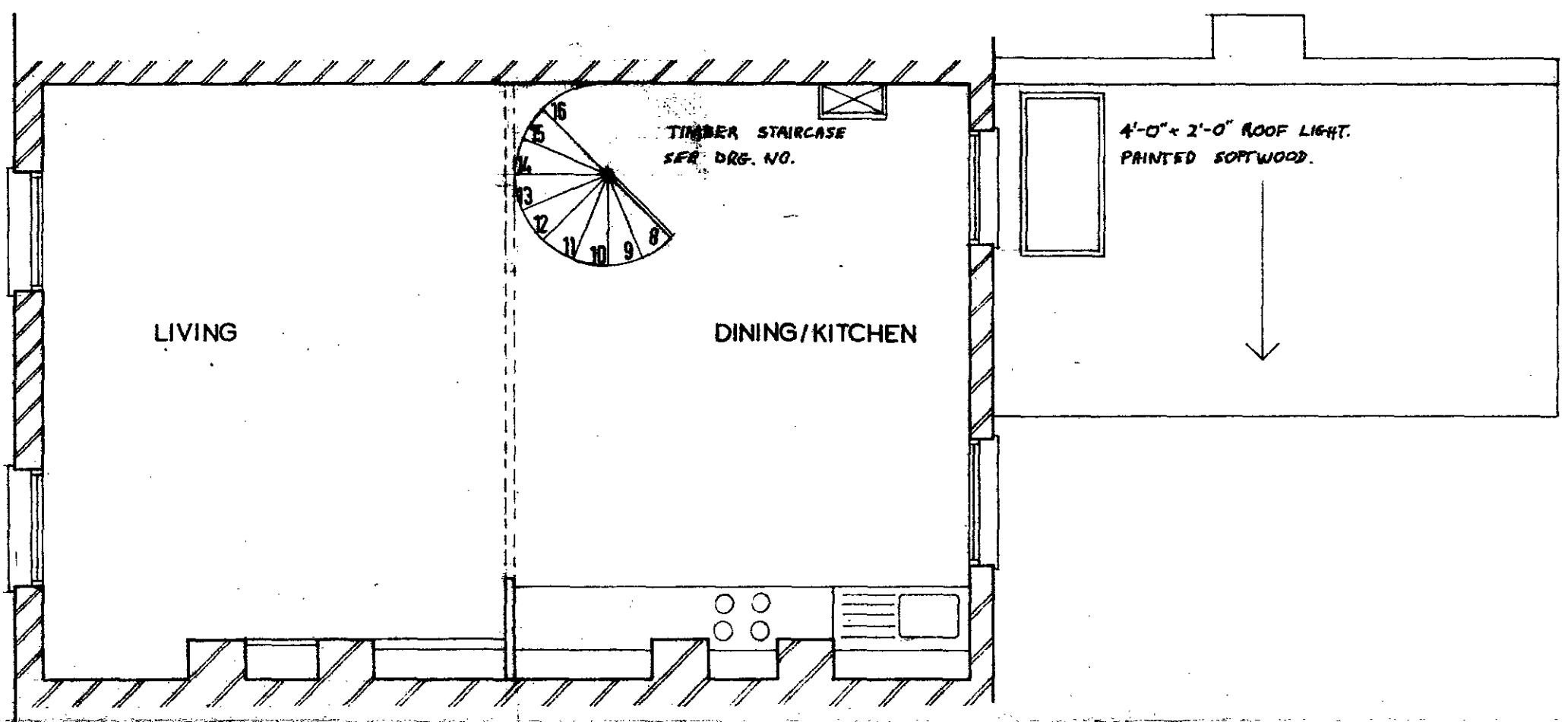
10 GALL. HEADER TANK. 50,000 BTU GAS FIRED BOILER WITH BALANCED FLUE ON 1/2" ASBESTOS SHEET ON 7/8" T&G BOARDS. ON 4"x2" JOISTS AT 16" C/S.



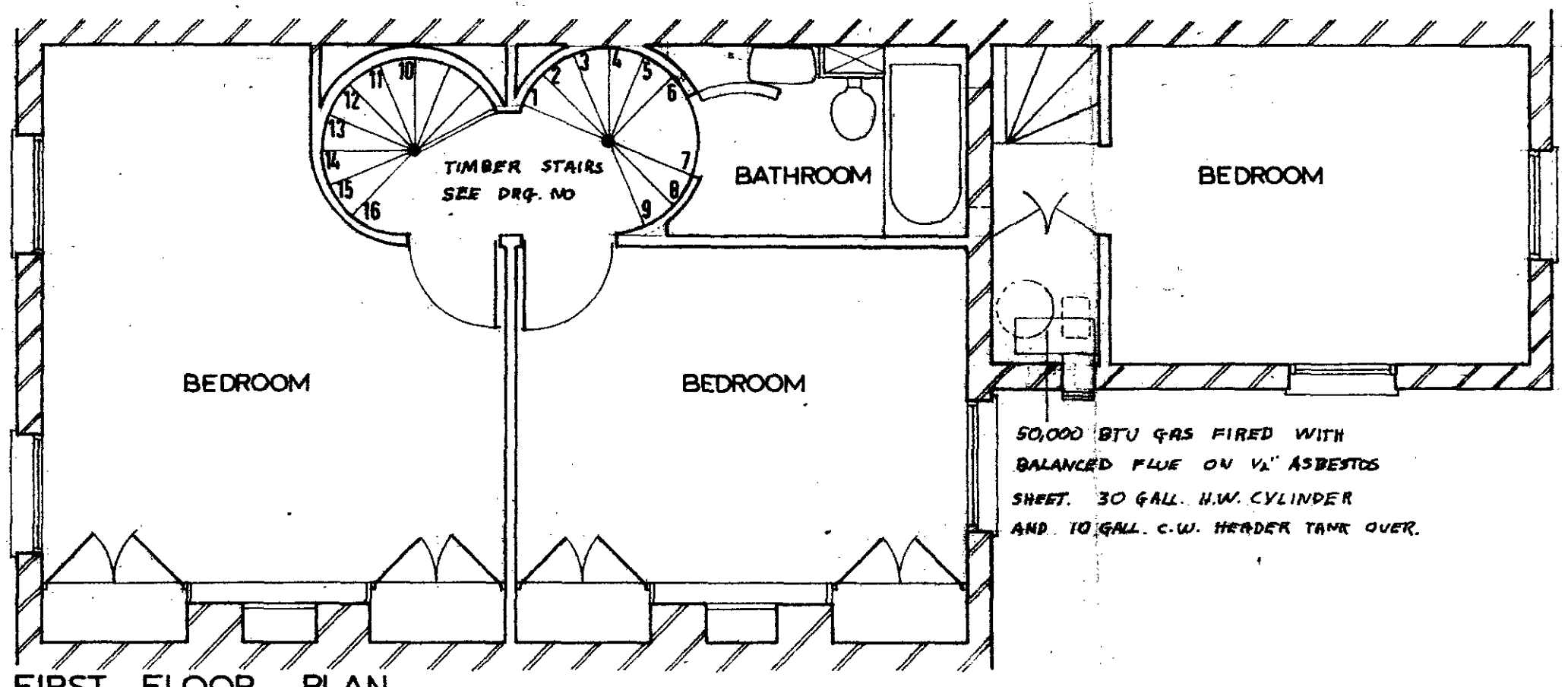
ROOF PLAN



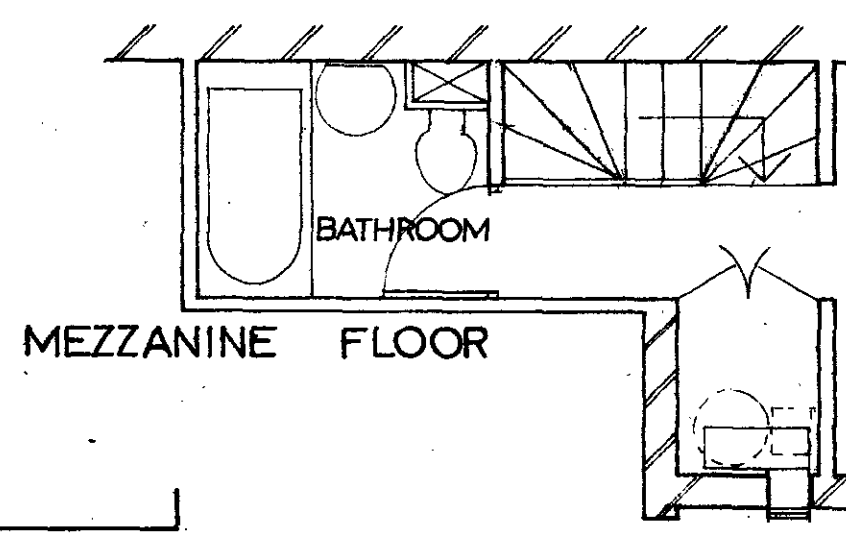
PLAN OF ROOF SPACE.



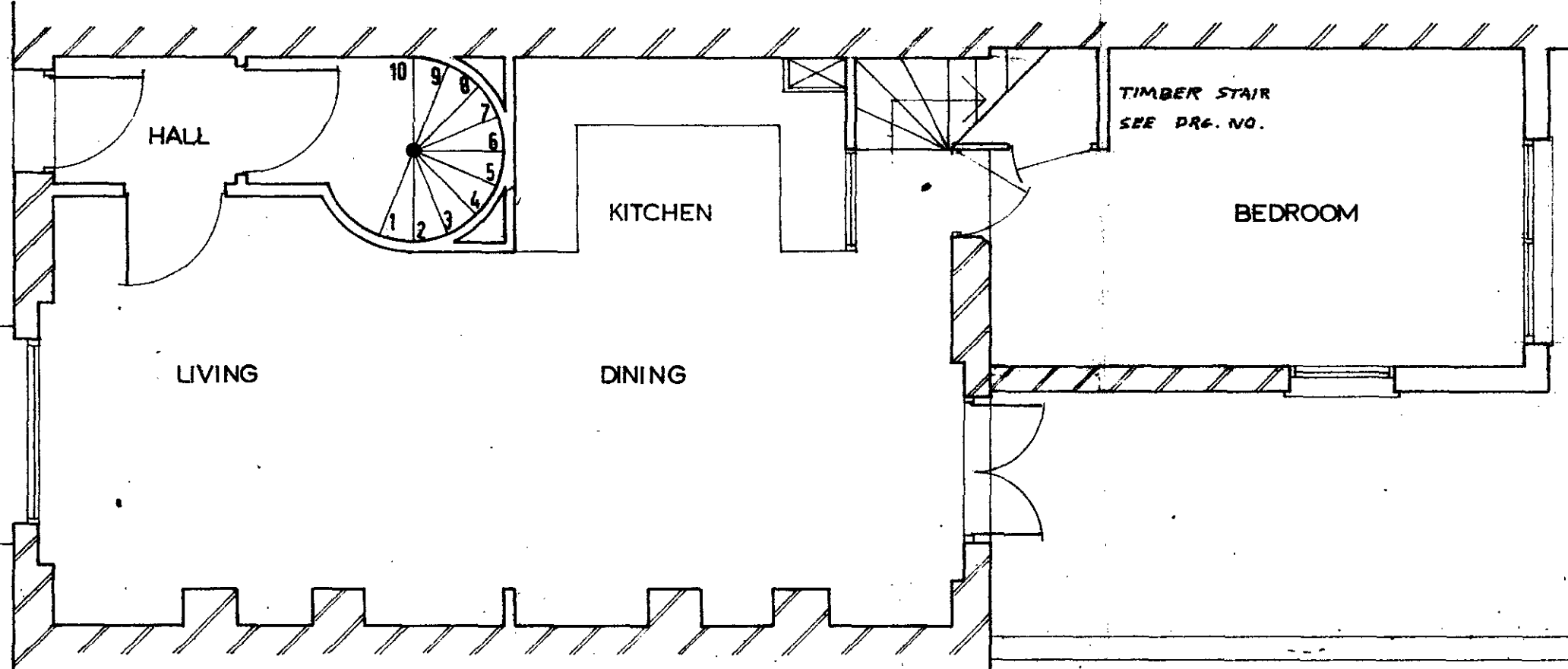
SECOND FLOOR PLAN



FIRST FLOOR PLAN



MEZZANINE FLOOR



GROUND FLOOR PLAN

LONDON BOROUGH OF CAMDEN
 PLANS APPROVED
 DISAPPROVED
 7 JAN 1969
 ON BEHALF OF THE COUNCIL

CTP/G10/4/3 16344

CONVERSION
 49 BASSETT ST. N.W.5.
 P.D. LEDWARD, A.R.I.B.A.
 PROPOSED ALTERATIONS.
 DRG. NO

DATE 16/11/68 SCALE 1/4"