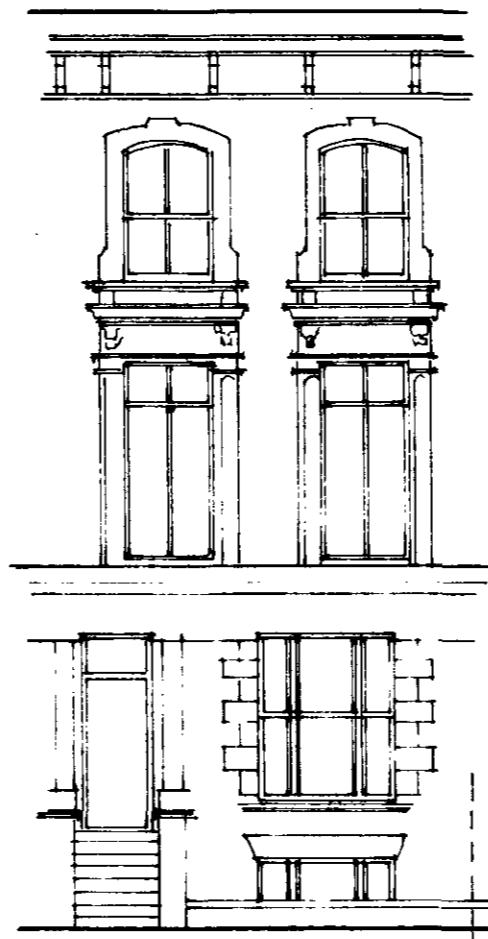
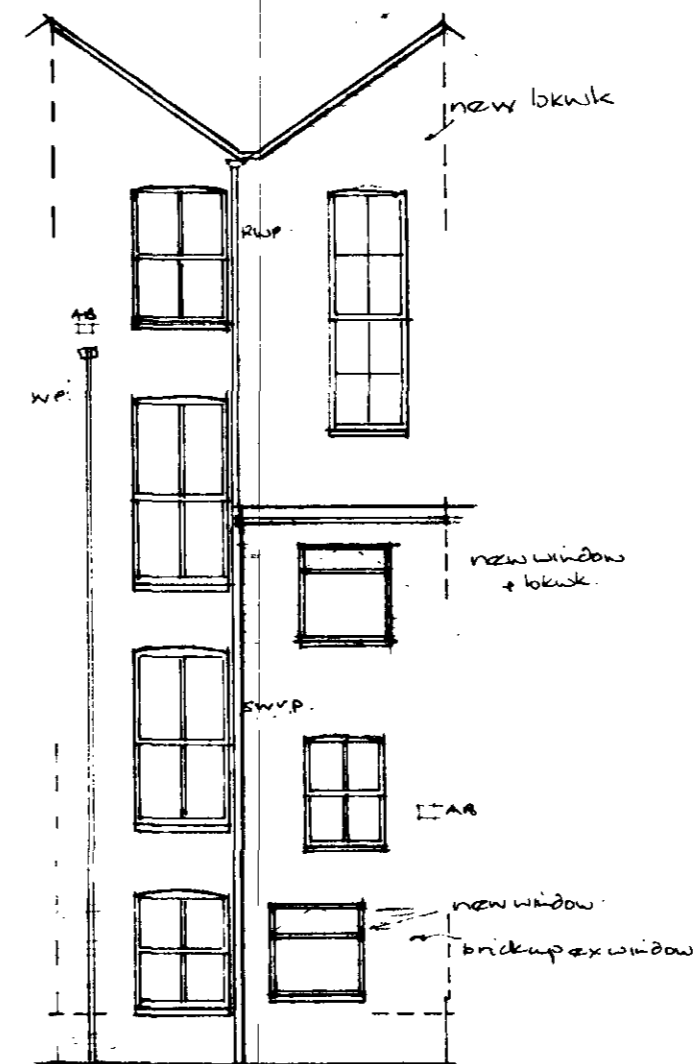


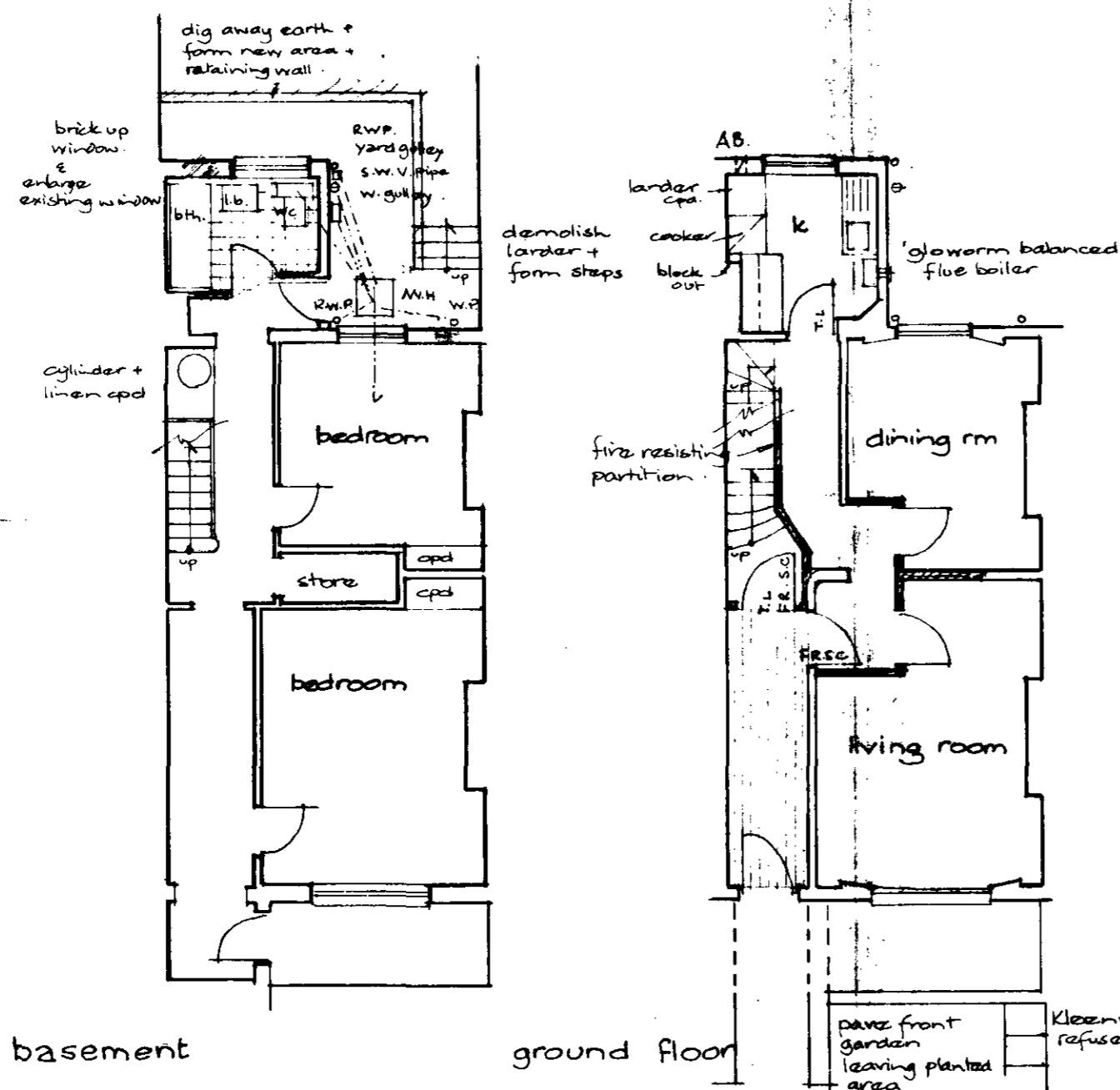
section.



front elevation

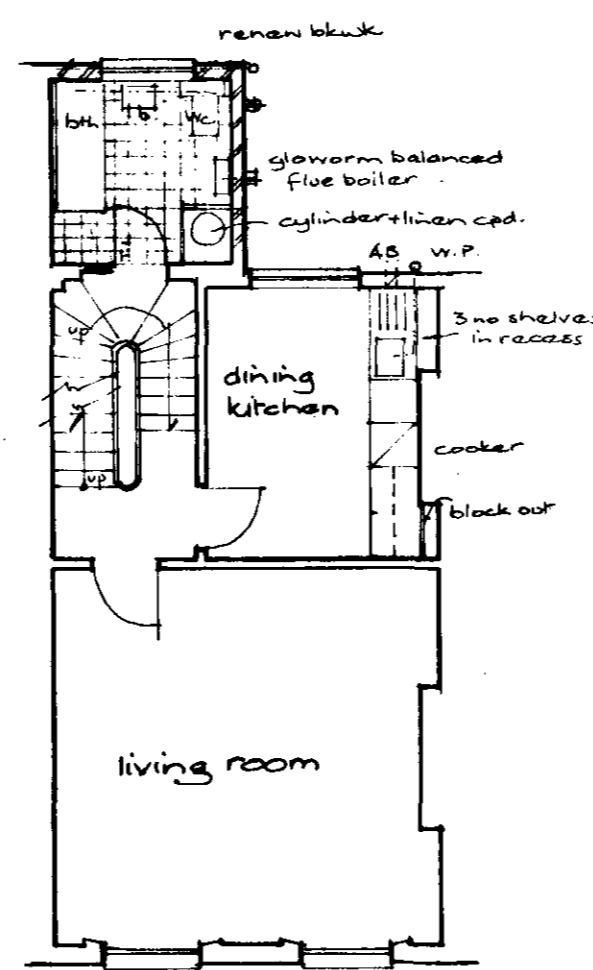


back elevation.

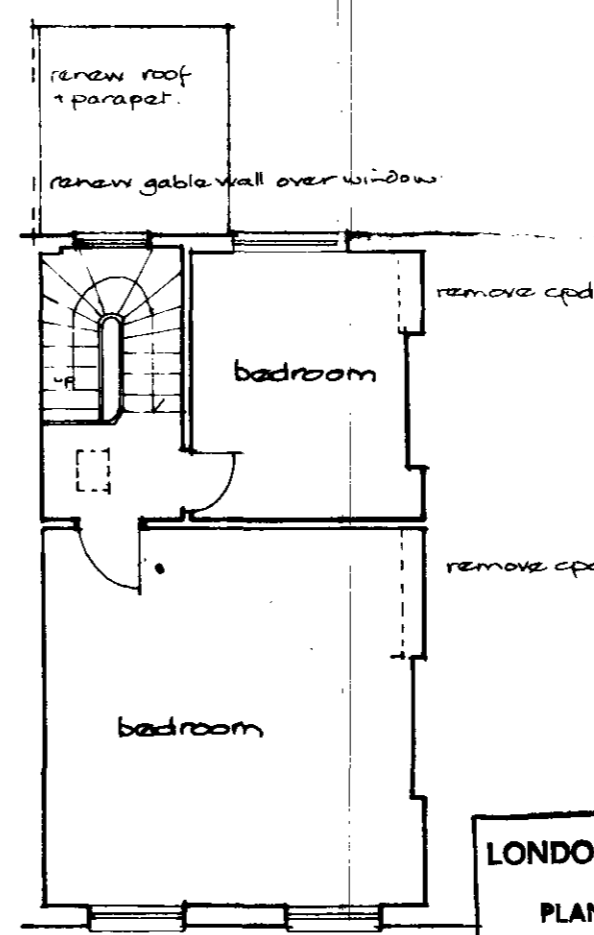


basement

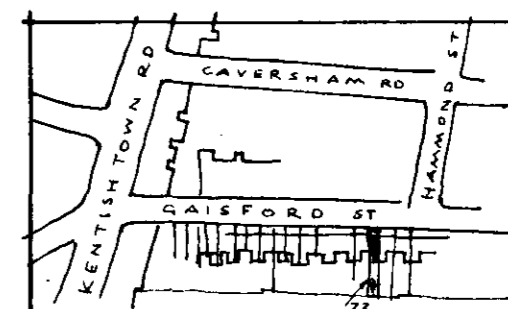
ground floor



first floor



second floor



location. N.T.S

PROPERTY
33 Gaisford St.
London N.W.5

TITLE No.
Conversion CGS/2

Two, 2BR. maisonettes

SCALE 1:100

DATE 21 10 73

REVISION drawn for T.P. 6.12.73
drawn for tender

LONDON BOROUGH OF CAMDEN
PLANS APPROVED
12 FEB 1974
ON BEHALF OF THE COUNCIL

GTP/912/13/59/17956

ORSE COPY

Barbara Watt ARIBA
Salterns Quay
Marine Walk
Hayling Island Hants
070 16 2938