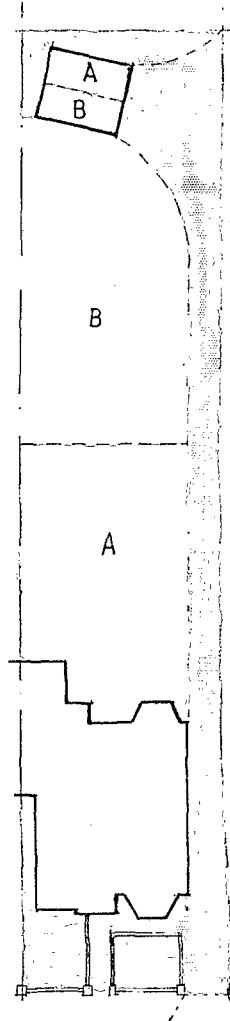


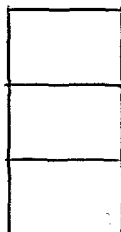
N



LONDON BOROUGH OF CAMDEN
 TOWN AND COUNTRY PLANNING ACTS
 16 JUL 1991
 PLANS APPROVED
 ON BEHALF OF THE COUNCIL



PARSIFAL ROAD



WITH UPPER PROPERTY

WITH LOWER PROPERTY

HELD IN COMMON

9 12 000 9

Scale
1:100

Title SITE PLAN

Location 9 PARSIFAL ROAD, LONDON N.W.6

drwg no 634:1

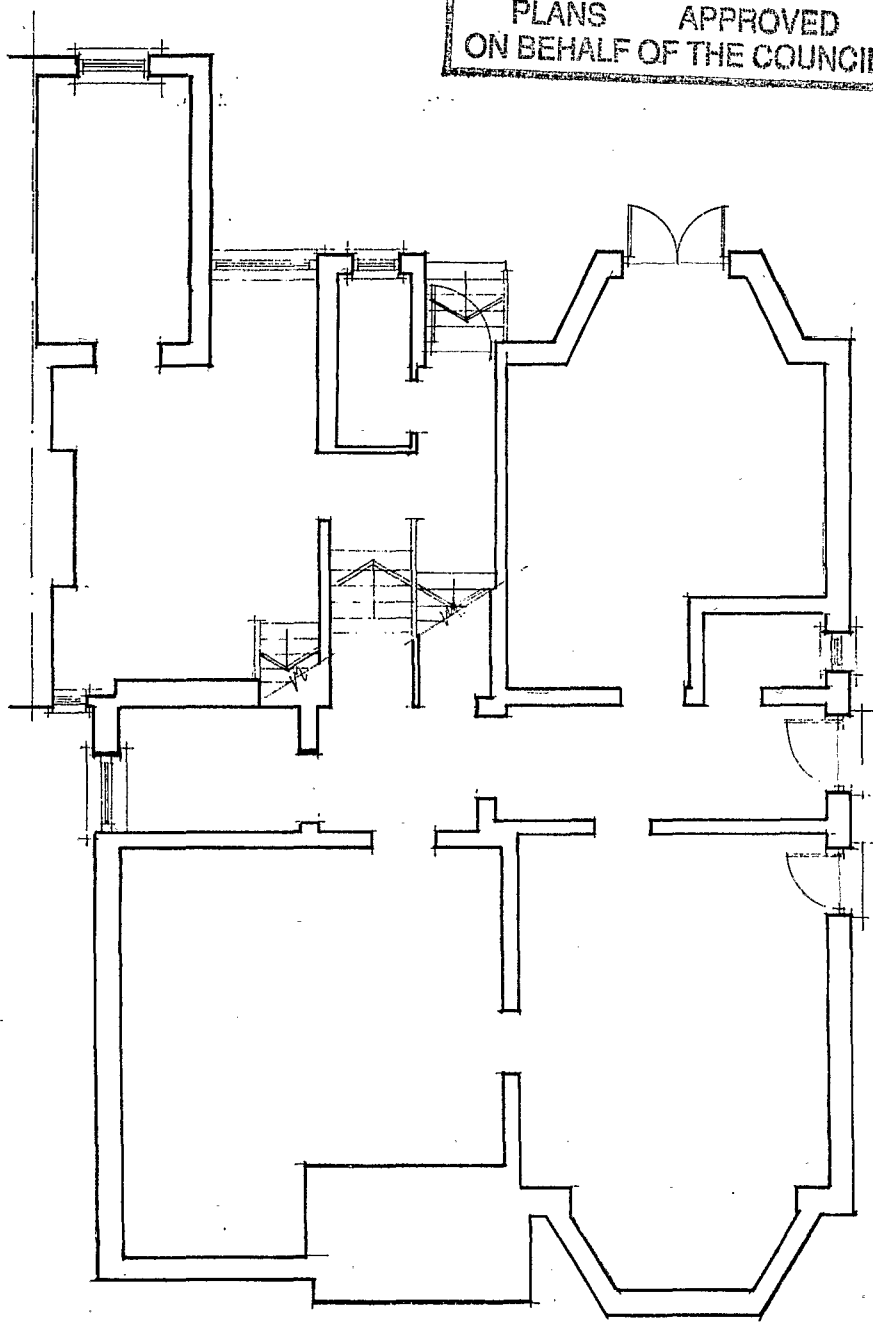
drn by P.H.

date JAN:91

Barrett Parkes
Associates

tel-071-435-3732

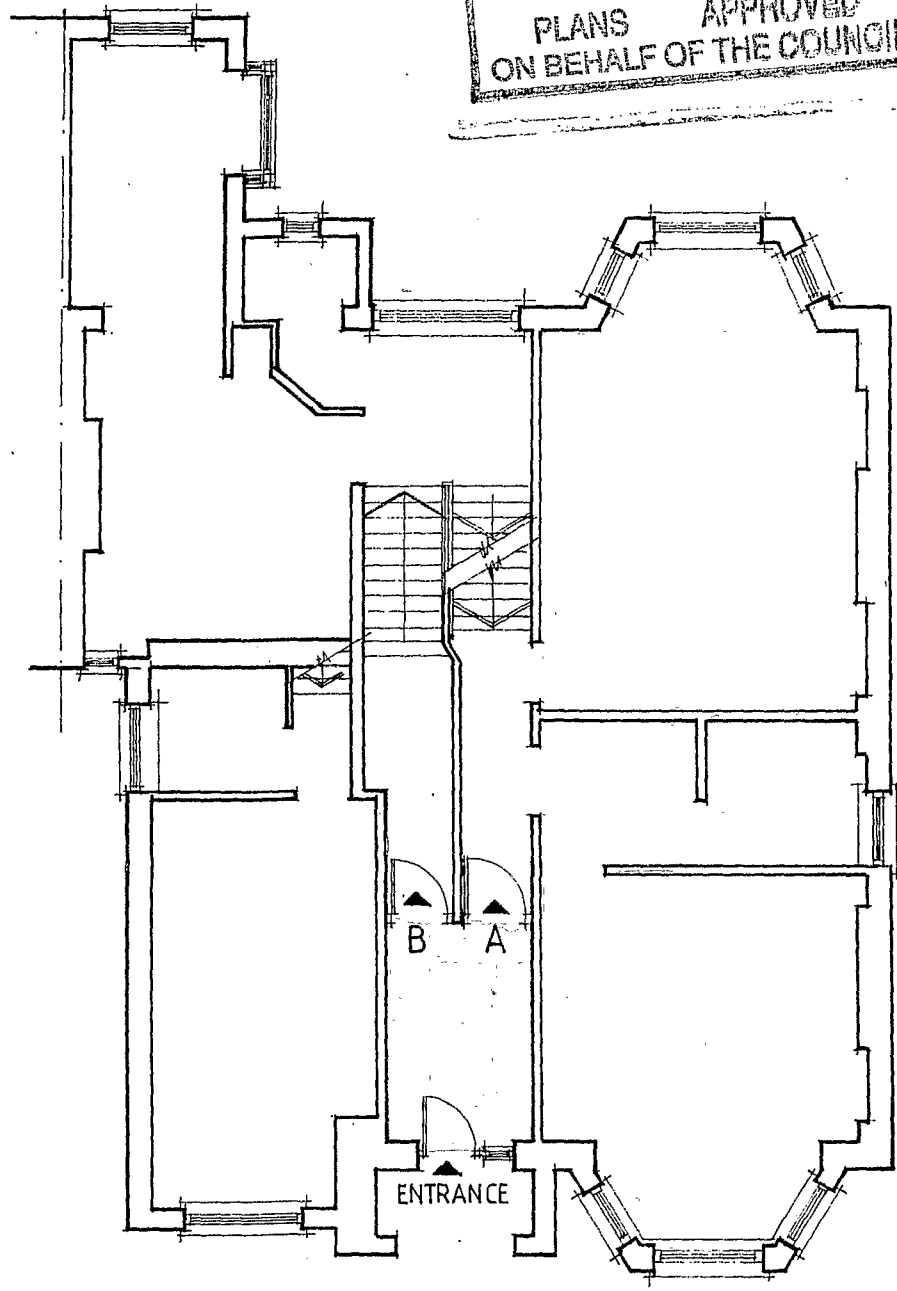
LONDON BOROUGH OF CANNON
 TOWN AND COUNTRY PLANNING ACTS
 16 JUL 1991
 PLANS APPROVED
 ON BEHALF OF THE COUNCIL



9 12 1991

Scale 1:100	Title BASEMENT LEASE PLAN		Barrett Parkes Associates
	Location 9 PARSIFAL ROAD LONDON NW6		
	drwg no 634:2	drn by P.H.	date JAN:91

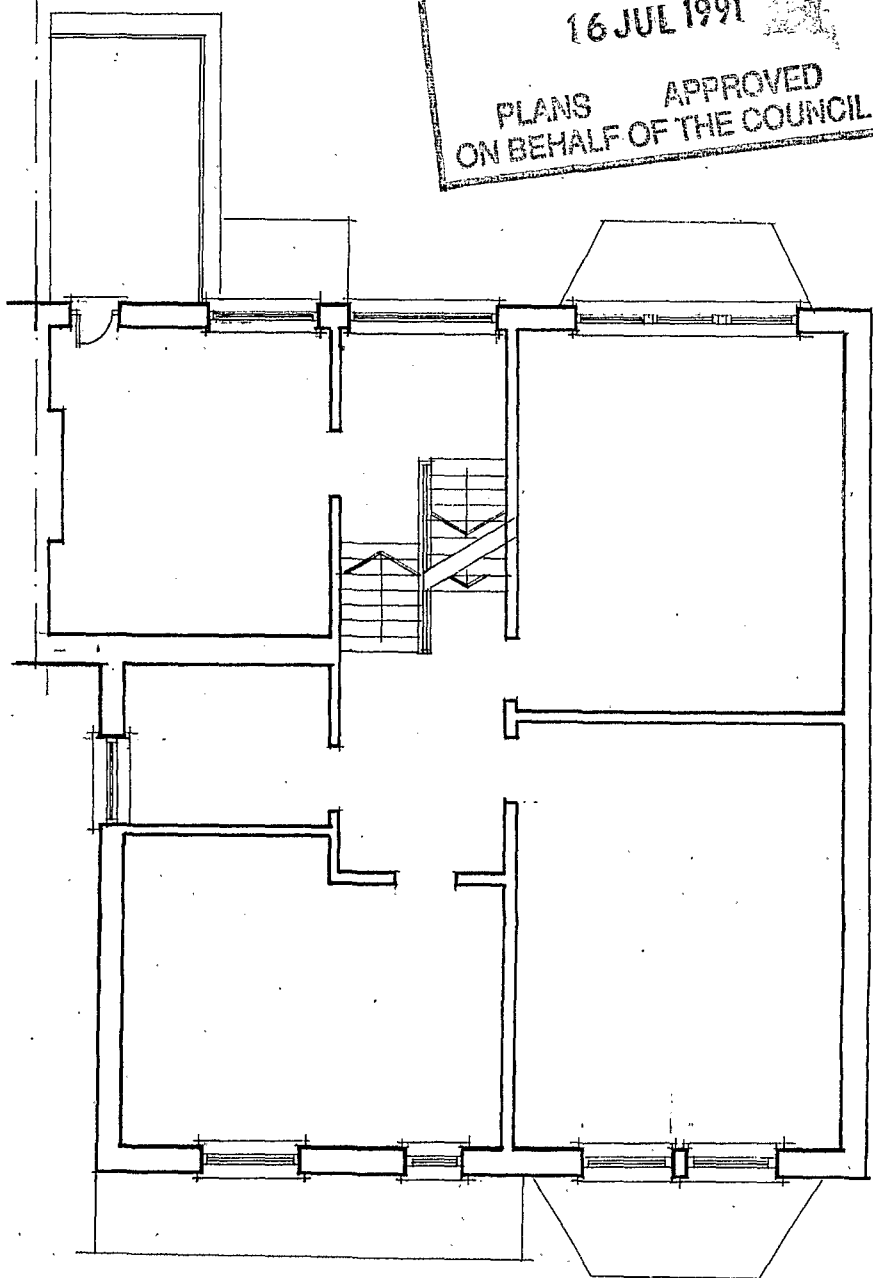
LONDON DISTRICT OF
TOWN AND COUNTRY PLANNING
16 JUL 1991
PLANS APPROVED
ON BEHALF OF THE COUNCIL



1473 12300

SCALE 1:100	TITLE GROUND FLOOR LEASE PLAN		Barrett Parkes Associates
	LOCATION 9 PARSIFAL ROAD LONDON NW6		
	drwg no 634:3	drn by P.H.	

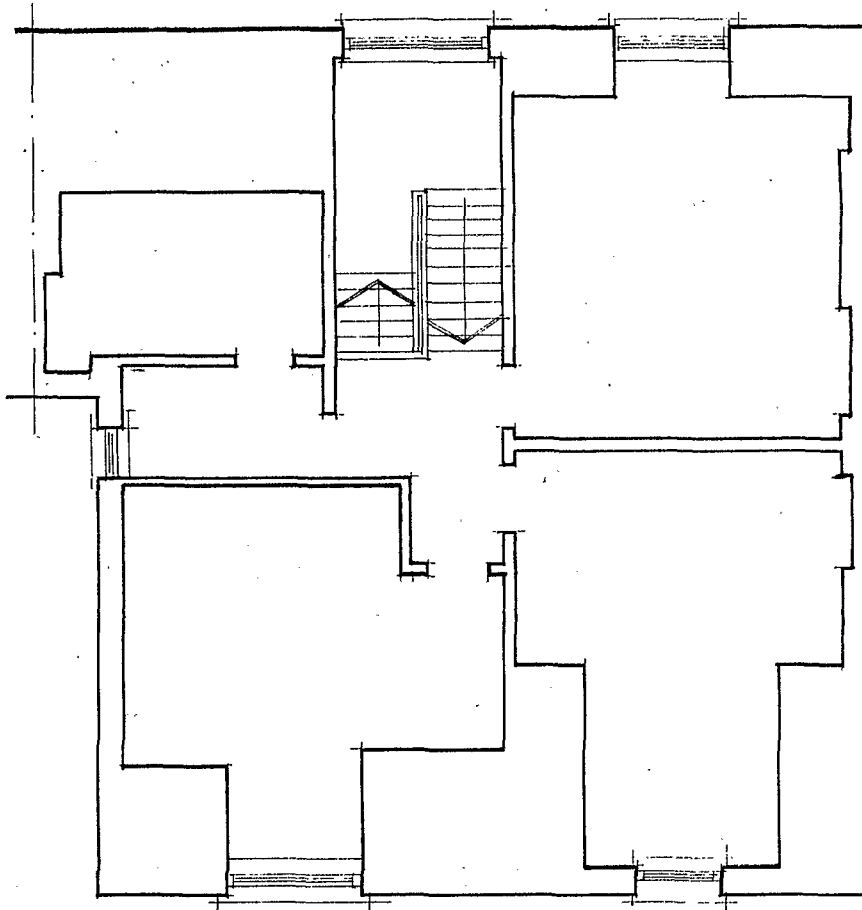
LONDON BOROUGH OF CAMDEN
 TOWN AND COUNTRY PLANNING ACTS
 16 JUL 1991
 PLANS APPROVED
 ON BEHALF OF THE COUNCIL



9123035

Scale 1:100	Title FIRST FLOOR LEASE PLAN		Barrett Parkes Associates
	Location 9 PARSIFAL ROAD LONDON NW6		
	drwg no 634:4	drn by P.H.	

LONDON BOROUGH OF CAMDEN
TOWN AND COUNTRY PLANNING ACTS
16 JUL 1991
PLANS APPROVED
ON BEHALF OF THE COUNCIL



15 JUL 1991

Scale
1:100

title SECOND FLOOR LEASE PLAN

location 9 PARSIFAL ROAD LONDON NW6

drwg no 634:5

drn by P.H.

date JAN : 90

Barrett Parkes
Associates

tell 071-435-3732