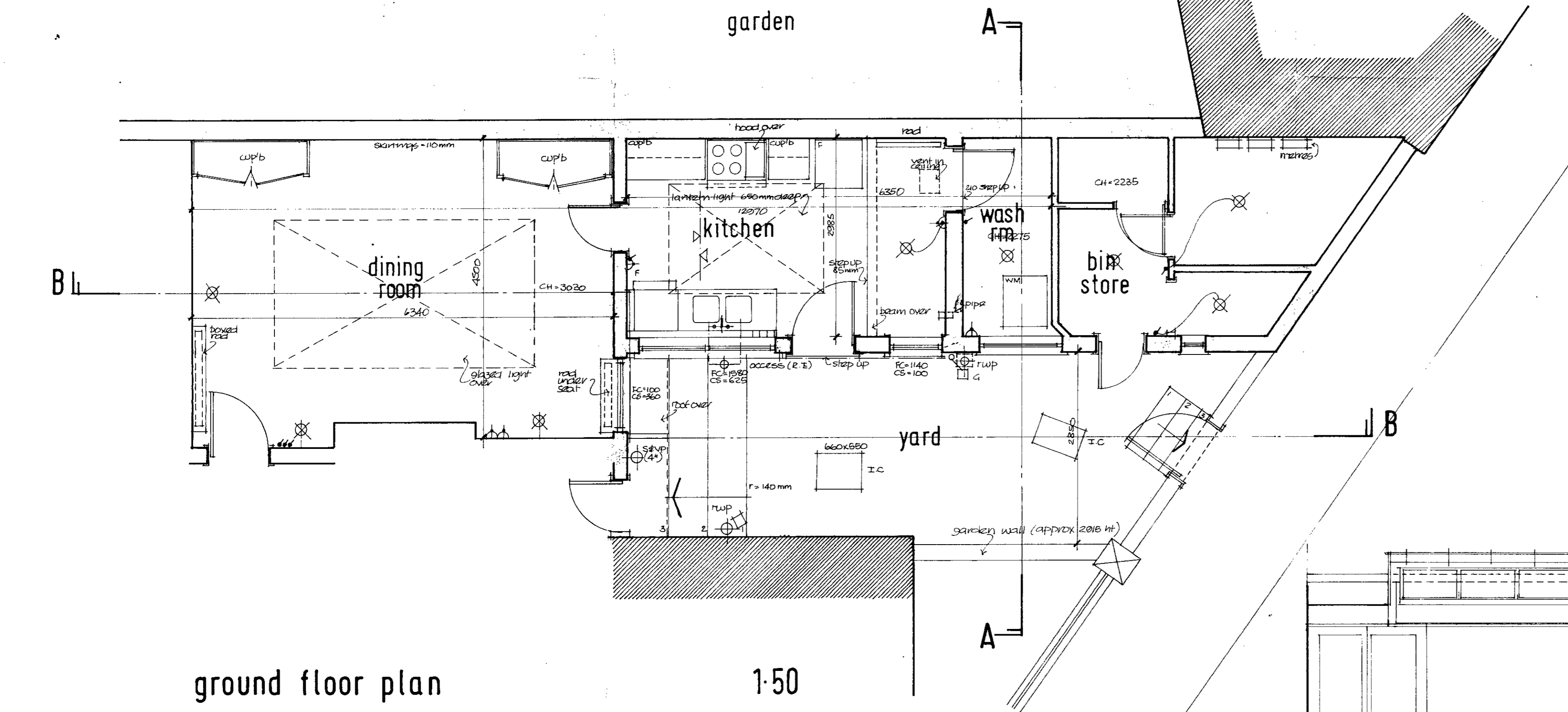


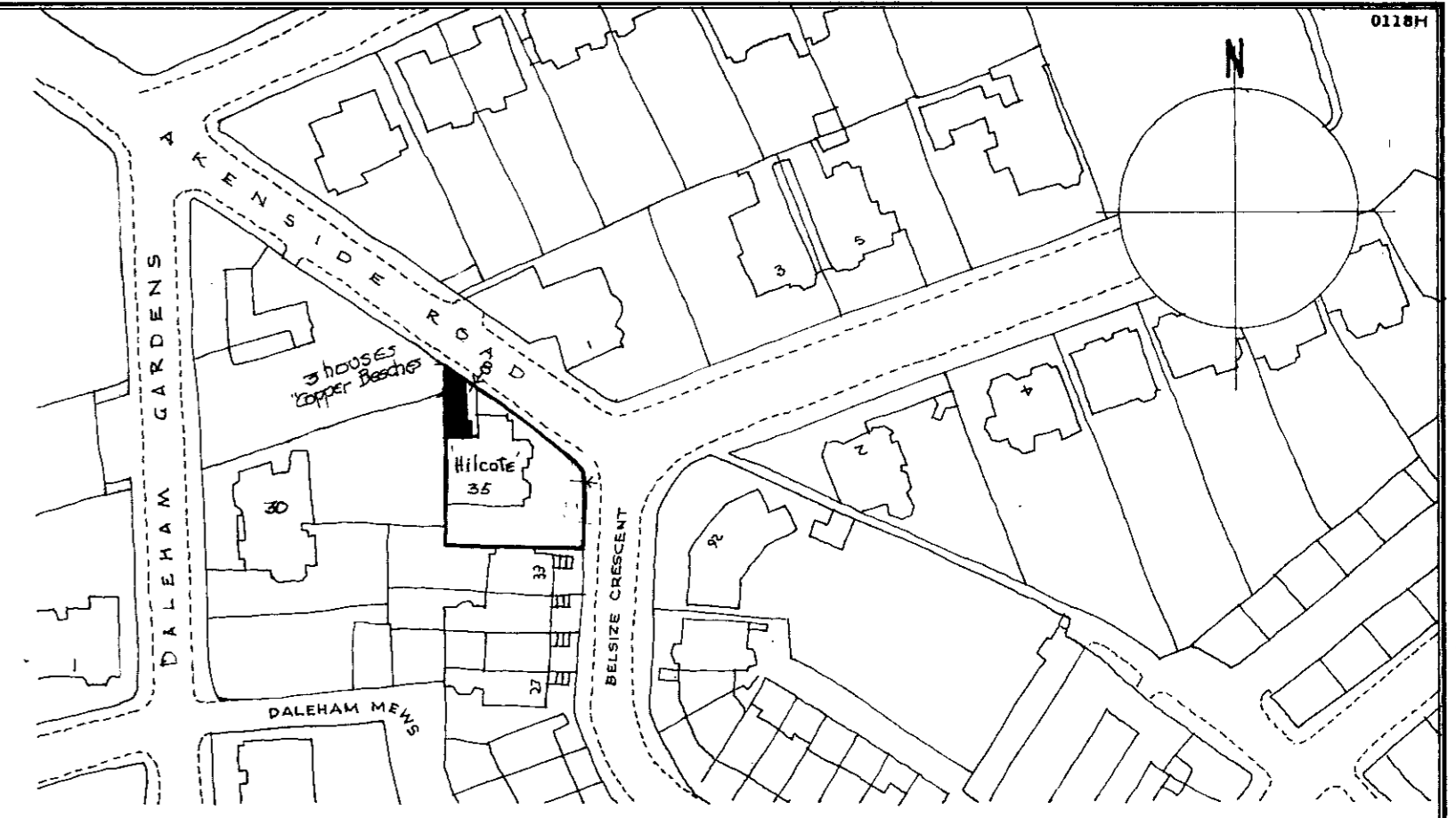
roof plan



ground floor plan

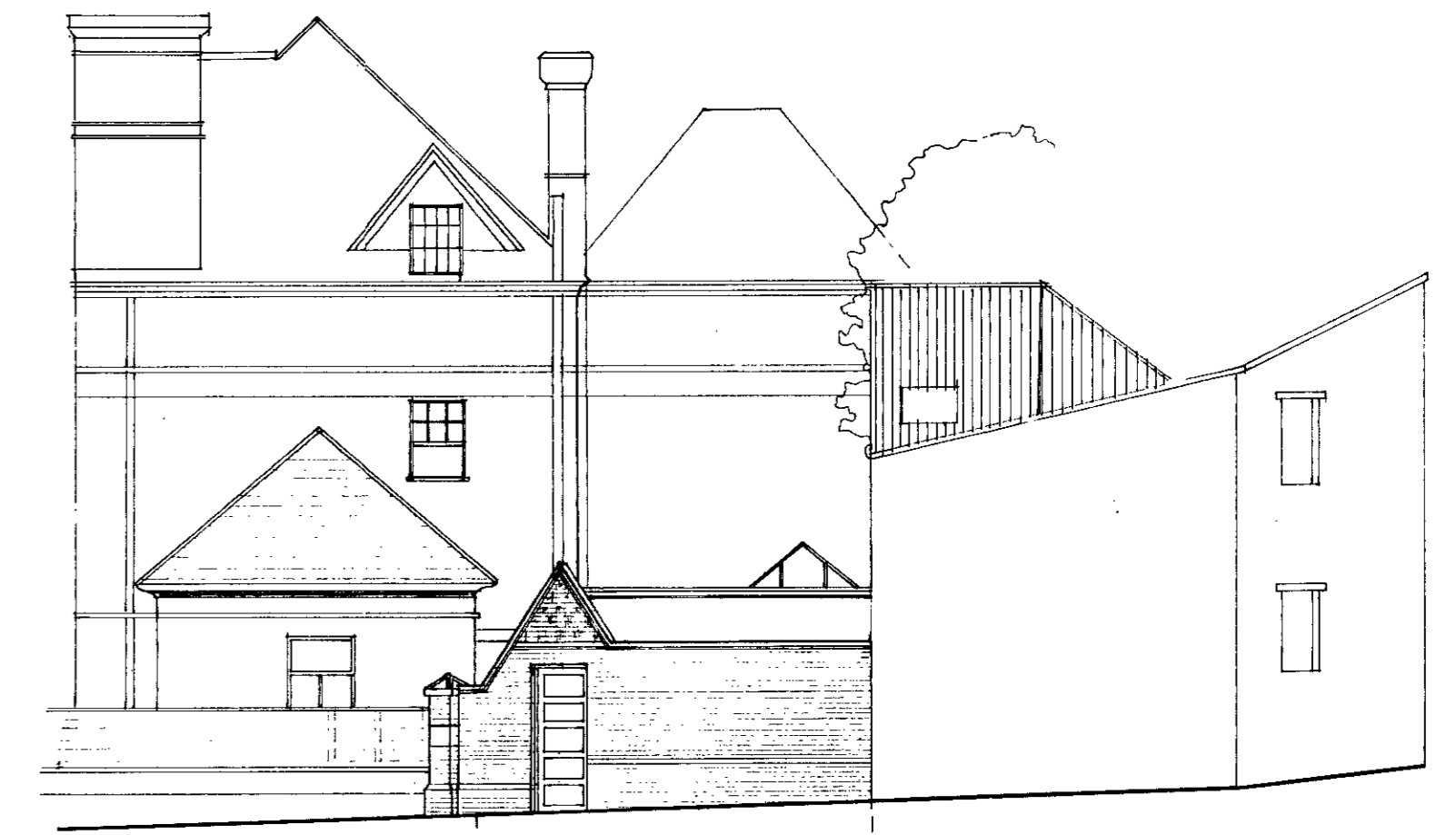
1:50

area of site:
 .152 acre (.061 ha) net.
 .203 " (.082 ha) gross



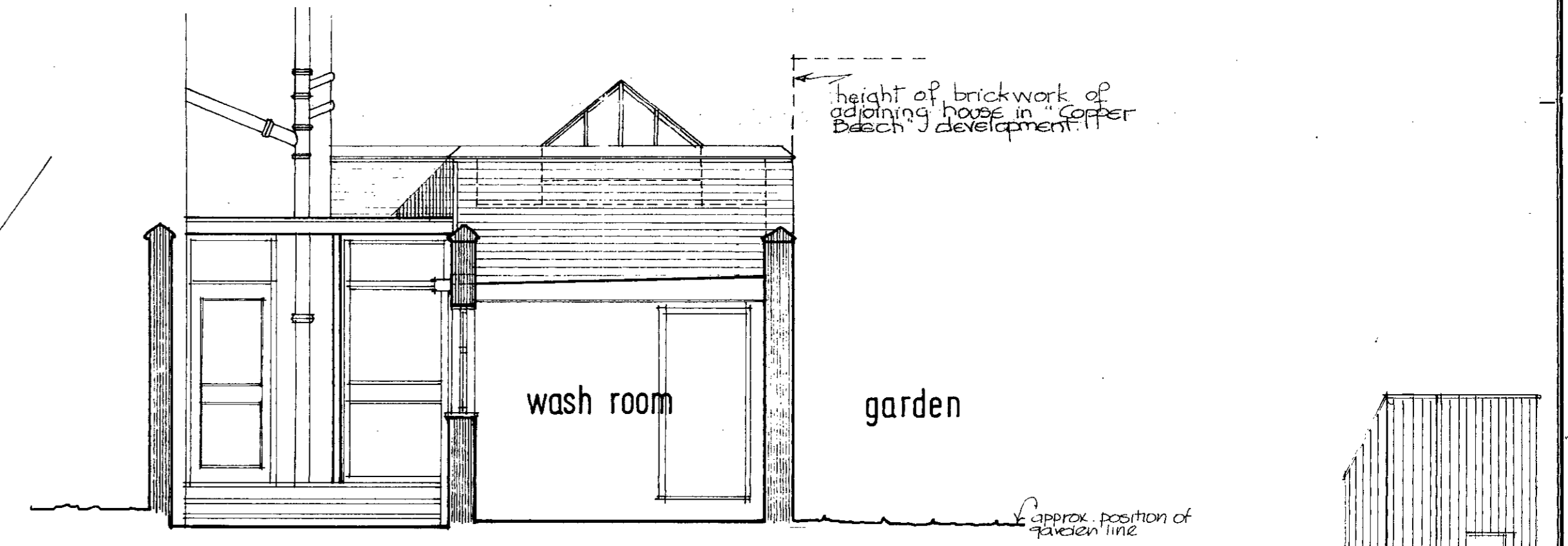
location plan

scale: 1:1250

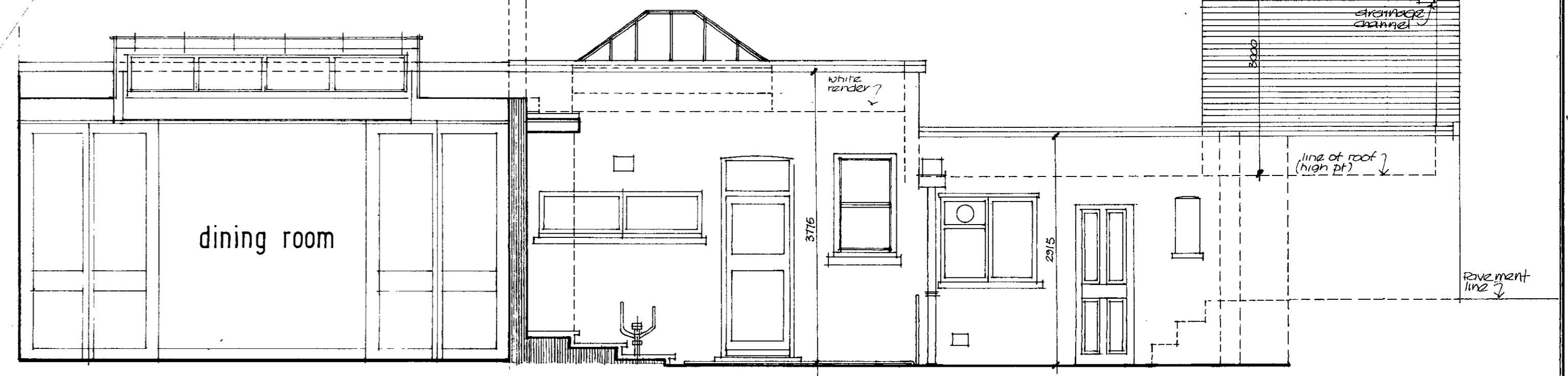


street elevation

1:100



section A-A



section B-B

TP 840 13 19 R1



DINERMAN DAVISON ASSOCIATES
 Chartered Architects
 22 Perrins Walk Hampstead London NW3 6TJ 01-435 0038-9-0

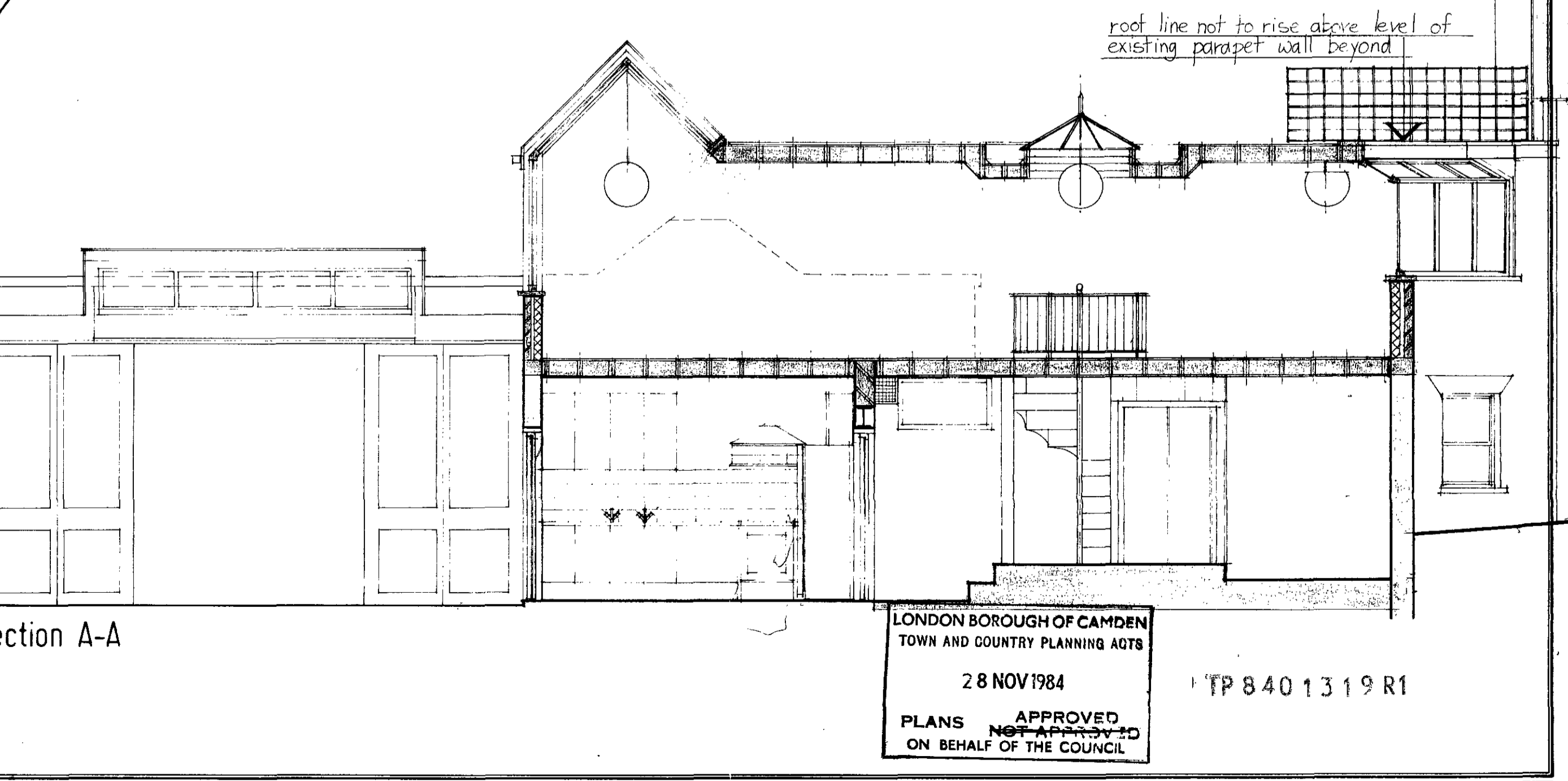
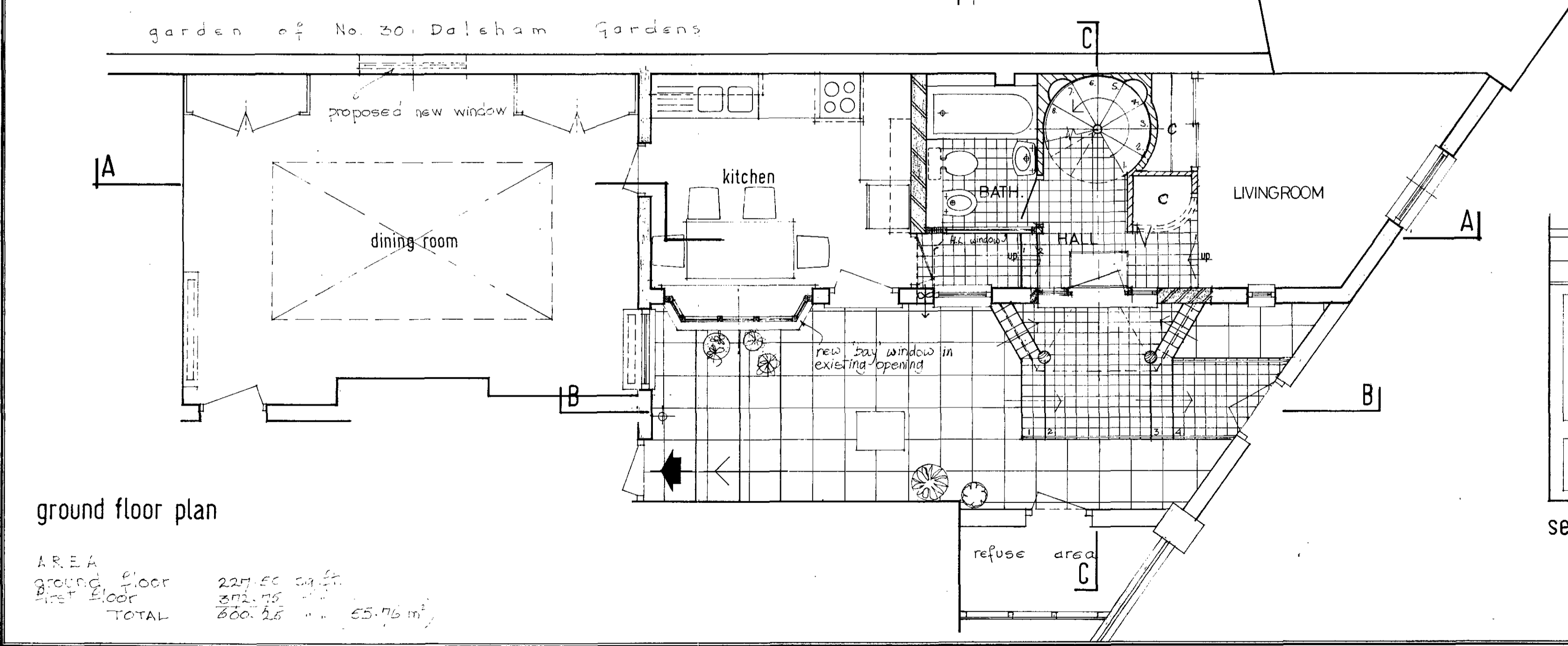
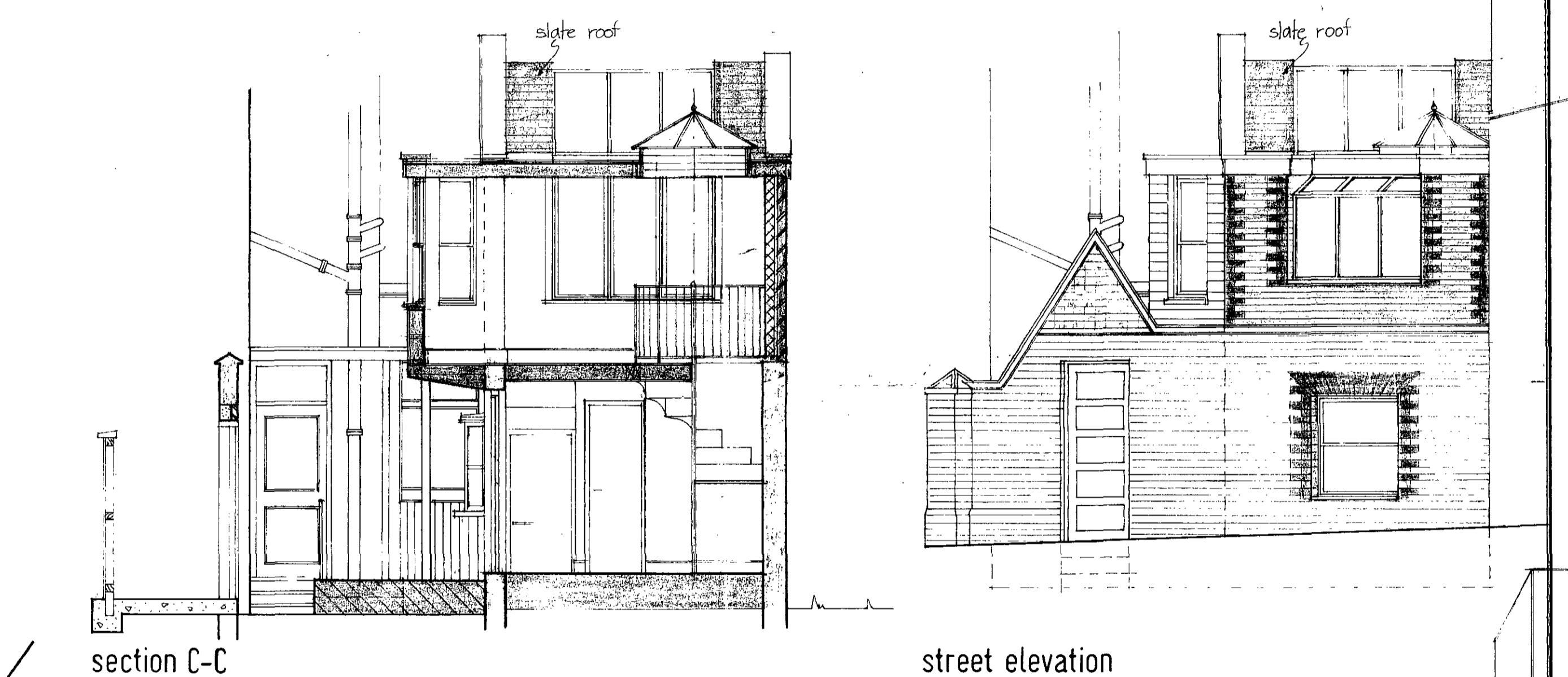
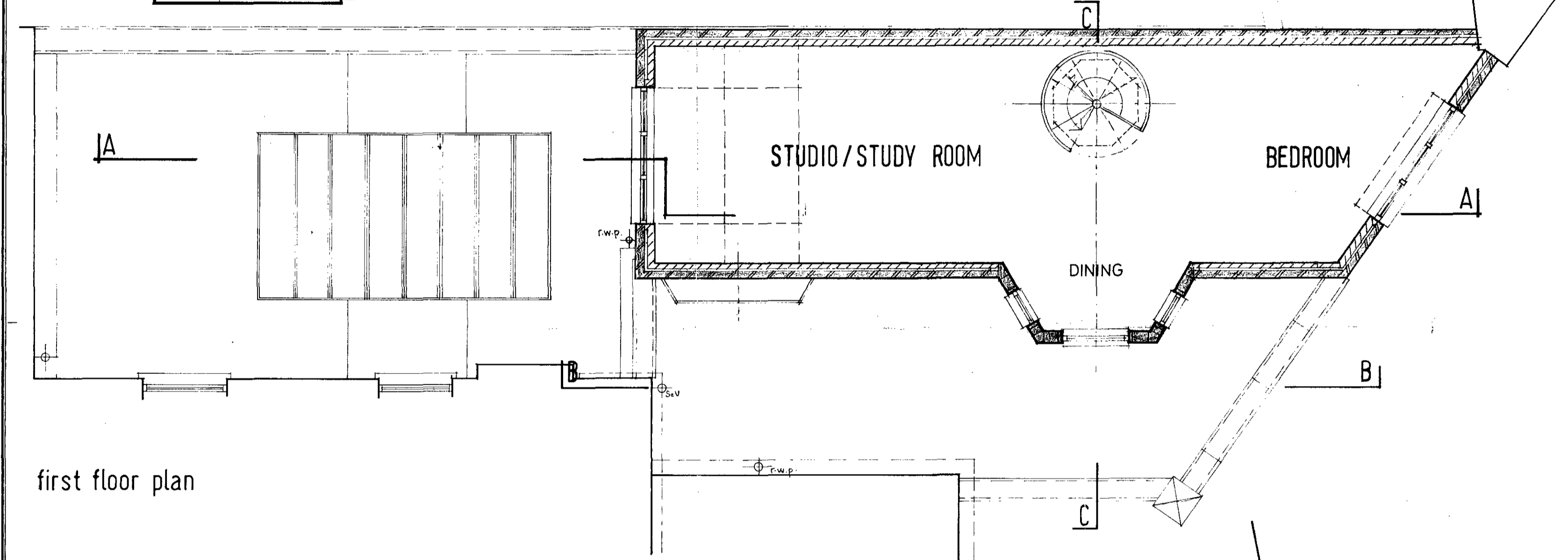
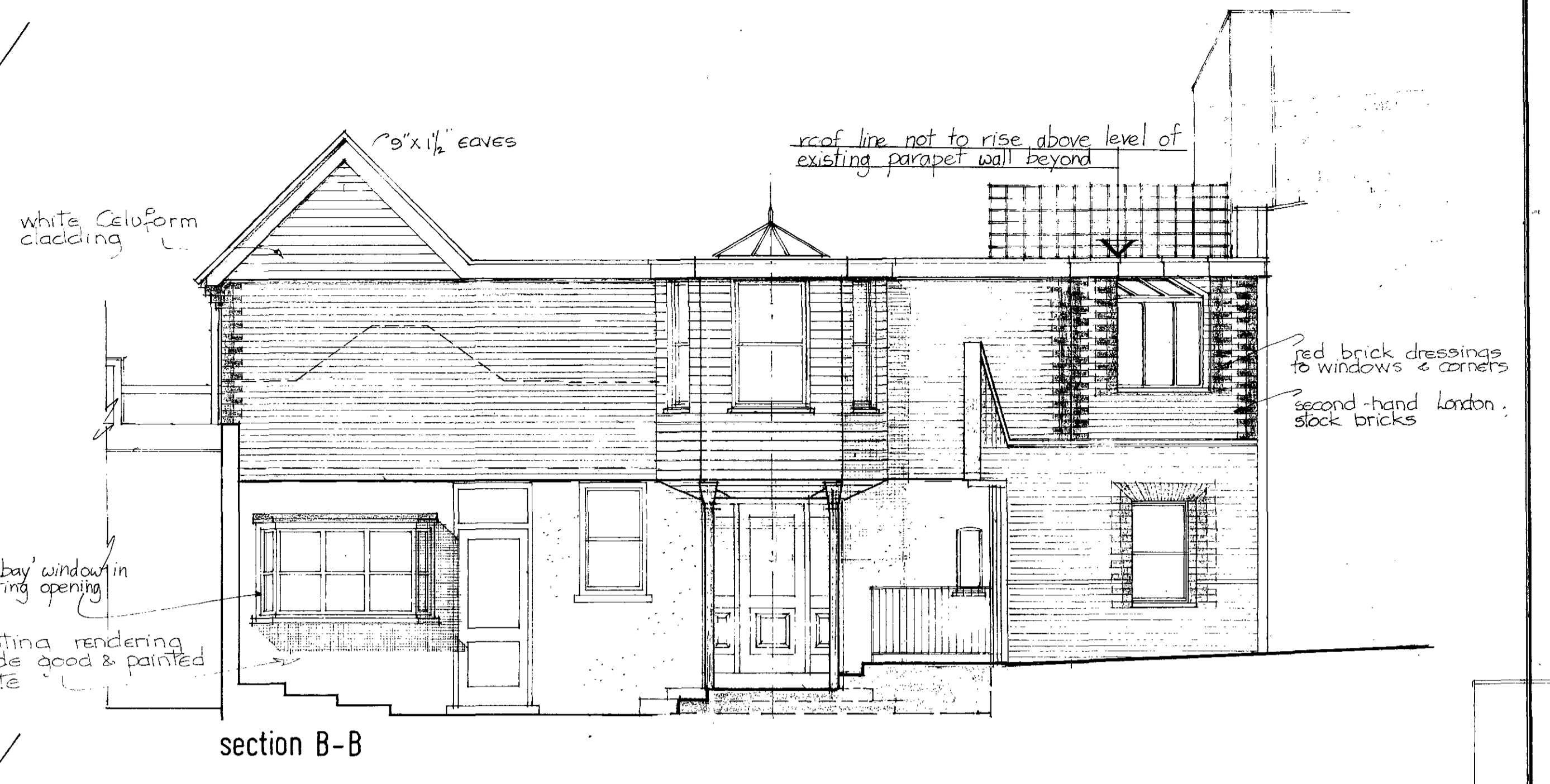
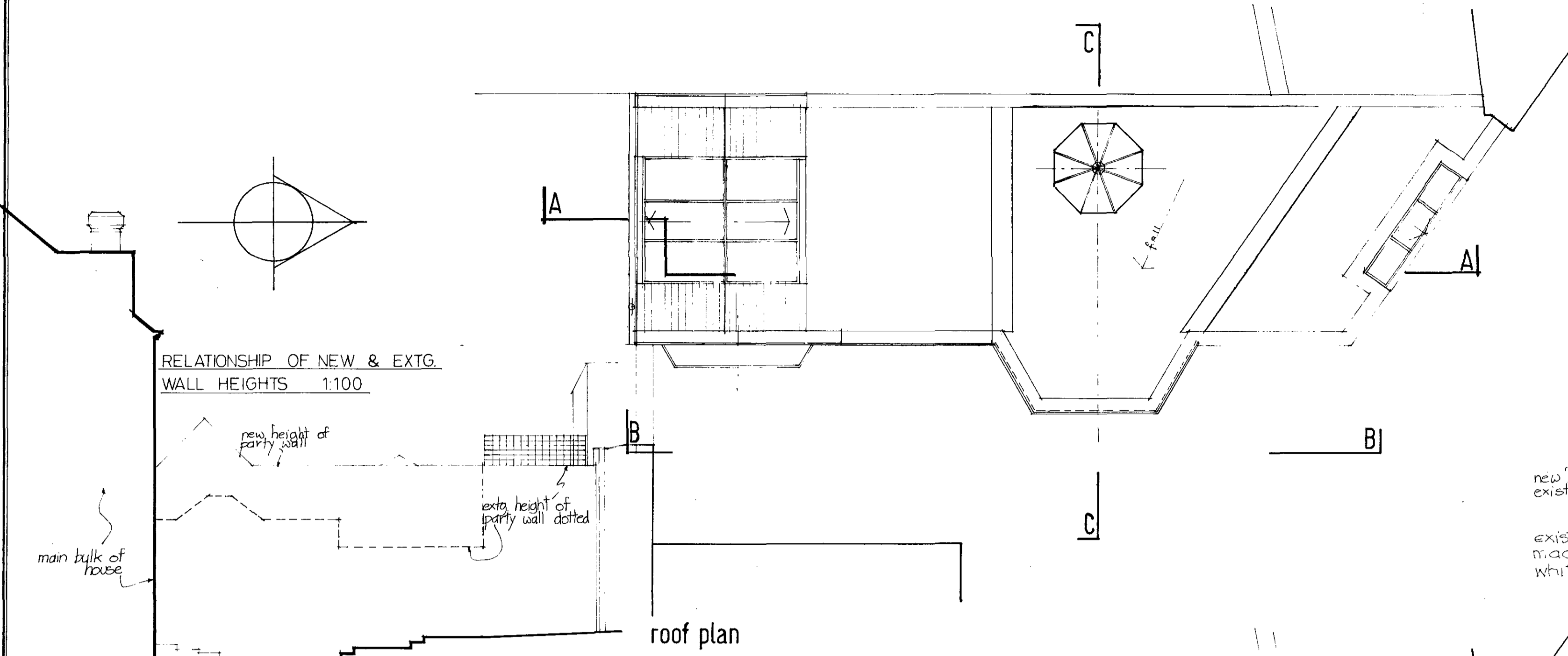
revisions	dates

revisions	dates
A amendments to front wall & street elevation	28/07/84

8 Akenside Road, Hampstead NW3
 Measured Survey

drawn by
 rjb
 date
 15.5.84

drawing no.
 914/1A
 scale
 1:50 1:100



AREA

ground floor	227.55 sqm
first floor	302.75 sqm
TOTAL	530.30 sqm (55.76 m ²)

LONDON BOROUGH OF CAMDEN
TOWN AND COUNTRY PLANNING ACTS
28 NOV 1984
TP 840 1319 R1
PLANS APPROVED
ON BEHALF OF THE COUNCIL

DDA
DINERMAN DAVISON ASSOCIATES
Chartered Architects
22 Perrins Walk Hampstead London NW3 6TJ 01-435 0088-9-0

revisions	dates

revisions	dates

8 Akenside Road, NW3
proposed alterations

drawn by
jem
date
5/7/84
drawing no.
914/4
scale
1:50