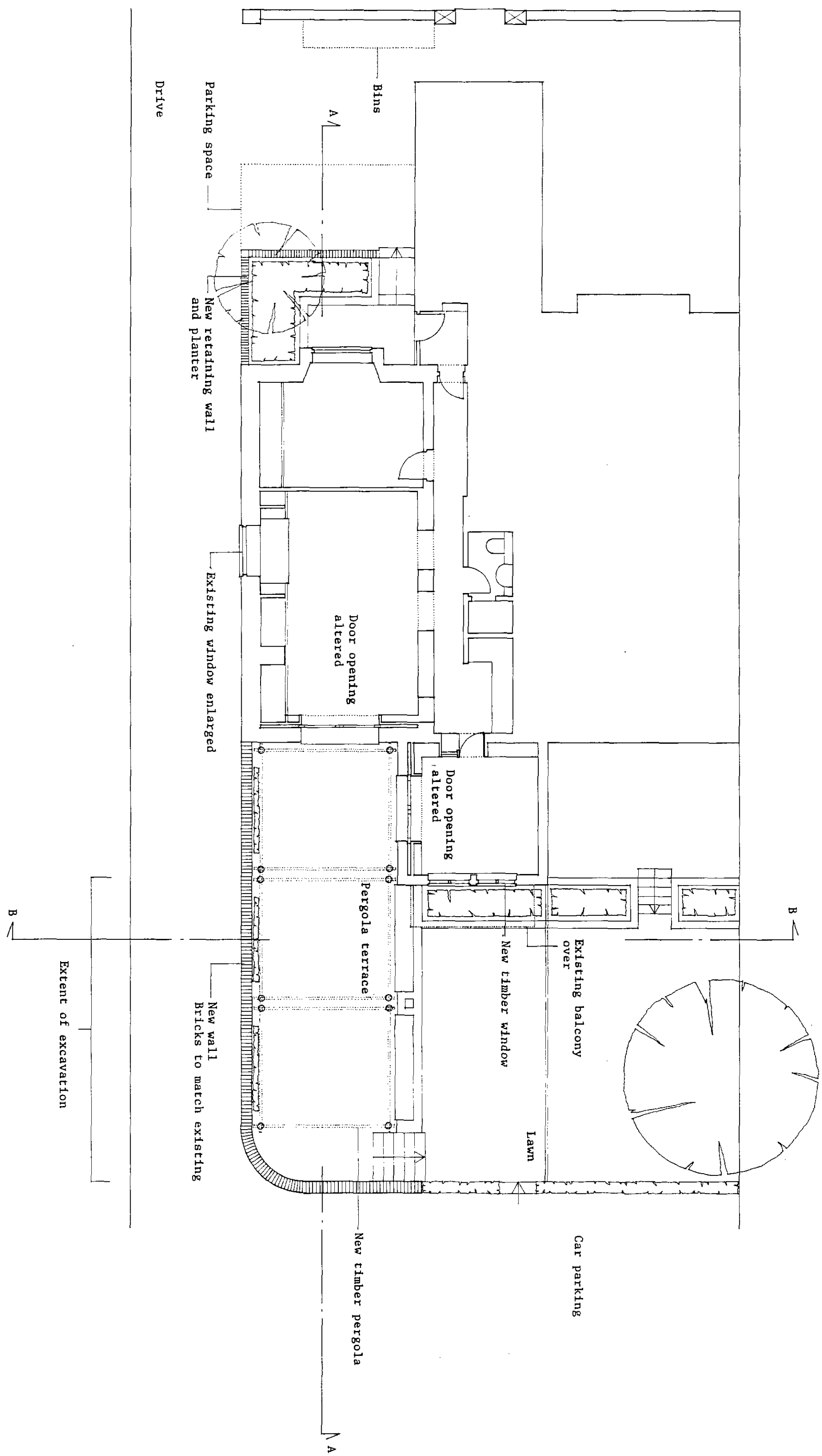
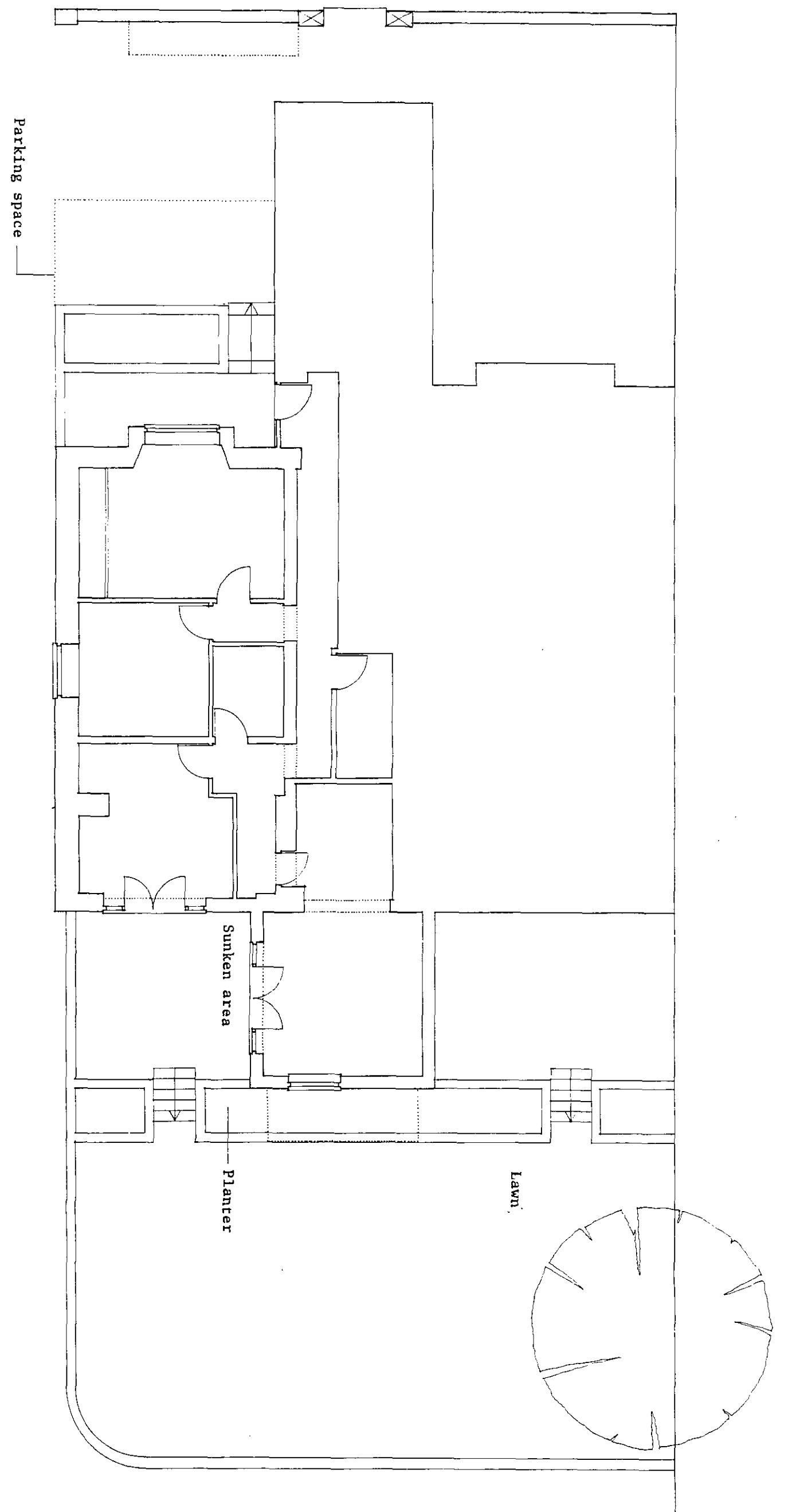


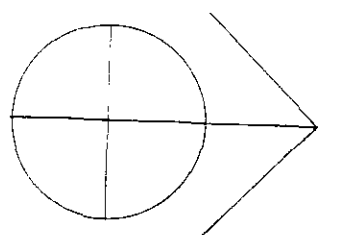
PLAN AS PROPOSED



PLAN AS EXISTING



P9601201



LONDON BOROUGH OF CAMDEN
 Town and Country Planning
 1 D. M.P. 1886
 PLANS APPROVED
 ON BEHALF OF THE COUNCIL

E EVANS & D SHALEV ARCHITECTS & PLANNING CONSULTANTS

62, Fitzjohns Avenue		186	02	SCALE 1:100
2 BELSIZE CRESCENT LONDON NW3 5QU				DATE 18.4.96
				DRWN
				STAGE

071 435 8604 fax 071 431 3862

REF	DATE	REVISION
A		
B		
C		
D		
E		
F		
G		

REF	DATE	REVISION
H		
I		
J		
K		
L		
M		
N		

REF	DATE	REVISION
O		
P		
Q		
R		
S		
T		
U		

REF	DATE	REVISION
V		
W		
X		
Y		
Z		