

LONDON BOROUGH OF CAMDEN
 TOWN AND COUNTRY PLANNING ACTS
 27 JAN 1982
 APPROVED
 PLANS NOT VALIDATED
 ON BEHALF OF THE COUNCIL

NOTE:
 SITE BOUNDARY OUTLINED IN RED

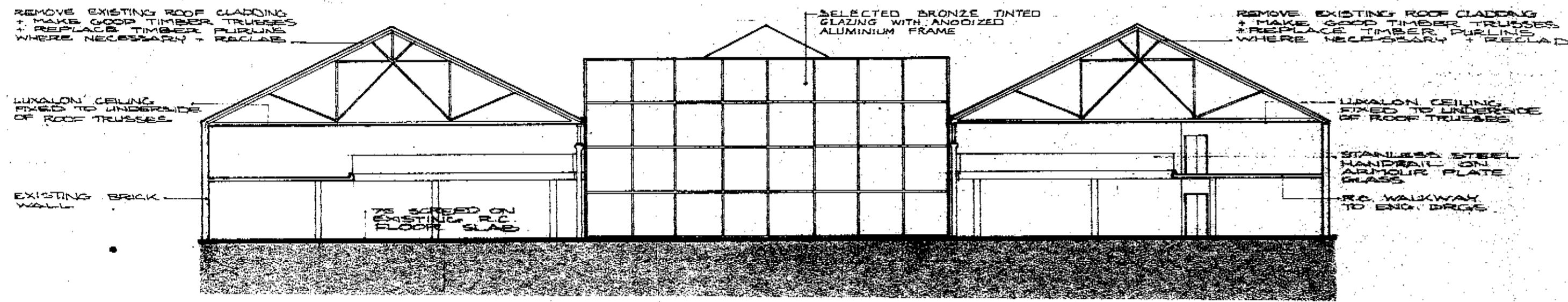
SITE LOCATION MAP

REVISIONS: A 15/01/81 GENERAL ARRANGEMENTS

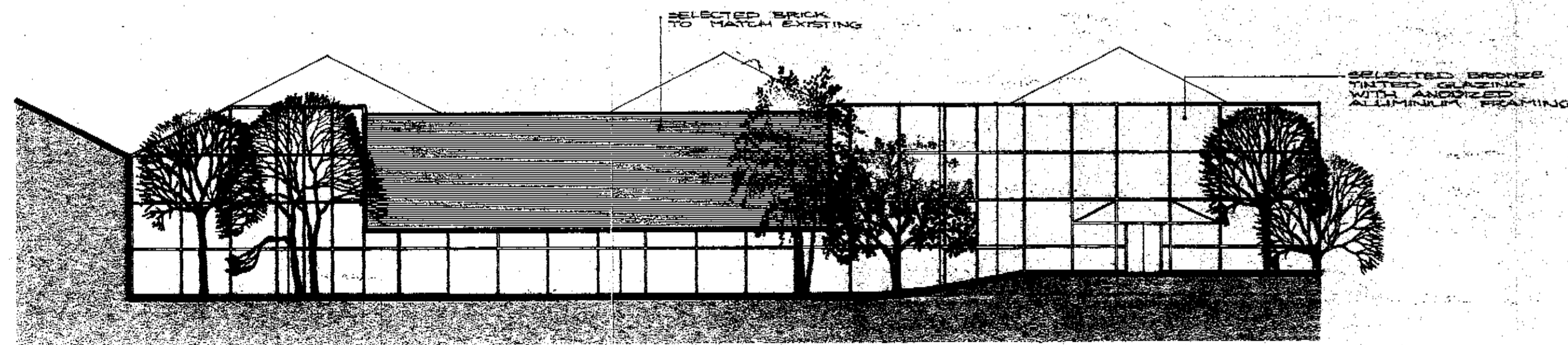
CTP/F11/1x/B/33/87

O'REILLY DESIGN & PLANNING SERVICES
 ARCHITECTS & PLANNING CONSULTANTS, 40 ELGIN ROAD, BALLSBRIDGE, DUBLIN 4. Tel: 661288

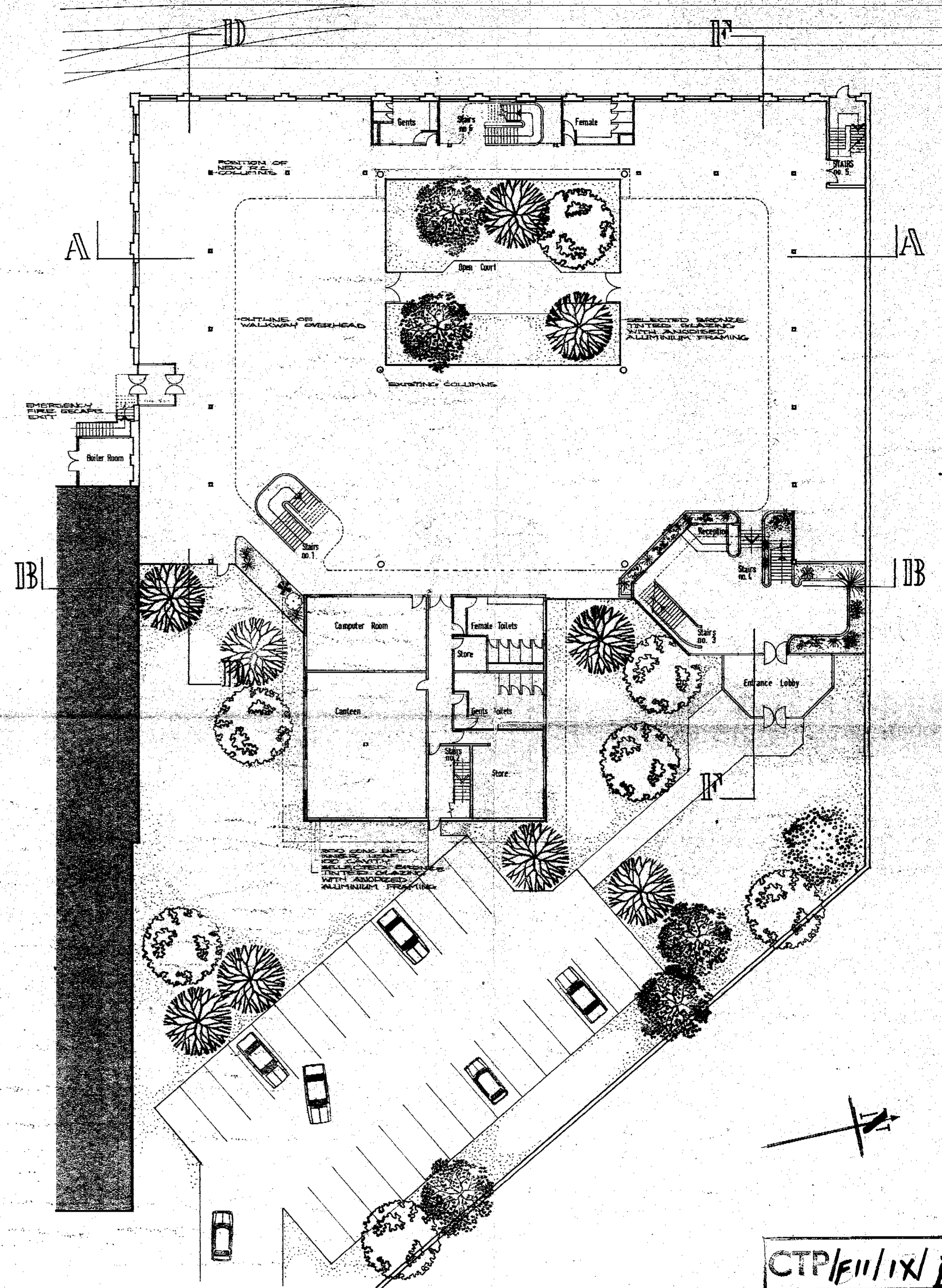
PROPOSED OFFICE DEVELOPMENT at KENTISH TOWN, LONDON.	SITE LOCATION MAP	1:500	FEB 81
		8057/05	



SECTION A-A



EAST ELEVATION



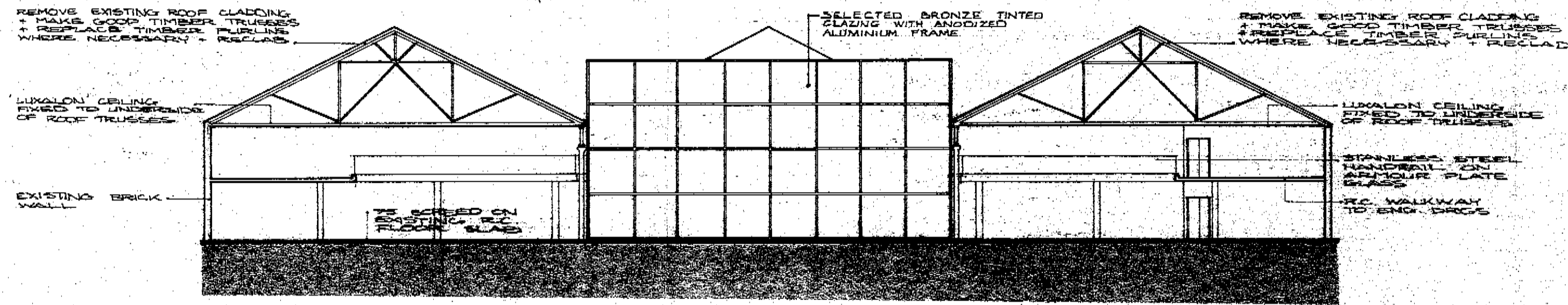
GROUND FLOOR PLAN

CTP/F11/IX/B/33421

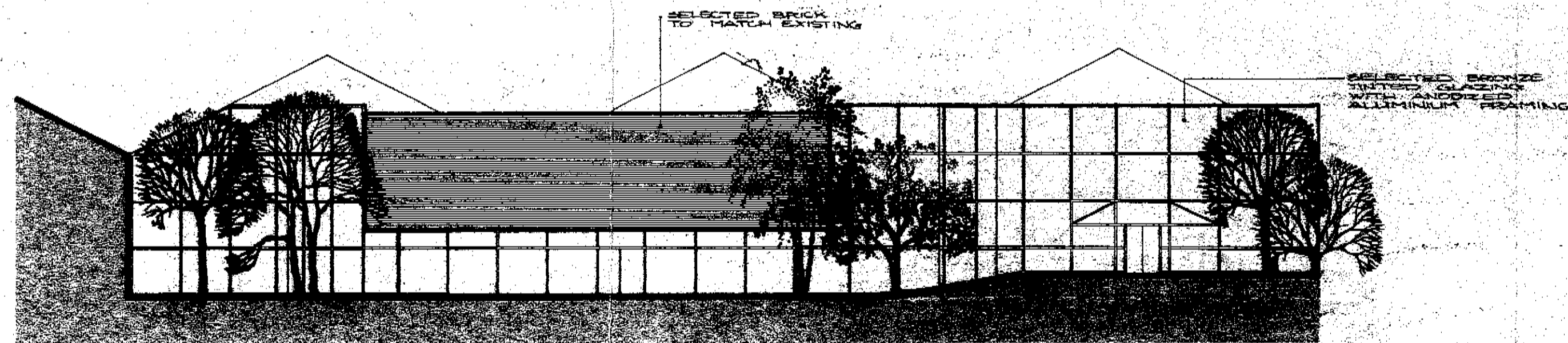
REVISIONS A: NOVEMBER 1981
 NOTES ADDED RECEPTION AREA CHANGED
 STAIRS NO 5 CHANGED POSITION
 CORE AREA CHANGED; ROOMS
 RELOCATED.

O'REILLY DESIGN & PLANNING SERVICES
 ARCHITECTS & PLANNING CONSULTANTS, 40, ELGIN ROAD, BALLSBRIDGE, DUBLIN 4. Tel. 681288

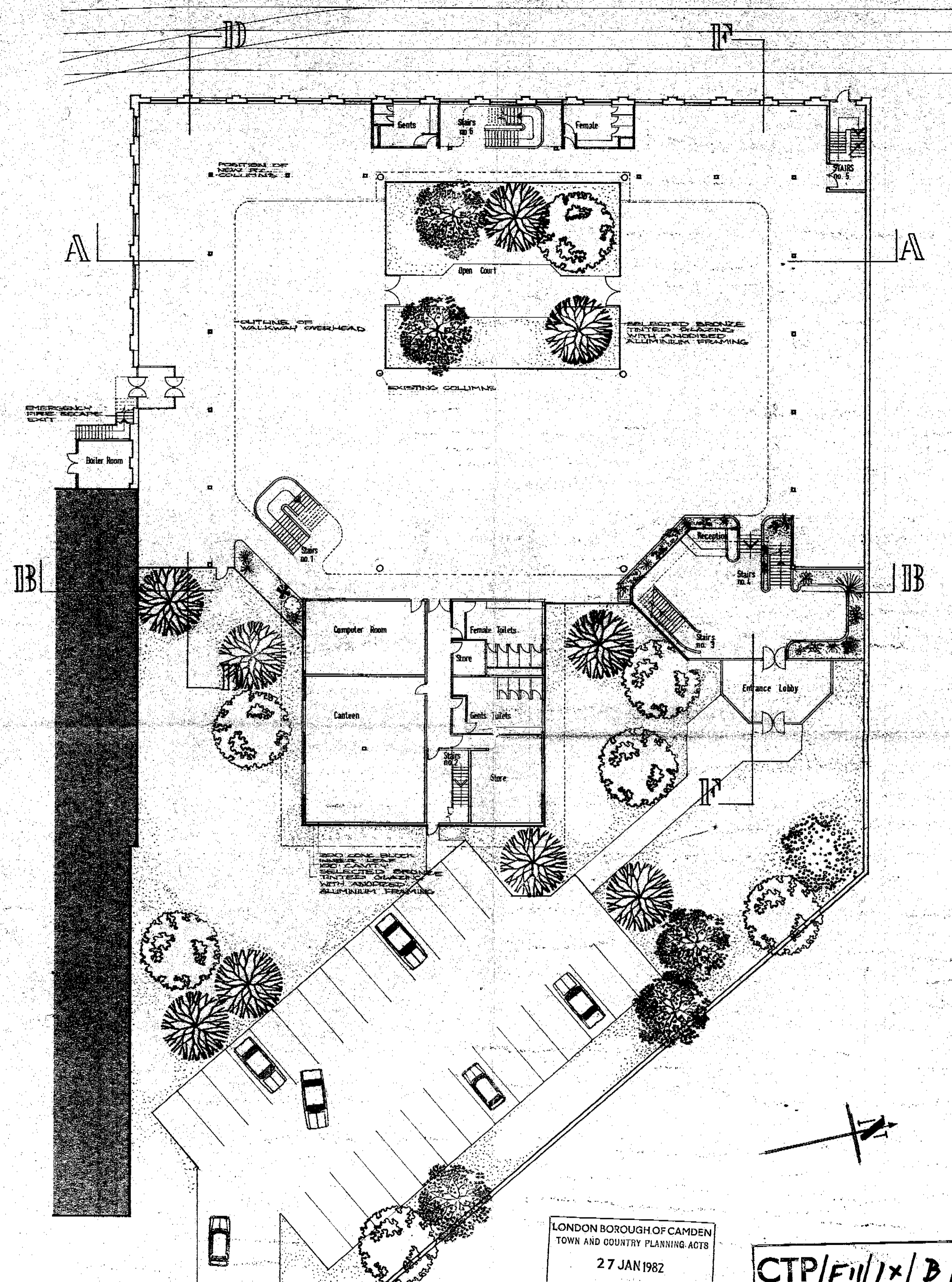
PROPOSED OFFICE DEVELOPMENT AT KENTISH TOWN LONDON	GROUND FLOOR PLAN, EAST ELEVATION & SECTION A-A	1:200	JULY 81
		SB57/10A	



SECTION A-A



EAST ELEVATION



GROUND FLOOR PLAN

LONDON BOROUGH OF CAMDEN
TOWN AND COUNTRY PLANNING ACTS
27 JAN 1982
PLANS APPROVED
ON BEHALF OF THE COUNCIL

CTP/F11/1x/B/3342

REVISIONS A - NOVEMBER 1981
NOTES ADDED, RECEPTION AREA CHANGED
STAIRS NO. 6 CHANGED POSITION
CORNER AREA CHANGED; ROOMS
RELOCATED

O'REILLY DESIGN & PLANNING SERVICES

ARCHITECTS & PLANNING CONSULTANTS, 40 ELGIN ROAD, BALLSBRIDGE, DUBLIN 4. Tel. 681288

PROPOSED OFFICE DEVELOPMENT
AT KENTISH TOWN
LONDON

GROUND FLOOR PLAN,
EAST ELEVATION &
SECTION A-A

1:200 JULY 81

OSD / ODA