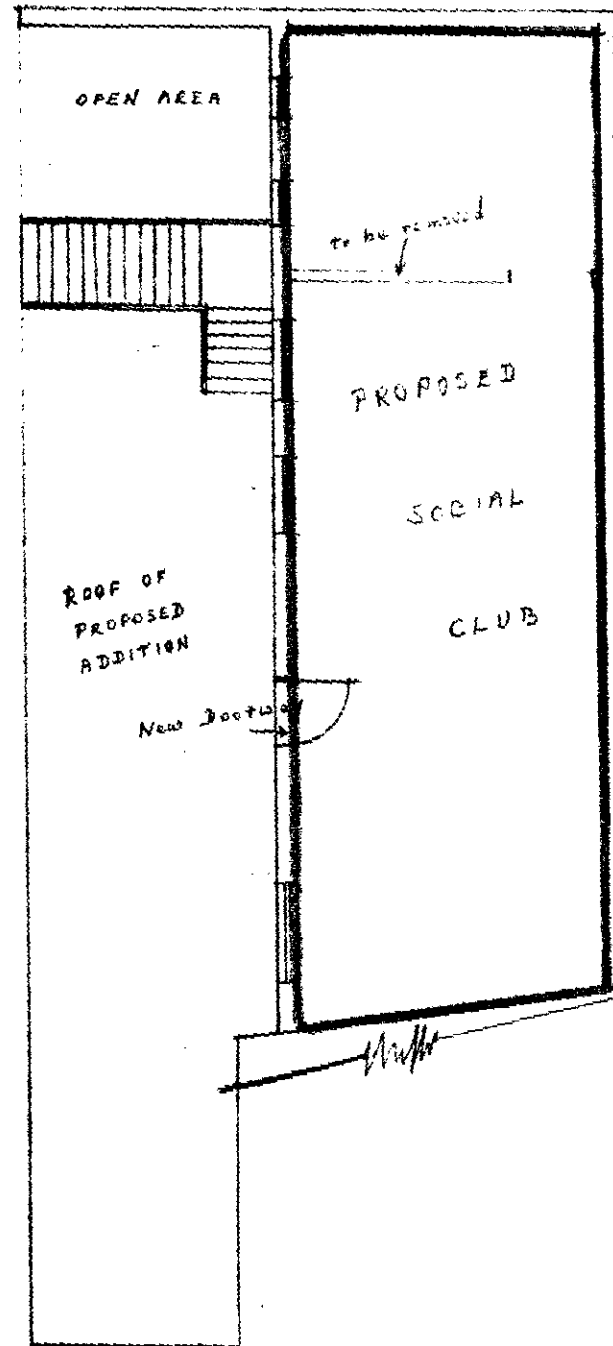
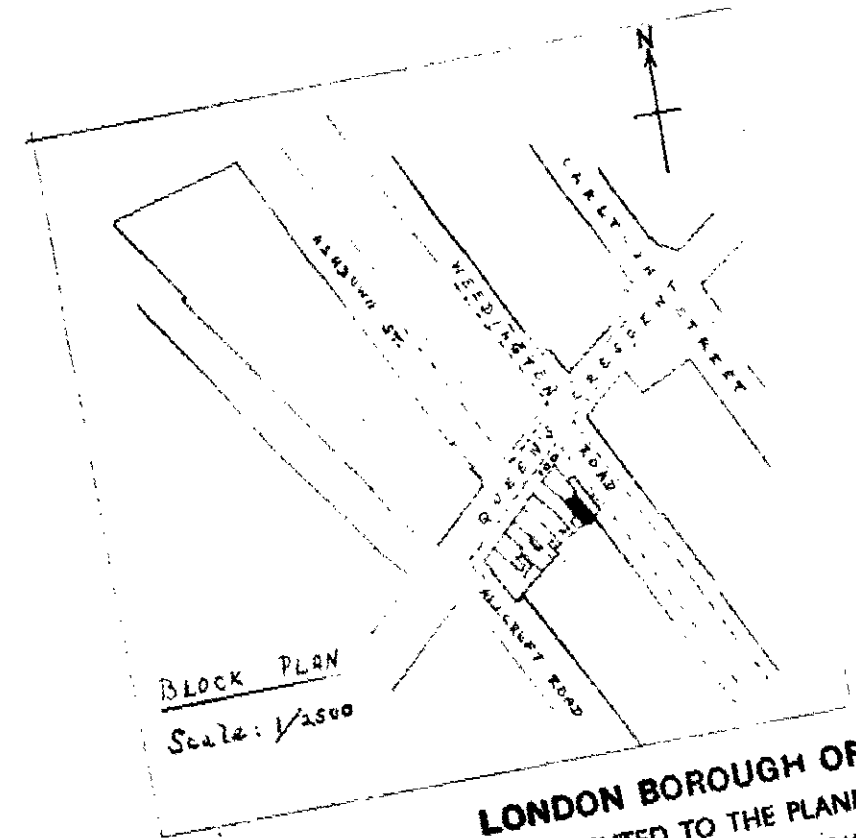


GROUND FLOOR PLAN



PART  
FIRST FLOOR PLAN



LONDON BOROUGH OF CAMDEN  
PRESENTED TO THE PLANNING AND  
DEVELOPMENT COMMITTEE/APPLICATIONS  
SUB-COMMITTEE ON 31 AUG 1966

CTP/F10/25/1/2195

TARN & TARN  
SURVEYORS  
202 BISHOPSGATE  
LONDON E.C.2.

JUNE 1966

PLAN SHOWING  
PROPOSED SOCIAL CLUB PREMISES & ENTRANCE WAY IN EXISTING FIRST FLOOR (REAR) AT  
NO 100 QUEENS CRESCENT N.W.5.