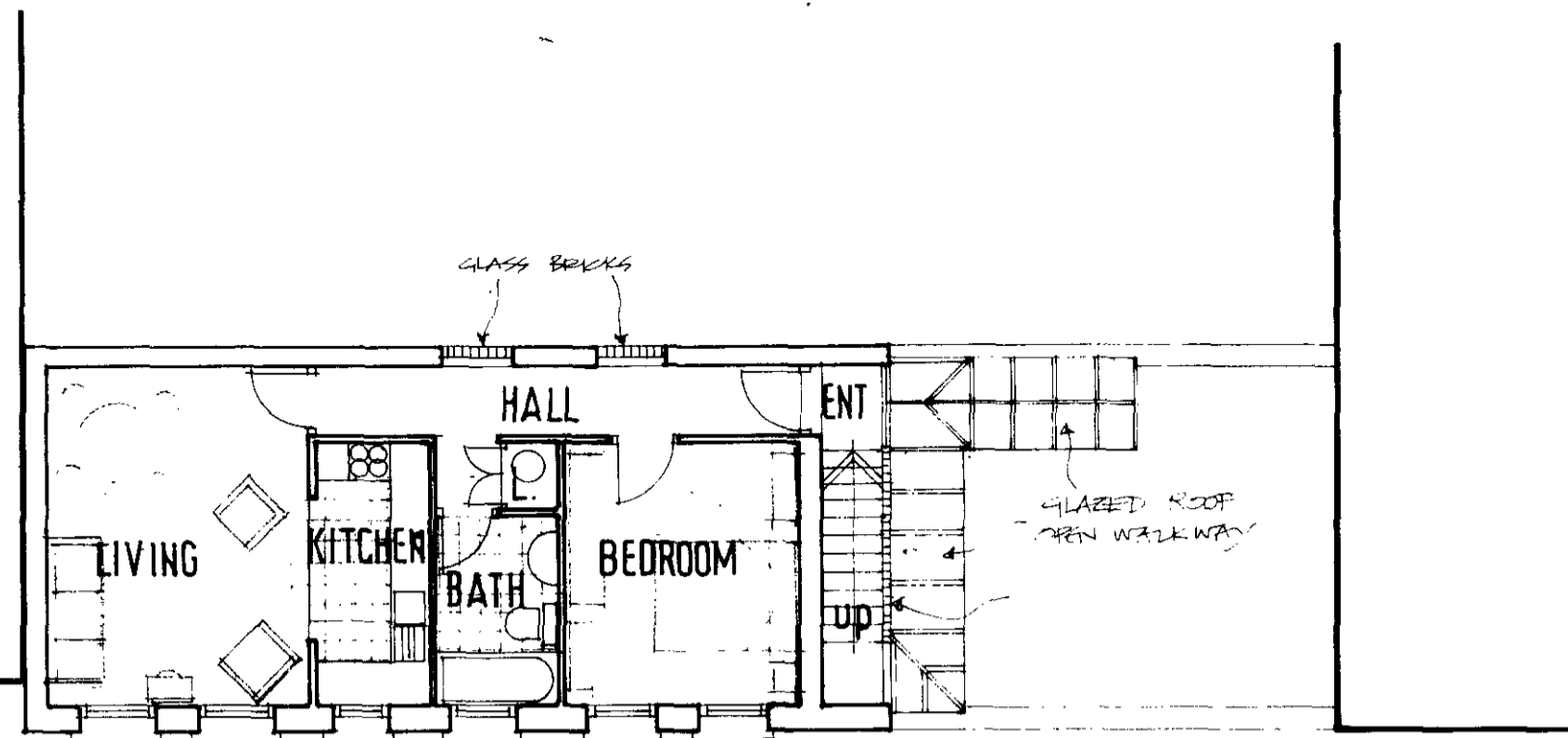


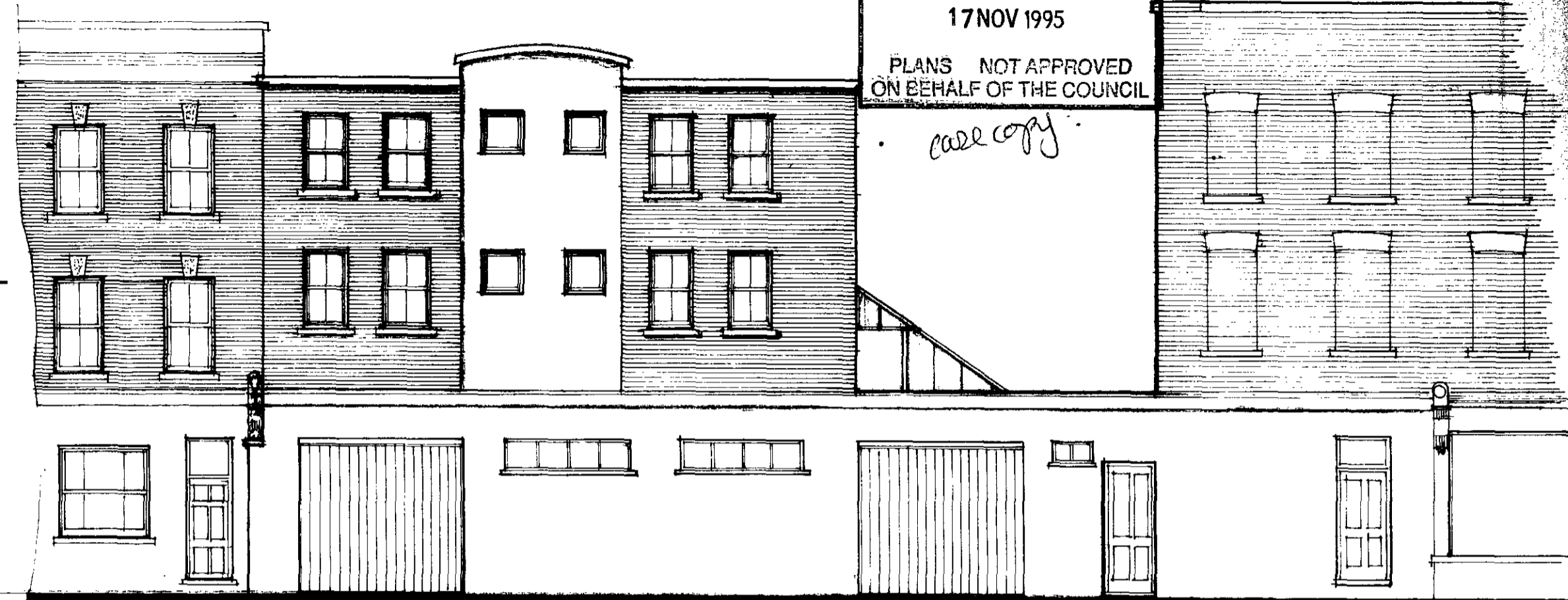
9500551

LONDON BOROUGH OF CAMDEN
TOWN AND COUNTRY PLANNING ACTS
17 NOV 1995
PLANS NOT APPROVED
ON BEHALF OF THE COUNCIL

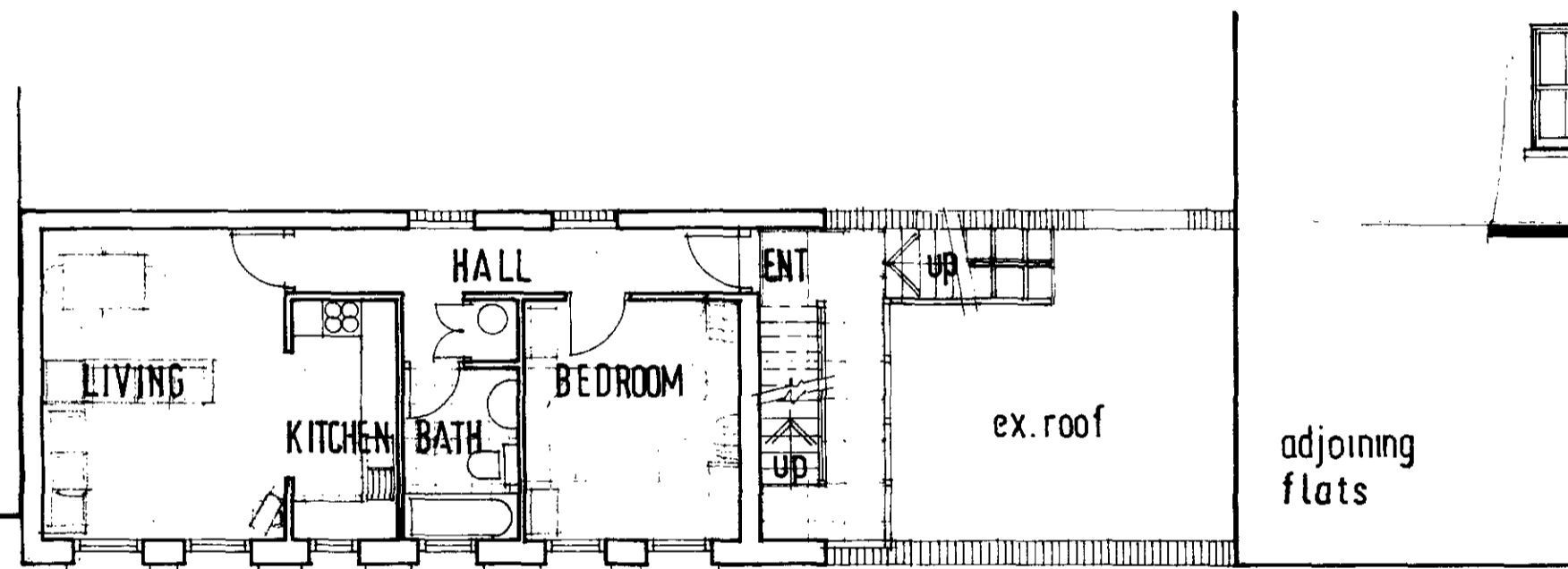
call copy



SECOND FLOOR



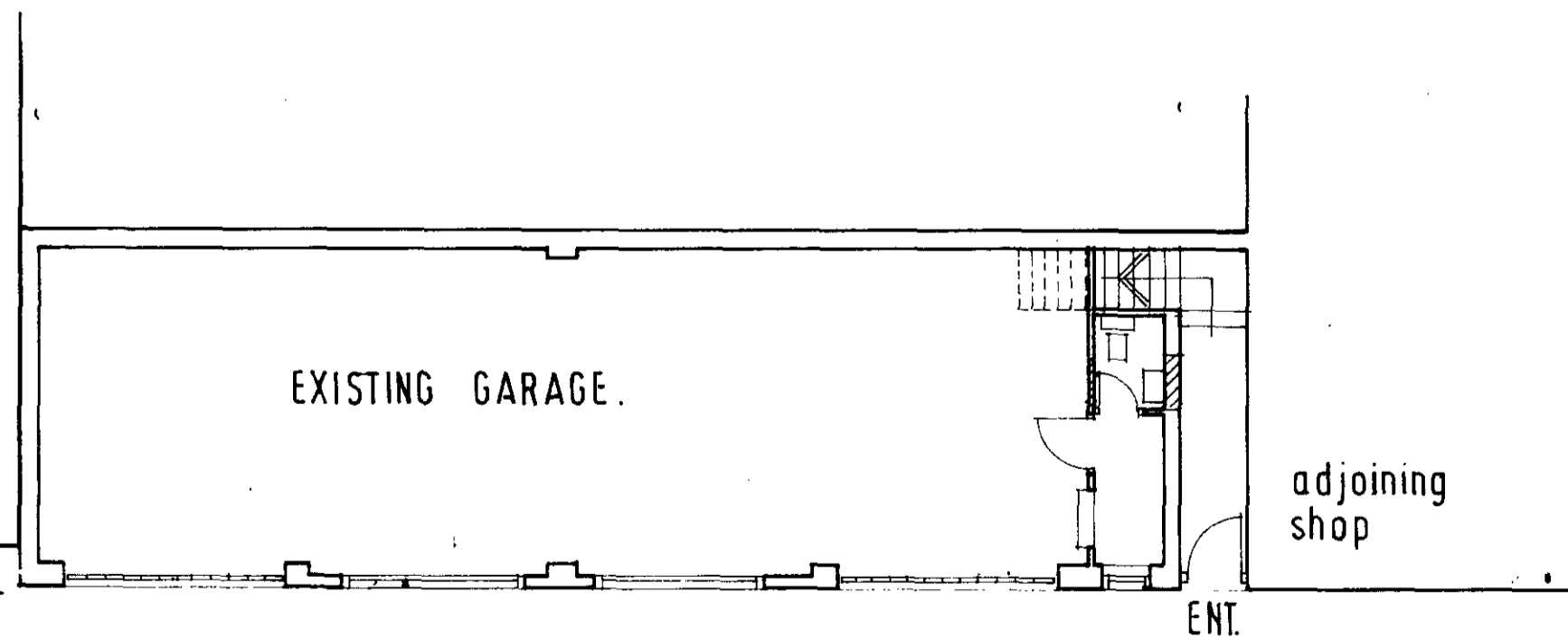
FRONT ELEVATION



FIRST FLOOR

adjoining house

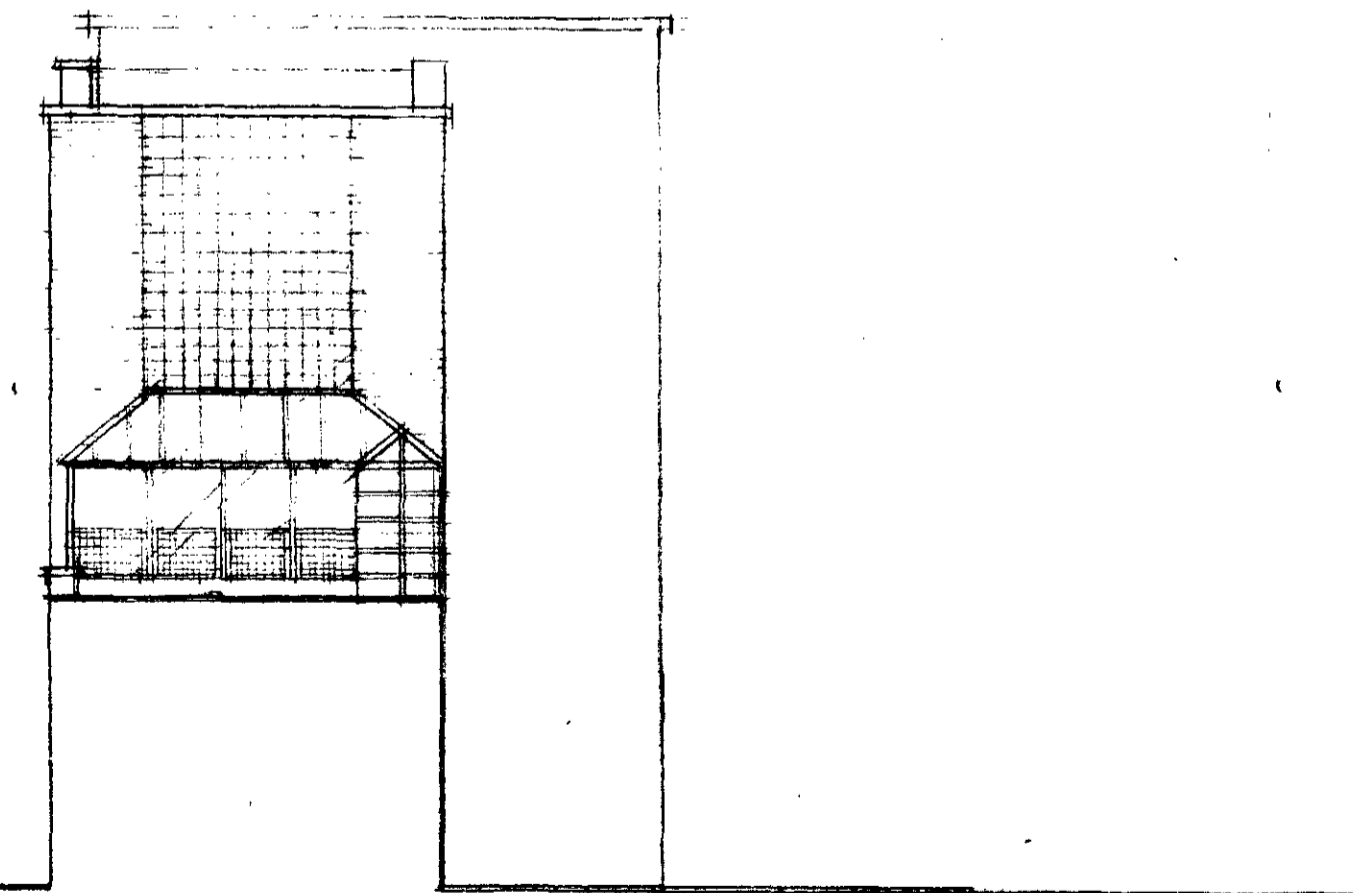
adjoining flats



GROUND FLOOR [existing]

adjoining house

adjoining shop



FLANK ELEVATION