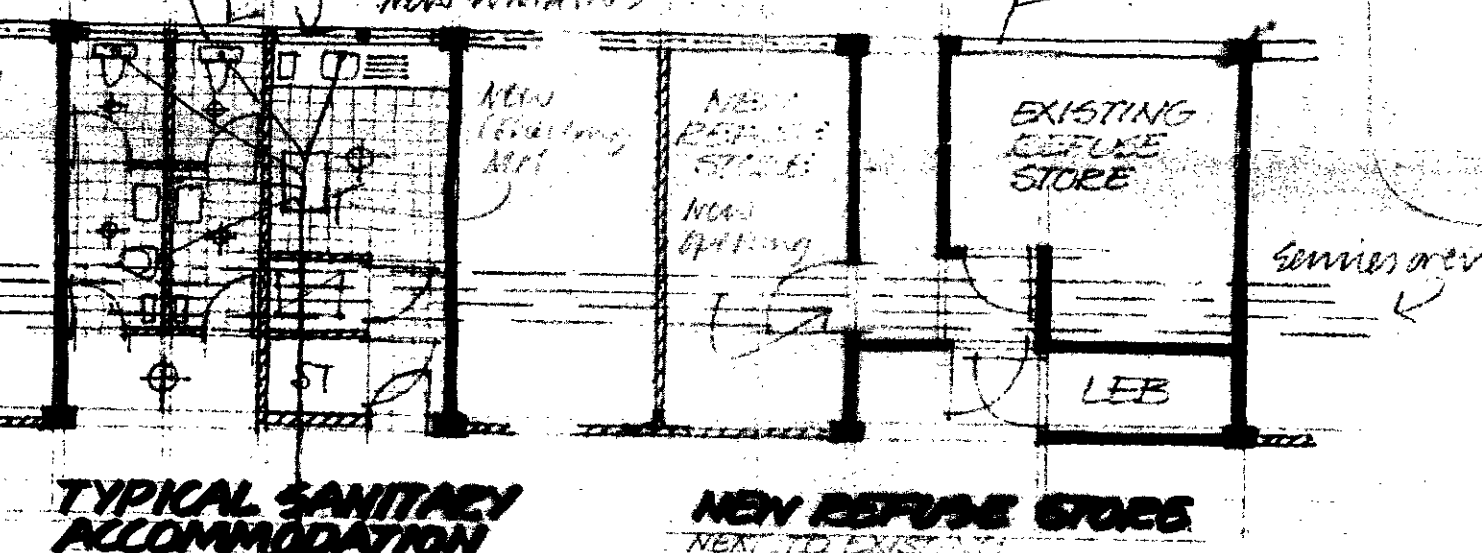


GROUND FLOOR PLAN

SPECIFICATION / WORKS REQUIRED

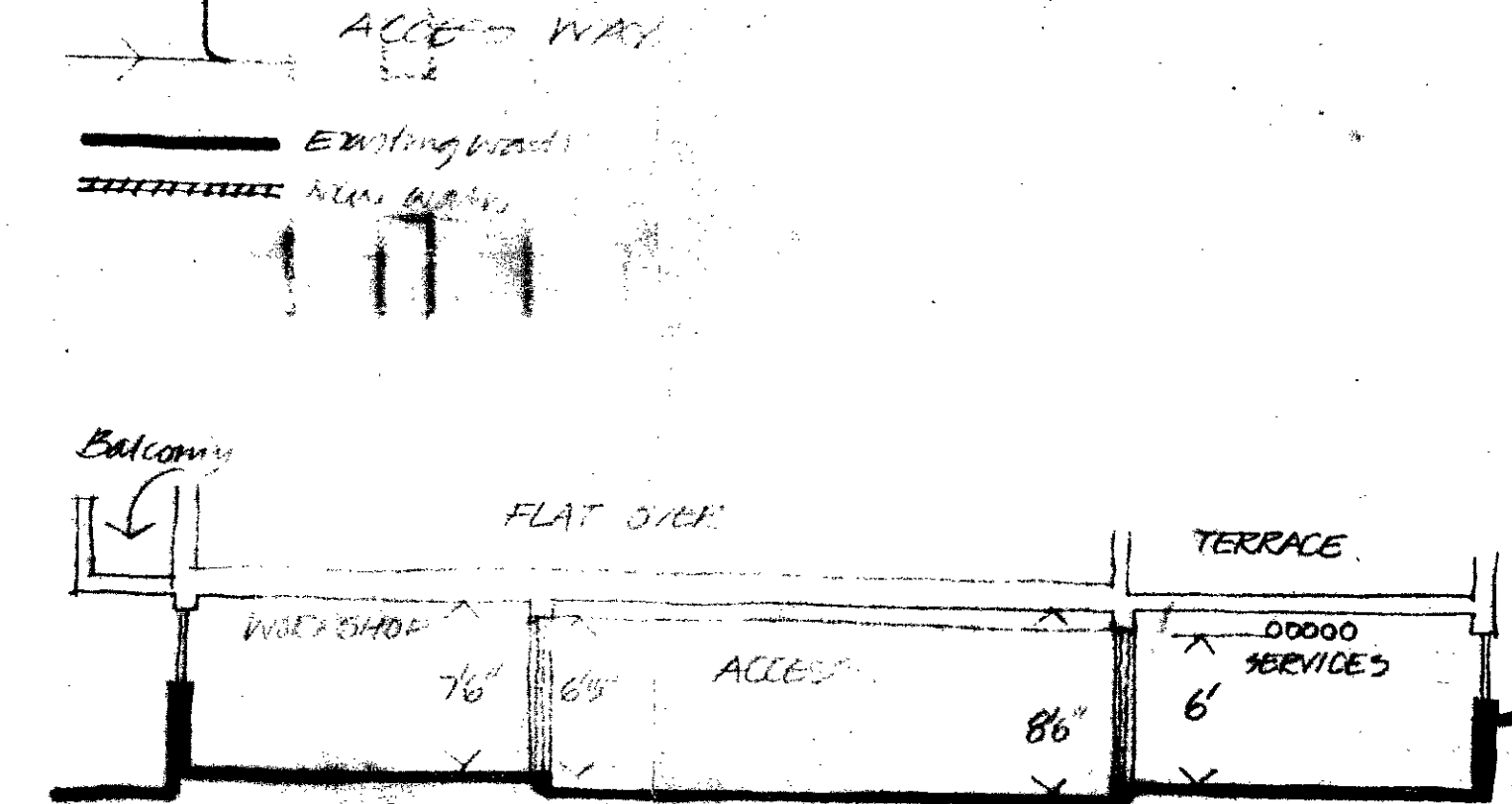
- 10 FLOORS
 - 1. Repair damaged 40mm Gravel with 13mm 15mm Gravel screenings.
 - 2. Cold applied bituminous waterproofing DPM and minimum 50mm 1:3 bituminous sand used to sanitary accommodation with the impervious tie film.
 - 3. With generally as existing. Tenant to provide screen of required.
- 2.0 WALLS
 - 1. 100mm brickwork to Access way, fair faced.
 - 2. Facing brickwork to main building, full height of building as indicated.
 - 3. 150mm solid masonry red brick walls opening approx 12" x 26" with opening casements & 2 fixed light.
 - * Allow for windows in GAR units and provide a unit lost.
 - 4. Existing sanitary screen retained to window areas.
 - 5. Doors to units to be 42mm FF self closing with brass GW polished plate viewing panel, down to door to each unit with rebated meeting stile.
 - 6. Walls in sanitary accommodation plastered.
- 3.0 SERVICES
 - 1. Lighting to Access way increased to 2NR tubes per bay. (at present, 2 NR per 3 bays)
 - 2. Light fittings in Sanitary accom. as shown.
 - 3. Lighting supply to each unit but tenant to install.
 - 4. Eng main with 4 NR double 50m each unit.
 - 5. New MH to collect drains for connection to existing.
 - 6. Allow for 6NR fire extinguishers and alarm system.
 - 7. Install new under headers to Sanitary Accom.

TYPICAL SECTION



TYPICAL SANITARY ACCOMMODATION

NEW REFUSE STORES



TYPICAL SECTION 1/8" = 1'

CASE COPY
 LONDON BOROUGH OF CAMDEN
 TOWN AND COUNTRY PLANNING ACTS
 23 SEP 1980
 PLANS APPROVED
 ON BEHALF OF THE COUNCIL

PLANNING AND COMMUNICATIONS
 DEPARTMENT
 CAMDEN
 27 AUG 1980

Revision		Date	
Q.S.	STR. ENG.		
	MECH. ENG.		
	ELEC. ENG.		

LETTABLE SPACE	
30 UNITS @ 25m ² = 750m ²	
2 UNITS @ 35m ² = 70m ²	
SERVICE FACILITIES	
SANITARY 2 UNITS @ 25m ² = 50m ²	
REFUSE 1 UNIT @ 25m ² = 25m ²	
CAR PARKING	
30 EXISTING SPACES = 12m ²	
	= 7.54m ²
TOTAL AREA OF CONVERSION UNITS + ACCOMMODATION = 901m ² (9085 ft ²) INCLUDING PARKING	

BOROUGH OF CAMDEN	
A Rigby, RS, MA, Dip TP (Lond), RIBA Director of Architecture Town Hall High Holborn WC1V 7BG Telephone 01-405 3411 ext.	
Job	Job no.
REDUNDANT CAR PARKS	
LIGHT INDUSTRIAL UNITS	
LUCHAM-GOSPOLE OAK	
drawing title	
PLANS & SPEC	
SCHEME 2	
Scale 1/32" = 1' @ 1/8"	Date 8/8/80
Drawn by CDH	Checked
Stage	S-729 SKA