

SECTION A-A

NOTES

THIS DRAWING IS TO BE READ IN CONJUNCTION WITH ENGINEERS DRAWINGS AND DETAILS.

AMENDMENTS

A	25-11-79	Amended to incorporate information from Engineers.
---	----------	--

LONDON BOROUGH OF CAMDEN  
TOWN AND COUNTRY PLANNING ACTS  
- 7 MAR 1979  
PLANS APPROVED  
NOT APPROVED  
ON BEHALF OF THE COUNCIL

CASE COPY.

FI/1/E/27949.

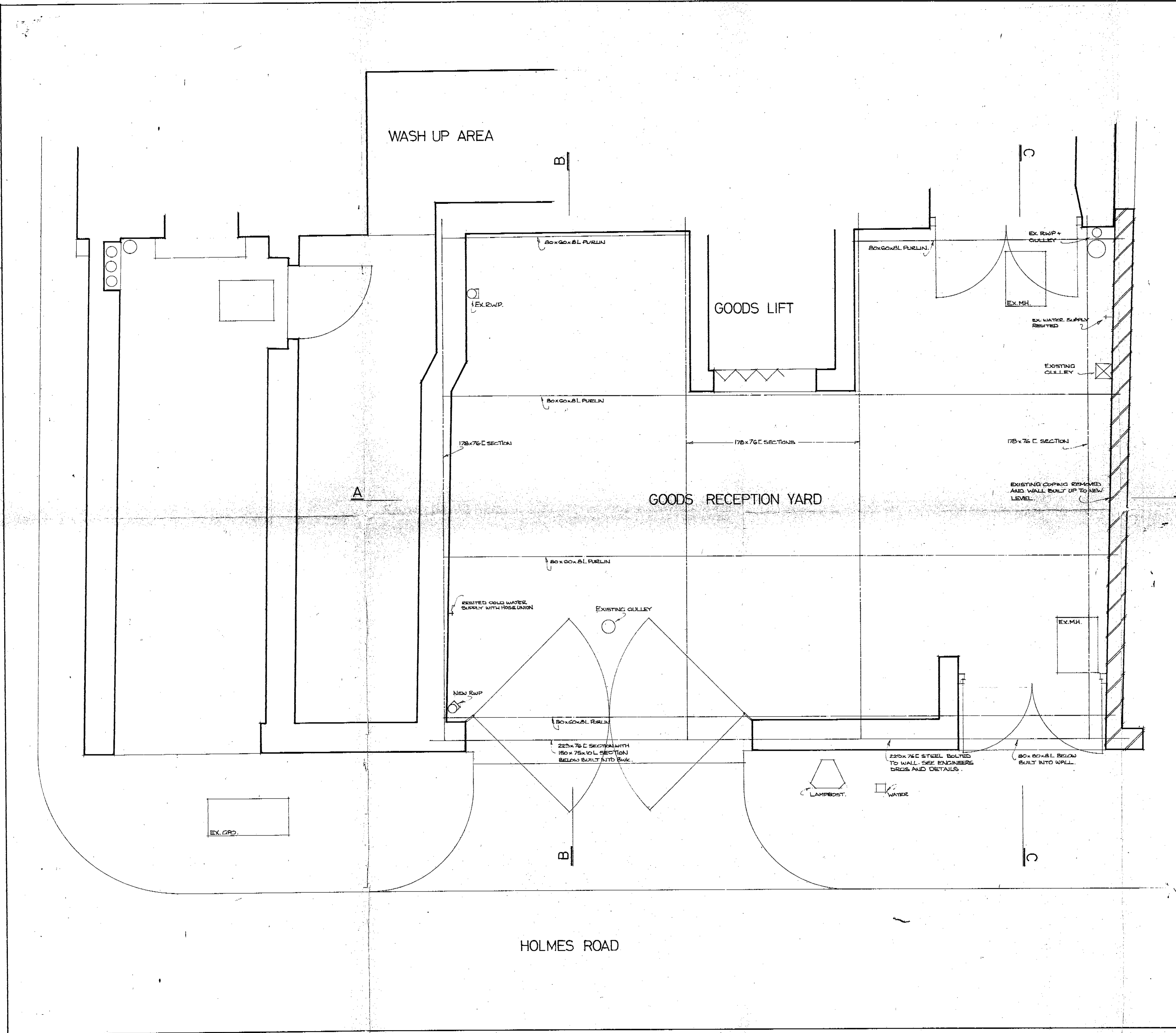
MARKS & SPENCER LTD.  
KENTISH TOWN.

NEW GOODS RECEPTION  
CANOPY.

S

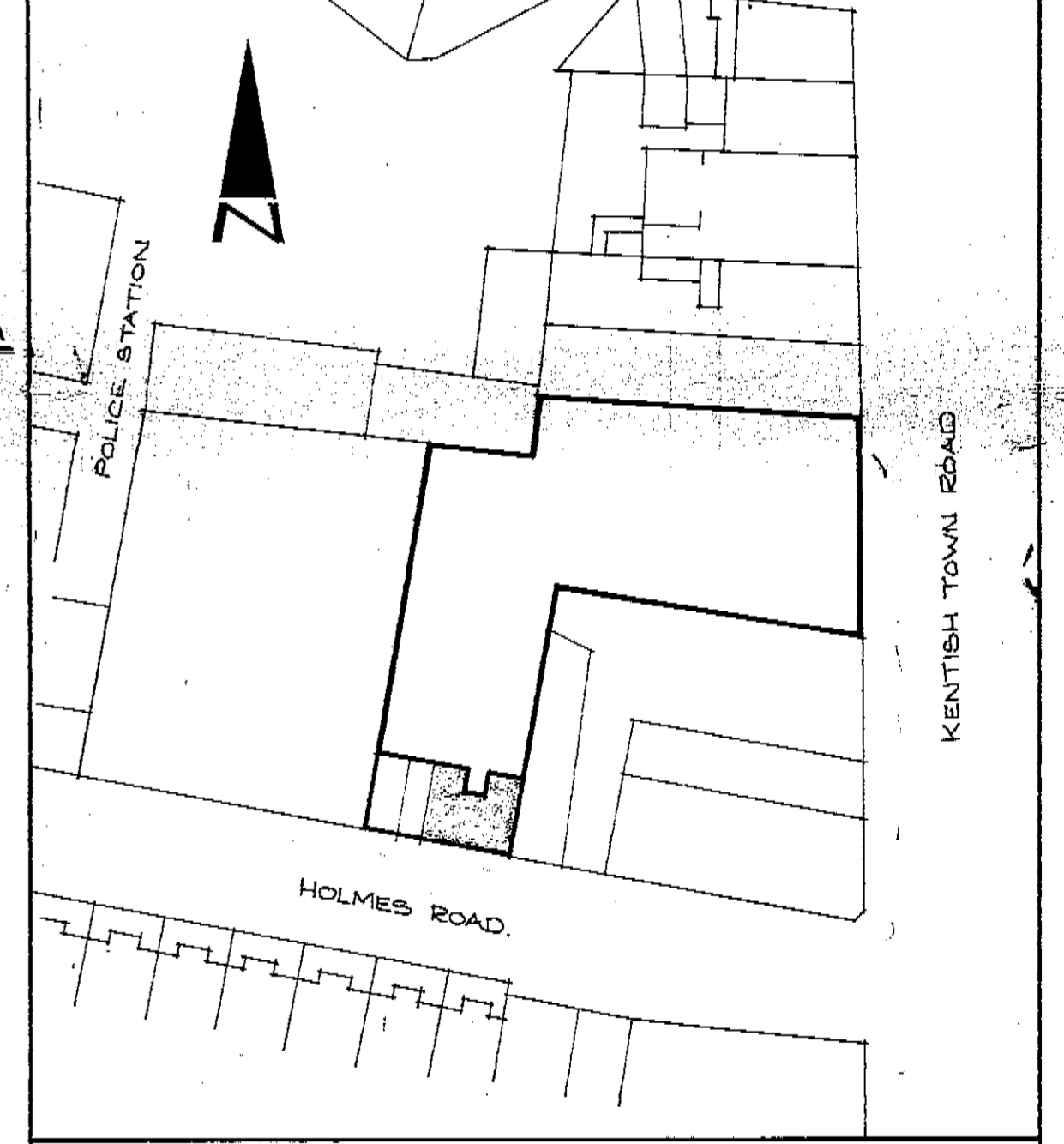
P.B. ASSOCIATES  
INCORPORATED SURVEYORS  
25 WARMINSTER ROAD  
LONDON, S.E.25, 4DL.  
TEL: 01-653 0990

SCALE: 1:20  
DATE: December 1978  
DRAWN: REC.  
DRGN: 78157/3. A.



**NOTES**  
 THIS DRAWING IS TO BE READ IN CONJUNCTION WITH ENGINEERS DRAWINGS AND DETAILS.

**SITE PLAN** 1:500



**AMENDMENTS**

A 23-1-79 Amended to incorporate information from Engineers

LONDON BOROUGH OF CAMDEN  
 TOWN AND COUNTRY PLANNING ACTS

- 7 MAR 1979

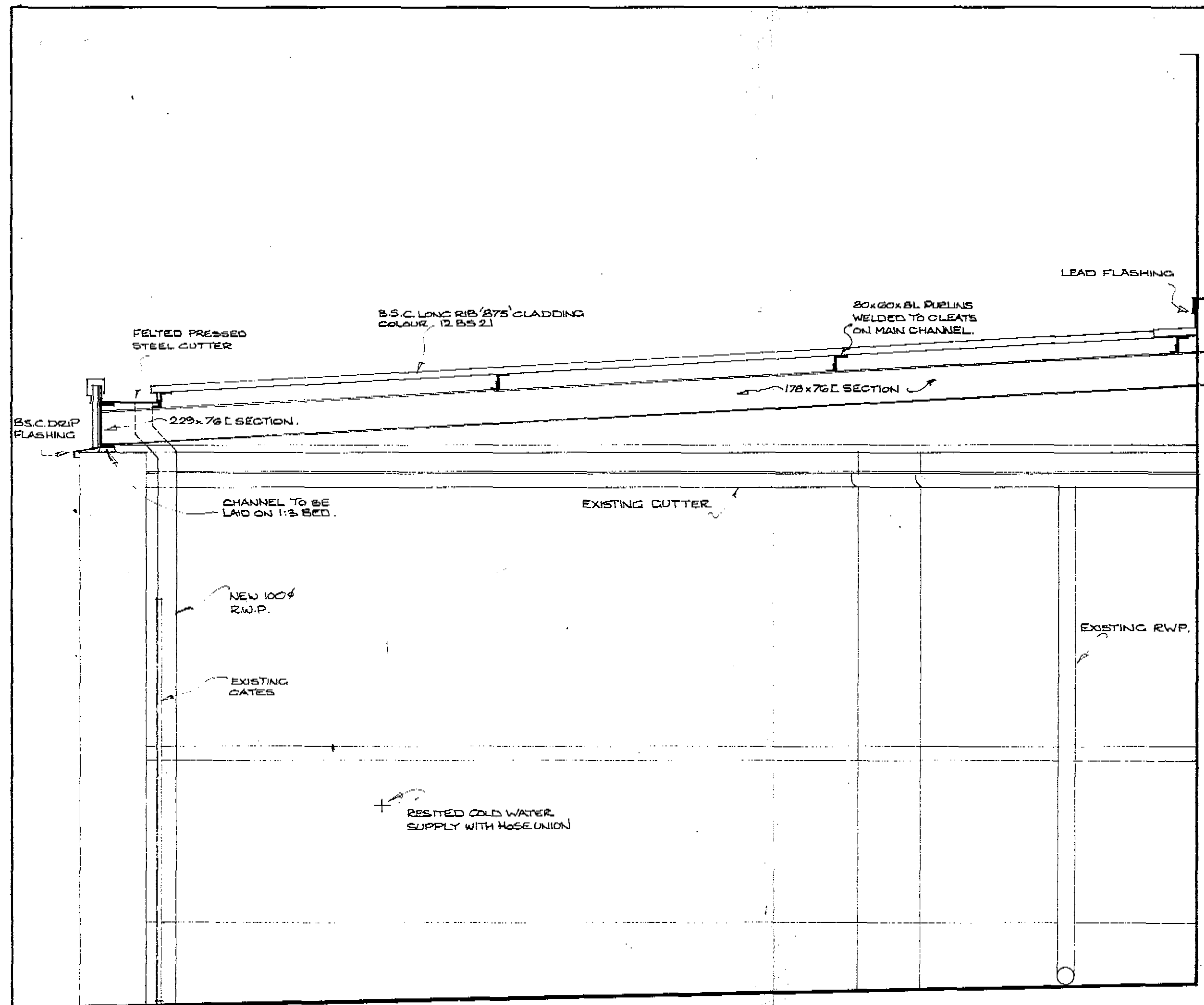
PLANS APPROVED  
 ON BEHALF OF THE COUNCIL

**CASE COPY**  
 F11 / E / 27149

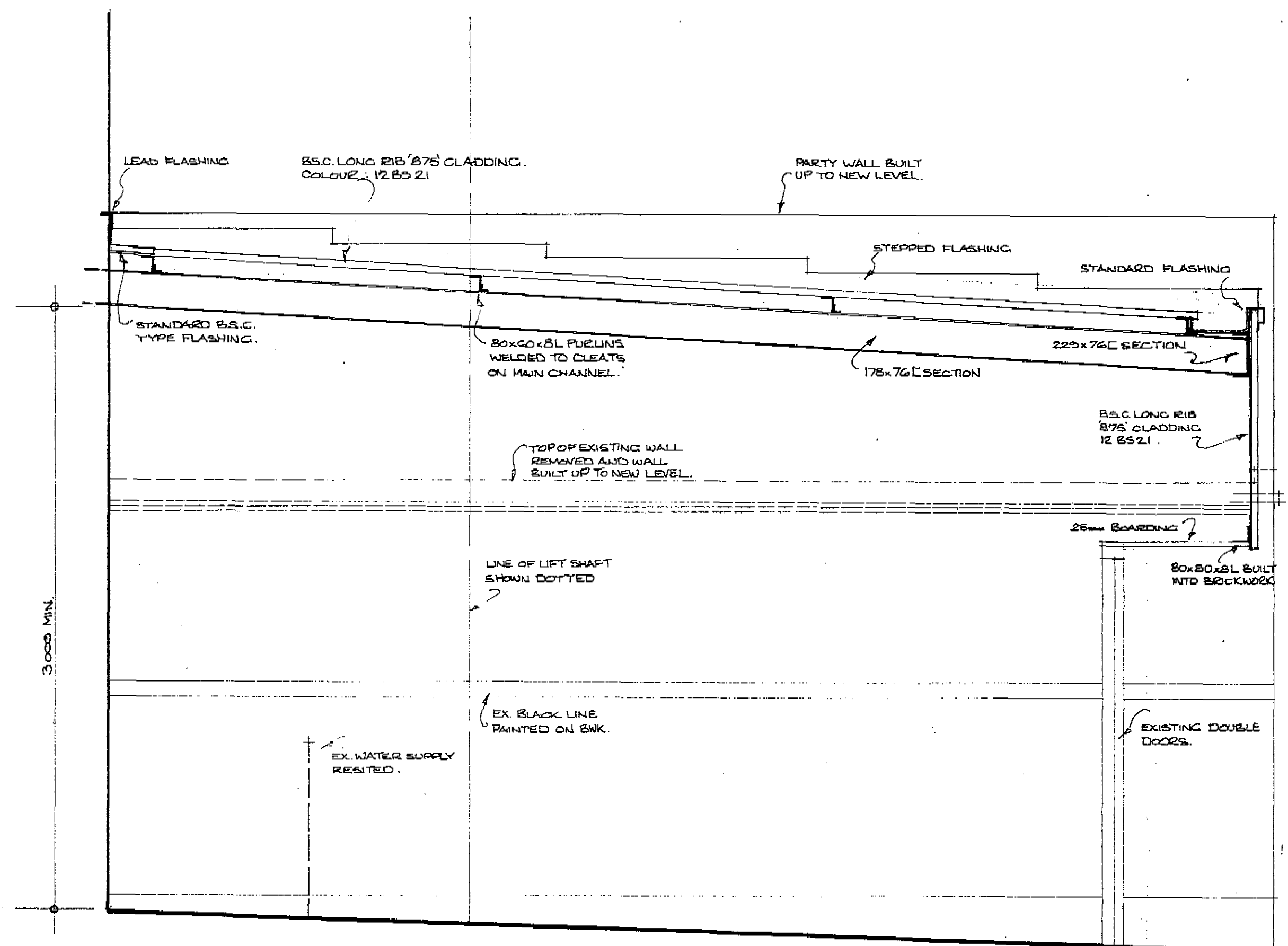
**MARKS & SPENCER LTD.**  
**KENTISH TOWN.**  
**NEW GOODS RECEPTION CANOPY** G

PB ASSOCIATES.  
 INCORPORATED SURVEYORS.  
 25 WARMINSTER ROAD.  
 LONDON. SE25 4DL.  
 TEL: 01-653 0990

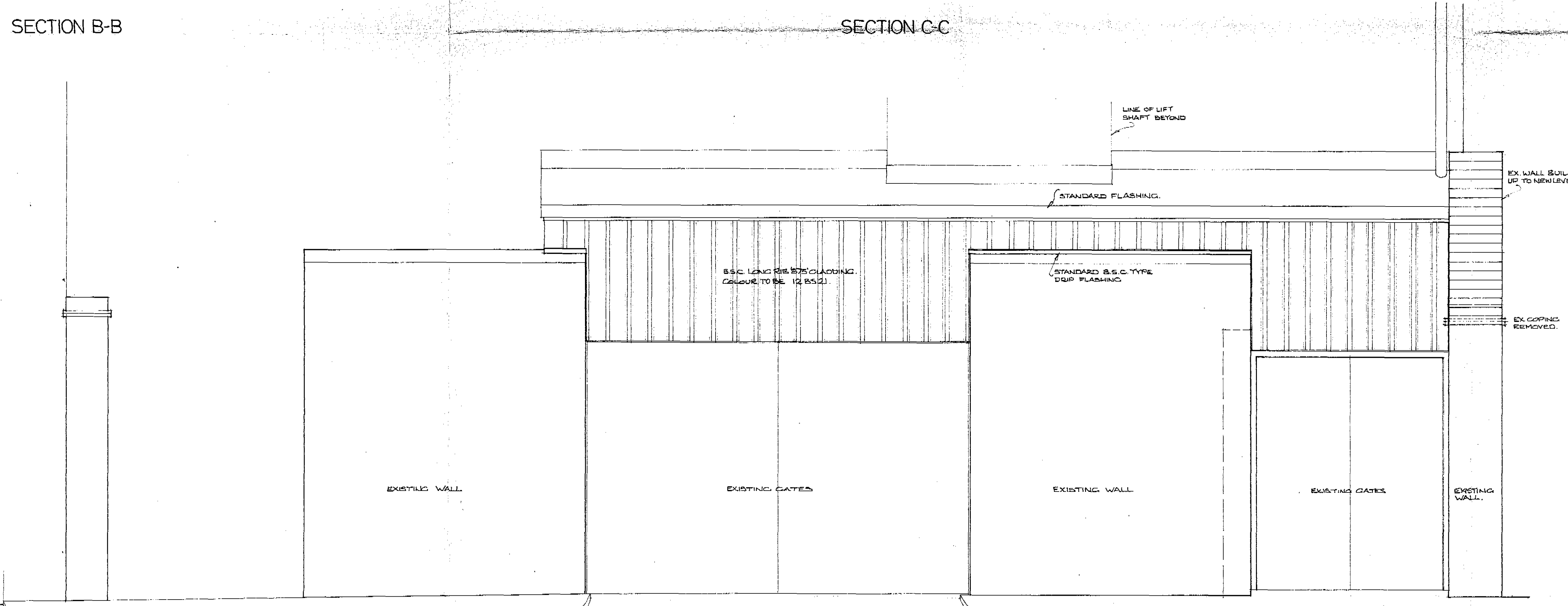
SCALE: 1:20  
 DATE: December 1978  
 DRAWN: REC.  
 DRAWN: 78157/1.A.



SECTION B-B



SECTION C-C



ELEVATION TO FRONT WALL

NOTES

THIS DRAWING TO BE READ IN CONJUNCTION WITH ENGINEERS DRAWINGS AND DETAILS.

AMENDMENTS

A 23-1-79 Amended to incorporate information from Engineers

LONDON BOROUGH OF CAMDEN  
TOWN AND COUNTRY PLANNING ACTS  
- 7 MAR 1979  
PLANS APPROVED  
ON BEHALF OF THE COUNCIL  
CASE COPY  
F11/1/E/27949.

MARKS & SPENCER LTD.  
KENTISH TOWN.  
NEW GOODS RECEPTION  
CANOPY E+S

P.B. ASSOCIATES  
INCORPORATED SURVEYORS  
25 WARMINSTER ROAD  
LONDON SE25 4DL  
TEL: 01-653 0990  
SCALE: 1:20  
DATE: December 1978  
DRAWN: REC.  
DRCN: 78157/2A