

Drawing Number

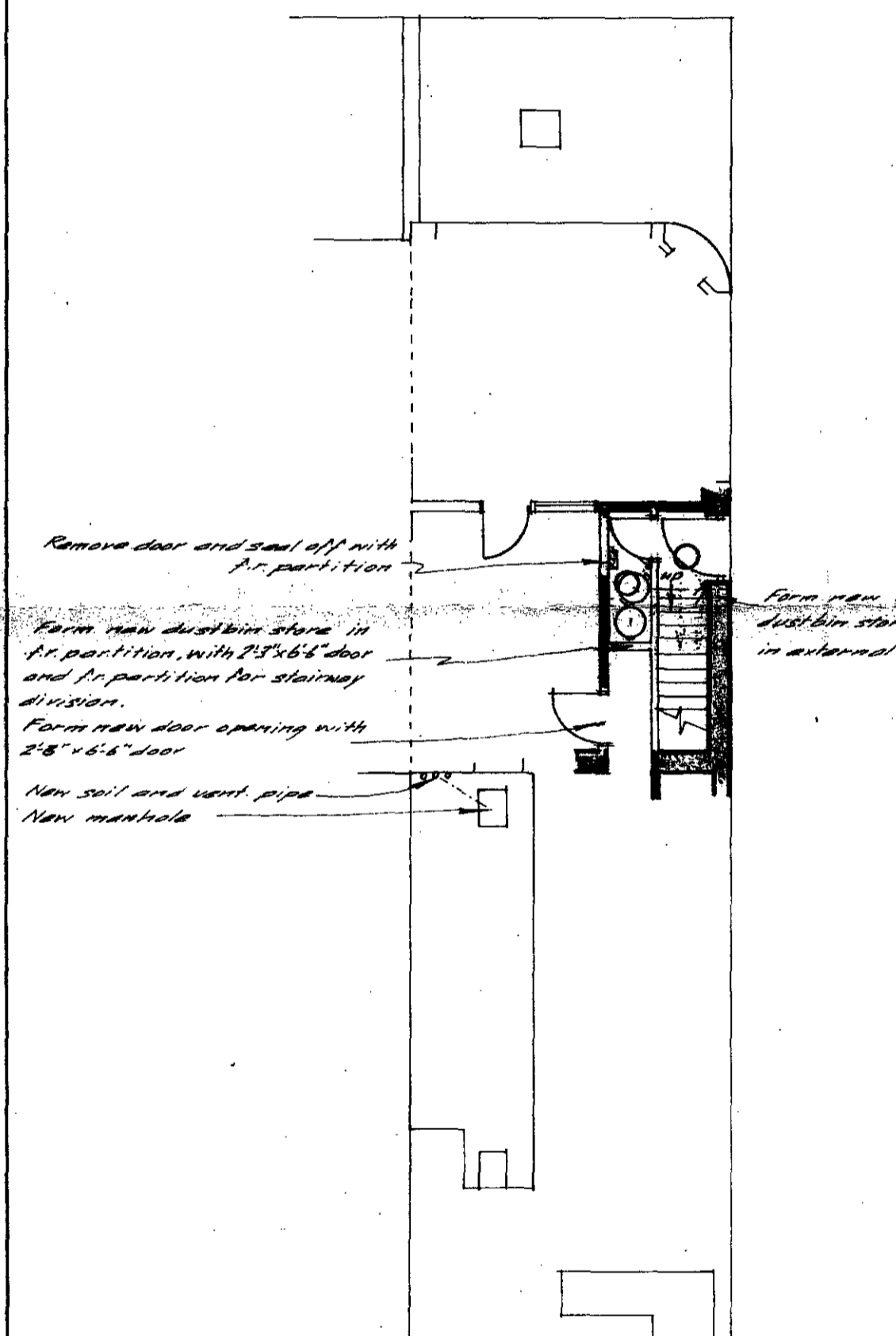
Rev Date Drawn

Key to Electrical Installation

- Lighting Point
- Double socket outlet
- Cooker point
- Consumer Control Unit
- Sada UDB 20
- Lighting switch

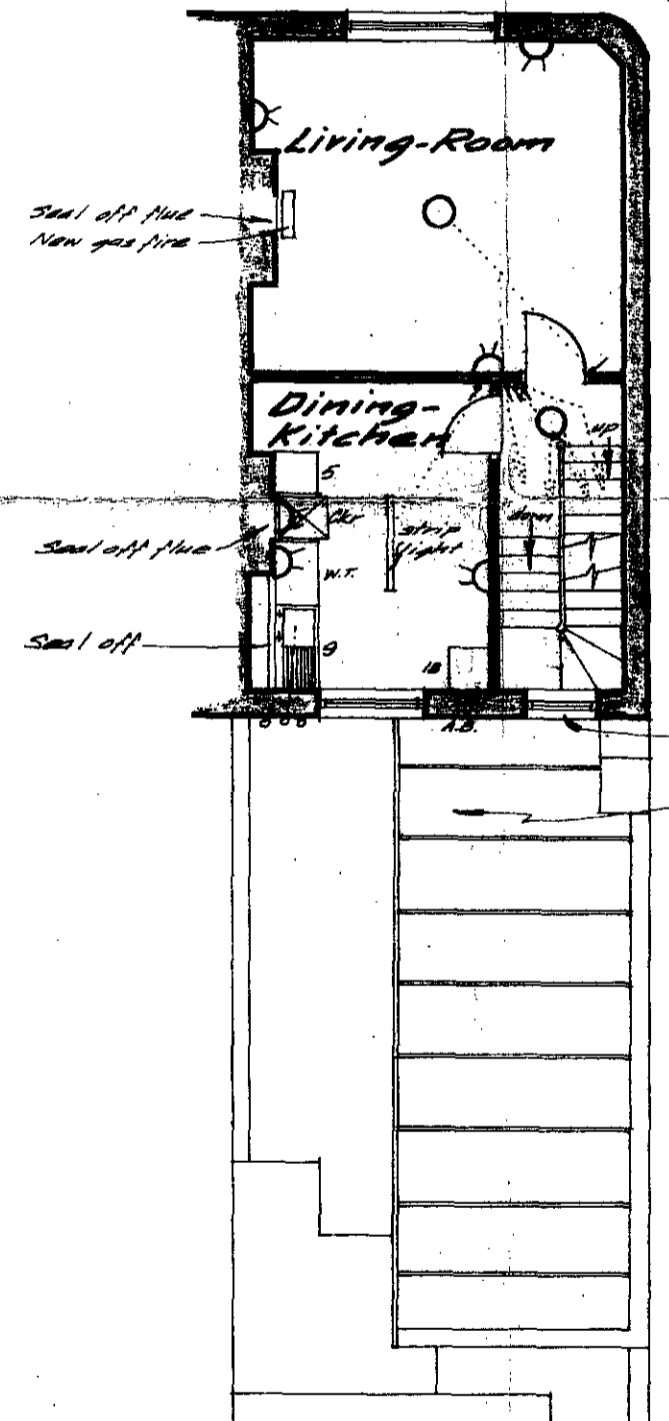
Notes: - Kitchen unit numbers refer to those supplied by London Housing Development Group.
New sanitaryware throughout.

Accommodation - One Bedroom Maisonette

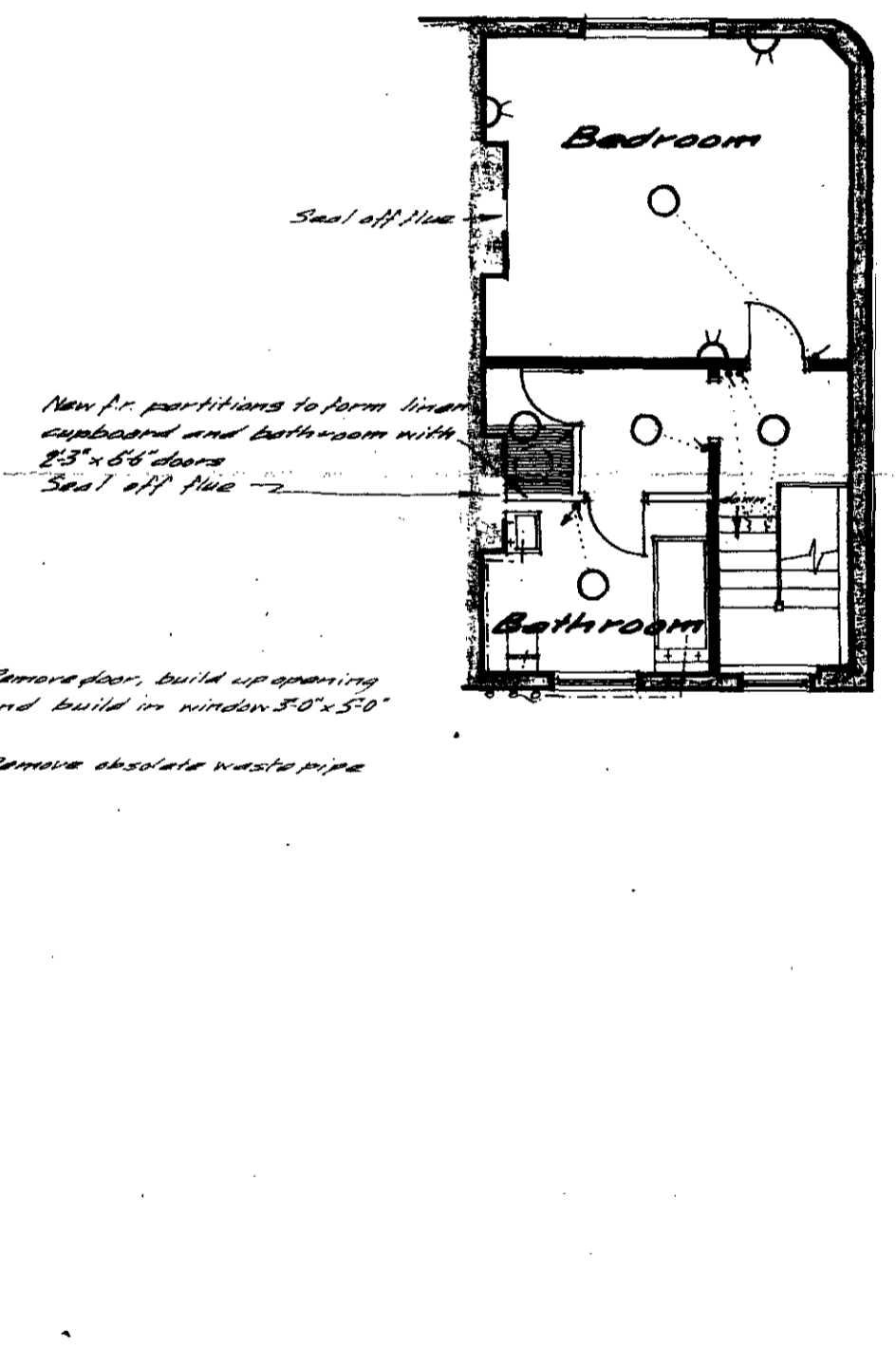


Ground Floor

Note: - Maintenance work and/or improvement work to ground floor, apart from that shown above necessitated by entrance to flat on first and second floors, to be specified and arranged by Housing Dept.



First Floor



Second Floor

BOROUGH OF CAMDEN

S A G Cook ARIBA
Borough Architect
Town Hall High Holborn WC1
Telephone HOLborn 3411 ext 23

Job
50, Leverton Street, N.W.5.

Drawing Title
CIP/F12/8/2/2409
Flats as Proposed

LONDON BOROUGH OF CAMDEN
PRESENTED TO THE PLANNING AND
DEVELOPMENT COMMITTEE, APPLICATIONS
SUB COMMITTEE ON **31 AUG 1966**
Vice Chair

Scale
1/8" = 1'-0"

Date *4.5.66*
Drawn *a.h.w.*

Drawing Number
4/HE/120/C