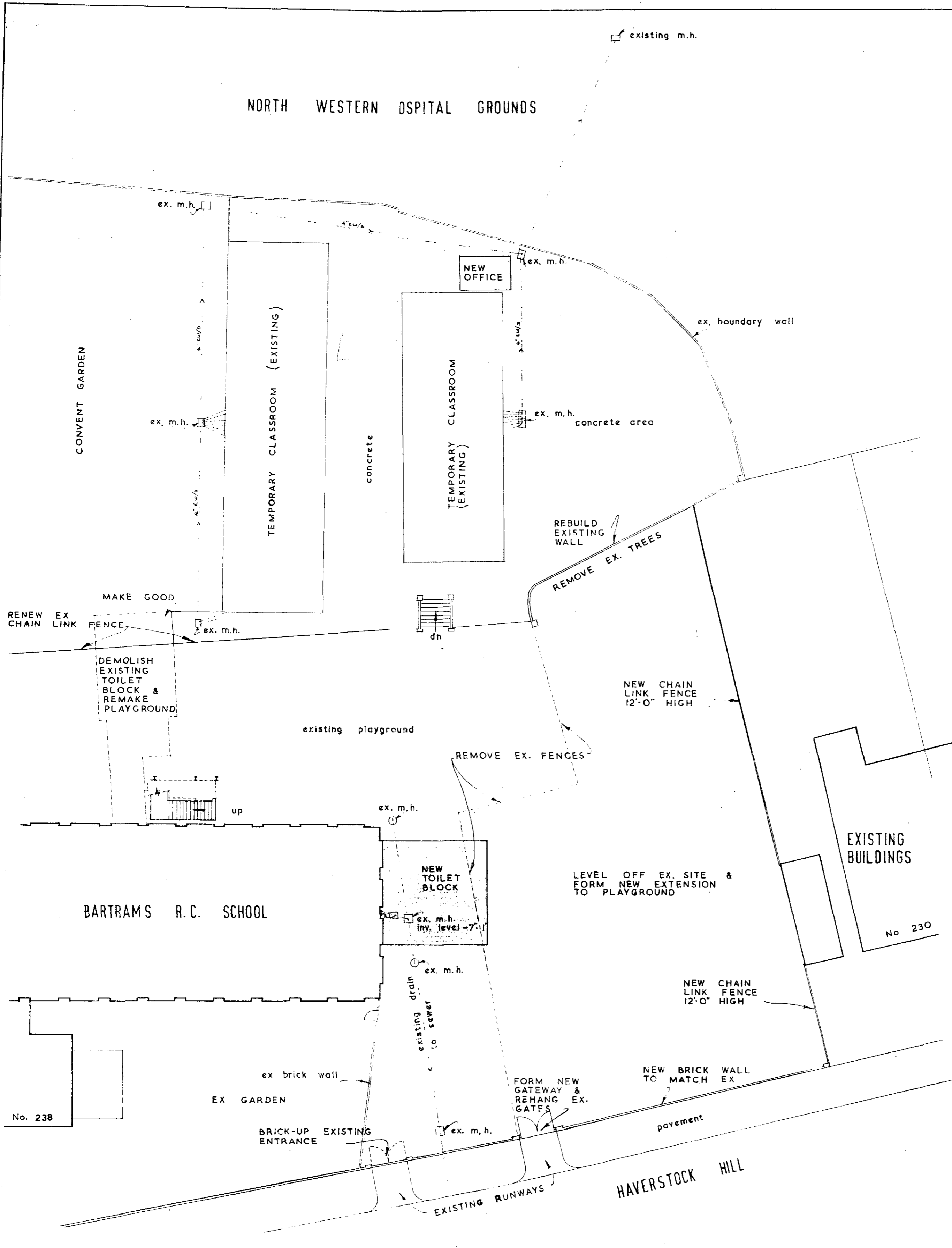


NORTH WESTERN HOSPITAL GROUNDS



Notes

Revisions

LONDON BOROUGH OF CAMDEN
 PRESENTED TO THE PLANNING AND
 DEVELOPMENT COMMITTEE APPLICATIONS
 SUB-COMMITTEE ON 18 JUN 1966

PROPOSED PLAYGROUND
 EXTENSION & NEW
 TOILET BLOCK & OFFICE

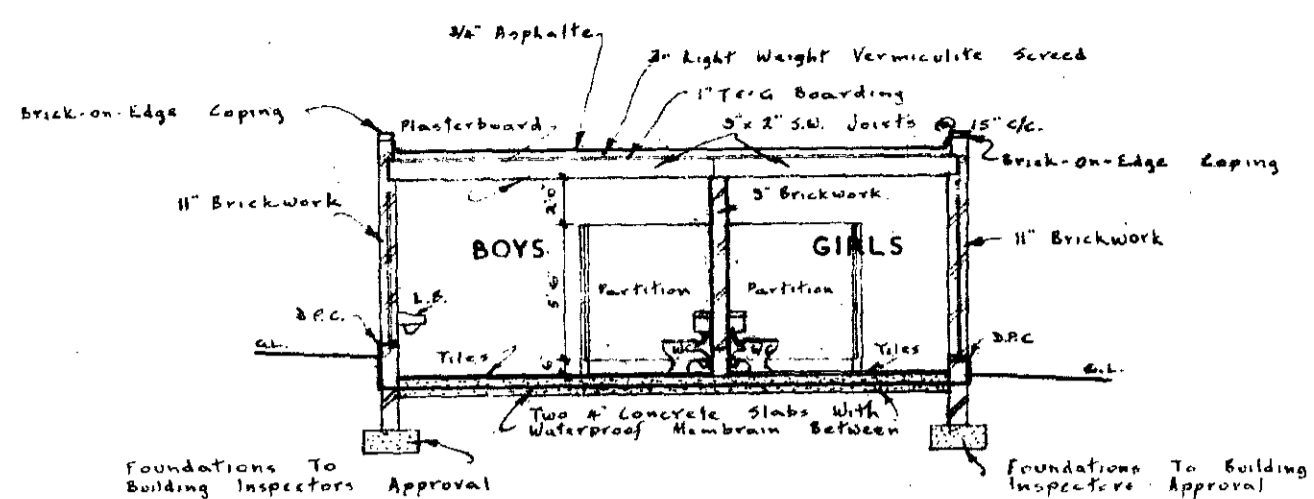
BARTRAMS R.C.
 CONVENT SCHOOL
 HAVERSTOCK HILL
 LONDON N.W. 3.

Drg. No. :- BC/HH/66/1
 Scale :- 16'-0" to 1"
 Date :- April 1966

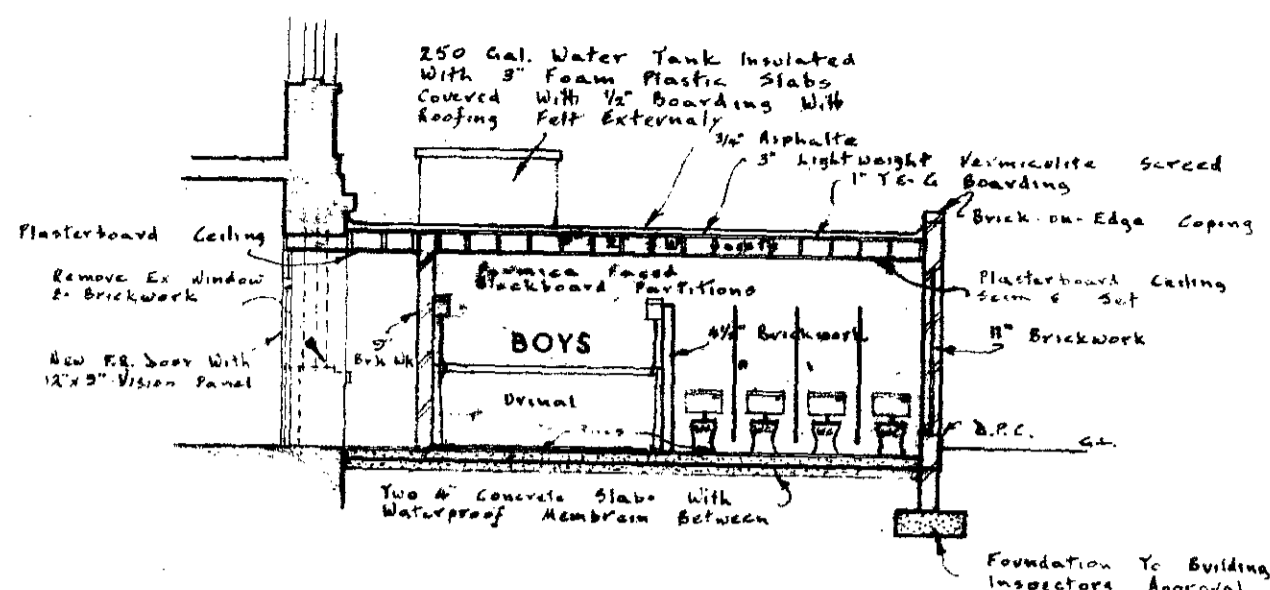
ROBERT SHARP & SON
 CHARTERED ARCHITECTS
 No 81 CHESTER SQUARE
 LONDON S.W. 1.

CTP/F8/7/2/1936

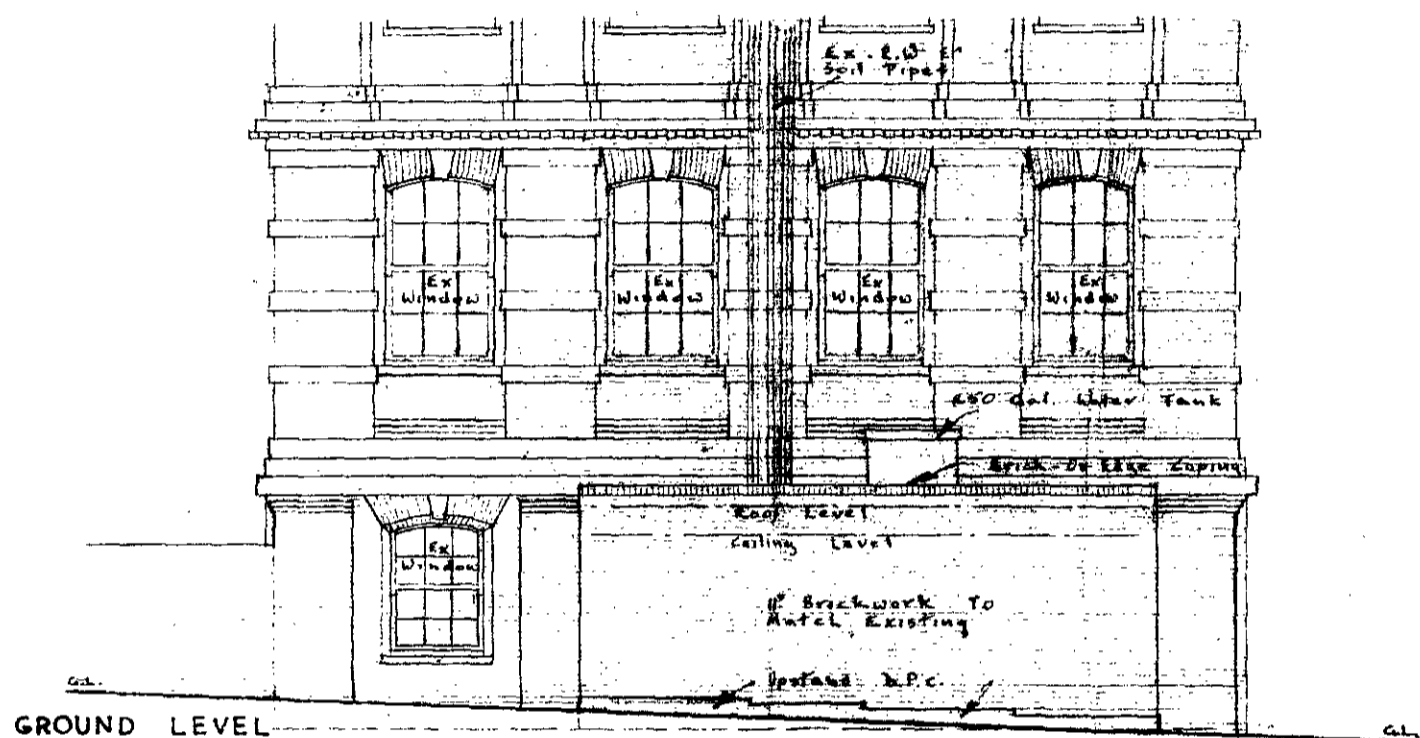
Notes



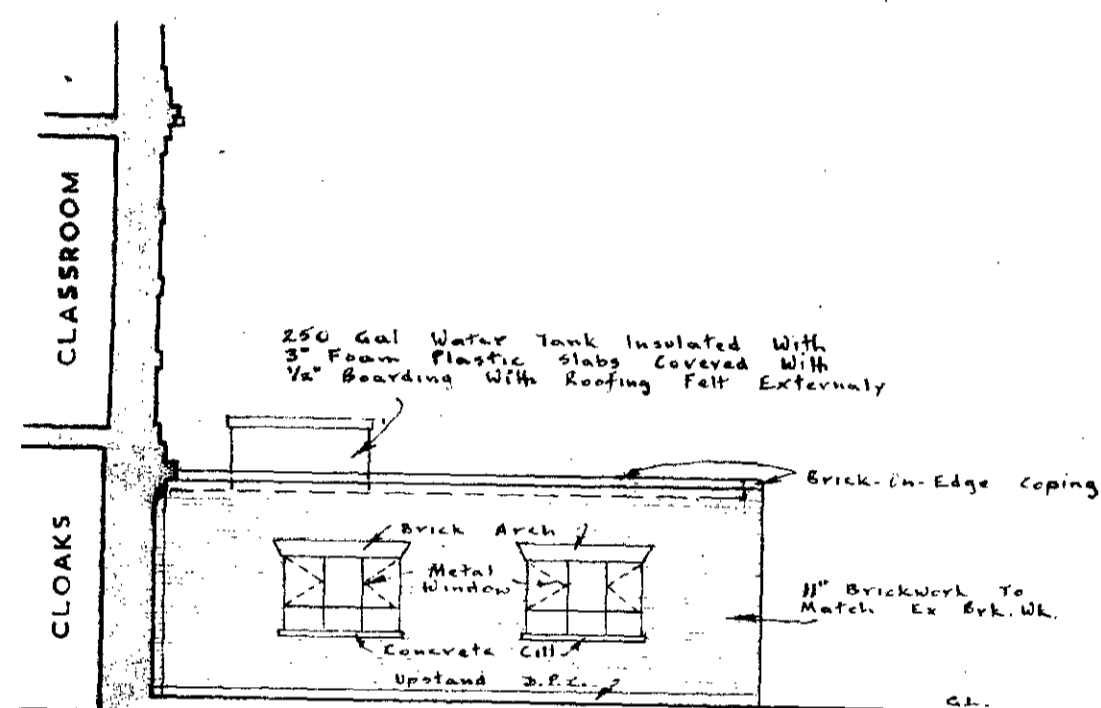
SECTION A-A



SECTION B-B



END ELEVATION



TYPICAL SIDE ELEVATIONS

Revisions

- A Brick on edge coping added to side elevations

LONDON BOROUGH OF CAMDEN
PRESENTED TO THE PLANNING AND
DEVELOPMENT COMMITTEE APPLICATIONS
SUB-COMMITTEE ON 8 JUN 1966

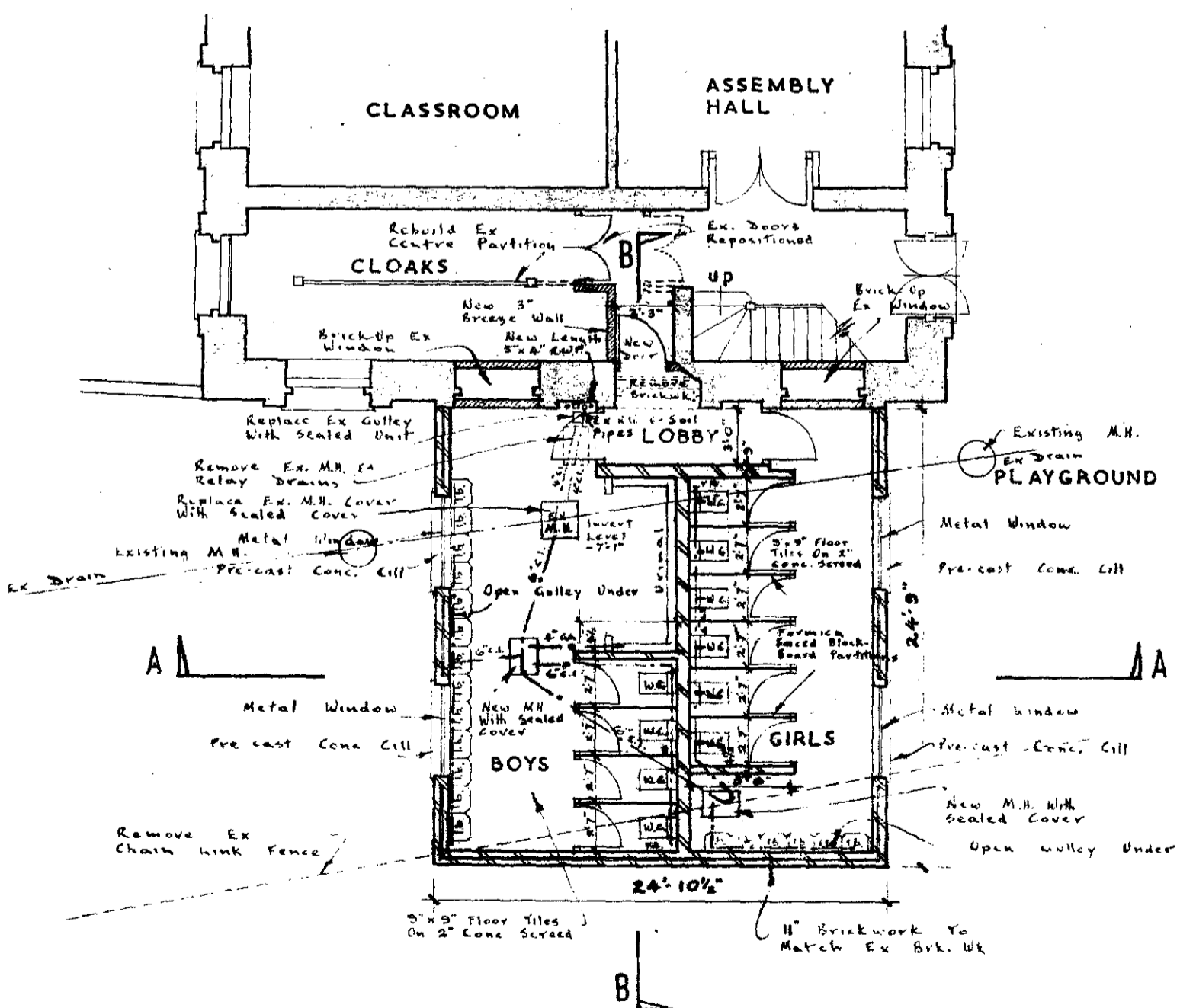
CTP/F8/7/2/1936(9)

PROPOSED NEW
TOILET BLOCK

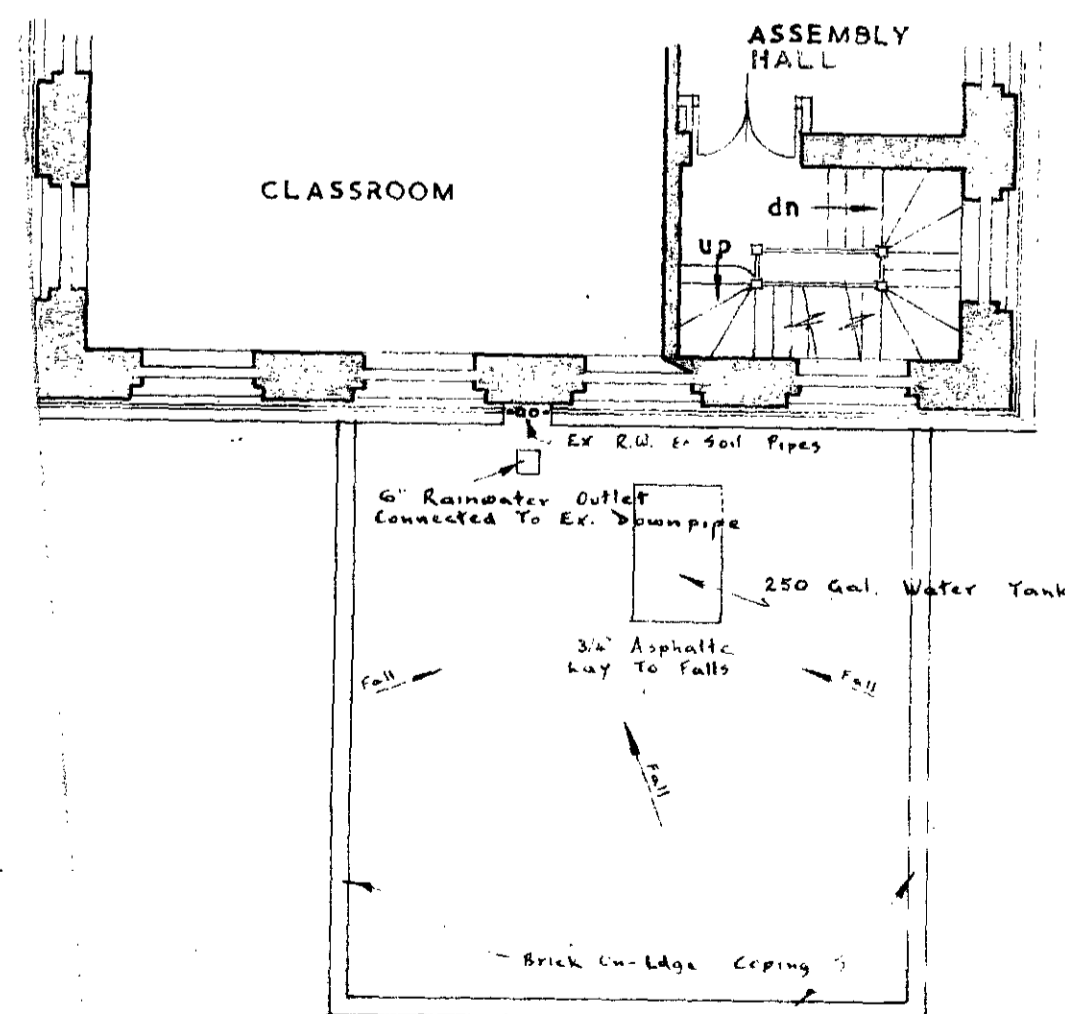
BARTRAMS R.C.
CONVENT SCHOOL
HAVERSTOCK HILL
LONDON N.W. 3.

Drg No : - BC/HH/66/2/A
Scale : - 1/8" to 1'-0"
Date : - April 1966

ROBERT SHARP & SON
CHARTERED ARCHITECTS
No. 81 CHESTER SQ.
LONDON S.W. 1.
SLOane 2168



GROUND FLOOR PLAN



RO PLAN