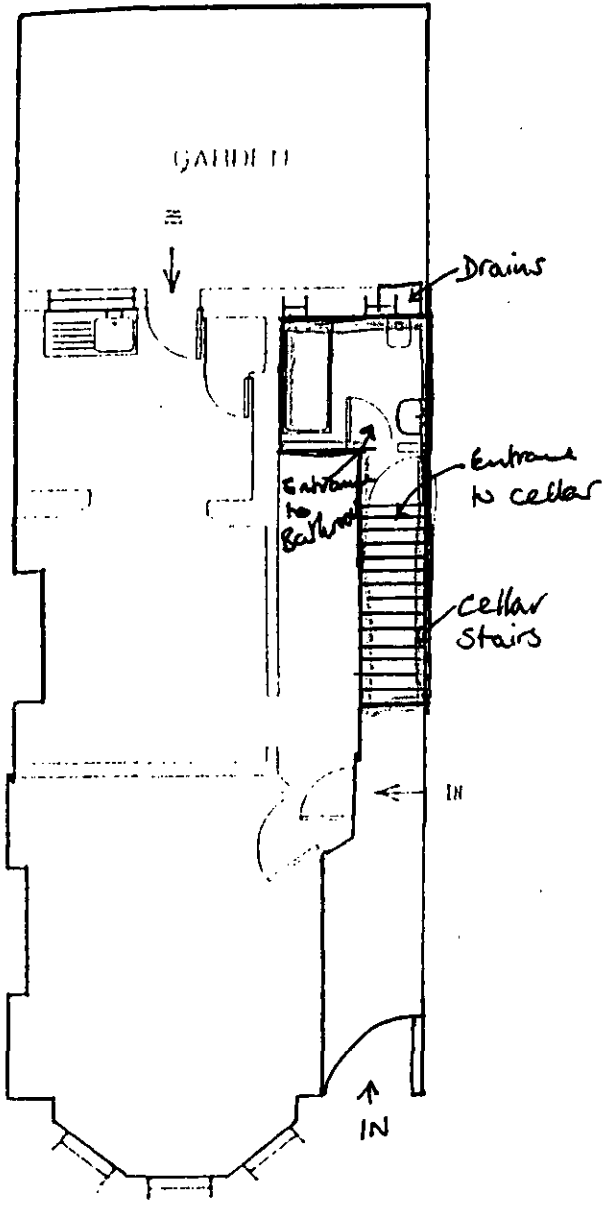
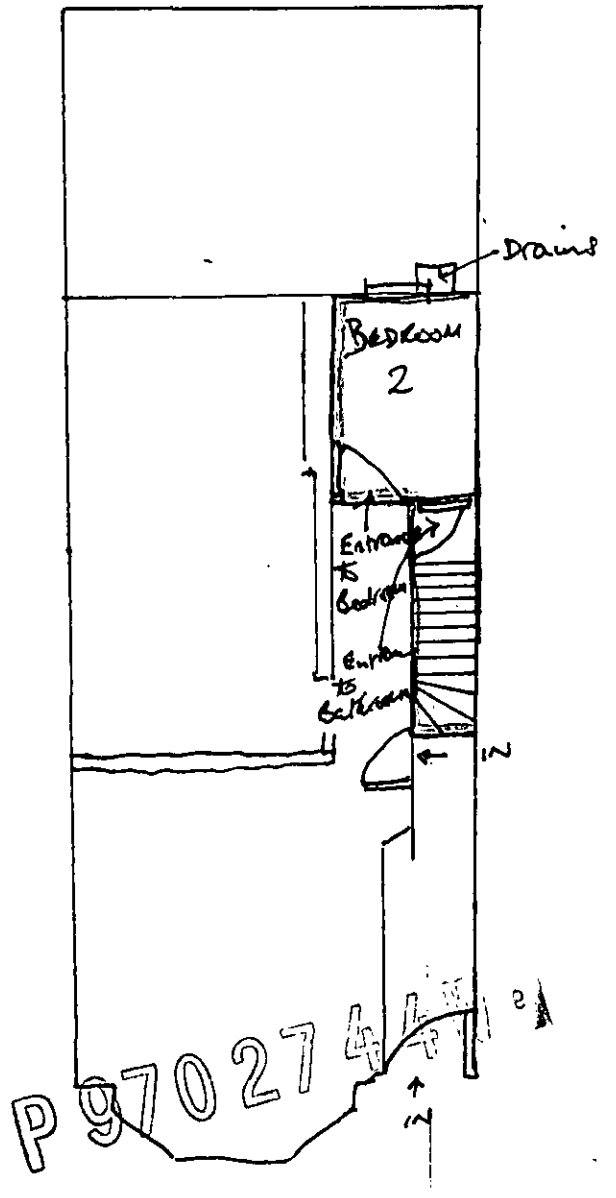


GROUND FLOOR
PLANS FOR ALTERATION
CHANGES OUTLINED IN RED



GROUND FLOOR
AFTER WORK COMPLETED



- c) Partition between original hallway + original bathroom was removed.
- b) Stairs were moved forward to accommodate landing at top of stairs, entered from the side of the original staircase.

- c) Partition created where original entrance to basement had been
- d) Entrance to Bedroom 2 created by taking 1m ground space for original hallway.

LONDON BOROUGH OF CAMDEN
 TOWN AND COUNTRY PLANNING ACT 1990
 30 OCT 1997
 PLANS APPROVED
 ON BEHALF OF THE COUNCIL