

EXISTING

GROUND FLOOR PLAN

FIRST FLOOR PLAN

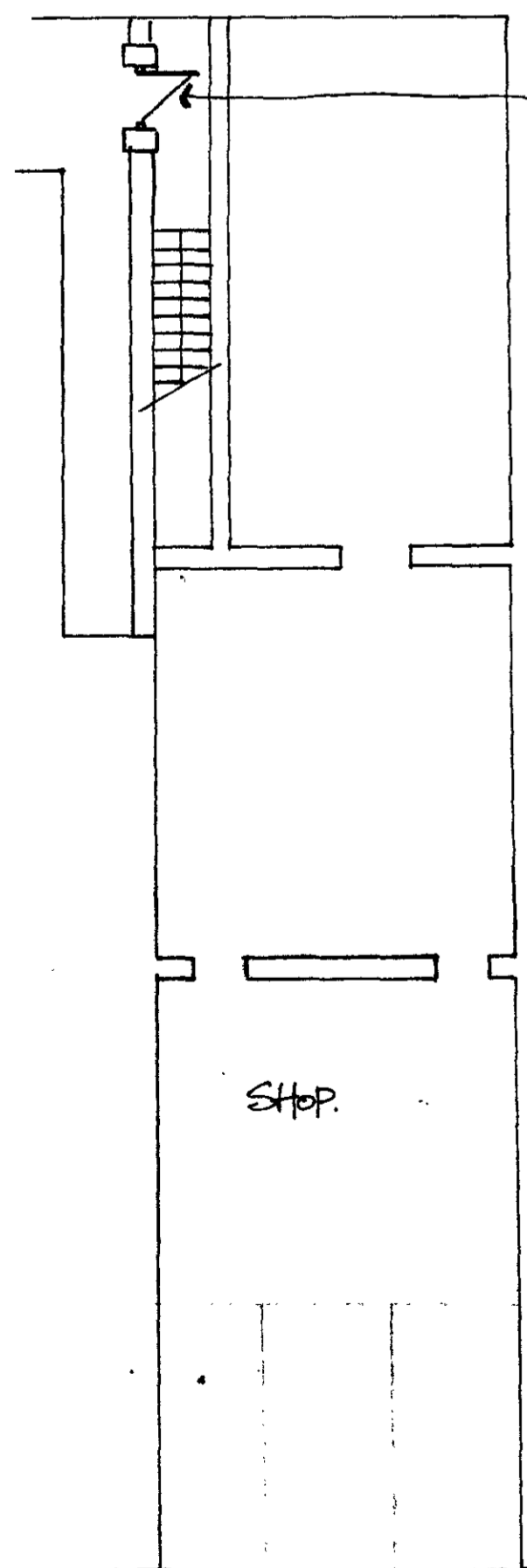
SECOND FLOOR PLAN

THIRD FLOOR PLAN

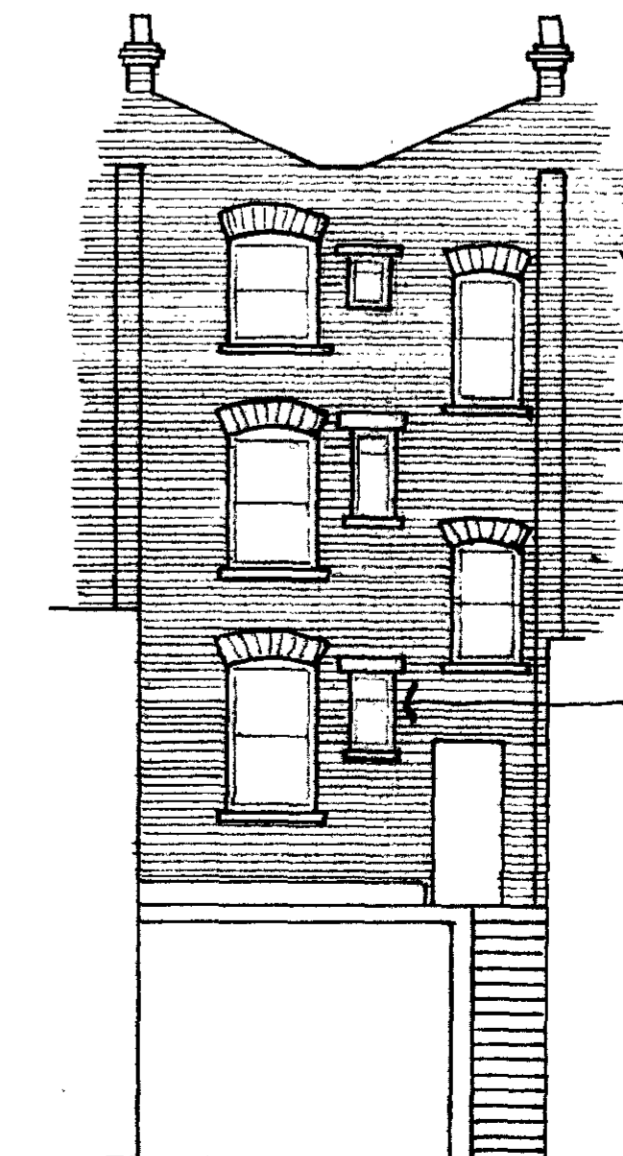
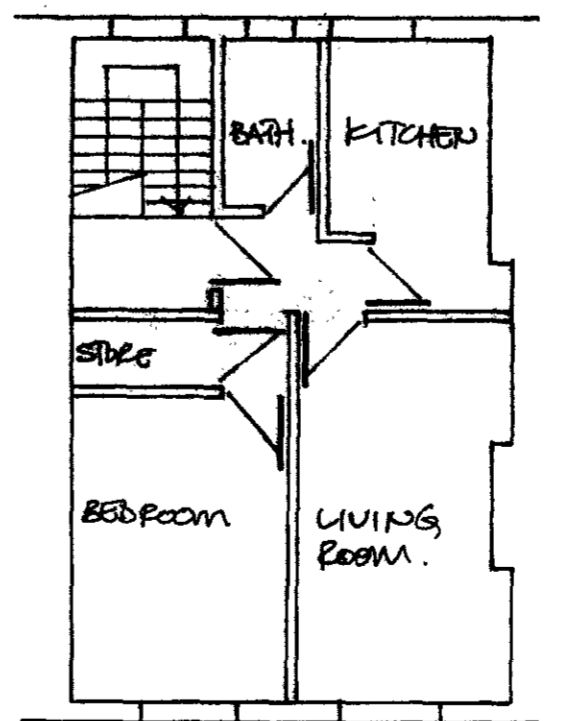
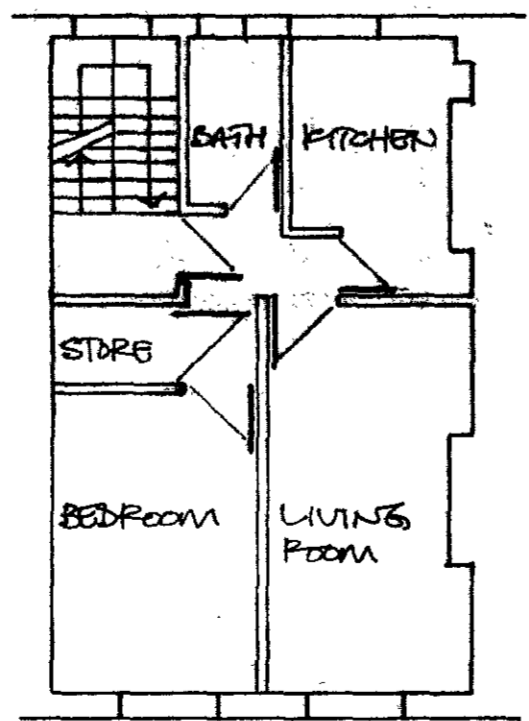
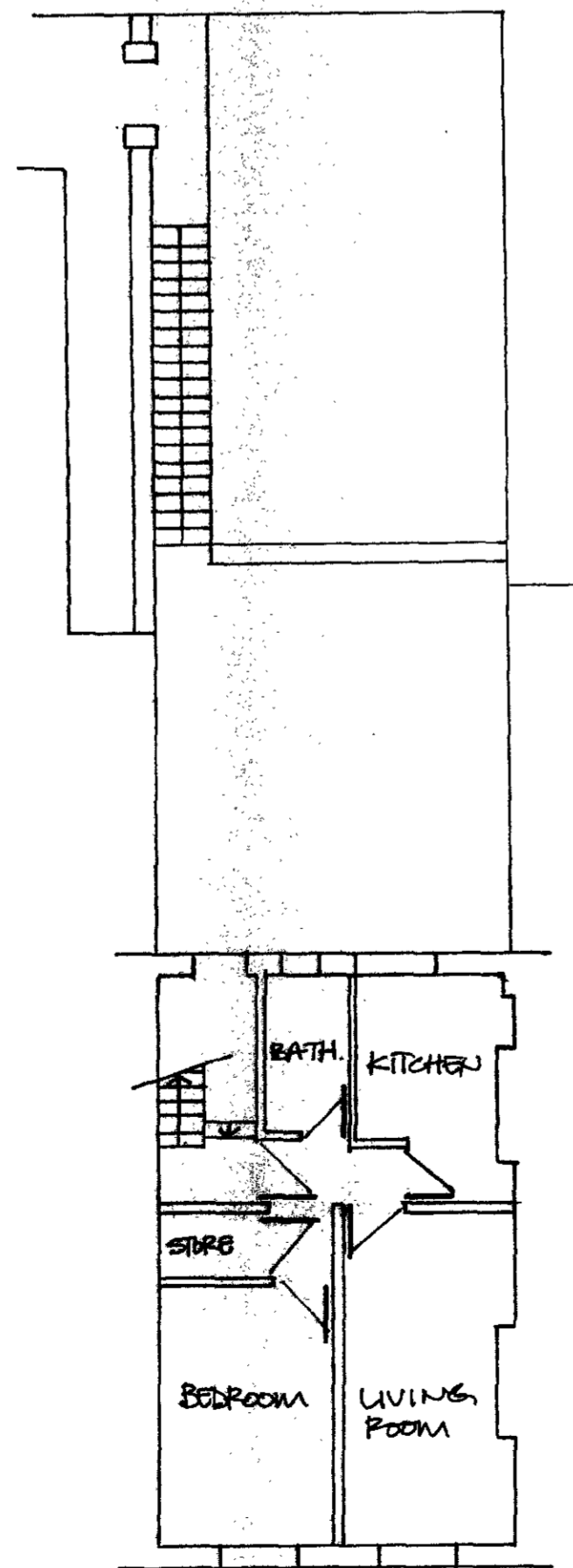
FRONT ELEVATION

(Remains un-altered)

REAR ELEVATION



NEW TIMBER
CLOSE BOARDING
PAINTED SOFTWOOD
SAFE



NEW WINDOW TO
FIRST FLOOR
BATHROOM WITH
PAINTED SOFTWOOD
FRAME

PROPOSED

GROUND FLOOR PLAN

FIRST FLOOR PLAN

SECOND FLOOR PLAN

THIRD FLOOR PLAN

REAR ELEVATION

P 9/02942W

LONDON BOROUGH OF CAMDEN
TOWN AND COUNCIL PLANNING ACTS
- 3 DEC 1997
PLANS APPROVED
ON BEHALF OF THE COUNCIL

Rev:	Date:	Amendment:
	22/10/97	ISSUED WITH PLANNING SUBMISSION
<p>LEAPER & CO Consulting Structural Engineers & Building Design Consultants 11 Cholmeley Park, London N6 8ET Tel: 0181 348 0035 Fax: 0181 348 4088</p>		
<p>Job: 218A KILBURN HIGH ROAD LONDON</p>		
<p>Dwg. Title: EXISTING & PROPOSED PLANS & ELEVATIONS</p>		
Scale:	Date:	Drawn: SP
1:100	OCT 197	Checked:
Dwg. No.:	Rev.:	
548/76/01.		