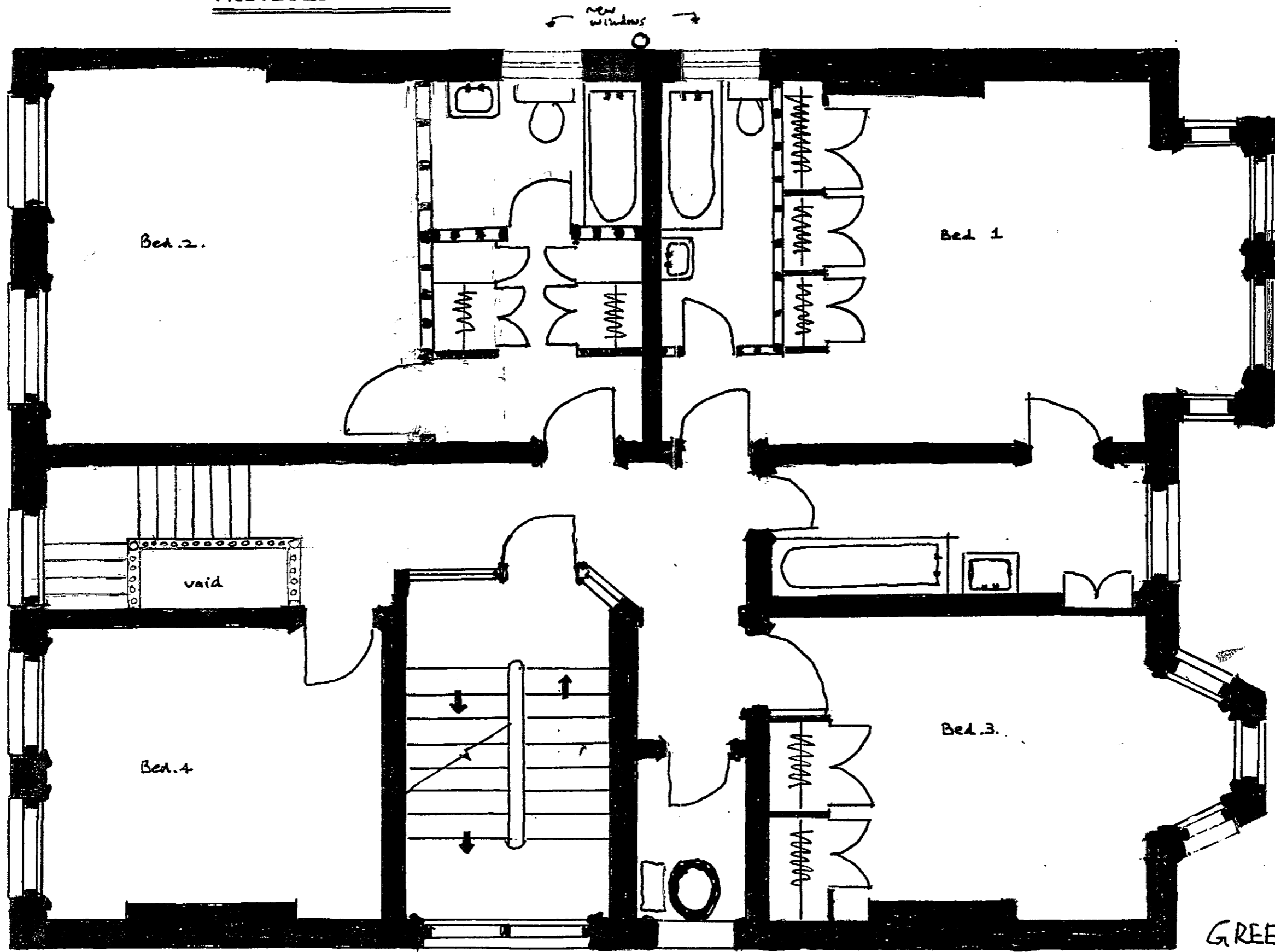


copy of plan  
01728 636276

PROPOSED PLAN



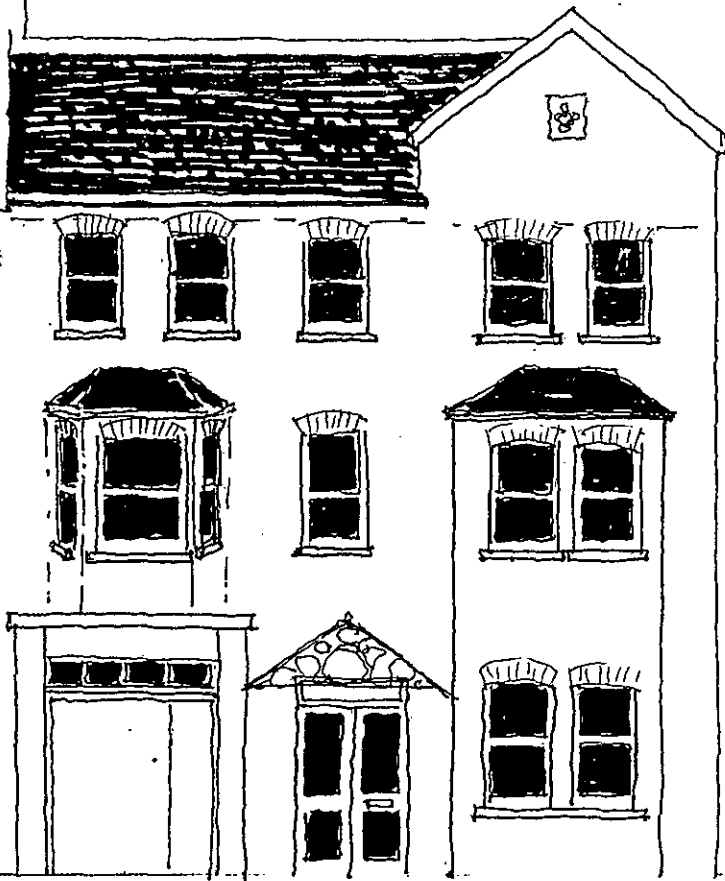
CAVE COPY

LONDON BOROUGH OF CAMDEN  
 TOWN AND COUNTRY PLANNING ACTS  
 13 OCT 1995  
 PLANS APPROVED  
 ON BEHALF OF THE COUNCIL

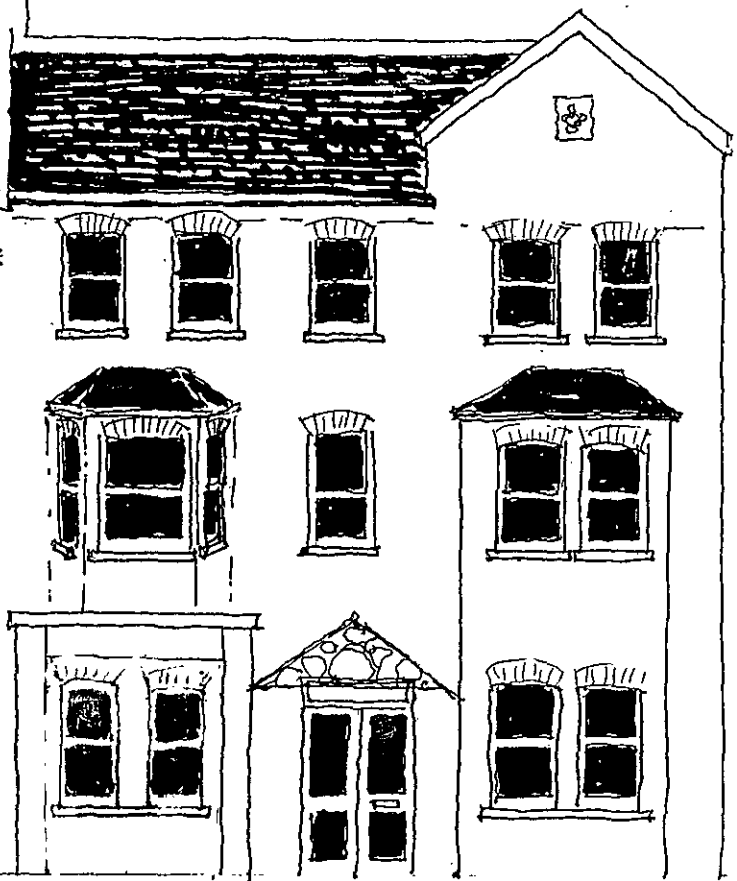
01728 636276

GREENCROFT Gdns.  
FIRST FLOOR.

13 OCT 1995



82, GREENCROFT GARDENS, N.W.6



82, GREENCROFT GARDENS, N.W.6

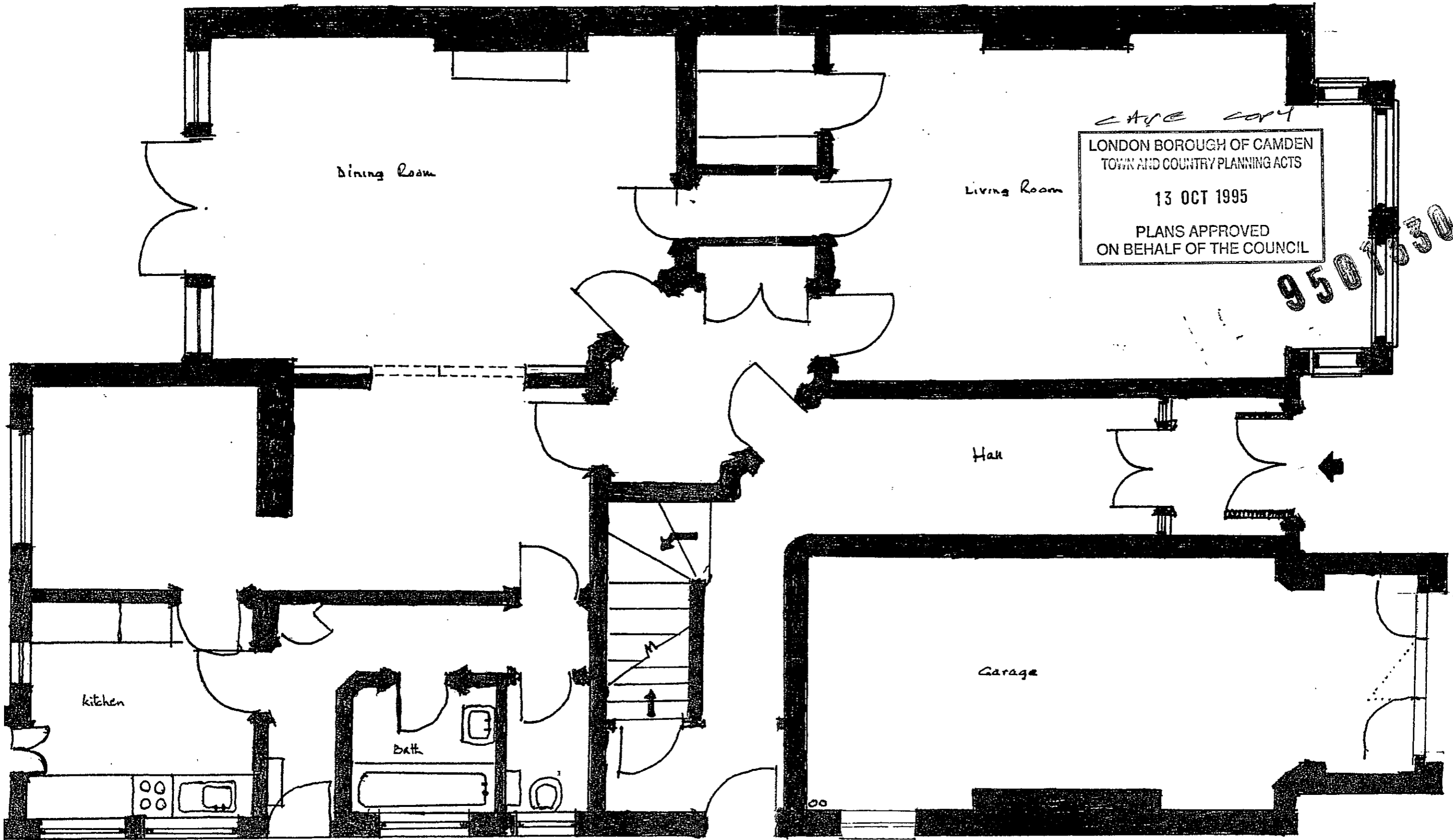
CASE COPY

EXISTING ELEVATION

LONDON BOROUGH OF CAMDEN  
TOWN AND COUNTRY PLANNING ACTS  
13 OCT 1995  
PLANS APPROVED  
ON BEHALF OF THE COUNCIL

PROPOSED ELEVATION

EXISTING PLAN



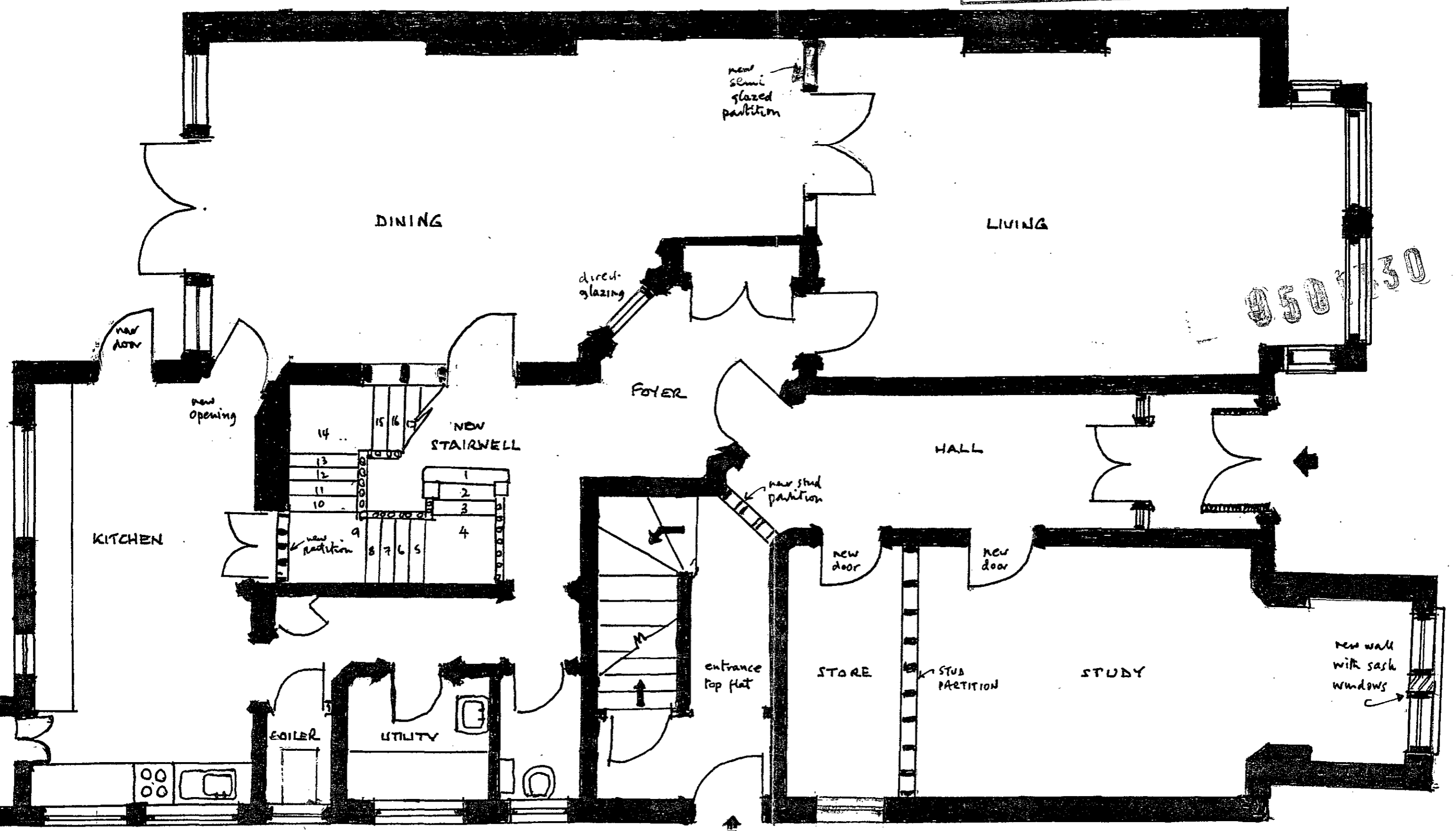
GREENCROFT GDNS NW6  
GROUND FLOOR.

1:50

CASE COPY  
 LONDON BOROUGH OF CAMDEN  
 TOWN AND COUNTRY PLANNING ACTS  
 13 OCT 1995  
 PLANS APPROVED  
 ON BEHALF OF THE COUNCIL

1001 1.000  
 01728 63876

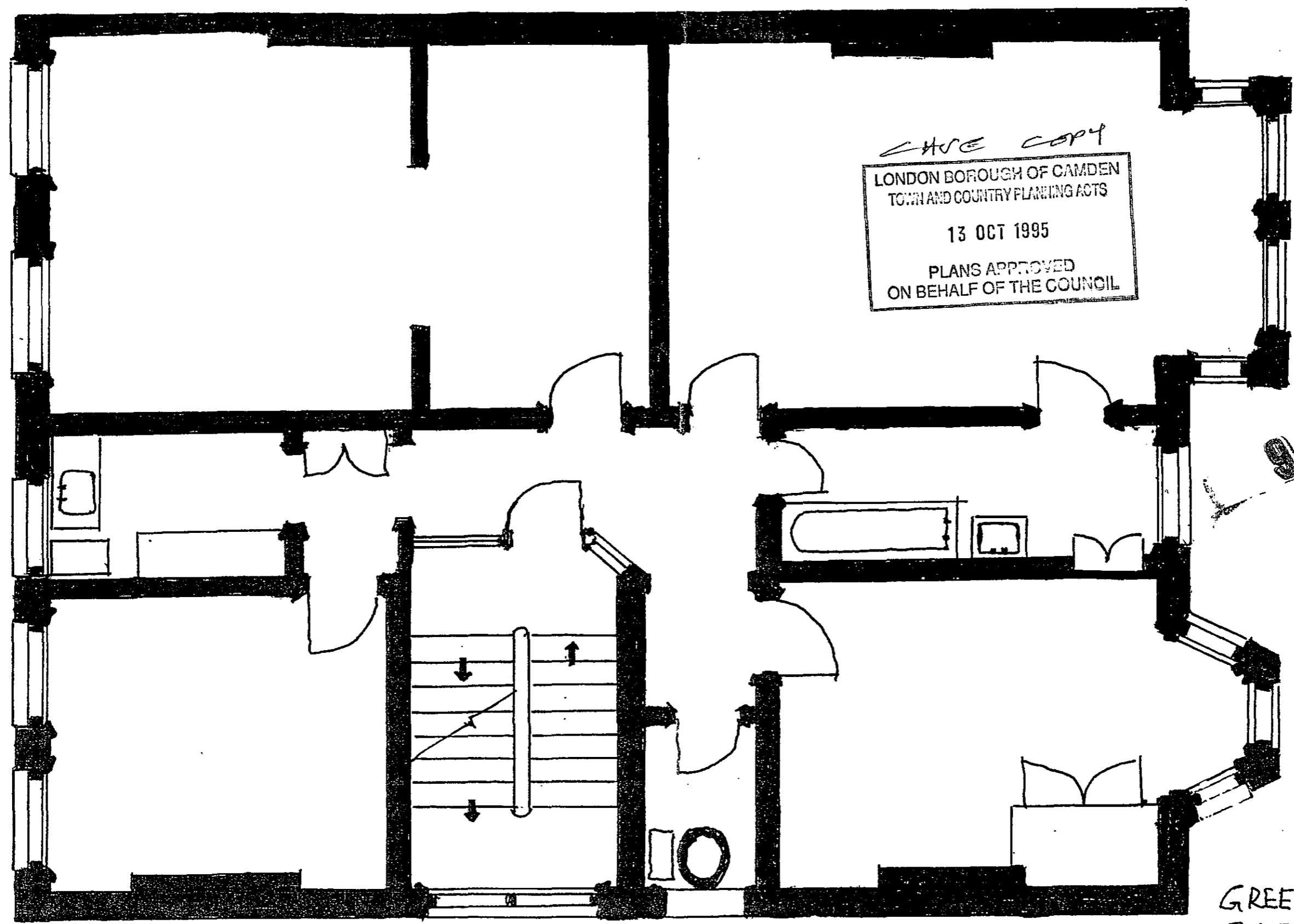
PROPOSED PLAN



GREENCROFT GDNS NW6  
 GROUND FLOOR.

1:50

EXISTING PLAN



*CASE COPY*

LONDON BOROUGH OF CAMDEN  
 TOWN AND COUNTRY PLANNING ACTS

13 OCT 1995

PLANS APPROVED  
 ON BEHALF OF THE COUNCIL

9501330

GREENCROFT Gdns.  
 FIRST FLOOR. NW6