

LONDON BOROUGH OF CAMDEN
 TOWN AND COUNTRY PLANNING ACT
 06 JAN 1994
 PLANS APPROVED
 ON BEHALF OF THE COUNCIL

PLANTING STRIP AT BASE OF RETAINING WALL FOR CREEPERS etc.

LONDON BOROUGH OF CAMDEN
 ENVIRONMENT DEPT.
 PLANNING, TRANSPORT & EMPLOYMENT
 13 DEC 1993
 RECEIVED

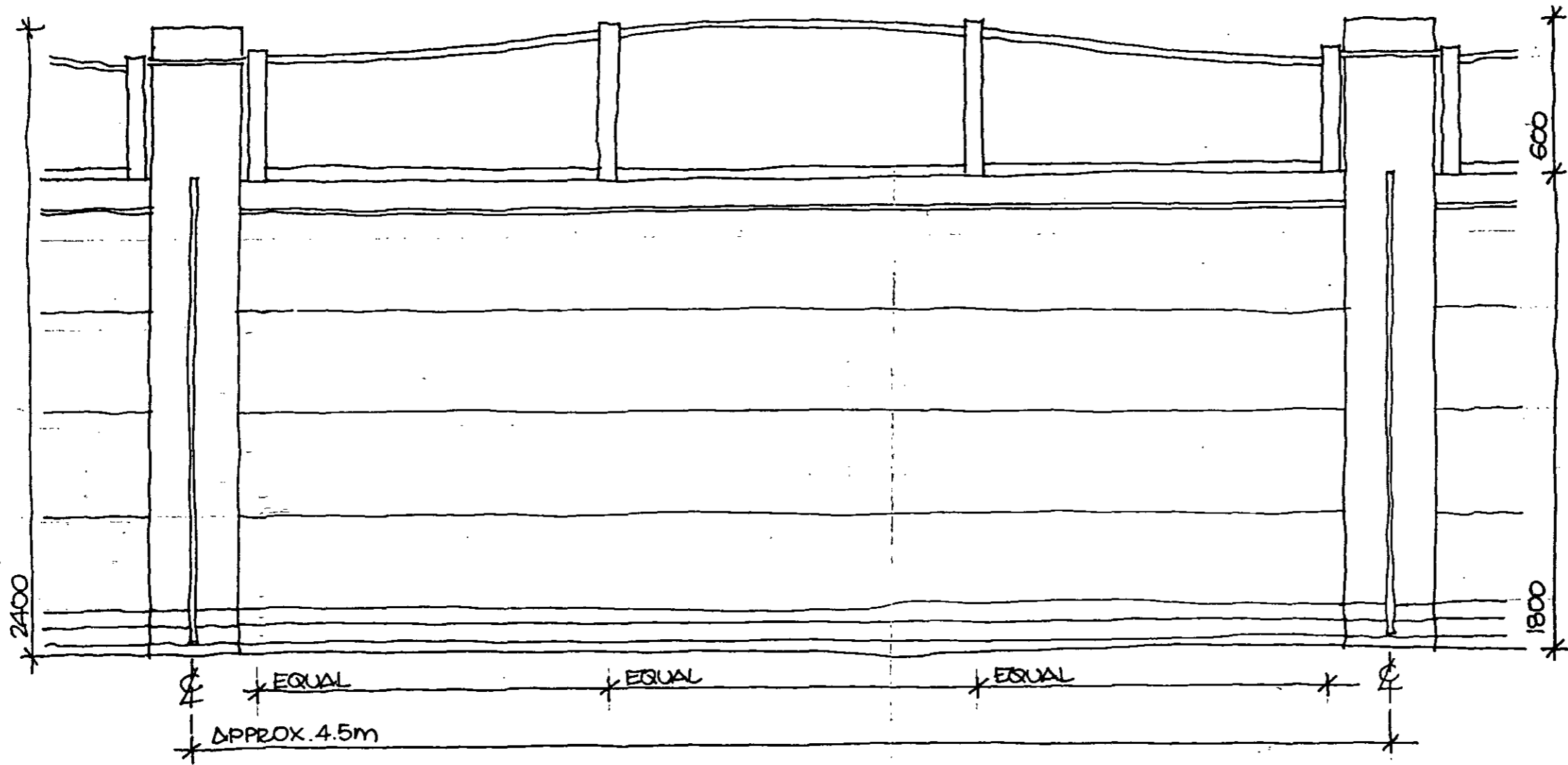
9301122R1

Rev. A: EXTENT OF ADOPTABLE ROAD REDUCED (12.93)

POLLARD THOMAS & EDWARDS ARCHITECTS

18 ESSEX ROAD, LONDON N1 8LN FAX: 071-354 0884 TELEPHONE: 071-359 7121

JOB TITLE CAMDEN GOODS YARD: NORTHERN SITE	DRAWN BY	SCALE 1:500	DATE 11.93
DRAWING TITLE SKETCH PROPOSAL FOR SURFACE TREATMENTS	JOB No. 92/442	DWG No. SK 206	REV. No. A



TREATED S/W TRELLIS
OR FENCING PANELS
BETWEEN PIERS

BRICK ON EDGE COPING
ON CREAMING TILE

BRICKWORK TO
MATCH FACING BRICKWORK
TO HOUSES

215 mm BRICK WALLS
1800mm HIGH
AND 340 x 340mm
BRICK PIERS AT
1/2 PARTY WALLS
OF HOUSES, OR AT
APPROX 4.5m
CENTRES TO FLATS

INTERMEDIATE GARDEN
FENCES CENTRED ON
BRICK PIERS

MIN 2 COURSES BLUE
ENGLAND BRICKS
ABOVE S.L.

06 JAN 1994

PLANS APPROVED
ON BEHALF OF THE COUNCIL

BUCKET HANDLE NATURAL MORTAR
FLEMISH GARDEN WALL BOND
RECESSED POINTING APPROX. EVERY 5 COURSES AS SHOWN

9301122RT

POLLARD THOMAS & EDWARDS ARCHITECTS
18 ESSEX ROAD, LONDON N1 8LN FAX: 071-354 0884 TELEPHONE: 071-359 7121

JOB TITLE CAMDEN GOODS YARD: SOUTHERN SITE	DRAWN BY	SCALE 1:20	DATE
DRAWING TITLE PROPOSED BOUNDARY WALLS BETWEEN PRIVATE GARDENS + SAFEWAY SITE	JOB No. 92/442	DWG No. SK 306	REV. No.

RAILWAY SIDE ↗

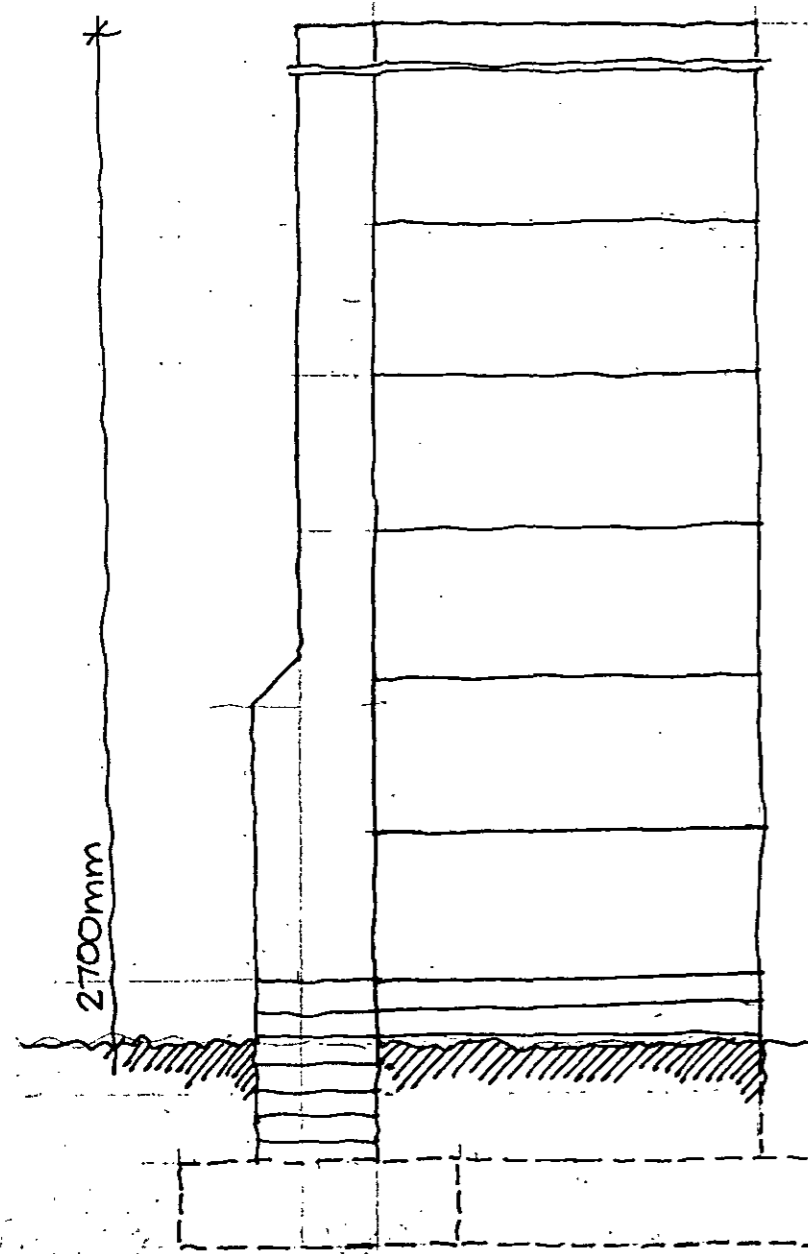
PLAN OF WALL

PLANTING ↘

10m

10m

25m RADIUS



2700mm

KERB ROADWAY

- TILE CREASING AND BRICK ON EDGE COPINGS
- 215/330mm BRICK WALL
- IN BRICK TO MATCH FACING BRICKWORK TO HOUSES
- FLEMISH GARDEN WALL BOND
- BUCKET HANDLE NATURAL POINTING
- WITH RECESSED POINTING APPROX. EVERY 5 COURSES
- MIN. 2 COURSES BLUE ENGINEERING BRICKS ABOVE G.L.
- S/S WIRES ARRANGED ACROSS BRICKWORK FOR WALL TOPS EY, etc.

SECTION THRO' WALL

CMA Copy
 LONDON BOROUGH OF CAMDEN
 TOWN AND COUNTRY PLANNING ACTS
 06 JAN 1994
 PLANS APPROVED
 ON BEHALF OF THE COUNCIL

19301122R1

POLLARD THOMAS & EDWARDS ARCHITECTS
 18 ESSEX ROAD, LONDON N1 8LN FAX: 071-354 0884 TELEPHONE: 071-359 7121

JOB TITLE CAMDEN GOODS YARD	DRAWN BY	SCALE 1:200/1:20	DATE 11.93
DRAWING TITLE PROPOSAL FOR SERPENTINE BOUNDARY WALLS	JOB No. 92/442	DWG No. SK 307	REV. No.

Clear Copy

LONDON BOROUGH OF CAMDEN
TOWN AND COUNTRY PLANNING ACTS
06 JAN 1994
PLANS APPROVED
ON BEHALF OF THE COUNCIL



9301122 R1

9301122 R1

POLLARD THOMAS & EDWARDS ARCHITECTS
8 ESSEX ROAD, LONDON N1 8LN FAX: 071-354 0884 TELEPHONE: 071-359 121

LONDON BOROUGH OF CAMDEN
ENVIRONMENT DEPT.
PLANNING, TRANSPORT & EMPLOYMENT
13 DEC 1993
RECEIVED

JOB TITLE	DRAWN BY	SCALE	DATE
CAMDEN GOODS YARD: SOUTHERN SITE			
DRAWING TITLE	JOB No.	DWG No.	REV. No.
VIEW FROM OVAL ROAD TOWARDS PEDESTRIAN/CYCLE ROUTE TO SAFEWAYS	92/442	SK 208	



Case Copy

LONDON BOROUGH OF CAMDEN
TOWN AND COUNTRY PLANNING ACTS

06 JAN 1994

PLANS APPROVED
ON BEHALF OF THE COUNCIL

LONDON BOROUGH OF CAMDEN
ENVIRONMENT & EMPLOYMENT
PLANNING, TRANSPORT & EMPLOYMENT
13 DEC 1993
RECEIVED

9301122 R1

POLLARD THOMAS & EDWARDS ARCHITECTS

18 ESSEX ROAD, LONDON N1 8LN FAX: 071-354 0884 TELEPHONE: 071-359 7121

JOB TITLE CAMDEN GOODS YARD: SOUTHERN SITE	DRAWN BY	SCALE	DATE
DRAWING TITLE VIEW OF MEWS HOUSING	JOB No. 92/442	DWG No. SK 309	REV. No.



Case Copy

TOWN...

06 JAN 1994

PLANS APPROVED
ON BEHALF OF THE COUNCIL

LONDON BOROUGH OF CAMDEN
ENVIRONMENT DEPT.
PLANNING, TRANSPORT & EMPLOYMENT
13 DEC 1993
RECEIVED

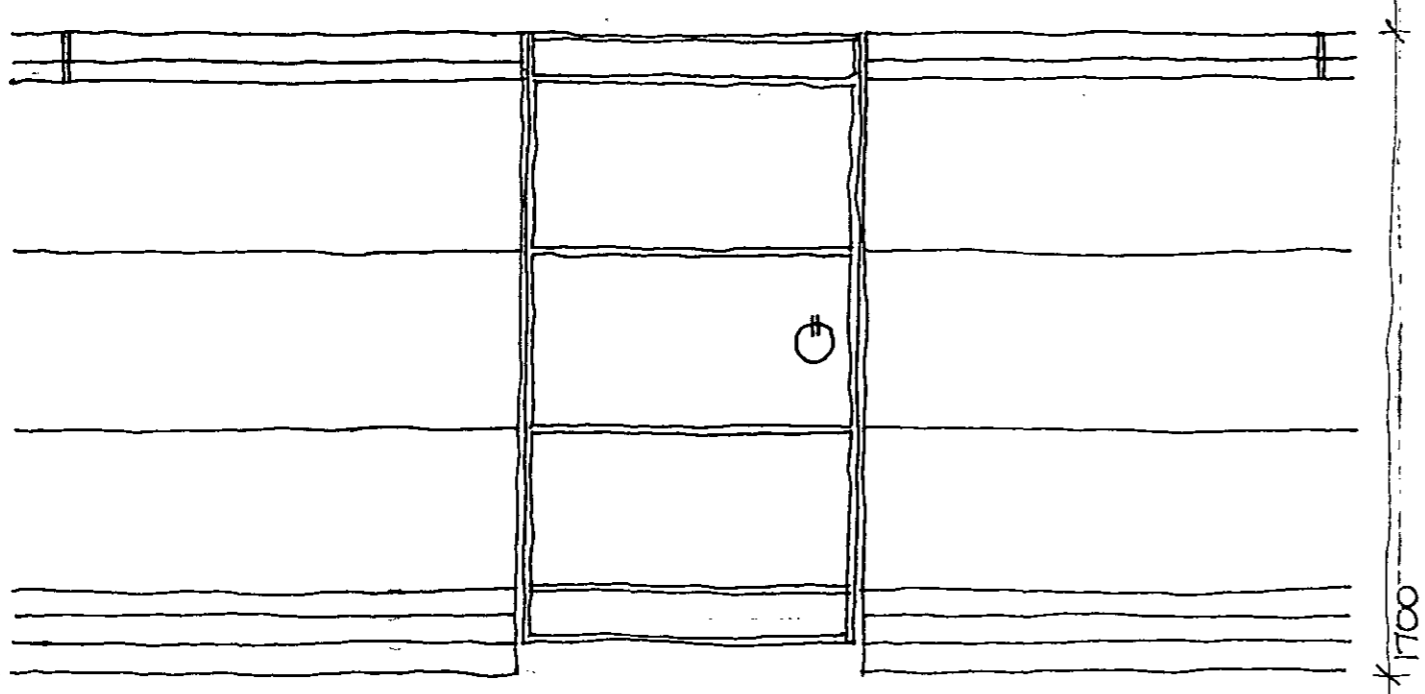
9301122 R1

POLLARD THOMAS & EDWARDS ARCHITECTS

18 ESSEX ROAD, LONDON N1 8LN FAX: 071-354 0884 TELEPHONE: 071-359 7121

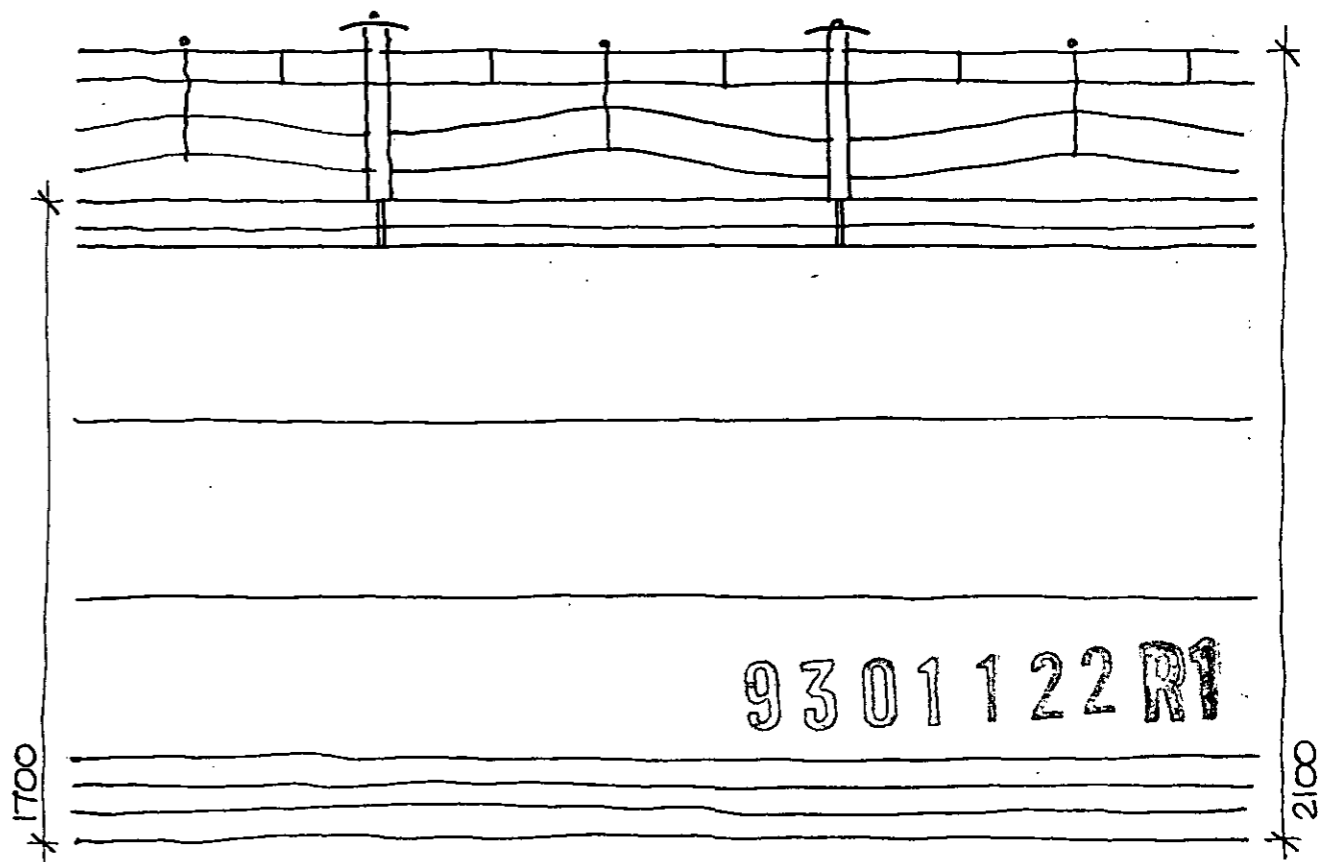
JOB TITLE CAMDEN GOODS YARD: SOUTHERN SITE	DRAWN BY	SCALE	DATE
DRAWING TITLE VIEW FROM MENS HOUSING TOWARDS INTERCHANGE WAREHOUSE	JOB No. 32/442	DWG No. SK 310	REV. No.

Copy Copy
 LONDON BOROUGH OF CAMDEN
 TOWN AND COUNTRY PLANNING ACTS
 06 JAN 1994
 PLANS APPROVED
 ON BEHALF OF THE COUNCIL



WALLS TO GARDENS
FACING MEWS
 1700mm HIGH BRICK WALL WITH RECONSTITUTED
 STONE COPINGS AND 900mm WIDE GATE MADE OF
 STEEL PANELS WITH MARINE PLY INSERTS

BRICKWORK TO MATCH FACING BRICKWORK TO HOUSES + FLATS
 215mm WALLS FLEMISH GARDEN WALL BOND, BUCKET HANDLE POINTING
 WITH RECESSED POINTING EVERY 5th COURSE IN NATURAL MORTAR



WALLS AROUND BLOCK G
FACING PEDESTRIAN ROUTE
AND MEWS
 1700mm HIGH BRICK WALL WITH
 RECONSTITUTED STONE COPINGS
 AND RAILINGS ABOVE

LONDON BOROUGH OF CAMDEN
 ENVIRONMENT & EMPLOYMENT
 PLANNING, TRANSPORT & EMPLOYMENT
 17 DEC 1993

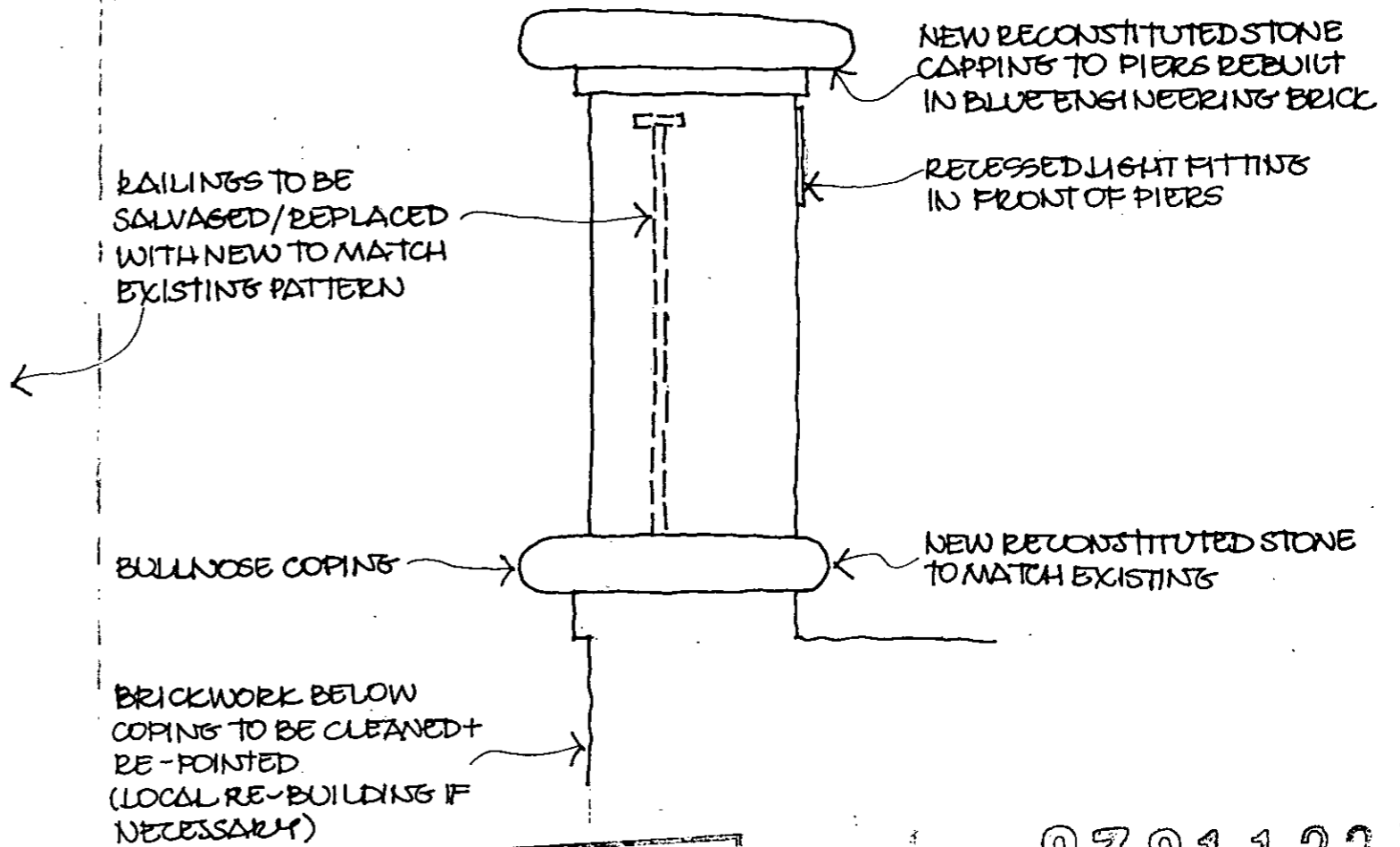
POLLARD THOMAS & EDWARDS ARCHITECTS
 18 ESSEX ROAD, LONDON N1 8LN FAX: 071-354 0884 TELEPHONE: 071-359 7121

JOB TITLE CAMDEN GOODS YARD: SOUTHERN SITE	DRAWN BY	SCALE 1:20	DATE 2.93
DRAWING TITLE GARDEN WALL DETAILS	JOB No. 92/442	DWG No. SK 311	REV. No.



Good Copy

LONDON BOROUGH OF CAMDEN
TOWN AND COUNTRY PLANNING ACTS
06 JAN 1994
PLANS APPROVED
ON BEHALF OF THE COUNCIL



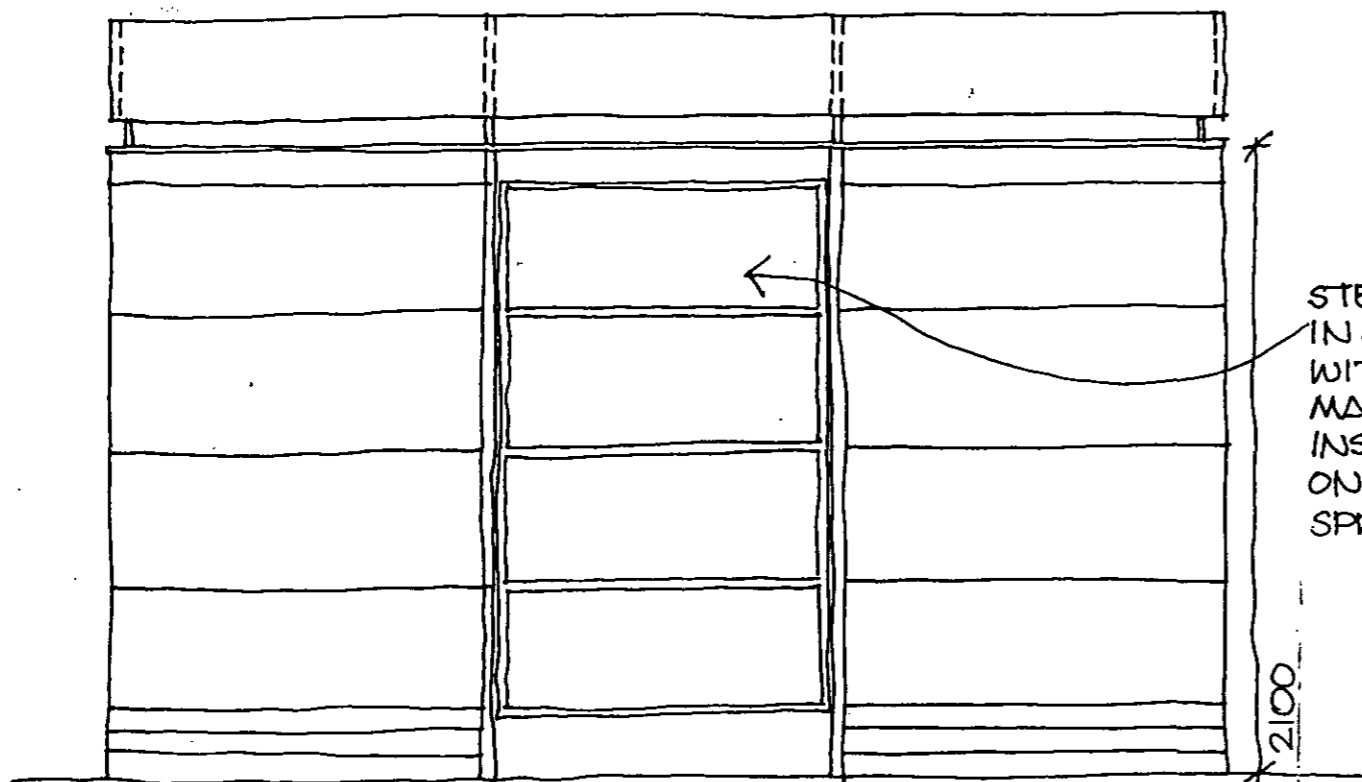
LONDON BOROUGH OF CAMDEN
ENVIRONMENT & LOCAL
PLANNING, TRANSPORT & EMPLOYMENT
13 DEC 1993
RECEIVED

9301122 P1

RE POILLARD THOMAS & EDWARDS ARCHITECTS

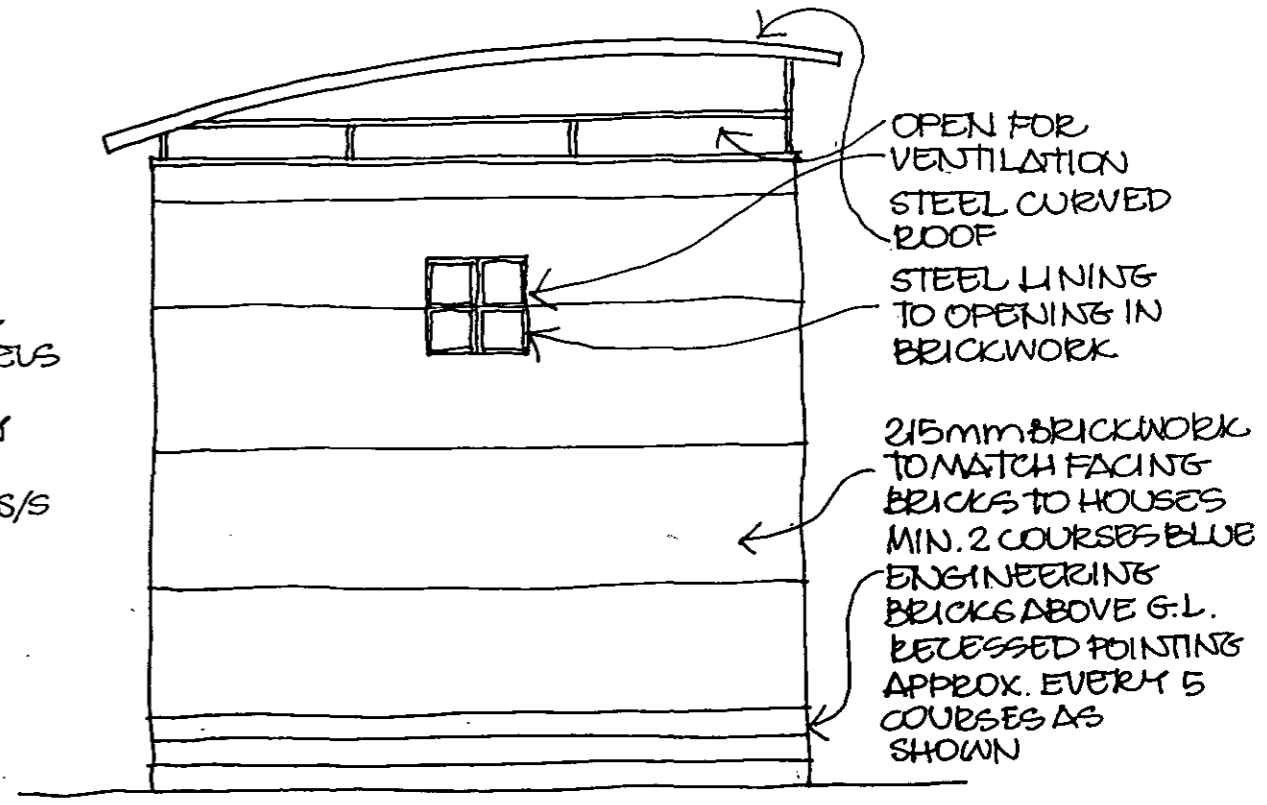
18 ESSEX ROAD, LONDON N1 8LN FAX: 071-354 0884 TELEPHONE: 071-359 7121

JOB TITLE	DRAWN BY	SCALE	DATE
CAMDEN GOODS YARD: SOUTHERN SITE		1:20	12.93
DRAWING TITLE	JOB No.	DWG No.	REV. No.
PROPOSED TREATMENT OF TOP OF CANAL RETAINING WALL	92/442	SK 312	



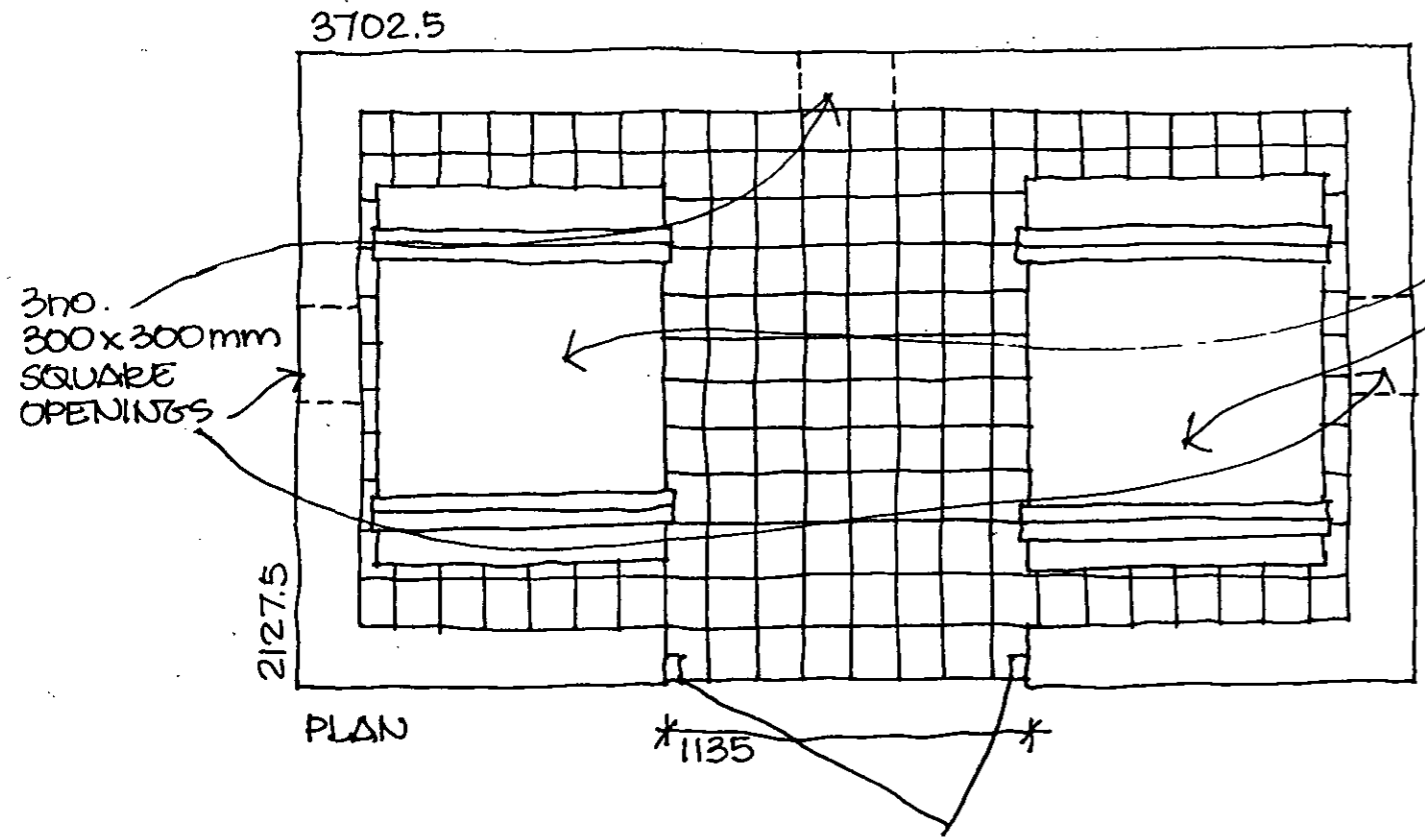
FRONT ELEVATION

STEEL DOOR
IN 4 NO. PANELS
WITH
MARINE PLY
INSERTS
ON STRONG S/S
SPRINGS



SIDE ELEVATION

OPEN FOR
VENTILATION
STEEL CURVED
ROOF
STEEL LINING
TO OPENING IN
BRICKWORK
215mm BRICKWORK
TO MATCH FACING
BRICKS TO HOUSES
MIN. 2 COURSES BLUE
ENGINEERING
BRICKS ABOVE G.L.
RECESSED POINTING
APPROX. EVERY 5
COURSES AS
SHOWN



PLAN

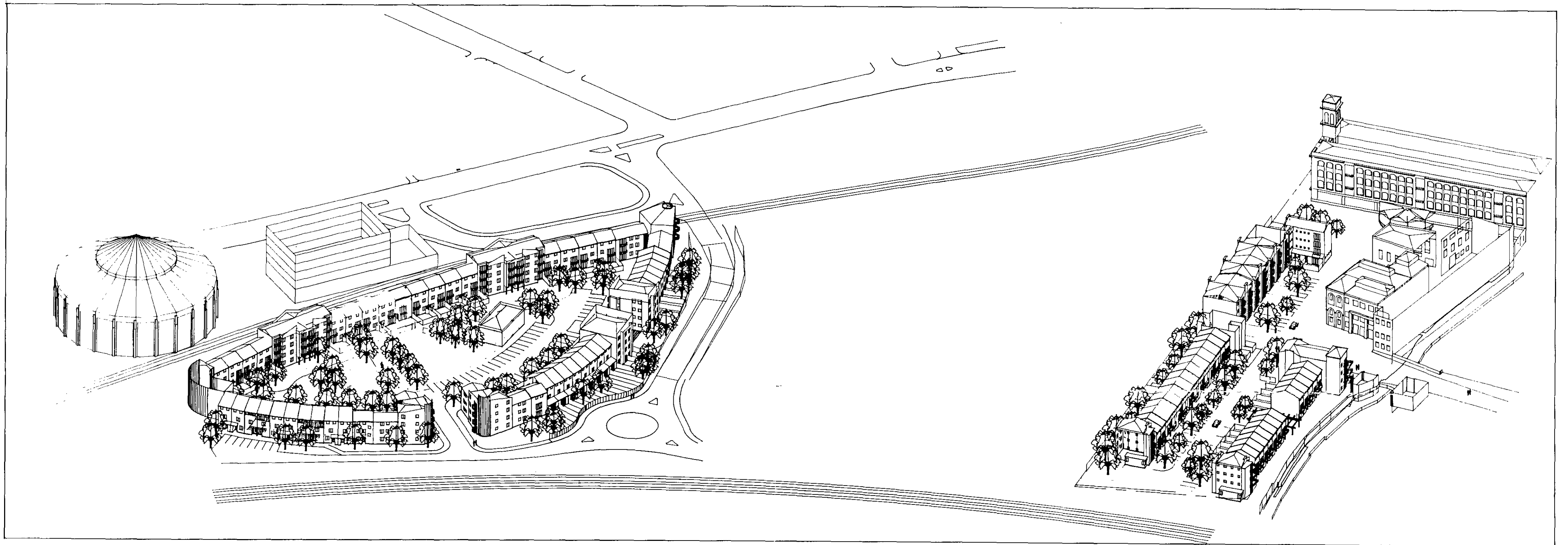
2 NO. EUROBINS (11 litre capacity)
AS ADVISED BY L. B. CAMDEN
WASTE MANAGEMENT
1370 H x 1275 W x 980 D mm.

3 no.
300 x 300 mm
SQUARE
OPENINGS

Copy
LONDON BOROUGH OF CAMDEN
TOWN AND COUNTRY PLANNING ACTS
06 JAN 1994
PLANS APPROVED
ON BEHALF OF THE COUNCIL

9301122R1

POLLARD THOMAS & EDWARDS ARCHITECTS			
18 ESSEX ROAD, LONDON N1 8LN		FAX: 071-354 0884	TELEPHONE: 071-359 7121
JOB TITLE CAMDEN GOODS YARD	DRAWN BY	SCALE 1:25	DATE 11.93
DRAWING TITLE FREESTANDING BIN STORES TO FLATS 92/442	JOB No. 92/442	DWG No. SK 305	REV. No.



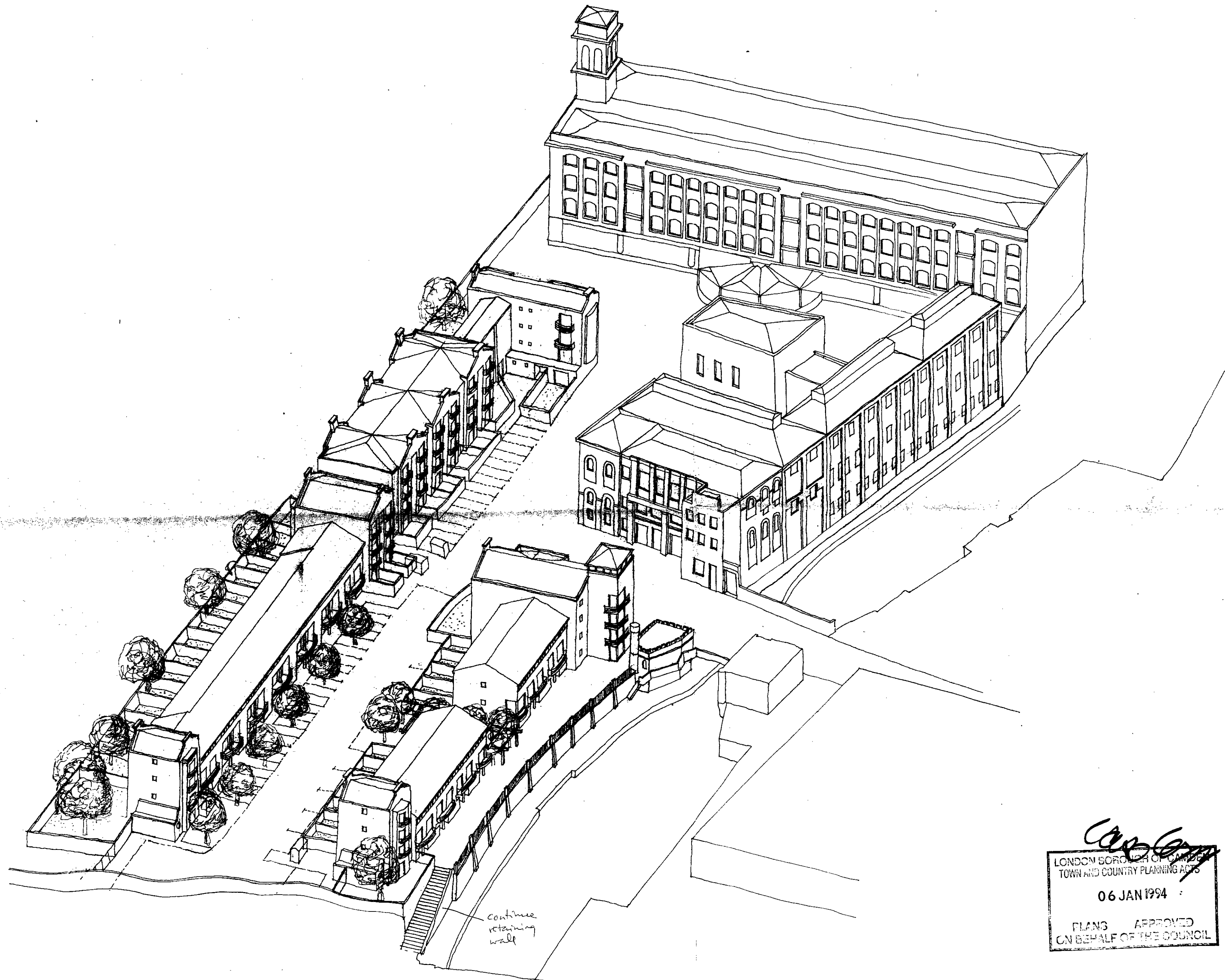
Lawson
 LONDON BOROUGH OF CAMDEN
 TOWN AND COUNTRY PLANNING ACTS
 06 JAN 1994
 PLANS APPROVED
 ON BEHALF OF THE COUNCIL

9301122 R₁

POLLARD THOMAS & EDWARDS ARCHITECTS

18 ESSEX ROAD, LONDON N1 8LN FAX: 071-354 0884 TELEPHONE: 071-359 7121

JOB TITLE CAMDEN GOODS YARD	DRAWN BY	SCALE NTS.	DATE 11. 93.
DRAWING TITLE SKETCH AXONOMETRIC OF NORTHERN AND SOUTHERN SITES	JOB No. 92 / 442	DWG No. 6K / 109	REV. No.



Continue retaining wall

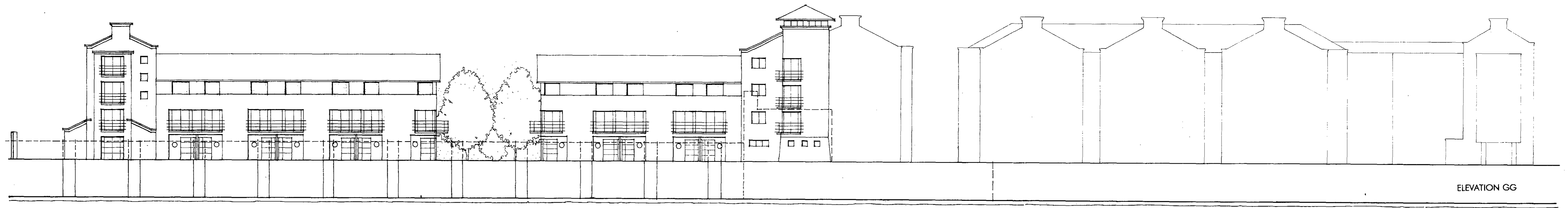
REVISIONS :
A. 17.11.93. Redrawn by hand on A2.

361 333 33
HENDER & HENDER
ARCHITECTS
18 ESSEX ROAD, LONDON N1 8LN

Carson
LONDON BOROUGH OF CAMDEN
TOWN AND COUNTRY PLANNING ACTS
06 JAN 1994
PLANS APPROVED
ON BEHALF OF THE COUNCIL

9301122R1

POLLARD THOMAS & EDWARDS ARCHITECTS			
18 ESSEX ROAD, LONDON N1 8LN		FAX: 071-354 0884	TELEPHONE: 071-359 7121
JOB TITLE CAMDEN GOODS YARD	DRAWN BY N.T.S.	SCALE N.T.S.	DATE 17.11.93
DRAWING TITLE SKETCH AXONOMETRIC SOUTHERN SITE	JOB No 92/442	DWG No 52/104	REV No A



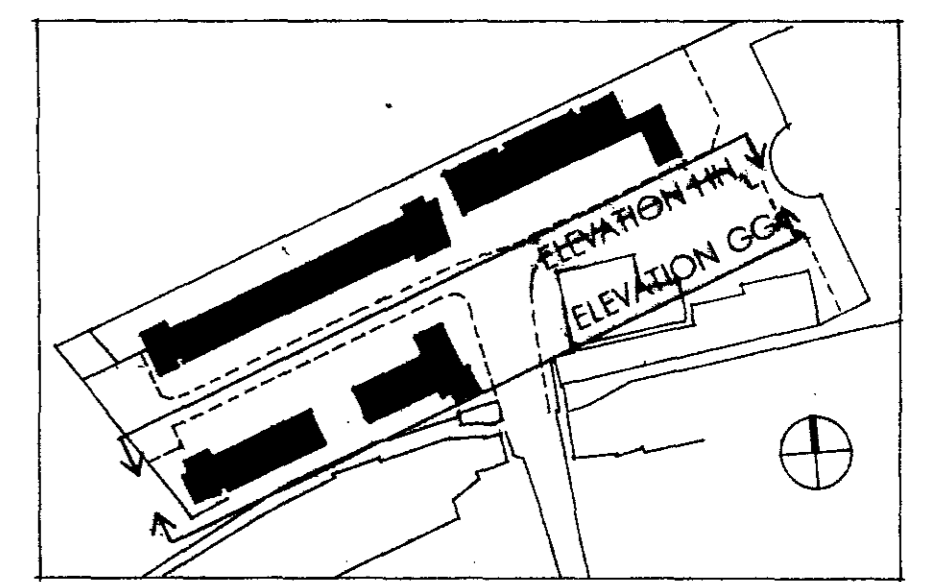
ELEVATION GG



ELEVATION HH

LONDON BOROUGH OF CAMDEN
TOWN AND COUNTRY PLANNING ACTS
06 JAN 1994
PLANS APPROVED
ON BEHALF OF THE COUNCIL

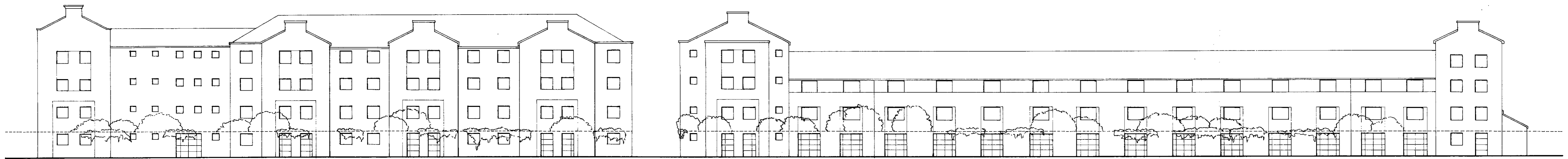
9301122 R1



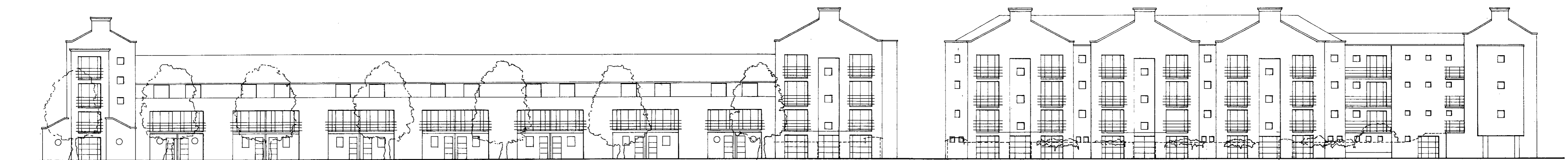
REVISION A: UPDATED (NOV. 93)

POLLARD THOMAS & EDWARDS ARCHITECTS
18 ESSEX ROAD, LONDON N1 8LN FAX: 071-354 0884 TELEPHONE: 071-359 7121

JOB TITLE	CAMDEN GOODS YARD SOUTHERN SITE	DRAWN BY	SCALE	DATE
DRAWING TITLE	PROPOSED ELEVATIONS GG, HH	JOB No.	PL108	REV. No.
		92/442		A



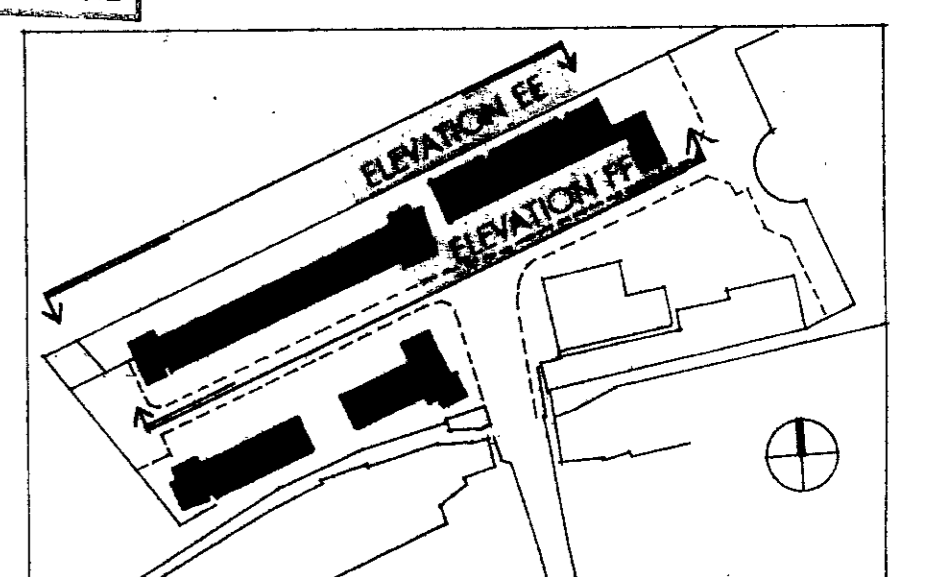
ELEVATION EE



ELEVATION FF

Handwritten: Copy
 LONDON BOROUGH OF CAMDEN
 TOWN AND COUNTRY PLANNING ACTS
 06 JAN 1994
 PLANS APPROVED
 ON BEHALF OF THE COUNCIL

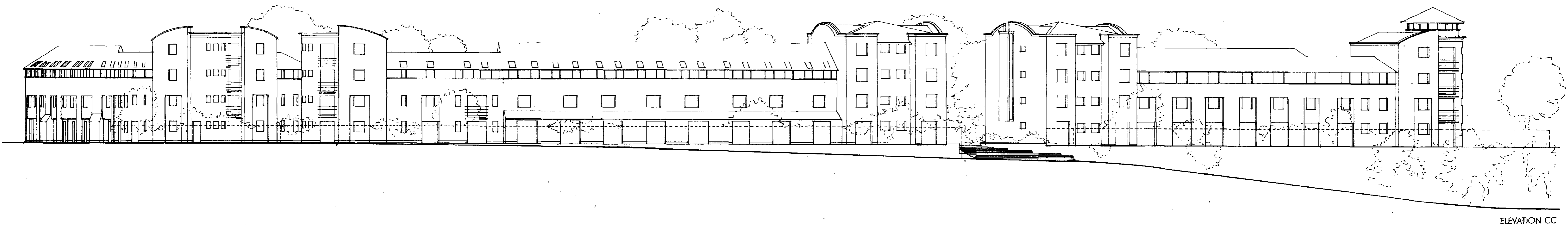
9301122R/



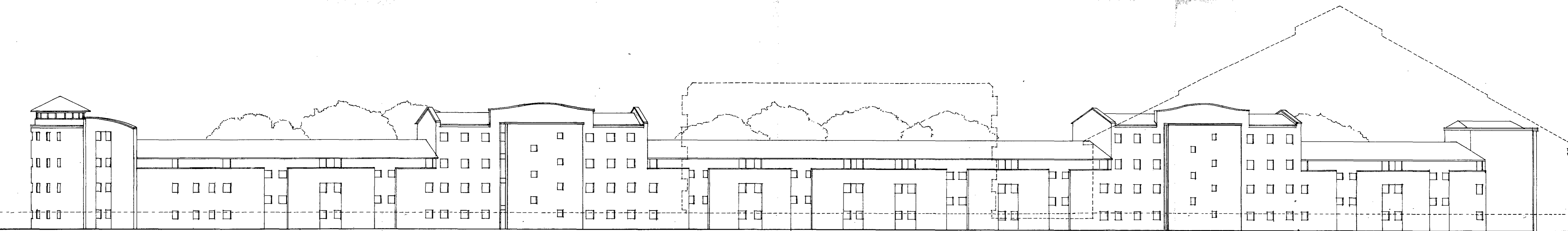
REVISION A : UPDATED (NOV. 93)

POLLARD THOMAS & EDWARDS ARCHITECTS
 18 ESSEX ROAD, LONDON N1 8LN FAX: 071-354 0884 TELEPHONE: 071-359 7121

JOB TITLE CAMDEN GOODS YARD	DRAWN BY	SCALE 1 : 200	DATE 8.93
DRAWING TITLE PROPOSED ELEVATION EE & FF	JOB No. 92/442	DWG No. PL107	REV. No. A



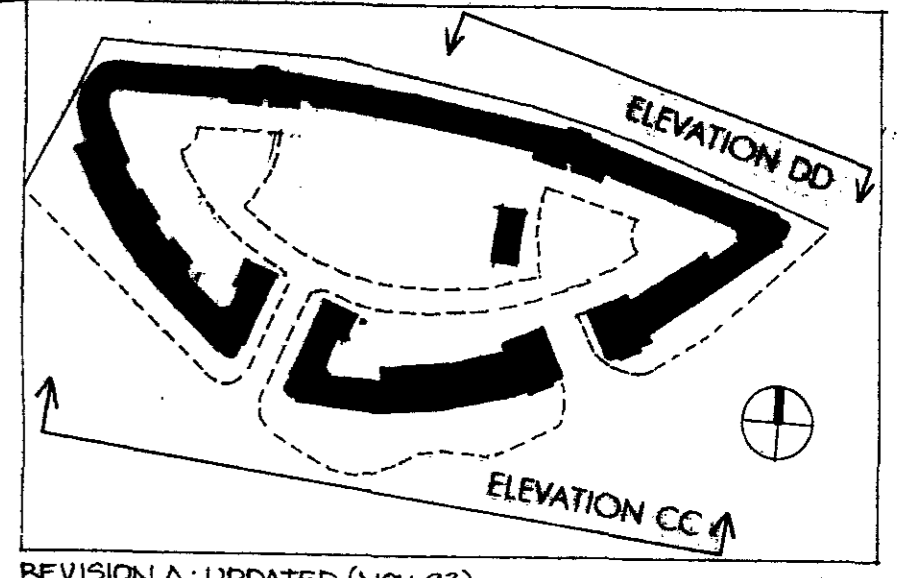
ELEVATION CC



ELEVATION DD

Camden
 LONDON BOROUGH OF CAMDEN
 TOWN AND COUNTRY PLANNING ACTS
 06 JAN 1994
 PLANS APPROVED
 ON BEHALF OF THE COUNCIL

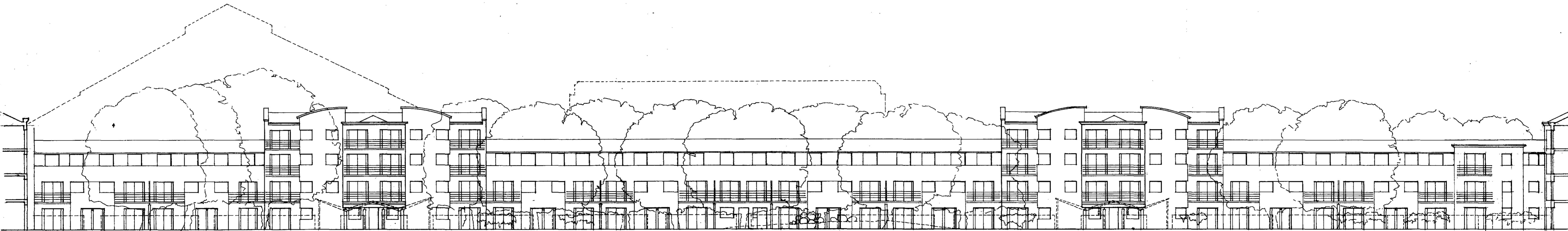
9301122R1



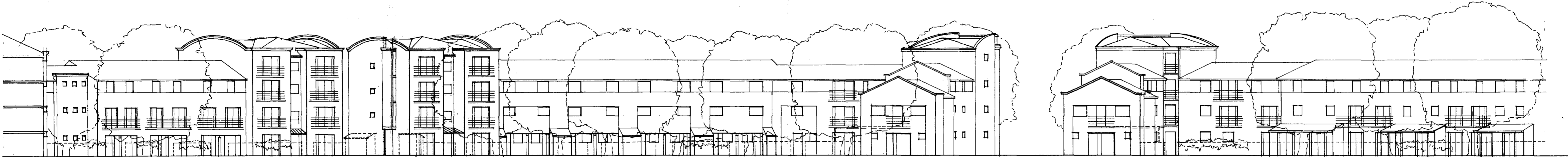
REVISION A: UPDATED (NOV. 93)

POLLARD THOMAS & EDWARDS ARCHITECTS
 18 ESSEX ROAD, LONDON N1 8LN FAX: 071-354 0884 TELEPHONE: 071-359 7121

JOB TITLE CAMDEN GOODS YARD	DRAWN BY	SCALE 1:200	DATE 8.93
DRAWING TITLE PROPOSED ELEVATIONS CC & DD	JOB No. 92/442	DWG No. PL105	REV. No. A



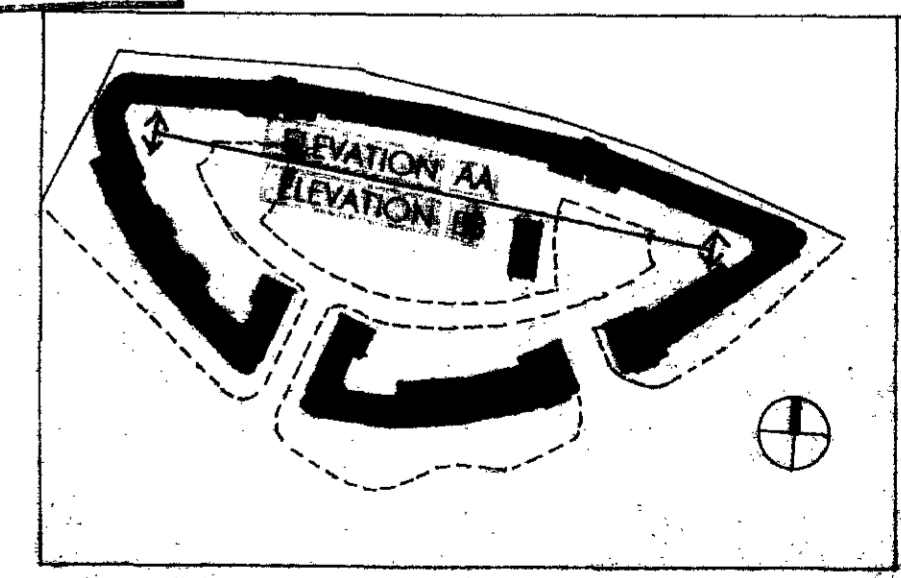
ELEVATION AA



ELEVATION BB

COPY COPY
 LONDON COUNTY COUNCIL
 TOWN AND COUNTRY PLANNING DEPT.
 06 JAN 1994
 PLANS APPROVED
 ON BEHALF OF THE COUNCIL

9301122R1



REVISION A - UPDATED (NOV. 93)

POLLARD THOMAS & EDWARDS ARCHITECTS
 18 ESSEX ROAD, LONDON N1 8LN FAX: 071-354 0884 TELEPHONE: 071-359 7121

JOB TITLE CAROL COOPER	DRAWN BY	SCALE 1:200	DATE 5.95
DRAWING TITLE PROPOSED ELEVATIONS AA & BB	JOB No. 92/442	DWG No. PL04	REV. No. 1