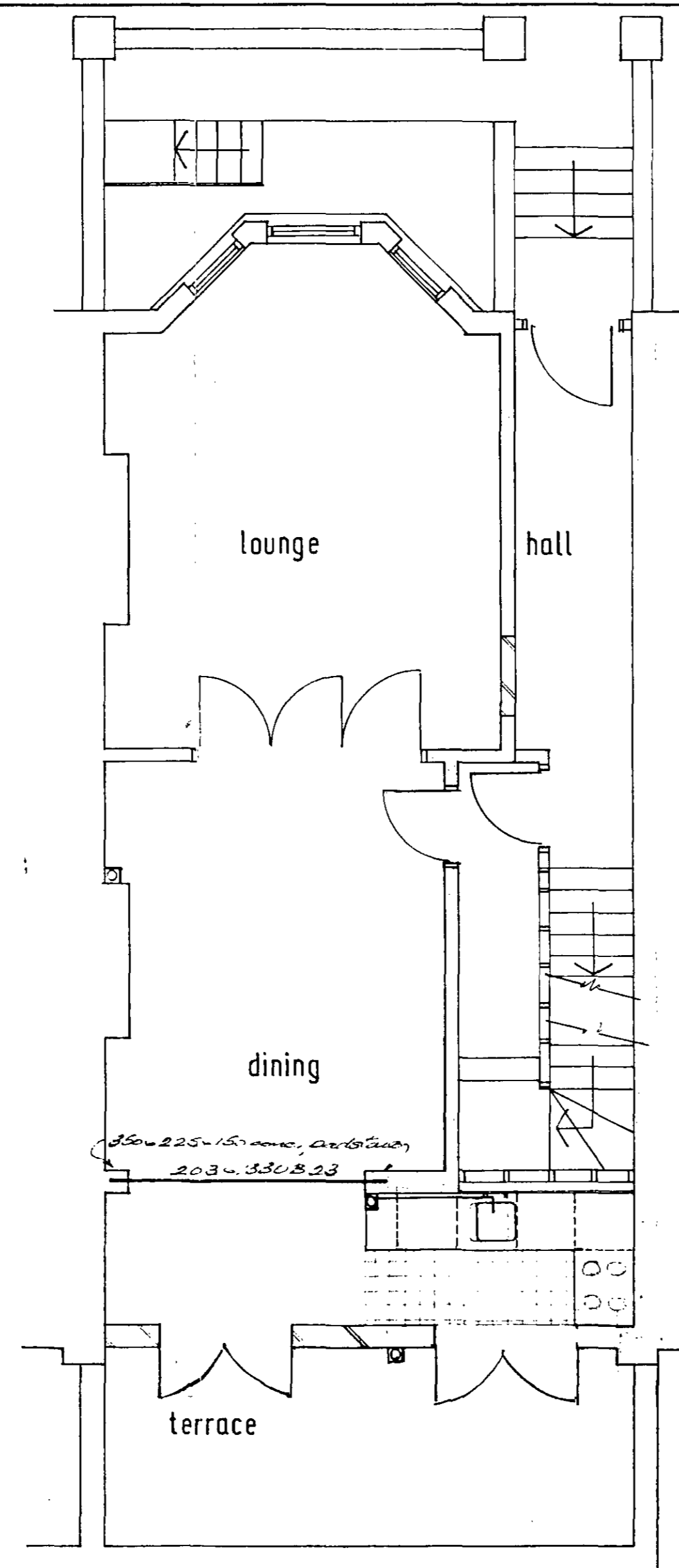
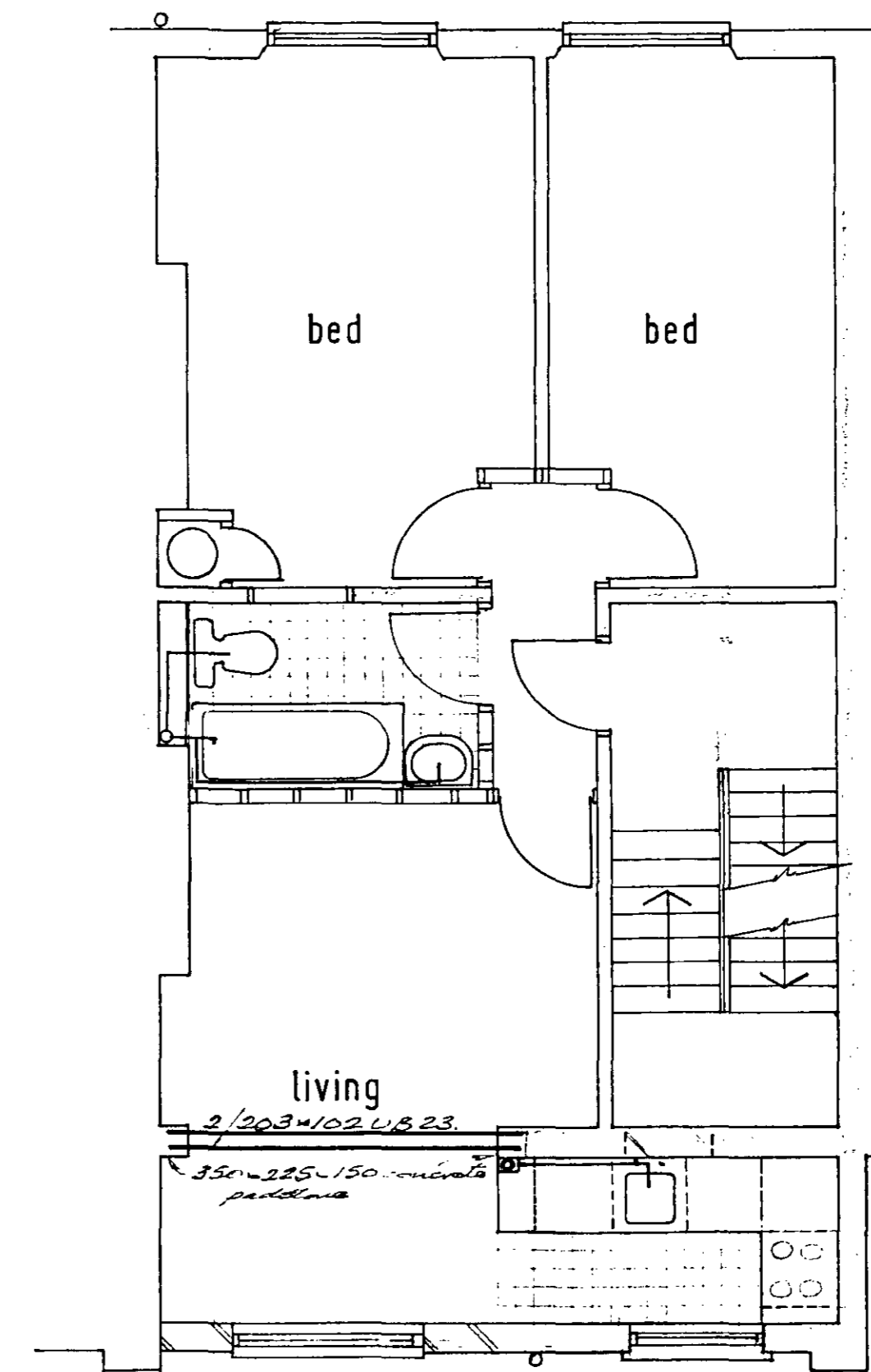


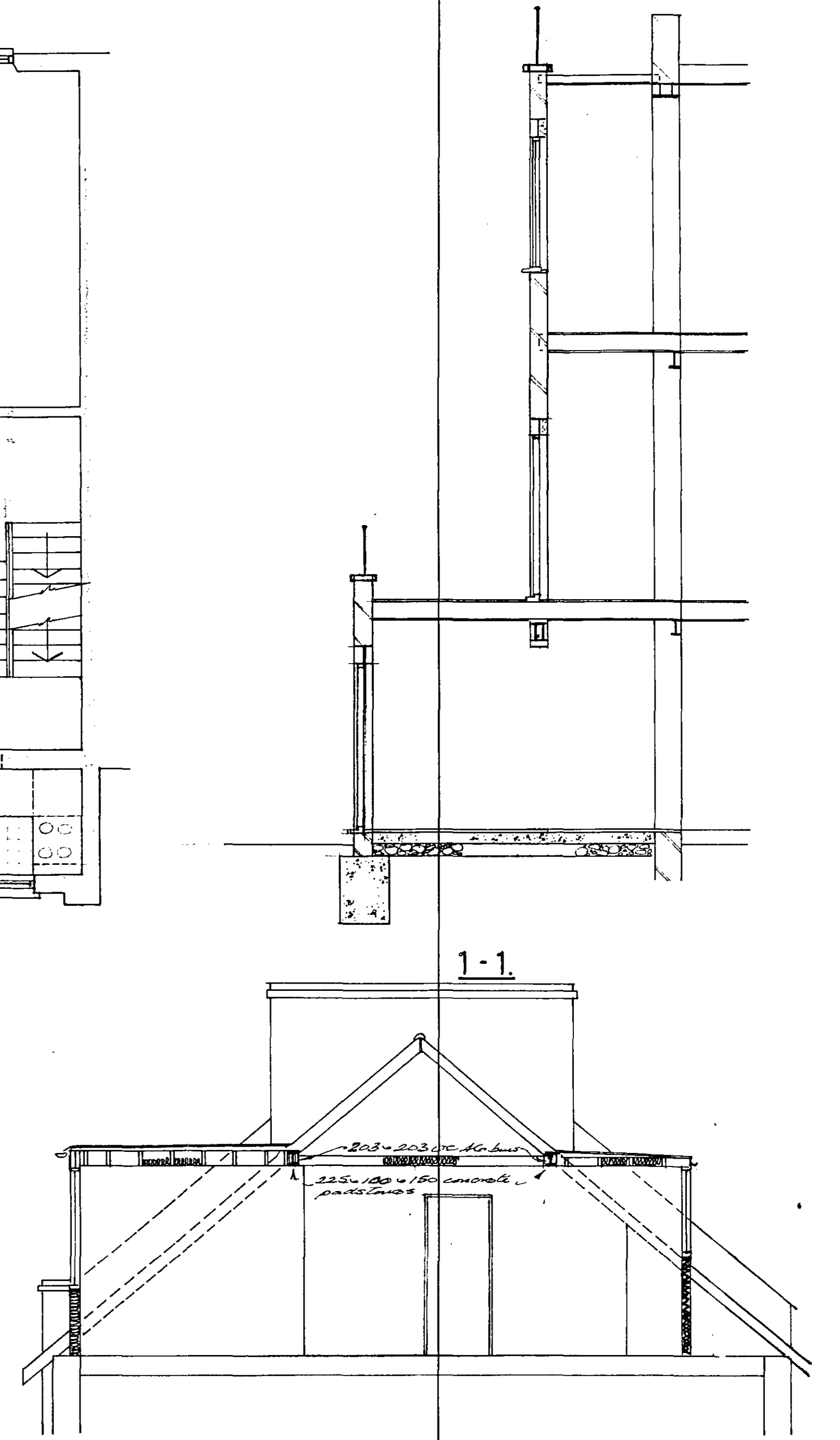
BASEMENT.



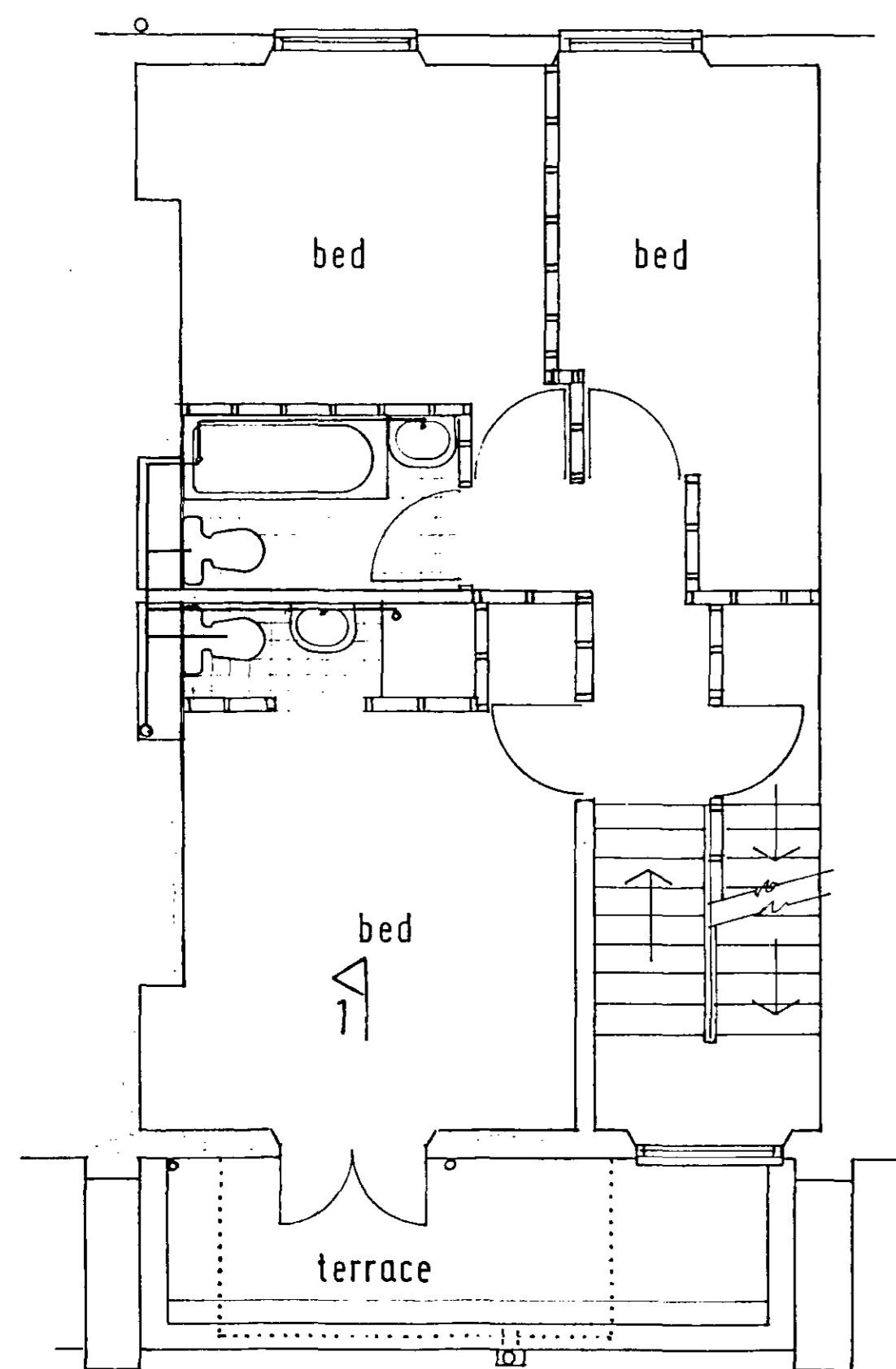
GROUND FLOOR.



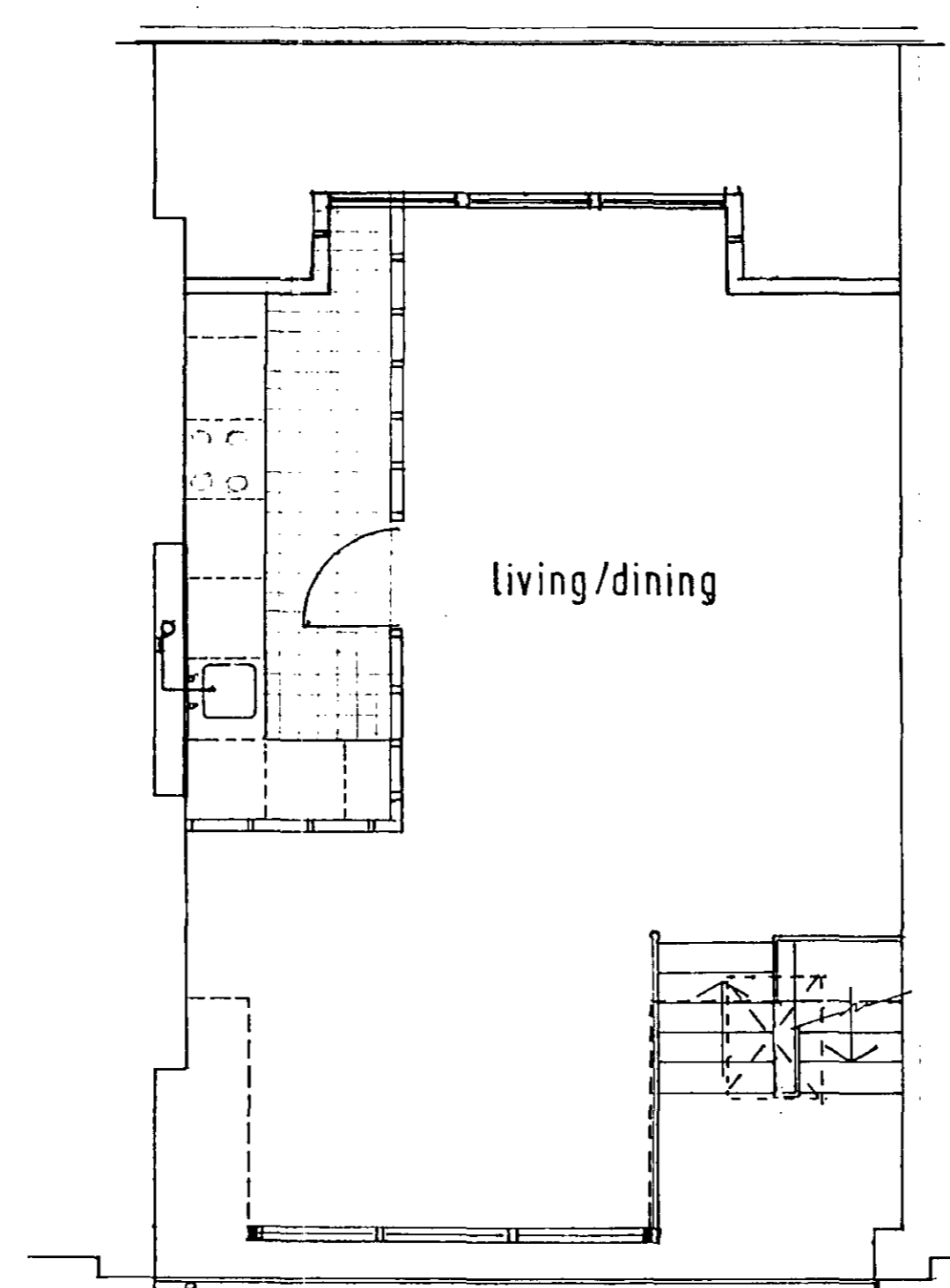
FIRST FLOOR.



Notes



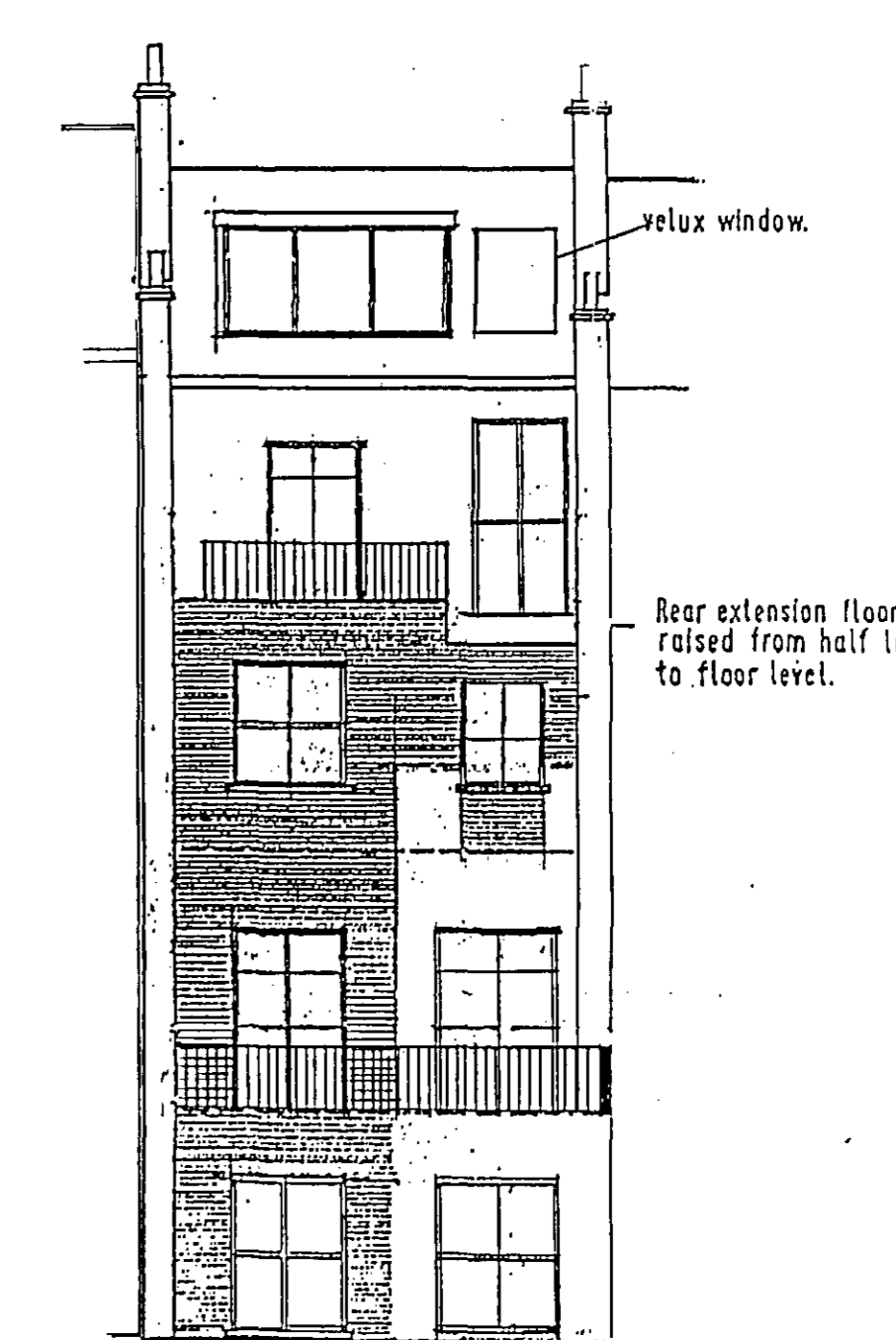
SECOND FLOOR.



THIRD FLOOR.



FRONT ELEVATION.



REAR ELEVATION.

LONDON BOROUGH OF CAMDEN
ENVIRONMENT DEPT.
PLANNING, REGENERATION & RECREATION
23 APR 1993
RECEIVED

CASE COPY
LONDON BOROUGH OF CAMDEN
TOWN AND COUNTRY PLANNING ACTS
25 JUN 1993
APPROVED
PLANS NOT APPROVED
ON BEHALF OF THE COUNCIL

Ref.	Date	Revision
PROPOSED FLOOR PLANS.		
18, AINGER ROAD, LONDON NW3.		
TP9300053R1		
D. W. JONES. Consulting engineer.		
7 Gravel Hill, Leatherhead, Surrey, KT22 7HG. Tel. Leatherhead 375268		
Drawn	Checked	Contract/Drawing Number
Scales 1:50		9253/2
Date DECEMBER 1992		