

28. HARTLAND ROAD TWO FLATS
FIRST AND SECOND FLOORS each 72.56 m² gross

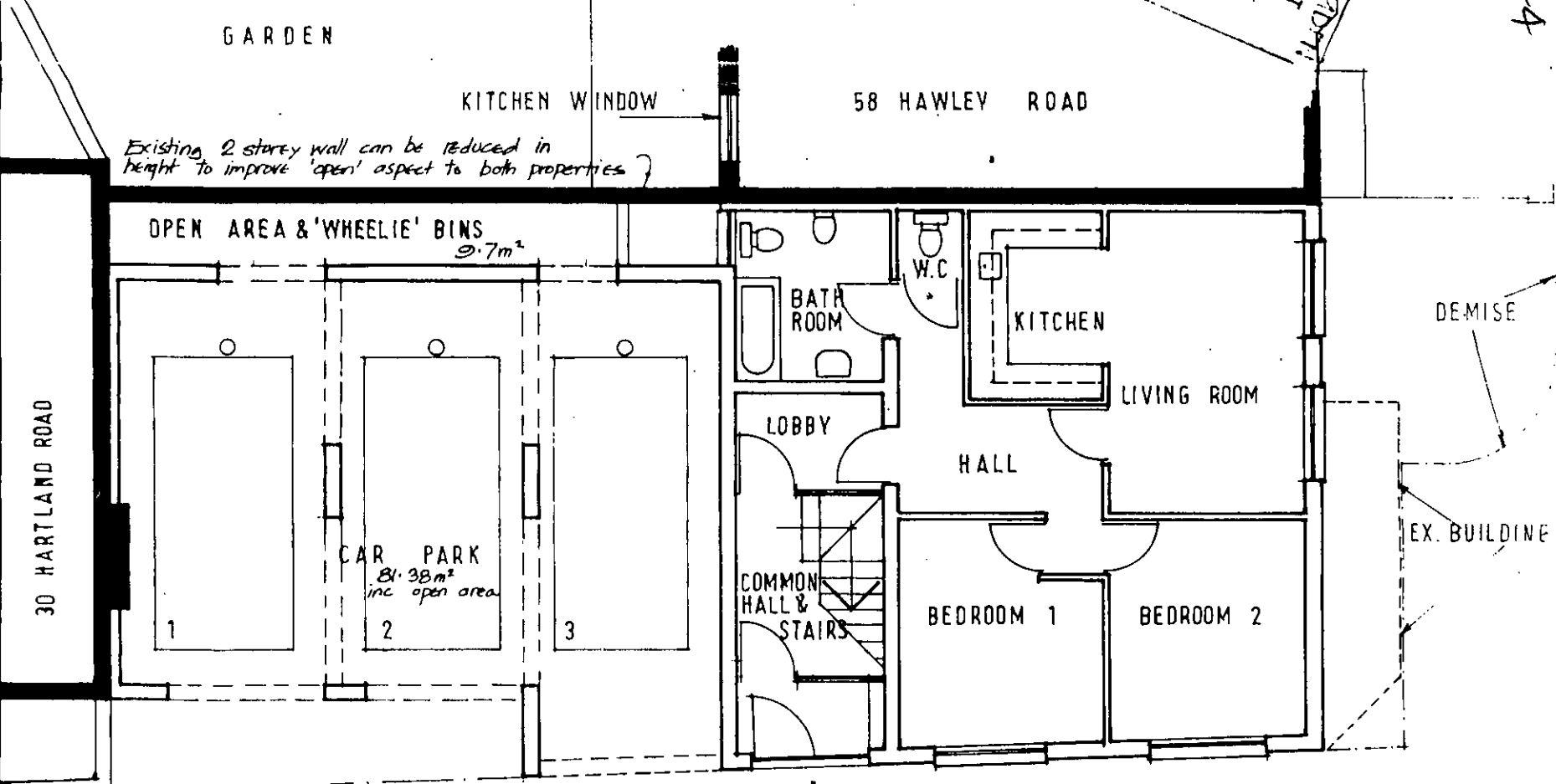
26. HARTLAND ROAD THREE FLATS
FIRST, SECOND & MANSARD FLOORS
each 84.55 gross inc. common areas

UPPER LEVELS

CON BOROUGH OF CAMDEN
PLANNING AND TRANSPORT
DEPARTMENT
18 JAN 1989
RECEIVED

8403044

PRELIMINARY & OUTLINE SKETCH PLANS
 Architects Associates
 draw: A. Parry
 date: 8 JUL 89
 scale: 1:100 M
 HAR. 200



Existing 2 storey wall can be reduced in height to improve 'open' aspect to both properties

OPEN AREA & 'WHEELIE' BINS
9.7 m²

CAR PARK
81.38 m²
inc open area



LONDON BOROUGH OF CAMDEN
TOWN AND COUNTRY PLANNING ACTS
7 MAY 1989
PLANS NOT APPROVED
ON BEHALF OF THE COUNCIL

GROUND FLOOR PLAN CAR PARK & FLAT 1
28 HARTLAND ROAD NW1

84.55 m² gross
inc. common areas.

NOTES
1. Do not scale from this drawing.
2. In case of any discrepancy in quantity, dimensions, levels, details or any other information for construction, reference should be made to the original drawings and specifications prepared by the architect and not to this drawing.