

GROUND FLOOR PLAN

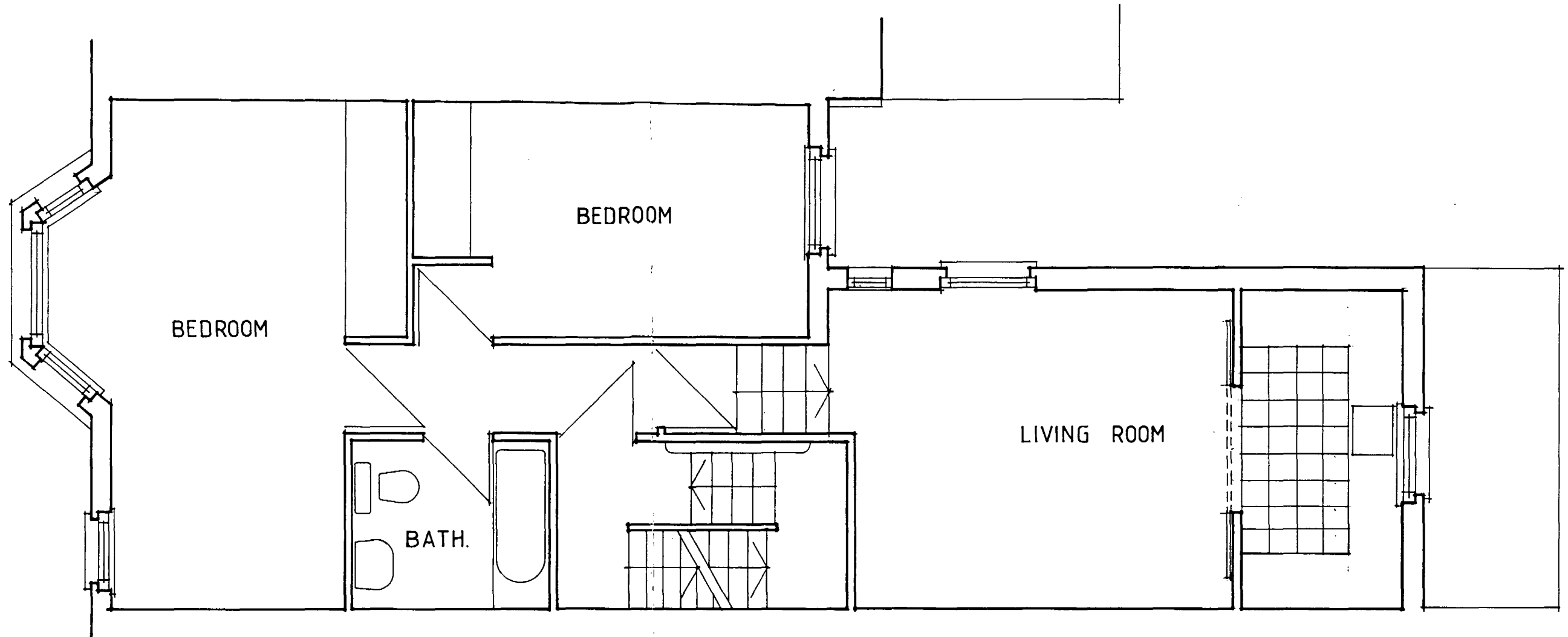
LONDON BOROUGH OF CAMDEN
 TOWN AND COUNTRY PLANNING ACTS
 13 MAY 1989
 PLANS APPROVED
 ON BEHALF OF THE COUNCIL

IP 8905093

IP 8905092-2

Ian Hays Partnership
 1 Perren Street, London NW5 3ED 01-267-7564
 project
 33 COTLEIGH ROAD NW6

drawing PROPOSED PLAN		
scale 1:50	date 1-89	drw by GLM
drawing number 1770/P/1		revision



FIRST FLOOR PLAN

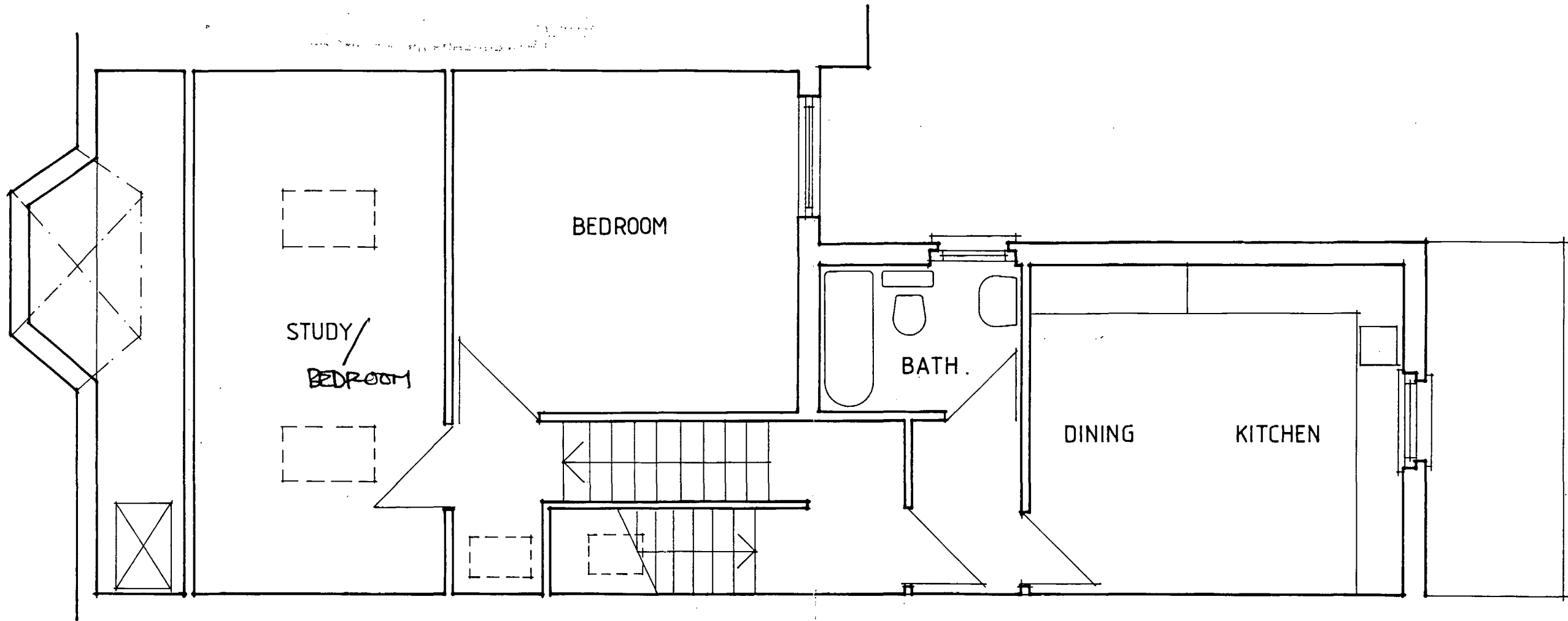
LONDON BOROUGH OF CAMDEN
 TOWN AND COUNTRY PLANNING ACTS
 31 MAY 1989
 PLANS APPROVED
 ON BEHALF OF THE COUNCIL

TP 8905093

TP 8905092

Ian Haye Partnership
 1 Perren Street, London NW5 3ED 01-267-7564
 project
 33, COTLEIGH ROAD NW6

drawing PROPOSED
 PLAN
 scale 1:50 date 1.89 drv.
 drawing number rev.
 1770 / P / 2



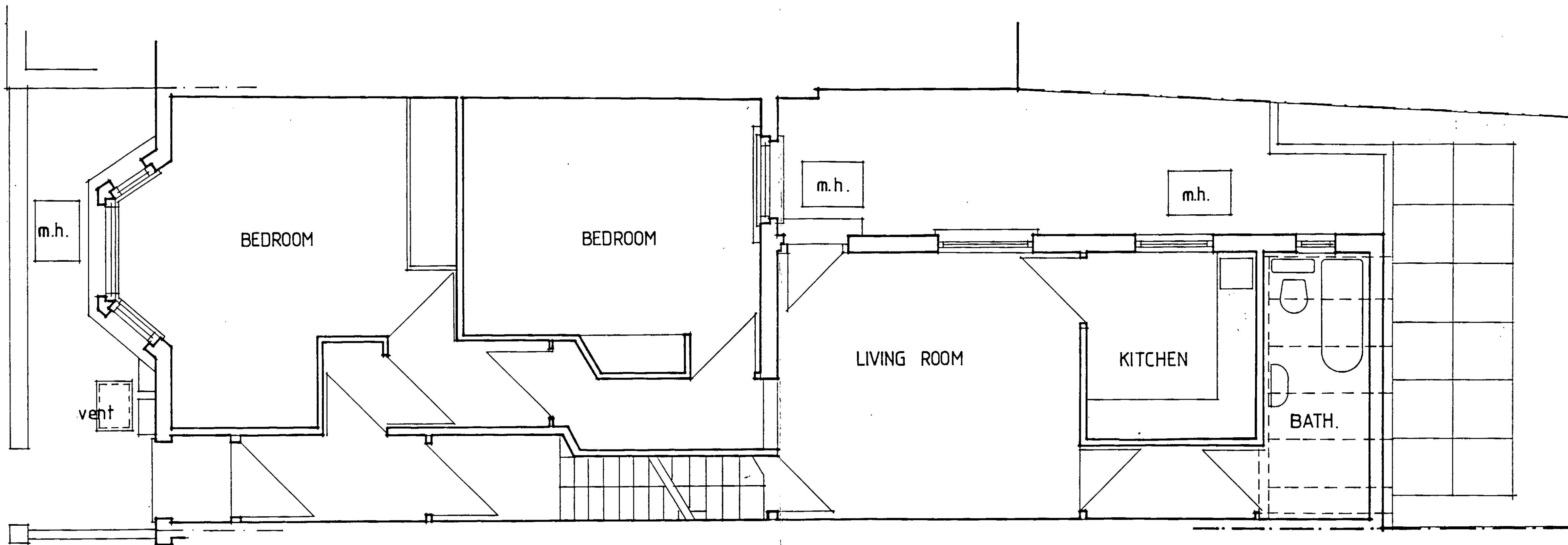
SECOND FLOOR PLAN

LONDON BOROUGH OF CAMDEN
 TOWN AND COUNTRY PLANNING ACTS
 31 MAY 1989
 PLANS APPROVED
 ON BEHALF OF THE COUNCIL

TP 8905893
 TP 8905092.2

Ian Hays Partnership
 1 Perren Street, London NW5 3ED 01-267-7564
 project
 33, COTLEIGH ROAD NW6

drawing PROPOSED
 PLANS
 scale 1:50 | date 1.89 | drw by GLM
 drawing number 1770/P/3 | revision



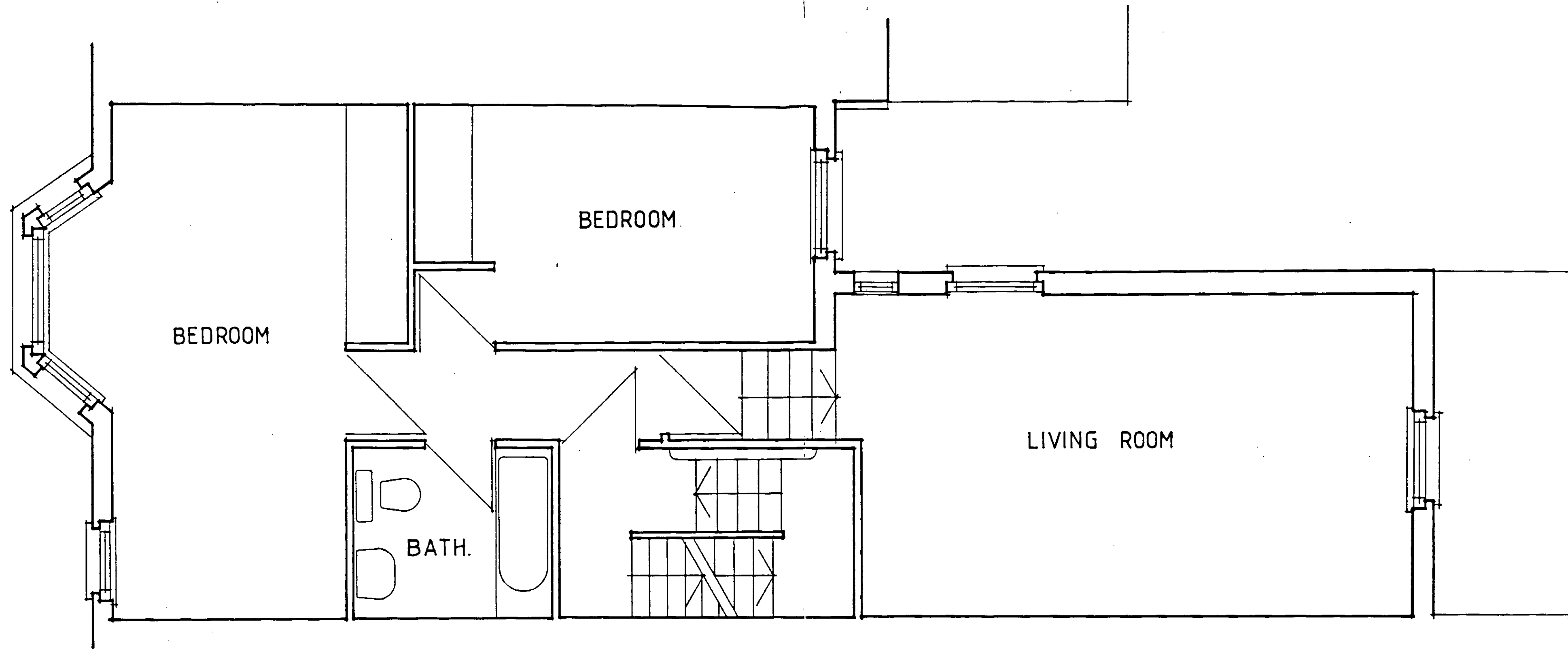
GROUND FLOOR PLAN

LONDON BOROUGH OF GAMDEN
 TOWN AND COUNTRY PLANNING ACTS
 31 MAY 1989
 PLANS APPROVED
 ON BEHALF OF THE COUNCIL

TP 8905093

Ian Hays Partnership
 1 Perren Street, London NW5 3ED 01-267-7584
 project
 33 COTLEIGH ROAD NW6

drawing EXISTING		
PLAN		
scale 1:50	date 1-89	drw by GLM
drawing number	revision	
1770/S/1		



FIRST FLOOR PLAN

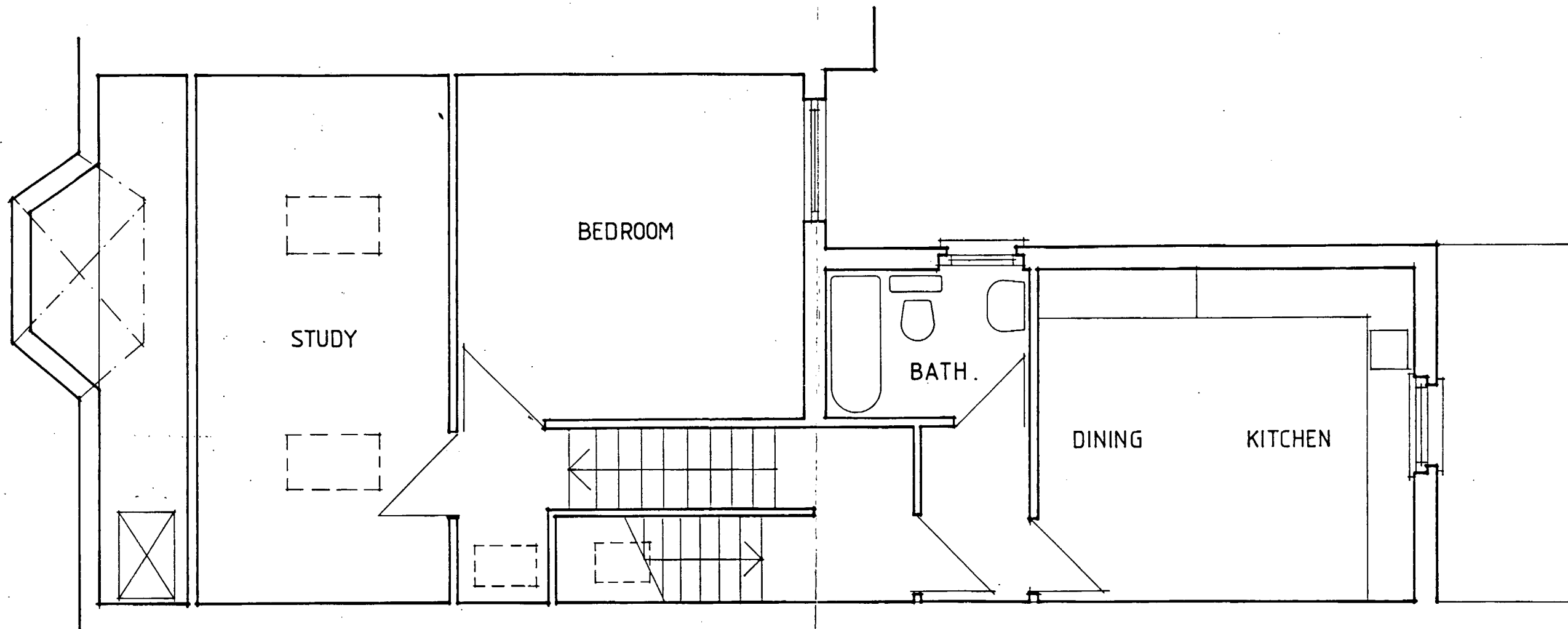
LONDON BOROUGH OF CAMDEN
TOWN AND COUNTRY PLANNING ACTS
3 MAY 1989
PLANS APPROVED
ON BEHALF OF THE COUNCIL

TP 8905093

TP 8905092

Ian Hays Partnership
1 Perren Street, London NW5 3ED 01-267-7584
project
33, COTLEIGH ROAD NW6

drawing EXISTING
PLAN
scale 1:50 | date 1-89 | drw by GLM
drawing number 1770/S/2 | revision



SECOND FLOOR PLAN

LONDON BOROUGH OF CAMDEN
 TOWN AND COUNTRY PLANNING ACTS
 31 MAY 1989
 PLANS APPROVED
 ON BEHALF OF THE COUNCIL

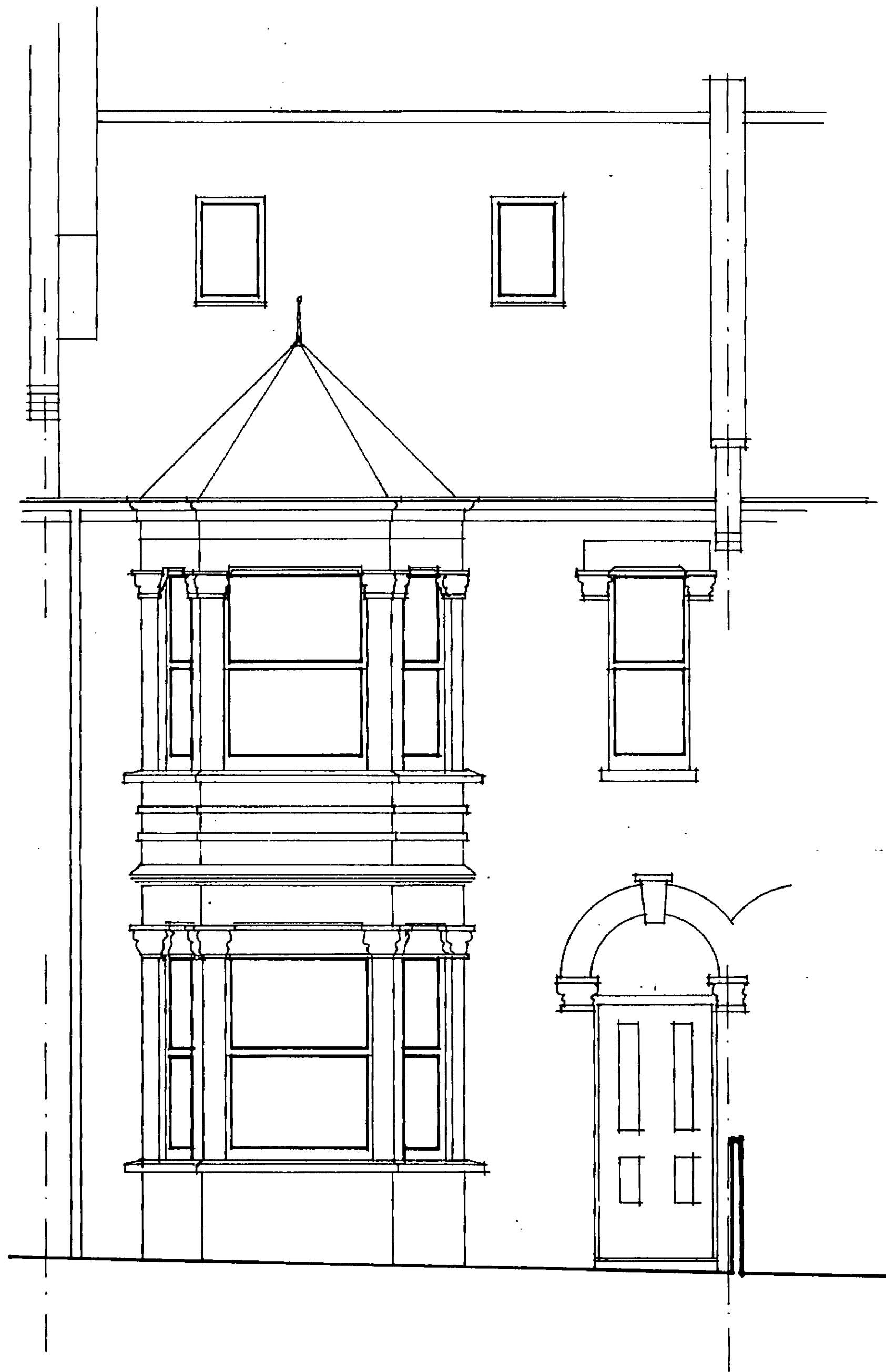
TP 8905093

TP 8905092

Ian Haye Partnership
 1 Perren Street, London NW5 3ED 01-267-7564

project
 33. COTLEIGH ROAD NW6

drawing EXISTING		
PLANS		
scale 1:50	date 1:89	drw by GLM
drawing number	revision	
1770/S/3		



NORTH ELEVATION
NO ALTERATION PROPOSED

TP 8905092

TP 8905093

Ian Hays Partnership

1 Perren Street, London NW5 3ED 01-267-7564

project

33, COTLEIGH ROAD, NW6

drawing EXISTING
ELEVATION

scale 1:50 | date 1.89 | drw by GLM

drawing number 1770/S/4 | revision