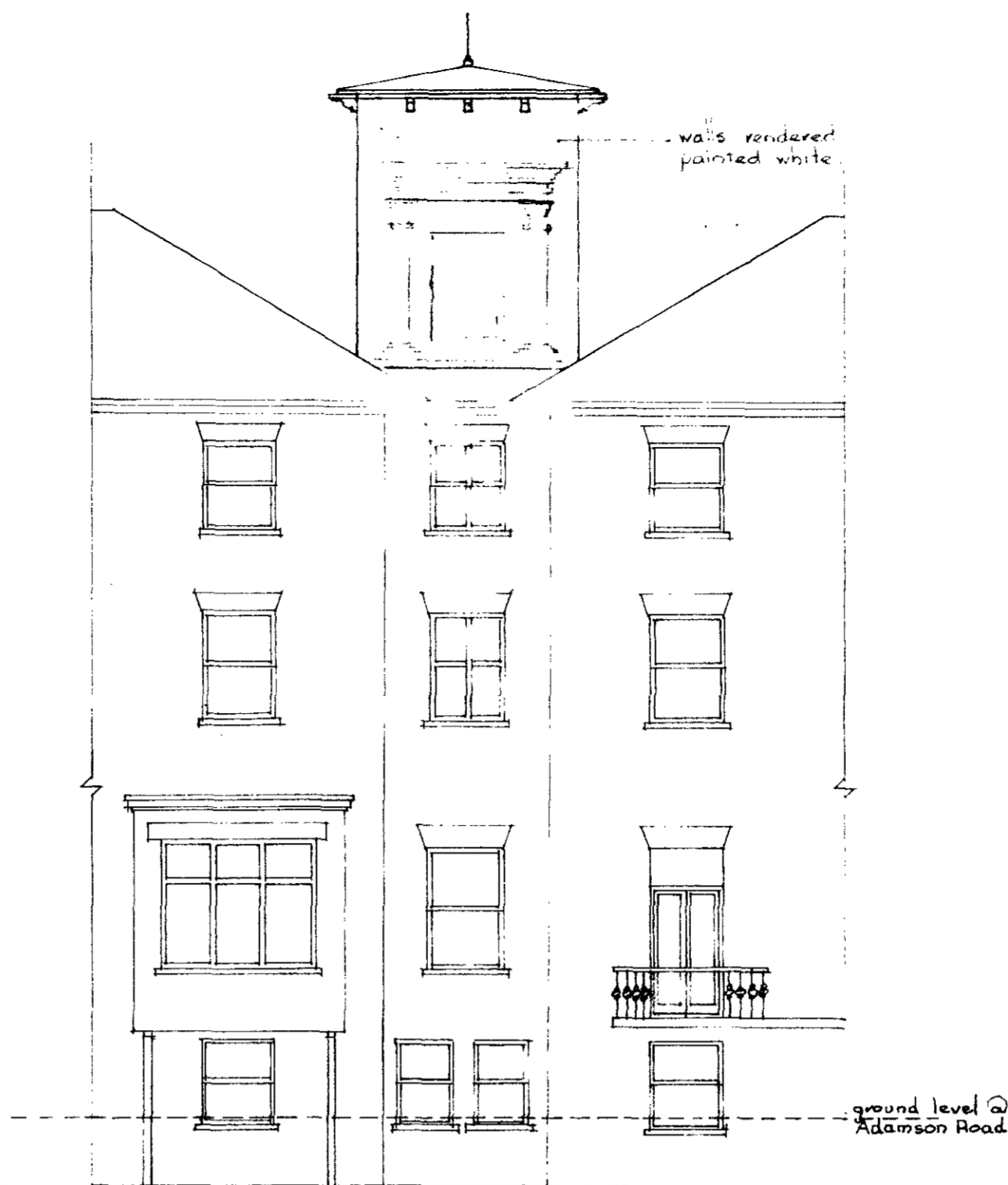
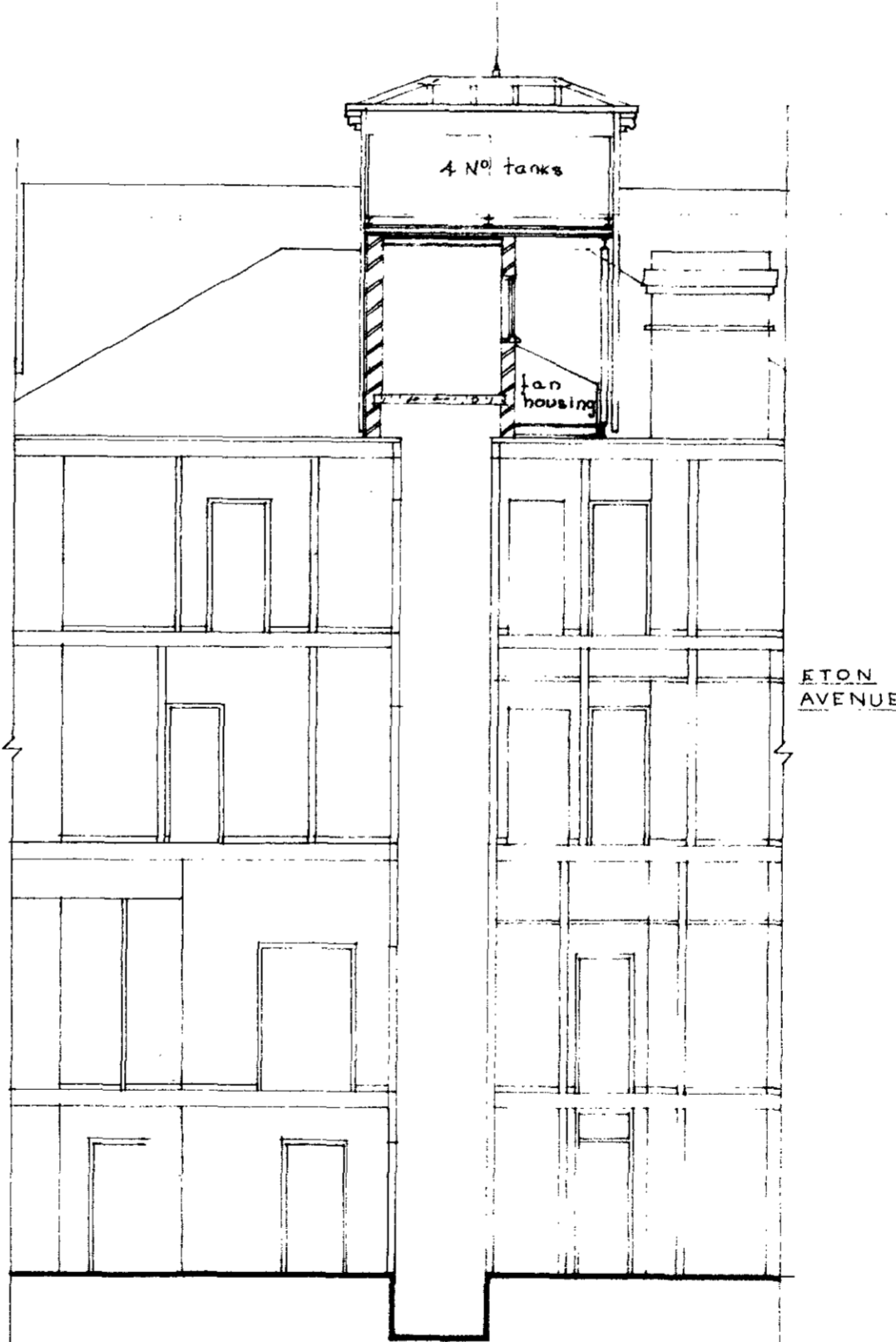
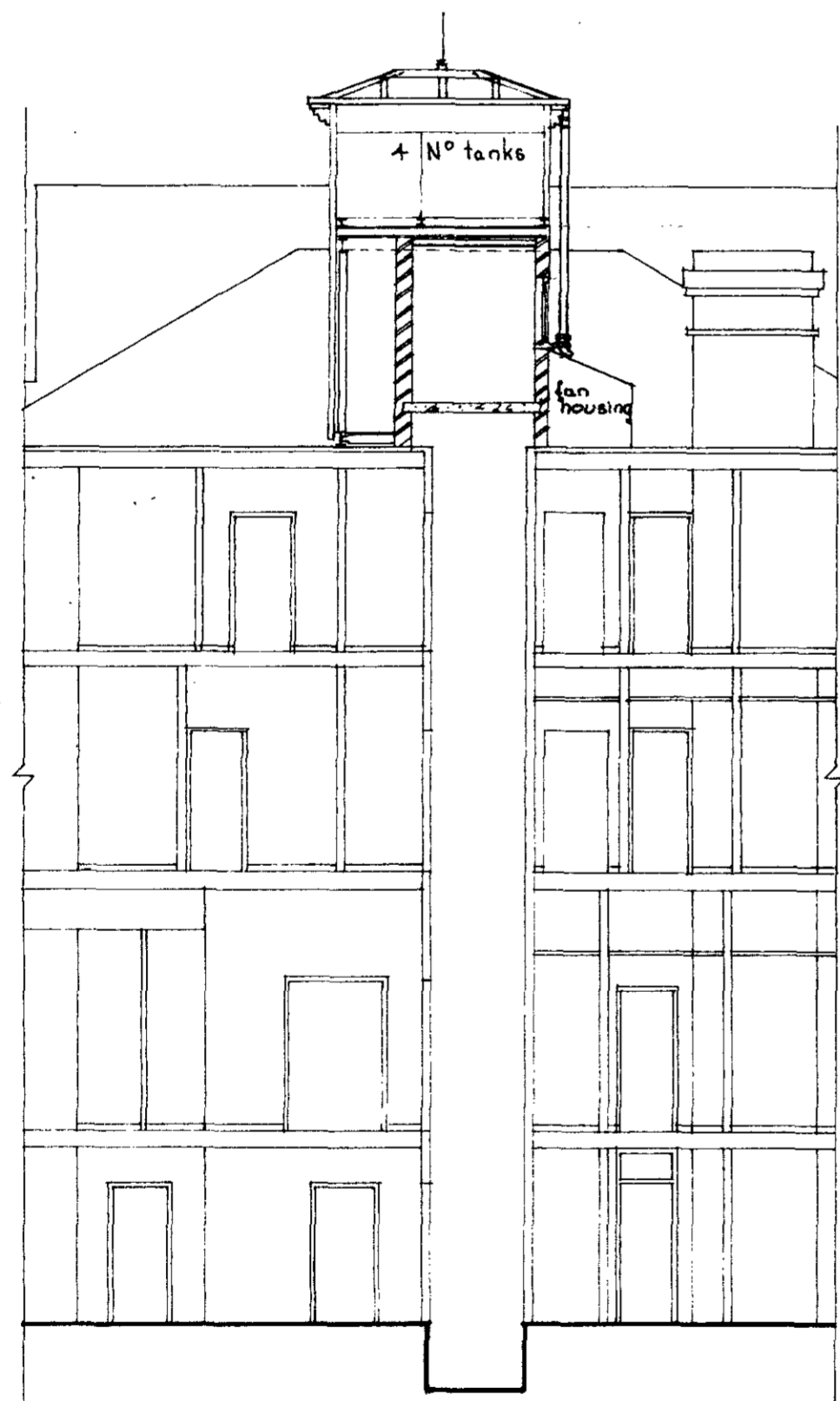




ADAMSON ROAD



ETON AVENUE



REVISIONS

LONDON BOROUGH OF CAMDEN  
 APPROVED  
 PLANS ~~DISAPPROVED~~  
 29 JAN 1969  
 ON BEHALF OF THE COUNCIL

**A. BROOK A.R.I.B.A.**  
 CHARTERED ARCHITECT,  
 SURVEYORS  
 POINT END, STATHERN,  
 NR. MELTON MOWBRAY, LEICS.  
 TELEPHONE HARBY 469.  
 TITLE: OWH 95

CTF/H7/A/A/6188R

OVERLAY TO  
 SCH/3.

24 & 6 ADAMSON ROAD, SWISS COTTAGE, LONDON N.W.3.

DATE: 20.12.68. DRAWN: K.J.E.  
 SCALED: 1/8" to 1'-0"  
 DES. NO. SCH/24.