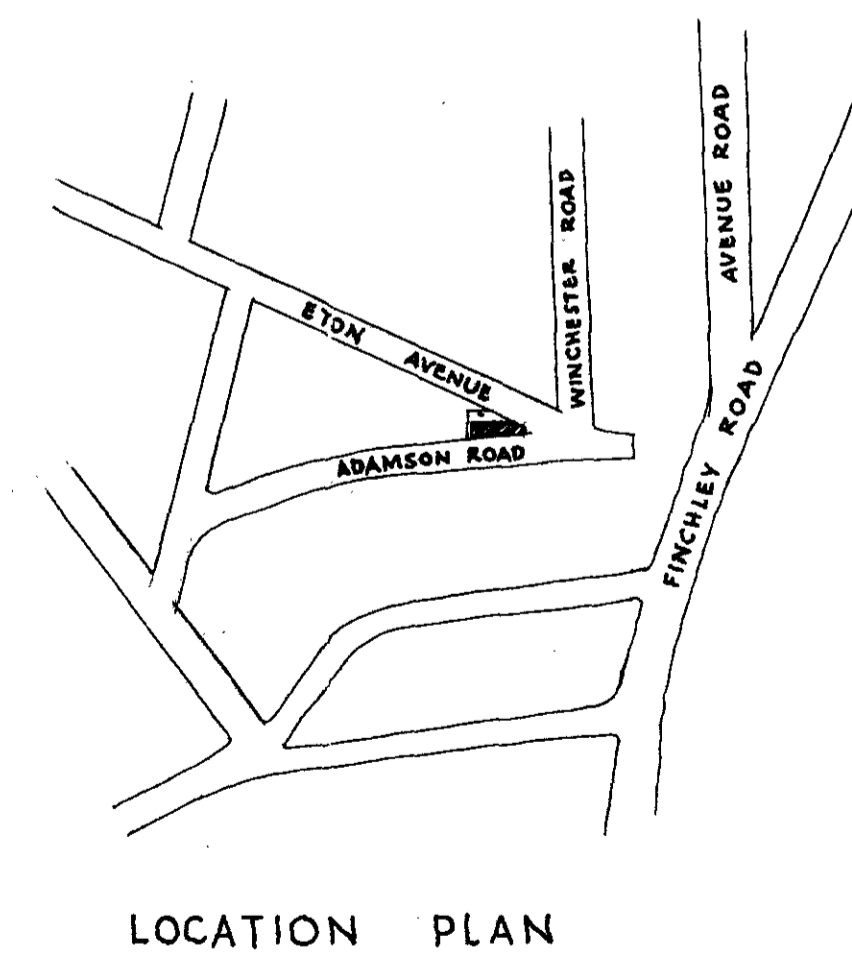
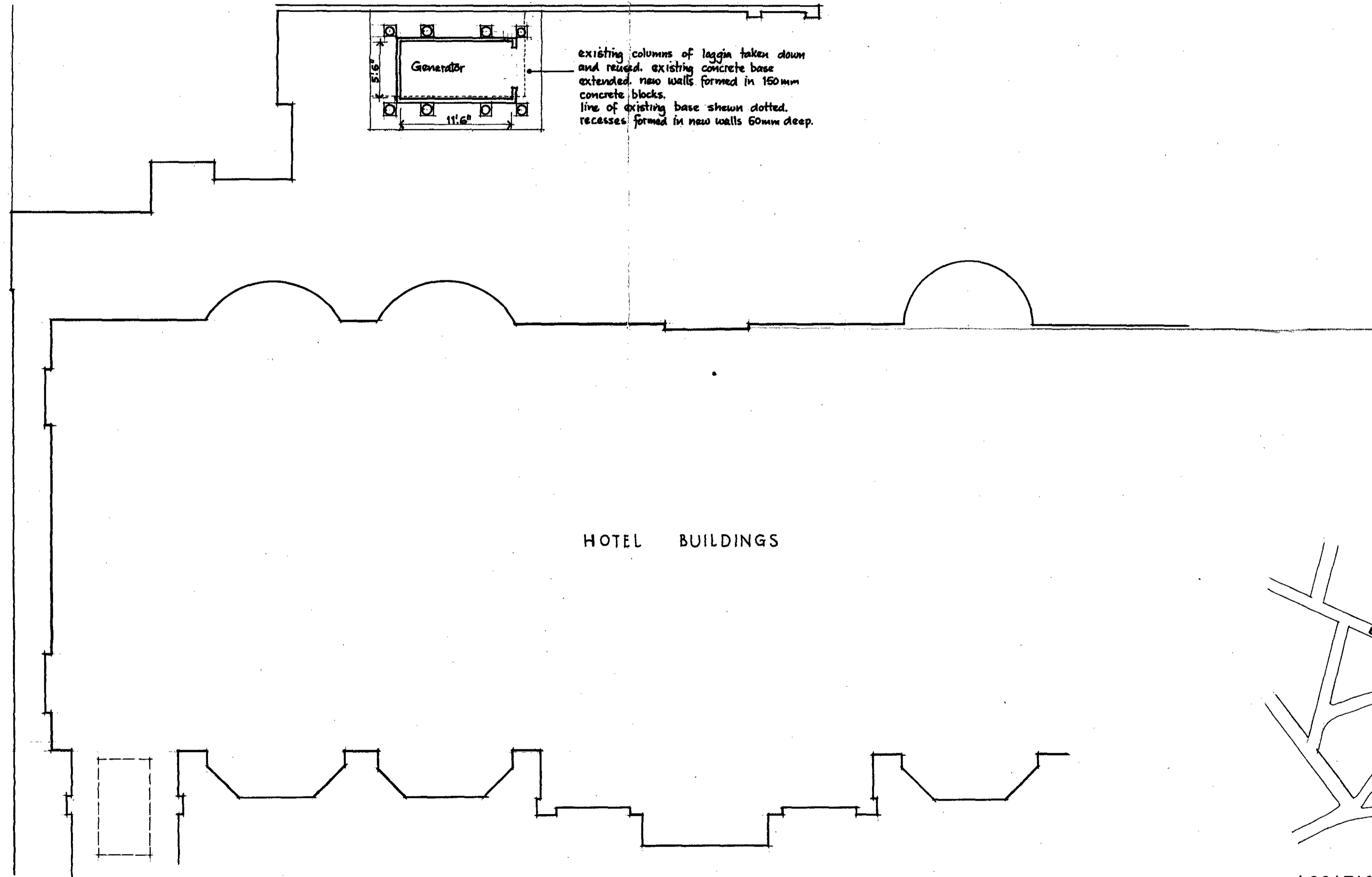
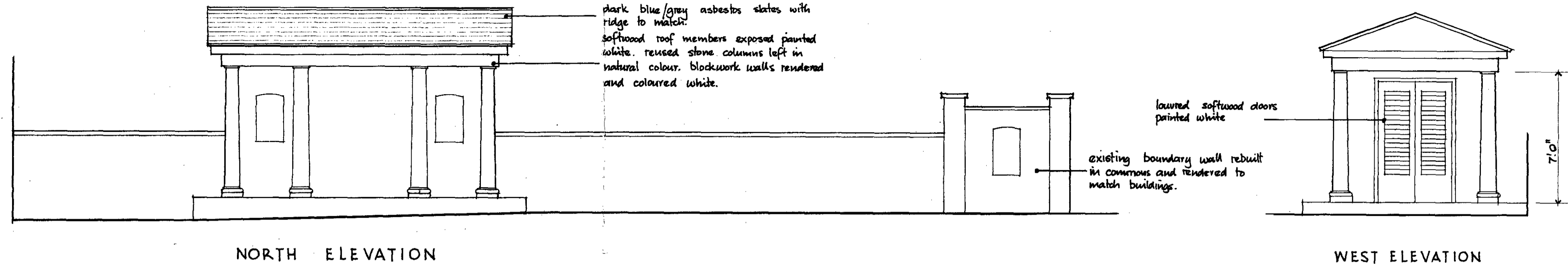


DRG. NO.



NOTES

25996

REVISIONS

LONDON BOROUGH OF HENRY
TOWN AND COUNTRY PLANNING ACT 1979
- APR 1978
PLANS APPROVED
ON BEHALF OF THE COUNCIL

CTP/H7/4/A/85996

R.D. COOK A.R.I.B.A.
CHARTERED ARCHITECT
SURVEYORS
POINT END STATHERN
NR. MELTON MOWBRAY
LEICESTERSHIRE LE14 4HS
TEL. 60469 STD 0948

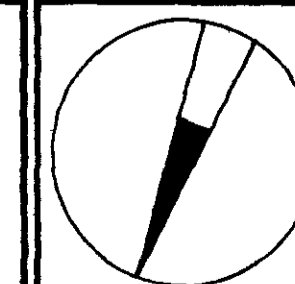
TITLE
PROPOSED GENERATOR HOUSE
GENERAL LAYOUT

DATE : 6 February 1978

DRAWN : J.E.C.

SCALES : 1/4 inch to 8 feet / 1/8 inch to 4 feet.

DRG. NO. : SCH-34



SWISS COTTAGE HOTEL • 4. ADAMSON ROAD • SWISS COTTAGE • LONDON NW3 3HR