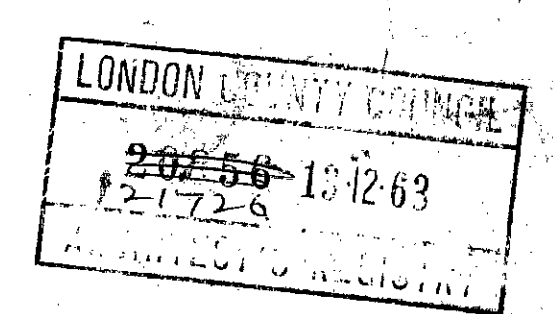


REVISIONS

1. garage ramp turning circle changed. 9.10.61
2. door DG.06 added lobby between entrance to flats & pram store aug. 61
3. position of telephone pipes shown. 8.11.61
4. shop N°6 more dimensions 3.1.62
5. building line amended to comply LCC requirements 2.2.62
6. dimensions amended 12.2.62
7. garage dimensioned " " "
8. grid line C repositioned shop staircase openings added columns outline A repositioned 5.6.62
9. Shop No.1. Hole in slab to house vent duct. 11.8.62
10. Entrance Hall to Offices revised 14.8.62
11. Pavement light to shop No.1 reduced " " "
12. Temporary staircase to flats included " " "
13. Spine wall to Stair 3 revised " " "
14. Escape door opening from Shop No.6 to 15. DG.00 removed. " " "

NOTES

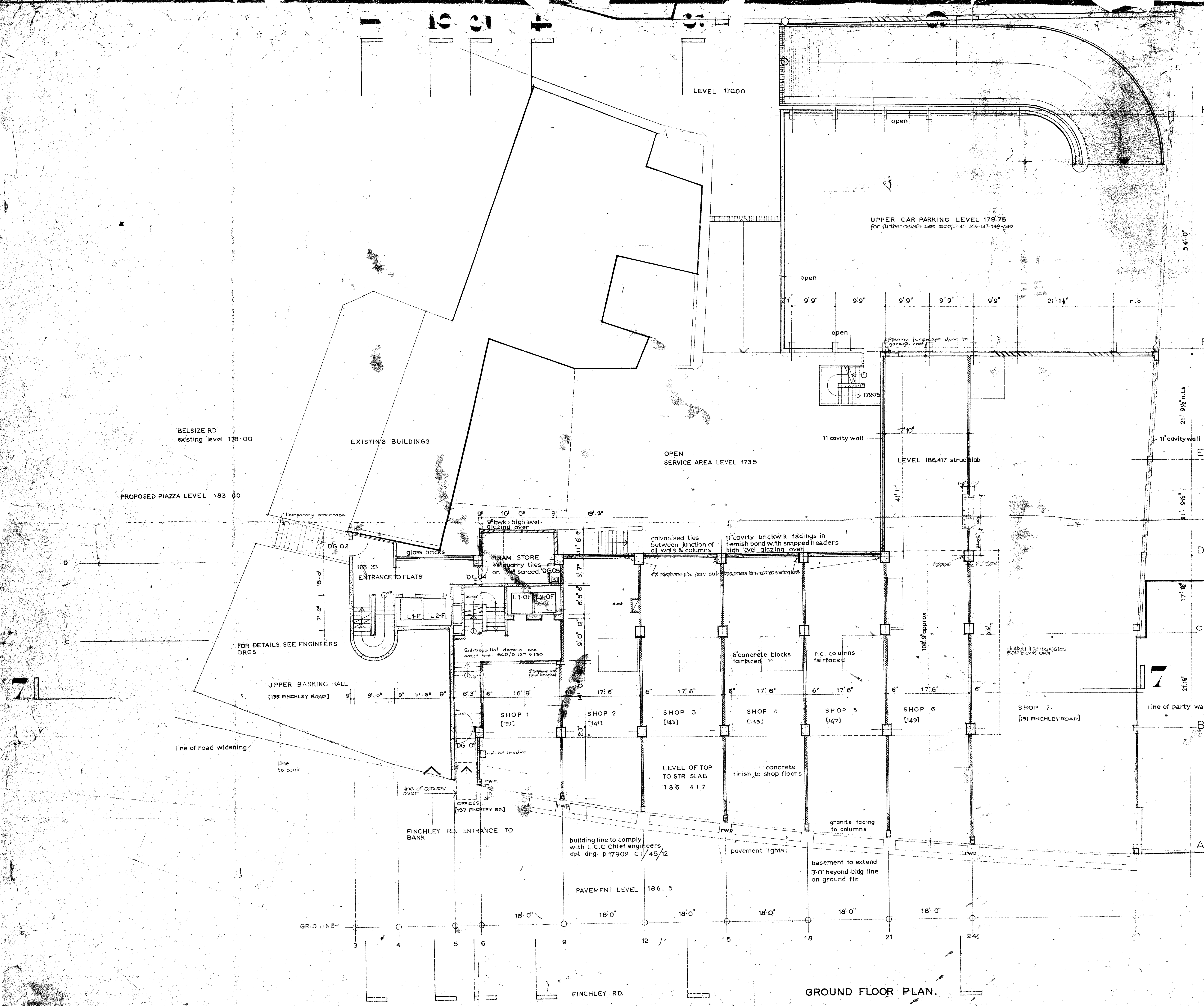
1. FOR GARAGE DETAILS SEE DRGS. SCD-D 145-146-147-148-149
2. ALL DRGS TO BE READ IN CONJUNCTION WITH ENGINEERS DRGS.



SCD C-105

Douglas Stephen & Partners chartered architects
 15, FINCHLEY STREET, LONDON, W11 HUNTER BLDG.
 SWISS COTTAGE DEVELOPMENT FOR ARAL INVESTMENTS LTD
GROUND FLOOR PLAN
 SCALE: 1/8" = 1'-0" DATE: 30. MAY 61

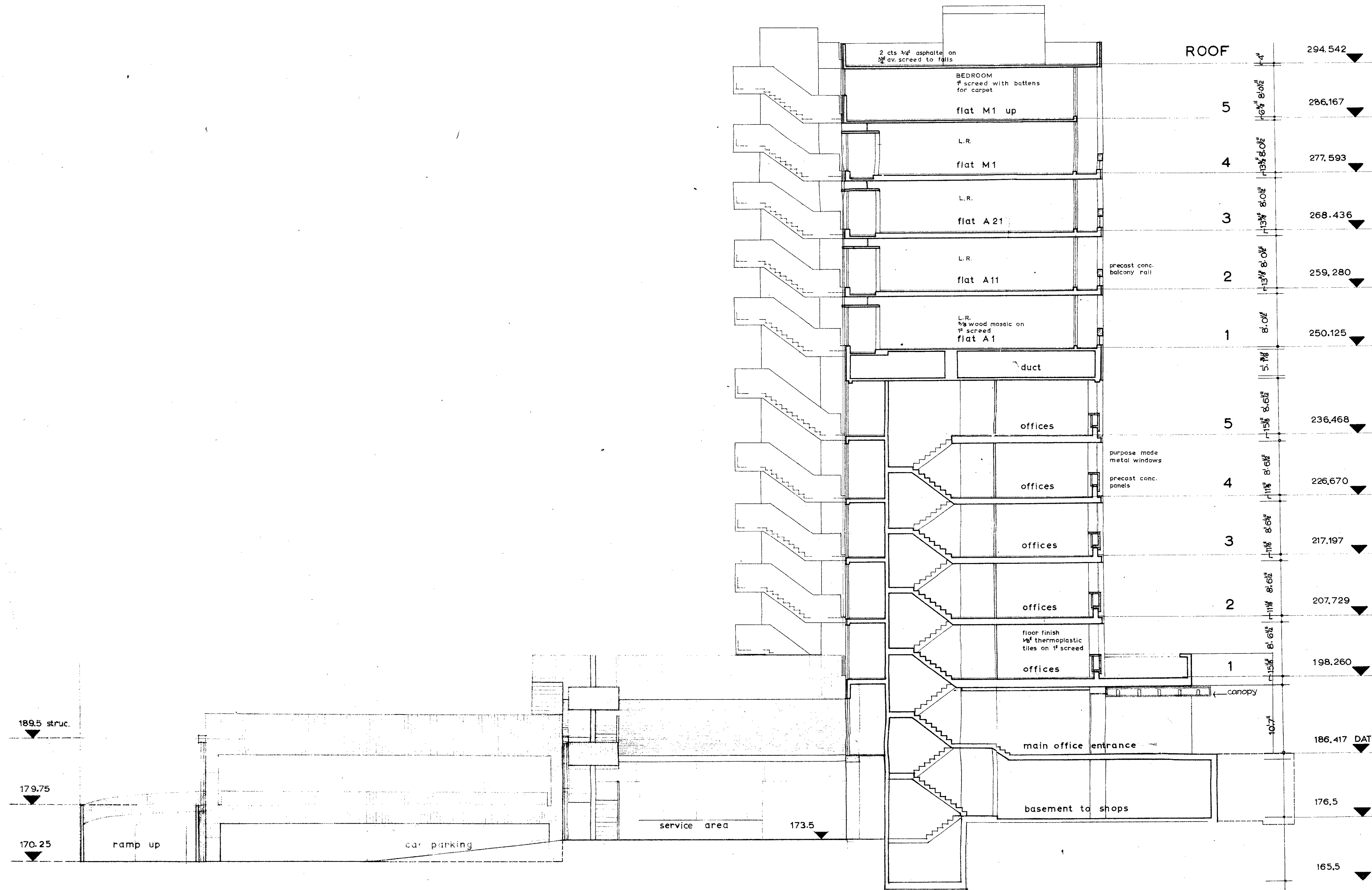
DRAWN: CHECKED: **REV**



GROUND FLOOR PLAN.

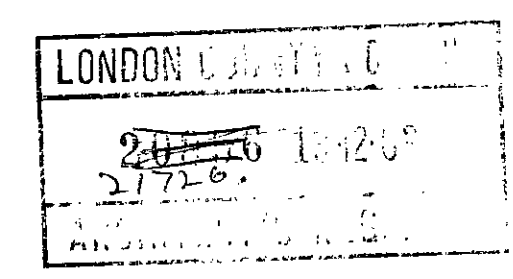
REVISIONS

1. garage levels.	11.10.61
2. garage cantilever and brickfill panels removed.	24.10.61
3. escape stairs from terrace to service level amended.	16.2.62



SECTION. 3-3

NOTES



SCD C-109

Douglas Stephen & Partners chartered architects
 100 WIMBORNE STREET LONDON W1 HUNTER 0607
 SWISS COTTAGE DEVELOPMENT FOR ARAL INVESTMENTS, LTD
 SECTION. 3-3.
 SCALE. 1/8" = 1'-0" DATE: 30. MAY. 61.

DRAWN:	CHECKED:	REV 9
--------	----------	--------------