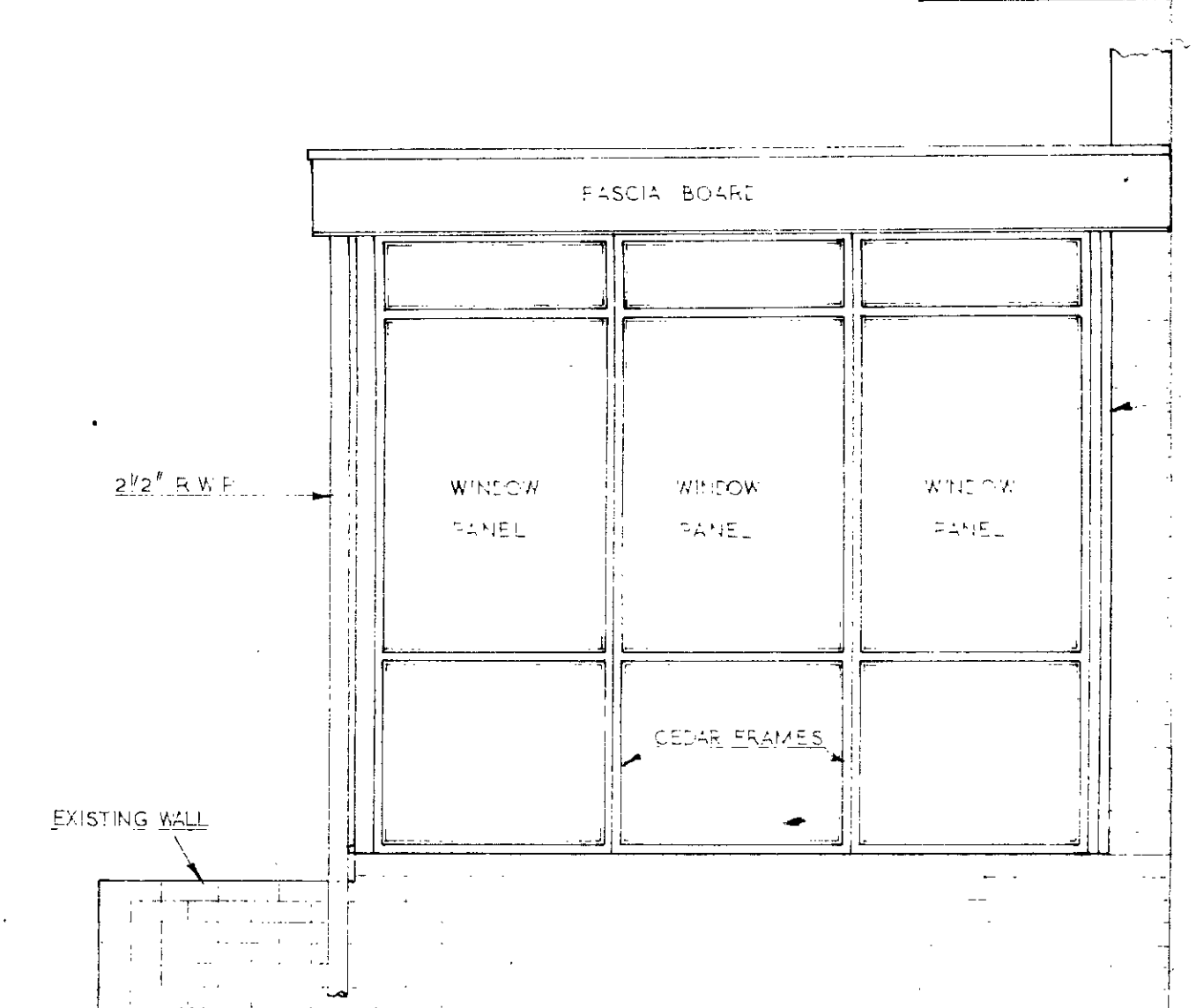
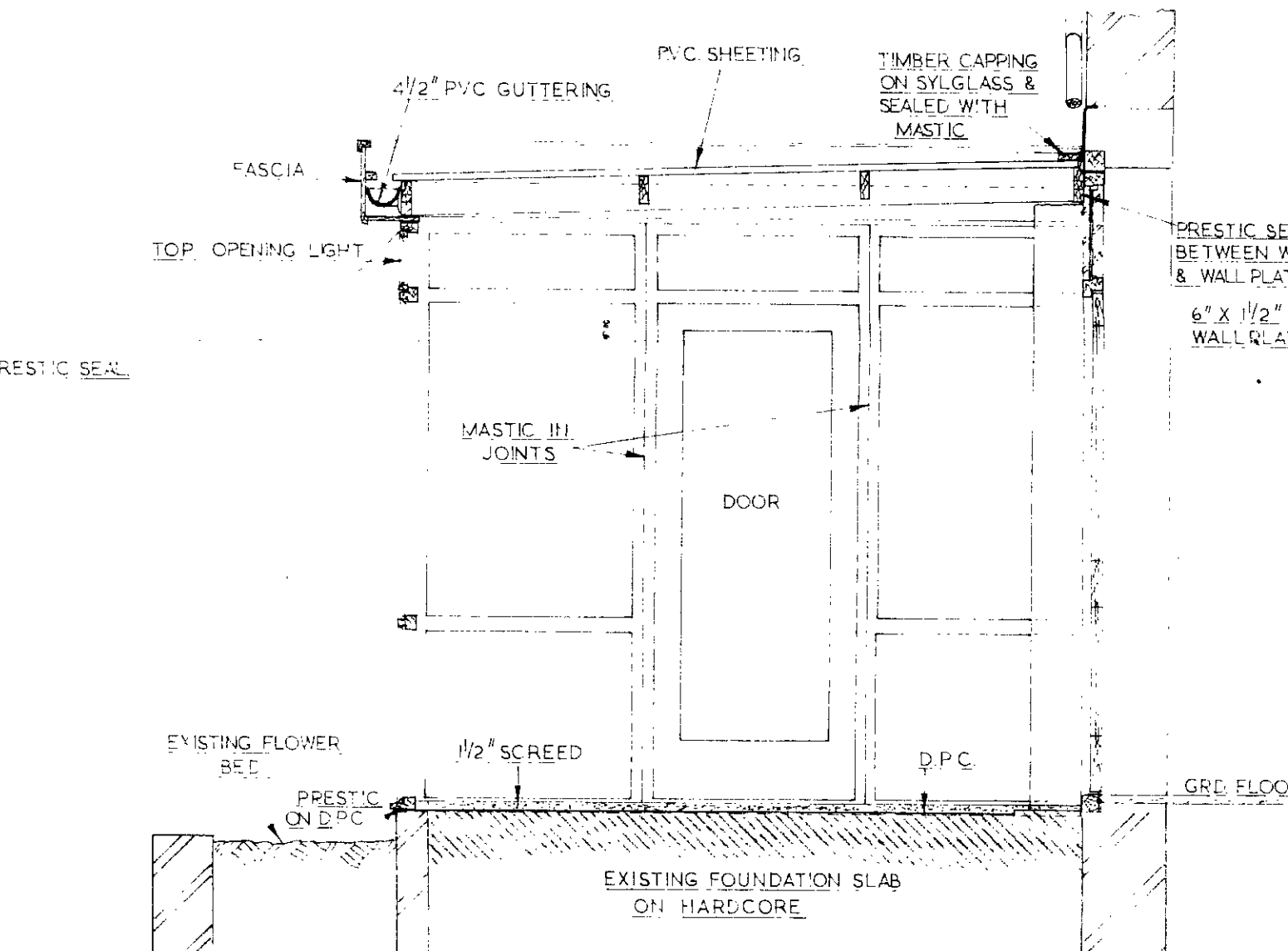


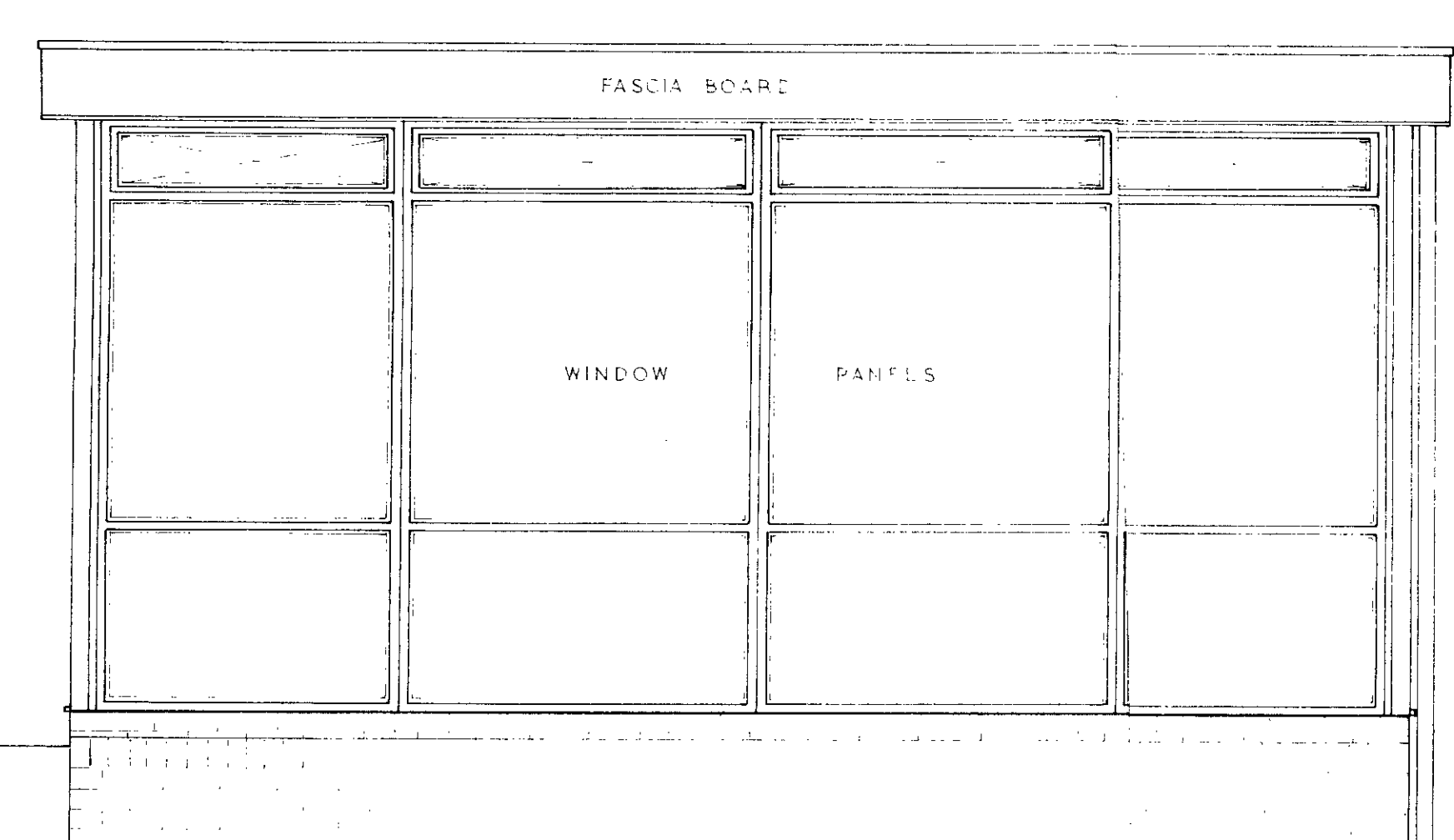
PLAN  
SCALE: 1:2



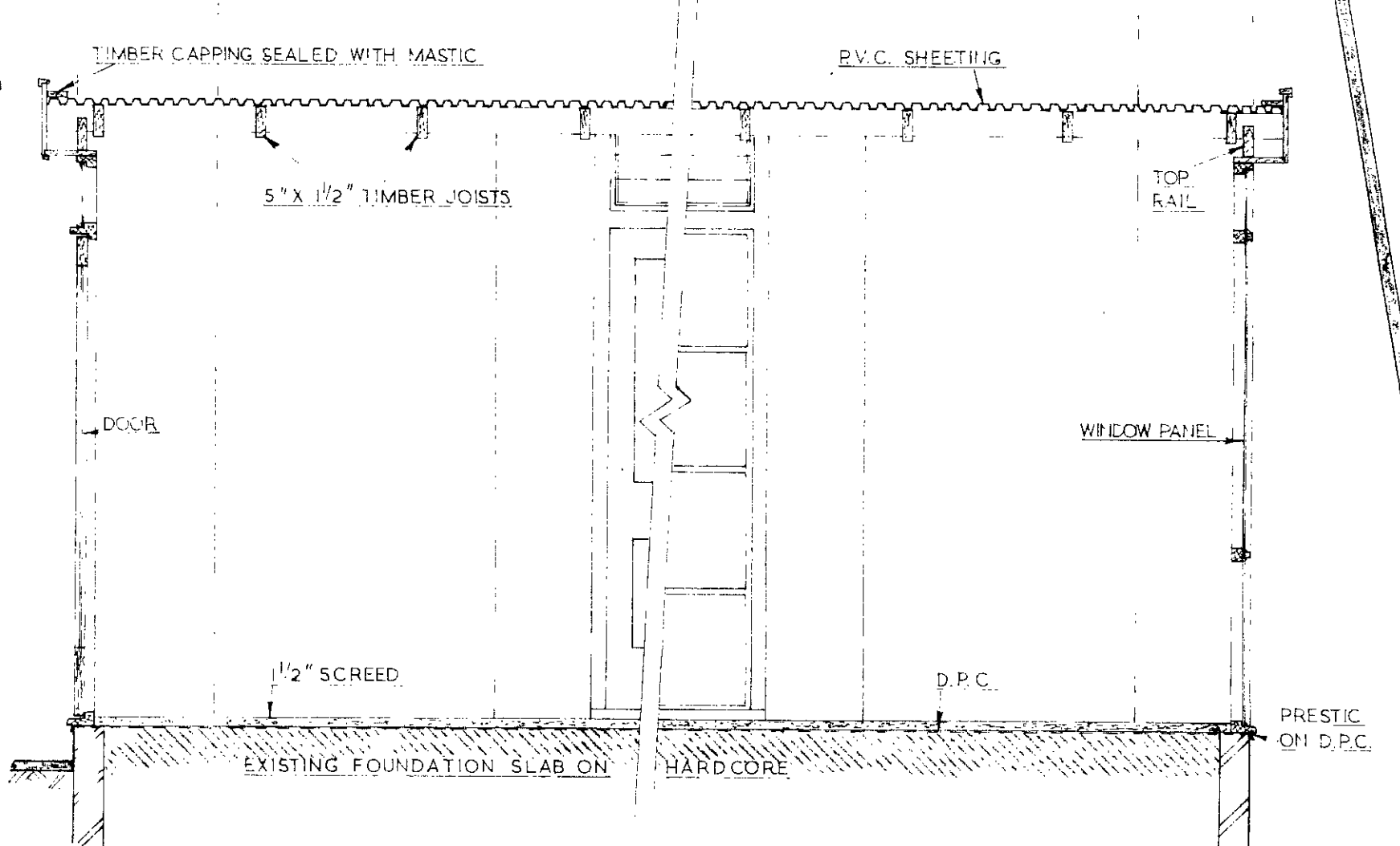
ELEVATION ON X.



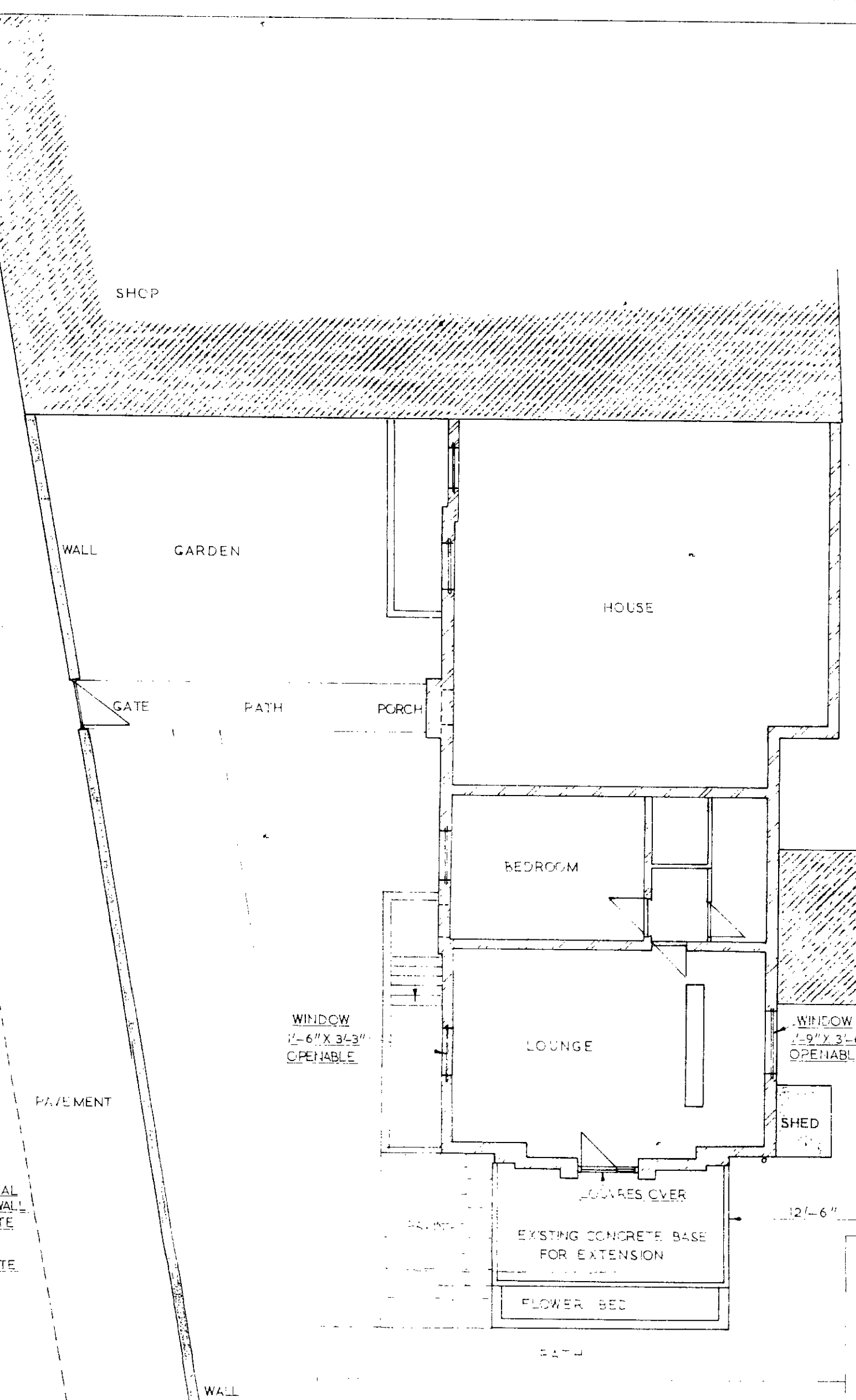
SECTION A-A.



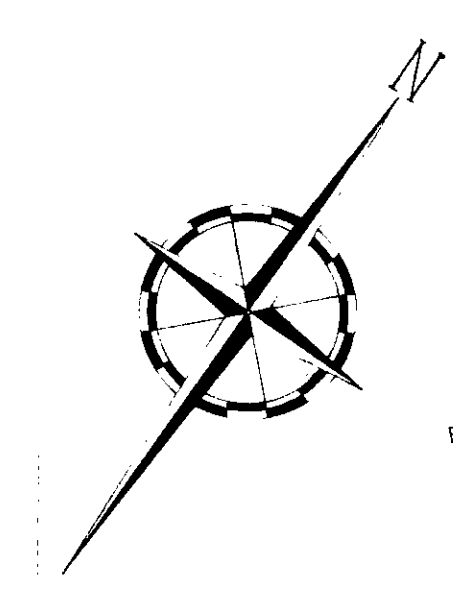
ELEVATION ON Y.



SECTION B-B.



SITE PLAN  
SCALE: 1:100.



KEY PLAN  
SCALE: 1:1250.

GT/18,712/11967

RECEIVED  
DISTRICT SURVEYOR  
27 AUG 1971  
ST. PANCRAS

LONDON BOROUGH OF CAMDEN  
PLANS APPROVED  
DISAPPROVED  
19 OCT 1971  
ON BEHALF OF THE COUNCIL

RECEIVED  
25 AUG 1971  
DISTRICT SURVEYOR  
HAMPSTEAD

REF	REVISION	DATE	BY	NOTES
JOB TITLE: TOWN & SUBURBAN BUILDERS, PROPOSED HARTWELL EXTENSION FOR J.C. GOODWIN ESQ. 238 HAVERSTOCK HILL, HAMPSTEAD, N.W. 3				
DRAWING TITLE: GENERAL ARRANGEMENT.				
DATE: 9/8/71				
DRAWN BY: DRF J.B.				
CHECKED BY: A.R.W.A.				
DRAWING No: 870				
DRAWING No: 10.				

STROYER & ADCOCK  
CONSULTING CIVIL ENGINEERS  
54 LAMPTON ROAD, HOUNSLOW, MIDDLESEX. TEL. 01-570 5661