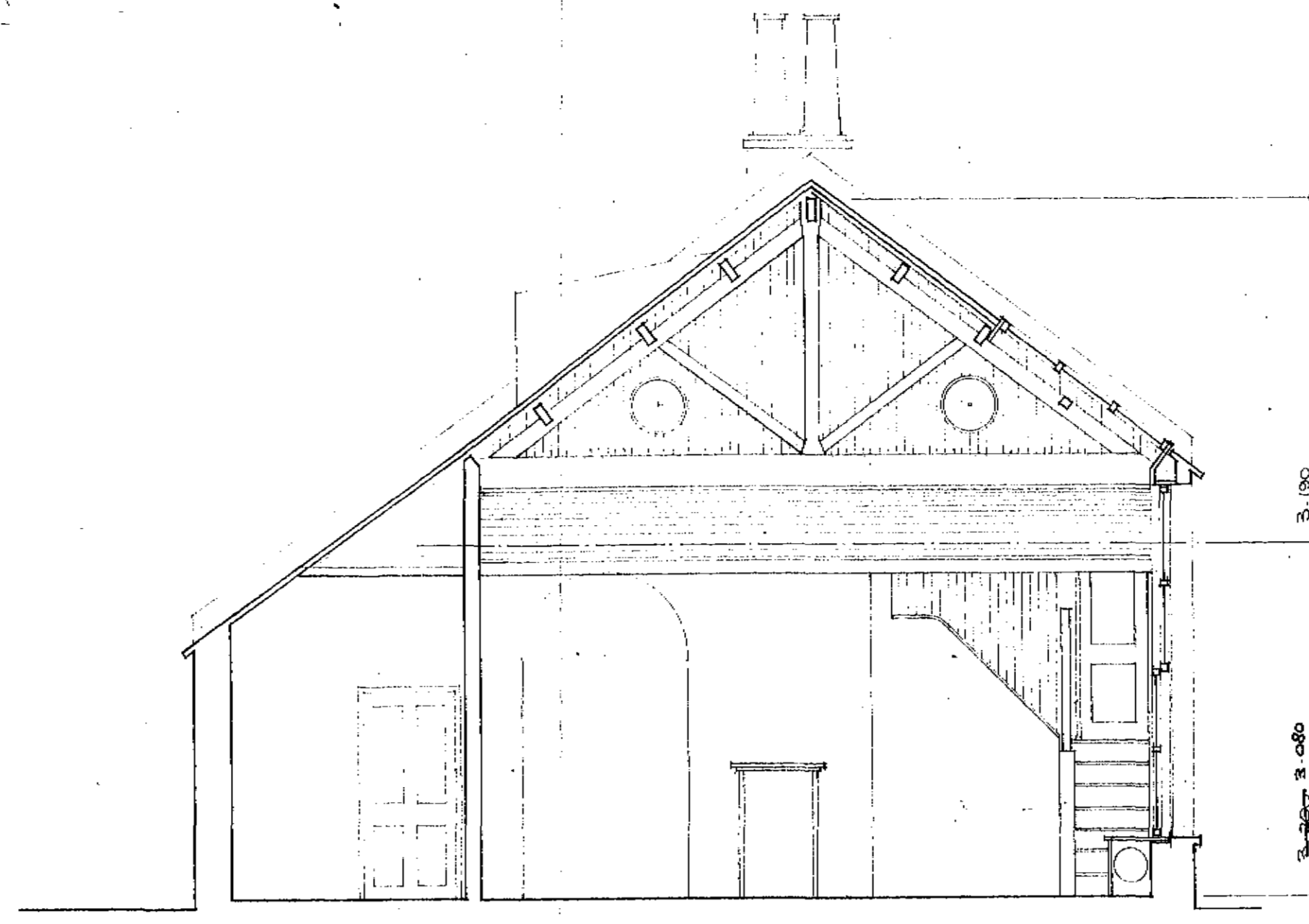
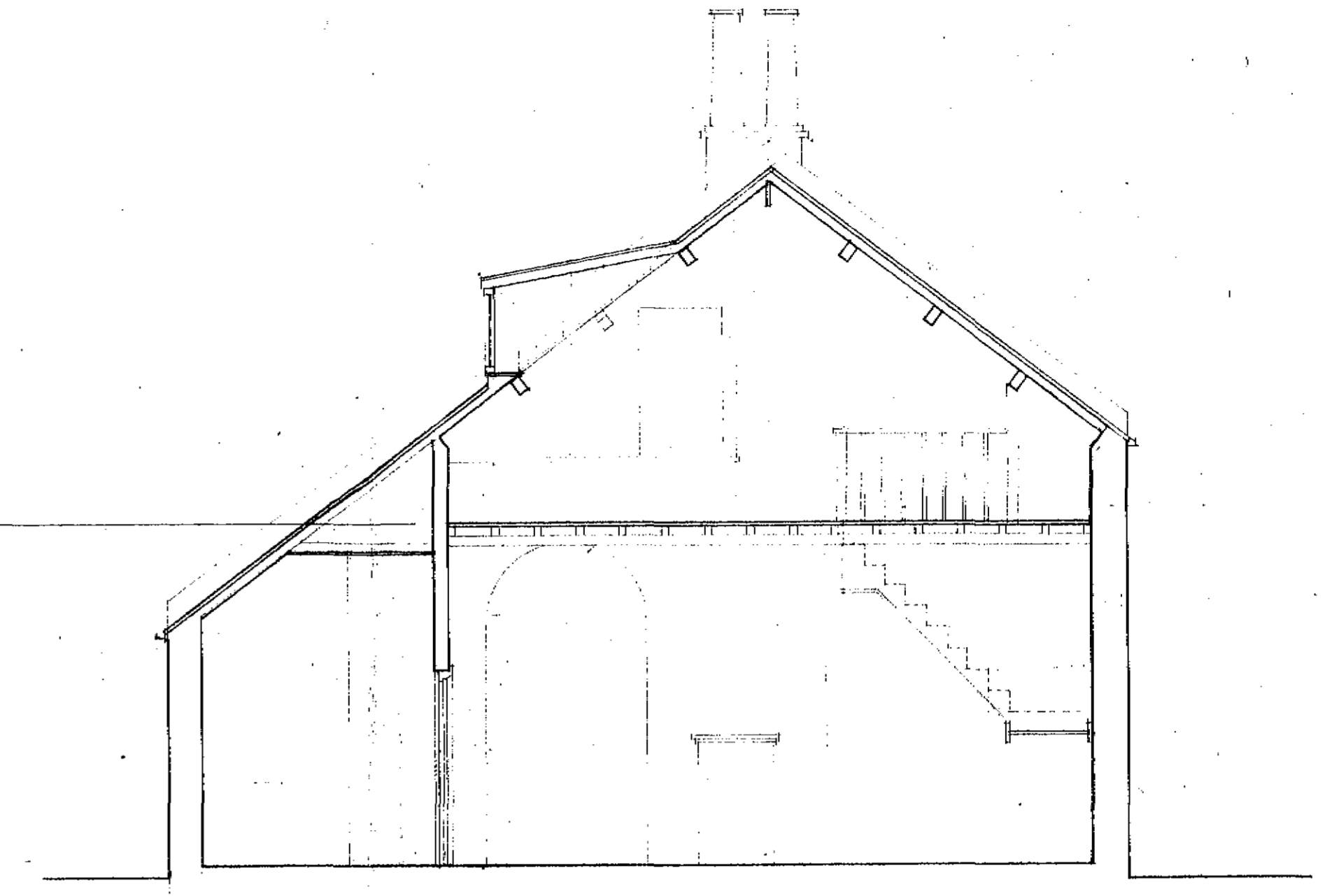


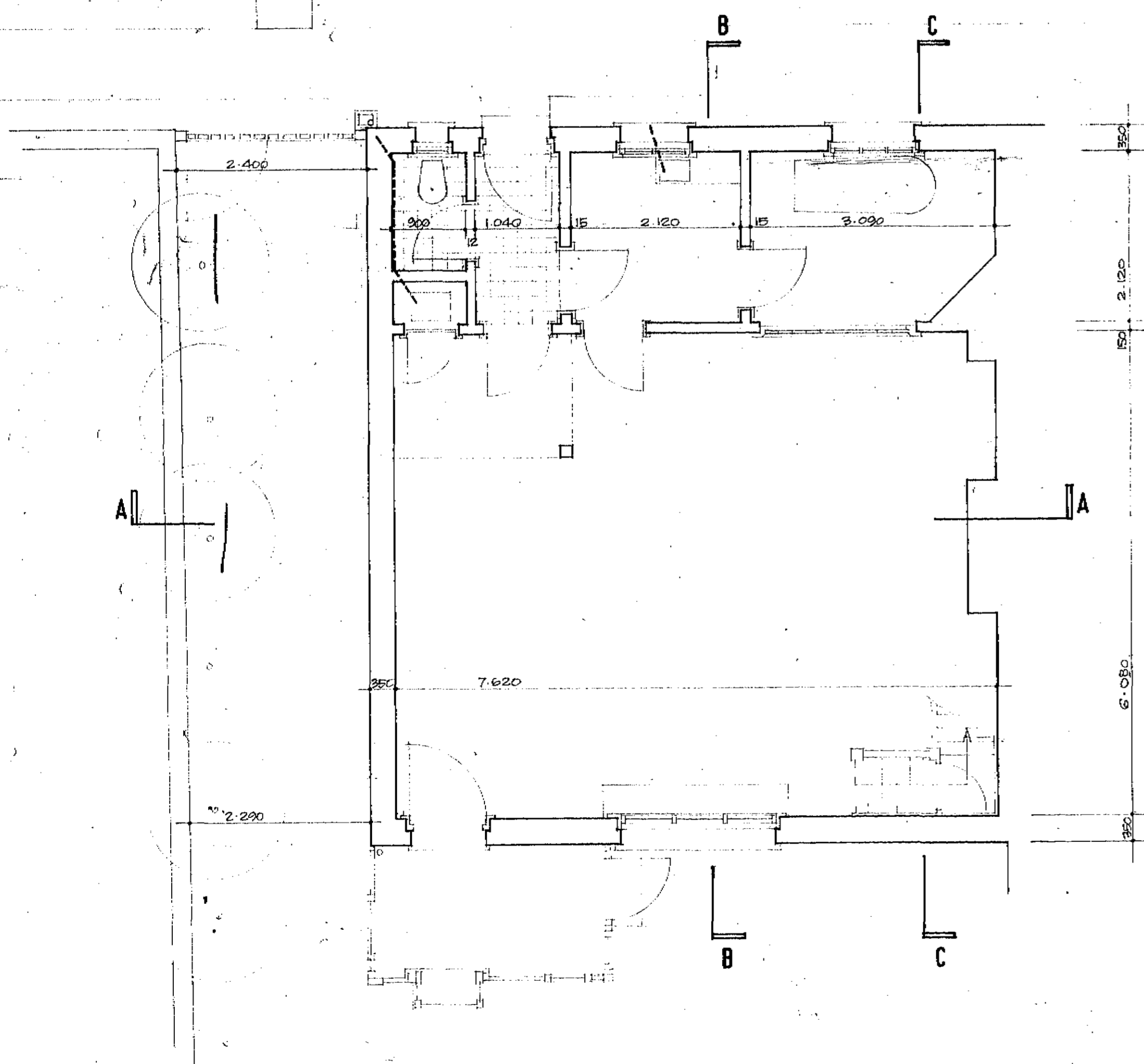
SECTION AA



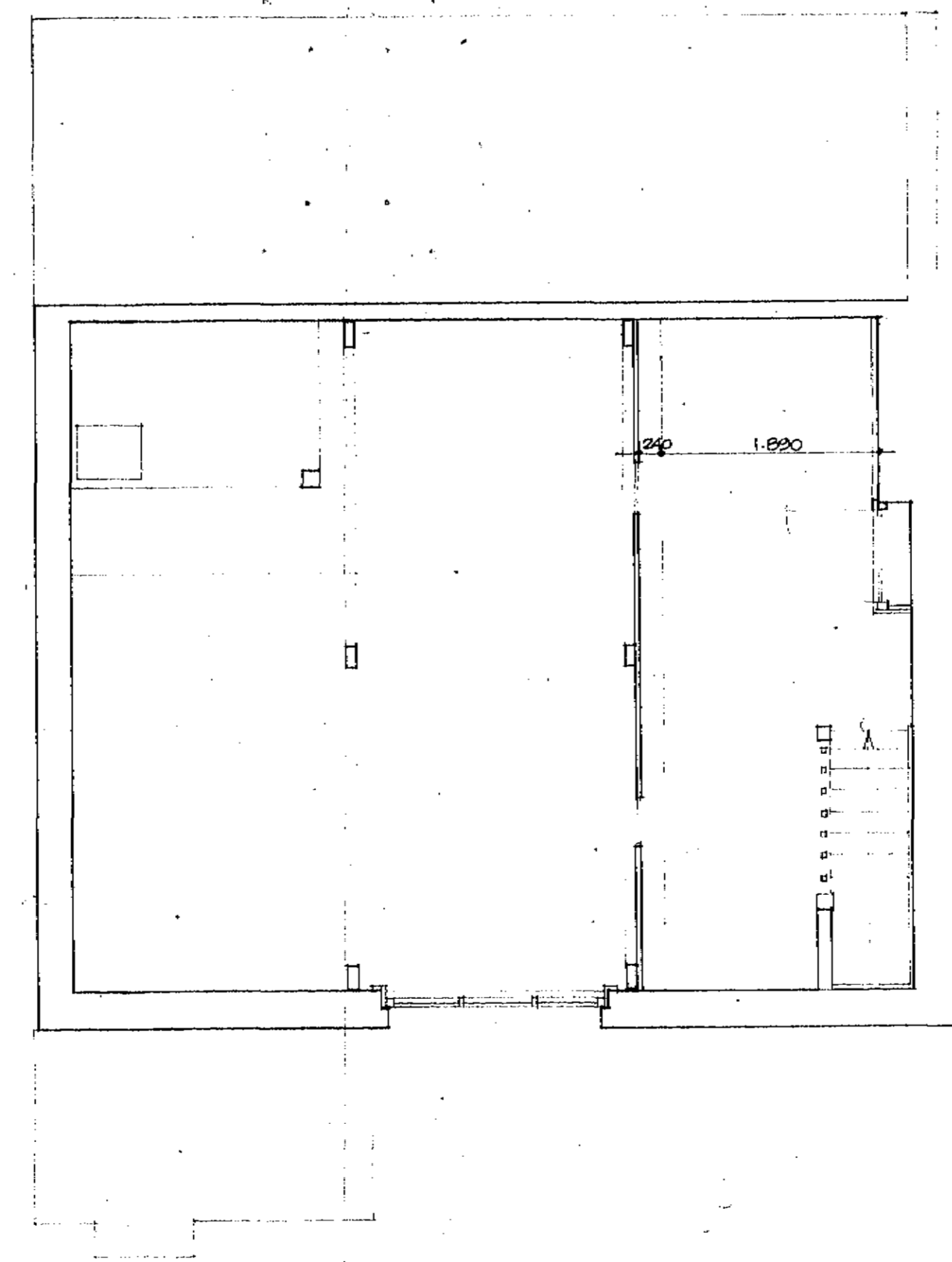
SECTION BB



SECTION CC



GROUND PLAN



GALLERY PLAN

LONDON BOROUGH OF CAMDEN
 PLANS APPROVED
 -DISAPPROVED
 - 3 MAR 1971
 ON BEHALF OF THE COUNCIL

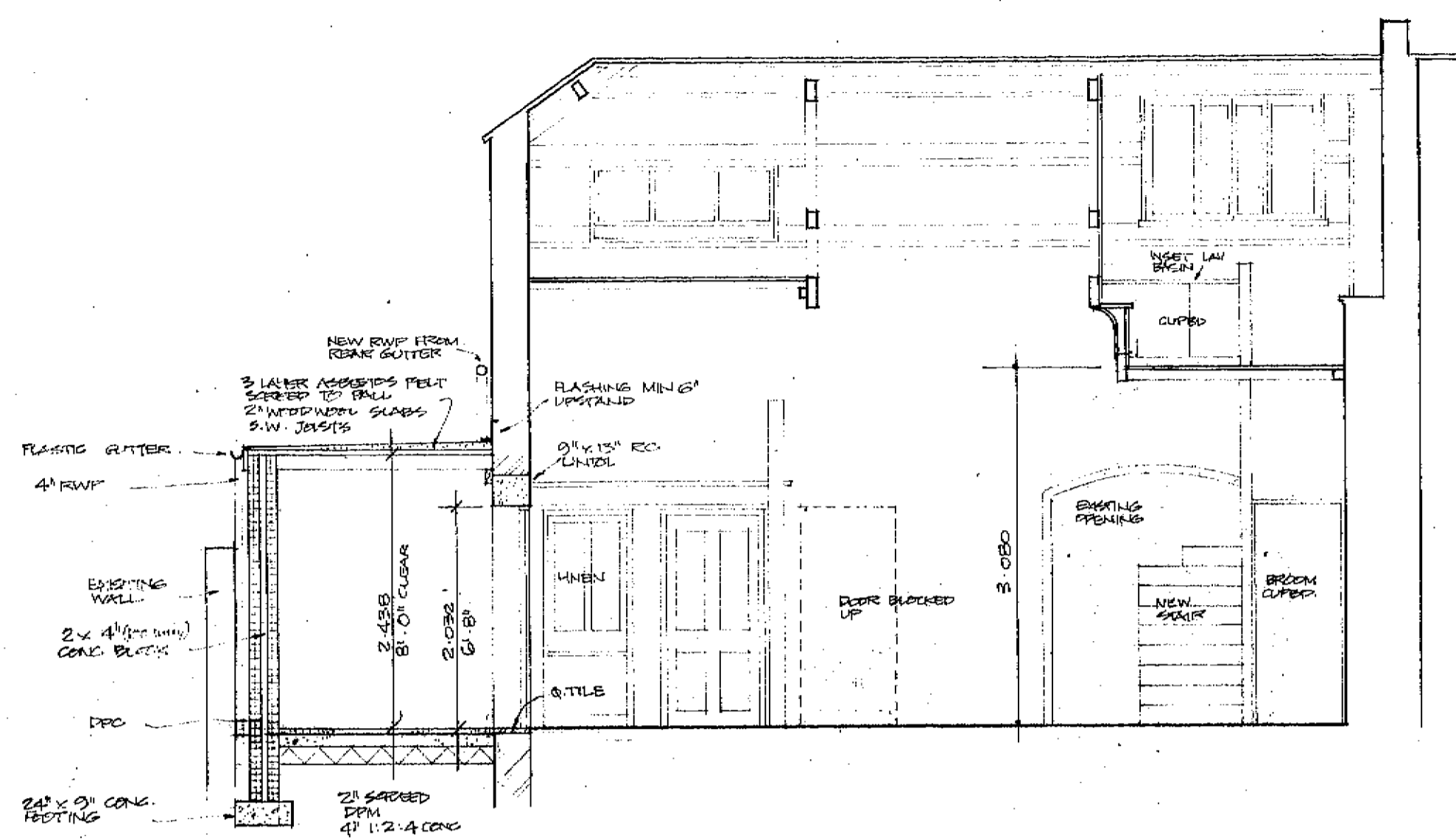
F9/10/23/1004

6.70

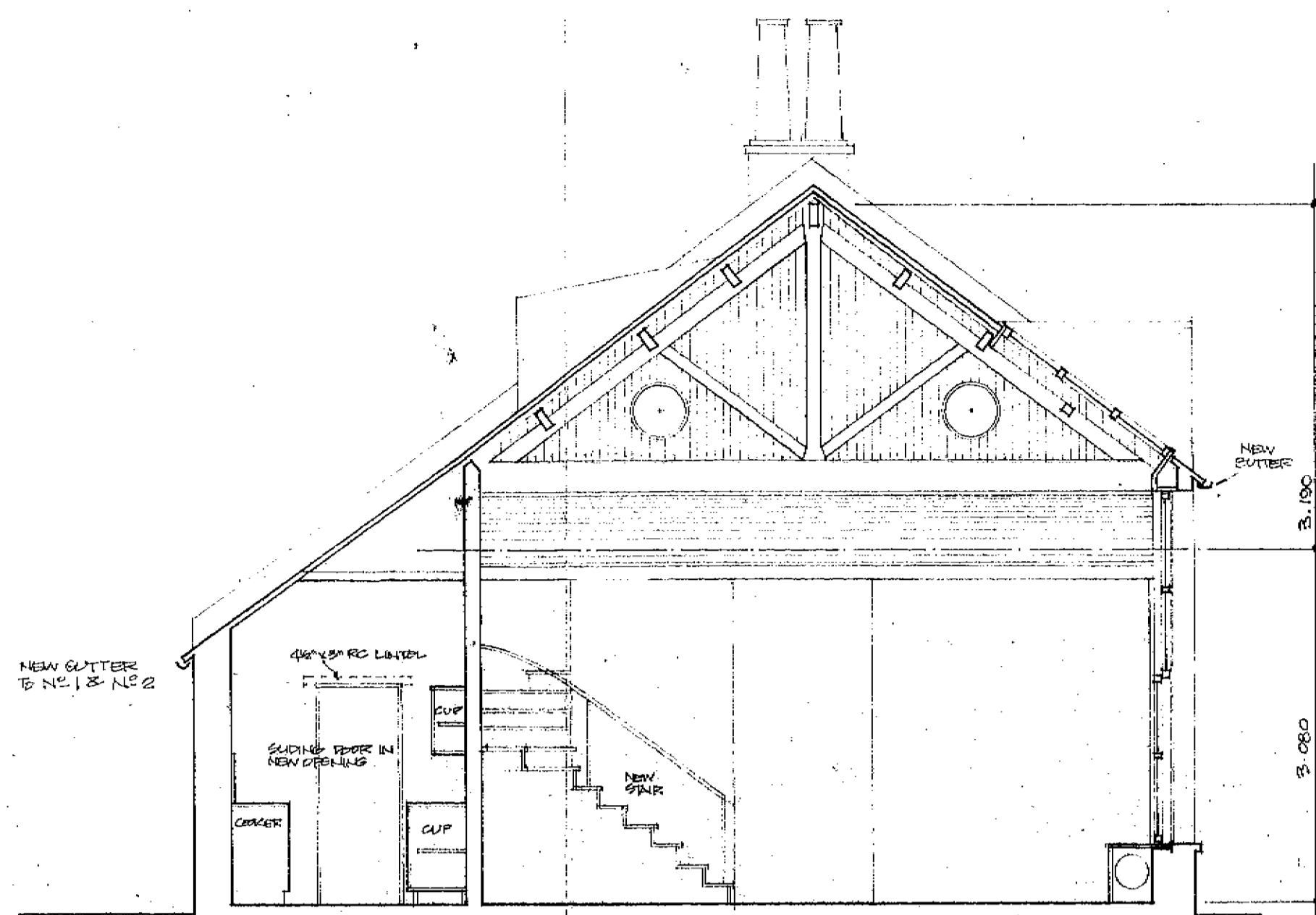
KEITH MANNERS ARIBA ARCHITECTS
 26, REBENTS PARK ROAD
 LONDON NW1

1 MALL STUDIOS TASKER ROAD LONDON NW3

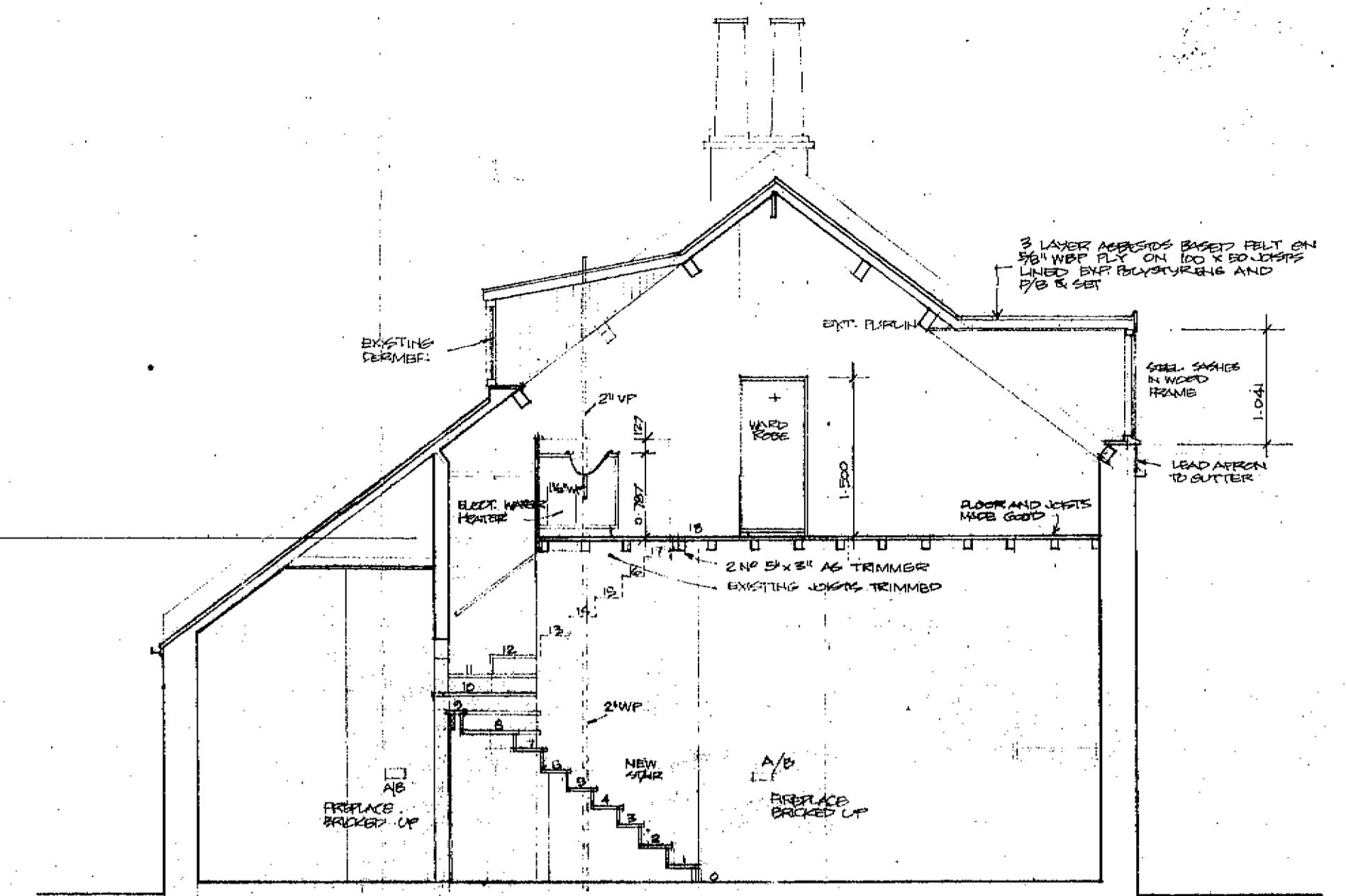
Existing building
 Scale 1:50 metric



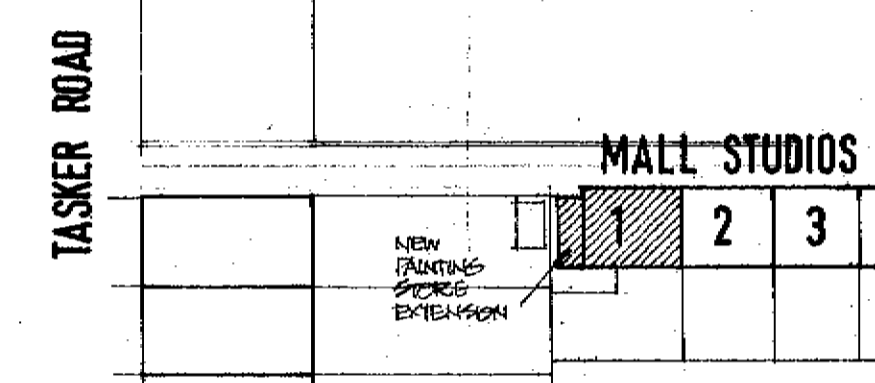
SECTION AA



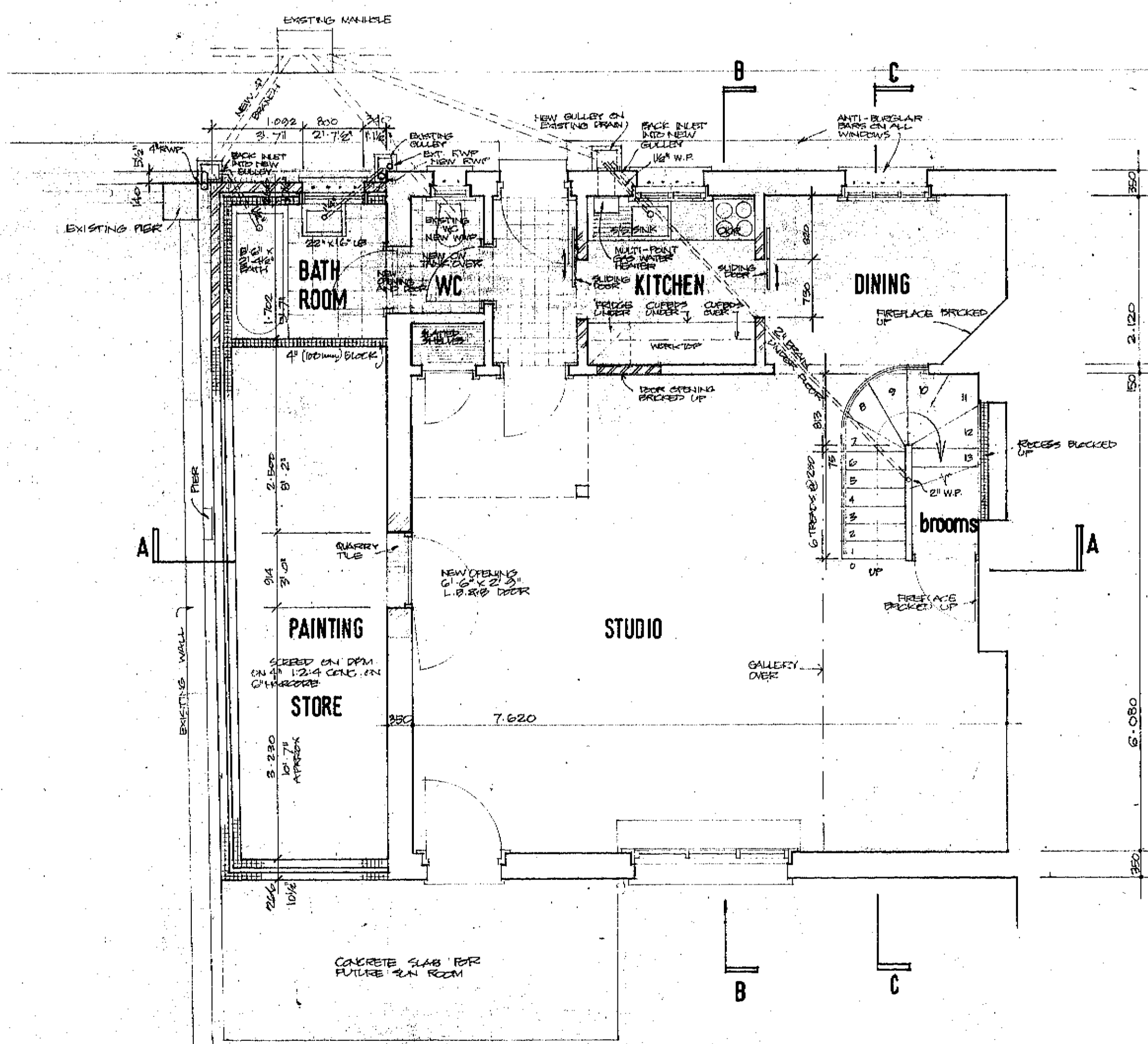
SECTION BB



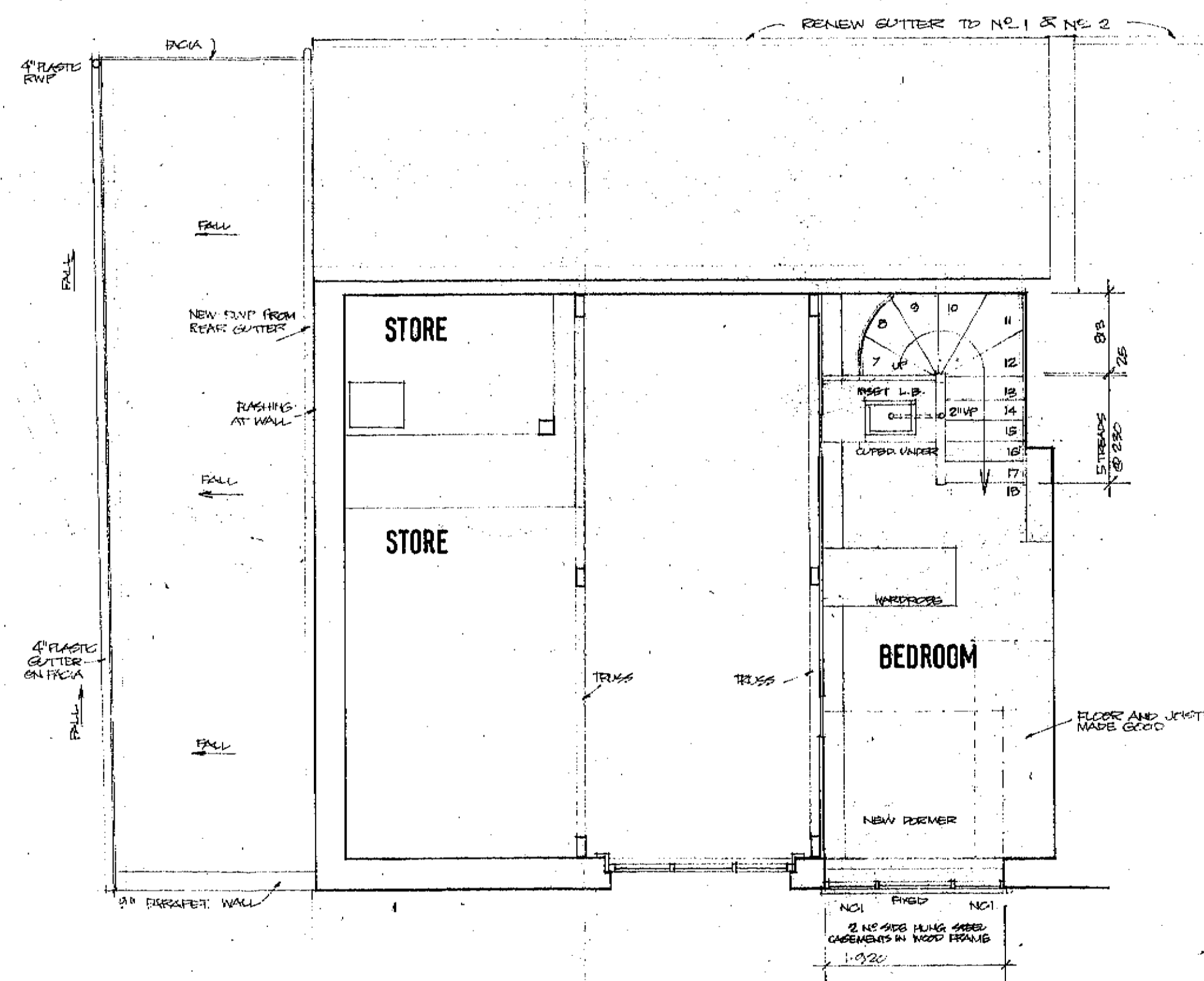
SECTION CC



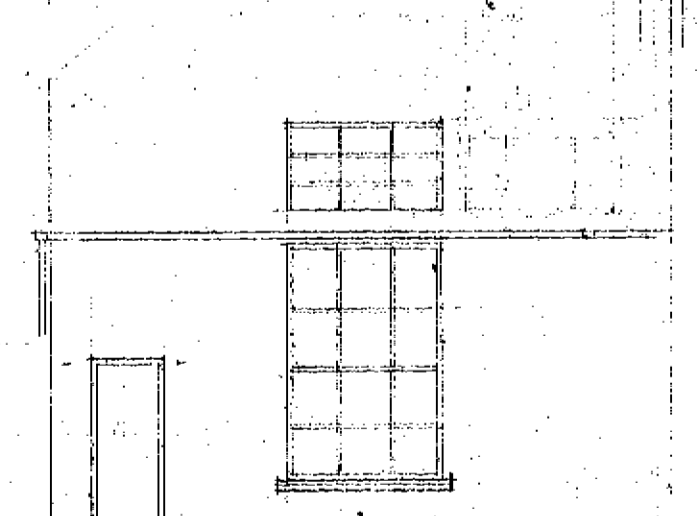
LOCATION PLAN - NTS



GROUND PLAN



GALLERY PLAN



JTP/F9/10/23/0264

6.70

KEITH MANNERS ARIBA ARCHITECT
26, REGENTS PARK ROAD
LONDON NW1

1 MALL STUDIOS TASKER ROAD LONDON NW3

PROPOSED CONVERSION AND EXTENSION
Scale 1:50 metric