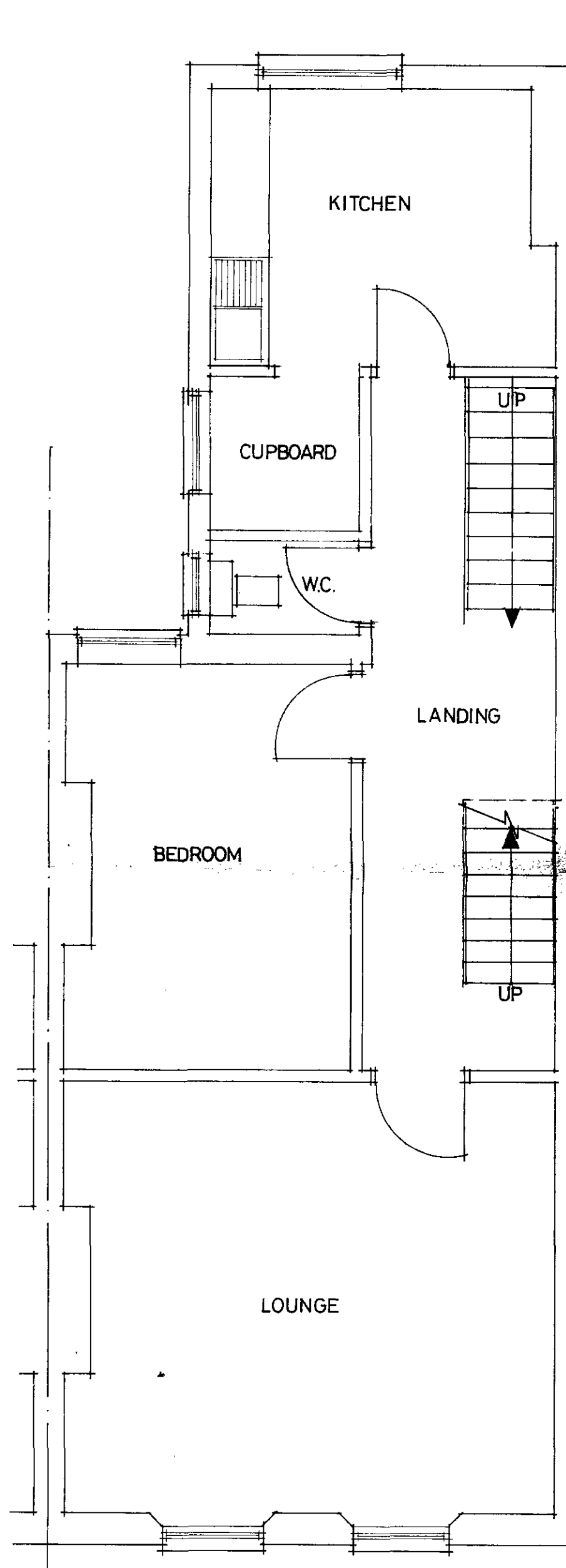
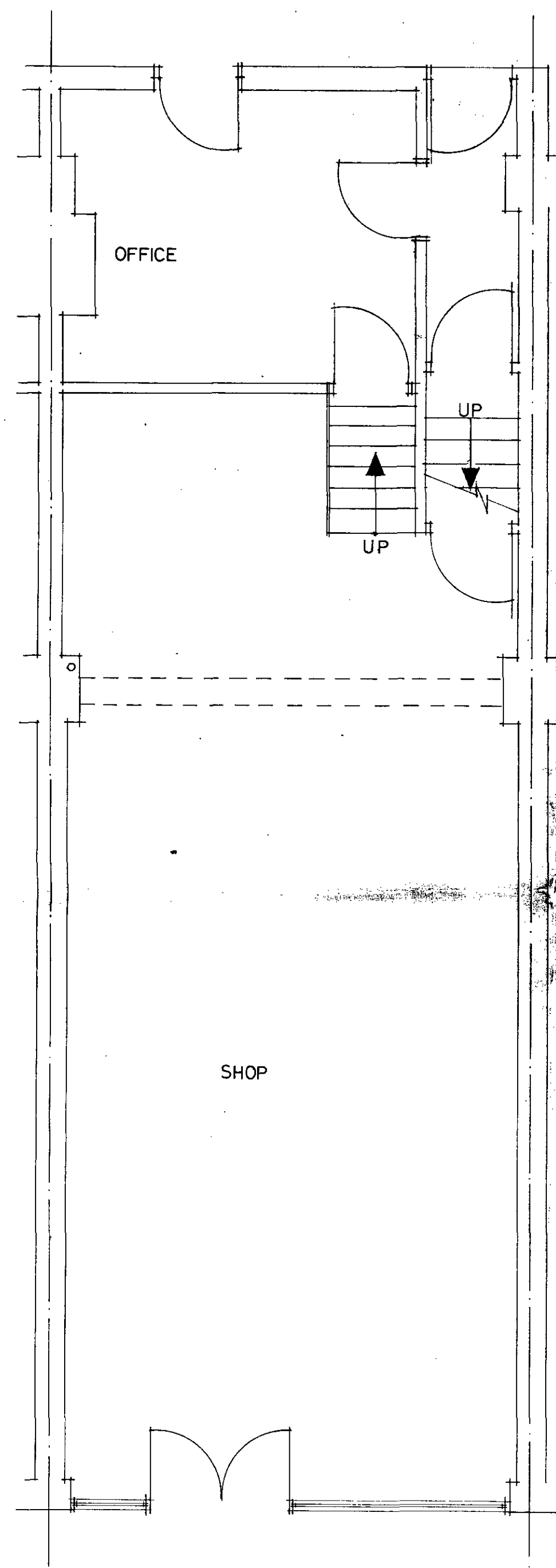


SECOND FLOOR PLAN



FIRST FLOOR PLAN



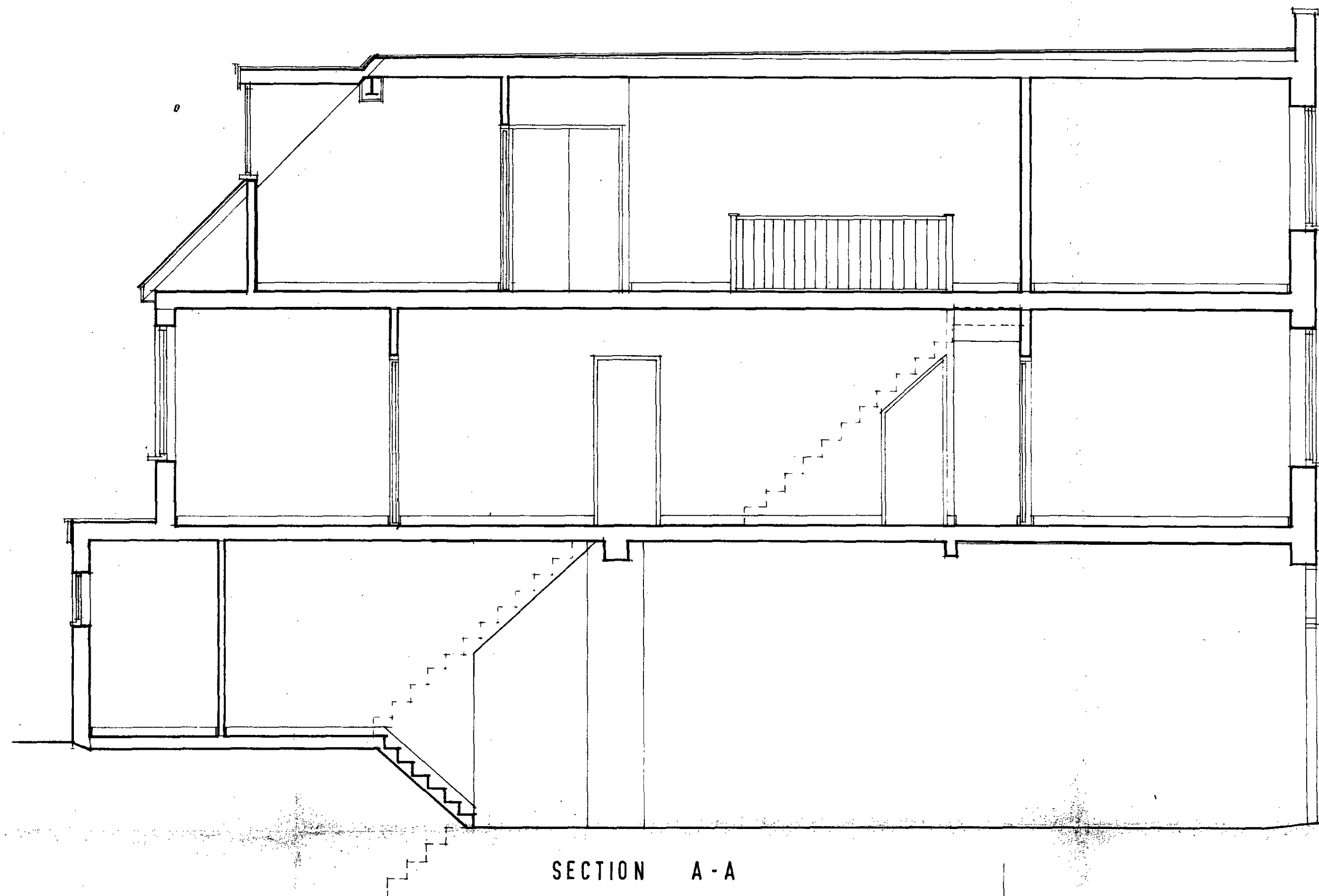
GROUND FLOOR PLAN

LONDON BOROUGH OF CAMDEN
TOWN AND COUNTRY PLANNING ACTS
17 JAN 1990
PLANS NOT APPROVED
ON BEHALF OF THE COUNCIL

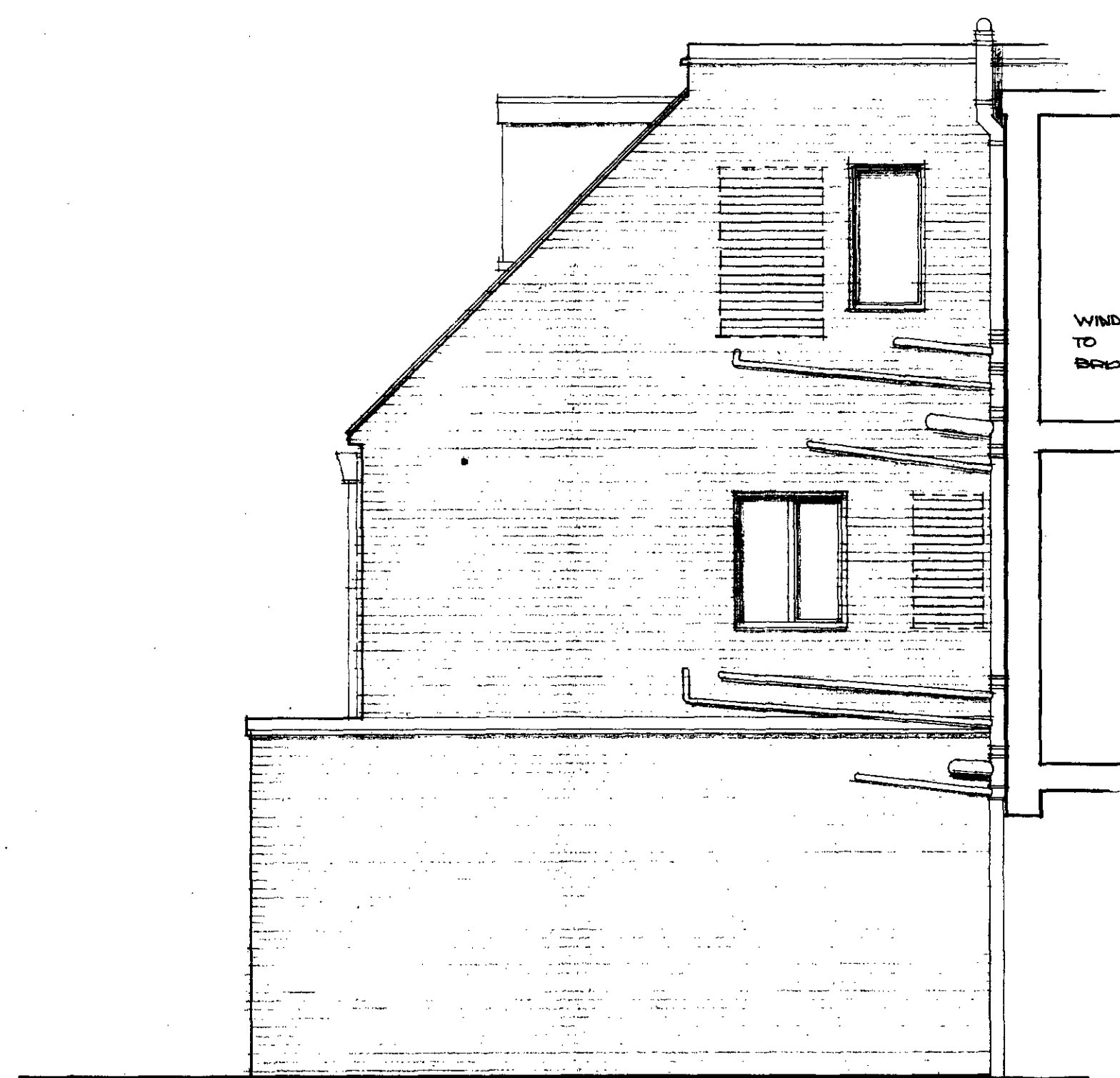
EXISTING PLANS AT No276,
WEST END LANE,
WEST HAMPSTEAD N.W.6.

scale 1/4" 1ft. date JULIE 85
DWG NO 2077/3 TP8905740

AUSTIN VERNON ASSOCIATES
ARCHITECTS & PLANNERS
17 DENBIGH STREET WESTMINSTER
LONDON SW1V 2HH
Tel 01 828 3111



SECTION A-A



PART SIDE ELEVATION

WINDOW OPENINGS SHOWN DOTTED
TO BE BRICKED UP IN FACING
BRICKWORK TO MATCH EXISTING.



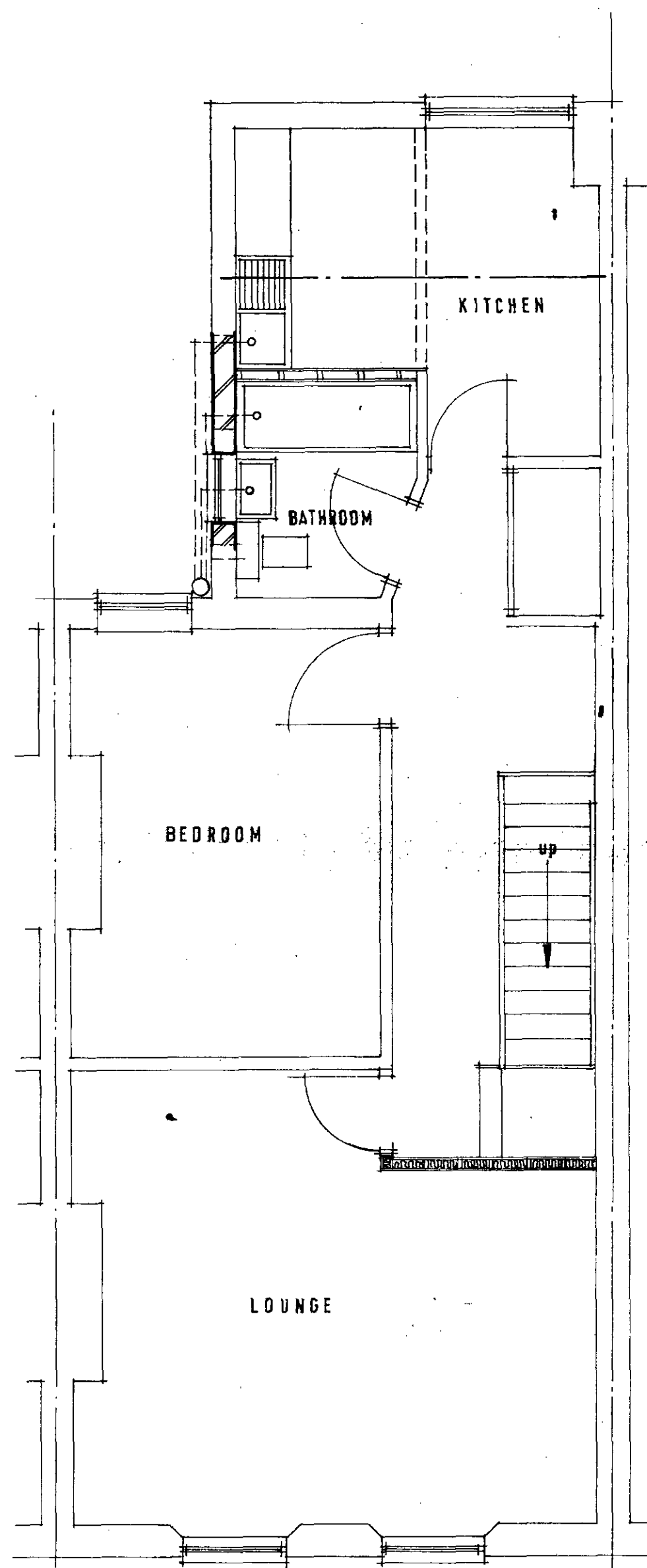
REAR ELEVATION

LONDON BOROUGH OF CAMDEN
TOWN AND COUNTRY PLANNING ACTS
17 JAN 1990
PLANS NOT APPROVED
ON BEHALF OF THE COUNCIL

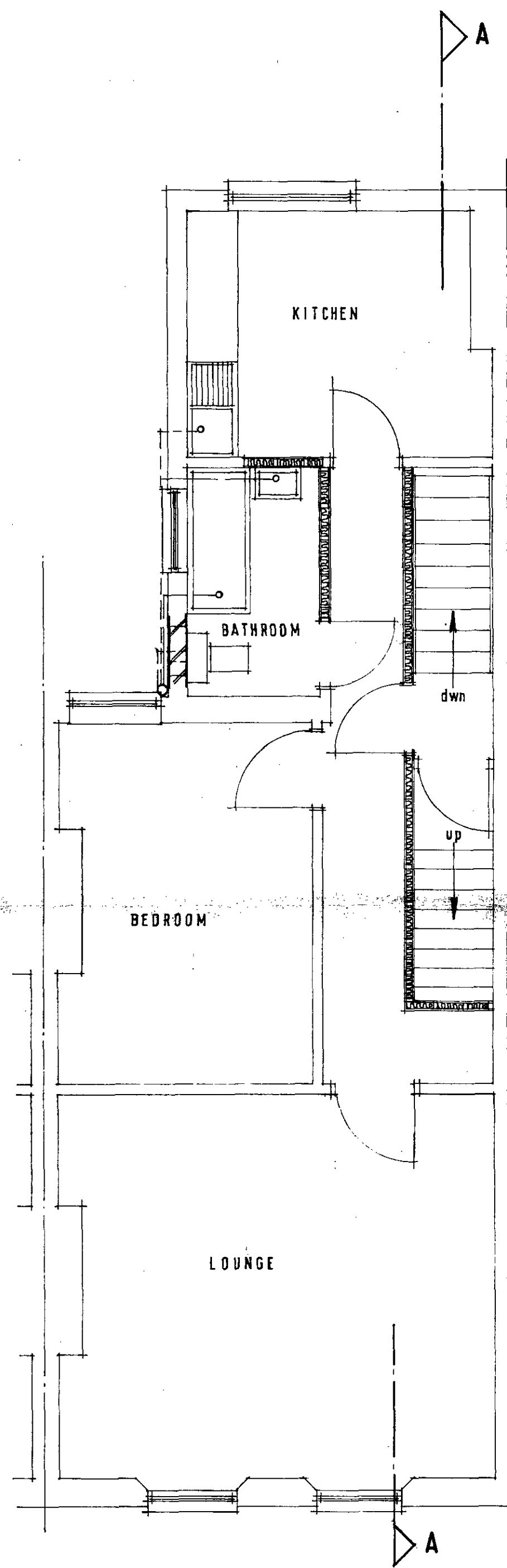
TP 89 05 740

PROPOSED ALTERATIONS TO FORM TWO SELF-
CONTAINED FLATS ABOVE SHOP AT
NO. 276 WEST END LANE WEST HAMPSTEAD NW6.
SCALE 1/4" = 1'
DRAWING NO. 2077-2

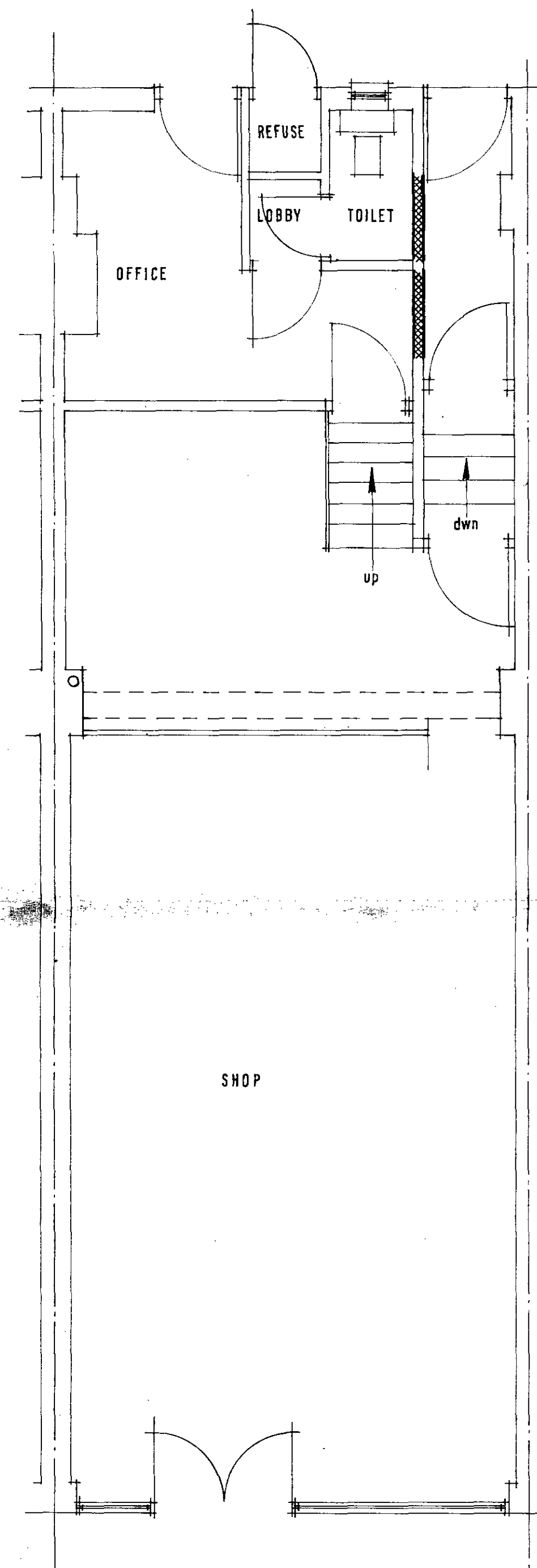
AUSTIN VERNON ASSOCIATES
ARCHITECTS & PLANNERS
17 DENBIGH STREET WESTMINSTER
LONDON SW1V 2HH
Tel 01 828 3111



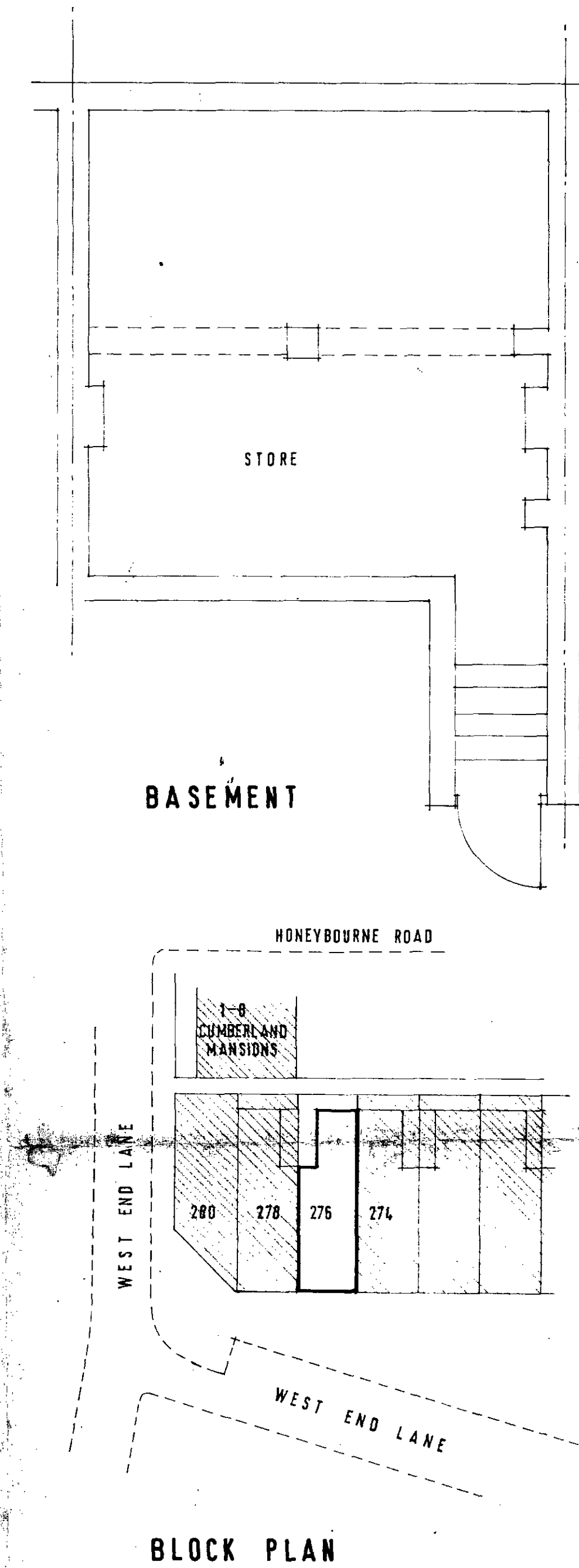
SECOND FLOOR PLAN



FIRST FLOOR PLAN



GROUND FLOOR PLAN



BLOCK PLAN

LONDON BOROUGH OF CAMDEN
TOWN AND COUNTRY PLANNING ACTS
17 JAN 1990
PLANS NOT APPROVED
ON BEHALF OF THE COUNCIL

PROPOSED ALTERATIONS TO FORM TWO
SELF-CONTAINED FLATS ABOVE SHOP
AT No. 276, WEST END LANE,
WEST HAMPSTEAD N.W.6.

scale 1/4" = 1 ft. drawing no. 2077-1

TP8905740

AUSTIN VERNON ASSOCIATES
ARCHITECTS & PLANNERS
17 DENBIGH STREET WESTMINSTER
LONDON SW1V 2HH
Tel 01 828 3111