

LONDON BOROUGH OF CAMDEN
TOWN AND COUNTRY PLANNING ACTS
25 APR 1990
PLANS APPROVED
ON BEHALF OF THE COUNCIL

TP 8905071

Awford-Haye Partnership

1 Perren Street, London NW5 3ED 01-267-7564

project

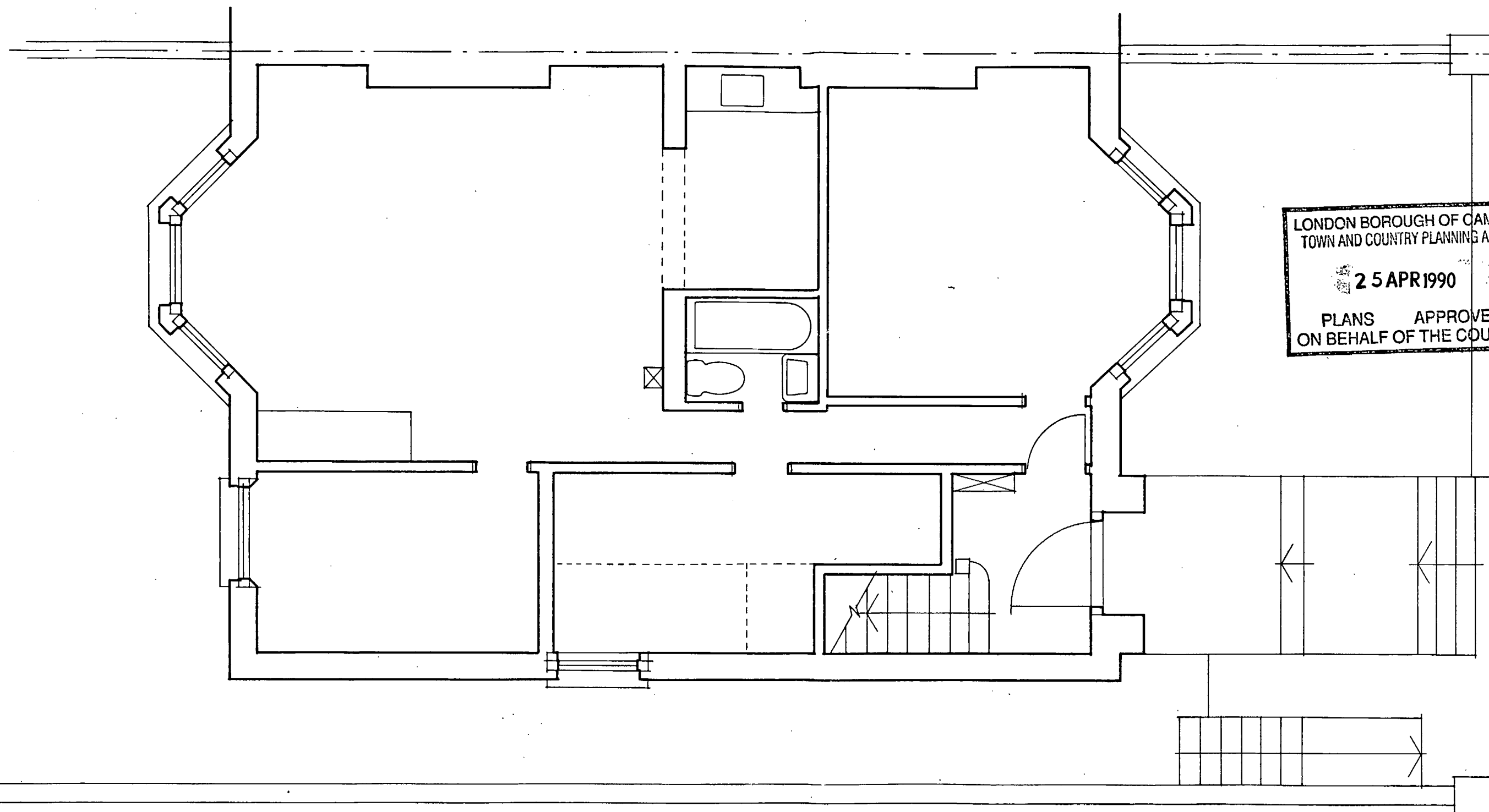
7 TANZA ROAD NW3

drawing LOWER GROUND FLOOR
PLAN - AS EXISTING

scale 1:50 date NOV 88 drw by RF

drawing number 1749 - 01 revision

LONDON BOROUGH OF CAMDEN
PLANNING AND TRANSPORT
DEPARTMENT
27 JAN 1989
RECEIVED



LONDON BOROUGH OF CAMDEN
TOWN AND COUNTRY PLANNING ACTS
25 APR 1990
PLANS APPROVED
ON BEHALF OF THE COUNCIL

LONDON BOROUGH OF CAMDEN
PLANNING AND TRANSPORT
DEPARTMENT
27 JAN 1989
RECEIVED

Awford-Haye Partnership

1 Perren Street, London NW5 3ED 01-267-7564

project

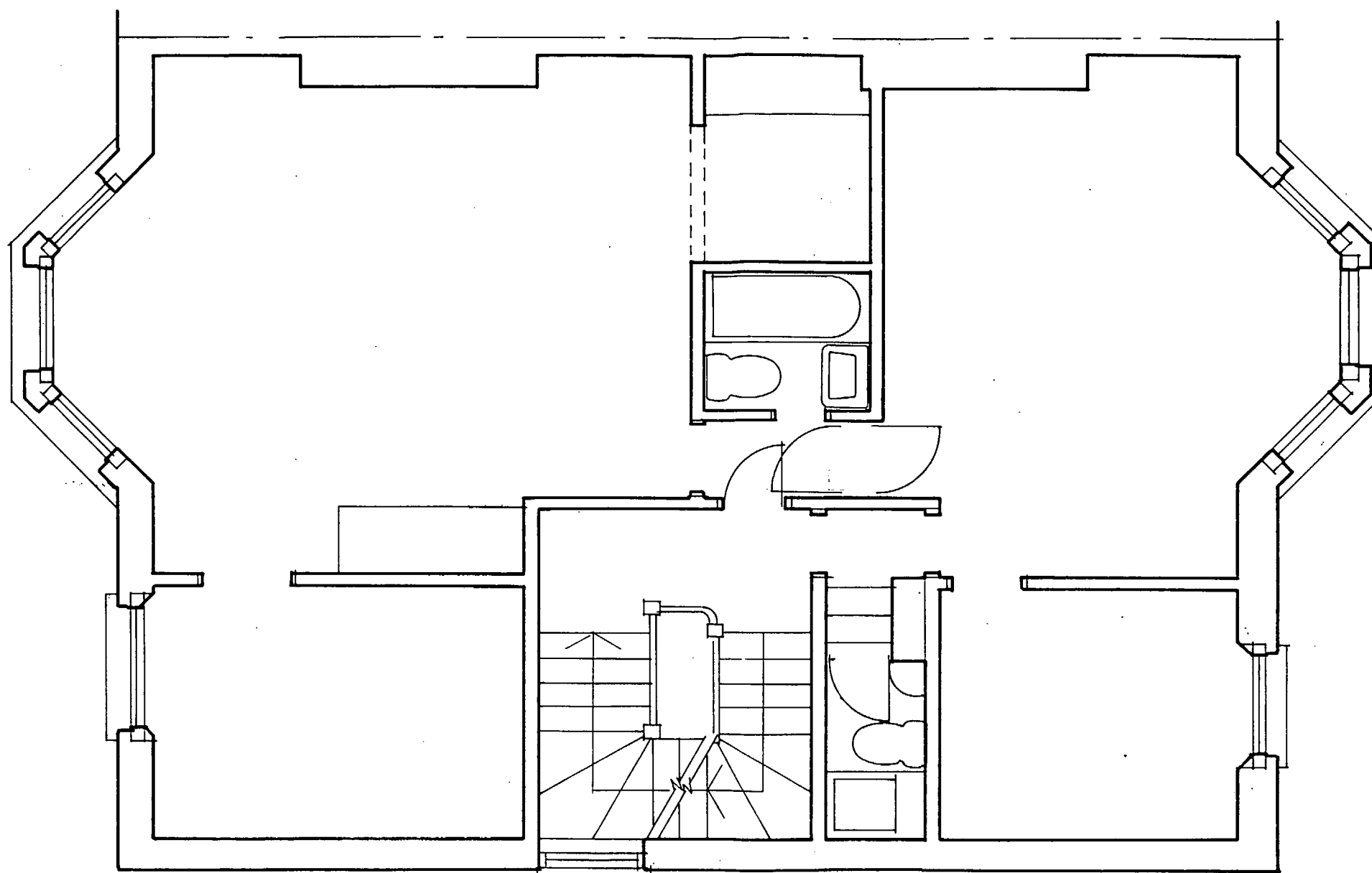
7 TANZA ROAD, NW3

drawing UPPER GROUND FLOOR
PLAN - AS EXISTING

scale 1:50 date NOV 88 drw by RF

drawing number 1749 - 02 revision

TP 8905071



LONDON BOROUGH OF CAMDEN
TOWN AND COUNTRY PLANNING ACTS

25 APR 1990

PLANS APPROVED
ON BEHALF OF THE COUNCIL

LONDON BOROUGH OF CAMDEN
PLANNING AND TRANSPORT
DEPARTMENT
27 JAN 1989
RECEIVED

Awford-Haye Partnership

1 Perren Street, London NW5 3ED 01-267-7564

project

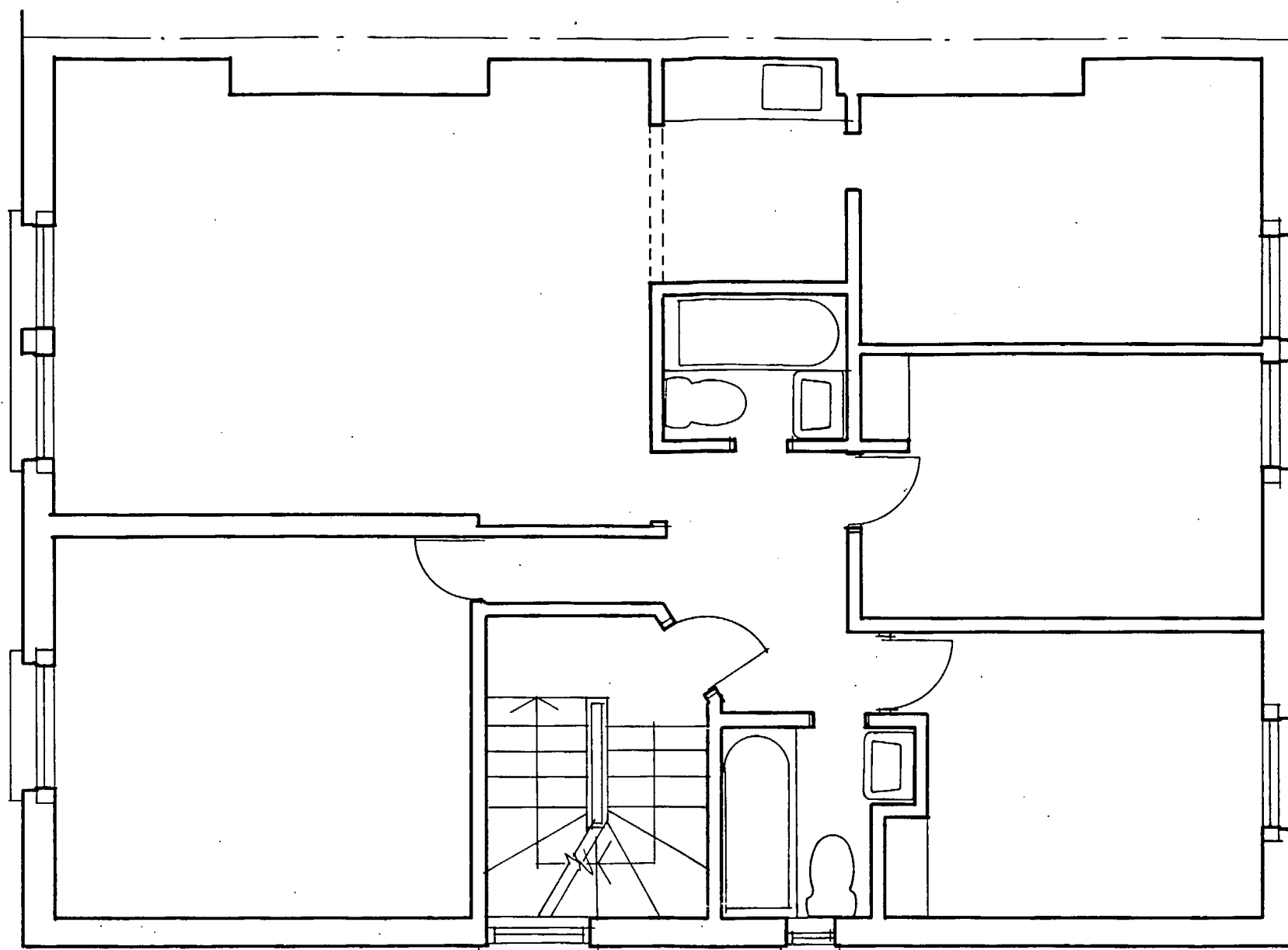
7 TANZA ROAD, NW3

drawing FIRST FLOOR PLAN
AS EXISTING

scale 1:50 date NOV 88 drw by RF

drawing number 1749-03 revision

TP 8905071



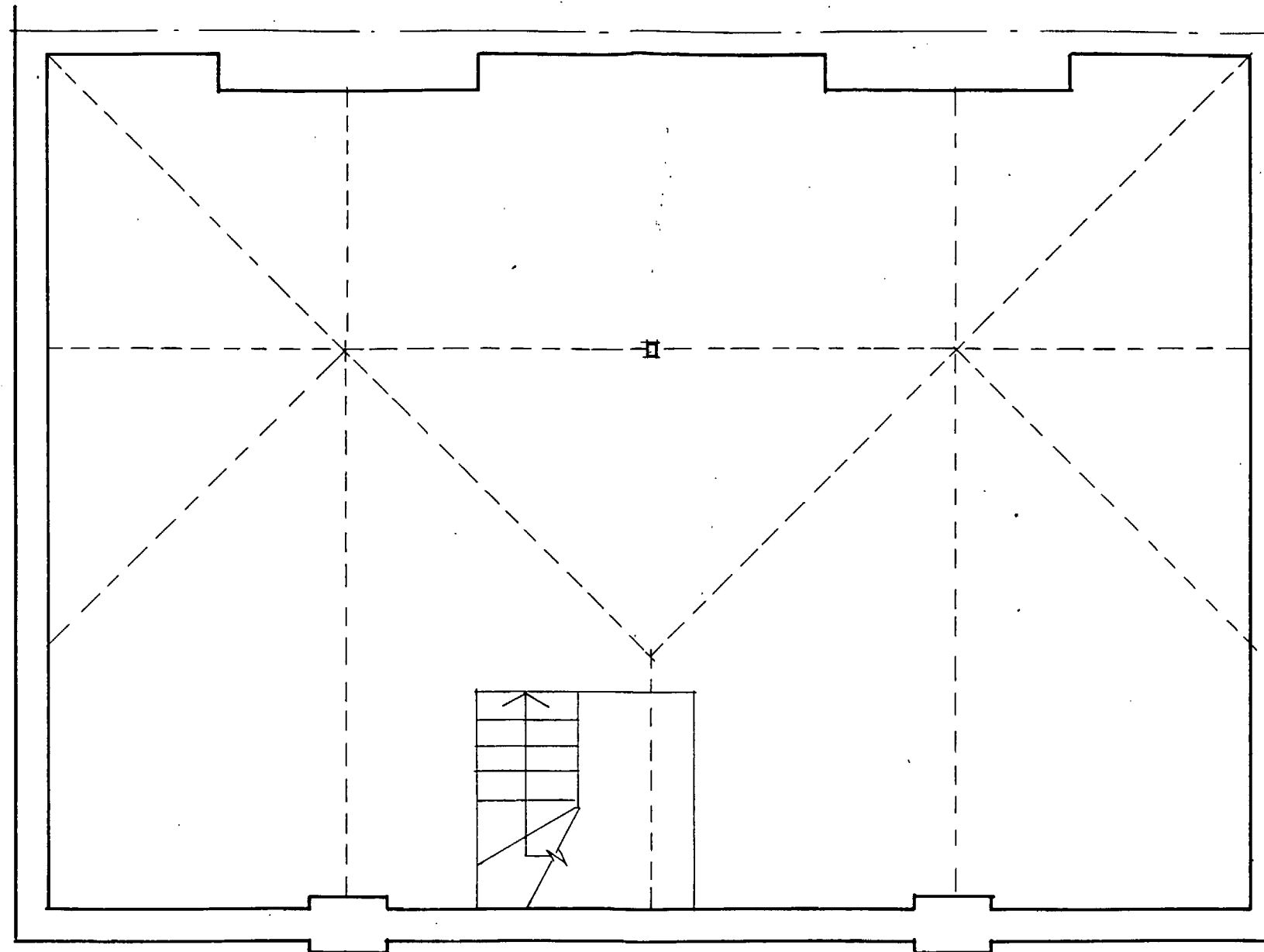
LONDON BOROUGH OF CAMDEN
TOWN AND COUNTRY PLANNING ACTS
25 APR 1990
PLANS APPROVED
ON BEHALF OF THE COUNCIL

LONDON BOROUGH OF CAMDEN
PLANNING AND TRANSPORT
DEPARTMENT
27 JAN 1989
RECEIVED

Awford-Haye Partnership
1 Perren Street, London NW5 3ED 01-267-7564
project
7 TANZA ROAD, NW3

drawing SECOND FLOOR PLAN
AS EXISTING
scale 1:50 date NOV 88 drw by R F
drawing number 1749-04 revision

TP 8905078-1



LONDON BOROUGH OF CAMDEN
TOWN AND COUNTRY PLANNING ACTS
25 APR 1990
PLANS APPROVED
ON BEHALF OF THE COUNCIL

LONDON BOROUGH OF CAMDEN
PLANNING AND TRANSPORT
DEPARTMENT
27 JAN 1989
RECEIVED

Awford-Haye Partnership

1 Perren Street, London NW5 3ED 01-267-7564

project

7 TANZA ROAD, NW3

drawing THIRD FLOOR PLAN
AS EXISTING

scale 1:50 date NOV 88 drw by RF

drawing number 1749-05 revision

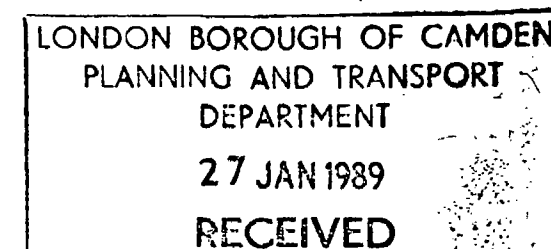
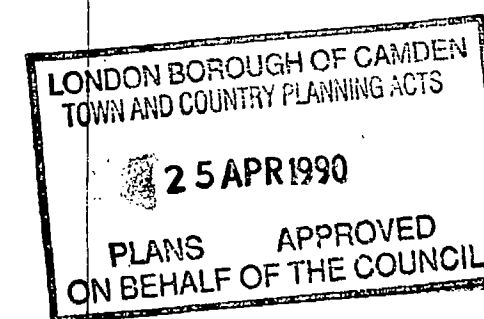
TP 8905071



FRONT ELEVATION



REAR ELEVATION



Awford-Haye Partnership

1 Perren Street, London NW5 3ED 01-267-7564

project

7 TANZA ROAD, NW3

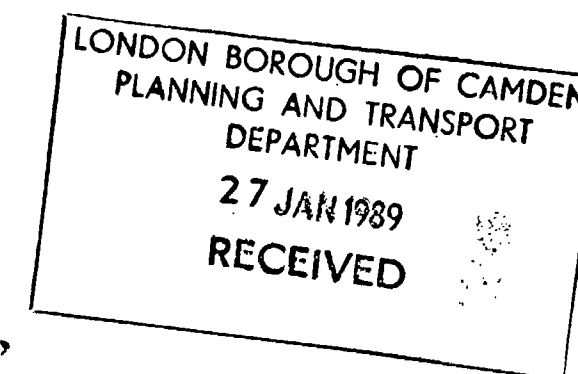
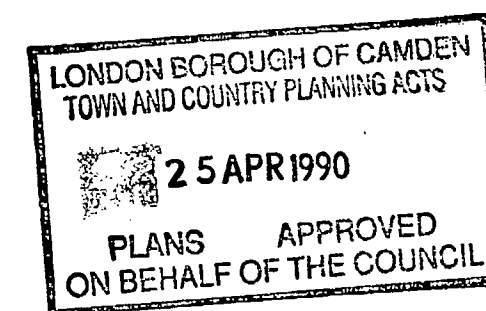
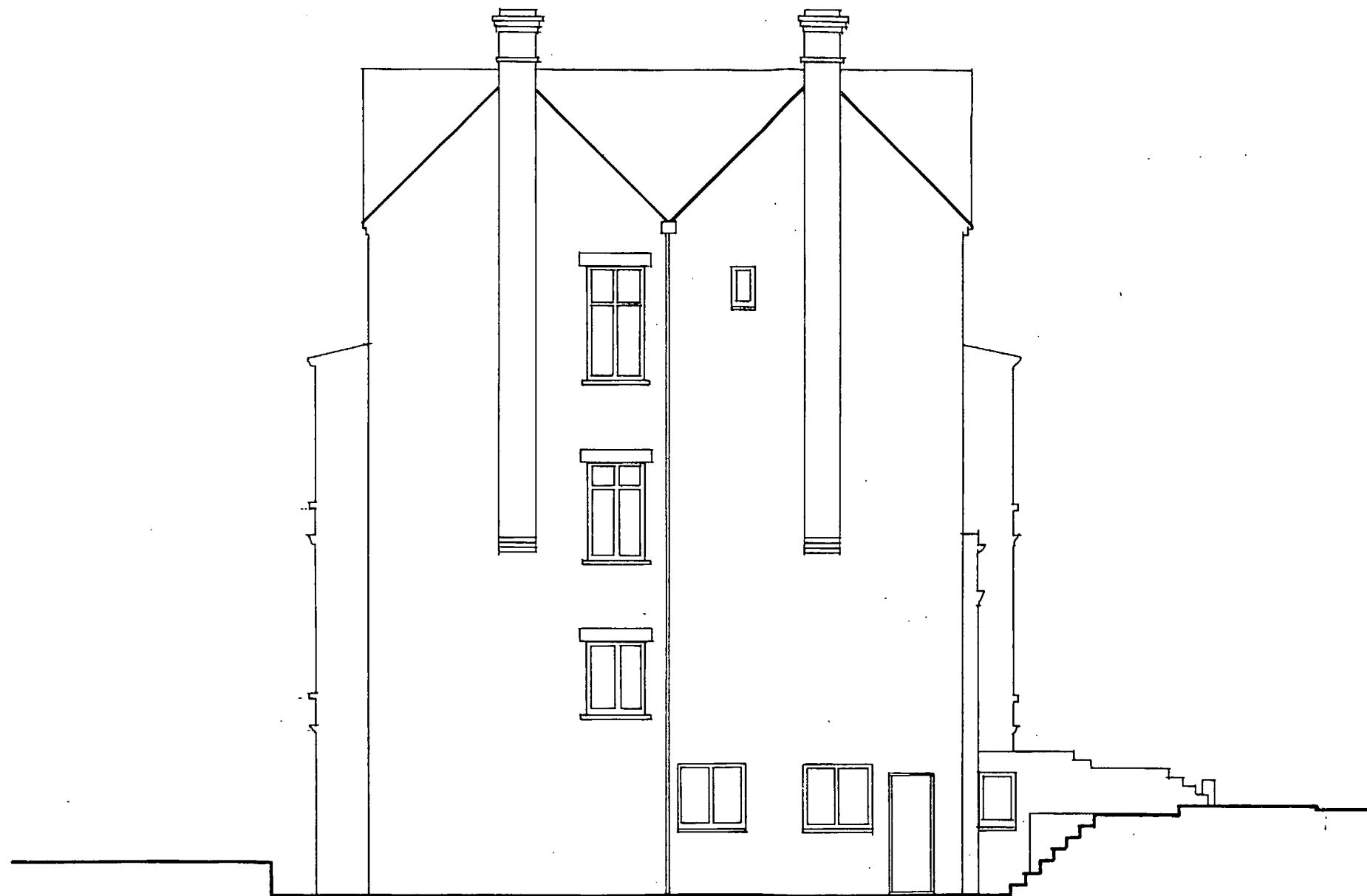
drawing FRONT & REAR ELEVATIONS
AS EXISTING

scale 1:100 date NOV 88 drw by RF

drawing number revision

1749-06

TP 8905071



Awford - Haye Partnership

1 Perren Street, London NW5 3ED 01-267-7564

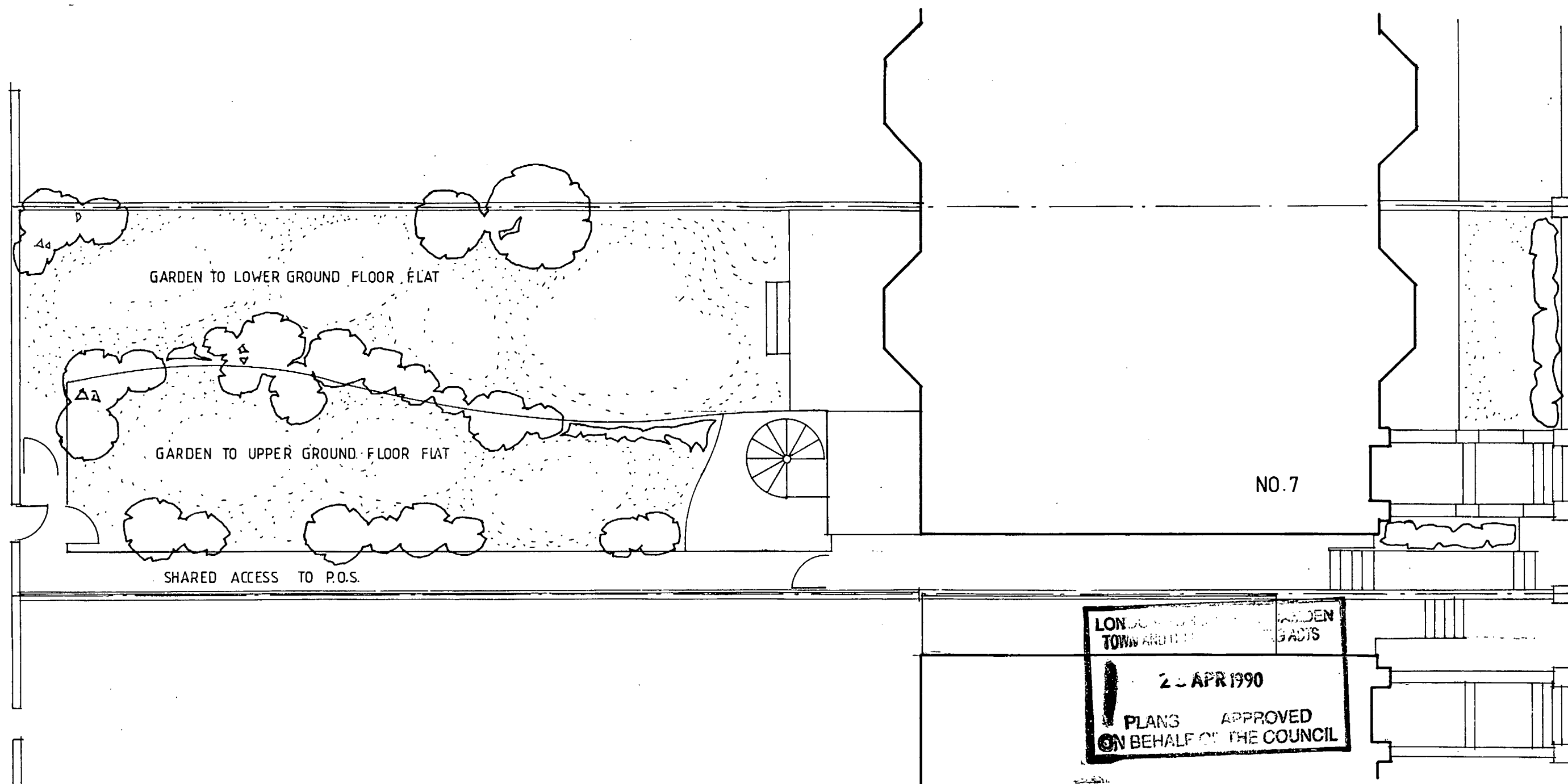
project

7 TANZA ROAD, NW3

drawing SIDE ELEVATION
AS EXISTING

scale 1: 100 date JAN 89 drw by RF

drawing number 1749 - 07 revision



LONDON BOROUGH OF CAMDEN
TOWN AND COUNCIL
22 APR 1990
PLANS APPROVED
ON BEHALF OF THE COUNCIL

LONDON BOROUGH OF CAMDEN
PLANNING AND TRANSPORT
DEPARTMENT
27 JAN 1989
RECEIVED

Awford-Haye Partnership

1 Perren Street, London NW5 3ED 01-267-7564

project

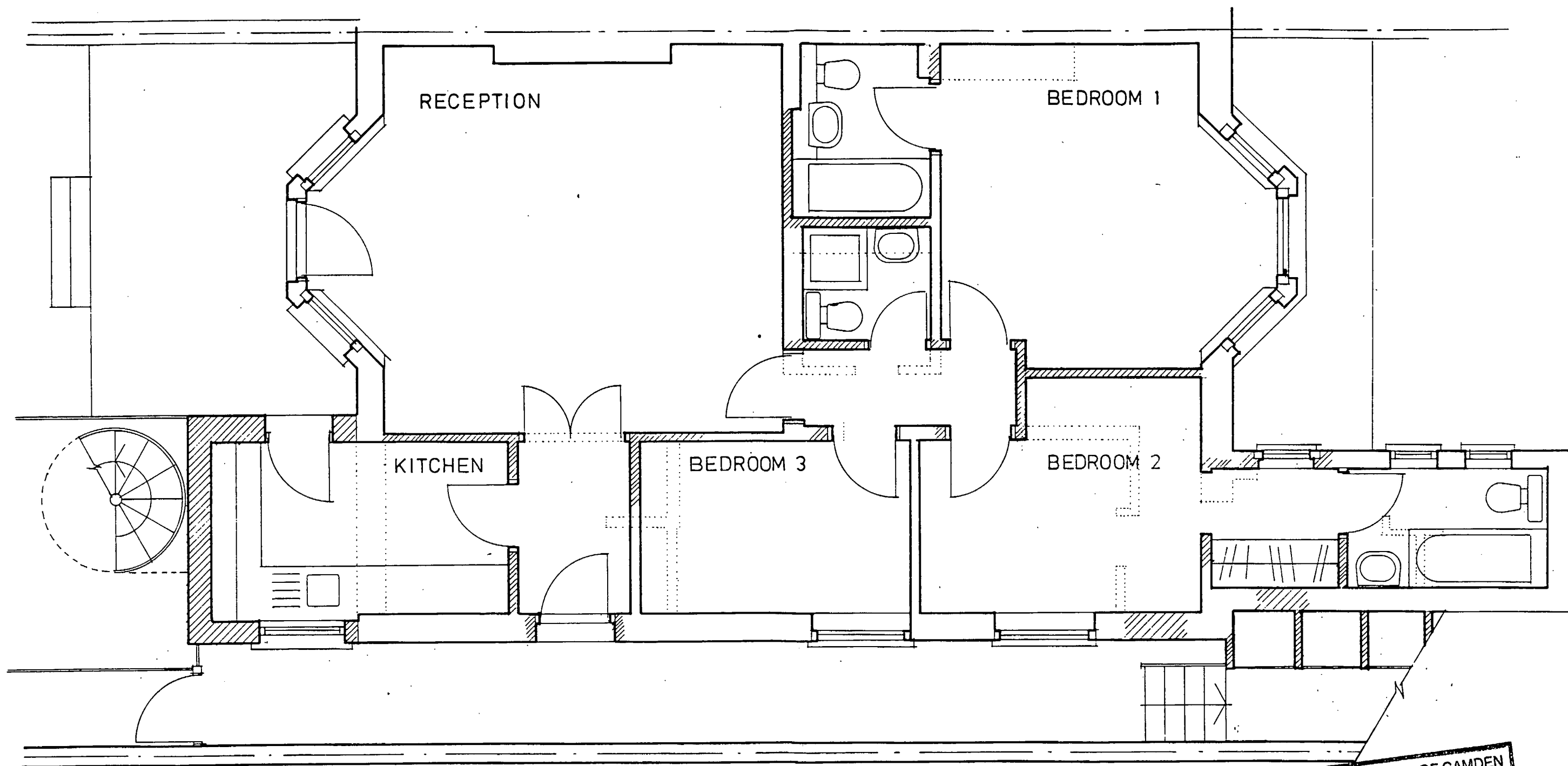
7 TANZA ROAD, NW3

drawing SITE PLAN
AS PROPOSED

scale 1: 100 date JAN 89 drw by RF

drawing number revision

1749 - 08



Awford-Haye Partnership

1 Perren Street, London NW5 3ED 01-267-7564

project

7 TANZA ROAD, NW3

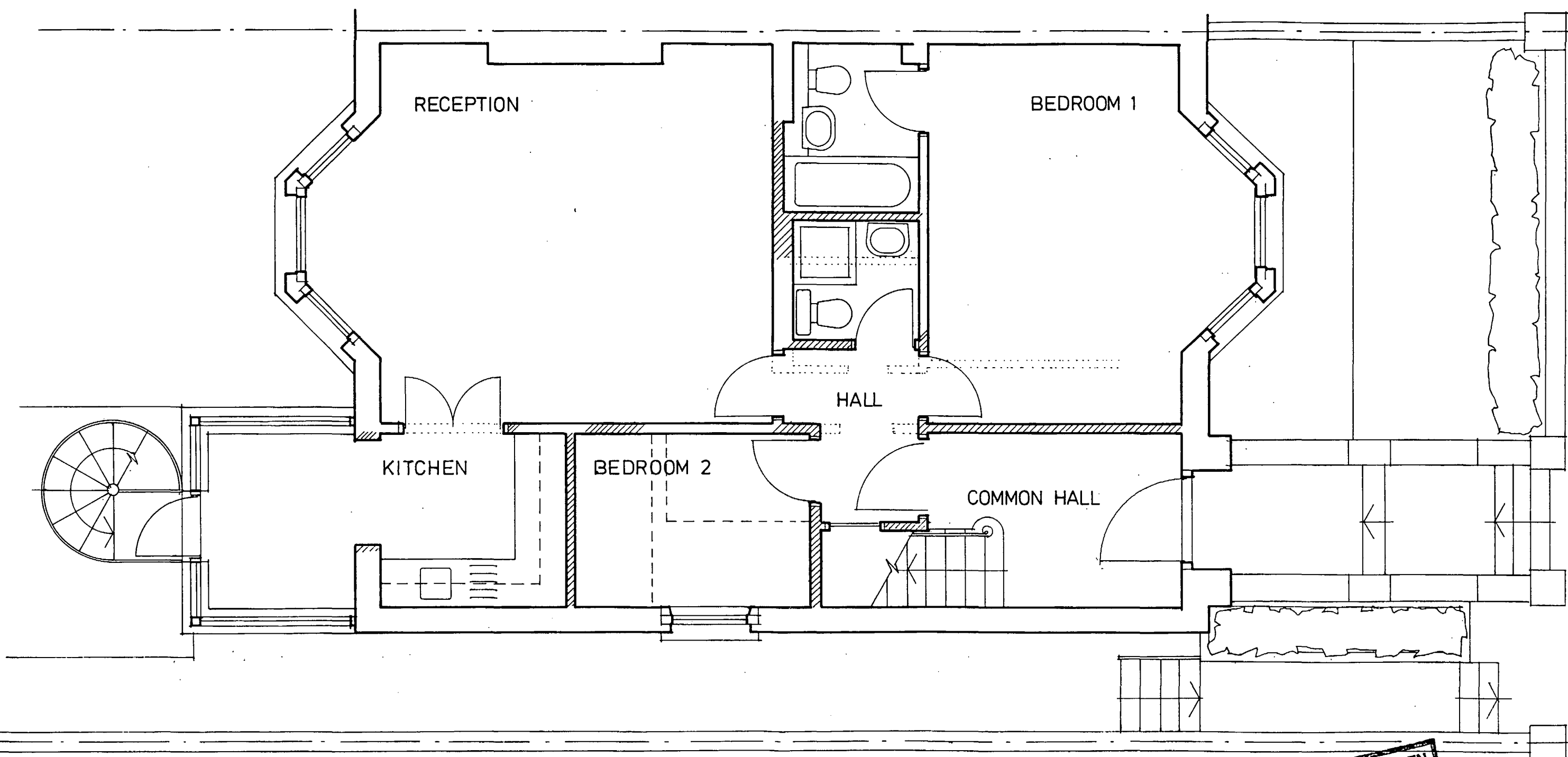
drawing LOWER GROUND FLOOR
PLAN - AS PROPOSED

scale 1:50 date JAN 89 drw by RF

drawing number 1749-09 revision

LONDON BOROUGH OF CAMDEN
PLANNING AND TRANSPORT
DEPARTMENT
27 JAN 1989
RECEIVED

LONDON BOROUGH OF CAMDEN
TOWN AND COUNTRY PLANNING ACTS
25 APR 1990
PLANS APPROVED
ON BEHALF OF THE COUNCIL



Awford-Haye Partnership

1 Perren Street, London NW5 3ED 01-267-7564

project

7 TANZA ROAD, NW3

drawing UPPER GROUND FLOOR
PLAN - AS PROPOSED

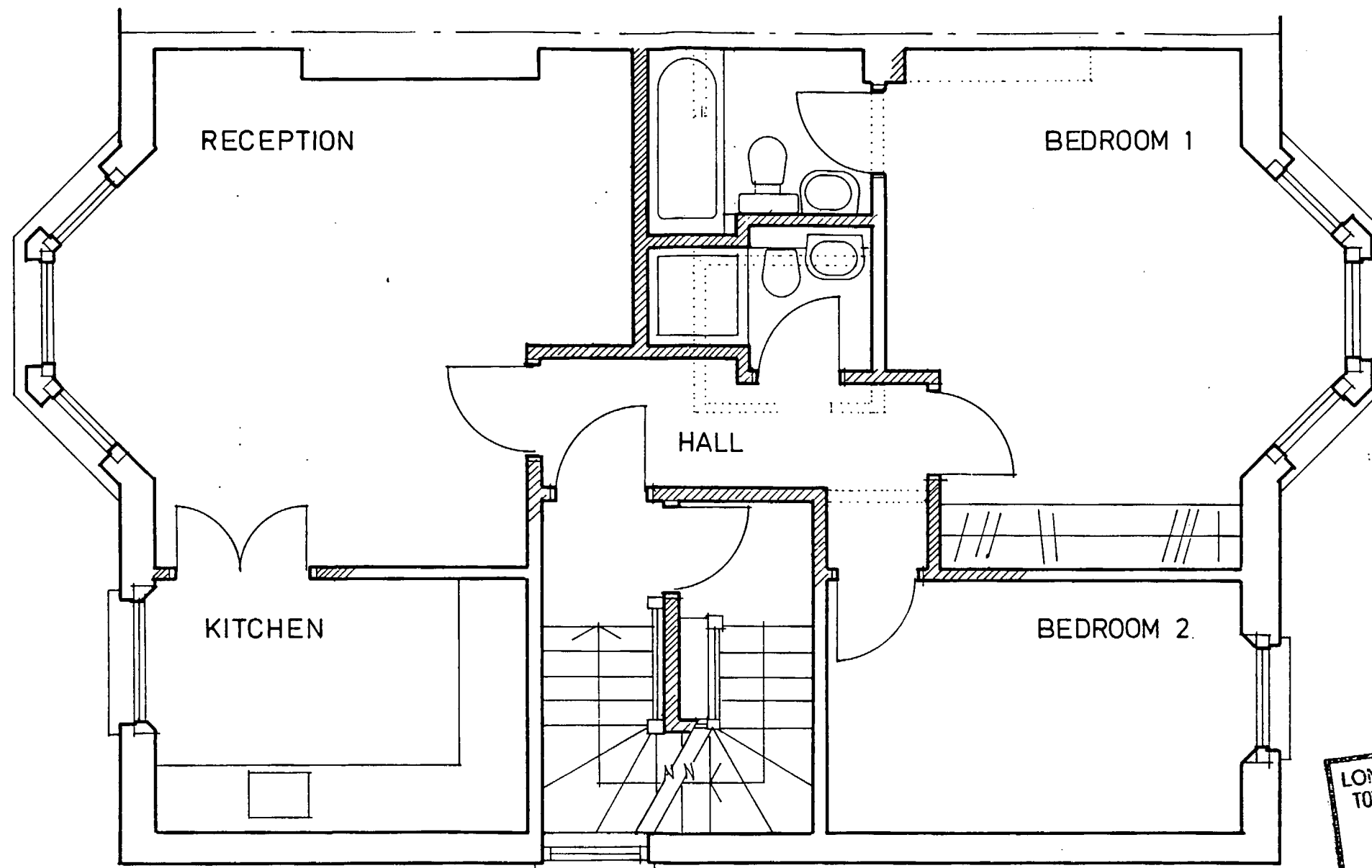
scale 1:50 | date JAN 89 | drw by RF

drawing number 1749-10 | revision

LONDON BOROUGH OF CAMDEN
PLANNING AND TRANSPORT
DEPARTMENT
27 JAN 1989
RECEIVED

LONDON BOROUGH OF CAMDEN
TOWN AND COUNTRY PLANNING ACTS
25 APR 1990
APPROVED
ON BEHALF OF THE COUNCIL

TP 8905071



LONDON BOROUGH OF CAMDEN
TOWN AND COUNTRY PLANNING ACTS
25 APR 1990
PLANS APPROVED
ON BEHALF OF THE COUNCIL

LONDON BOROUGH OF CAMDEN
PLANNING AND TRANSPORT
DEPARTMENT
27 JAN 1989
RECEIVED

Awford - Haye Partnership

1 Perren Street, London NW5 3ED 01-267-7564

project

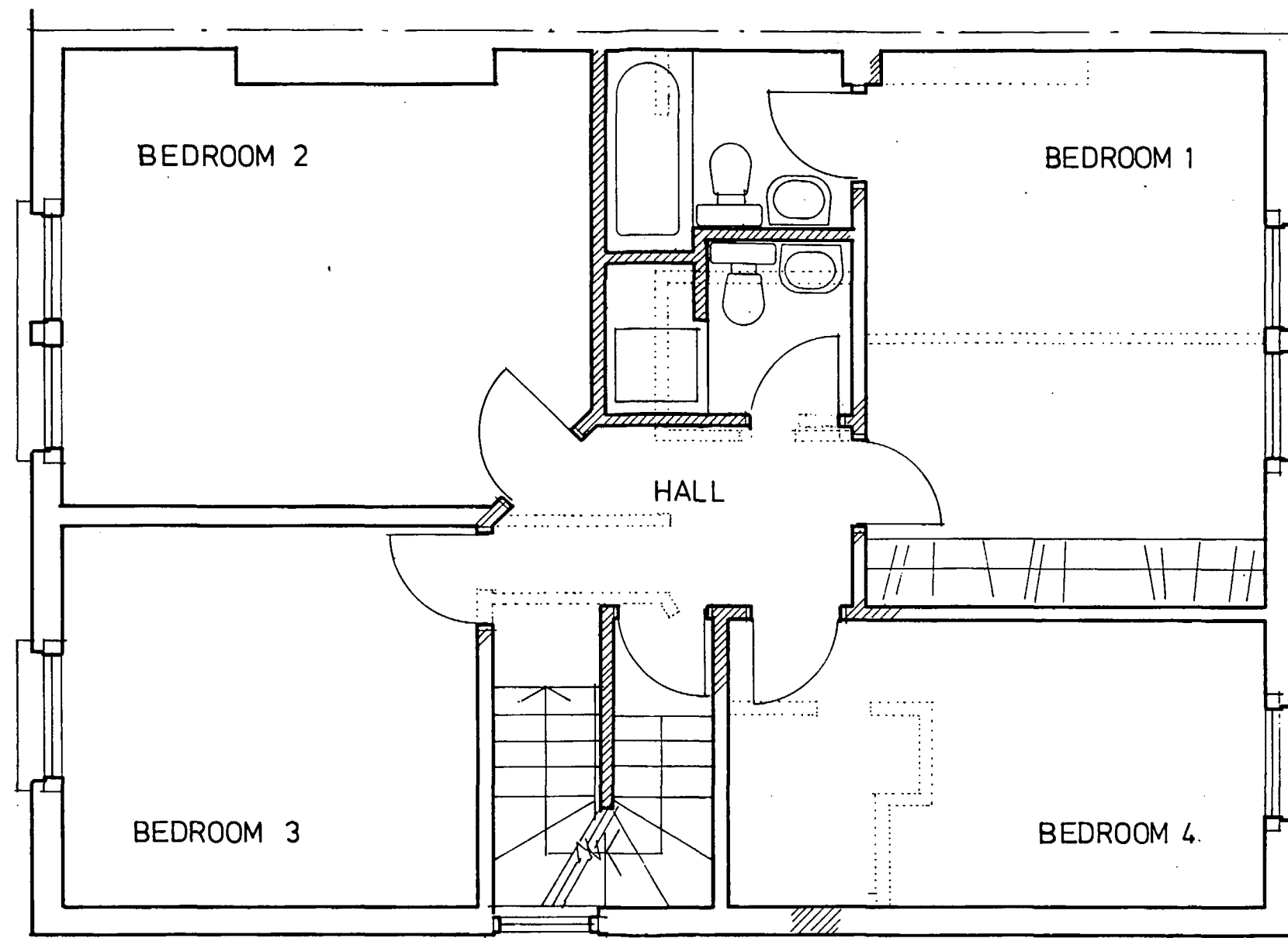
7 TANZA ROAD, NW3

drawing FIRST FLOOR PLAN
AS PROPOSED

scale 1:50 date JAN 89 drw by RF

drawing number 1749-11 revision

TP 8905071



LONDON BOROUGH OF CAMDEN
TOWN AND COUNTRY PLANNING ACTS
25 APR 1990
PLANS APPROVED
ON BEHALF OF THE COUNCIL

LONDON BOROUGH OF CAMDEN
PLANNING AND TRANSPORT
DEPARTMENT
27 JAN 1989
RECEIVED

Awford-Haye Partnership

1 Perren Street, London NW5 3ED 01-267-7564

project

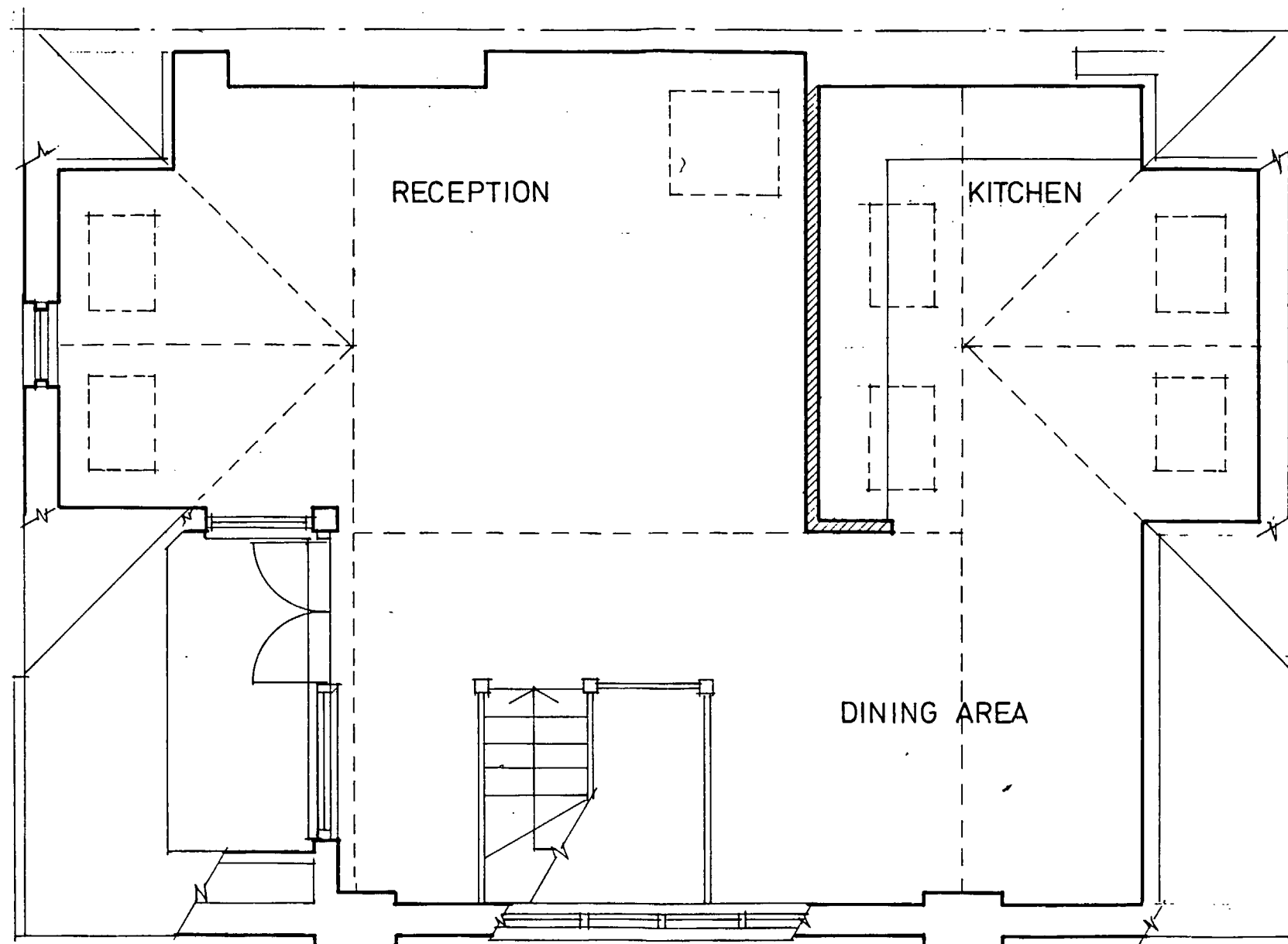
7 TANZA ROAD, NW3

drawing SECOND FLOOR PLAN
AS PROPOSED

scale 1:50 date JAN 89 drw by RF

drawing number 1749-12 revision

TP 8905071



LONDON BOROUGH OF CAMDEN
PLANNING AND TRANSPORT
DEPARTMENT
27 JAN 1989
RECEIVED

LONDON BOROUGH OF CAMDEN
TOWN AND COUNTRY PLANNING ACTS
25 APR 1990
PLANS APPROVED
ON BEHALF OF THE COUNCIL

Awford - Haye Partnership

1 Perren Street, London NW5 3ED 01-267-7564

project

7 TANZA ROAD, NW3

drawing THIRD FLOOR PLAN
AS PROPOSED

scale 1:50

date JAN 89

drw by RF

drawing number

1749 - 13

revision



FRONT ELEVATION



REAR ELEVATION

LONDON BOROUGH OF CAMDEN
PLANNING AND TRANSPORT
DEPARTMENT
27 JAN 1989
RECEIVED

LONDON BOROUGH OF CAMDEN
TOWN AND COUNTRY PLANNING ACTS
25 APR 1990
PLANS APPROVED
ON BEHALF OF THE COUNCIL

Awford-Haye Partnership

1 Perren Street, London NW5 3ED 01-267-7564

project

7 TANZA ROAD, NW3

drawing FRONT & REAR ELEVATIONS
AS PROPOSED

scale 1:100 date JAN 89 drw by RF

drawing number 1749-14 revision

708905077

RI



LONDON BOROUGH OF CAMDEN
TOWN AND COUNTRY PLANNING ACTS

25 APR 1990

PLANS APPROVED
ON BEHALF OF THE COUNCIL

LONDON BOROUGH OF CAMDEN
PLANNING AND TRANSPORT
DEPARTMENT
12 FEB 1990
RECEIVED

Awford - Haye Partnership

1 Perren Street, London NW5 3ED 01-267-7564

project

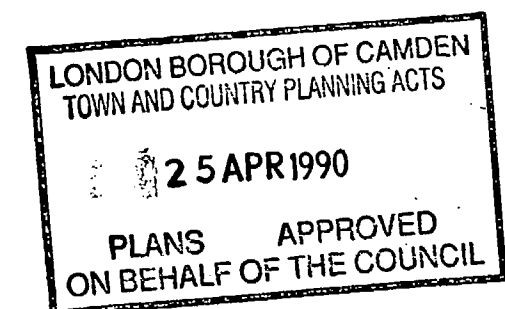
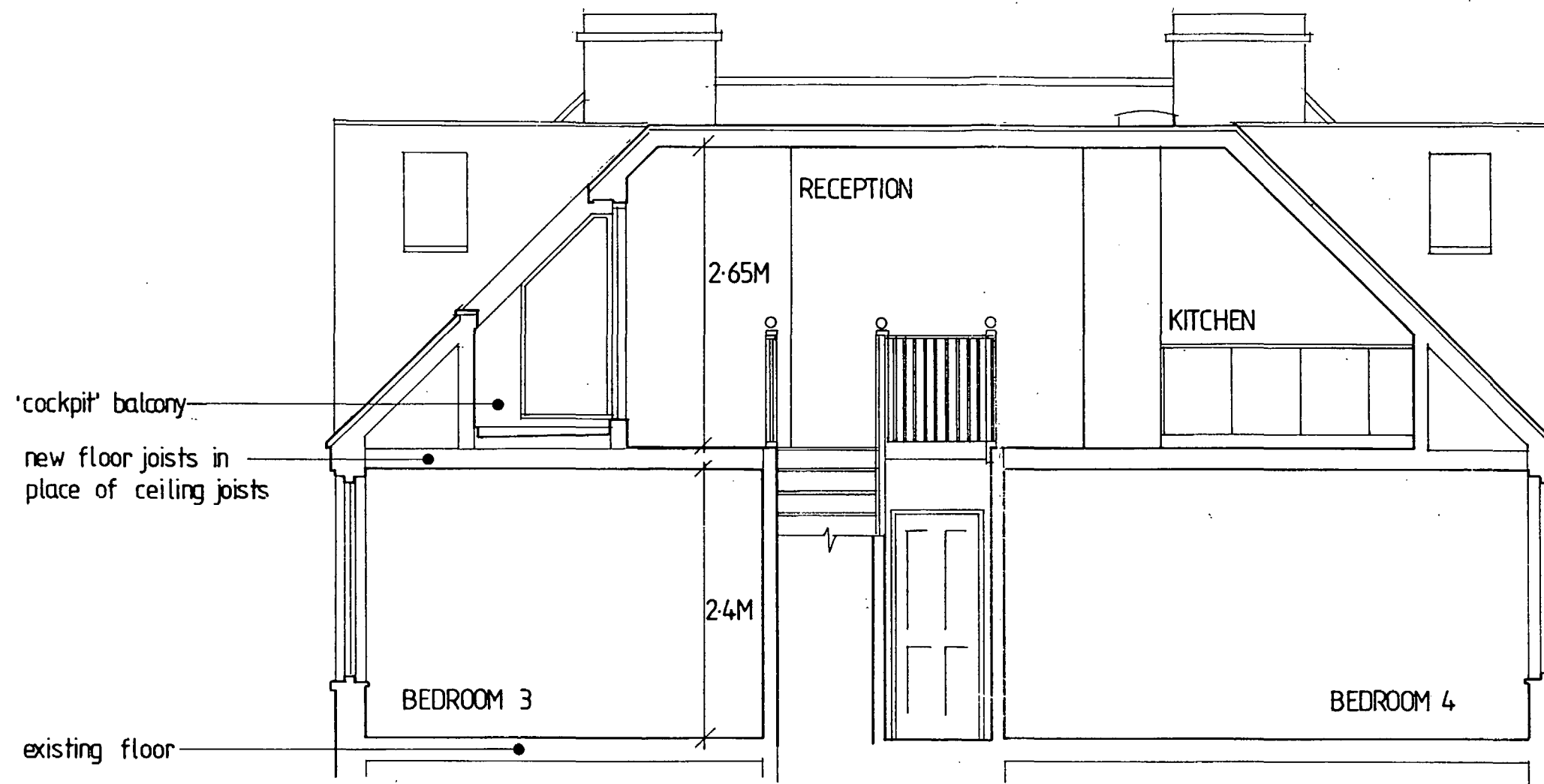
7 TANZA ROAD, NW3

drawing SIDE ELEVATION
AS PROPOSED

scale 1:100	date JAN 89	drw by RF
drawing number	revision	
1749 - 15	A	

Rev. A - Feb 90 3RD FLOOR WINDOW REVERSED. NOTES ADDED.

TP89050/1RI



TP8905071R1

Ian Hays Partnership

1 Perren Street, London NW5 3ED 01-485 1067

project

7 TANZA ROAD, LONDON, NW3

drawing

PROPOSED SECTION THRO. 2ND & 3RD FLOORS

scale 1:50 date FEB 90 drw by RF

drawing number revision

1749_16