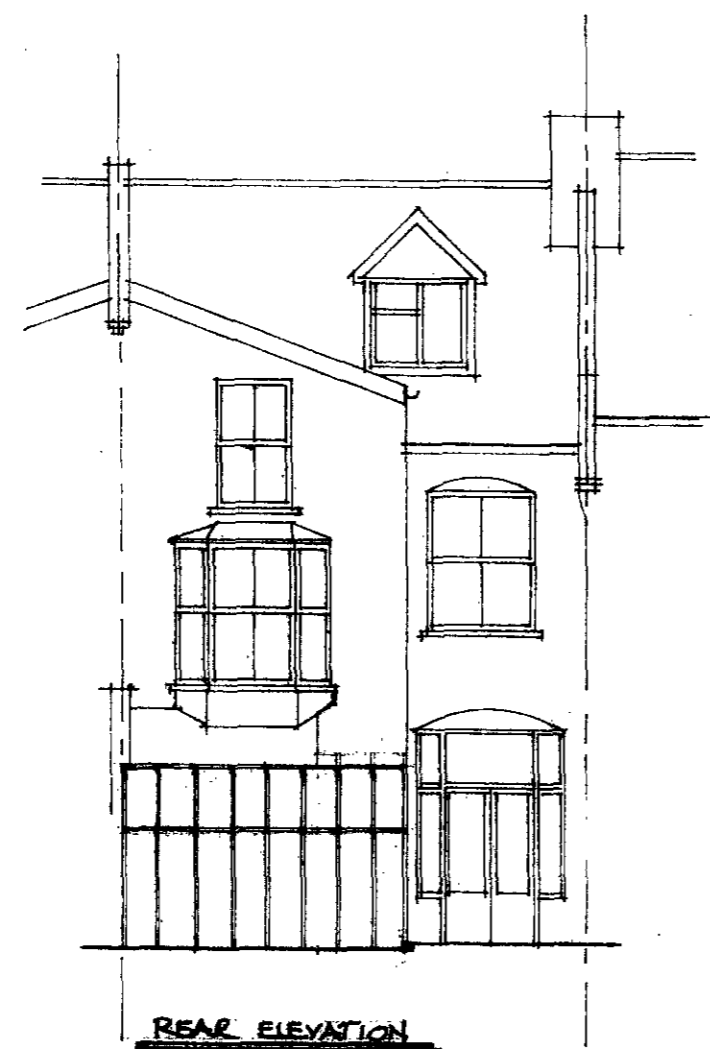
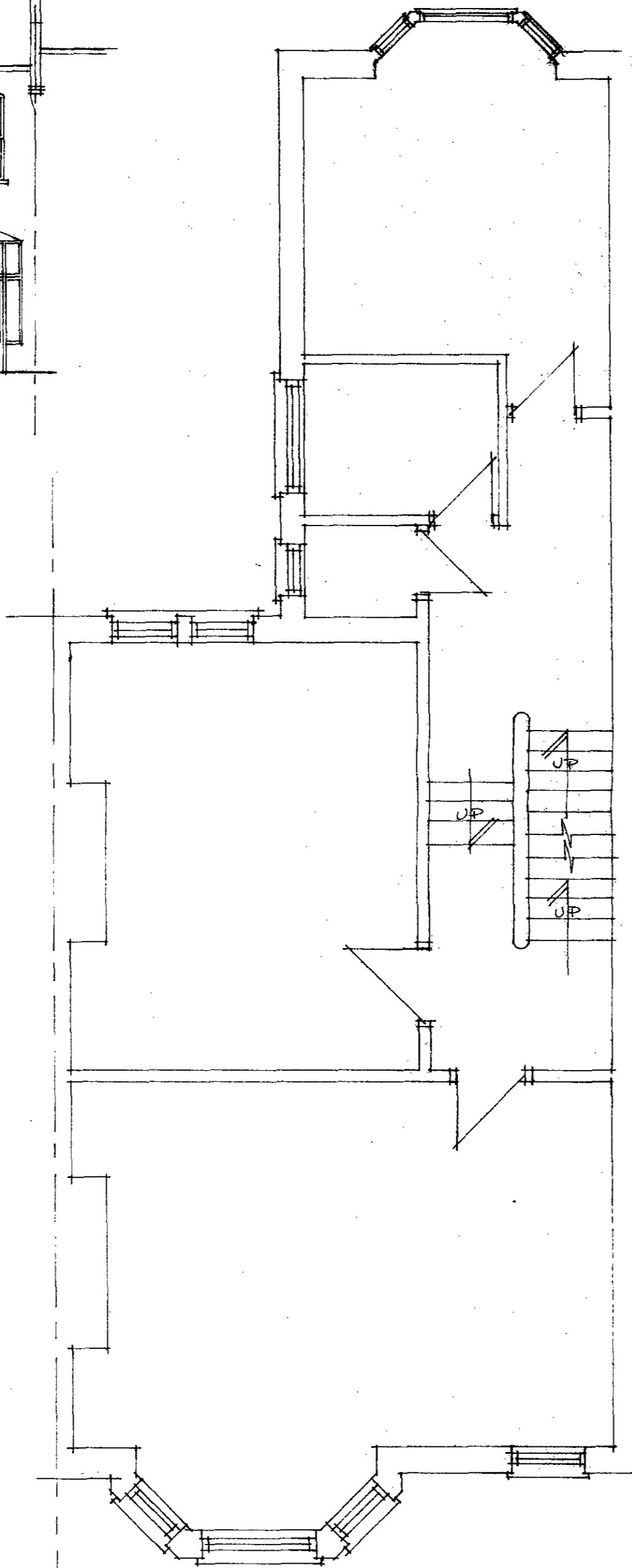


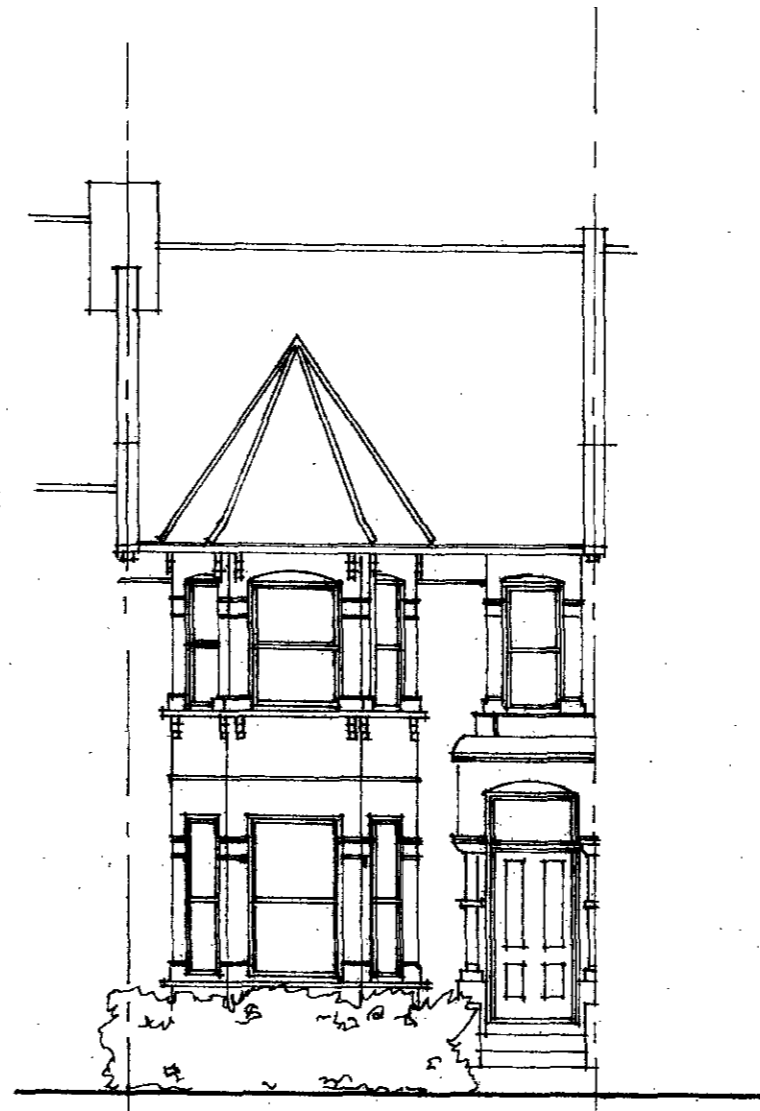
GROUND FLOOR PLAN



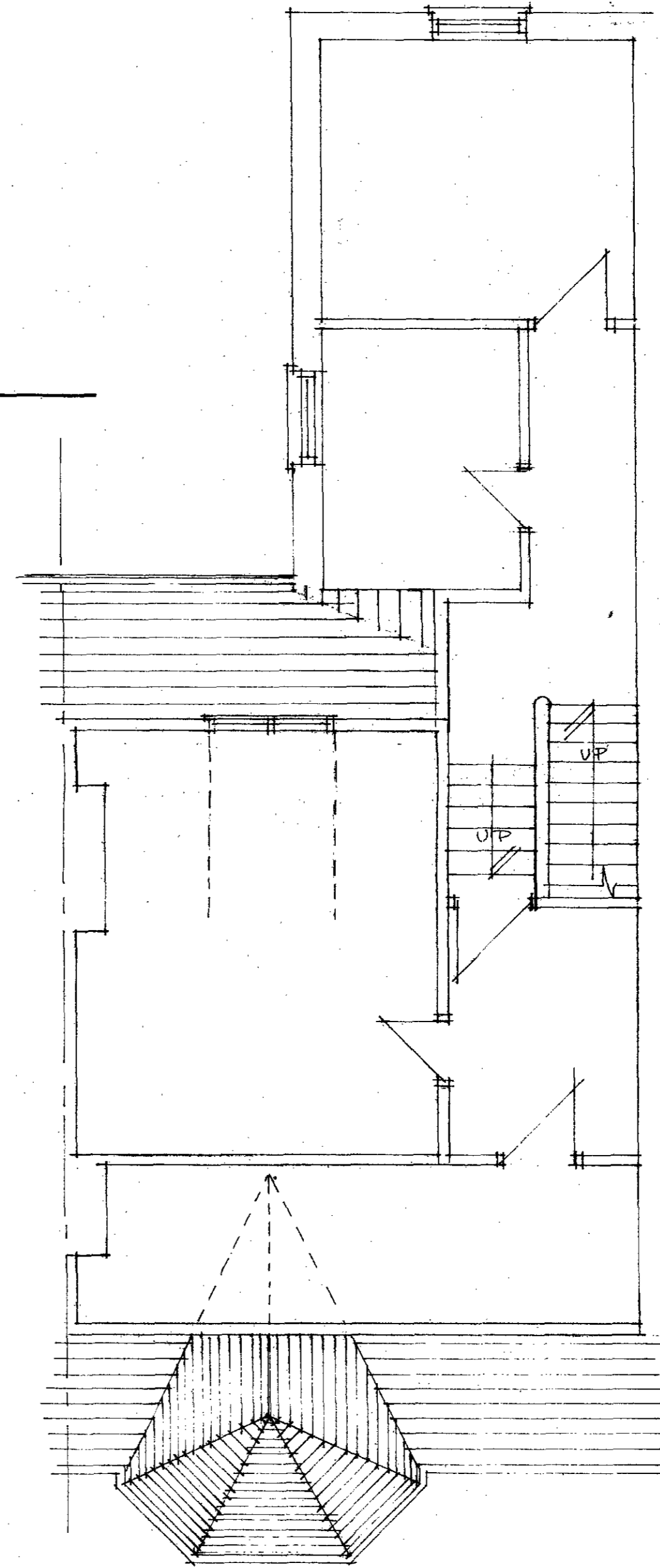
REAR ELEVATION



FIRST FLOOR PLAN



FRONT ELEVATION



SECOND FLOOR PLAN

LONDON BOROUGH OF CAMDEN  
TOWN AND COUNTRY PLANNING ACTS  
25 MAY 1989  
APPROVED  
PLANS NOTIFIED  
ON BEHALF OF THE COUNCIL

RECEIVED  
1 DEC 1988  
LONDON BOROUGH OF CAMDEN  
PLANNING AND TRANSPORT  
DEPARTMENT

1P8804666

LONDON BOROUGH OF CAMDEN  
PLANNING DEPARTMENT  
RECEIVED

BY	DESCRIPTION	DATE
EDWARD J. McGUIRE	SURVEYORS	
The Studio, St. Nicholas Close, Epsom, Surrey, Tel 01 207 5150		
FLOOR PLANS AS EXISTING		
15 HILFELD ROAD, LONDON NW6		
WIBROCK PROPERTIES LIMITED		
1:50	1:100	N/A
DATE	NOVEMBER 88	
081121		