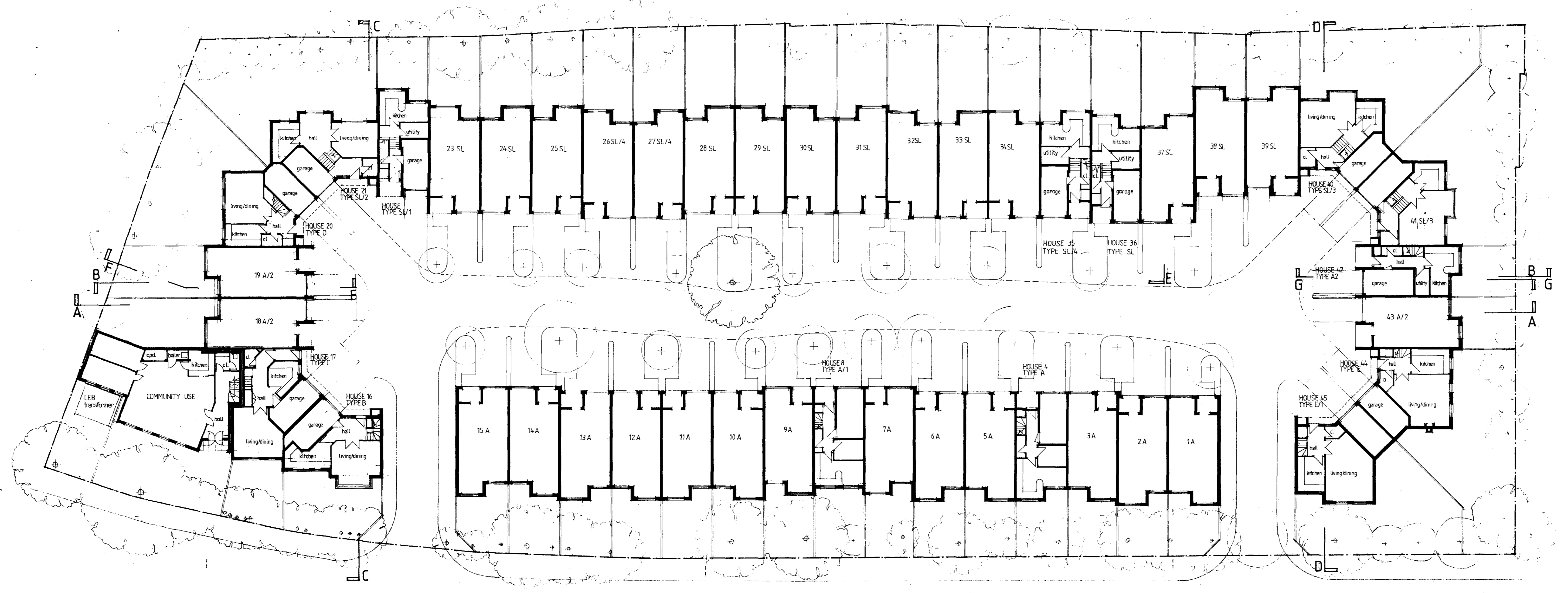


First Floor Plan



Ground Floor Plan

REVISIONS

A
B
MAY 89: HOUSE NOS 23-27 REVISED TO
EXTEND REAR GARDENS.

NOTES

1 Do not scale from this drawing -
use figured dimensions only.

KEY

- + EXISTING TREES TO BE REMOVED
- + PROPOSED TREE PLANTING
- + EXISTING TREE PLANTING

For Further Information refer to Landscape Architects
1100 Landscape Setting-Out Drawing.

Berridge House Site
Hillfield Road
London NW6

Ground & First Floor Plans

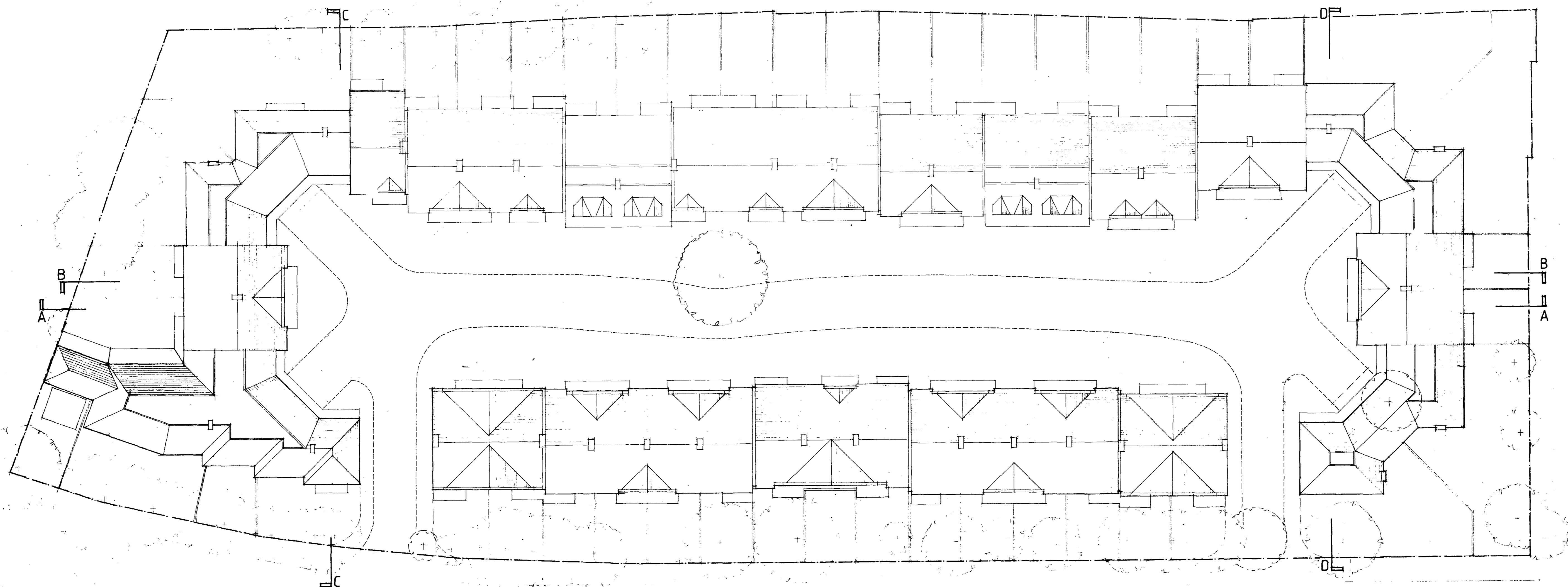
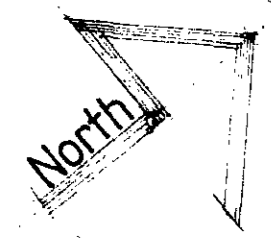
DAVID LANDAW AND PARTNERS
Chartered Architects and Planning Consultants
Greencoat House, Francis Street
London, SW1P 1DH
Telephone 01 830 0333 Telefax 01 821 5255

LONDON BOROUGH OF CAMDEN
PLANNING AND TRANSPORT
DEPARTMENT
2 MAY 1989
RECEIVED

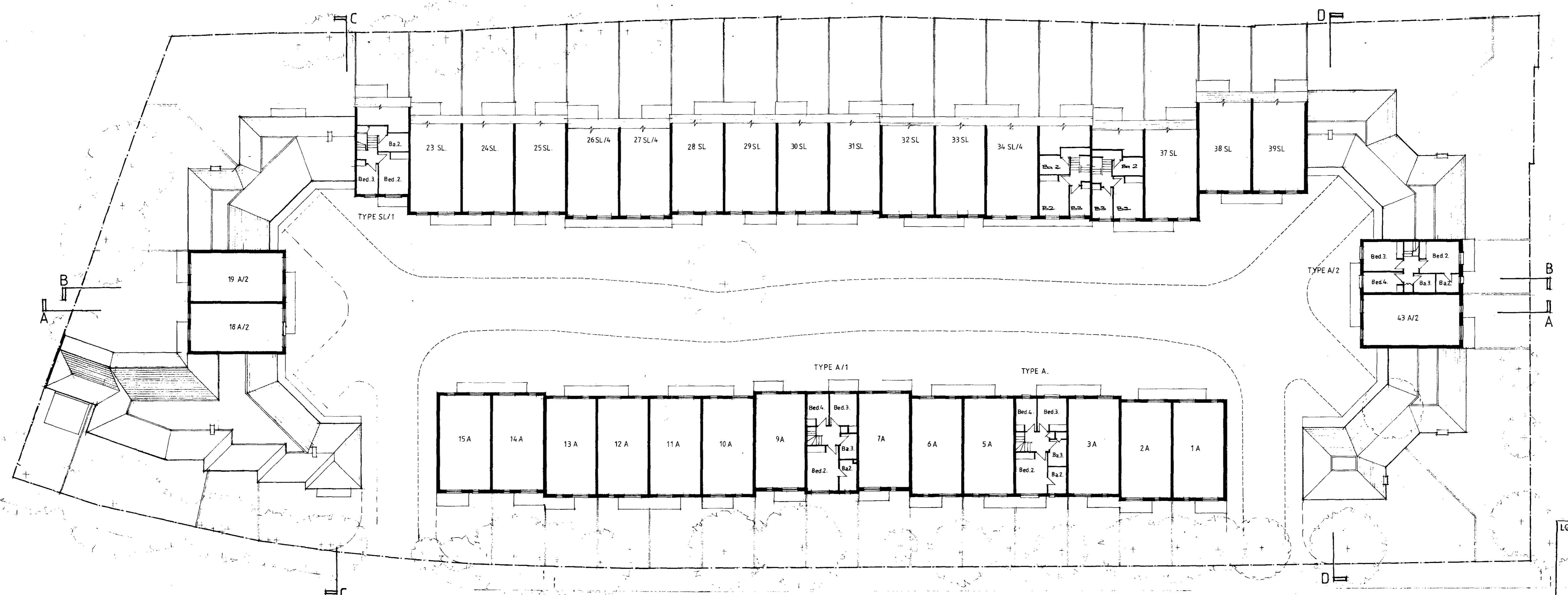
drawn by	checked	scale	date
SLP	MDK	1:200	MAR '89

398-41 C
drawing no. revision

TP 880451 & 88



Roof Plan



Second Floor Plan

REVISIONS

NO. 1 HOUSE NOS 23-27 REVISED TO EXTEND REAR GARDENS

NOTES

1 Do not scale from this drawing - use figured dimensions only.

EXISTING TREES TO BE REMOVED SHOWN DOTTED

EXISTING TREES TO BE RETAINED SHOWN THUS

Berridge House Site
Hillfield Road
London NW6

Roof and Second
Floor Plans

DAVID LANDAW AND PARTNERS
Chartered Architects and Planning Consultants
Greencourt House - Francis Street
London - SW1P 1DH
Telephone 01 630 0333 Telefax 01 821 6265

TP 800 4518 BS

LONDON BOROUGH OF CAMDEN
PLANNING AND TRANSPORT
DEPARTMENT
2 MAY 1989
RECEIVED

drawn by	checked	scale	date
TW		1:200	MARCH 1989

398-42	B
drawing no.	revision



North Western Elevation



Sectional Elevation A-A to Mews

REVISIONS

APR 1989. ELEVATIONS GENERALLY UPDATED.
HOUSE NOS 20-27 REVISED TO
EXTEND REAR GARDENS.

NOTES

- 1 Do not scale from this drawing - use figured dimensions only.

Berridge House Site
Hillfield Road
London NW6

Elevations Sheet 2

TP 000451885

DAVID LANDAW AND PARTNERS
Chartered Architects and Planning Consultants
Greencoat House Francis Street
London SW1P 1DH.
Telephone 01 630 0333 Telefax 01 821 5255

drawn by	checked	scale	date
		1:200	2 MAY 1989

LONDON BOROUGH OF CAMDEN
PLANNING AND TRANSPORT
DEPARTMENT
2 MAY 1989
RECEIVED

398-44 B

© drawing No. revision