

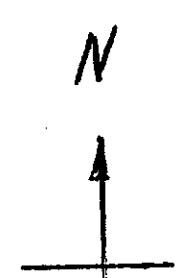
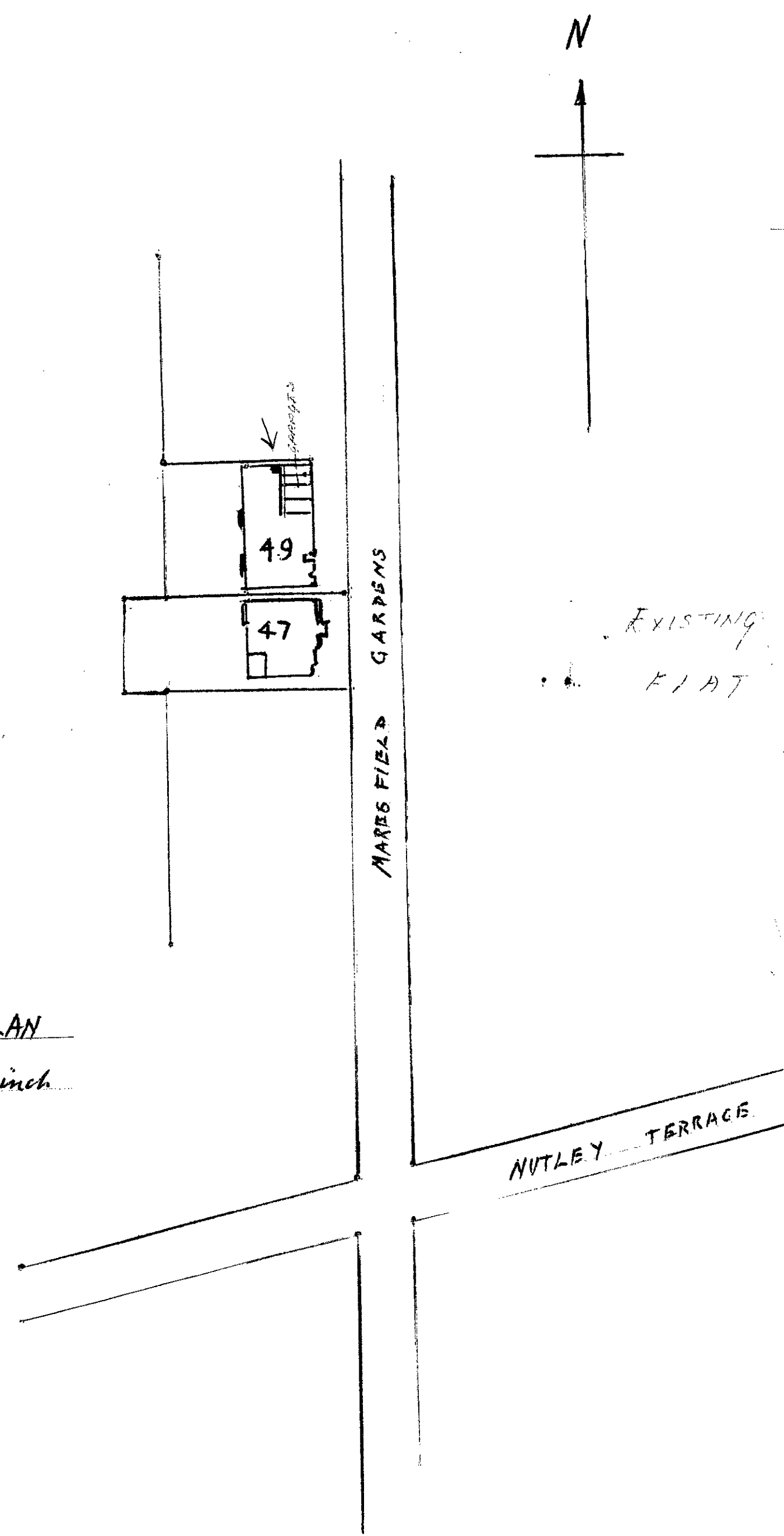
S. SIDNEY (BUILDER)

24 WRENTHAM AVE N.W. 10

49 MAREFIELD GARDENS N.W. 3.

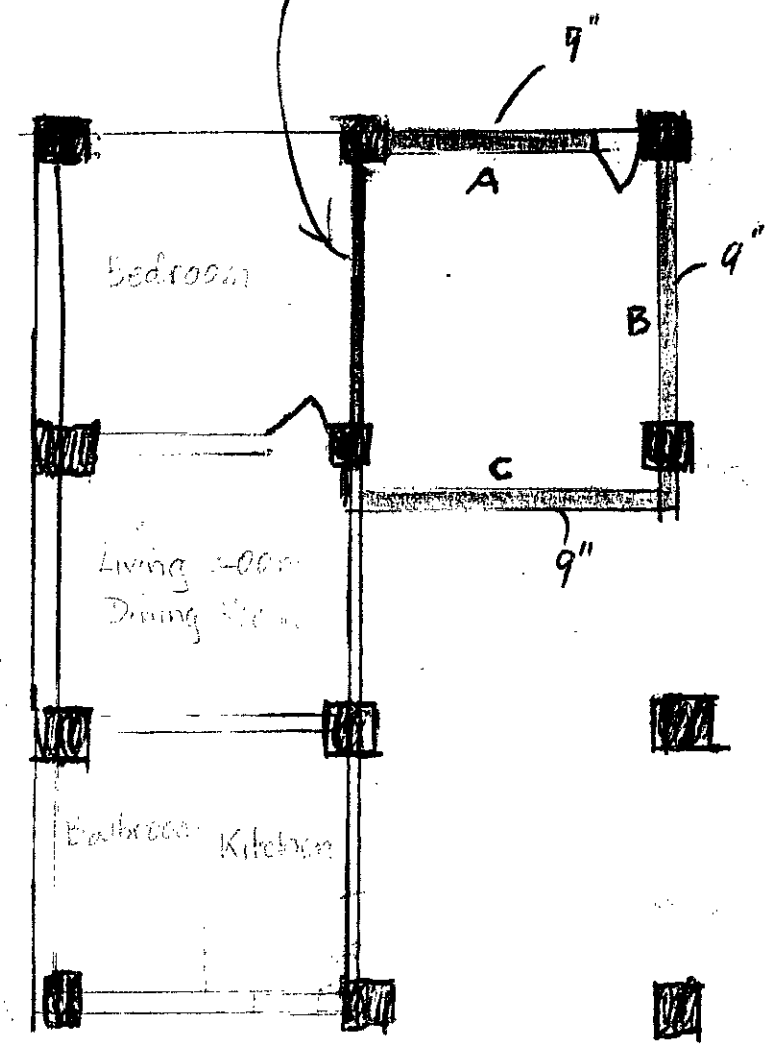
PROPOSED ALTERATIONS ON LOWER GROUND FLOOR.

BLOCK PLAN
88 # 1/4 inch



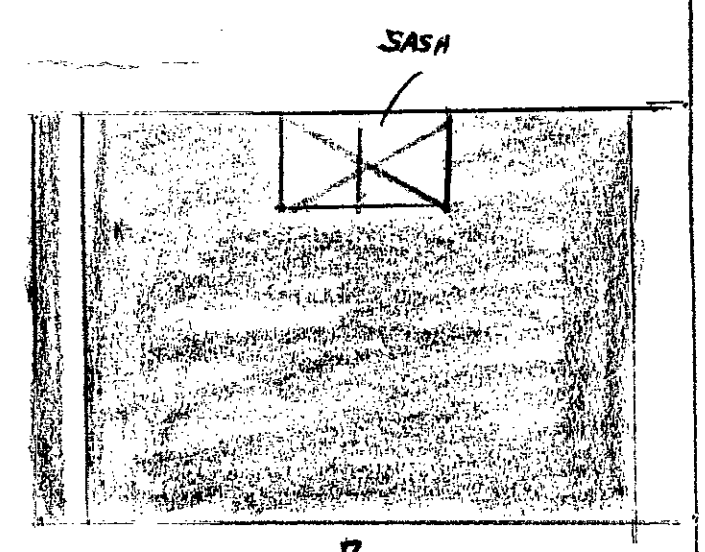
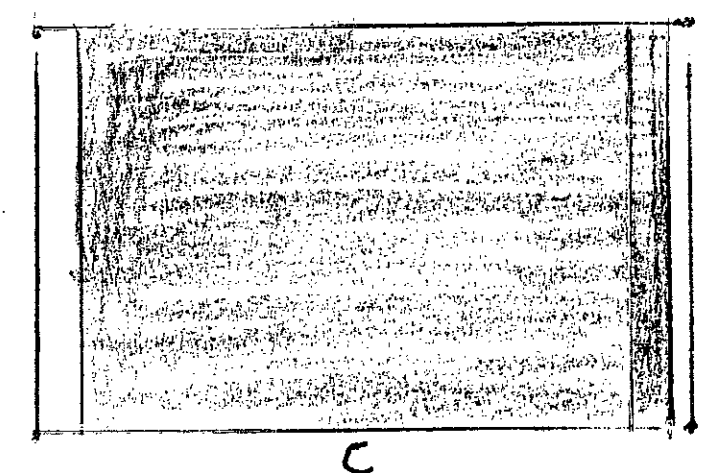
4 1/2 BRICKWORK CARRYING NO WEIGHT
TO BE PULLED DOWN

EXISTING
FLAT

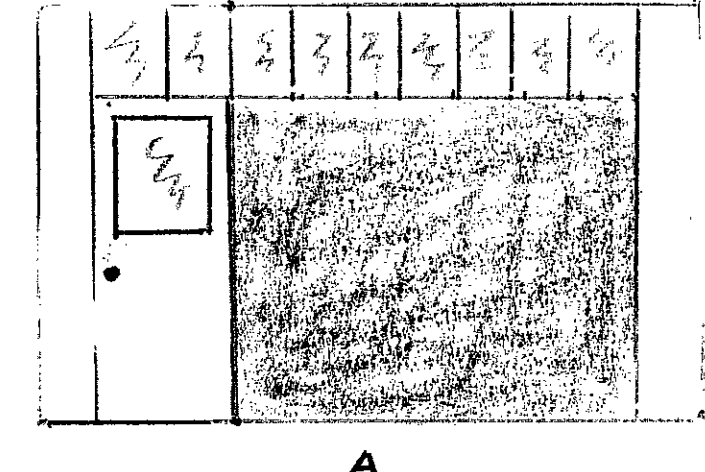


SCALE 1/8" = 1 FT.

PRESENTED TO
CITY OF LONDON
25 JAN 1955



11'-0"



SCALE 1/4" = 1 FT.

8'-9"

23126