

COPYRIGHT not to be reproduced without permission.



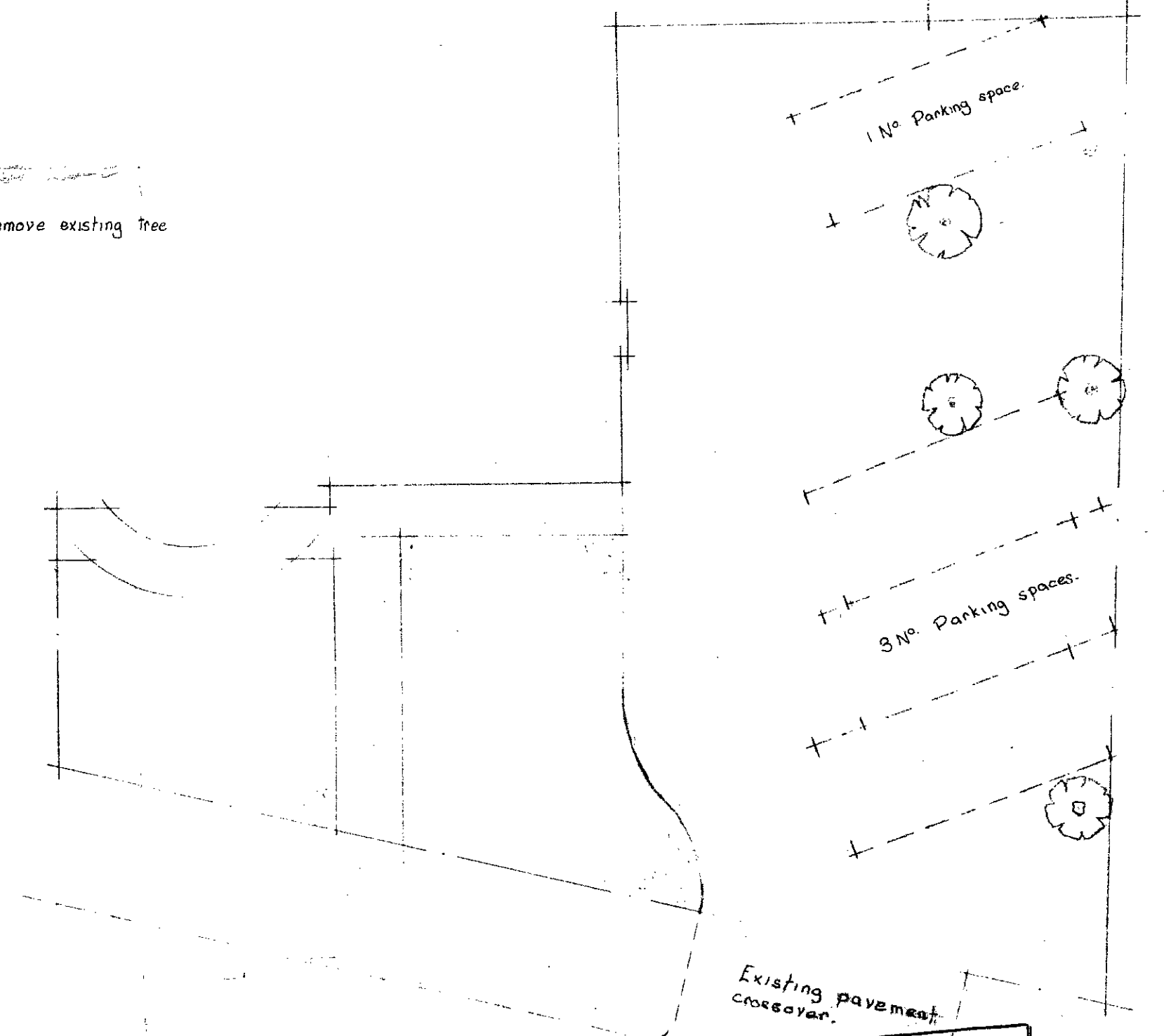
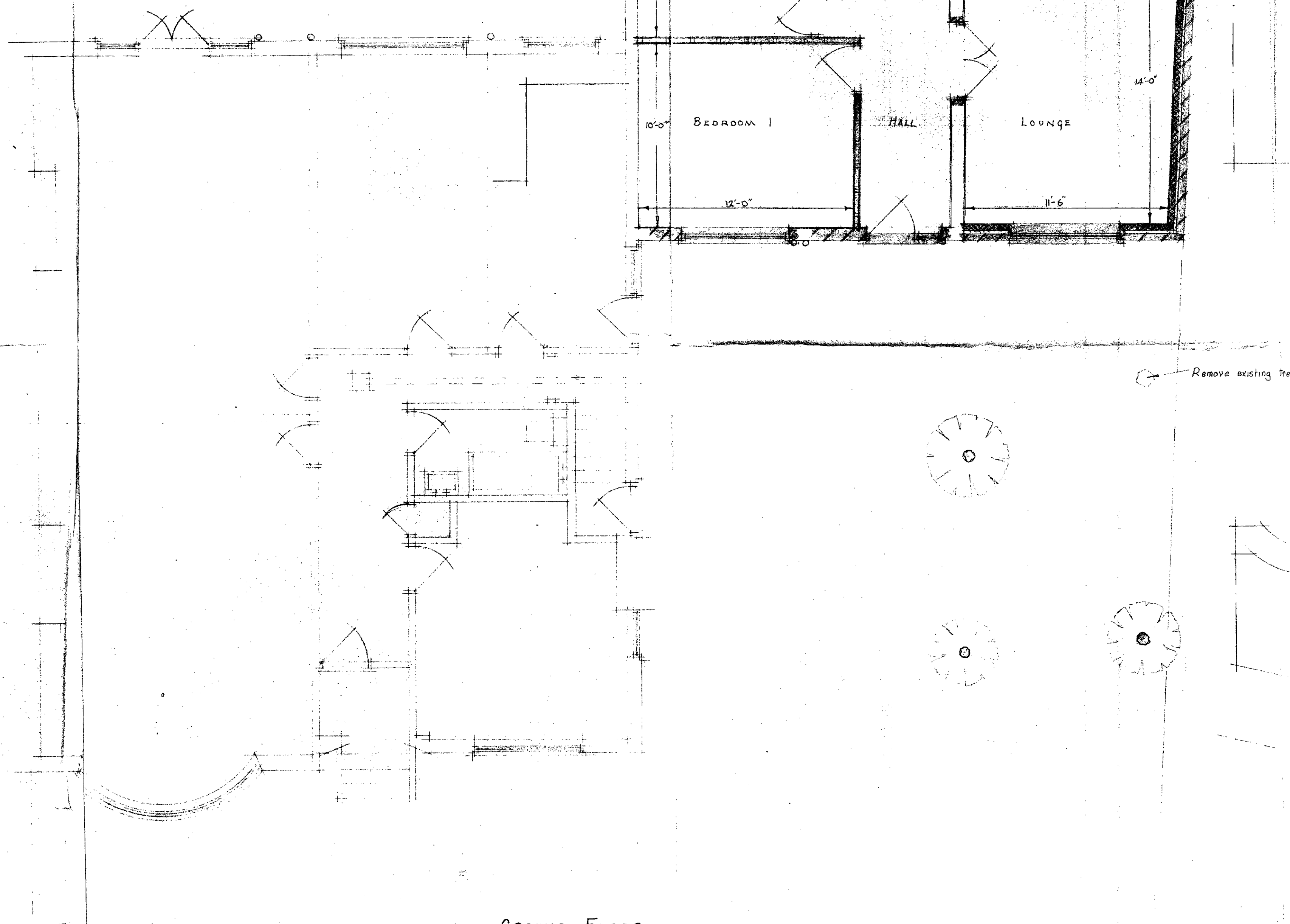
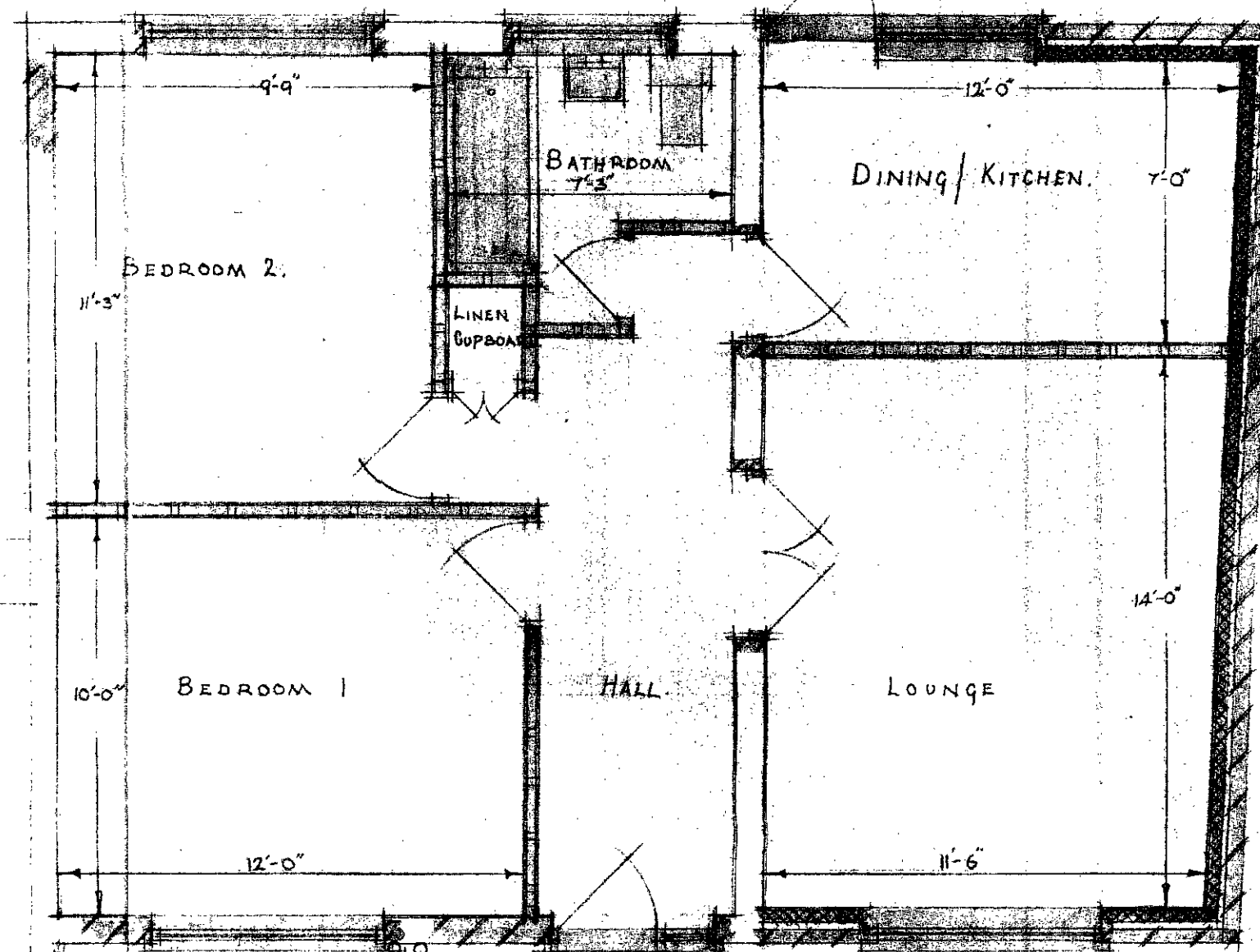
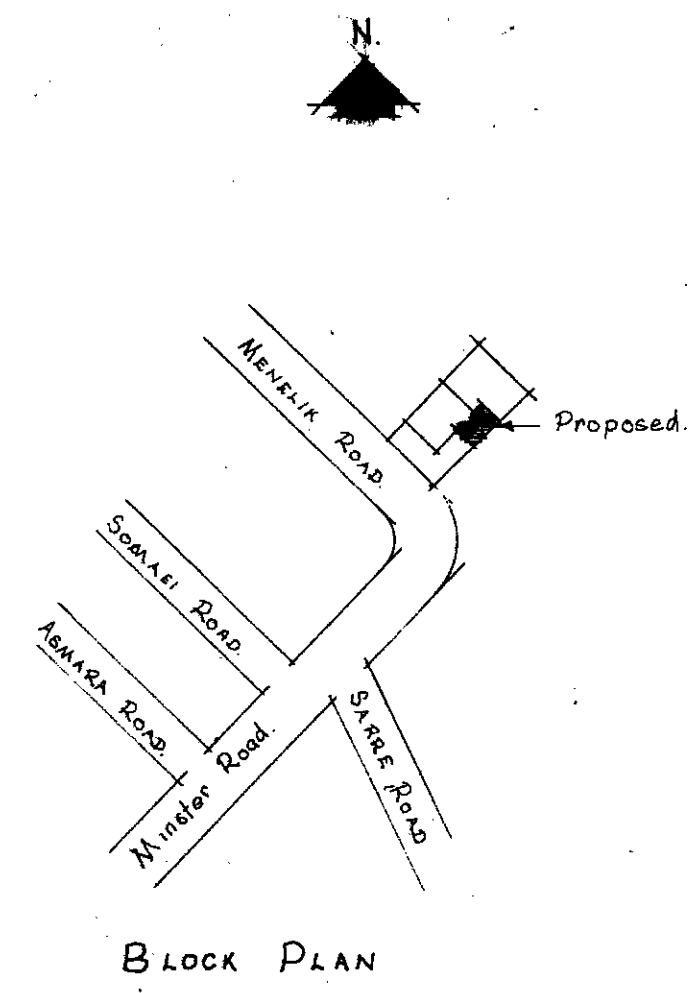
FRONT ELEVATION.

CTP/B/4/A/16260

**SIDNEY L. STERN & PARTNERS**  
F.F.S., M.R.S.H. M.S.A.A.T.  
Incorporated Surveyors  
65 Maygrove Road, NW6 2EG. 01-624-9006

PROPOSED EXTENSION AT 64 MENELIK ROAD, N.W.2.

Drawn by J.C.	DRAWING NO
Date APRIL 1978.	814/4
Scale 1/4" REP 1'-0"	



LONDON BOROUGH OF CAMDEN  
 PLANS APPROVED  
 28 AUG 1973  
 ON BEHALF OF THE COUNCIL

GTP/F3/4/A/16280

CASE COPY

SIDNEY L. STERN & PARTNERS  
 F.S., M.R.S.H.M.S.A.A.T.  
 Incorporated Surveyors  
 65 Maygrove Road, NW6 2EG. 01-64-9006

PROPOSED ALTERATIONS AT 64 MENELIK ROAD N.W.2.

Drawn by J.C.	DRAWING NO	
Date March 1973	814/3	A
Scale 1/8" Rep 1'-0"		